

Cello Concerto

by Herman Vogt

Commissioned by Audun Sandvik

With support from *Komponistenes Vederlagsfond* and *Norsk Kulturfond*





Cello Concerto

by Herman Vogt

Contents

1. <i>Fantasia</i> , Lento - Allegro moderato e risoluto;	page 5
2. <i>Canzona</i> , Largo e tranquillo;	page 34
3. <i>Sonata</i> , Allegro - Tranquillo - Allegro agitato e energico;	page 50

Ensemble

2 Flutes (Flute two doubling Piccolo)
2 Oboes
2 Clarinets in Bb
2 Bassoons (Bassoon two doubling Contrabassoon)
4 Horns in F
2 Trumpets in C
2 Trombones
1 Bass Trombone
1 Tuba
Timpani
3 Percussionists
Harp (tune low D to D#)
Celesta and Piano (one player)
Solo Cello
1st Violin
2nd Violin
Viola
Cello
Double Bass (at least two with 5 strings are needed, lowest string tuned to C)

Percussion 1

Vibraphone (without motor), Xylophone, Medium suspended cymbal, Medium size metal bar (dry sound), Small triangle (clear and high pitched)

Percussion 2

Glockenspiel, 3 suspended cymbals (small, medium, big), Small triangle (clear and high pitched), Snare drum (with snares), 1 small wood block (high pitched), Bass drum, Large Tam-tam (may be shared with Perc. 3)

Percussion 3

Bass drum, Medium suspended cymbal, Large Tam-tam (may be shared with Perc. 2), 6 tom-toms

Notes

All arpeggios and grace notes should be performed before the beat.

Percussion (except Timpani) and Celesta/Piano TACET 2nd movement.

Duration: approximately 36' (1st movement 13'30", 2nd movement 9', 3rd movement 13'30")

Score in C

(Piccolo sounds one octave up, Contrabassoon sounds one octave down, Glockenspiel sounds two octaves up, Xylophone sounds one octave up, Celesta sounds one octave up, Double Bass sounds one octave down)



B

Cello Concerto

27 $\frac{3}{4}$

$\frac{4}{4}$

$\frac{3}{4}$

Fl. 1
Fl. 2
Ob. 1
Ob. 2
B. Cl. 1
B. Cl. 2
Bsn. 1
Bsn. 2
Hr. 1
Hr. 2
Hr. 3
Hr. 4
C. Tpt. 1
C. Tpt. 2
Tbn. 1
Tbn. 2
B. Tbn.
Tuba

$\frac{3}{4}$

B $\frac{4}{4}$

$\frac{3}{4}$

Timp.
Perc. 1
Perc. 2
Perc. 3
Hp.
Cel.

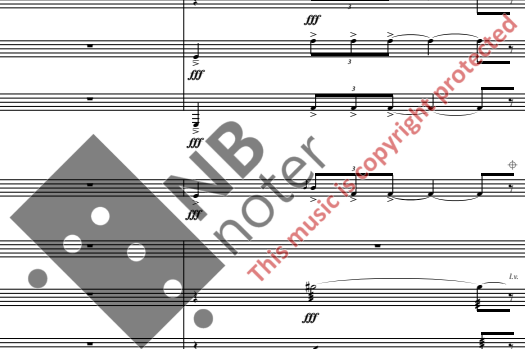
B

$\frac{3}{4}$

$\frac{4}{4}$

$\frac{3}{4}$

Vlc.
Vln. I
Vln. II
Vla.
Vcl.
Cb.



Cello Concerto

poco rit.-----

C

33 $\frac{3}{4}$

$\frac{4}{4}$

Musical score for Flutes (Fl. 1, Fl. 2), Oboes (Ob. 1, Ob. 2), Clarinets (B.Cl. 1, B.Cl. 2), Bassoons (Bsa. 1, Bsa. 2), Horns (Ha. 1, Ha. 2, Ha. 3, Ha. 4), Trumpets (C.Tpt. 1, C.Tpt. 2), and Trombones (Tbn. 1, Tbn. 2, B.Tbn., Tuba). The score includes dynamic markings such as *p*, *mf*, *ff*, *mf subito*, and *pp*. A large watermark 'NBmeter' is overlaid on the score.

poco rit.-----

C

$\frac{3}{4}$

$\frac{4}{4}$

Musical score for Percussion (Perc. 1, Perc. 2, Perc. 3) and Harp (Hp.). Percussion parts include 'Medium susp. cymb.' and 'Maracas'. Harp part includes 'sempre Lc.' and 'mp'. Dynamic markings include *p*, *mf*, *ff*, and *mp*. A large watermark 'NBmeter' is overlaid on the score.

poco rit.-----

C

$\frac{3}{4}$

$\frac{4}{4}$

Musical score for Violins (Vln. I, Vln. II), Viola (Vla.), Violoncello (Vlc.), and Contrabass (Cb.). Violin parts include 'sul D.A.' and 'sul G.D.'. Viola part includes 'divisi'. Dynamic markings include *f*, *mp*, *f*, *p*, *mf*, and *pp*. A large watermark 'NBmeter' is overlaid on the score.

Cello Concerto

E

61

$\frac{3}{4}$ poco accel. ----- $\frac{4}{4}$ poco rit. = 58

poco accel. ----- = 68

Musical score for strings and woodwinds. The score includes parts for Flute 1 & 2, Oboe 1 & 2, Bassoon 1 & 2, Horn 1-4, Trumpet 1 & 2, Trombone 1 & 2, and Tuba. The woodwinds and strings play melodic lines with dynamic markings of *mf*, *mp*, and *p*. The bassoon part includes a note: "change to Contrabassoon".

E

$\frac{3}{4}$ poco accel. ----- $\frac{4}{4}$ poco rit. = 58

poco accel. ----- = 68

Musical score for percussion and piano. The percussion section includes Timpani, Percussion 1, 2, and 3, and Harp. The piano part is also shown. The harp part includes dynamic markings of *mf* and *f*.

E

$\frac{3}{4}$ poco accel. ----- $\frac{4}{4}$ poco rit. = 58

poco accel. ----- = 68

Musical score for violins, violas, and cellos. The score includes parts for Violin I & II, Viola, Violoncello, and Contrabasso. The strings play melodic lines with dynamic markings of *mf* and *p*.

Cello Concerto

F

69 poco rit. - ♩ = 68

Fl. 1
Fl. 2
Ob. 1
Ob. 2
B♭-Cl. 1
B♭-Cl. 2
Bsn. 1
Ctr. bsn.

Hn. 1
Hn. 2
Hn. 3
Hn. 4
C Tpt. 1
C Tpt. 2
Tbn. 1
Tbn. 2
B. Tbn.
Tuba

F

poco rit. - ♩ = 68

Timp.
Perc. 1
Perc. 2
Perc. 3
Hp.
Pho.

F

poco rit. - ♩ = 68

Vlc.
Vln. I
Vln. II
Vla.
Vcl.
Cb.



I Cello Concerto

102 $\frac{4}{4}$

$\frac{3}{4}$

Fl. 1
Fl. 2
Ob. 1
Ob. 2
B♭-Cl. 1
B♭-Cl. 2
Bsn. 1
Ctrbassoon
Hr. 1
Hr. 2
Hr. 3
Hr. 4
C Tpt. 1
C Tpt. 2
Tbn. 1
Tbn. 2
B. Tbn.
Tuba

change to Piccolo
Contrabassoon
open

$\frac{4}{4}$

I

$\frac{3}{4}$

Trmp.
Perc. 1
Perc. 2
Perc. 3
Hp.
Pno.

I

$\frac{3}{4}$

Vcl.
Vln. I
Vln. II
Vla.
Vlc.
Cb.

divisi
sempre tenuto

Cello Concerto

109 $\frac{3}{4}$

$\frac{4}{4}$ molto tenuto

Fl. 1 Piccolo *mf* *molto tenuto* *f* *mf* *change to Flute*

Ob. 1 *mf* *molto tenuto* *f* *mf* *mf*

Ob. 2 *mf* *molto tenuto* *f* *mf* *mf*

B♭-Cl. 1 *mf* *molto tenuto* *f* *mf* *mf*

B♭-Cl. 2 *mf* *molto tenuto* *f* *mf* *mf*

Bsn. 1 *mf* *molto tenuto* *f* *mf* *mf*

Ctr. bsn. *mf* *molto tenuto* *f* *mf* *change to Bassoon*

Hr. 1 *mf* *p* *f*

Hr. 2 *mf* *p* *f*

Hr. 3 *mf* *p* *f*

Hr. 4 *mf* *p* *f*

C. Tpt. 1 *mf* *p*

C. Tpt. 2 *mf* *p*

Tbn. 1 *mf* *p*

Tbn. 2 *mf* *p*

B. Tbn. *mf* *p*

Truba *mf* *p*

$\frac{3}{4}$ $\frac{4}{4}$

Tamp. *mf* *p*

Perc. 1 *mf*

Perc. 2 *mf* Small triangle

Perc. 3 *mf* Large Tam-tan *f* *mf* *Medium susp. cymb.* *f* *mf* *Large c. vib.* *mf*

Hp. *mf*

Pno. *mf* *mf*

$\frac{3}{4}$ $\frac{4}{4}$

Vl. *mf* *mf*

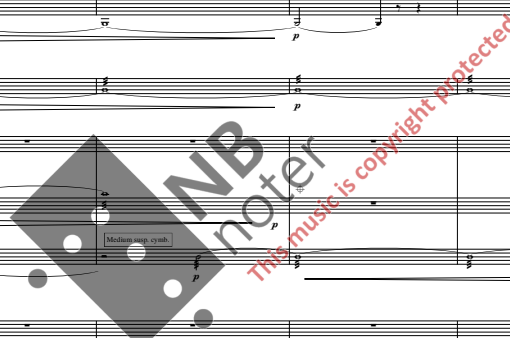
Vln. I *mf* *molto tenuto* *f* *mf* *mf* *mf*

Vln. II *mf* *molto tenuto* *f* *mf* *mf* *mf*

Vla. *mf* *mf* *f* *mf* *mf*

Vcl. *mf* *mf* *f* *mf* *mf*

Cb. *mf* *mf* *f* *mf* *mf*



Cello Concerto

117

J

2/4

3/4

4/4

Fl. 1
Fl. 2
Ob. 1
Ob. 2
Bb. Cl. 1
Bb. Cl. 2
Bsn. 1
Bsn. 2

Ha. 1
Ha. 2
Ha. 3
Ha. 4
C Tpt. 1
C Tpt. 2
Tbn. 1
Tbn. 2
B. Tbn.
Tuba

J

2/4

3/4

4/4

Timp.
Perc. 1
Perc. 2
Perc. 3
Hp.
Pno.

Vibraphone
Small wood block
Snare drum with snares

change to Celesta

J

2/4

3/4

4/4

Vlc.
Vln. I
Vln. II
Vla.
Vcllo
Cb.

Cello Concerto

125 $\frac{4}{4}$

K

Fl. 1
Fl. 2
Ob. 1
Ob. 2
B. Cl. 1
B. Cl. 2
Bsn. 1
Bsn. 2
Hr. 1
Hr. 2
Hr. 3
Hr. 4
C. Tpt. 1
C. Tpt. 2
Tbn. 1
Tbn. 2
B. Tbn.
Tuba

$\frac{4}{4}$

K

Tim.
Perc. 1
Perc. 2
Perc. 3
Hp.

Celosa

K

Vcl.
Vla. I
Vln. II
Vln. I
Vla.
Vlc.
Cb.

Cello Concerto

136

Fl. 1

Fl. 2

Ob. 1

Ob. 2

Bs. Cl. 1

Bs. Cl. 2

Bsn. 1

Bsn. 2

Ha. 1

Ha. 2

Ha. 3

Ha. 4

C. Tpt. 1

C. Tpt. 2

Tbn. 1

Tbn. 2

B. Tbn.

Tab. 1

Tab. 2

Tab. 3

Tim.

Perc. 1

Perc. 2

Perc. 3

Harp

Cel.

Vln. I

Vln. II

Vla.

Vcl.

Cb.

similar white key glissando

Large Tam-tam

This music is copyright protected

Cello Concerto

144

poco rit. ----- M 5/4 a tempo

3/4

Fl. 1
Picc.
Ob. 1
Ob. 2
B♭-Cl. 1
B♭-Cl. 2
Bsn. 1
Bsn. 2
Hrn. 1
Hrn. 2
Hrn. 3
Hrn. 4
C Tpt. 1
C Tpt. 2
Tbn. 1
Tbn. 2
B. Tbn.
Tuba

poco rit. ----- M 5/4 a tempo

3/4

Timp.
Perc. 1
Perc. 2
Perc. 3
Hp.
Cel.

Vibraphone
white key glissando
Medium size Cymb.

poco rit. ----- M 5/4 a tempo

3/4

Vcl.
Vln. I
Vln. II
Vla.
Vlc.
Cb.

divisi
pizz.
sempre tenuto
pp
f
mp
mf
pizz.
mf
pizz.
mf
pizz.
mf
pizz.
mf

Cello Concerto

N

149 $\frac{3}{4}$

$\frac{4}{4}$

$\frac{3}{4}$

$\frac{2}{4}$

$\frac{3}{4}$

Fl. 1
Picc.
Ob. 1
Ob. 2
B.-Cl. 1
B.-Cl. 2
Bsn. 1
Bsn. 2

Ha. 1
Ha. 2
Ha. 3
Ha. 4
C. Tpt. 1
C. Tpt. 2
Tbn. 1
Tbn. 2
B. Tbn.
Tuba

Timp.
Perc. 1
Perc. 2
Perc. 3
Hp.
Ccl.

Vle.
Vln. I
Vln. II
Vla.
Vcl.
Cb.

rit. ----- **O** *a tempo*
(♩ = 82)

3/**4**

Cello Concerto
4/**4**

2/**4**

Fl. 1
Picc.
Ob. 1
Ob. 2
B♭ Cl. 1
B♭ Cl. 2
Bsn. 1
Ctr. Bsn.

Hr. 1
Hr. 2
Hr. 3
Hr. 4
C Tpt. 1
C Tpt. 2
Tbn. 1
Tbn. 2
B. Tbn.
Tuba

rit. ----- **O** *a tempo*
(♩ = 82)

3/**4**

4/**4**

2/**4**

Timp.
Perc. 1
Perc. 2
Perc. 3
Hp.
Pno.

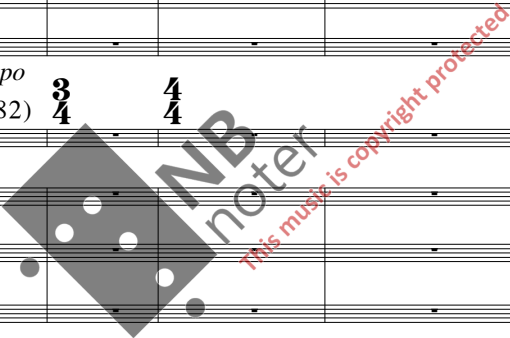
rit. ----- **O** *a tempo*
(♩ = 82)

3/**4**

4/**4**

2/**4**

Vcl.
Vln. I
Vln. II
Vla.
Vlc.
Cb.



Cello Concerto

174 $\frac{2}{4}$ $\frac{3}{4}$ $\frac{4}{4}$ **P** $\frac{3}{4}$

Tempo: p mf

Perc. 1: Medium susp. cymb. *lx*, Medium size metal bar *secco*, (cymbal)

Perc. 2: f

Perc. 3: f

Hp.:

Vcl. *arco*, *downward arpeggio*, ff , *gliss*, p , ff , *p subito*

180 $\frac{3}{4}$ $\frac{4}{4}$

Tempo: p mf

Perc. 1: Medium size metal bar, cymbal *lx*, non tremolo

Perc. 2: f

Perc. 3: f

Hp.:

Vcl. *downward arpeggio*, ff , *gliss*, *arco*, *downward arpeggio*, ff

Note in parenthesis should be played, it shows sul G (sul G)

188 $\frac{4}{4}$ *poco rit.* **Q** $\frac{5}{4}$ $\frac{4}{4}$ = 82 $\frac{3}{4}$ $\frac{5}{8}$ $\frac{3}{4}$ $\frac{4}{4}$

Tempo: p f

Perc. 1: Xylophone mf

Perc. 2:

Perc. 3:

Hp.:

Vcl. *downward arpeggio*, ff , *arco*, *downward arpeggio*, ff , $p < ff$, $ff > p < ff$, $ff > p < ff$, mf

notes in parenthesis should not be played, keep equal quadruple chord through gliss.

keep equal triple chord

sul C.G. sul D.A. sul G.D. sul G.D. sul D.A.

Cello Concerto

215

a tempo
S (♩ = 82)

Fl. 1
Picc.
Ob. 1
Ob. 2
B. Cl. 1
B. Cl. 2
Bsn. 1
Ctr. Bsn.
Ha. 1
Ha. 2
Ha. 3
Ha. 4
C. Tpt. 1
C. Tpt. 2
Tbn. 1
Tbn. 2
B. Tbn.
Tuba

a tempo
S (♩ = 82)

Temp.
Perc. 1
Perc. 2
Perc. 3
Hp.
Pno.

a tempo
S (♩ = 82)

Vcl.
Vln. I
Vln. II
Vla.
Vlc.
Cb.

Cello Concerto

228 (rit.) ----- 4/4 ♩ = 52

rit. -----

Fl. 1
 Picc.
 Ob. 1
 Ob. 2
 B♭ Cl. 1
 B♭ Cl. 2
 Bsn. 1
 Ctr. bsn.

Hrn. 1
 Hrn. 2
 Hrn. 3
 Hrn. 4
 C Tpt. 1
 C Tpt. 2
 Tbn. 1
 Tbn. 2
 B. Tbn.
 Tuba

(rit.) ----- 4/4 ♩ = 52

rit. -----

Temp.
 Perc. 1
 Perc. 2
 Perc. 3
 Hp.
 Pno.

(rit.) ----- 4/4 ♩ = 52

rit. -----

Vcl.
 Vln. I
 Vln. II
 Vla.
 Vcl.
 Cb.



Cello Concerto

10

A

Fl. 1
Fl. 2
Ob. 1
Ob. 2
B♭ Cl. 1
B♭ Cl. 2
Bsn. 1
Bsn. 2
Hn. 1
Hn. 2
Hn. 3
Hn. 4
C Tpt. 1
C Tpt. 2
Tbn. 1
Tbn. 2
B. Tbn.
Tuba

A

Timp.
Hp.

A

Vlc.
Vln. I
Vln. II
Vla.
Vcl.
Cb.

Cello Concerto

B

19 rit.----- a tempo

Fl. 1
Fl. 2
Ob. 1
Ob. 2
B♭ Cl. 1
B♭ Cl. 2
Bsn. 1
Bsn. 2
Hn. 1
Hn. 2
Hn. 3
Hn. 4
C Tpt. 1
C Tpt. 2
Tbn. 1
Tbn. 2
B. Tbn.
Tuba

B

rit.----- a tempo

Timp.
Hp.

B

rit.----- a tempo

Vic.
Vln. I
Vln. II
Vla.
Vic.
Cb.

Cello Concerto

28

Fl. 1 *p* *mf* *p*

Fl. 2 *p* *mf* *p*

Ob. 1 *mf*

Ob. 2 *mf*

B♭ Cl. 1 *mf*

B♭ Cl. 2 *mf*

Bsn. 1 *mf*

Bsn. 2 *mf*

Hn. 1 *p* *mf* *p*

Hn. 2 *p* *mf* *p*

Hn. 3 *p* *mp* *p* *mf* *p*

Hn. 4 *mp* *p* *mf* *p*

C Tpt. 1

C Tpt. 2

Tbn. 1 *p*

Tbn. 2 *p*

B. Tbn. *p*

Tuba *p*

Timp.

Hp.

Vlc. *mf* *mp*

Vln. I

Vln. II

Vla.

Vlc.

Cb.

NB noter
This music is copyright protected

Cello Concerto

C

37

rit. ----- $\text{♩} = 64$ (poco piu mosso)

Fl. 1
Fl. 2
Ob. 1
Ob. 2
B♭ Cl. 1
B♭ Cl. 2
Bsn. 1
Bsn. 2
Hn. 1
Hn. 2
Hn. 3
Hn. 4
C Tpt. 1
C Tpt. 2
Tbn. 1
Tbn. 2
B. Tbn.
Tuba

C

rit. ----- $\text{♩} = 64$ (poco piu mosso)

Temp.
Hp.

C

rit. ----- $\text{♩} = 64$ (poco piu mosso)

Vlc.
Vln. I
Vln. II
Vla.
Vcl.
Cb.

Cello Concerto

45

Fl. 1
Fl. 2
Ob. 1
Ob. 2
B♭ Cl. 1
B♭ Cl. 2
Bsn. 1
Ctr. bsn.
Hn. 1
Hn. 2
Hn. 3
Hn. 4
C Tpt. 1
C Tpt. 2
Tbn. 1
Tbn. 2
B. Tbn.
Tuba
Timp.
Hp.
Vcl.
Vln. I
Vln. II
Vla.
Vcl.
Cb.

NB noter
This music is copyright protected

Cello Concerto

D

rit.-----

53

Fl. 1
Fl. 2
Ob. 1
Ob. 2
B♭ Cl. 1
B♭ Cl. 2
Bsn. 1
Ctr. bsn.

Hn. 1
Hn. 2
Hn. 3
Hn. 4
C Tpt. 1
C Tpt. 2
Tbn. 1
Tbn. 2
B. Tbn.
Tuba

D

rit.-----

Timp.

Hp.

D

rit.-----

Vcl.

Vln. I

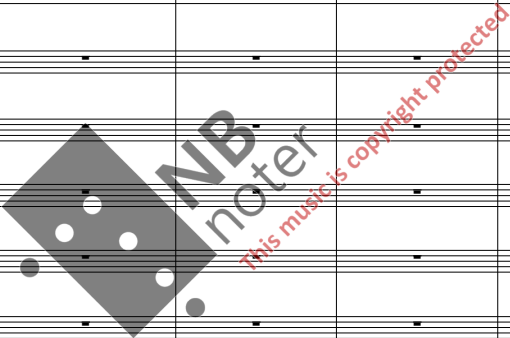
Vln. II

Vla.

Vcl.

Cb.

p



Cello Concerto

(rit.) ----- a tempo

E ♩ = 68 (poco piu mosso)

61

FL. 1, FL. 2, Ob. 1, Ob. 2, B♭-Cl. 1, B♭-Cl. 2, Bsn. 1, Ctr. bsn., Hn. 1, Hn. 2, Hn. 3, Hn. 4, C Tpt. 1, C Tpt. 2, Tbn. 1, Tbn. 2, B. Tbn., Tuba

(rit.) ----- a tempo

E ♩ = 68 (poco piu mosso)

Timp., Hp.

(rit.) ----- a tempo

E ♩ = 68 (poco piu mosso)

Vcl., Vln. I, Vln. II, Vla., Vcl. (divisi), Cb.

Cello Concerto

69 *accel.* ----- ♩ = 76 (*poco più mosso*)

Fl. 1
Fl. 2
Ob. 1
Ob. 2
B♭ Cl. 1
B♭ Cl. 2
Bsn. 1
Ctr. bsn.
Hn. 1
Hn. 2
Hn. 3
Hn. 4
C Tpt. 1
C Tpt. 2
Tbn. 1
Tbn. 2
B. Tbn.
Tuba

p *mf* *p* *mf* *p*
mp
p *p* *p*

accel. ----- ♩ = 76 (*poco più mosso*)

Temp.
Hp.

mp

accel. ----- ♩ = 76 (*poco più mosso*)

Vcl.
Vln. I
Vln. II
Vla.
Vlc.
Cb.

mf
p *mf* *p* *mf* *p* *mf* *p* *mf* *p* *mf* *p* *mf* *p* *mf* *p* *mf* *p*
pizz.
mf

Cello Concerto

F

accel.-----

77

Fl. 1

Fl. 2

Ob. 1

Ob. 2

Bs. Cl. 1

Bs. Cl. 2

Bsn. 1

Ctr. bsn.

Hn. 1

Hn. 2

Hn. 3

Hn. 4

C Tpt. 1

C Tpt. 2

Tbn. 1

Tbn. 2

B. Tbn.

Tuba

F

accel.-----

Timp.

Hp.

F

accel.-----

Vic.

Vln. I

Vln. II

Vla.

Vcl.

Cb.

Cello Concerto

(accel.) **G** ♩ = 82 (poco piu mosso)

85

Fl. 1
Fl. 2
Ob. 1
Ob. 2
B♭ Cl. 1
B♭ Cl. 2
Bsn. 1
Ctr. bsn.
Hn. 1
Hn. 2
Hn. 3
Hn. 4
C Tpt. 1
C Tpt. 2
Tbn. 1
Tbn. 2
B. Tbn.
Tuba

(accel.) **G** ♩ = 82 (poco piu mosso)

Timp.
Hp.

(accel.) **G** ♩ = 82 (poco piu mosso)

Vic.
Vln. I
Vln. II
Vla.
Vlc.
Cb.

Cello Concerto

rit.-----

90

Fl. 1
Fl. 2
Ob. 1
Ob. 2
B. Cl. 1
B. Cl. 2
Bsn. 1
Ctr. Bsn.
Hn. 1
Hn. 2
Hn. 3
Hn. 4
C. Tpt. 1
C. Tpt. 2
Tbn. 1
Tbn. 2
B. Tbn.
Tuba

mf *p*

rit.-----

Timp.
Hp.

rit.-----

Vic.
Vln. I
Vln. II
Vla.
Vcl.
Cb.

tenuto *arco tenuto* *f* *p*

Cello Concerto

H 97 ♩ = 56 (Tempo I)

Fl. 1
Fl. 2
Ob. 1
Ob. 2
B♭ Cl. 1
B♭ Cl. 2
Bsn. 1
Ctr. bsn. (change to Bassoon)
Hn. 1
Hn. 2
Hn. 3
Hn. 4
C Tpt. 1
C Tpt. 2
Tbn. 1
Tbn. 2
B. Tbn.
Tuba

H ♩ = 56 (Tempo I)

Timp.
Hp. (mp)

H ♩ = 56 (Tempo I)

Vcl. (mf)
Vln. I (p)
Vln. II (p)
Vla. (p)
Vlc. (p) (divisi)
Cb. (mp) (pizz.)



Cello Concerto

J

116

Fl. 1
Fl. 2
Ob. 1
Ob. 2
B. Cl. 1
B. Cl. 2
Bsn. 1
Bsn. 2
Hn. 1
Hn. 2
Hn. 3
Hn. 4
C Tpt. 1
C Tpt. 2
Tbn. 1
Tbn. 2
B. Tbn.
Tuba

J

Temp.
Hp.

J

Vlc.
Vln. I
Vln. II
Vla.
Vcl.
Cb.

Cello Concerto

poco rit.

$\frac{2}{4}$

$\frac{5}{4}$

$\frac{4}{4}$ *a tempo*

molto rit.

$\frac{2}{4}$

15

Fl. 1
Picc.
Ob. 1
Ob. 2
B. Cl. 1
B. Cl. 2
Bsn. 1
Bsn. 2
Hn. 1
Hn. 2
Hn. 3
Hn. 4
C. Tpt. 1
C. Tpt. 2
Tbn. 1
Tbn. 2
B. Tbn.
Tuba
Timp.
Perc. 1
Perc. 2
Perc. 3
Hp.
Pho.
Vcl.
Vln. I
Vln. II
Vla.
Vlc.
Cb.

sempre laissez vibrer

poco rit.

$\frac{2}{4}$

$\frac{5}{4}$

$\frac{4}{4}$ *a tempo*

molto rit.

$\frac{2}{4}$

f, *p*, *mf*

NB noter
This music is copyright protected

B Cello Concerto

(molto rit.) - $\frac{5}{4}$ ♩ = 52

$\frac{4}{4}$ ♩ = 98

Fl. 1
Picc.
Ob. 1
Ob. 2
B♭ Cl. 1
B♭ Cl. 2
Bsn. 1
Bsn. 2
Hr. 1
Hr. 2
Hr. 3
Hr. 4
C Tpt. 1
C Tpt. 2
Tbn. 1
Tbn. 2
B. Tbn.
Tuba

(molto rit.) - $\frac{2}{4}$ ♩ = 52

B $\frac{4}{4}$ ♩ = 98

Timp.
Perc. 1
Perc. 2
Perc. 3
Hp.
Pno.

(molto rit.) - $\frac{2}{4}$ ♩ = 52

B $\frac{4}{4}$ ♩ = 98

Vcl.
Vla. I
Vla. II
Vla.
Vcl.
Cb.

Cello Concerto

27

C

3/4

2/4

Fl. 1
Picc.
Ob. 1
Ob. 2
B. Cl. 1
B. Cl. 2
Bsn. 1
Bsn. 2

Hr. 1
Hr. 2
Hr. 3
Hr. 4
C Tpt. 1
C Tpt. 2
Tbn. 1
Tbn. 2
B. Tbn.
Tuba

C

3/4

2/4

Timp.
Perc. 1
Perc. 2
Perc. 3
Hp.
Pao.

C

3/4

2/4

Vcl.
Vln. I
Vln. II
Vla.
Vlc.
Cb.

Cello Concerto

D

49

poco rit. - $\frac{2}{4}$ *a tempo*

$\frac{3}{4}$

$\frac{4}{4}$

rit. - - - - -

Musical score for woodwinds and brass instruments. The score includes parts for Flute 1 & 2, Oboe 1 & 2, Bassoon 1 & 2, Horn 1-4, Trumpet 1 & 2, Trombone 1 & 2, and Tuba. The woodwinds and brass parts feature various dynamics such as *p*, *f*, *mf*, and *mf subito*. The woodwinds have long, sustained notes with some melodic movement. The brass parts are more rhythmic and provide harmonic support.

D

poco rit. - $\frac{2}{4}$ *a tempo*

$\frac{3}{4}$

$\frac{4}{4}$

rit. - - - - -

Musical score for percussion and harp. The percussion parts include Timpani, Percussion 1, 2, and 3, and Bass Drum. The harp part is also included. The percussion parts feature various dynamics such as *p*, *f*, and *mp*. The harp part has a melodic line with some arpeggiated figures. A watermark "MP noter" is visible over the score.

D

poco rit. - $\frac{2}{4}$ *a tempo*

$\frac{3}{4}$

$\frac{4}{4}$

rit. - - - - -

Musical score for string instruments. The score includes parts for Violin I & II, Viola, Violoncello (Cello), and Contrabasso (Double Bass). The string parts feature various dynamics such as *mf*, *f*, and *mf subito*. The Violin I and II parts have melodic lines with some arpeggiated figures. The Viola, Cello, and Double Bass parts provide harmonic support and rhythmic accompaniment. Some parts are marked "divisi" (divided).

Cello Concerto

E

(rit.) $\bullet = 88$

rit. $\bullet = 68$

58

FL. 1

FL. 2

Ob. 1

Ob. 2

B♭ Cl. 1

B♭ Cl. 2

Bsn. 1

Bsn. 2

Hr. 1

Hr. 2

Hr. 3

Hr. 4

C Tpt. 1

C Tpt. 2

Tbn. 1

Tbn. 2

B. Tbn.

Tuba

(rit.) $\bullet = 88$

rit. $\bullet = 68$

Timp.

Perc. 1

Perc. 2

Perc. 3

Hp.

Pno.

(rit.) $\bullet = 88$

rit. $\bullet = 68$

Vic.

Vln. I

Vln. II

Vla.

Vlc.

Ch.

divisi

Cello Concerto

G

87

poco rit. - a tempo

poco rit. - - - - - a tempo

FL 1
Picc.
Ob. 1
Ob. 2
B♭ Cl. 1
B♭ Cl. 2
Bsn. 1
Ctr. bsn.

Hn. 1
Hn. 2
Hn. 3
Hn. 4
C Tpt. 1
C Tpt. 2
Tbn. 1
Tbn. 2
B. Tbn.
Tuba

poco rit. - a tempo

poco rit. - - - - - a tempo

G

Timp.
Perc. 1
Perc. 2
Perc. 3

Hp.
Pno.

poco rit. - a tempo

poco rit. - - - - - a tempo

G

Vcl.
Vln. I
Vln. II
Vla.
Vlc.
Cb.

Cello Concerto

141

K

2/4

3/4

2/4

FL. 1, FL. 2, Ob. 1, Ob. 2, B♭ CL. 1, B♭ CL. 2, Bsn. 1, Bsn. 2

Hn. 1, Hn. 2, Hn. 3, Hn. 4, C Tpt. 1, C Tpt. 2, Tbn. 1, Tbn. 2, B. Tbn., Tuba

Timp., Perc. 1, Perc. 2, Perc. 3

Hp., Pno.

K

2/4

3/4

2/4

Vic., Vin. I, Vin. II, Via., Vic., Cb.

Cello Concerto

158 $\frac{4}{4}$

M

FL. 1
Picc.
Ob. 1
Ob. 2
B♭ Cl. 1
B♭ Cl. 2
Bsn. 1
Bsn. 2
Hn. 1
Hn. 2
Hn. 3
Hn. 4
C Tpt. 1
C Tpt. 2
Tbn. 1
Tbn. 2
B. Tbn.
Tuba

$\frac{4}{4}$
Timp.
Perc. 1
Perc. 2
Perc. 3
Hp.
Pno.

$\frac{4}{4}$
Vcl.
Vln. I
Vln. II
Vla.
Vlc.
Cb.



Cello Concerto

176 $\frac{4}{4}$

O

$\frac{2}{4}$

$\frac{3}{4}$

Fl. 1
Pec.
Ob. 1
Ob. 2
B. Cl. 1
B. Cl. 2
Bsn. 1
Bsn. 2
Hr. 1
Hr. 2
Hr. 3
Hr. 4
C. Tpt. 1
C. Tpt. 2
Tbn. 1
Tbn. 2
B. Tbn.
Tuba
Timp.
Perc. 1
Perc. 2 (bass drum)
Perc. 3
Hp.
Pno.
Vcl.
Vln. I
Vln. II
Vla.
Vcl.
Cb.

O

$\frac{2}{4}$

$\frac{3}{4}$

O

$\frac{2}{4}$

$\frac{3}{4}$

Cello Concerto

P

181 $\frac{3}{4}$

$\frac{4}{4}$

Fl. 1
Picc.
Ob. 1
Ob. 2
B♭ Cl. 1
B♭ Cl. 2
Bsn. 1
Bsn. 2
Ha. 1
Ha. 2
Ha. 3
Ha. 4
C Tpt. 1
C Tpt. 2
Tbn. 1
Tbn. 2
B. Tbn.
Tuba

$\frac{3}{4}$

$\frac{4}{4}$

P

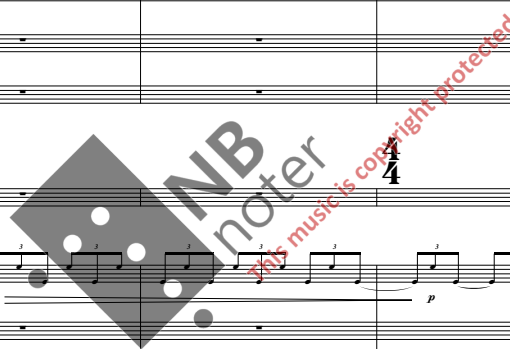
Timp.
Perc. 1
Perc. 2
Perc. 3
Hp.
Pno.

$\frac{3}{4}$

$\frac{4}{4}$

P

Vcl.
Vla. I
Vla. II
Vla.
Vlc.
Cb.



Cello Concerto

192

Q $\frac{3}{4}$

FL. 1
Pic.
Ob. 1
Ob. 2
B. Cl. 1
B. Cl. 2
Bsn. 1
Ctr. bsn.
Hn. 1
Hn. 2
Hn. 3
Hn. 4
C. Tpt. 1
C. Tpt. 2
Tbn. 1
Tbn. 2
B. Tbn.
Tuba
Timp.
Perc. 1
Perc. 2
Perc. 3
Hp.
Pno.

Q $\frac{3}{4}$

Vcl.
Vln. I
Vln. II
Vla.
Vlc.
Cb.

Cello Concerto

poco rit.-----

202

2/4

3/4

4/4

2/4

3/4

4/4

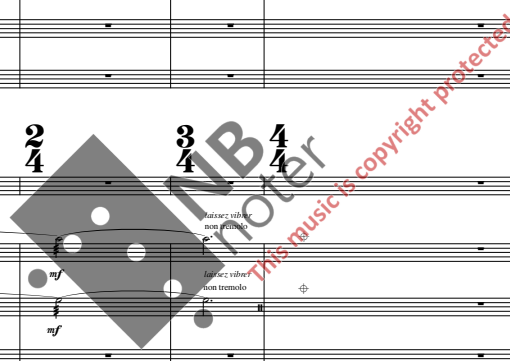
Fl. 1
Pic.
Ob. 1
Ob. 2
B.Cl. 1
B.Cl. 2
Bsn. 1
Ctr.bsn.

Hn. 1
Hn. 2
Hn. 3
Hn. 4
C.Tpt. 1
C.Tpt. 2
Tbn. 1
Tbn. 2
B. Tbn.
Tuba

Timp.
Perc. 1
Perc. 2
Perc. 3

Hp.
Pno.

Vcl.
Vln. I
Vln. II
Vla.
Vlc.
Cb.



Cello Concerto

R $\frac{4}{4}$ $\text{♩} = 86$
208 *pochissimo meno mosso*

$\frac{3}{4}$

Fl. 1
Picc.
Ob. 1
Ob. 2
B♭ Cl. 1
B♭ Cl. 2
Bsn. 1
Ctr. bsn.
Hr. 1
Hr. 2
Hr. 3
Hr. 4
C Tpt. 1
C Tpt. 2
Tbn. 1
Tbn. 2
B. Tbn.
Tuba

R $\frac{4}{4}$ $\text{♩} = 86$
pochissimo meno mosso

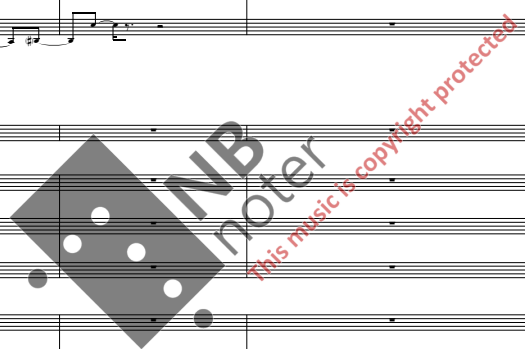
$\frac{3}{4}$

Temp.
Perc. 1
Perc. 2
Perc. 3
Hp.
Pas.

R $\frac{4}{4}$ $\text{♩} = 86$
pochissimo meno mosso

$\frac{3}{4}$

Vln. I
Vln. II
Vla.
Vcl.
Cb.



Cello Concerto

213 $\frac{3}{4}$

$\frac{4}{4}$ poco rit.

S $\text{♩} = 80$

pochissimo meno mosso

rit.

Fl. 1
Picc.
Ob. 1
Ob. 2
Bb-Cl. 1
Bb-Cl. 2
Bsn. 1
Ctrbn.

change to Flute
change to Bassoon

ff *mf* *ff* *mf* *ff* *mf* *ff* *mf*

sempre tenuto *f* *mf*

Ha. 1
Ha. 2
Ha. 3
Ha. 4
C Tpt. 1
C Tpt. 2
Tbn. 1
Tbn. 2
B. Tbn.
Tuba

mf *mf* *mf* *mf* *mf* *mf* *mf* *mf*

$\frac{3}{4}$

$\frac{4}{4}$ poco rit.

S $\text{♩} = 80$

pochissimo meno mosso

rit.

Timp.
Perc. 1
Perc. 2
Perc. 3
Hp.

ff *mf* *f* *mf*

Triangle
Bass drum

Pno.

ff

$\frac{3}{4}$

$\frac{4}{4}$ poco rit.

S $\text{♩} = 80$

pochissimo meno mosso

rit.

Vln. I
Vln. II
Vla.
Vcl.
Cb.

divisa a 2 *sempre tenuto* *f* *mf* *f* *mf* *f* *mf*

(rit.)

Cello Concerto

T ♩ = 52

218

3/4

4/4

Fl. 1
Fl. 2
Ob. 1
Ob. 2
B. Cl. 1
B. Cl. 2
Bsn. 1
Bsn. 2

Hr. 1
Hr. 2
Hr. 3
Hr. 4
C Tpt. 1
C Tpt. 2
Tbn. 1
Tbn. 2
B. Tbn.
Tuba

(rit.)

3/4

4/4

T ♩ = 52

Timp.
Perc. 1
Perc. 2
Perc. 3
Hp.
Pno.

(rit.)

3/4

4/4

T ♩ = 52

Vla. I
Vla. II
Vla.
Vcl.
Cb.

Cello Concerto

226

Fl. 1 *p* *mf* *mp* *mf* *mp* *p* *mp*

Fl. 2 *p* *mf* *mp* *mf* *mp* *p* *mp* *change to Piccolo*

Ob. 1 *mf* *mp* *mf* *mp* *p* *mp*

Ob. 2 *mf* *mp* *mf* *mp* *p* *mp*

B. Cl. 1 *mp*

B. Cl. 2 *p* *mp*

Bsn. 1 *p*

Bsn. 2

Hn. 1

Hn. 2

Hn. 3 *mp*

Hn. 4 *mp*

C. Tpt. 1

C. Tpt. 2

Tbn. 1

Tbn. 2

B. Tbn.

Tuba

Timp.

Perc. 1 *Vibraphone* *p* *mp*

Perc. 2

Perc. 3

Hp. *mp* *mf* *mp* *mf* *mp*

Pno.

Vcl. *sempre tenuto e non marcato* *p* *mp* *sempre tenuto ma poco marcato* *p* *non marcato* *mp*

Vln. I

Vln. II

Vla.

Vcl. *V*

Cb.

Cello Concerto

235

U

Fl. 1
Picc.
Ob. 1
Ob. 2
B♭ Cl. 1
B♭ Cl. 2
Bsn. 1
Bsn. 2

Dynamic markings: *p*, *mf*, *son flutter*, *p*

Performance instruction: *mf* *son flutter* *p*

Hn. 1
Hn. 2
Hn. 3
Hn. 4
C Tpt. 1
C Tpt. 2
Tbn. 1
Tbn. 2
B. Tbn.
Tuba

Dynamic markings: *mp*

U

Timp.
Perc. 1
Perc. 2
Perc. 3

Dynamic markings: *p*, *mf*, *p*

Performance instruction: *mf* *Glockenspiel* *mf*

Performance instruction: *Bass drum* *p*

Hp.
Pno.

Dynamic markings: *mf*, *mf*

U

Vcl.
Vln. I
Vln. II
Vla.
Vlc.
Cb.

Dynamic markings: *mp*, *mf*, *p*, *mf*, *p*

Performance instruction: *2 soli* *solo 1: prest* *mf* *Gli altri* *p*

Performance instruction: *divisi* *p* *divisi* *p* *divisi* *p* *divisi* *p*

Cello Concerto

242

accel.-----

FL. 1
Picc.
Ob. 1
Ob. 2
B♭ Cl. 1
B♭ Cl. 2
Bsn. 1
Bsn. 2
Hn. 1
Hn. 2
Hn. 3
Hn. 4
C Tpt. 1
C Tpt. 2
Tbn. 1
Tbn. 2
B. Tbn.
Tuba

accel.-----

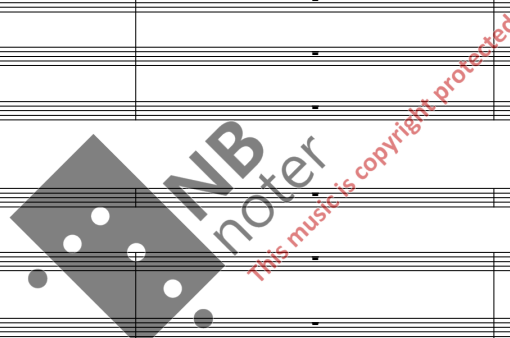
Timp.
Perc. 1
Perc. 2
Perc. 3

Hp.

Pno.

accel.-----

Vcl.
Vln. I
Vln. II
Vla.
Vlc.
Cb.



Cello Concerto

(accel.) 246

♩ = 80

V

FL. 1

Picc.

Ob. 1

Ob. 2

B♭ Cl. 1

B♭ Cl. 2

Bsn. 1

Bsn. 2

Hr. 1

Hr. 2

Hr. 3

Hr. 4

C Tpt. 1

C Tpt. 2

Tbn. 1

Tbn. 2

B. Tbn.

Tuba

(accel.)

♩ = 80

V

Timp.

Perc. 1

Perc. 2

Perc. 3

Hp.

Pno.

(accel.)

♩ = 80

V

Vcl.

Vln. I

Vln. II

Vla.

Vlc.

Cb.

whole tone trill

non trill

unisi, divisi a 2

divisi

unisi

non tremolo

Small triangle

Cello Concerto

251

Fl. 1
Picc.
Ob. 1
Ob. 2
B. Cl. 1
B. Cl. 2
Bsn. 1
Bsn. 2
Hn. 1
Hn. 2
Hn. 3
Hn. 4
C Tpt. 1
C Tpt. 2
Tbn. 1
Tbn. 2
B. Tbn.
Tuba
Timp.
Perc. 1
Perc. 2
Perc. 3
Hp.
Pno.
Vlc.
Vln. I
Vln. II
Vla.
Vcl.
Cb.

NB noter
This music is copyright protected

