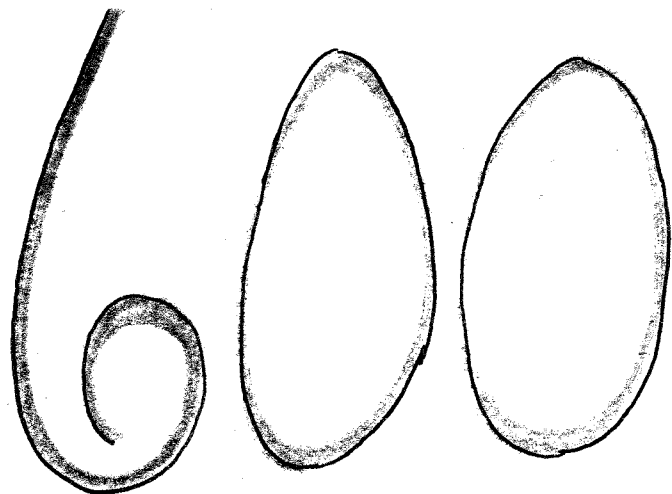
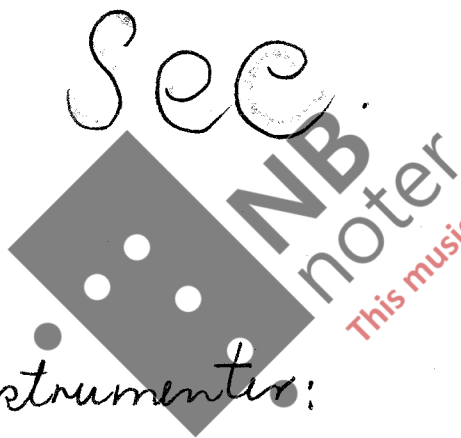


Ketil Vear:



- I Violin, klarinett, tenorsaxofon, klokkepill
- II Violin, saksorn og altmetallofon, triangel
- III Violin, altxylofon, el. orgel
- IV Trompet, klaver, tamburin
- V Klaver, bassxylofon
- VI Klaver, gong
- VII El. gitar, kontrabass

for div. instrumenter:



This music is copyright protected

Sec.: 0 10 20 25 30 40 50 60 64 70

I  
II  
III  
IV  
V  
VI  
VII

Tri (P) 5 15 23 45 55

Cl. (P) 25

Or. II (P) 15

Pi (P) 5 15

Sra. basso Ped. 5

Pi (P) 5

Sra. basso Ped. 5

Cl. (P) 37

arco

klsp.

Alt. Mt.

fff

El. git. (ff)

80

90

100

110

120

130

140

I *klsp*

II *alt met.* *mf*

III *f*

IV *tamb.* *mf*

85 95

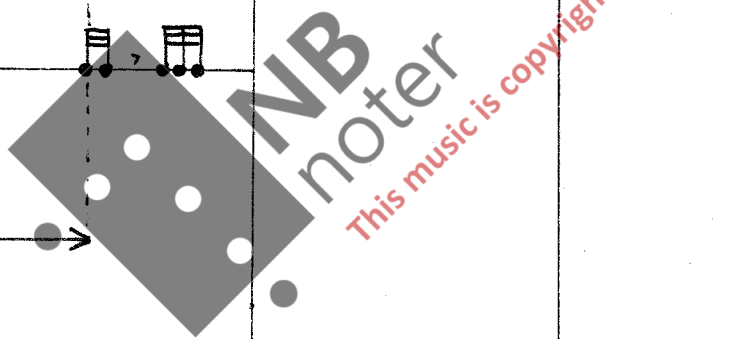
V *b. xyl.* *f* *mf*

VI *Go* *f*

VII *dr.* *mf* *pizz.*

II *PP* *P* *mf*

III *Fjerrverk*



150

160

170

180

190

200

210

I

II

III

IV

V

VI

VII

Handwritten musical notation for staves I, II, and III. It features dynamic markings *f*, *ff*, and *fff* in circles, with lines indicating a crescendo from *f* to *fff* across the measures.

Handwritten musical notation for staff IV, labeled "tamb.". It includes dynamic markings *f*, *ff*, and *fff* in circles, with a wavy line above the staff and a crescendo line below.

Handwritten musical notation for staff VI, labeled "Go". It features dynamic markings *f* and *fff* in circles, with a wavy line above the staff and a crescendo line below.

Main handwritten musical score for staves I through VII. It includes various instruments and dynamic markings:

- Staff I:** *ff* dynamic marking.
- Staff II:** *ff* dynamic marking.
- Staff III:** *ff* dynamic marking.
- Staff IV:** *ff* dynamic marking.
- Staff V:** *ff* dynamic marking.
- Staff VI:** *ff* dynamic marking.
- Staff VII:** *ff* dynamic marking.

Additional markings include *mf* and *f* in circles, and dynamic changes like *ff* to *mf* and *f* to *p*. Performance instructions include "improv. rythm. fitt", "Ten Sax.", "Sopr. mit.", "alt xyl.", "conv sord.", "bass xyl.", "Pi", "18va basso", and "El. 9:2".



Handwritten musical score for staves I through VII, measures 218-240.

**Staff I:** vl. pizz. (Violin, pizzicato), measures 218-220. Dynamic  $f$ .

**Staff II:** vl. pizz. (Violin, pizzicato), measures 215-220. Dynamic  $f$ .

**Staff III:** vl. pizz. (Violin, pizzicato), measures 215-220. Dynamic  $f$ .

**Staff IV:** tamb. (Tambourine), measures 212-218. Dynamic  $P$ .

**Staff V:** xyl. (Xylophone), measures 212-218. Dynamic  $f$ .

**Staff VI:** Go (Gong), measures 212-218. Dynamic  $P$ .

**Staff VII:** cb pizz. (Cello, pizzicato), measures 214-228. Dynamic  $f$ .

Measures 246-248 are also indicated for Staff VII.

Handwritten musical score for staves cl., tr., and El. guitar, measures 260-280.

**Staff cl. (Clarinet):** measures 260-270. Dynamic  $ffz$ .

**Staff tr. (Trumpet):** measures 268-275. Dynamic  $ffz$ . Includes markings: *fienmark*, *vibr. I*, *vibr. II*.

**Staff El. guitar:** measures 268-275. Dynamic  $ffz$ . Includes marking: *con 8va basso*.

Measures 255-258 are also indicated for the El. guitar staff.

Additional markings: *vibrato* and *El. guitar* at the bottom right.

**G.P.**  
 NB noter  
 This music is copyright protected

290

300

310

320

330

340

350

I

*improv. extm. fitt*

*alt mit.* **mf**

*Sopri. mit.* *improv. extm. fitt*

III **P**

315

*tr. Sord.* *improv. extm. fitt.*

IV

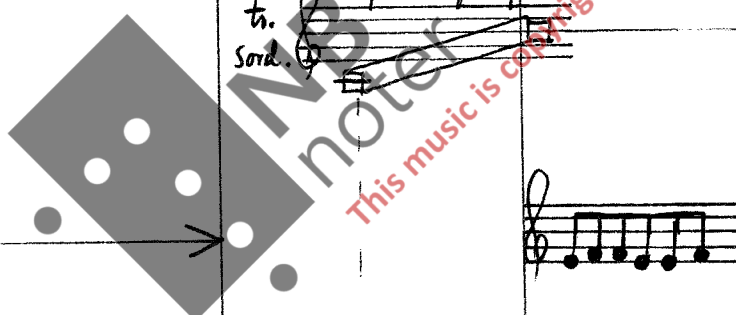
*bas. xyl.* **mf**

VI

**Go** **mf**

VII

*cl. pizz.* *improv. extm. fitt.*



360

370

380

390

400

410

420

I

II

III

IV

V

VI

VII

klsp. **f**  
 > > >  
 impros. tonalt fitt  
 på hela klaviaturet

*molto crescendo*

mf.  
 Sopr. mut. > > >

**f**

**f**  
 > > >  
 impros. tonalt fitt  
 på hela klaviaturet

*molto crescendo*

365  
 p  
 p  
 > > >  
 impros. tonalt fitt  
 över hela klaviaturet

**mf**

Ped

355  
 p  
 p  
 > > >  
 impros. tonalt fitt  
 över hela klaviaturet

**mf**

**f**

Ped

*molto crescendo*

**mf**  
 Go  
 p  
 > > >  
 impros. tonalt fitt  
 över hela klaviaturet

**mf**

**f**

cb.  
 p33  
 > > >  
 impros. tonalt fitt

**f**

430

440

450

460

470

480

490

I

II

III

IV

V

VI

VII

vl.



455



465



475



mf

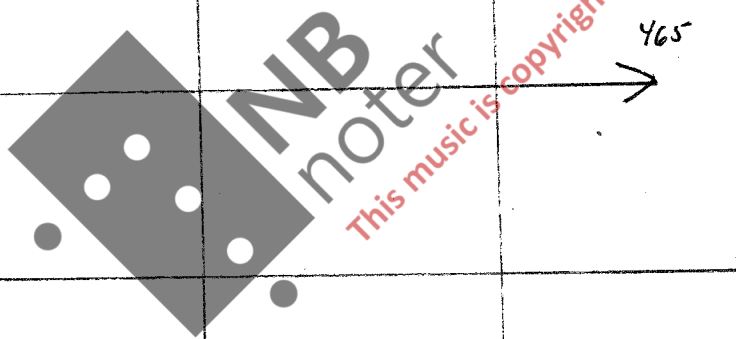
Ped.

mf

Ped.

mf

arco



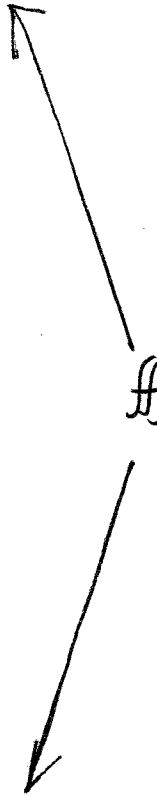
klap.

Sops. mlt.

Fl. orgel

fff

cg





500

510

520

530

540

550

560

cl. *mf*

alt mit. *mf*

alt xyl. *mf*

522

532  
tramp d

525

*mf* 532  
*ff*  
Go *ff*

*mf*

Ten. Sax. *ff*

El org. *ff*

553

El. org. *ff* *mp*

*ff*

This music is copyright protected

570

580

590

600

I

II

III

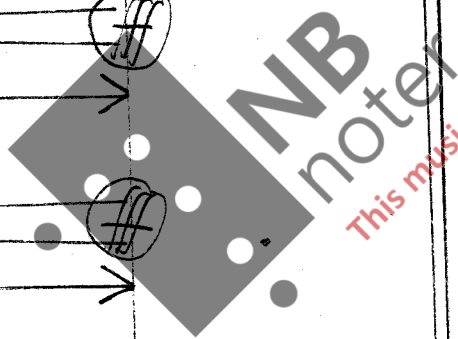
IV

V

VI

cb.

VII



This music is copyright protected