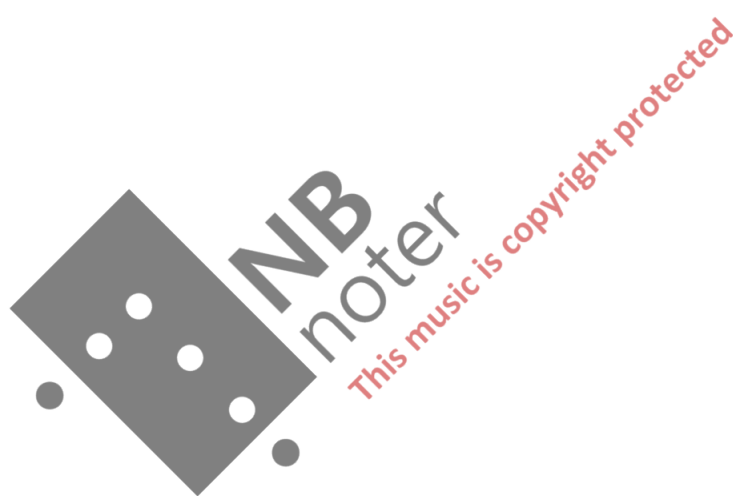

SYMPHONY No. 1

Ivar Lunde, jr. Opus 57



Instrumentering:

2 Fløyter
1 Pikkolo (c)
2 Oboer
1 Engelsk horn
1 Klarinett i Ess (2. og 3. nato)
2 Klarinetter i B
1 Bassklarinett i B (♭)
2 Fagotter
4 Horn i F
4 Trompeter i B
3 Tromboner
1 Tuba
Pauker

Slagverk:

Xylophone, Vibes (vibrajon), Klakkespill, Gong, Stort bekk
(fritthengende), Litet bekk (fritthengende), Bekken, Treblakk,
Triangel, Tamburin, Lilletrokke, Stortromme.

Celeste

Harpe

Strykere

SYMPHONI NR. 1

Jvar Lunde, jr. Op. 57 (1976)

Uttrykksfullt, ikke for hurtigt (♩ = ca. 69)

Fløyte 1
Fløyte 2
Pikkato i C
Obo 1+2
Engelak horn
Klarinett i B 1
Klarinett i B 2
Bassklarinett i B
Fagott 1+2

Horn i F 1+3
Horn i F 2+4
Trompet i B 1+2
Trompet i B 3+4
Trombone 1+2
Trombone 3
Tuba

Pauke
Slagverk
GONG
ppp

Harpe
Ped. D, C, H, E, F, G, A

Violin 1
Violin 2
Bratø
Cello
Bass

Fl.
Fl.
Ob.
E. horn
Kl.
Bkl.
Fg.

This section contains the musical notation for the woodwind instruments. The Flute (Fl.) and Bassoon (Fg.) parts are mostly silent in this section. The Clarinet (Kl.) and Bass Clarinet (Bkl.) parts feature complex rhythmic patterns with triplets and sixteenth notes. The Oboe (Ob.) and English Horn (E. horn) parts are also silent.

Hrn.
Tnpt.
Trb.
Tuba

This section contains the musical notation for the brass instruments. The Horn (Hrn.) part is marked *unio.* and *mf*. The Trumpet (Tnpt.) part is marked *mf*. The Trombone (Trb.) part is marked *mf*. The Tuba part is marked *mf*. The music features a melodic line with some chromaticism.

Pk.
Str.

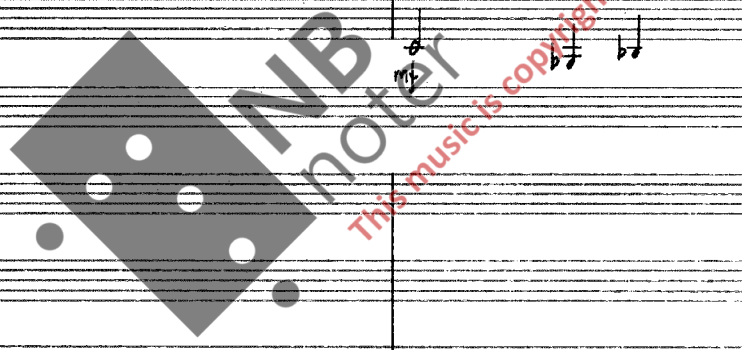
This section contains the musical notation for Percussion (Pk.) and Strings (Str.). Both parts are silent in this section.

Hrp.

This section contains the musical notation for the Harp (Hrp.), which is silent in this section.

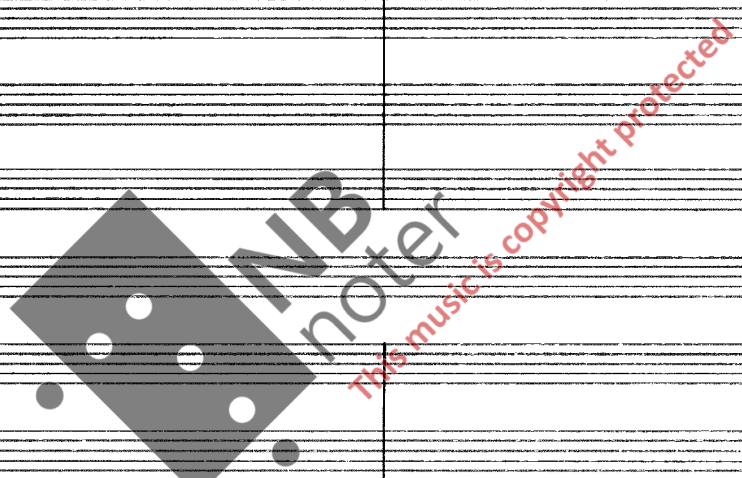
Vln 1
Vln 2
Vc.
Bst.
Bass

This section contains the musical notation for the string instruments. Violin 1 (Vln 1) and Violin 2 (Vln 2) are marked *pp* and *pp* respectively. The Viola (Vc.) part is marked *pp* and *CON SORD.*. The Cello (Bst.) part is marked *pp*. The Bass part is marked *mf* and *molto espressivo*. The string parts feature a rhythmic pattern of eighth notes.



Fl.
Pk.
Ob.
E. horn.
Kl.
Bkl.
Fa.

Hrn.
Tpt.
Trb.
Tuba
Pk.
Str.



Hrp.

Vln 1
Vln 2
Vcl.
Bst.
Bsn.

Fl. *mp*

Ph.

Ob.

E. har.

Kl. *pp*

Bkl. *pp*

Fg.

Hrn.

Trpt. *CON SORD.* *mp*

Tub.

Tuba

Ph.

Str.

Triangel *p*

Harp.

Ped. D¹, C¹, B, E^b, F, G, A^b

Vln. 1 *pppp* modo ord. e senza sord.

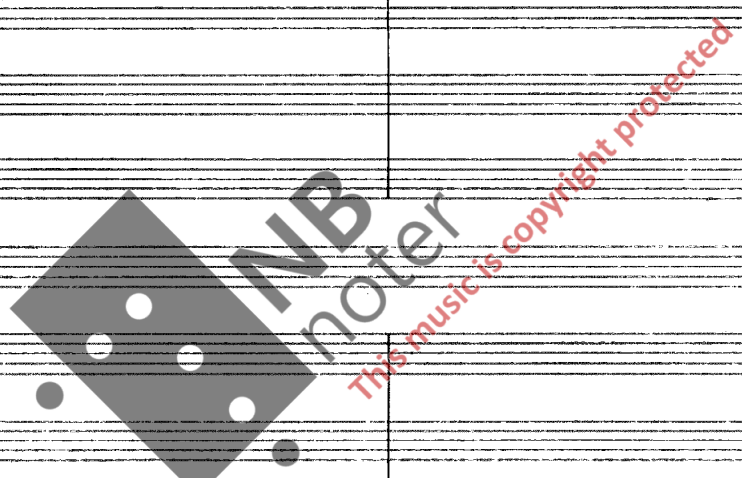
Vln. 2 *pppp* modo ord. e senza sord.

Viol. *pppp* modo ord. e senza sord.

Viol. *pppp* modo ord. e senza sord.

Viol. *pppp* modo ord. e senza sord.

Bass



Fl
Ph.
Ob.
E.han.
Kl.
Bkl.
Fg.

Man
Tpt.
Tob.
Tuba

senza sord.
senza sord.

1 st.

CON AORP.
CON SORD.

ppp
pp
pp
pp

Ph.
Slo.

Tamburin (med hand)

Xylophone

ppp
pp

Hrp.

Vln. 1
Vln. 2
Brd.
Vc
Bass

ppp

Fl.
Ph.
Ob.
E. har.
Kl.
Bkl.
Fg.

This section of the score includes parts for Flute (Fl.), Piccolo (Ph.), Oboe (Ob.), English Horn (E. har.), Clarinet (Kl.), Bass Clarinet (Bkl.), and Bassoon (Fg.). The notation is complex, featuring various rhythmic patterns, accidentals, and dynamic markings such as *ff* and *uniso.*

Hrn.
Trpt.
Trb.
Tuba

This section includes parts for Horn (Hrn.), Trumpet (Trpt.), Trombone (Trb.), and Tuba. The notation is primarily chordal and harmonic, with some melodic lines for the Horn and Trombone parts.

Ph.
Str.
Hrp.

This section includes parts for Piccolo (Ph.), Strings (Str.), and Harp (Hrp.). The string parts are mostly sustained chords and textures, while the harp part has some specific melodic and harmonic contributions.

Vln. 1
Vln. 2
Vcl.
Bass

This section includes parts for Violin 1 (Vln. 1), Violin 2 (Vln. 2), Violoncello (Vcl.), and Double Bass (Bass). The notation is highly detailed, showing intricate melodic and rhythmic patterns for each instrument, with dynamic markings like *ff* and *mf*.

Hurtigere

Fl.
Ph.
Ob.
Ehen.
Kl.
Bkl.
Fg.

Horn.
Trpt.
Trb.
Tuba
Ph.
Slv.
Harp.

Hurtigere

Vln. 1
Vln. 2
Vcl.
Bass

Fl.
Pk.
Ob.
E.hrn.
Kl.
Bkl.
Fg

Musical score for woodwinds and strings. The woodwinds (Flute, Piccolo, Oboe, English Horn, Clarinet, Bass Clarinet, Bassoon) play melodic lines with various articulations and dynamics. The strings (Violin 1, Violin 2, Viola, Bass) provide harmonic support with sustained notes and rhythmic patterns. A large bracket groups the woodwinds and strings, indicating they play together.

Hrn.
Tpt.
Tbn.
Tuba

Musical score for brass instruments. The Horns, Trumpets, Trombones, and Tubas are mostly silent, indicated by vertical lines. A few notes are present in the Trumpet part, marked with a *p* dynamic.

Pk.
Slr.
Vib.

Musical score for Percussion. The Percussion part is mostly silent. The Snare Drum (Slr.) and Vibraphone (Vib.) have some notes, with the Vibraphone marked with a *p* dynamic.

Harp

Musical score for Harp. The Harp part features a rhythmic pattern of chords, marked with a *p* dynamic.

Vln. 1
Vln. 2
Vcl.
Bass

Musical score for strings. The Violin 1 and Violin 2 parts play melodic lines with various articulations and dynamics. The Viola and Bass parts provide harmonic support with sustained notes and rhythmic patterns. A large bracket groups the strings, indicating they play together.



Fl.
Ph.
Ob.
E. har.
Kl.
Bkl.
Fg.

1. st.

Hrn.
Sapt.
Bar.
Tuba

CON SORD. (mf)

Pk.
Slw.

Harp.

Ped. Gtr

Uln. 1
Uln. 2
Bat.
Vc.
Bass



50 Enda hurtigere

Fl. Fl.

Ph. Ph.

Ob. Ob.

E.hrn. E.hrn.

Kl. Kl.

Bkl. Bkl.

Fg. Fg.

Hrn. Hrns.

Inpt. Inpts.

Inb. Inbs.

Tuba Tuba

Ph. Ph.

Str. Str.

Harp. Harp.

Ped. D, C, H, E, F, G, A

50

Enda hurtigere

Vln. 1 Vln. 1

Vln. 2 Vln. 2

Bat. Bat.

Vc. Vc.

Bass Bass

Fl.
Pk.
Ob.
Ehörn.
Kl.
Bkl.
Fg.

Hörn.
Tapt.
Trb.
Tuba

Ph.
Stv.

xylophone
Tamburin
Stachisme
(Jethammer)

Harp.

Vln. 1
Vln. 2
Brt.
Vc.
Bass

Fl.
 Fl.
 Ob.
 E.han.
 Kl.
 Bkl.
 Fa.

This section of the score covers measures 1 through 5. It features complex rhythmic patterns for the woodwinds, including sixteenth and thirty-second notes. The strings provide a steady accompaniment with eighth-note patterns. The key signature changes from one flat to two flats between measures 3 and 4.

Hrn.
 Trpt.
 Tub.
 Tuba

This section covers measures 1 through 5 for the brass instruments. The horns and trumpets play melodic lines with some slurs, while the trombones and tubas provide harmonic support with sustained notes and rhythmic patterns.

Ph.
 Str.

This section covers measures 1 through 5 for the piano and string ensemble. The piano part features a complex, rhythmic accompaniment with many beamed notes. The string ensemble part consists of sustained chords and rhythmic patterns.

Flap.

This section covers measures 1 through 5 for the Flap instrument, which appears to be a harp. The notation shows a series of chords and arpeggiated figures.

Vln. 1
 Vln. 2
 Bst.
 Vc.
 Bam

This section covers measures 1 through 5 for the string instruments. The violins play melodic lines with slurs, while the viola, cello, and bass provide harmonic support with sustained notes and rhythmic patterns.

Fl.
Ph.
Ob.
E.hrn.
Kl.
Bkl.
Fg.

Hrn.
Tpt.
Trb.
Tuba
Pb.
Str.
Hrp.

Vln 1
Vln 2
Vcl.
Brt.
Bass

INB noter
This music is copyright protected

Fl.
 Pk.
 Ob.
 E.hrn.
 Kl.
 Bbl.
 Tg.

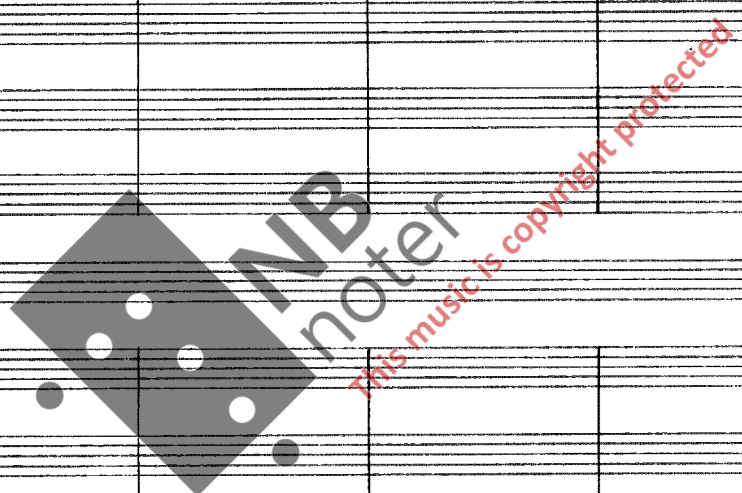
Hrn.
 Sept.
 Trb.
 Tuba

Pk.
 Str.

Trp.

Vln. 1
 Vln. 2
 Viol.
 Vc.
 Bass

CON. SORD.
 pp
 pp
 pp
 pp
 pp



Tempo primo

Fl. *pp*

Pk. *p*

Ob. *1. st.*

E. horn. *pp*

Kl. *pp*

Bcl. *pp*

Tr. *pp*

Hrn.

Sept.

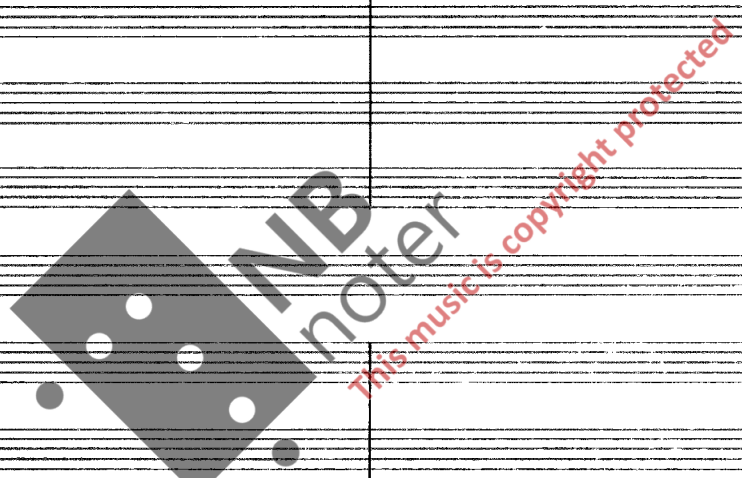
Trb.

Tuba

Pk.

Str.

Hrp. *5/4* Ped. D¹, C¹, H, E^b, F[#], G, A.



Tempo primo

Vln. 1

Vln. 2

Br. *CON SORD.*

Vc. *mf*

Bass *mf*

Ponticello

Fl. (H) (A4)

Fl. (H) (A4)

Ob.

E. hn.

Kl.

Bkl.

Fg.

Hrn.

Trpt.

Trbn.

Truba

Pk.

Slv.

Hrp.

CON SORD. 1. st.

Klokkespill

Ped. G#

Vln. 1

Vln. 2

Brn.

Vc.

Ban.

CON SORD. p123

SENZA SORD. COL LEGNO

modo and.

Fl.

Pk.

Ob.

E.han.

Kl.

Bkl.

Fg.

Flan.

Inpt.

Trb.

Tuba

Pk.

Slw.

Harp.

CON SORD

Flag.

CON AORB.

Flag.

Flag.

Flag.

secco

secco

secco

lilletromme

GONG

Ped. D#, C#, H, E, F#, G#, A.

Solo vln.

Vln. 1

Vln. 2

Viol.

Vc.

Bass

Fl.
Ph.
Ob.
E. horn.
Kl.
Bkl.
Fg.

mf

Hrn.
Tpt.
Trbr.
Tuba

CON SORD. 2nd.
CON SORD. 1st.
CON SORD. 2nd.
CON SORD. 1st.
CON SORD. 2nd.
CON SORD. 3rd.
CON SORD. 1st.
CON SORD. 2nd.

Ph.
Slo.

Lille romme
Sun. lekken (vibop)

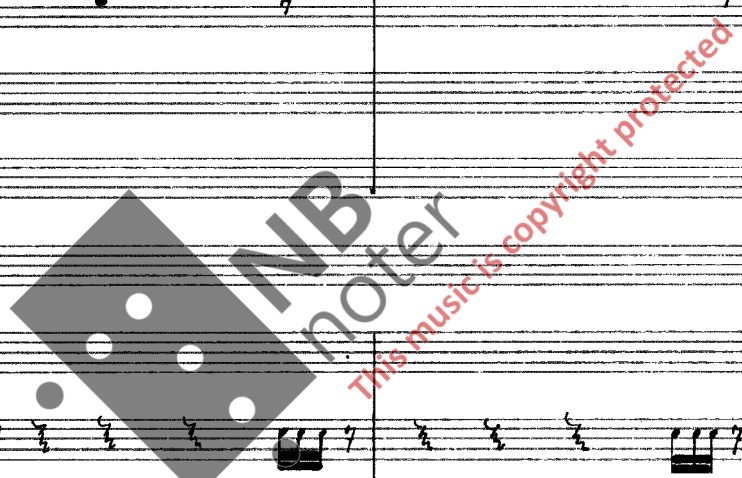
mf

Harp

mp

Vln. 1
Vln. 2
Vcl.
Bnt.
Bass

ARCO DIV.
espressivo
(Pizz.)
espressivo
(Pizz.)
(Pizz.)
(Pizz.)
(Pizz.)



This musical score page, numbered 22, features a variety of instruments. The woodwind section includes Flute (Fl.), Piccolo (Pk.), Oboe (Ob.), English Horn (E.hrn.), Clarinet (Cl.), Bassoon (Bkl.), and Bassoon (Bg.). The brass section consists of Horns (Hrn.), Trumpets (Trpt.), Trombones (Trb.), and Tubas (Tuba). The keyboard section includes Piano (Pk.) and Strings (Str.). The string section includes Violin 1 (Vln. 1), Violin 2 (Vln. 2), Viola (Vc.), Cello (Cello), and Bass (Bass). The score is written in a complex, multi-measure style with many accidentals and dynamic markings. A large watermark for 'NB noter' is visible across the center of the page, with the text 'This music is copyright protected' written diagonally below it. The page contains multiple systems of staves, with some instruments having multiple staves. The notation includes notes, rests, and various musical symbols.

110
Hurtigere

Fl.
Ph.
Ob.
Ehcn.
Kl.
Bhl.
Fg.
Hrn.
Dpt.
Trb.
Tuba
Pb.
Slr.
Hrp.

musical score for page 23, measures 1-5. Includes woodwinds (Flute, Piccolo, Oboe, Clarinet, Bassoon, Bass Clarinet), brass (Horn, Trumpet, Trombone, Tuba), strings (Violin, Viola, Bass), and percussion (Xylophone, Harp). The score features various dynamics such as *ff*, *mf*, and *unio.*, and includes performance instructions like *senza sord.* and *arco*. A large watermark is present across the page.

110
Hurtigere

Vln. 1
Vln. 2
Bst.
Vc.
Bass

musical score for page 23, measures 6-10. Includes string section (Violin 1, Violin 2, Bass, Viola, Bass). The score features various dynamics such as *ff*, *mf*, and *unio.*, and includes performance instructions like *arco* and *div.*. A large watermark is present across the page.

Fl.
 Ob.
 E.hrn.
 Kl.
 Bkl.
 Fg.

This section contains the musical notation for the woodwind and string instruments. The Flute (Fl.) part features a melodic line with various dynamics and articulations. The Oboe (Ob.) and English Horn (E.hrn.) parts provide harmonic support. The Clarinet (Kl.) and Bassoon (Bkl.) parts have more rhythmic and harmonic roles. The Bass (Fg.) part is in the bass clef, providing a low-frequency foundation. The notation includes notes, rests, slurs, and dynamic markings like *pp* and *mf*.

Hrn.
 Sapt.
 Sub.
 Tuba

This section contains the musical notation for Horns (Hrn.), Saxophones (Sapt.), Subcontrabass (Sub.), and Tubas (Tuba). The Horns part has a melodic line with *uniso.* markings. The Saxophones and Tubas parts provide harmonic support. The Subcontrabass part has a rhythmic line with triplets. The notation includes notes, rests, slurs, and dynamic markings like *pp* and *mf*.

Rk.
 Str.

This section contains the musical notation for Piano (Rk.) and String Ensemble (Str.). The Piano part has a rhythmic line with triplets and *mf* markings. The String Ensemble part has a harmonic line with *secco* markings. The notation includes notes, rests, slurs, and dynamic markings like *mf* and *secco*.

Harp.

This section contains the musical notation for Harp (Harp.). The Harp part has a harmonic line with *gliss.* and *Ped. F#, G#* markings. The notation includes notes, rests, slurs, and dynamic markings like *mf* and *secco*.

Uln.1
 Uln.2
 Bst.
 Vc.
 Bam.

This section contains the musical notation for Violin 1 (Uln.1), Violin 2 (Uln.2), Viola (Vc.), and Cello (Bam.). The Violin parts have melodic lines with *Sub. pp* markings. The Viola and Cello parts provide harmonic support. The notation includes notes, rests, slurs, and dynamic markings like *Sub. pp* and *mf*.

Fl.
Pk.
Ob.
Ehro.
Kl.
Bbl.
Fg.

Musical score for woodwinds and strings. The Flute, Piccolo, Oboe, English Horn, Clarinet, Bassoon, and Bass Drum parts are shown. The score includes various musical notations such as notes, rests, and dynamic markings like *f* and *ff*. There are also some handwritten annotations and a large watermark in the background.

Hrn.
Tupt.
Trb.
Tuba
Pk.
Slw.
Hrp.

Musical score for brass instruments and harp. The Horn, Trumpet, Trombone, Tuba, Piccolo, Snare Drum, and Harp parts are shown. The score includes various musical notations such as notes, rests, and dynamic markings like *f* and *ff*. There are also some handwritten annotations and a large watermark in the background.

Vln. 1
Vln. 2
Bnt.
Vc.
Bass.

Musical score for strings. The Violin 1, Violin 2, Bassoon, Violoncello, and Bass parts are shown. The score includes various musical notations such as notes, rests, and dynamic markings like *molto cresc.* and *arco*. There are also some handwritten annotations and a large watermark in the background.

Fl. *mf* *molto espansivo*

Pk. *mf* *staccato*

Ob. *mf* *staccato*

E.hrn. *mf* *staccato*

Kl. *mf* *staccato*

Bkl. *mf* *staccato*

Fg. *mf* *staccato*

Hrn. *unio.* *ff*

Trpt. *unio.* *ff* (CON SORD.) *unio.*

Trbn. *CON SORD.* *unio.* *f* *gliss.*

Tuba *CON SORD.* *unio.* *f* *gliss.*

Pk. *mf*

Slw. *mf* *Diangel*

Hrp. *mf*

Vln. 1 *PIZZ.* *mf* *arco*

Vln. 2 *PIZZ.* *mf* *arco*

Viol. *arco*

Vc. *arco*

Bass *arco*

Fl.
Pkl.
Ob.
E.horn.
Kl.
Bkl.
Fag.
Solo 1st.
ff
3
dimin.
mf
3
mf

Hrn.
Trpt.
Trb.
Tuba
senza sord.
senza sord.
senza sord.
senza sord.

Pk.
Slv.
Vibes (med motoren på)
(felthammer)
Startrømme
(felthammer)
p
mf
mf
mf
mf

Hrp.
3
8
2
4

Vln. 1
Vln. 2
Brn.
Vc.
Bass



Tempo primo

Fl. *mf espressivo*

Ph. *mf espressivo*

Ob. *mf espressivo*

E.hrn.

Fl.

Bkl.

Fg.

Hrn.

Sept.

Sob.

Tuba

Ph.

Str.

Hrp.

Tempo primo

Vln. 1 *mp*

Vln. 2 *mp*

Viol. *pp*

Vc. *pp*

Bass *pp*

cresc.

Hurtigere

Fl. *cresc.*

Pk. *cresc.*

Ob. *cresc.*

E.hrn.

Kl.

Bkl.

Fg.

Hrn.

Sept.

Tub.

Tuba

Dr.

Slw.

Hrp.

Dr.

Slw.

Hrp.

Hurtigere

Vln. 1

Vln. 2

Brat.

Vc.

Bass

Fl.
Ph.
Ob.
E.han.
Kl.
Bkl.
Fg.

Flas.
Trpt.
Trb.
Tuba

Ph.
Slr.

Harp.

Vln.1
Vln.2
Viol.
Vc.
Bass

Enda hurtigere

160

Fl.
Pk.
Ob.
E.hrn.
Kl.
Bkl.
Fg.

Musical score for woodwinds and strings. The woodwinds (Flute, Piccolo, Oboe, English Horn, Clarinet, Bass Clarinet, Bassoon) play a complex rhythmic pattern with various articulations and dynamics. The strings (Violins, Violas, Cellos, Double Basses) provide a steady accompaniment.

Hrn.
Tpt.
Ttr.
Tuba

Musical score for brass instruments. The Horns, Trumpets, Trombones, and Tubas play a rhythmic accompaniment with various articulations and dynamics. The Horns and Trumpets have 'unis.' markings.

Pk.
Slv.

Musical score for Percussion. The Percussion part includes Snare Drum, Cymbals, and Xylophone. The Xylophone part has 'Xylophone' and 'ff' markings.

Hrp.

Musical score for Harp. The Harp part includes 'Ped. C7, F7', 'Glin. Glin.', and 'Ped. C7, F7, G#'. The tempo is marked '160'.

Enda hurtigere

160

Vln.1
Vln.2
Vcl.
Bass

Musical score for strings. The Violin 1, Violin 2, Viola, and Double Bass parts play a rhythmic accompaniment with various articulations and dynamics. The Viola part has 'modo ad. div.' and 'modo ad.' markings.

Fl.

Ph.

Ob.

E.han.

Kl.

Bbl.

Fg.

Hrp.

Trpt.

Trb.

Tuba

Ph.

Skr.

Xylophone

Xylophone

lille tromme

Hrp.

Ped. D^b, C^b, B, E^b, F^b, G^b, A^b

2 3

4 8

Vln. 1

Vln. 2

Brn.

Vc.

Bass

Fl.
 Ph.
 Ob.
 E.hrn.
 Kl.
 Bkl.
 Fg.

This section contains the musical notation for the woodwind and lower string instruments. It includes parts for Flute (Fl.), Piccolo (Ph.), Oboe (Ob.), English Horn (E.hrn.), Clarinet (Kl.), Bass Clarinet (Bkl.), and Bassoon (Fg.). The notation features various musical symbols such as clefs, time signatures, and dynamic markings like *ff*.

Hrn.
 Sept.
 Sob.
 Tuba

This section contains the musical notation for the brass instruments: Horn (Hrn.), Trumpet (Sept.), Trombone (Sob.), and Tuba. The notation includes clefs, time signatures, and dynamic markings such as *ff*.

Ph.
 Slo.

This section contains the musical notation for Percussion (Ph.) and Snare Drum (Slo.). It includes time signatures (2/4, 3/8, 5/8) and specific instrument names: *Gong*, *Jammin (stikke)*, *Jylophone*, and *Storstemme*. Dynamic markings like *ff* are present.

Harp.

This section contains the musical notation for the Harp (Harp.). It includes time signatures (2/4, 3/8, 5/8) and dynamic markings like *ff*.

Uln. 1
 Uln. 2
 Bat.
 Vc.
 Bass

This section contains the musical notation for the string instruments: Violin 1 (Uln. 1), Violin 2 (Uln. 2), Viola (Bat.), Cello (Vc.), and Bass. The notation includes clefs, time signatures, and dynamic markings like *ff*. There are also markings for *div.* and *aria*.

Langsomt og fredelig

190

Fløyte 1+2
Fikkolo
Oboe 1+2
Engelsk horn
Klarnett + Esax
Klarnett i B 1+2
Bassklarinett i B
Fagott 1+2
Horn i F
2+4
Trompet
2+4
Trombone
1+2
3
Tuba
Trombe 2:0
Stagverk
Celeste
Harpe
Ped. D, C, B, E, F, G, A^b

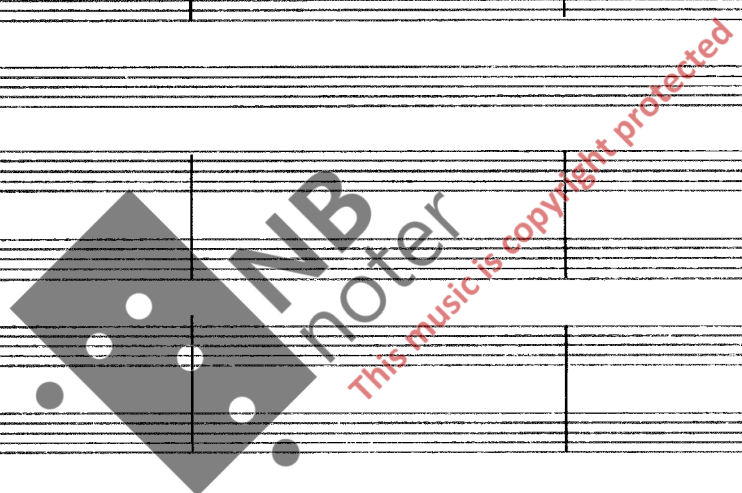
Langsomt og fredelig

190

Solo kvartett
(Denne kvartetten spilles av konsertmentene i de forskjellige grupper. Det er ikke nødvendig å bytte plasser mellom satsene.)
Violin 1
Violin 2
Bratsj
Cello
Bass

Fl.
 Ph.
 Ob.
 E.hrn.
 Kl. Ess
 Kl. B
 Bkl.
 Fg.
 Hrn.
 Trpt.
 Trbn.
 Tuba
 Pk.
 Str.
 Celeste
 Hrp.
 Vln. 1
 Vln. 2
 Bnt.
 Vc.

1st Solo
 mp
 Solo
 mp
 mf



1
 2
 Vln.
 Bnt.
 Vc.
 Bass

CON SORD.
 ???
 mf
 3

Fl.
 Ph.
 Ob.
 E. horn.
 Kl. Ess.
 Kl. B.
 Bkl.
 Fg.
 Hrn.
 Trpt.
 Trbn.
 Tuba
 Ph.
 Str.
 Celeste
 Hrp.

Uln. 1
 Uln. 2
 Brit.
 Vc.
 1
 Uln.
 2
 Brit.
 Vc.
 Bass

senza vib.
 senza vib.
 senza vib.
 senza vib.

molto espress.
 molto espress.
 molto espress.
 molto espress.

Fl. 1st. *mf* *f*

Ph.

Ob.

E.han.

Kl. Ess

Kl. B

Bkl.

Fg.

Hrn.

Trpt.

Trb.

Tuba

Ph.

Slr.

Celente

Hrp.

Lillebrømme *mf*

Vln. 1

Vln. 2

Brst.

Vc.

1 *p*

2 *p*

Brst.

Vc.

Bass

FL. 1st. *f* *mf*

Pk. *f* *mf*

Ob. *f* *mf*

E. horn.

Kl. Ess. *f*

Kl. B.

Bkl.

Fg.

Trpt.

Trb.

Tuba

Pk. *mf*

Slv.

Celeste

Ped.

Flap.

Ped. C#

Vln. 1

Vln. 2

Bst.

Vc.

Vln. 1

Vln. 2

Bst.

Vc.

Ban.

Fl. *1st.*

Pk.

Ob.

E. horn.

Cl. Ess.

Cl. B.

Bbl.

Fg.

Horn.

Trpt.

Trbn.

Tuba

Pk.

Str.

Celeste

Harp.

220

Vln. 1

Vln. 2

Viol.

Vc.

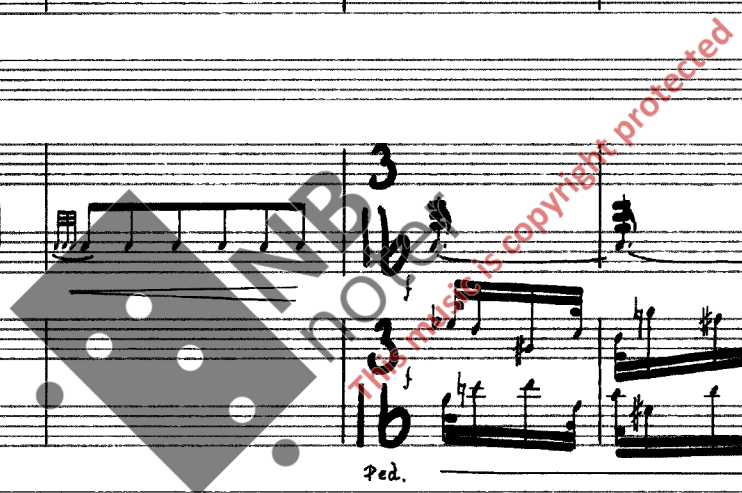
Vln. 1

Vln. 2

Viol.

Vc.

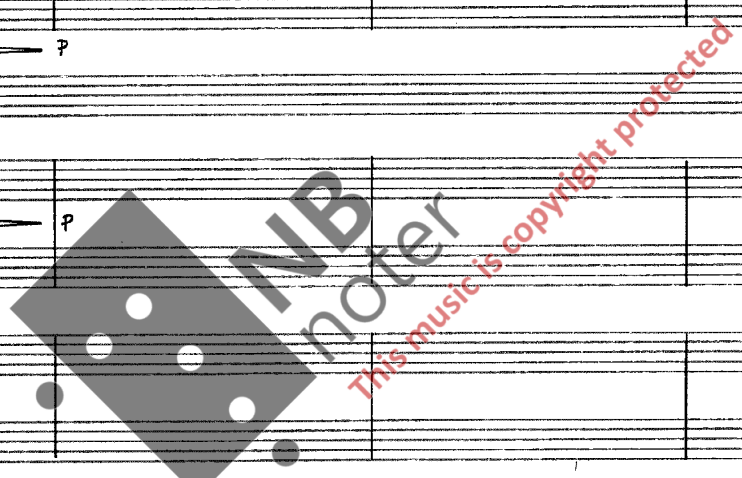
Bar.



Fl.
 Pk.
 Ob.
 E.hrn.
 Kl. Ess
 Kl. B
 Bbl.
 Fg.
 Horn
 Trpt.
 Trbn.
 Tuba
 Pk.
 Str.
 Celeste.
 Hrp.
 Vln. 1
 Vln. 2
 Vcl.
 Vc.
 Bass

arco
 div.
 pp
 p
 ff

unio.



Fl. 1st. p

Ph.

Ob.

E. horn.

Kl. Ess.

Kl. B.

Bkl.

Fg.

Hrn.

Bapt.

Treb.

Tuba

Ph.

Str.

Celeste

Harp.

230

Vln. 1 pp espress.

Vln. 2 pp espress.

Bst. pp espress.

Vc. pp espress.

Vln. 1 unio. p (Bocca chiusa)

Vln. 2 unio. p (Bocca chiusa)

Bst. div. p (Bocca chiusa)

Vc. div. p (Bocca chiusa)

Bass p (Bocca chiusa)

* Hver enkel member må synge samme tonen som de spilte tidligere med lukket mund.

Fl.
Pk.
Ob.
E. horn.
Kl. Ess.
Kl. B.
Bbl.
Fg.

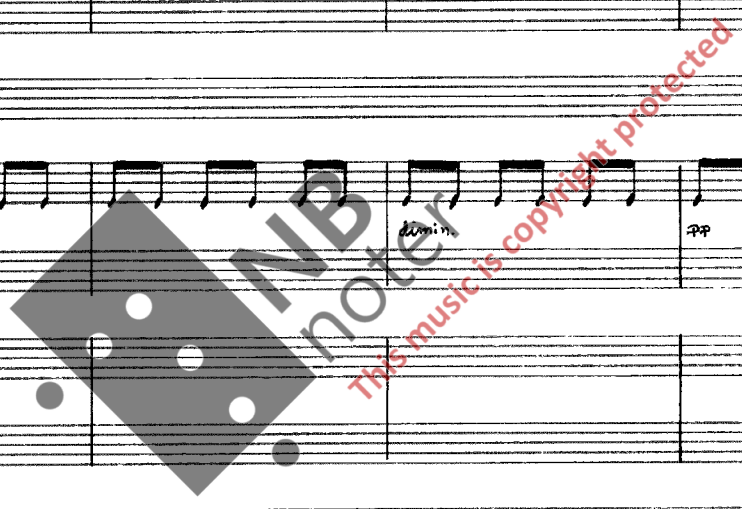
Hrn.
Trpt.
Tbn.
Tuba

Pk.
Slo.
Celeste

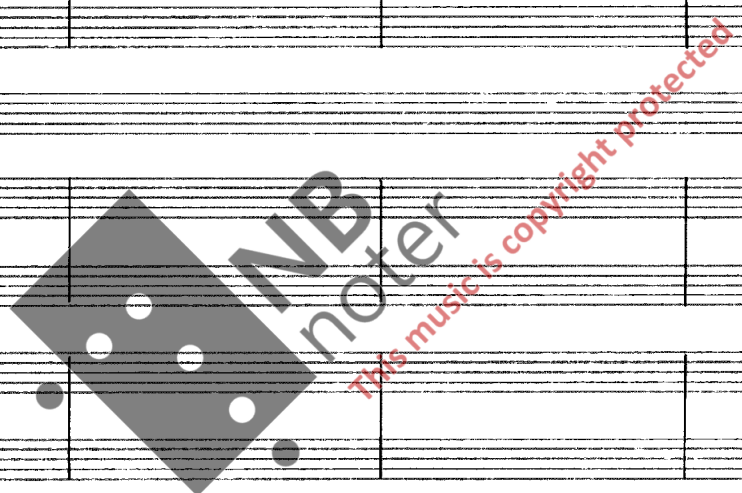
Hrp.

Vln. 1
Vln. 2
Brt.
Vc.

Vln. 1
Vln. 2
Brt.
Vc.
Bass



Fl.
Pk.
Ob.
E.han.
Kl. Ess.
Kl. B.
Bkl.
Fg.
Hrn.
Trpt.
Trbr.
Tuba
Pk.
Slr.
Celeste
Hrp.



250

Vln. 1
Vln. 2
Vcl.
Bst.
Vln. 1
Vln. 2
Vcl.
Bst.
Bass

f *cresc.* *div.*

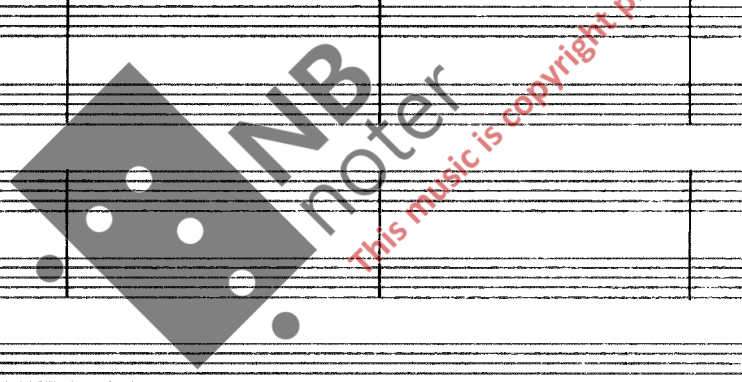
Fl.
Phe.
Ob.
E. horn.
Kl. Ess.
Kl. B.
Bkl.
Fg.

Hrn.
Dpt.
Trb.
Tuba

Pk.
Shr.
Celeste
Flp.

Vln. 1
Vln. 2
Brt.
Vc.

Vln. 1
Vln. 2
Brt.
Vc.
Bass



1st. Solo
espressivo
mp

Fl.

Pk.

Ob.

E. horn.

Cl. Ess.

Cl. B.

Bbl.

Fg.

Horn.

4th. con sord.

Trpt.

Trbn.

Tuba

Pk.

Str.

Celeste

Hrp.

Ped. D^b, C^b, F^b

Vln. 1

Vln. 2

Viol.

Vc.

Bass

Handwritten musical score for a symphony orchestra. The score is arranged in systems, with instruments listed on the left side of each system. The instruments include:

- Fl. (Flute)
- Ph. (Piccolo)
- Ob. (Oboe)
- E. horn. (English Horn)
- Kl. Ess. (Clarinet in E-flat)
- Kl. B. (Clarinet in B-flat)
- Bkl. (Bass Clarinet)
- Fag. (Bassoon)
- Hrn. (Horn) - marked with (4th)
- Trpt. (Trumpet)
- Trbt. (Trumpet) - marked with 1st
- Tuba
- Ph. (Phonograph)
- Str. (String) - marked with Vibes. (Motozen på)
- Celente (Celeste)
- Hrp. (Harp)
- Uln. 1 (Violin 1)
- Uln. 2 (Violin 2)
- Bst. (Viola)
- Vc. (Violoncello)
- Uln. 1 (Violin 1) - marked with 1
- Uln. 2 (Violin 2) - marked with 2
- Bst. (Viola)
- Vc. (Violoncello)
- Bas. (Bass)

The score contains various musical notations, including notes, rests, and dynamic markings such as *ppp*, *pp*, and *p*. There are also performance instructions like "1st. solo" and "Vibes. (Motozen på)". A large watermark "NB noter" and "This music is copyright protected" is overlaid on the score.

Fl.

Pk.

Obr.

E.hrn.

Kl. Ess

Kl. B

Bkl.

Fg.

Hrn

Trpt.

Trb.

Suba

Ph.

Slo.

Celeste

Hrp.

1st. solo

lillezomme

This music is copyright protected

Vln. 1

Vln. 2

Brt.

Vc.

1

2

Brt.

Vc.

Ban

Solo

mp

arco

arco

arco

arco

Fl.
Pk.
Ob.
E.hrn.
Kl. Ess
Kl. B
Bkl.
Fg.
Hrn.
Trpt.
Trb.
Tuba
Ph.
Slr.
Celeste
Trp.
Vln. 1
Vln. 2
Brd.
Vc.
Vln. 1
Vln. 2
Brd.
Vc.
Bass

This page contains a musical score for page 52. The score is arranged in a standard orchestral format with multiple staves. The instruments listed on the left are: Flute (Fl.), Piccolo (Pk.), Oboe (Ob.), English Horn (E.hrn.), Clarinet in E-flat (Kl. Ess), Clarinet in B-flat (Kl. B), Bassoon (Bkl.), Bassoon in F (Fg.), Horns (Hrn.), Trumpets (Trpt.), Trombones (Trb.), Tuba, Percussion (Ph.), Snare Drum (Slr.), Celeste, and Tom Tom (Trp.). The score is divided into two main sections. The first section, from the beginning to the end of the Vln. 1, Vln. 2, Brd., and Vc. staves, contains handwritten musical notation with various dynamics such as *pp*, *f*, and *sub. pp*, and includes triplets. The second section, starting from the Vln. 1 and Vln. 2 staves, contains printed musical notation with notes and rests. A large watermark 'NB noter' is overlaid on the page, along with the text 'This music is copyright protected'.

Fl.
Pk.
Ob.
E.kon.
Kl. Ess.
Kl. B.
Bkl.
Fg.
Hrn.
Sapl.
Tub.
Tuba
Pkl.
Skl.
Celeste
Hrp.

This system of musical notation covers measures 290, 291, and 292. It includes staves for Flute, Piccolo, Oboe, English Horn, Clarinet in E-flat, Clarinet in B-flat, Bassoon, Horns, Saxophone Alto, Trombone, Trombone/Tuba, Trumpet, Trumpet/Saxophone Soprano, Celeste, and Harp. The woodwinds and strings have melodic lines, while the brass instruments play sustained chords. Dynamics include *mp* (mezzo-piano) and *fz* (forzando). A large watermark for 'INB noter' is overlaid on the score.

Vln. 1
Vln. 2
Vcl.
Bnt.
Vcl.
Bam

This system of musical notation covers measures 290, 291, and 292. It includes staves for Violin 1, Violin 2, Violoncello, Bassoon, Violoncello, and Bass. The strings play sustained chords, while the woodwinds have melodic lines. Dynamics include *fz* (forzando) and *pp* (pianissimo). The system concludes with a double bar line and repeat signs.

Sløjfe 1+2
 Pibekøle
 Oboe 1+2
 Engelsk horn
 Klarinet i Es
 Klarinet i B 1+2
 Bassklarinett i B
 Fagott 1+2
 Horn i F
 1+3
 2+4
 Trompet i B
 1+2
 3+4
 Trombone
 3
 Tuba
 Pauke 2 oboer
 Slagværk
 Celeste
 Harpe
 Ped. a, c, H, E, F, G, B^b

CON SORD.
 CON SORD.
 CON SORD.

pp
 pp
 pp

Violin 1
 Violin 2
 Bratsy
 Cello
 Bass

pp
 pp

1st

Fl.

Pk.

Ob.

E.han.

Kl. Ess

Kl. B

Bkl.

Fg.

Hrn.

Opnt.

Tub.

Tuba

Pk.

Slv.

Celeste

Hrp.

ppp

senza rond.

senza rond.

Xylophone

Balken

ppp

1

2

1

2

Vc.

Ban.

ppp

Fl. *pp*

Fl. *pp*

Ob. *pp*

E.hrn.

Kl. Ess *pp*

Kl. B *pp*

Bkl.

Fg.

Hrn.

Trpt.

Trb.

Tuba

Pk.

Slv. *pp*

Celeste *pp*

Jhp. *f*

1st. And. p

Triangel p

Ped.

Ped. D^b, C^b, H, E^b, F^b, G^b, A

Vln. 1

Vln. 2

Viol.

Vc.

Bar.

Fl. *p* *1. st.*

Fl.

Ob.

E. horn.

Cl. Ess.

Cl. B.

Bbl.

Fg.

Hrn.

Trpt.

Trb.

Tuba

CON SORD.

CON SORD.

Ph.

Str.

Celeste

Thp.

Uln. 1

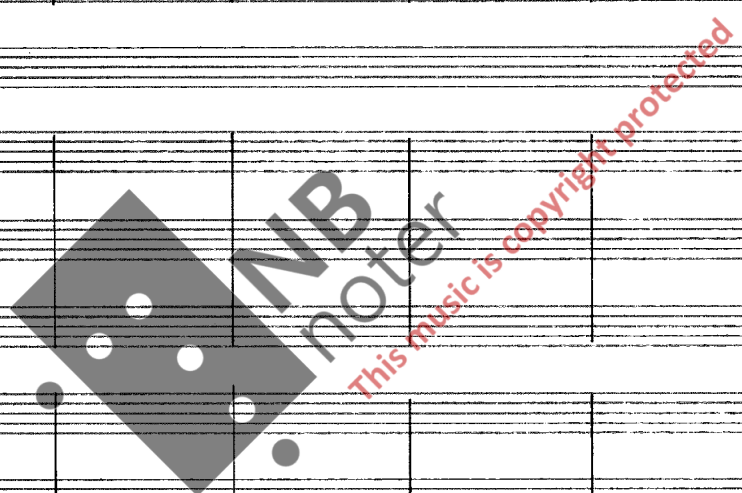
Uln. 2

Brt.

Vc.

Ban.

Solo



Fl. *unio* *mf* *f* *cresc.*

Ph.

Ob. *unio* *f* *cresc.*

E. horn.

Kl. Ess.

Kl. B. *2nd.* *1st.* *unio* *f* *cresc.*

Bkl. *f* *cresc.*

Bg.

Hrn.

Trpt. *senza cord.*

Trpt. *senza cord.*

Trb.

Tuba

Ph.

Str.

Celente

Trp.



Vln. 1 *cresc. poco a poco*

Vln. 2 *cresc. poco a poco*

Br. *cresc. poco a poco*

Vc.

Bass

Fl.
 Ph.
 Ob.
 E. horn.
 Kl. & ss
 Kl. B
 Bkl.
 Fg.

Hrn.
 Trpt.
 Trb.
 Tuba

Ph.
 Slo.
 Celeste
 Trp.

Vln. 1
 Vln. 2
 Viol.
 Vc
 Bass

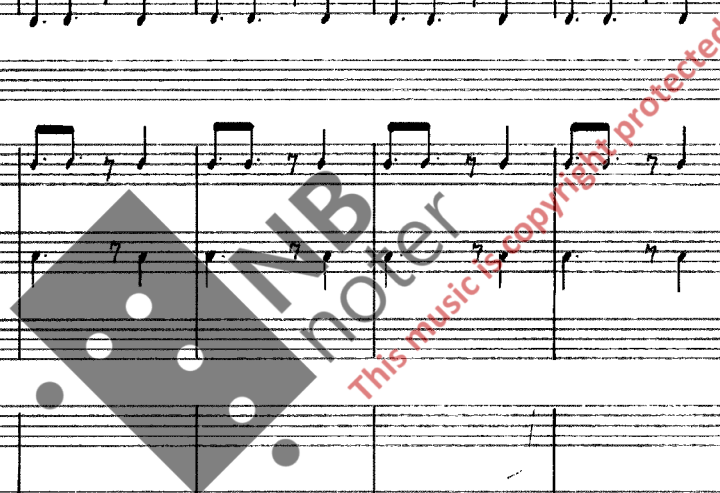
Fl.
Ph.
Ob.
E. hn.
Kl. Ess.
Kl. B.
Bkl.
Fg.
Hrn.
Sapt.
Trb.
Tuba
Pk.
Sbr.
Celeste
Slap.

1
2
Vln.
Vcl.
Bari.
Bass

Fl.
Ph.
Ob.
E. horn.
Kl. Ess.
Kl. B.
Bkl.
Fg.
Hrn.
Tpt.
Trb.
Tuba

Ph.
Str.
Celeste
Hrp.

1. Vln.
2. Vln.
Viol.
Vc.
Bass



Fl.

Pk.

Ob.

E. horn.

Kl. Ess.

Kl. B.

Bcl.

Sg.

Hrn.

Trpt.

Trbn.

Tuba

1st.

Solo 1st.

mp

p

Sub. pp

pp

Sub. pp

Sub. pp

Pk.

Slv.

Celsta

Hrp.

Starteommt

pp

mp

pp

Ped.

1

2

Uln.

Bst.

Vc.

Ban.

Sub. pp

Sub. pp

Fl. 1st

Fl.

Ob.

E. horn.

Kl. Ess.

Kl. B.

Bbl.

Fg.

Hrn.

Sopr.

Sub.

Tuba

Bk.

Str.

Celeste

Xylophone

Trp.

Vln 1

Vln 2

Viol.

Vc

Bass

espressivo

Soli

mp espress.

espressivo

espressivo

Fl.
 Ph.
 Ob.
 E. horn.
 Kl. Ess.
 Kl. B.
 Bkl.
 Ba.

Horn.
 Trpt.
 Trb.
 Tuba

Ph.
 Str.
 Celeste

Hrp.

Vln. 1
 Vln. 2
 Viol. 1
 Viol. 2
 Vc.
 Bass



Fl.
Ph.
Ob.
E. horn.
Horn. E. & B.
Bkl.
Fg.

Hrn.
Sopr.
Tuba.
Tuba.

Ph.
Skr.
Celeste
Timp.

1. Vln.
2. Vln.
Vcl.
Bass

Fl.

Ph.

Ob.

E. horn.

Kl. Ess.

Kl. B.

Bkl.

Fag.

Hrn.

Trpt.

Trb.

Suba.

Ph.

Slv.

Celeste

Trp.

1. Vln.

2. Vln.

Brn.

Vc.

Bass



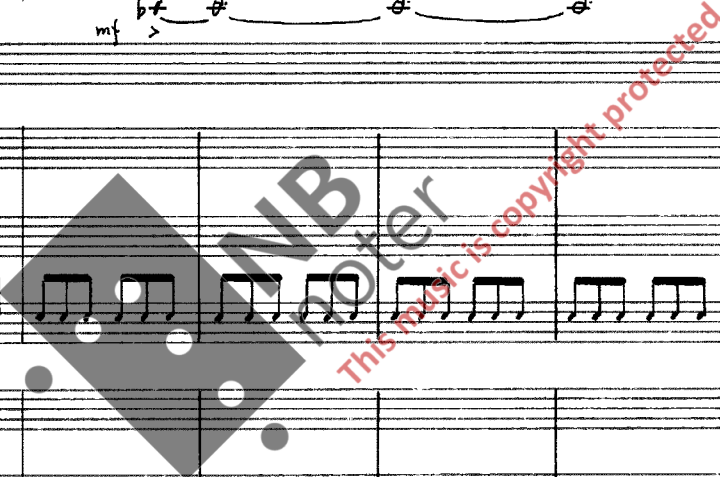
Fl.
 Pk.
 Obo.
 E. horn.
 Kl. Ess.
 Kl. B.
 Bkl.
 Fa.

Kor.
 Bpt.
 Tpt.
 Tuba

Pk.
 Str.
 Celeste

Hrp.

Vln 1
 Vln 2
 Vcl.
 Bass



Fl.
Ph.
Ob.
E.han.
Kl. Ess.
Kl. B.
Bbl.
Fg.
Hrn.
Trpt.
Tbn.
Tuba

muso. ff
dimin.
pp
pp
pp
pp
pp
pp
pp
pp
pp

Ph.
Slo.
Celeste

Xylophone
Ped.
GONG (felthamma)
pp

Uln.
Bnt.
Vc.
Bam

ppp
ppp
ppp
ppp

Fl.
Pk.
Ob.
E. har.
Kl. Ess
Kl. B
Bkl.
Fg.
Hrn.
Sept.
Sob.
Tuba

Pk.
Str.
Celeste

Hrp.

Vln.
Bst.
Vc.
Bsn

Tutti archi sempre cresc.

Fl.
Pk.
Ob.
E. horn.
Xl. Ess.
Xl. B.
Bbl.
Tg.
Hrn.
Trpt.
Trb.
Tuba
Pk.
Slo.
Celeste
Hrp.

This system contains the first 14 staves of the score. The instruments listed on the left are Flute (Fl.), Piccolo (Pk.), Oboe (Ob.), English Horn (E. horn.), Euphonium (Xl. Ess.), Trombone (Xl. B.), Baritone (Bbl.), Bassoon (Tg.), Horn (Hrn.), Trumpet (Trpt.), Trombone (Trb.), Tuba, Percussion (Pk.), Snare Drum (Slo.), Celeste, and Harp (Hrp.). The harp part includes pedal markings: Ped. C, Ped. C#, and Ped. F#.



1
Vln.
2
Vcl.
Bass

This system contains the last four staves of the score, for the string section: Violin 1 (Vln. 1), Violin 2 (Vln. 2), Violoncello (Vcl.), and Bass. The notation shows harmonic support for the rest of the ensemble.

Fl.
Pk.
Ob.
E.han.
Kl. Ess.
Kl. B.
Bkl.
Fa.
Hrn.
Trpt.
Trb.
Tuba
Pk.
Slr.
Celeste
Thp.
Solo vln.
1
Vln.
2
Vcl.
Bst.
Bass

Handwritten musical score for a symphony orchestra. The score includes parts for woodwinds (Flute, Piccolo, Oboe, Clarinet in E-flat, Clarinet in B-flat, Bassoon, Bassoon in C), brass (Trumpet, Trombone, Tuba, Percussion, Snare Drum, Cymbals), strings (Violin 1, Violin 2, Viola, Violoncello, Double Bass), and Solo Violin. The score is written in a single system with multiple staves. The Solo Violin part is marked "CON SORD." and "PIZZ." in several places. The woodwind and string parts have various dynamics and articulations. A large watermark "NB noter" is visible across the middle of the page, with the text "This music is copyright protected" written diagonally below it.

Fl.

Pk.

Obr.

E. horn.

Kl. Ess

Kl. B

Bkl.

Fag.

Horn.

Trpt.

Trb.

Tuba

Pk.

Skr.

Calente

Flap

* Denne delen av den tredje satsen skal fremføres meget fritt, lik en kadense. Noteverdierne er kun veiledene. Hver side varer omkring 20 sekunder.

Solo vln.

1 Vln

2 Vln

Bst.

Vc.

Bass



Fl. *p* 1st. *molto cresc.*

Ob. *p* *molto cresc.*

E. horn *p* *molto cresc.*

Kl. Ess *p* *molto cresc.*

Kl. B *p* *molto cresc.*

Bkl. *p* *molto cresc.*

Fg. *p* *molto cresc.*

Flan.

Trpt.

Tub.

Tuba

Pk.

Str.

Celste

Harp.

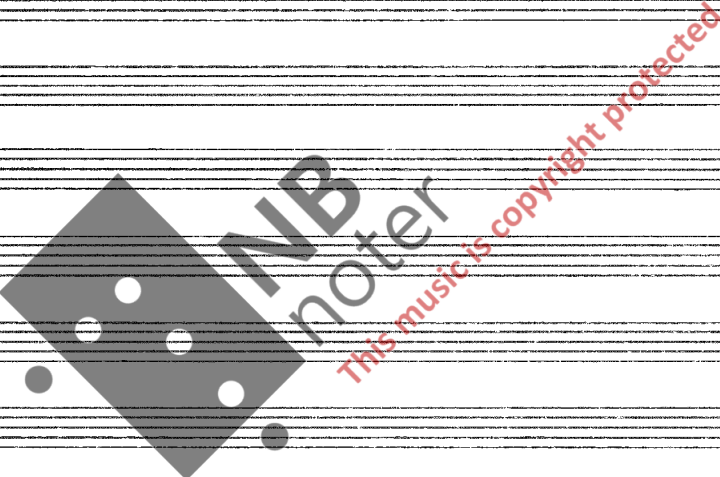
Vln. 1 *modo ard.*

Vln. 2 *modo ard.*

Bnt. *div. senza vib.*

Vc. *div. senza vib.*

Ban



Fl.

Pk.

Ob.

E. har.

Kl. Ess

Kl. B

Bkl.

Fg.

Hrn.

Trpt.

Trbn.

Suba.

Pk.

Str.

Celeste

Hrp.

Vln. 1

Vln. 2

Brt.

Vi.

Ban.

CON SORD.

(CON SORD.)

(CON SORD.)

(CON SORD.)

mf

mf

mf

ca. 20 sek.



Fl. *unis.* *ff*

Pk. *ff*

Ob.

E. har.

Kl. Ess

Kl. B

Bkl.

Fg.

Hrn. *unis.* *fff* (Schallstuckene opp) *ff*

Sept.

Trb.

Tuba

Pk. *fff*

Slv. *Xylophone* *ff*

Celente

Hrp.

Vln. 1

Vln. 2

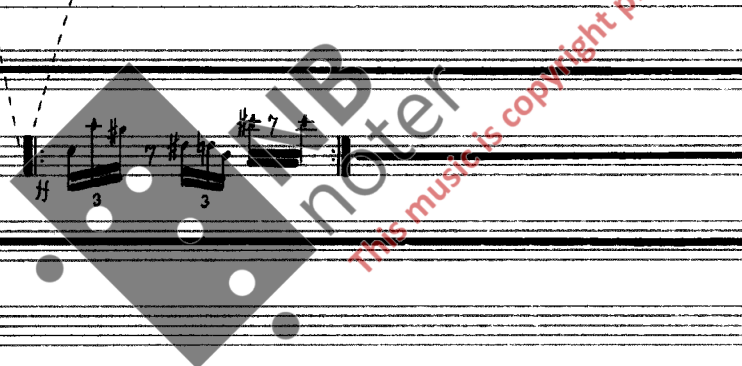
Bst.

Vc.

Bass

ca. 20 sek.

Tutti Secco



Fullpart 27. maa, 1976.