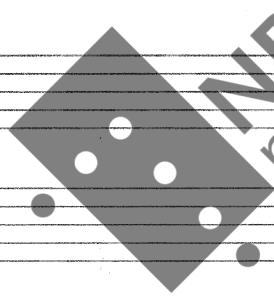
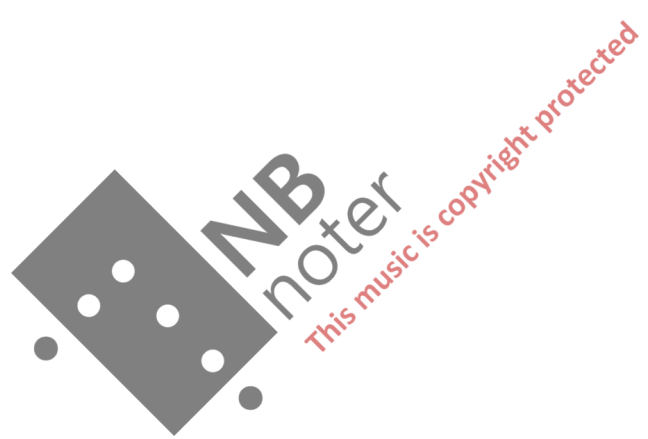


Tib  
Gutham Ghlebak

Sonatine  
for organ  
or  
Svein Møhlum



This music is copyright protected



$\text{♩} = 208$

Handwritten musical notation for the first system, featuring treble and bass clefs, a key signature of two flats, and a 4/4 time signature. The music includes eighth and sixteenth notes with various accidentals.

Handwritten musical notation for the second system, continuing the piece with treble and bass clefs, two flats key signature, and 4/4 time signature.

Handwritten musical notation for the third system, showing treble and bass clefs, two flats key signature, and 4/4 time signature.

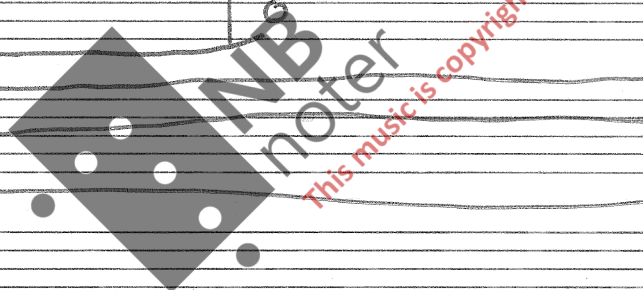
Handwritten musical notation for the fourth system, featuring treble and bass clefs, two flats key signature, and 4/4 time signature.

Handwritten musical notation for the fifth system, including treble and bass clefs, two flats key signature, and 4/4 time signature.

Handwritten musical notation for the sixth system, showing treble and bass clefs, two flats key signature, and 4/4 time signature.

Handwritten musical notation for the seventh system, featuring treble and bass clefs, two flats key signature, and 4/4 time signature.

Handwritten musical notation for the eighth system, including treble and bass clefs, two flats key signature, and 4/4 time signature.



Handwritten musical notation for the first system. It consists of three staves: a treble clef staff at the top, and two bass clef staves below it. The key signature has two flats (B-flat and E-flat). The first staff contains a melodic line with eighth and quarter notes, including a sharp sign on a note. The second staff contains a bass line with quarter notes. The third staff contains a single whole note. A vertical bar line is present in the middle of the system.

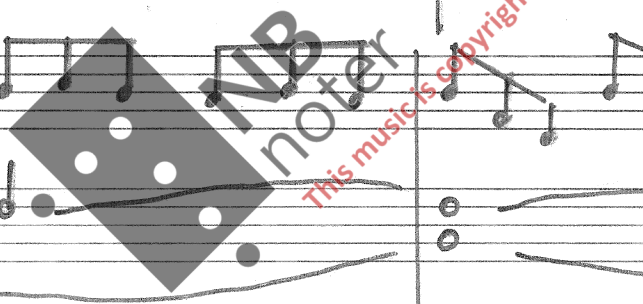
Handwritten musical notation for the second system. It consists of three staves: a treble clef staff at the top, and two bass clef staves below it. The key signature has two flats. The first staff contains a melodic line with quarter notes and a sharp sign. The second staff contains a bass line with eighth notes. The third staff contains a single whole note. A vertical bar line is present in the middle of the system.

Handwritten musical notation for the third system. It consists of three staves: a treble clef staff at the top, and two bass clef staves below it. The key signature has two flats. The first staff contains a melodic line with quarter notes. The second staff contains a bass line with eighth notes. The third staff contains a single whole note. A vertical bar line is present in the middle of the system.

Handwritten musical notation for the fourth system. It consists of three staves: a treble clef staff at the top, and two bass clef staves below it. The key signature has two flats. The first staff contains a melodic line with quarter notes. The second staff contains a bass line with quarter notes. The third staff contains a single whole note. A vertical bar line is present in the middle of the system.

Handwritten musical notation for the fifth system. It consists of three staves: a treble clef staff at the top, and two bass clef staves below it. The key signature has two flats. The first staff contains a melodic line with eighth notes. The second staff contains a bass line with quarter notes. The third staff contains a single whole note. A vertical bar line is present in the middle of the system.

Handwritten musical notation for the sixth system. It consists of three staves: a treble clef staff at the top, and two bass clef staves below it. The key signature has two flats. The first staff contains a melodic line with quarter notes. The second staff contains a bass line with quarter notes. The third staff contains a single whole note. A vertical bar line is present in the middle of the system.



Handwritten musical score for piano, consisting of six systems of three staves each. The music is in 4/4 time and begins with a treble clef and a key signature of one flat (B-flat). The first system includes a tempo marking of quarter note = 84 and a dynamic marking of *p*. The score features a variety of rhythmic patterns, including eighth and sixteenth notes, and rests. The bass line is characterized by long, flowing lines with many ties. A watermark for 'NB noter' is visible in the center, with the text 'This music is copyright protected' written diagonally across it.

The image displays a handwritten musical score for a multi-instrument ensemble, likely a string quartet or similar. The score is organized into systems, each containing two staves (treble and bass clef). The notation includes various musical elements:

- System 1:** Features complex chordal textures in the upper staves and a melodic line in the lower staff.
- System 2:** Shows a continuation of the melodic line in the lower staff, with some rests in the upper staves.
- System 3:** The upper staves are mostly empty, while the lower staff continues the melodic development.
- System 4:** The lower staff continues with a more active melodic line, while the upper staves have rests.
- System 5:** The upper staves contain long, wavy lines, possibly representing sustained chords or textures, while the lower staff continues its melodic line.
- System 6:** Similar to System 5, with wavy lines in the upper staves and a melodic line in the lower staff.
- System 7:** The upper staves have rests, and the lower staff continues with a melodic line.
- System 8:** The upper staves have rests, and the lower staff continues with a melodic line.
- System 9:** The upper staves have rests, and the lower staff continues with a melodic line.
- System 10:** The upper staves have rests, and the lower staff continues with a melodic line.

IMB  
noter  
This music is copyright protected

♩ = 152

Handwritten musical notation for the first system. It consists of three staves: a treble clef staff and two bass clef staves. The treble staff contains a series of eighth notes. The first bass staff has rests followed by a melodic line. The second bass staff has a whole rest.

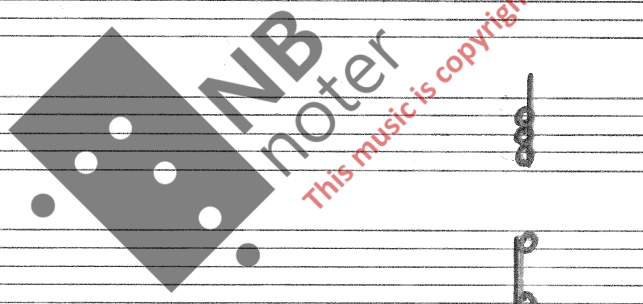
Handwritten musical notation for the second system. It consists of three staves: a treble clef staff and two bass clef staves. The treble staff contains a series of eighth notes. The first bass staff has rests followed by a melodic line. The second bass staff has a whole rest.

Handwritten musical notation for the third system. It consists of three staves: a treble clef staff and two bass clef staves. The treble staff contains a series of eighth notes. The first bass staff has rests followed by a melodic line. The second bass staff has a whole rest.

Handwritten musical notation for the fourth system. It consists of three staves: a treble clef staff and two bass clef staves. The treble staff contains a series of eighth notes. The first bass staff has rests followed by a melodic line. The second bass staff has a whole rest.

Handwritten musical notation for the fifth system. It consists of three staves: a treble clef staff and two bass clef staves. The treble staff contains a series of eighth notes. The first bass staff has rests followed by a melodic line. The second bass staff has a whole rest.

Handwritten musical notation for the sixth system. It consists of three staves: a treble clef staff and two bass clef staves. The treble staff contains a series of eighth notes. The first bass staff has rests followed by a melodic line. The second bass staff has a whole rest.



Handwritten musical score for guitar, consisting of 12 systems of staves. Each system includes a treble clef staff and one or two bass clef staves. The music is written in 3/4 and 6/4 time signatures with a key signature of one flat. It features various chord voicings, melodic lines, and dynamic markings such as 'p.' and 'pp.'. A large watermark 'MB noter' and the text 'This music is copyright protected' are overlaid on the middle section of the page.