

Knut Vaage:

# Vintersong

## *Winter Song*

VERSION 2

For countertenor and ensemble

text:

Hanne Bramness

Gendikta til engelsk av Hanne Bramness og Lars Amund Vaage  
*Translated from Norwegian by Hanne Bramness and Lars Amund Vaage*

*Version 2 is dedicated to Daniel Sæther*

2020

version of 25th of February 2021

Første versjon av *Vintersong* blei bestilt av Hardanger Musikkfest ved Alf Magnus Reigstad, Therese Birkelund Ulvo og Tora Augestad. Stykket ble urframført på festivalen i 2017 av Tora Augestad og Latten Compagny. Komponeringen ble finansiert av Norsk kulturråd. Takk til Hans Knut Sveen, Njål Vindenes og Thor-Harald Johnsen for verdfull informasjon om cembalo, barokkgitar, lutt og theorbo. Takk til Hanne og Lars Amund for raus tilrettelegging av engelsk tekst til partituret.

Versjon 2 er laga på initiativ fra Daniel Sæther, og tilpassa Ensemble Freithoff. Vokalstemma er justert for å fungera for kontratenor, og mindre endringar er gjort for ensemblet. Av praktiske grunnar er oboen bytta til traverso. (Det er framleis mogleg å framføra den nye versjonen med obo.) Versjon 2 skulle ha blitt urframført på konsert 25.03.2020 i Kampen Kirke, Oslo, men blei utsett pga koronarestriksjonane. Daniel og ensemblet gjorde ei 3D filminnspeling av stykket 10. januar 2021 med filmteamet Montag. Deretter CD innspeling for plateselskapet LAWO Classics i Sofienberg kirke 20. januar 2021, begge dirigert av Kai Grinde Myrann.

*ABOUT THE NOTATION OF THE SCORE:*

*Tuning pitch 415.*

*Accidentals apply through the whole bar within the same octave.*

*The tremolos are unmeasured if not marked.*

*DURATION:*

*Approximate 23 min.*

Royalties protected by TONO, P.b. 9171, Grønland, N-0134 OSLO, [tono@tono.no](mailto:tono@tono.no)

Score and parts at National Library of Norway,

P.Box 2674 Solli, N-0203 OSLO, [noter@nb.no](mailto:noter@nb.no)

More info: [www.knutvaage.com](http://www.knutvaage.com)

Tittelen *Vintersong* kjem frå boka dikta er henta frå. Poeten Hanne Bramness skriv vakkert om vinterlandskap, nesten som ei samling akvarellar eg gjenkjenner frå egne vandringar i barndommen i dei same skogane i Kvinnherad.

**Winter Song score text**

Desember kjem så stilt med blått lys over lilla fjord

*December breaks so still with blue light over purple fjord*

Niser sym forbi langt ute. Du kan høyre andedraga no.

*Porpoises swimming by so far out You can listen to their breathing now*

Bleike stjerner i dei blanke bøljene, speglar seg i lag med ein mager vintermåne til langt på dag.

*Fading stars in the shiny sea gazing at the waves with a skinny winter moon till tide at noon*

Skogmusa göymt i mosen ligg og skjelv. Kjenner draget i lufta lenge før snøen fell.

*Woodland mouse hid in the heatherlies trembling feeling a draft in the air long before snowflakes fall*

Vinden byrjar som ein speditone inne i det hule beinet i ein fugleveng.

*The wind starts off as a frail singing deep inside the hollow structure of a bird's wing*

I steinura, i den bratte, blå veggen med tjukke og tynne isjuklar, spelar vinden som på orgelpiper.

*O Stonewall blue in the slanting with sturdy and slender icicles the wind playing as on organpipes*

Vindtonar trengjer gjennom veggen set svingingane i gang i glaset med vatn.

*Wind music pushing through the wall the swingig starting off in a glass of water*

Kan du flyge så fort at du når deg sjølv igjen?

*Can you fly so fast that you catch up with yourself*

Du lettar når du kjenner blikket til kjærasten i ryggen

*You take off as you notice your sweetheart's gaze on your back*



Ein morgon har månen vakse. Du tar på deg kvite klede. I skinet frå månen vert du sjølvlysande.

*One morning the moon has grown You dress up in white clothing In the glowing moonlight You are translucent*

Når kloten kjem inn i skuggen og sola står på det lågaste over horisonten, då teier fuglane, vintersongen stilnar.

*The globe tilts into shadow the sun is hidden below the horizon. The birds are silent, the winter song dies out*

Klirringa frå greiner langt inni skogen, brølet frå is som skrur seg til over djupna i årets mørkaste døger.

*Clanging chiming from branches deep inside the forest roaring of ice that locks itself over the deep in the darkest night of the year.*

Kva for tonar spelar vona? Vinden virvlar i skalaer inn og ut av alle toneartar så du blir varm om øyra.

*With what tones can hope be played? Wind is whirling through registers in and out of all that can be sung and Your ears become so warm*

Den brende grana liknar ei kvit beingrind mot den mørke bakken. Eit nytt tre skal spire.

*The burnt out spruce tree looks like a white skeleton against the darkening hillside A new tree shall be born*

Dag for dag på veg ut av mørkret treng du ikkje snu deg, gleder følger hakk i hæl.

*Day by day a way out of darkness you don't have to turn 'round. Joy is always at your heel*

No skin vintersol over fjellet. Ein svart ramn stig i det blå og liknar ein drake festa til handa di.

*Shining winter sun over mountains a raven soars in the blue and resembles a kite tied to your little hand*

*Text: Hanne Bramness from selection of poetry from Vintersong, Ei bok om desember.*

*Nordsjøforlaget 2014, ISBN 978-82-92899-15-1*

*translated by Hanne Bramness and Lars Amund Vaage*

Støtta av  
Supported by



NORSK  
KULTURFOND  
Kulturrådet



KOMPONIST  
FORENINGEN

Traverso

Recorder

Percussion

Guitar

Lute

Theorbo

Harpisichord

Countertenor

Violin I

Violin II

Viola

Cello

Double Bass

range

highest note in use

SOPRANINO

SOPRANO

ALTO

VOICE FLUTE (tenor)

BASS FLUTE

Effects: glissando, sputtato, multiphonics, play/sing simultaneously, flutter tongue, + air (play/blow air), labial vibrato/gliss. etc.

Tambour Drum

Frame Drum

Darabuka

Tambourine and Bottle

Wood sounds

Foot Bells

Triangle

Flex. Cable

Medival Bells (notated)

(sounding in 415')

Tromp (jew's harp)

Bird Whistle

(snare on/off)

(pretuned to C 415')

(W.Bl. etc from choise)

Caxixi (Basket shaker)

This setup was used at first performance amount and pitches of available bells may be adapted for future performance

tuned in G 415' (or pitch ad lib.)

OPEN STRINGS

single string

diapasons are optional

Effect on Lute and Theorbo: use glass or "bottle neck" w. left hand to create gliss.

OPEN STRINGS

single strings (fretted, chromatically)

RANGE

chromatically

single strings (plucked only - no left hand)

fixed, but tunable

Theorbo is notated like the Guitar on fretted notes: discant clef sounding 8vb Diapasons is notated in bass clef sounding 8vb (like double bass)

RANGE (safe)

8'

ORGAN (POSITIV) RANGE

8' Gedackt

also 4' (sounding 8va)

The piece has been performed on an one manual instrumente with 8'+8' only. Comments to adapt for this kind of instrumente are notated in the part

Effect Organ: start with registers off, then pull very carefully (follow instruction in score) Result: sound will start barely audible and with clearly lower pitch (when register is fully pulled sound will be in tune and have normal volume)

Effects Harpsichord: 1) play lower manual rapidly without sound, carefully add and remove sound as instructed , to get touch of pitched notes. 2) use hair from bow (or similar stronger material) to get sound from one single string

normal range and lower (chest voice and barytone voice used in a few bars)

normal range for string instruments, gut strings

# Vintersong Winter Song

Knut Vaage  
Text: Hanne Bramness

Introduction  
\*Senza misura

1 2 3 4 5 A 2 3 4

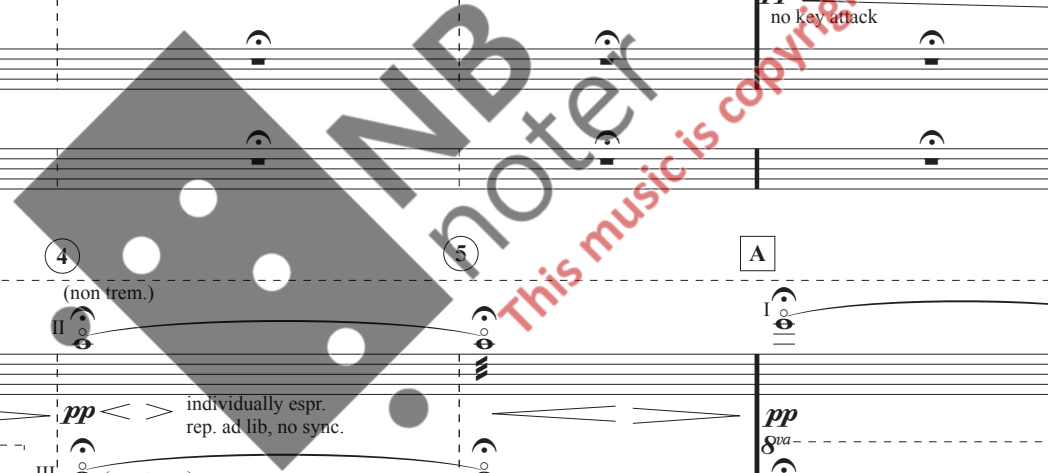
Traverso: (1) (2) (3) (4) (5) (A) (2) (3) (4)  
Bass recorder: (1) (2) (3) (4) (5) (A) (2) (3) (4)  
Recorder: (1) (2) (3) (4) (5) (A) (2) (3) (4)  
Percussion: Small Bells (one or more bells, pitch ad lib.) sparsely impro delicate Frame Drum rub skin w. flat hand  
Guitar: freely p freely l.v. all still freely keep w. Theorbo sul pont. pp f (sounding less) (9) (non flz) (come sopra) pp f (9)  
Theorbo: freely p (loco) l.v. all still freely keep w. Guit. rep. ad lib \* sul pont. pp f (sounding less) doubling traverso pp f  
Harpisichord: prepare d' with horsetail hair from bow. If needed for sustain, put a small heavy object to keep down key on letter A, make the string sound by dragging the hair from one side to the other bow (hair drag) no key attack (come sopra) pp  
Counter-Tenor: (1) (2) (3) (4) (5) (A) (2) (3) (4)  
Violin I: I n free bowing free bowing trem. ad lib (non trem.) individually espr. rep. ad lib, no sync. pp (A) (pp) (come sopra)  
Violin II: n free bowing free bowing trem. ad lib (non trem.) individually espr. rep. ad lib, no sync. pp (A) (pp) (come sopra)  
Viola: n free bowing free bowing trem. ad lib (non trem.) individually espr. rep. ad lib, no sync. pp (A) (pp) (come sopra)  
Cello: n free bowing free bowing trem. ad lib (non trem.) individually espr. rep. ad lib, no sync. pp (A) (pp) (come sopra)  
Double Bass: n free bowing free bowing trem. ad lib (non trem.) individually espr. rep. ad lib, no sync. pp (A) (pp) (come sopra)  
S.R. (S.R.)

\*\*give cue flz. (sounding less) (non flz) labid gliss ad lib

allow low intonation on PP pitch rising into normal on top of swell

\*cue The length of each bar can vary from what is natural for the instruments  
Theorbo left hand upbeat can be used as cue for next bar to come

\*\*cue from recorder



**B** Lento rubato (♩ = c. 58)

**C**

Trav. (come sopra) *pp* < *f*

B. Rec. (non flz) (lab. gliss. pitch ad lib.) ord. (lab. gliss.) (make Gb by half hole) F labial E *n* < *p* *n* < *p* *n* < *mp* < *pp* > *n* *n* < *mp* *pp* < *f*

Perc. (small bells) *pp* < *f* (frame dr., come sopra)

Gtr. freely *pp* < *f*

Tb. *(p)* cue freely *pp* < *f*

Hpschd. (come sopra) *pp* < *f* dampen strings ad lib.

C.Ten. (possibly play with the vowel "e" in direction of "a" and "i") *n* < *p* *pp* *mp* *pp* < *p* *gliss.* ("blue" note) *e*

**B** Lento rubato (♩ = c. 58)

**C**

Vln. I *pppp* add ind. variations in bowing ad lib. *p* *ppp* *mp* < *ppp*

Vln. II *pppp* add ind. variations in bowing ad lib. *p* *ppp* *mp* < *ppp*

Vla. *pppp* add ind. variations in bowing ad lib. *p* *ppp* *mp* < *ppp*

Vc. *pppp* add ind. variations in bowing ad lib. *p* *ppp* *mp* < *ppp*

D.B. *pppp* add ind. variations in bowing ad lib. *p* *ppp* *mp* < *ppp*

ord. S.R. sul pont. ord. S.R.

19

Trav.

B. Rec. (non flz) (make E by covering labium) F (labial Db) D (labial H) ord. (C) C (come sopra) (ord.)

Perc. (small bells)

Gtr. ord. impro open string flag. spread out (no sync) (impro)

Tb. ord. impro open string flag. spread out (no sync) (impro) un poco cresc.

Hpschd.

C.Ten. *pp* *p* *p* *n* *p* *pp* gliss de e

Vln. I (var. bowing -come sopra) *ppp* (come sopra)

Vln. II (var. bowing -come sopra) *ppp* (come sopra)

Vla. (var. bowing -come sopra) *ppp* (come sopra)

Vc. (var. bowing -come sopra) *ppp* (come sopra)

D.B. (var. bowing -come sopra) *ppp* (come sopra)

D

*pp* *p* *p* *n* *p* *pp* *p* *ppp* *ppp* *ppp* *ppp* *ppp* *ppp*

This music is copyright protected

28

Trav. CHANGE TO VOICE FL. Voice Flute *pp* (non cresc.)

Rec.

Perc. Medieval bell (tuned to 440, sounding c# in 415) *pp*

Gtr. *pp* arp. open strings l.v. all

Tb. *pp* arp. open strings l.v. all

Hpschd. (come sopra) *pp* *mp*

C.Ten. *mp dolce* intonate low 3rd in harmonics of A *pp* (unis w. D.B. in *8va*) (recorder continue) *p* *mp* "s" only no voice ord.  
 De - semb - er kjem så stilt så stilt med blått ly - s med  
 De - cemb - er breaks so still so still with blue light with

Vln. I *poco p* *ppp* (free rhythm, not in sync.) *pp* *pp*

Vln. II *poco p* *ppp* (free rhythm, not in sync.) *pp* *pp* sul pont.

Vla. *poco p* *ppp* (free rhythm, not in sync.) *pp* *pp* sul pont.

Vc. *poco p* *ppp* (free rhythm, not in sync.) *pp* *pp* sul pont.

D.B. *poco p* (S.R.) *ppp* *pp* (pitch to Voc) (5th partial on A-string) *pp* *pp* sul pont. *mf*



36 *ord.* *pp* *gliss.* *pp* *Senza misura* *mf* *labial gliss. flz.* *pp non cresc.* *mf* *Poco più mosso* ( $\text{♩} = \text{c. } 69$ ) *mf*

Trav. *pp* *gliss.* *pp* *mf* *pp non cresc.* *mf*

Rec. *mf* *pp non cresc.* *mf* *finger friction roll on drum skin (moaning sound)*

Perc. *mf* *(all bells sounding 440, with sharps)* *mf* *finger friction roll on drum skin (moaning sound)*

Gtr. *mf* *ord.* *p* *(blend w. traverso)* *f* *ord.* *f*

Tb. *mf* *ord.* *mf* *l.v. all* *pp* *f* *(upper note showing duration)*

Hpschd. *mf* *lower MAN. 4' only* *very rapid ad lib. ord.* *keep all notes w. finger ped.*

CTen. *pp* *mf* *p* *mp*  
*blått* *blå* *blått lys* *ov - er*  
*blue* *blue* *blue light* *ov - er*

Vln. I *pp* *mf* *ppp* *ord.* *p* *ppp* *p* *pp*

Vln. II *pp* *mf* *ppp* *ord.* *p* *ppp* *p* *pp*

Vla. *mf* *ppp* *ord.* *p* *ppp* *p* *pp*

Vc. *mf* *ppp* *ord.* *p* *ppp* *p* *pp*

D.B. *mf* *ppp* *ord.* *p* *ppp* *p* *pp*

Interlude 1

45

Trav. *solo*  
*pp* *mf* *pp*

Rec. *(pp)* *(non cresc.)* *pp*

Perc. *(come sopra)* *mf* **Tambour Drum** *p* *(ad lib, with Theorbo bass)*

Gtr. *(upper note showing duration)* *pp* *mf* *l.v. all* *pp* *poco ad lib.* *p*

Tb. *(trem.)* *mf* *pp* *l.v. all* *pp* *poco ad lib.* *p* *(keep low D steady w. drum)*

Hpschd.

C.Ten. *f dolce* *mp* *p* *mp*  
 lil - la fjord o - ver lil - la fjord  
 pur - ple fjord o - ver pur - ple fjord

Vln. I *mf* *pp sub.* *(non cresc.)* *p* *pp sub.*

Vln. II *mf* *pp sub.* *p* *pp sub.*

Vla. *mf* *pp sub.* *p* *pp sub.*

Vc. *mf* *pp sub.* *p* *pp sub.*

D.B. *mf* *pp sub.* *p* *pp sub.*

*sweep up and down on strings (tremolo)*

*poco ad lib.*

*(keep low D steady w. drum)*

*gliss.*

51

Trav. *mf* *p* *mf* *mp* *pp* *p* *ff* *sfz*

Rec. *lunga* CHANGE TO BASS RECORDER *lunga* *p* *ff* *sfz* Bass recorder *lunga* *p* *ff* *sfz*

Perc. *lunga* (w. fingers) *mf* *pp* *sfz* rapid rub on skin, flat hand

Gtr. *lunga* *mp* *mf* *pp* CHANGE TO LUTE

Tb. *mp* *mf* *pp*

Hpschd. *lunga* (4') *mf* *pp* lower MAN. all OFF pizz. on string  
press key silently

CTen. *lunga* breathe only *p* *ff* (come sopra) *mp* *molto*  
no voice fh sjh fh sjh fh

Vln. I *lunga* *p* *mf* *pp sub.* *n* brush muted strings longwise, rapidly *sfz*

Vln. II *lunga* *p* *mf* *pp sub.* *n* brush muted strings longwise, rapidly *sfz*

Vla. *lunga* *p* *mf* *pp sub.* *n* brush muted strings longwise, rapidly *sfz*

Vc. *lunga* *p* *mf* *pp sub.* *n* L.H. pizz. + *p* brush muted strings longwise, rapidly *sfz*

D.B. *lunga* *p* *mf* *pp sub.* *n* L.H. pizz. + *p* brush muted strings longwise, rapidly *sfz*

**F** Poco più mosso (♩ = c. 76)

1st of December, part 2

Prøv ut endring for å få fram kvalsangens: utset stryk til t. 60, men behald D.B. som notert. Evt kan strykarane nynna i takt 58-59 utset lutt til s. 9, utset Teorbe til t. 62, men behald basstonen som notert alternativt begge startar i t. 61, men Teorbe på 2. slag

57 [fh] *p* < *sfz*

Trav. [fh] *p* < *sfz*

B. Rec. *p* < *sfz* sputt./clicks bend improvise ad lib. imitate whale song (high soft gliss., sputtato etc.) keep back for vocal

Perc. wire brushes sideways trem. ord. **Flex Cable** *p* imitate whale song \* opt. add impro on Musical Saw

Lute *mf* *pp* all trills on two strings if poss.

Tb. *p* l.v. all *(p)* pizz. on string

Hpschd. R.H. strum, gliss. crosswise on low strings L.H. press silently b & w cluster i.v. all L.H. press silently keep while pizz. *(p)*

CTen. ord. *ppp* *mp* chest voice sah n - i Nis - er Por - poises (divide the tone into two spellings for -poises) Nis - er por - poises Nis - er sym for swim - ming bi by (hum continue)

Vln. I *ppp* *pp* (hum continue)

Vln. II *ppp* *pp* (hum continue)

Vla. *ppp* *pp*

Vc. *ppp* *pp*

D.B. *p* improvise ad lib.

\*Flexible electrical tube (50cm or longer) prepared on stand to be blown into (changing harmonics) imitate whale song (gliss. on artificial harmonics and small sounds eg. behind bridge)

Ensemble HUM when/if possible (TACET on Interlude 2)

64 G

Trav. *mf* *pp* **CHANGE TO SOPRANINO**

B. Rec. (opt. like perc.)

Perc.

Lute *mf* *pp* \*if available diapasons *mf* *pp*

Tb. *mf* *pp* *p* *mf* *pp*

Hpschd. (press silently low cluster) *mf* (come sopra)

CTen. *p dolce* *mf* *ppp* (w. traverso) *mp* *p dolce*  
 Nis - er sym for - bi langt u te Du kan høy - re an - de - dra - ga no.  
 Por - poises swim - ming by so far out You can lis - ten to their breath - ing now

G

Vln. I *mf* *ppp* HUM TACET inst.

Vln. II *mf* *ppp* HUM TACET inst.

Vla. HUM TACET inst.

Vc. HUM TACET inst.

D.B.

Interlude 2  
Lento molto (♩ = c. 54)

72

Trav. *mf* *pp*

So. R. *pp secco* Sopranino

Perc. TACET Bells/Triangle ad lib from lowest to highest bell sound, sparsely *pp*

Lute *mf* (duo w. Theorbo)

Tb. *mf* (duo w. Lute) *p* opt. add open G

Hpschd. (come sopra) *pp* (playing louder) pizz. ad lib, pluck w. nails on strings from low to high, sparsely impro continue (high pitches) (silently depressed high cluster)

C.Ten. *mf* *pp* move cluster silently higher to open strings for pizz.

Vln. I con sord. (hum TACET) *pp* 3

Vln. II con sord. (hum TACET) *pp*

Vla. con sord. (hum TACET) *pp*

Vc. con sord. (hum TACET) *pp*

D.B. TACET con sord. *pp*

*Lento molto* (♩ = c. 54)

*pp*

5th of December  
Colla Voce

79

Trav.

So. R. CHANGE TO BASS REC.

Perc. (2-3 high pitched bells, continue ad lib.)

Lute

Tb.

Hpschd.

CTen.

Vln. I

Vln. II

Vla.

Vc.

D.B.

*pp*

*mp dolce*

*mp*

*p*

Blei - ke stjer - ner  
Pal - ing stars

i dei blan - ke bøl  
in the shin - y sea

je - ne  
surg - ing

spæg - lar seg i lag  
gaz - ing at the waves

med ein ma - ger vin - ter - må - ne  
with a skin - ny win - ter moon

*fade bells*

*fade pizz.*

Quote 1\*  
Bewegt (♩ = c. 66-76)

Interlude 3\*  
Senza misura

85

Trav. Bass recorder

So. R. labial gliss. ord. labial gliss. *mp* *ppp* CHANGE TO SOPRANINO

Perc. finger friction roll on drum skin (moaning sound) *mp*

Lute arp. w. nails on short strings behind neck *sfz* Tap on body (vary w. tremolo)

Tb. arp. w. nails on short strings behind neck *sfz* Tap on body (vary w. tremolo)

Hpschd. lower manual R.H. impro chrom./rapidly highest keys *f* small rests ad lib. sim. (investigate point for sound ON/OFF) (grad.) (grad.) L.H. 4' ON 4' OFF only mechanical sound (4' sounding) (mech. only)

C.Ten. *sost. p dolce* *p* *sprechgesang* *p*

til langt på dag  
till tide at noon

ein mag - er vin - ter - må - ne  
a sku - ny win - ter moon

Vln. I *Bewegt* (♩ = c. 66-76) *pp* *n* *Senza misura* *senza sord.* *ppp* *mf*

Vln. II *pizz.* *senza sord.* *arp. w. nails behind bridge* *sfz* *(p)* *small perc. sounds*

Vla. *senza sord.* *arp. w. nails behind bridge* *sfz* *(p)* *small perc. sounds*

Vc. *senza sord.* *arp. w. nails behind bridge* *sfz* *(p)* *small perc. sounds*

D.B. *senza sord.* *arp. w. nails behind bridge* *sfz* *(p)* *small perc. sounds*

Impro: imitate Hapsich. very high rapid sounds

\* Pierrot Lunaire, Op. 21. Arnold Schoenberg, bar 4-6 (quoted and transformed)

Vaage/Bramness - Vintersong

\* Length vary for each bar but in this part quite short bars, always transformation



8th of December  
Misurata (♩ = c. 76-80)

Trav. (5) (H) 2 3 4 5 1 2 (tap)

So. R. (sopranino) imitate Voc. (high pitches ad lib.) (high pitches ad lib.)

Perc. **Trump** (jew's harp, in G or pitch ad lib.) vibr./air *f* single stroke (come sopra) add air/vibr. (shivering sounds) impro on rhythm *mp*

Lute ord. L.H. 3. position mute strings \* *pp* *mf* (come sopra) *pp* *mf* (tap)

Tb. ord. mute strings \* 3. position *pp* *mf* (come sopra) *pp* *mf* (tap)

Hpschd. 4' ON (4' sounding) 4' OFF (mech. only) 4' OFF (mech. only) 4' ON (4' sounding) 4' OFF (mech. only)

CTen. *mp* ord. 3 3 3  
Skog - mus - a  
Wood - land - mouse

Vln. I (5) (H) high pitch ad lib. squeaking sound 2 3 (come sopra) 4 5 1 2 Misurata (♩ = c. 76-80) ord. *ppp* *p* 3

Vln. II behind neck *sfz* behind neck ord. *pp* behind neck (perc) *pp* behind neck (perc)

Vla. behind neck *sfz* behind neck ord. *pp* behind neck (perc) *pp* behind neck (perc)

Vc. behind neck *sfz* behind neck ord. *pp* behind neck (perc) *pp* behind neck (perc)

D.B. behind neck *sfz* behind neck ord. *pp* behind neck (perc) *pp* behind neck (perc)

\* Lute/Theorbo: trem. w. all fingernails (shivering sound)  
L.H. mute strings, on grace notes:  
shortly press barré to create more sound  
(improvise rhythms w. marc. ad lib.)

104

Trav.

So. R. (sopranino) *mp* *mf* *p* *mf*

Perc. w. Lute (rhythm cont.)

Lute *pp non cresc.* trem. (w. flat fingers) whispering sound *pp* tamburo (stroke og strings w. side of thumb close to bridge) l.v. (come sopra) *pp*

Tb. *pp non cresc.* *pp* (come sopra) *pp*

Hpschd. 4',8' OFF *pppp non cresc.* trem. crosswise w. fingers on strings (making chord sound) (come sopra)

C.Ten. *mf* *ppp* *p* *ppp sub.* (grad. trill)

Vln. I *mf* *ppp* *p* *ppp sub.* (trill to b<sup>b</sup> sim.)

Vln. II *ppp non cresc.* (trill to g sim.) *ppp*

Vla. *ppp non cresc.* *ppp*

Vc. *ppp non cresc.* *ppp*

D.B. (trill to c sim., keep whole tone on gliss.) (slow gliss.) *ppp non cresc.* *ppp*

gøymt i mos - en Skog - mus - a ligg og skjelv  
 hid in heath - er Wood - land mouse - lies trem - bling

**I**

Trav.

So. R.

Perc. w. Lute (rhythm cont.)

Lute tamburo

Tb. tamburo

Hpschd.

CTen.

Vln. I

Vln. II

Vla.

Vc.

D.B.

CHANGE TO BASS REC.

CHANGE TO ORGAN

pp mf (3) (6) single stroke

(come sopra) pp (f) p dolce

(chrom. trills)

(trem.) (rep.) p dolce

Skog - mus - a Kjen - ner dra get i luf - ta len - ge før  
 Wood - land mouse feel - ing a draft in the air long be - fore

pp 3 mf pp

opt. (pitch to Voc)

(poco)

ppp

ppp

ppp

ppp

ppp

Interlude 4  
blow air

116

Trav. [Musical staff]

Rec. [Musical staff] Bass recorder +air (hollow sound) *pp* (come sopra) *p*

Perc. [Musical staff] Triangle *pp* *p*

Lute [Musical staff] (trem.) (rep.) *p sempre* (3 2 1) (4 3 2) (5 4 3) (5 4 3) (6 5 4) (6 5 4) (6 5) (6 5)

Tb. [Musical staff] (rep.) sim. *p sempre* (4 3 1) (4 3 1) (4 2 1) (5 4 2) (4 2 1) (5 4 2) (5 4 2) (6 5 2) (6 5 2) (6 5) (chrom. trills)

Hpschd. [Musical staff] Organ R.H. keep note, result, start "niente" low and soft. When 4' is pulled, normal sound L.H. carefully pull 4' (grad. sound/cresc./rising pitch) 4' OFF 4' ON gradually push 4' back to half position ad lib. sim. (gradually push/pull between half and full position)

CTen. [Musical staff] len - ge før snø - en len - ge før snø - en fell  
long be - fore snow - flakes long be - fore snow - flakes fall

Vln. I [Musical staff] *pp*

Vln. II [Musical staff] *pp*

Vla. [Musical staff] *pp*

Vc. [Musical staff] *pp*

D.B. [Musical staff] *pp*

124 **J** *Meno mosso* (♩ = c. 72) (high air sound) (lower air sound) (come sopra)

Trav. *mp* *pp* < *mf* *pp* < *mf* *pp* < *mf* *pp* < *mf* *pp* < *mf* *pp* < *mf*

B. Rec. (come sopra) *mp* *pp* < *mf* *pp* < *mf* *pp* < *mf* *pp* < *mf* *pp* < *mf* *pp* < *mf*

Perc.

Lute *p* *ppp*

Tb. *pp*

Org. 4' HALF 4' ON 4' OFF *n* result: R.H. (low pitch, less volume) start from "niente" grad. pull 8' carefully w. L.H. all OFF 8' OFF

CTen. *mf* (blow air) 1) *pp* sub. ord. *pp* shh(y) shh(y) who shh(y) who *ord. p* \* Vin - den byr - jar som ein sped Wind starts off as a frail \* cresc. in voc. to balance w. organ getting grad. stronger

**J** *Meno mosso* (♩ = c. 72) (non trem.)

Vln. I flautando, sul tasto *ppp* *p*

Vln. II flaut. (non trem.)

Vla. flaut. (non trem.) (flaut. molto) *pp* < *mp*

Vc. flaut. (non trem.) (flaut. molto, flag. on III) *pp* < *mp*

D.B. flaut. (non trem.) senza sord. pizz. 3 3 3 3 3 3 3 3 3 3 3 3 3 3 3 3 3 3 *pp* (murmurando)

1) Resonance from 'a' in air stream, not voiced  
 2) mostly air and lip resonance (a little voiced)

133

Trav. (come sopra)

B. Rec. (come sopra) *ppp* *mf* *pp* *mf* *pp* *mf* *pp* *mf* *pp* *mf*

Perc. Tambourine finger friction roll *pp* *mf*

Lute *f* *ppp* *mf* *p* *ff*

Tb.

Org. ord., pitch/volume R.H. (come sopra) ord. L.H. *n* 8' ON 8' HALF 8' OFF 8' ON

CTen. (hollow) distorted *mf* (come sopra) *p* *mf* ord. *pp* *f* *pp* *mf* *pp* *mf* *pp* *mf* *pp* *mf*

Vln. I flaut. *ppp* (flaut.) *f* *ppp* *f* *pp* *f*

Vln. II *ppp* (flaut.) *mf* *ppp* *mf*

Vla. *ppp* (flaut.) *mf* *pp*

Vc. *ppp* (flaut.) *mf* *ppp* *mf*

D.B. *ppp* *mf*

to - ne in - ne i det ho - le bei - net shh(y) who shh(y) who Vind - en byr - jar som ein sped to - ne  
sing - ing deep in - side the hol - low struc - ture Wind starts off as a frail sing - ing

MB noter This music is copyright protected

K

K

Interlude 5

142

Trav. (come sopra)

B. Rec. into multiph. [sing] [play] (+air) [sing]

Perc. finger friction roll on drum skin (moaning sound) (tamb.) (drum skin)

Lute (upper note showing duration)

Tb.

Org. ord. 6 R.H. L.H. (come sopra) n

8' HALF 8' ON 8' OFF 8' ON 8' OFF

CTen. (hollow) ord. 3 (come sopra) mf ord. 3 pp non cresc.

in - ne i det ho - le bei - net i ein fug - le - veng vind - en who i ein fug - le - veng o

deep in - side the hol - low struc - ture of a bird's - wing wind - shh(y) in a bird's - wing

Vln. I

Vln. II

Vla.

Vc.

D.B.

*This music is copyright protected*

150

Trav. *pp* *mf* *pp* *mf* *pp* *mf* *pp*

B. Rec. *pp* *mf* *pp* *mf* *p* *mf* *f* *ff* *pp* *mf*

Perc. (tamb.) *mf* *pp* *mf* *pp* *mp* *pp* *mf* *ff* *pp* *mf*

Lute *ff* *pp* *mf* *p* *pp* *cresc.* *mp* *f* *ff* *mp*

Tb. *mf* *pp* *mf* *p* *mf* *f* *mp* *mp* *mf* *mp*

Org. R.H. L.H. *8' OFF* *8' ON* gliss. ad lib. "drop" ad lib.

CTen. (non cresc. -faded into the ensemble)

Vln. I *f* *ppp* *f* *mp* *f*

Vln. II *pp* *mf* *ppp* *pp* *mf* *p* sub. *mp*

Vla. *p* *mf* *p* sub. *mf*

Vc. *p* *f* *f*

D.B. *pp* *mp* *mf*

flz. (unis. Theorbo) *pp* *mf* *f* *ff*

[sing] (non flz.) *pp* *mf*

[play] *pp* *mf*

rhythm continue, variate ad lib.

ord.

ord. (opt. play all on Tambourine)

sim.

gliss. ad lib.

"drop" ad lib.

detaché

3 2 1



155

Trav. *f* (blend w. Vln 1) *ff* "drop" ad lib. *ppp* blow air *p* *n* **M Senza misura** ②

B. Rec. *ff* highest "drop" ad lib. *ppp* +air (hollow) *p* *n*

Perc. *mf*

Lute *mf* (with D.B.) *f* *ff* CHANGE TO GUITAR

Tb. *mf* *f* *ff* *pp*

Org. *p* (finger ped) ord. 8' 4' palm gliss. "drop" ad lib. CHANGE TO HARPSICORD

C.Ten. rhythms ad lib. *f* poss. no voice guttural low ad lib. *impro.* (sounding *pp*)

Vln. I *f* *ff* *pp* flaut. **M Senza misura** ②

Vln. II *mf* *ff* "drop" ad lib.

Vla. *poco cresc.* *al* *f* *ff* "drop" ad lib.

Vc. *mp sub.* *ff* "drop" ad lib.

D.B. *f* *ff*

10th of December  
Misurata (♩ = c. 112)

Trav. **3** tap *f* *poss. (sounding pp)* **4** impro. sparcely **5** TACET **N** **2** (come sopra) **3** TACET

B. Rec. tap *f* *poss. (sounding pp)* impro. sparcely TACET (come sopra) TACET

Perc. Impro on "edgy" instruments from choice *mp* TACET (come sopra) *mp* **Wood sounds** *f* <sup>3</sup>

Gtr. Tap on wood with nail behind neck *p* Tap on wood with nail behind neck *p* TACET *f* ord. *f* l.v.

Tb. Tap on wood with nail behind neck *p* Tap on wood with nail behind neck *p* TACET *f* ord. *f* l.v.

Hpschd. Harpsichord knock on wood (at the sides of the manual) *p* *mp* TACET Coupler ON 8' 8' (on keys) low cluster opt. mute strings to get secco ord. *mf* chest voice

C.Ten. (optional add voice clicks) (impro continue) (come sopra) kk kk kk gg TACET ord. *mf* chest voice

Vln. I **3** **4** **5** crush (or other perc. effect) improvise into sound landscape *mp* *secco molto* **2** TACET *f* **3** (come sopra) *mp* *f*

Vln. II crush (or other perc. effect) improvise into sound landscape *mp* *secco molto* TACET *f* (come sopra) *mp* *f*

Vla. crush, sul tasto molto *pp* TACET *f* *pp* (come sopra) *f*

Vc. crush (or other perc. effect) improvise into sound landscape *mp* *secco molto* TACET *f* *mp* (come sopra) *f*

D.B. arco small dry sounds ad lib. *mp* *secco* TACET *f* *mp* (come sopra) *f* *p* *sub.*

168

Trav. *ord.* **O**

B. Rec. *sputtato* *mp* *fp* *sputtato*

Perc. (Caxixi) (Wood sounds ad lib.) (W.bl.) *mp* *f* (Caxixi) *3*

Gtr. *mp* *mp* *f*

Tb. *mp* *mp* *fp* *f*

Hpschd. Coupler OFF *upper MAN* *low clusters* *lowest cluster*

C.Ten. *chest voice* *mf* *ord.* *chest voice* *ord.*

stein - ur - a  
Stone - wall - blue

brat - te i den brat - te  
slant - ing in the slant - ing

i den brat - te  
in the slant - ing

stein - ur - a  
Stone - wall - blue

Vln. I *pizz.* *mp* *f* **O**

Vln. II *pizz.* *mp* *f*

Vla. *pizz.* *mp* *f*

Vc. *pizz.* *mp* *f*

D.B. *jeté* *3* *f* *p sub.* *jeté* *3* *fp*

180

Trav. *pp* gliss. *pp* **P** *mp* *Meno mosso* (♩ = c. 72)

B. Rec. *pp* *mp*

Perc. **Bells** *pp* **Triangle** *pp* **Medieval bells** *mp* (opt. add Footbells)

Gtr. *mp* *p* *mp* impro harmonics open strings *p*

Tb. *mp* *p* *mp* impro harmonics open strings *p*

Hpschd. 4' only

CTen. chest voice *f* ord gliss. *mp* *f*  
 i i den brat - te blå den brat - te blå veg - gen med tjuk - ke og tyn - ne is - jukl - ar  
 o in the slant - ing blue the slant - ing blue stone - wall with stur - dy and slen - der i - ci - cles

Vln. I arco I *p* *pp* *poco* **P**

Vln. II arco *pp* *poco*

Vla. arco sul pont. *pp* *poco*

Vc. arco sul pont. *pp* *poco*

D.B. *p sub.* *pp* *poco* *p* *pp* w. Vocal

*Meno mosso* (♩ = c. 72)

190

Interlude 6

Trav. *ppp* *ord.*

B. Rec. *pp* *mf* *pp* *mf*

Perc. *mf* *p* *mf* *pp* *mf* *pp* *mf*

Gtr. *(impro harmonics spread out)* **CHANGE TO LUTE**

Tb. *(impro harmonics spread out)* *pp* *(pp)* *(421)* *sim.* *(trem.)*

Hpschd. *keep fingerped.*

C.Ten. *p (non cresc.)* *pp* *p* *f* *ord.* *pp* *f (into traverso)*

Vln. I *mf* *ppp* *fp* *ppp* *ord.* *mf* *ppp* *(non cresc.)* *mf*

Vln. II *mf* *ppp* *fp* *ppp* *ord.* *mf* *ppp* *(II)* *mf*

Vla. *mf* *ppp* *fp* *ppp* *ord.* *mf* *ppp* *mf*

Vc. *mf* *ppp* *fp* *ppp* *ord.* *mf* *ppp* *mf*

D.B. *mf* *ppp* *fp* *ppp* *ord.* *mf* *ppp* *mf*

*(S.R.)* *ord.*

*blow air* *into M.ph.* *+ air* *(come sopra)* *(into M.ph.)*

*finger friction roll on drum skin (moaning sound)*

*small gliss.*

*keep fingerped.*

*keep - fingerped.*

*med is - jukl - ar spel - ar vind - en o som på org - el pip - er o*  
*with i - ci - cles the wind play - ing as on or - gan - pipes*

*(non trem.)* *(open I)*

*ord.*

*ord.*

*ord.*

*ord.*

*ord.*

*ord.*

*ord.*

*ord.*

196

Trav. *f* *pp* *pp* *f* *mp* *ff* *p* *f*

Rec. *p* *ff* *p*

Perc. *pp* *cresc.* *mp* *cresc.* *f*

Lute *mf* *ff* *mp*

Tb. *f* *pp* *p* *mf* *ff* *mp*

Hpschd. Coupler ON 8' 4' Coupler OFF  
upper MAN  
lower MAN.  
i.v. -----  
Sharp

CTen. *pp* *f* *mp* *ff* *f*

Vln. I *ppp* *mf* *ff* *p sub.* *ff* *p*

Vln. II *ppp sub.* *mp* *ff* *pp*

Vla. *ppp sub.* *mp* *ff* *pp*

Vc. *ppp sub.* *p* *mf* *mp* *ff* *pp*

D.B. *ppp sub.* *mp* *ff* *p*

ord. (opt. play all on Tambourine)

Tambourine

Senza misura

Misurata (♩ = c. 72)

blow air

2 Sopranos  
(1. sopr.: higher w. cresc.  
2. sopr.: gliss. down)

Vind  
Wind

detaché

detaché

(6th partial)

202

Trav. *p* *ff* *pp* *ff* *pp* *mf* *p* *mf*

Rec. *ff* *pp* *ff* *p*

Perc. Bottle blow air *pp* *ff*

Lute

Tb.

Hpschd. l.v. l.v. lower MAN 4'

CTen. *mf* *f più* *mf*

Vind - ton - ar Wind mu - sic  
 treng - jer gjen - nom veg gen treng - jer gjen - nom veg - gen  
 push - ing through the wall push - ing through the wall

Vln. I *ff* *p* *ffp* *pp* *mp*

Vln. II *mp*

Vla. *p* *gliss.* *ffp* *pp* *mp*

Vc. *p* *gliss.* *p* *pp* *pp*

D.B. *mf* *p* *mf* *p* *mf* *p*

Q

Trav. *ord.*

Rec. *pp* (1. sopr.) *f* CHANGE TO BASS REC.

Perc. blow air *pp* *ff* Triangle and high bell *p*

Lute *f* 6 3 *pp* *ff* *p* 3 3 *mf* 6 3 *p*

Tb. *f* *mp* *pp* *mp* (chrom.)

Hpschd. if one manual only, play lower system 8va w. R.H. upper (8') lower (4') fingerped. ---

CTen. *mf* *f<sup>piu</sup>* *mf* *mf* *pp* *fpp*

Vind - ton - ar \_\_\_\_\_ set swing - ing - a - ne i gang set swing - ing - a - ne i gang i  
 Wind mu - sic \_\_\_\_\_ the swing - ing start - ing off in the swing - ing start - ing off in a

Vln. I *ff* *mp* *fp* *pp* *fpp* *p* sul pont. II/III

Vln. II *pp* *fp* *pp*

Vla. *ppp* *p* sul pont.

Vc. *ppp* *p* sul pont.

D.B. *mf* *pizz.* *mp* 3 3 3 3



211 **Meno mosso** *Interlude 7*  
 (♩ = c. 116-126)

Trav.

B. Rec. Bass recorder into multiphonics ord.  
*n pp mf mp mf pp sub. p*

Perc.

Lute *p*

Tb.

Hpschd. (keep fingerped.) ----- keep fingerped. -----

CTen. *p mf p sub. p*  
 glas - et med vat - n  
 glass of wa - ter  
 a i a o a o a i a o a o a o

Vln. I *n* ord. *p sul tasto mf*

Vln. II

Vla. ord. *mf pp sub. p mf p* ord. *pp sul tasto p*

Vc. I/II *pp* sul tasto

D.B. *n pp mf pp sub. mf*  
 sul pont. (poco ad lib. sul pont. <---> ord.)

218

Trav.

B. Rec. *mf pp sub.* *p* *mf pp sub.* *p* *mf pp sub.* *mp* *ppp*  
 into multiph. ord.

Perc. **Frame Drum**  
 articulate/variare ad lib.  
*pp* (rhythm w. D.B.)

Lute *mf*

Tb. *p* *mf*

Hpschd. (keep fingerped.)  
 (prepare lower MAN: 8' coupler ON)  
 upper MAN

CTen. *mf* *f* *mp*  
 chest voice - -  
 Kan du  
 Can you

Vln. I *p sub.* *mf* *p* *mf* *p sub.* *mf pp sub.* *mp* *n*  
 sul pont.

Vln. II *mf* *pp sub.* *mf* *pp sub.* *mf* *pp sub.* *mp* *n*  
 sul tasto ord. sul tasto (grad. to sul pont.) sul pont.

Vla. *mf* *p sub.* *mf* *p sub.* *mf* *p sub.* *mp* *ppp*  
 sul tasto III/IV ord. sul tasto

Vc. *p sub.* *pp* *mf* *pp* *mf* *pp* *ppp*  
 sul tasto ord. sul pont. ord. sul pont.

D.B. *mf* *pp sub.* *mf* *p sub.* *mf* *p sub.* *mf* *p sub.* blend w. Frame drum

223

Trav.

B. Rec.

Perc.

Lute

Tb.

Hpschd.

CTen.

Vln. I

Vln. II

Vla.

Vc.

D.B.

*mp*

*pp sub.*

*pp*

(come sopra)

*mf*

*pp*

flz.

*mp*

*pp*

*mp*

*mf*

CHANGE TO GUITAR

*mf*

*p*

*mf* poco cresc. sempre chest voice

chest voice

chest voice

fly - ge

fly

Kan du fly - ge så fort

Can you fly so fast

o a o e i a o a o e i a e

Kan du fly - ge så fort, kan du fly - ge så fort, Kan du fly - ge så

Can you fly so fast, can you fly so fast, Can you fly so

with vocal

(echoing Voc.)

with vocal

*pp*

*p*

*mp*

*mp*

*pp*

*pp*

*mp*

*pp*

*p*

*mf*

*mp*

*pp*

*p*

*mf*

*mp*

*pp*

*p*

*mf*

*mp*

*pp*

**R**

Trav. *mp* *f* *pp* *f* *p sub.* *f* (echoing Voc.)

B. Rec. *mf* *pp*

Perc. *mp* *p* *mp*

Lute *f* (chrom.) *mf*

Tb.

Hpschd. (upper Man.) lower MAN. upper MAN. (lower man.)

CTen. *f mp* *f* *f* chest voice *mp* *f* *mp* *f*  
 o a o e i a o a o e i a Kan du fly-ge så fort at du når a â e â e â  
 Can you fly so fast that you catch a â e â e â

**R**

Vln. I *mf* *p* *f* *p* *mf pp sub.* *mf*

Vln. II *mf* *mp*

Vla. *mp* *mp* *pp* *mf* *mf* *mp*

Vc. *mp* *p* *mf* *mp* *mf*

D.B. *mp* *p* *mp*

233

Trav. *p sub.* *f* solo (echoing Voc.) *mf* *pp* *fz.* *ord.* **S**

Rec.

Perc. *mf* *p* *fp*

Lute *f* *mp* (chrom., 2 strings) *f* *mp* *f* *mp* *f* *mp* *mf* *sim.* ② ④

Tb.

Hpschd. (upper man.) (lower man.) (upper man.) (lower) (upper)

C.Ten. *mp* *f* *f*  
 a å e å e å e å e å Kan du fly-ge så fort, Kan du fly-ge så fort at du når Kan du fly-ge så fort at du når deg  
 Can you fly so fast, Can you fly so fast that you catch Can you fly so fast that you catch

Vln. I *pp* *mf* with vocal (echoing Traverso/Voc.) **S**

Vln. II *mf* *p* *fp*

Vla. *mf* *p* *fp*

Vc. *p* *fp*

D.B. *mf* *p* *fp*

Meno mosso

Movendo

A tempo

Interlude 8

238

Trav. *(mf)*

Rec. *mf*

Perc.

Lute *ff* *p* *pp*

Gtr. *pp*

Hpschd. lower MAN. (lower)

CTen. *ff* *p*

Vln. I *(mf)* *ff* *pp*

Vln. II *mf* *ff* *pp*

Vla. *mf* *ff* *pp*

Vc. *mf* *ff* *p*

D.B. *ff* *p* *pp*

sjølv \_\_\_\_\_  
up \_\_\_\_\_

nar deg sjølv i - gjen \_\_\_\_\_  
Catch up with your - self

deg sjølv i - gjen \_\_\_\_\_  
up with your - self

e i a o a o

245

♩. → ♩ (♩ = c. 116)

Trav. *ppp* *ff legato*

Rec. *ff legato*

Perc. *p sub.* *cresc. p. a p.* (*mp*)

Lute strum *p*

Gtr. *mfz pp* *mfz p* *sfz* *sfz* *sfz* *sfz* *f* *sfz p* *f* *sfz secco* *sfz secco* *sfz*

Hpschd. lower MAN 8' upper MAN 8' opt. 8vb if one manual only

C.Ten. a

Vln. I *pp* *ff* *detaché* *IV*

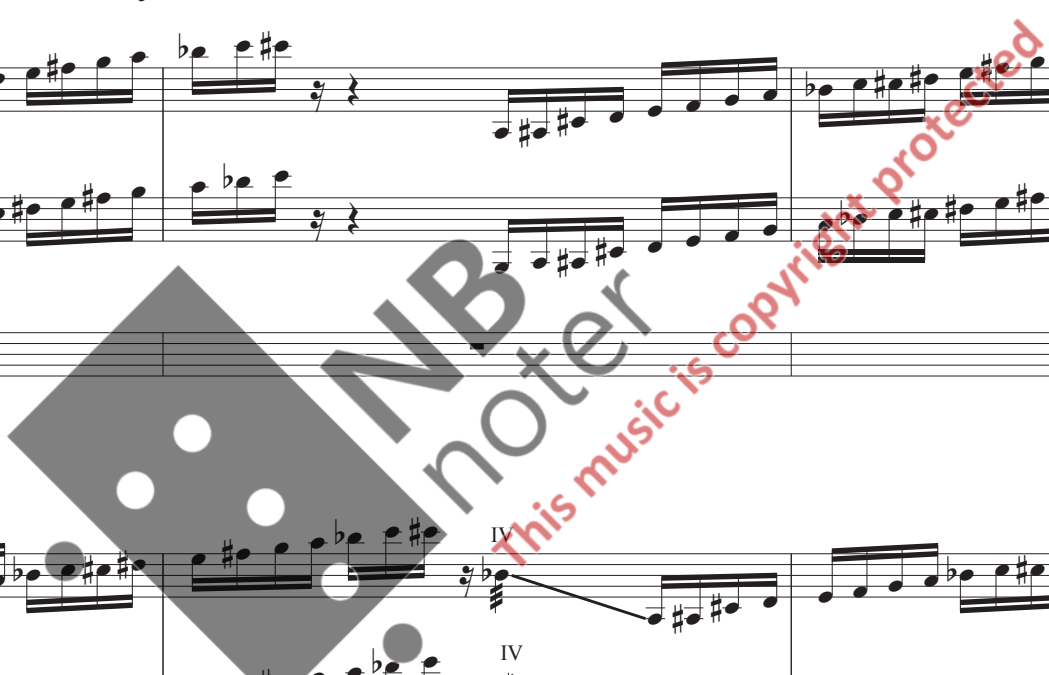
Vln. II *pp* *ff* *detaché* *IV*

Vla. *ff* *f* *detaché* *ff (unis. D.B.)* *mf*

Vc. *ff* *detaché* *ff* *detaché* *mp sub.* *cresc. p. a p.* (*mp*)

D.B. *ff* *detaché* *mp sub.* *cresc. p. a p.* (*mp*)

*molto ritmico e secco*



250

Trav. *molto ritmico e secco*

Rec. *f* *spiccato molto ritmico e secco* *fff* *ord.* *mf*

Perc. *(mf)* *add Foot bell* *fff*

Lute *f* *sim.* *(strum)* *fff* *fff* *f*

Gtr. *sfz* *mf* *f* *sim.* *(strum)* *fff* *fff* *f*

Hpschd. *Coupler ON lower MAN.* *l.v. al n.*

CTen.

Vln. I *molto ritmico e secco* *f* *fff* *mf*

Vln. II *molto ritmico e secco* *f* *fff* *mf sub.*

Vla. *molto ritmico e secco* *cresc. p. a p.* *f* *fff*

Vc. *(mf)* *f* *fff*

D.B. *(mf)* *f* *fff*



12th of December, part 2

255 Colla Voce

Trav.

Rec. CHANGE TO BASS REC.

Perc.

Lute \* careful slap, drag string a little by thumb and first finger, over sound hole, release  
p

Gtr. CHANGE TO THEORBO

Hpschd.

CTen. *p*  
Du let - tar når du kjen - ner blik - ket til kjær - ast - en i ryg - gen Du let - tar når du kjen - ner blik - ket i ryg - gen  
You take off as you no - tice the gaze your sweet - heart's gaze on your back You take off as you no - tice the gaze on your back

Vln. I *ppp sempre*

Vln. II con sord. *ppp sempre*

Vla. con sord. *ppp sempre*

Vc.

D.B.

possible stop  
for tuning

Interlude 9  
Lento molto (♩ = c. 54)

Trav. 265

B. Rec. *ppp non cresc.*  
Bass recorder (optional cloth in bell)  
labial gliss.

Perc. Bird Whistle *pp* *ppp*  
improvise bird song (sparcely, imagine single bird, winter song)

Lute *mfz*  
ord. (duo w. Theorbo)

Th. Theorbo *p* (duo w. Lute)

Hpschd. pizz. ad lib. (come sopra)  
all OFF silently press under-arm cluster *pp*  
(move arm higher, silently)

CTen. blik - ket  
the gaze

Vln. I // Lento molto (♩ = c. 54)  
con sord. *pp*  
(changed from bar 75)

Vln. II *pp*

Vla. *pp*  
con sord.

Vc. *pp*

D.B. con sord. *pp*



13th of December

271

Trav.

B. Rec.

Perc.

Lute

Th.

Hpschd.

CTen.

Vln. I

Vln. II

Vla.

Vc.

D.B.

*pp* *ppp* *pp* *pp*

Bells/Triangle

impro. sparsely

TACET

*p*

chest voice

Ein mor-gon har mån - en vak - se  
 One morn-ing the moon has grown

Du tar på deg kvi - te kle - de  
 You dress up in white cloth - ing

i skin - et frå mån - en  
 In the glow-ing moon - light

vert du  
 You

Quote 2  
Bewegt (♩ = c. 66-76)

Interlude 10  
Senza misura

278

Trav.

B. Rec.

Perc.

Lute

Th.

Hpschd.

CTen.

Vln. I

Vln. II

Vla.

Vc.

D.B.

*ppp*

*p*

*ppp*

fade

fade

*ppp*

*p*

*pp*

*pp*

*ppp*

*ppp*

into multiphonics

\* lowered half tone by partly covering end of flute by foot

Frame Drum

finger friction roll

(come sopra)

R.H.

L.H. silently press B&W cluster

sprechgesang  
*p*

sjølv - lys - an - de  
are trans - lu - cent

Ein mor - gon har mån - en vak - se grown  
One morn - ing the moon has grown

(hollow)

å

å

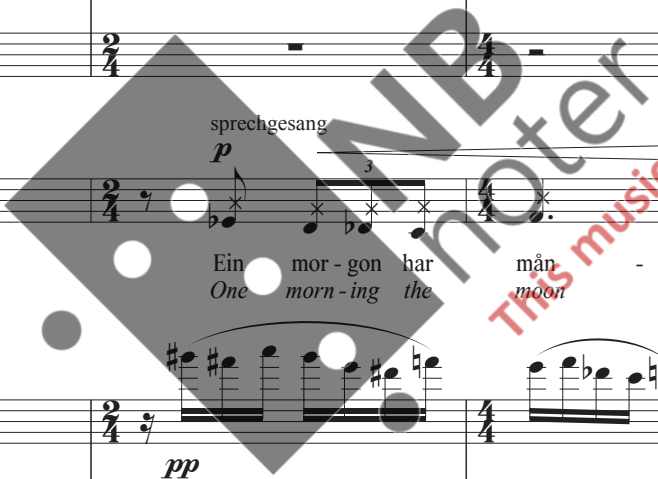
Senza misura

2 3 4 5

*ppp*

*ppp*

*n p*



This music is copyright protected

20th of December  
Misurata (♩ = c. 66)

U

Trav.

B. Rec. *mp* *pp* *mp* flz. into multiph. non flz. ord.

Perc. *mp* (come sopra) *mp*

Lute if available diapasons *p* l.v. (come sopra)

Th. *p* rapidly ad lib. l.v. *pp* *mf* *pp dolce* (come sopra)

Hpschd. strum, gliss. crosswise on low strings

C.Ten. *ord. mp*

Når klot - en kjem inn i skug - gen  
 The globe - tilts in - to sha - dow

og so - la - står på det låg - ast - e  
 the sun - is hid - den be - low -

U

Misurata (♩ = c. 66)

Vln. I (con sord.) *ppp* (con sord., non trem.) *ppp*

Vln. II (con sord.) *ppp* (non trem.) *ppp*

Vla. *ppp* (con sord.) *mp* *ppp*

Vc. (con sord.) *pp* *ppp* (non trem.) *mp* *ppp* (non trem.)

D.B. *ppp* (non trem.) *mp* *ppp* *mp* *ppp* (non trem.) *mp*

295

V

Trav. *pp*

B. Rec. (come sopra) (non flz.) *mp* *pp* *pp sempre* ord.

Perc. *pp* Bell (440 f will sound 415 f#)

Lute *pp* (blend w. traverso) (rep.)

Th. *pp*

Hpschd.

C.Ten. chest voice  
 Ov - er ho - ri - sont - en so - la en låg - ast på ho - ri - sont - en  
 Ov - er the ho - ri - zon the sun the low the ho - ri - zon

Vln. I (non trem.) *p* *pp sub.*

Vln. II (non trem.) *p* *pp sub.*

Vla. (non trem.) *mp* *p*

Vc. *mp* *pp*

D.B. *pp*

NB noter This music is copyright protected

301

Morendo

Interlude 11

Trav. *ppp* *mp* *gliss.*

B. Rec. *ppp* *mp*

Perc. high bell, pitch ad lib. *mp*

Lute *ppp* *mf* *freely* *pp* 5

Th. *ppp* *mf* *freely* *pp* 5 *ppp*

Hpschd. (come sopra) *mp* (silently press cluster) strum, gliss. on strings l.v.

C.Ten. *p* *sostenuto*

Vln. I senza sord. *ppp* *Morendo*

Vln. II senza sord. *ppp*

Vla. senza sord. *ppp*

Vc. senza sord. *ppp*

D.B. senza sord. S.R. *ppp*

da - tei - er fug - la - ne Vin - ter - song - en stil - nar Vin - ter - song - en  
 The birds are sil - ent the win - ter song dies out win - ter song dies

W (♩ = c. 80)

22th of December

Trav. *mf* *secco* *sputtato* *mf* *sputtato* *mp*

B. Rec. *mf* *mp*

Wood sound *mf* *mp*

Perc. *mf* *mp*

Lute *mfz secco* (snap muted string high position (to get short string)) *mp* (come sopra)

Th. *mfz secco* (snap muted string high position (to get short string)) *mp* (come sopra)

Hpschd. *mf* (knock on wood (both sides of the manual)) *mp*

CTen. *mf* (percussive) *ord.* *p*  
 Klir - ring Clang - ing klir - ring chim - ing klir - ring clang - ing klir - ring - a fra grei - ner langt  
 chim - ing chim - ing from branch - es deep

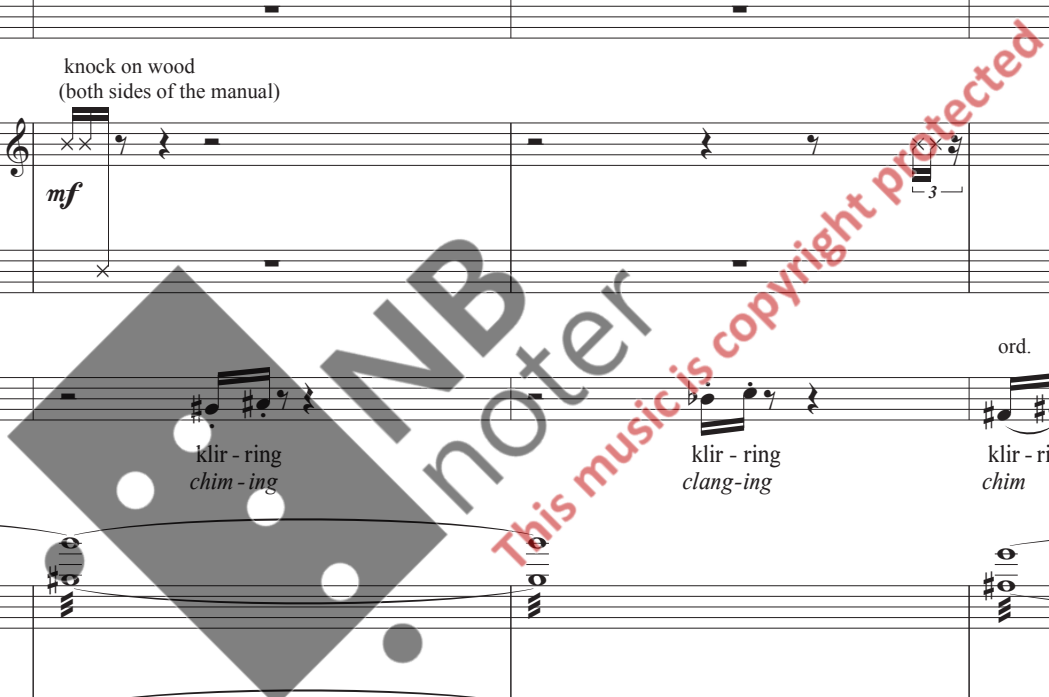
Vln. I *ppp* sul pont. *ord.*

Vln. II *ppp* sul pont. *ord.*

Vla. *mf secco* crush (come sopra) *mp* *ppp* *ord.*

Vc. *f* col legno poco, jeté \* flautando (come sopra) *pp* *mf* *f* *mf* *mf* *pp* *mf*

D.B. *pp* flautando *f* col legno poco, jeté \* (come sopra) *pp* *mf* *f* *pp* *mf*



\* angle bow to use hair and wood equally



315

Trav. *mf* *pp* *ff* *pp* *ff* *ff* *ff* *pp*

B. Rec. *mf* *pp* *ff* (continue Voc.)

Perc. *mf* *f* non troppo

Lute *mf* *f* *pp* *sfz*

Th. *mf* *p* *f* *sfz*

Hpschd. lower MAN 8' 8' OFF, 4' ON keep fingerped. I.v. all

C.Ten. *mf* *f* (*ff*) (match dynamic w. Bass Rec.) *mf*

Vln. I *f* crush *pp* *ff* *pp*

Vln. II *f* crush *pp* *ff* *pp*

Vla. *f* crush *pp* *ff* *pp*

Vc. *mf* *pp* *mf* *pp* *ff* *pp*

D.B. *pp* *mf* *f* *pp* *ff* *pp*

ord. sul pont. crush col legno, jeté (highest)

Colla voce A tempo

ord. *p* sub. *ff*

Bells (pitch ad lib.) *f*

in - ne i skog - en, in - side the for - est brøl - et frå is som roar - ing of ice that

X

Poco meno mosso

Trav. \_\_\_\_\_

B. Rec. \_\_\_\_\_ flz. *pp* \_\_\_\_\_ ord. into multiphonics

Perc. \_\_\_\_\_ finger friction roll on drum skin (moaning sound) *f*

Lute \_\_\_\_\_ *pp* \_\_\_\_\_ *p*

Th. \_\_\_\_\_ *mf* \_\_\_\_\_ *p*

Hpschd. (keep fingerped.) \_\_\_\_\_ 4' OFF, 8' ON \_\_\_\_\_ Coupler ON

CTen. \_\_\_\_\_ *mp* chest voice \_\_\_\_\_

skrur seg til ov - er djup - na \_\_\_\_\_ i år - ets mørk - ast - e døg - er \_\_\_\_\_  
 locks it - self ov - er the deep \_\_\_\_\_ in the dark - est night of the year \_\_\_\_\_  
 mørk - ast - e døg - er \_\_\_\_\_  
 dark - est \_\_\_\_\_ of the year \_\_\_\_\_

Vln. I \_\_\_\_\_ *pp* sempre \_\_\_\_\_ ord. \_\_\_\_\_ (non cresc.)

Vln. II \_\_\_\_\_ *pp* sempre \_\_\_\_\_ ord. \_\_\_\_\_ (non cresc.)

Vla. \_\_\_\_\_ *pp* sempre \_\_\_\_\_ ord. \_\_\_\_\_ (non cresc.)

Vc. \_\_\_\_\_ *pp* sempre \_\_\_\_\_ ord. \_\_\_\_\_

D.B. \_\_\_\_\_ *mp* \_\_\_\_\_ 3 \_\_\_\_\_ *pp* \_\_\_\_\_ *ff*

Interlude 12  
Senza misura \*

325

Trav. *mp* multiphonics ad lib.

B. Rec. *ff* rough sound rim shot *sffz* *mf* *sffz*

Perc. *ff* snap string *sffz* rapidly rhythms ad lib. *mp* *sffz* (come sopra) *mf* improvise w. Cello/D.B. *sffz*

Lute *sffz* snap string *sffz* *ff* *crudo* l.v. all

Th. *sffz* snap string *sffz* *ff* *crudo* l.v. all

Hpschd. *sub* *crudo* (8<sup>vb</sup>) improvise wildly on lowest octave *sfz* black & white cluster (one attack only) *sfz* *sfz*

Vln. I *Senza misura \** *sffz* (bartok pizz.) *sffz* *sffz* ord. rapidly improvise wildly on lowest octave *ff* *crudo* crush

Vln. II *sffz* (bartok pizz.) *sffz* *sffz* ord. rapidly improvise wildly on lowest octave *ff* *crudo* crush

Vla. *sffz* (bartok pizz.) *sffz* *sffz* rapidly improvise wildly on lowest octave *ff* *crudo* crush

Vc. *sffz* (bartok pizz.) *sffz* *ff* *crudo* ord. rapidly improvise wildly on lowest octave pitch ad lib. (develope given pitches) crush

D.B. *sffz* (bartok pizz.) *sffz* *ff* *crudo* ord. rapidly improvise wildly on lowest octave pitch ad lib. (develope given pitches) crush

\*approximately 10 sec. on each bar  
but keep unequal length (organical change of bars)

Y (rough sound)

Trav.  $\text{sfz}$  ②  $\text{ffz}$  ③ ord.  $f^{\text{secco}}$  ④ ⑤  $mp$  multiphonics

B. Rec.  $mf$   $f^{\text{secco}}$

Perc. Frame Drum rapidly 3 impr. w. Vln./Vla  $mp$   $\text{sfz}$   $p$   $\text{sfz}$   $\text{sfz}$

Lute  $ff$  l.v. all (snap string)  $\text{sfz}$

Th.  $ff$  l.v. all (snap string)  $\text{sfz}$

Hpschd. Coupler OFF 6 l.v. 6 l.v. 6 l.v. rapidly ad lib. impro (quasi dodecaphonic)

Vln. I pitch ad lib., develop given pitches ② impro (quasi dodecaphonic) ③ rapidly  $ff$  rapidly ad lib.  $mp$  ④ ⑤ crush

Vln. II rapidly  $ff$  rapidly ad lib. impro (quasi dodecaphonic)  $ff$

Vla. pitch ad lib., develop given pitches crush rapidly rapidly  $mp$  rapidly ad lib. impro (quasi dodecaphonic)  $ff$  secco, no sync.

Vc. ord. impro (quasi dodecaphonic) gradually wider span of intervals rapidly ad lib. secco, no sync. crush

D.B. rapidly ad lib. ord. impro (quasi dodecaphonic) secco, no sync.

Trav. *sfz* voice a

B. Rec. *p* *mf* *p* *mf*

Perc. Tambourine *sfz* rapidly ad lib. *sfz* *ff* rim shot *ff* *secco* impro ad lib. (L.k. tr./Tamb./Fr. Dr.)

Lute *ff* *secco* rapidly ad lib. impro (quasi dodecaphonic) (repeat ad lib.) *crudo* l.v. all *ffz*

Th. *ff* *secco* rapidly ad lib. impro (quasi dodecaphonic) (repeat ad lib.) *crudo* l.v. all *ffz*

Hpschd. Coupler ON rapidly *ffz* low clusters ad lib. vary rhythm

Vln. I *sfz* behind bridge shimmering *pp* TACET *sfz* crush

Vln. II *sfz* behind bridge shimmering *pp* TACET *f* crush

Vla. crush behind bridge shimmering *pp* TACET *f* crush

Vc. *sfz* crush ord. *mf* crush *f*

D.B. crush *p* *f* *ff*

A1 Misurata (♩ = c. 120)

♩ → ♩ (♩ = c. 60)

Trav. *ord.* *ff* *f* *mp* *f* *mp* *f* *mp*

B. Rec. *ff* *n* *labial gliss.*

Perc. (tamb.) *mp* *n*

Lute *ffz* *p* *l.v.* *sul pont.*

Th. *ffz* *p* *l.v.* *sul pont.*

Hpschd. CHANGE TO ORGAN

C.Ten. *mp*

Kva for to - nar spel - ar vo - na?  
 With what tones can hope be played? —

A1 Misurata (♩ = c. 120)

♩ → ♩ (♩ = c. 60)

Vln. I *ord., détaché* *ffz* *ff* *p sub.* *f* *p sub.* *mf* *p sub.* *pp sempre* *measured*

Vln. II *ord., détaché* *ffz* *ff* *p sub.* *f* *p sub.* *mf* *p sub.* *pp sempre* *measured*

Vla. *ord., détaché* *ffz* *ff* *p sub.* *f* *p sub.* *mf* *p sub.* *pp sempre* *measured*

Vc. *ord., détaché* *ffz* *ff* *p sub.* *f* *p sub.* *mf* *p sub.* *pp sempre* *measured*

D.B. *détaché* *ff* *p sub.* *f* *p sub.* *mf* *p sub.* *pp sempre* *measured*

346 B1 *rall.*

Trav. *mp* *labial bended* *ord.*

B. Rec. *mp* *f* *ppp* *mf*

Perc.

Lute *ord.* *sul pont.* *mf* *p*

Th.

Organ *ord.* *low/softer* *ord.* *R.H.* *L.H.*

Org. *all OFF n* *8' OFF* *8' ON* *8' HALF* *8' ON*

C.Ten. *ppp* *f* *mp* *mf*

Vln. I *mp* *B1*

Vln. II *mp* *II*

Vla. *mp* *(non gliss.)*

Vc. *mp*

D.B. *mp*

o \_\_\_\_\_ Vind - en virv - lar i ska - la - er \_\_\_\_\_ inn og ut av al - le to - ne - ar - tar så  
 Wind is whir - ling through re - gi - sters \_\_\_\_\_ in and out of all that can be sung \_\_\_\_\_ Your

Interlude 13  
Senza misura

352 **Meno mosso**

Trav. **Senza misura**

B. Rec. *p* \* lowered half tone by partly covering end of flute by foot

Perc. finger friction roll on drum skin (moaning sound) *mp*

Lute tamburo *mf* stroke w. side of thumb close to bridge on lowest strings

Th. tamburo *mf* stroke w. side of thumb close to bridge on lowest strings

Org. 8' ON 8' HALF 8' OFF 8' ON

C.Ten. du ears blir varm om øy - ra  
be - come so warm \_\_\_\_\_  
(hollow) à à à

Vln. I **Meno mosso** (non trem.) **Senza misura**

Vln. II (non trem.)

Vla. (non trem.)

Vc. (non trem.)

D.B. (non trem.)

voice gliss. (playing/singing creates vibrato) *n* *mf*

(come sopra) *n* *mf*

(come sopra) *n* *mf*

(come sopra) *n* *mf*

C1

2 ca. 3 sec. 3

*n* *mp* *mf* *ppp* *mf*



26th of December  
Misurata (♩ = c. 60)

D1

362

Trav.

B. Rec.

Perc.

Lute

Th.

Org.

CTen.

Den bren - de gra - na lik - nar ei kvit bein - grind — ei kvit bein - grind — mot den mør - ke bak - ken —  
 The burnt out spruce tree looks like a white ske - le - ton a white ske - le - ton against the darke - ning hill - side —

Misurata (♩ = c. 60)

D1

Vln. I

Vln. II

Vla.

Vc.

D.B.

(adjust dynamic to organ)

Interlude 14

370

Trav. *p* *mp dolce* *mp* *pp sub.*

B. Rec. *mp espr.* *pp* (blend w. strings) CHANGE TO VOICE FL.

Perc. **Frame Drum** *pp dolce* \* imitate heart beats (small change of rhythm) (optional soft mallet) \* pitch up by pressing skin w. finger (by the hand holding the drum)

Lute *mf* Freely \*glass on string gliss. \* make gliss-effect by using a glass (or a bottle neck) on string instead of L.H. fingers lowest string ----- highest string -----

Th. *mf* Freely \*glass on string gliss. start pitch as low as possible (by stretching up w. arm) lowest string ----- highest string -----

Org. Opt. no sound on low Db

CTen. ord. *mp* Eit nytt tre skal spi - re - born  
A new tree shall be born (w. traverso into organ)

Vln. I *pp* *pp*

Vln. II *p* (blend w. organ) *pp* *pp*

Vla. *pp*

Vc. *pp*

D.B. pizz. arco *mp* *pp*

29th of December

376

Trav. *mp*

Vce. Fl. *p* shadow Voc. *mf* *p* *mf* breathe if needed (9)

Perc. *(pp sempre)*

Lute 8 highest string

Th. 8 highest string

Org. L.H. *n* 8' OFF 8' ON 8' HALF 8' ON ord. low/softer ord.

C.Ten. *mp* *f* *mp* chest voice *mf*

Dag for dag på veg ut av mørk ret treng du ik - kje snu deg.  
 Day by day a way out of dark ness you don't have to turn 'round

Vln. I *pp* *mp*

Vln. II *pp* *mp*

Vla. *pp* *mp*

Vc. *pp* *mp* sul punto del arco

D.B. pizz. *mp* *p* *mf* *p* *mf*

Interlude 15  
Senza misura (2) improvise on given pitches

382  $\text{♩} \rightarrow \text{♩}$ . Tempo doppio (♩ = c. 120)

Trav. *mf* echoing Voc. *p*

Vce. Fl. *mf* *mf* *mf* *p*

Perc. Bird Whistle improvise keep calm "winter song" glass gliss (trem. medium rapidly)

Lute lowest string only *mp*

Th. start gliss on lowest reachable pitch *mf* (trem. medium rapidly) *p* lowest string only

Org. 4' (only) L.H. 4' HALF lower/softer

CTen. *f* *secco* 2.x TACET sing both x  
 gle - da følg - jer hakk i hæl følg - jer hakk i hæl hakk i hæl hæl  
 Joy is al - ways at your heel al - ways at your heel at your heel  
 gle - da følg - jer hakk i hæl hakk i hæl

Vln. I *mp* *pp* (highest)

Vln. II *mp* *pp* (highest)

Vla. *mp* *pp* (highest)

Vc. *mp* *pp* (highest)

D.B. 2.x L.H. pizz. (+) *mp* *pp* (highest)

31st of December  
Lento rubato (♩ = c. 58)

Trav. *p poss.*

Vce. Fl. *pp*

Perc. TACET

Lute (lowest string only) *highest string* *highest ad lib.* CHANGE TO GUITAR

Th. *highest ad lib.* *highest ad lib.*

Org. ord. 4' ON 4' HALF

CTen. *p* *pp* *mf marc.*

Vln. I *pp*

Vln. II *pp*

Vla. *pp*

Vc. *pp*

D.B. *pp* *mp* *pp*

No skin Shin - ing vin - ter - sol win - ter sun o - ver fjel - let. o a o-a å - - - a Ein svart ravn A ra - ven

*Lento rubato (♩ = c. 58)*

397

Trav.

Vce. Fl.

Perc.

Gtr.

Th.

Org.

C.Ten.

Vln. I

Vln. II

Vla.

Vc.

D.B.

**Medieval bell**  
(tuned to 440, sounding c# in 415)  
*pp*

**Guitar**  
*pp*

*pp* (*pp*)

*p* ord. ("blue" note) *pp* *p*

gliss.

4' OFF

**Morendo**

*lunga*

*lunga*

*lunga*

*lunga*

*lunga*

*lunga*

*lunga*

*lunga*

*lunga*

*lunga*

*pp*

stig i det blå  
soars in the blue

å a å-a å  
and

lik-nar ein dra-ke  
re-sembles a kite

fes-ta til han-da di  
tied to your lit-tle hand

*lunga*

*lunga*

*lunga*

*lunga*

*lunga*

*lunga*

*lunga*

*lunga*

*lunga*