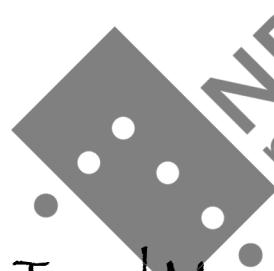


Lasse Thoresen:
(2024)

«Millom sol og botn»

For piccolo fløyte og klaver

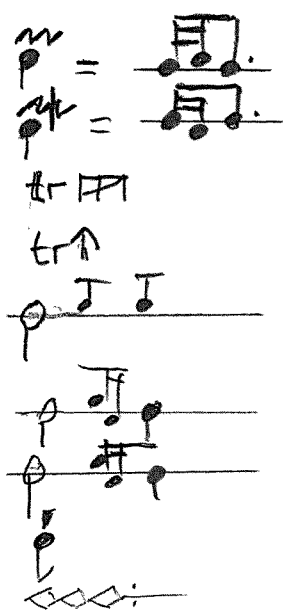
Dur: appr. 9'



This music is copyright protected

Bestilt av
Trond Magne Brekka og Trond Schau
med midler fra Norges Musikkhøgskole

TEGNFORKLARING



Ornamenter:

Pralltrille

Mordent

Ritarderende trille

Trille med svært lite intervall, nærmest vibrato

Sett inn forslagstonene, returner alltid til hovedtonen

Ornamentet settes inn i foregående noteverdi

Ornamentet settes inn i påfølgende noteverdi

Aksentuert staccato

Rask og pulserende cresc. og dim.

Mikrotonalitet:

Tonen senkes med 25-30 cent.

Tonen heves med 25-30 ct

Tonen heves med 100 minus ca. 30 ct. = ca 70 ct.

Tonen heves med 50 ct.

Tonen senkes med 100 + ca 30ct. = ca. 70 ct

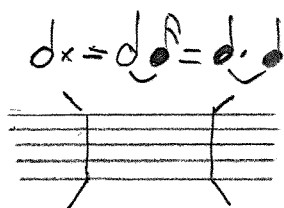
Tonen senkes med 50 ct.

Tonen heves med 150 ct

Tonen senkes med 150 ct



For øvrig:



Tonen forlenges med $\frac{1}{4}$ av foregående verdi

Opphør av metrisk notasjon; begynnelse av metrisk notasjon

Verkets tittel er tatt fra Olav Aukrusts dikt om vannliljen:

Tjønrosa

Det er grøtande, det er sårande
djupt seg røtande, fagre, dårande
kjenslur rive med rotom upp...

*Sjå ei tjønros på svarte votn
symja still millom sol og botn,
englefager med opna knupp:
kven vil tru, at innunder yndeleg
liljedrøymande jomfruro
kan i mar-dy og natt so syndeleg
seige tjønrose-roter gro!*

(Olav Aukrust. Tjønrosa fra Solrenning)

"MILLOM SOL OG BOTN"

Lasse Thoresen
(2024)

2: d. d. [d. 54]

2: d. 2: d. d. 2: d. d. 2: d. d.

mf

Sim.

Ped (sempre) b 2 x

2: d. 2: d. d. 2: d. 2: d. d.

2: d. 2: d. d. 2: d. d. 2: d. d.

b 2 x Ped ... b 2 x

mp

U.C.!

Ped con Ped

2: d. 2: d. d. 3: d. d. d.

dim.

f subito

k-bva

3/4 [265]

Handwritten musical score for the first system. It consists of three staves: a treble clef staff with a melodic line, a grand staff (treble and bass clefs) with piano accompaniment, and a bass clef staff with a bass line. The music is in 3/4 time. The first staff has various ornaments and slurs. The grand staff includes dynamic markings like *mf* and *Sim.* (Sostenuto). The bass staff has some notes marked with 'x' and 'L8va'.

Handwritten musical score for the second system. It consists of three staves. The top staff is a treble clef staff with a melodic line, featuring slurs and ornaments. The middle staff is a grand staff with piano accompaniment. The bottom staff is a bass clef staff with a bass line. The first staff has dynamic markings like *f* and *5:4*. The grand staff includes dynamic markings like *mf* and *Sim.* (Sostenuto). The bass staff has some notes marked with 'x' and 'L8va'.

Handwritten musical score for the third system. It consists of three staves. The top staff is a treble clef staff with a melodic line, featuring slurs and ornaments. The middle staff is a grand staff with piano accompaniment. The bottom staff is a bass clef staff with a bass line. The first staff has dynamic markings like *dim.* and *3/4*. The grand staff includes dynamic markings like *mf* and *Sim.* (Sostenuto). The bass staff has some notes marked with 'x' and 'L8va'.

Handwritten musical score for the fourth system. It consists of three staves. The top staff is a treble clef staff with a melodic line, featuring slurs and ornaments. The middle staff is a grand staff with piano accompaniment. The bottom staff is a bass clef staff with a bass line. The first staff has dynamic markings like *dim.* and *3/4*. The grand staff includes dynamic markings like *mf* and *Sim.* (Sostenuto). The bass staff has some notes marked with 'x' and 'L8va'.

3d. [≈54] 2d [≈45] 2d. [≈54]

p

pp

p

U.C. con Pes

Pes

2d. d.

5 6 7

5 6 7

5 6 7

5 6 7

Pes

2d [≈8]

f

3 3 3

tr

Pes

(Ped.)

U.C. 25

3d d d

3 3 3

3 3 3

mp

f

♩. 854 (Meno mosso)

dim. \leftarrow p

trava --

dim

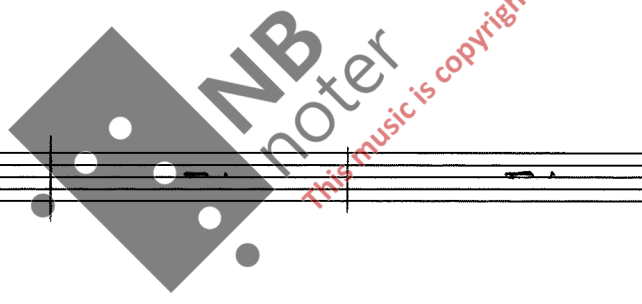
pp (vague asynchronous)

uc Ped

mf

mf

con Ped



2d.

p

L 5:6 L 5:6

L 5

Ped ---

espressivo, liberamente

pp mp ppp

Colla parte

ppp

Handwritten musical score, first system. Treble clef staff with notes, slurs, and trills. Piano accompaniment in grand staff with chords.

Handwritten musical score, second system. Treble clef staff with notes and slurs. Piano accompaniment in grand staff with chords and dynamics like *mp*.

(Ped)

Handwritten musical score, third system. Treble clef staff with triplets and slurs. Piano accompaniment in grand staff with chords and dynamics like *pp*. Includes a box labeled **(TC)**.

Handwritten musical score, fourth system. Treble clef staff with triplets and slurs. Piano accompaniment in grand staff with chords and dynamics like *ppp* and *mp*. Includes a box labeled **(UC)**.

Handwritten musical score system 1. Treble clef staff contains a melodic line with dynamics *p*, *pp*, and *ppp*. A slur labeled 'd' covers the first few notes. A trill is marked with 'tr' and '(a)'. The piano accompaniment consists of sustained chords in the left and right hands. Pedal markings include '(- Ped - -)' and an asterisk '*'. A fermata is present over a chord in the right hand.

Handwritten musical score system 2. Treble clef staff features a melodic line with dynamics *fp*, *f*, and *dim.*. The piano accompaniment includes chords and a triplet in the left hand. A box labeled 'TC' is written above the piano part. Pedal markings include 'Ped - -' and an asterisk '*'. A fermata is present over a chord in the right hand.

Handwritten musical score system 3. Treble clef staff has a melodic line with dynamics *pp* and *f*. A trill is marked with 'tr'. The piano accompaniment includes chords and a triplet in the left hand. Pedal markings include 'Ped' and 'Ped - -'. A fermata is present over a chord in the right hand. A tempo change is indicated as '2: d. d. [d. ~ 54]'.

Handwritten musical score system 4. Treble clef staff contains a melodic line with dynamics *p* and *sim.*. A triplet is marked with '3'. The piano accompaniment includes chords and a triplet in the left hand. Pedal markings include '(- Ped - -)'. A fermata is present over a chord in the right hand.

3: d. d. d

2: d. d

tr ↑

erese L3 J L3 J

mf cantabile

(sim.)

mf

tr ↑

tr ↑

L3 J

L4:3 J

7:6

hava Pres

(Ped.) - -

tr ↑

dim.

dim.

(Ped.) -

2: d. [≈ 162]

← d = d →

p

pp

pp

hava

* [uc]

(Ped.) -

- 8 -

4♩ *sim.* 3♩

mf sub. *f*

mf

Ped. --- *

4♩ *sim.*

f

(Ped) *

3♩

sfz *sim.* *f* *sfz* 4:3 4

Bra

sfz 4:3 4 *sfz* 4:3 4 *> mf*

Ped* Ped* con Ped

sim.

4:3 4 4:3 4 4:3 4

Bra

Handwritten musical score, first system. It consists of three staves: a single treble clef staff at the top, and a grand staff (treble and bass clefs) below. The music is in a key with one sharp (F#) and a 4/4 time signature. The first staff contains a melodic line with many slurs and ties. The grand staff contains a complex accompaniment with many chords and moving lines. There are some handwritten annotations like "2." at the end of the first staff and "tr" above the second staff.

Handwritten musical score, second system. It consists of three staves. The first staff has a treble clef and contains a melodic line with a wavy line above it and a "4." annotation. The second and third staves are a grand staff. There are dynamic markings "sfz" and "f". There are also annotations like "8va" and "con Ped" (con Pedal). A red watermark "NB noter" is visible across the system.

Handwritten musical score, third system. It consists of three staves. The first staff has a treble clef and contains a melodic line with a wavy line above it and a "5." annotation. The second and third staves are a grand staff. There are dynamic markings "f" and "p". There are also annotations like "8va". A red watermark "NB noter" is visible across the system.

Handwritten musical score, fourth system. It consists of three staves. The first staff has a treble clef and contains a melodic line with a wavy line above it and a "6." annotation. The second and third staves are a grand staff. There are dynamic markings "dim" and "mp". There are also annotations like "8va" and "Ped" (Pedal). A red watermark "NB noter" is visible across the system.

