

HENRIK WERGELAND

SKABELSEN



OG



MENNESKET

Skabelsen og

Mennesket

Af Henrik Wergeland (1830).

teksten utvalgt av Olav Anton Thommessen (2023).

En symfonisk oratorio i tre deler med prolog
for 5 solister, 2 kor, Rhapsode,
Stort Orkester og Orgel

Skabelsen og Mennesket

En symfonisk oratorio i tre deler med prolog
for 5 solister, 2 kor, Rhapsode, Stort Orkester og Orgel

Solister:

Ohebiel: Alt + 2 alt

Phun-Abiriel: Ten + 2 ten

Cajahel: Sop + 2 sop

Obaddon: Bas + 2 bas

SEMI-KOR: 8 sangere

Adam: Kontratenor

Messias: Rhapsode

HOVED-KOR: SATB

32 sangere

Stort Orkester:

Piccolo

2 Flutes

2 Oboes

English Horn

2 Clarinets

Bass Clarinet

2 Bassoons

Contrabassoon

4 Horns

3 Trumpets

2 Trombones

Bass Trombone

Tuba

4 Percussion

Timpani 4

Strings: Vln 1 divisi Vln 2 divisi

Violas Celli divisi

Contrabass Divisi (2 with c-extension)

Organ

pianoforte

harp

aw
Olav Antan Thomsen

RØDTVEITKROKEN 9/23 -

PROLOG:

RISOLUTO

Fl I II
Picc
OB I II
ENG HRN
KL I II
Bs KL
Fgt I II
KFgt
HRN
TRPT I II III
TRBN I II III
TUBA
Pfte
HARP
TIMP
SN DR
SUSP CMB
GONG
BS DR
VLN I
VLN II
VLA
CELLI
KB

MNB noter
This music is copyright protected

IN CENTER
TO 5 CHINESE TEMPLE

Handwritten musical score for a large ensemble. The score includes parts for woodwinds (Flute I & II, Piccolo, Oboe I & II, English Horn, Clarinet I & II, Bass Clarinet, Bassoon I & II, Contrabassoon), brass (Horn I, II, III, IV, Trumpet I, II, III, IV, Trombone I, II, III, Tuba), percussion (Percussion I, Gong, Bass Drum), strings (Violin I, Violin II, Viola, Cello, Double Bass), and vocalists (Soprano, Alto, Tenor, Bass). The score is written in a complex, handwritten style with various musical notations, including notes, rests, dynamics (e.g., *f*, *sf*), and articulation marks. A large watermark "MNB potter" is visible across the center of the page. The lyrics for the vocal parts are written below the vocal staves.

Lyrics for Soprano (S):
MEN - NE - SKE VAA
MEN - NE - SKE VAA
MEN - NE - SKE VAA
MEN - NE - SKE VAA

Lyrics for Alto (A):
MEN - NE - SKE VAA
MEN - NE - SKE VAA
MEN - NE - SKE VAA
MEN - NE - SKE VAA

Lyrics for Tenor (T):
MEN - NE - SKE VAA
MEN - NE - SKE VAA
MEN - NE - SKE VAA
MEN - NE - SKE VAA

Lyrics for Bass (B):
MEN - NE - SKE VAA
MEN - NE - SKE VAA
MEN - NE - SKE VAA
MEN - NE - SKE VAA

Lyrics for Percussion I (P1):
TO A Ton-Tone
rim

2

FL I II
 Picc
 OB I II
 ENGL HRN
 KL I II
 BS KL
 FGT I II
 KFGT
 HRN I II
 TRPT I II
 TRPT III
 S
 A
 T
 BAR
 BS
 HARPE
 SN DR
 SUSP GRM
 GONG
 BSW

*Handwritten musical score for a symphony orchestra and vocal soloists. The score includes staves for woodwinds, brass, strings, and percussion. The vocal parts (Soprano, Alto, Tenor, Bass) have lyrics in German: "f DEN TRO - FAS - TE SO VE - KKER DIG". The harp part is labeled "TO GLOCKENSPIEL (PP)". The score is marked with dynamics like *f*, *mp*, and *pp*, and includes various musical notations such as slurs, accents, and articulation marks.*

Tutti: pp PÅ DIN KØR-MIG STØ - L mp DIN HER-LI-GE HAL MED SKY-BAL-DA-CHI - N p DAA - REN PÅ

S
A
T
BASS

15
Tutti: SØY - LER AF MOR-GENS RU-BI - N OG AF - TE-NENS DU-ER AF RØ DEN KO -

S
A
T
BASS

4

FL I
FL II
Picc
OB I
OB II
ENG HRN
KL I
KL II
Bs KL
Fgt I
Fgt II
KFgt
HRN I
HRN II
TRPT I
TRPT II
TRPT III
TRPT IV

Tutti: - Ty - Ni - gen i DEN Ny - skab - te Jo - rd ME - ning og SJE - l i AL - mag - tens

S
A
T
Bar
Bs

Harpe
GLKSP
Sus Cym
Gong
BsDr

Fl I II
Picc
OB I II
ENG HRN
KL I II
Bs KL
FgT I II
KfgT
HRN I II III
TRPT I II III
TRON I II III

F.T. *all.*
F.T. *all.*
F.T. *all.*

p

Um: O — RD i VER-DEN, GUDS SPRO-g TIL SEg SE — LV DE(T) STE-RNE BE-SKREV-NE SOM

S
A
T
BAR
Bs

p *sub* *mp* *mf* *f*

HARPE
GLKSP
SUSP(LAND)
GONG
BsDr

SuParr
SuParr
SuParr II
SuTarr II

FL I II
Picc
OB I II
ENG HRN
KL I II
Bs KL
Fgt I II
KFGT
HRN I II
HRN III
TRPT I II
TRPT III
Robs I II

Soprano
Alto
Tenor
Bass
HARPE
GLXSP
SUSP (Cym)
GONG
BSPD

TO-NER FRA ZO-NER TIL ZO-NER FYR-DEN-DE HVÆL VE-NES HVÆ LV

♩.♩. 6/8 [35]

Ten

Pfte

8L

[40]

SI - DDER EN DRENG MED EN HAR - PE TI AF DETS STÆN - GE KUN - GE SOM

8L

[45]

VE - MORS KLO - KKE - R TI SOM HEL - VED

8L

GNIS - TREN - DE HVI - NE OG TRE - GAN - GE TI DER SKJÆL - VER AF

8L

[50]

HYM - NER, HALV HUN - DRE - DE STREN - GE ? DE ER STEL - LAS

8L



4

GYL - DNE KON-GE-RI-GER. JEG TIDT NØR - KE

55

T SY - NES STEL-LA AT SKIM - TE HØR - TE JEG STEL - LANS

60

LAT - TE - R SE ØY - NE - NES FRIS - KE IL - DE - R SE

65

KIN - DEN SOM GLIND - SER I MOR - GEN - RØ - DE - N

70

HVOR ER STEL - LA? SE, MIN HAR - PE MED EN DRUS - TEN STRENG!

1

75

FARR JEG DEN HEEL L-STE "DEN BRA-ST" VIL HUN

Handwritten musical score for system 75. The system consists of a vocal line on a single staff and a piano accompaniment on two staves. The vocal line begins with a treble clef and a key signature of one sharp (F#). The lyrics are "FARR JEG DEN HEEL L-STE 'DEN BRA-ST' VIL HUN". The piano accompaniment features a complex harmonic structure with many accidentals and dynamic markings.

80

SI-GE DEN E-NE, DEN BRUS-TNE DER STEL-AR MIG RE-KKER KNAE-LEN-DE FLE-TTER HUN

Handwritten musical score for system 80. The system consists of a vocal line on a single staff and a piano accompaniment on two staves. The vocal line begins with a treble clef and a key signature of one sharp (F#). The lyrics are "SI-GE DEN E-NE, DEN BRUS-TNE DER STEL-AR MIG RE-KKER KNAE-LEN-DE FLE-TTER HUN". The piano accompaniment features a complex harmonic structure with many accidentals and dynamic markings.

85

SELV DEN INN OG LE-EN-DE SI-SER HUN "KNAE-RE SE HER ER STRENGEN JEG

Handwritten musical score for system 85. The system consists of a vocal line on a single staff and a piano accompaniment on two staves. The vocal line begins with a treble clef and a key signature of one sharp (F#). The lyrics are "SELV DEN INN OG LE-EN-DE SI-SER HUN 'KNAE-RE SE HER ER STRENGEN JEG". The piano accompaniment features a complex harmonic structure with many accidentals and dynamic markings.

90

STA-L. JEG LØD MED MIN FANGT OG MED RAAB DU FOR FUL-STE MIN LE-GEN-DE FRAU-KTI

Handwritten musical score for system 90. The system consists of a vocal line on a single staff and a piano accompaniment on two staves. The vocal line begins with a treble clef and a key signature of one sharp (F#). The lyrics are "STA-L. JEG LØD MED MIN FANGT OG MED RAAB DU FOR FUL-STE MIN LE-GEN-DE FRAU-KTI". The piano accompaniment features a complex harmonic structure with many accidentals and dynamic markings.

95

P STILLE, EL-SKE-DE STILLE! MP SAA VIL-LE JEG AF-GRY-DE! JEG FANT JO DES

Handwritten musical score for system 95. The system consists of a vocal line on a single staff and a piano accompaniment on two staves. The vocal line begins with a treble clef and a key signature of one sharp (F#). The lyrics are "P STILLE, EL-SKE-DE STILLE! MP SAA VIL-LE JEG AF-GRY-DE! JEG FANT JO DES". The piano accompaniment features a complex harmonic structure with many accidentals and dynamic markings.

1

100 Rhapsode

TENOR

OG GREP DEG — MEL-LOR STJER-NE-NE

♩ = ♩ 4 Più Mosso

HVISKER: *mf*

HARPE *mf*

ORG

PED

105 Rhapsode

COLLA PARTE

AA TEMPO

HARPE

LENGA ARR. l.v.

ORG

PED

"EN GANG I SKADELSENS DAGE ET par af serafer sig søkte hjem i Adam og Evas slumrende hjerter: Begge i stamme fra Dem.

110 Rhapsode

AA TEMPO

HARPE

ORG

PED

Ak, men de kjendte da ikke hinanden; Kun ahne de kunne hinanden. Selv har den ene aand sig fra himlen forvist, men den anden oppofrende fulgte, selv oppoffren er himmelsk kjærlighets vesen, elskende aand til en aand.»

TEN

PFT

8

AN - DEN HER SEET SOM BO - ET I A - DAMS HSER - TE MIR VAN

110

LIQ - NE - T P OY - DEN SO - M DE - SKJE - LE - DE E - VAS...

115

STR - LLA JEG GJEN - KSEND - TE I DIG I DEN HER - LIQ - E!

Picc

Fk 1

Fk 2

Ob 1

E.H

Cl 1

TRP 1

HORN 1

2

3

4

FL I II
Picc
OB I II
ENG HRN
KL I II
Bs KL
Fgt I II
KFgt
HRN I II
TRPT I II
RORG I II
Tuba

mf jeg kvæder om himlens og jordens for BINDERSE

Soprano (S)
Tenor (T)
Mandorgel
Ped
Timp
Gong
Bs. Dr.

Handwritten musical score for strings and other instruments. The notation is dense with many notes and dynamic markings. A watermark 'NB noter' is visible across the page.

az b b+ b- b+ b-

FL I II
Picc
OB I II
ENG HRN
KL I II
Bs KL
Fgt I II
KFGT
HRN I II III
TRPT I II III
Tuba

Rh
Soprano
T
Man
ORGEL
PED

Glem ikke stjernene! Glem ikke blomsten! Glem ikke ormen i støvet!

Boca APERTA

mf GLEM

FL I
FL II
Picc
OB I
OB II
ENG HRN
KL I
KL II
Bs KL
Fgt I
Fgt II
KFGT
HRN I
HRN II
TRPT I
TRPT II
TRPT III
Raus
Tuba
Rh
Soprano
Tenor
Bass
MANN
ORGEL
PED
GONG

Ormen spinder sig rundom min fod udaf lyngen, Og reiser sig stolt som en drot, der sit

PIANOFORTE

This music is copyright protected

Handwritten markings on the right margin, possibly a page number or reference mark.

Rh | rige z beskuer. z. | 140

TEN

-SYN - GES, DA ANT KUN AF KJÆR-LIG-HED ER. AL - TET

MED TAL-LØ-SE TO - NER OM - BRU-SER Mig, JEG SY - NES AT DRUK - NE

PIANE

THI ANT-ET JEG VIL-LE SKI-LLE MEG FRA BRU-SER I GJEN-NOM MIN HAR-PE

HAARPE

155

SOM GJÆ - MNOM CHA - OS GJØ - DEN - DE PORT HVIR - VLER MIG BORT SOM ET

160

FL I II

Picc

OB I II

ENG HRN (TACET) OB

KL I II

Bs KL

Fgt I II

KFGT

HRN I II III

TRPT I II III

TRON I II

TUBA

TEN

PATE

HARPE

TIMP

GLKST

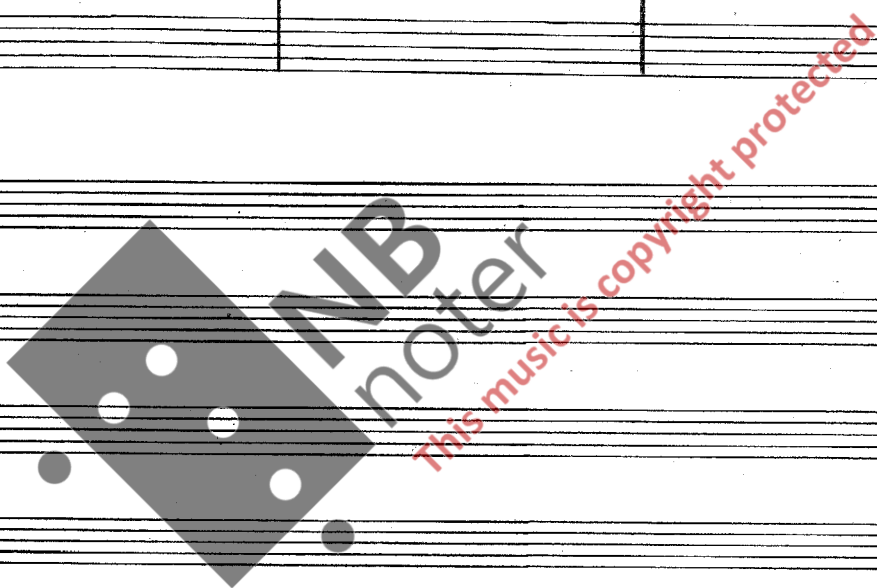
VIBR

Handwritten musical score for a full orchestra and vocal soloists. The score includes parts for Flute I & II, Piccolo, Oboe I & II, English Horn, Clarinet I & II, Bass Clarinet, Bassoon I & II, Contrabassoon, Horn I, II, III, Trumpet I, II, III, Trombone I, II, Tuba, Tenor, Percussion, Harp, Timpani, Glockenspiel, and Vibraphone. The score is marked with a tempo of 160. A large watermark 'NB noter' is overlaid on the page, along with the text 'This music is copyright protected'. The score is written in a complex, handwritten style with many annotations and dynamic markings.

FL I
FL II
OB I
OB II
KL I
Bs KL
Fgt I
Fgt II
KFGT
HRN I
HRN II
TRPT I
TRPT II
TRPT III
TRPT IV
TUBA

STRAIGHT MUTE

STRAIGHT MUTE



Timi
GLKST
VIBR
SNDY

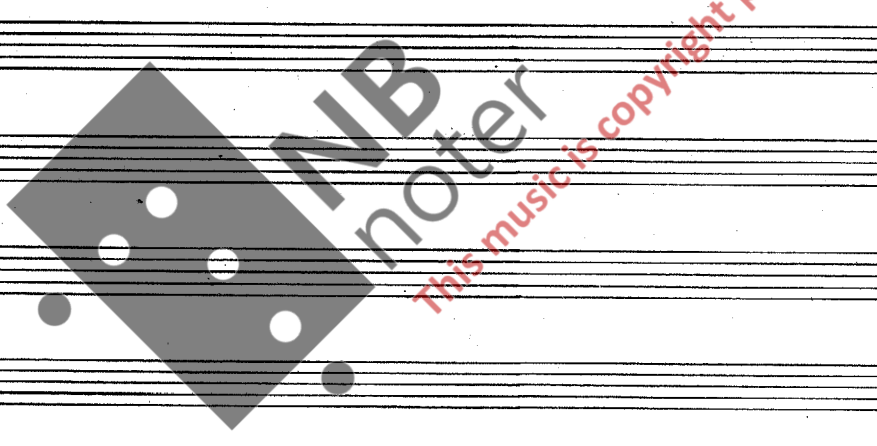
2

170

FL I II
 Picc
 OB I II
 ENG HRN
 KL I II
 BSKL
 FGT I
 II FGT
 HRN I II III
 TRPT I II III
 TRBN I II
 TUBA

TIMP
 GLKSD
 VIBR
 S N D V
 B S D V

To CHIMES



FL I II
Picc
OB I II
ENG HRN
KL I II
Bs KL
Fgt I II
KFGT
HRN I II
TRPT I II
TRPT III
TRBN I II
TUBA
Main Choir
S
A
TEN
Bar
Bs
CHIMES
VIBR
SNDr
BsdR

Handwritten musical score for a large ensemble. The score includes parts for woodwinds (Flute, Piccolo, Oboe, English Horn, Clarinet, Bass Clarinet, Bassoon, Contrabassoon), brass (Horn, Trumpet, Trombone, Tuba), choir (Soprano, Alto, Tenor, Baritone/Bass), and percussion (Chimes, Vibraphone, Snare Drum, Bass Drum). The music is in 2/4 time and features complex rhythmic patterns, including triplets and syncopation. A large watermark 'MB noter' is overlaid on the page. The score concludes with the instruction 'To Gong' and 'U.S.N.O.R. STICKS'.

2
2

J. = $\frac{4}{4}$

180

$\frac{3}{4}$

4
4

FL I II
Picc
OB I II
ENG HRN
KL I II
Bs KL
Fgt I II
KFGT

HRN I II III
TRPT I II III
TRBN I II
TUBA

S
A
T
BAR
Bs

VAA (GN) GN!

LA DIN FOR NU LA DIN FOR NU FT BAK-GE I
LA DIN FOR NU FT BAK-GE I

TIMP
CHIMES
VIBR
GONG
B&Dr

4
4

2
3

185

4/4

SOP I
HJER - TETS BLOM - STER

SOP II
HJER - TETS BLOM - STER DUFT SOM SO - LEN DER BLAN - DER MED REGN - BU - E

ALT I
HJER - TETS BLOM - STER

ALT II
HJER - TETS BLOM - STER DUFT SOM SO - LEN DER BLAN - DER MED REGN - BU - E

190

SOP I

SOP II
DUNST SITT SKIN, — OG SKJÆN - KER MED DUG - MOR - GEN VEL - LUGT OM AF - TEN

ALT I

ALT II
DUNST SITT SKIN, — OG SKJÆN - KER MED DUG - MOR - GEN VEL - LUGT OM AF - TEN

FL I II
 Picc
 OB I II
 ENG HRN
 KL I II
 BS KL
 FGT I II
 KFQT
 HRN I II
 TRPT I II
 TRPT III
 TUBA
 S
 A
 T
 BAR
 BS
 HARPE
 CHIMES
 VIBR

Handwritten musical score for a full orchestra and vocal soloists. The score includes parts for Flute I & II, Piccolo, Oboe I & II, English Horn, Clarinet I & II, Bass Clarinet, Bassoon I & II, Cor Anglais, Horn I & II, Trumpet I & II, Trombone I & II, Tuba, Soprano, Alto, Tenor, Baritone, Bass, Harp, Chimes, and Vibraphone. The vocal parts have lyrics "E(N) - N". The score is written in a 4/4 time signature with a key signature of one sharp (F#). A large watermark "INB noter" and "This music is copyright protected" is overlaid on the score.

512

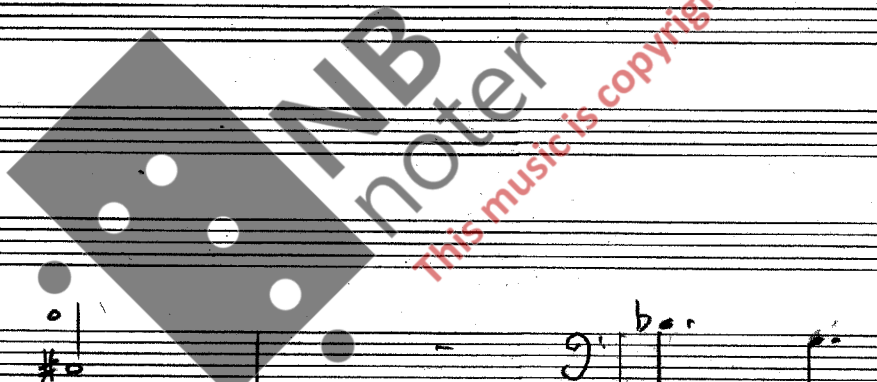
FL I II
Picc
OB I II
ENG HRN
KL I II
Bs KL
Fgt I II
KFgt
HRN I II
TRPT I II
TRON I II
LOAF

Handwritten musical score for woodwinds and brass instruments. The staves are labeled: FL I II, Picc, OB I II, ENG HRN, KL I II, Bs KL, Fgt I II, KFgt, HRN I II, TRPT I II, TRON I II, and LOAF. The music includes various notes, rests, and dynamic markings such as *f*, *mf*, and *pp*. There are also some performance instructions like *arco* and *rit.*

HARPE
TIMP
CHINES
VIBR

Handwritten musical score for Harp, Timpani, Chinese Cymbals, and Vibraphone. The staves are labeled: HARPE, TIMP, CHINES, and VIBR. The music includes notes, rests, and dynamic markings such as *f* and *mf*. There are also some performance instructions like *arco* and *rit.*

Handwritten musical score for strings. The staves are labeled with *pizz* (pizzicato) and *arco* (arco). The music includes notes, rests, and dynamic markings such as *mf*, *f*, and *sf*. There are also some performance instructions like *rit.* and *arco*.



2
6

FL I
II

Picc

OB I
II

ENG HRN

KL I
II

Bs KL

Fgt I
II

KFGT

HRN I
II
III

TRPT I
II
III

Tuba

S

A

T

Bass

BS

Harp

Temp

Cym

Vibr

BsDr

CUIVRE

CUIVRE f

ar

voilà

sf

HE RSK O-VER DY RET OF A CT

HE RSK O-VER JOR-DEN! VE-R BE

HE RSK O-VER JOR-DEN! VE-R BE

H- RSK O-VER JOR-DEN! VE-R BE

arco

II v

PP III v

III PP v

IV PP v

IV PP v

PP

Handwritten notes and musical notation for various instruments and voices, including dynamics like *f*, *pp*, *arco*, and performance markings like *voilà* and *sf*.

Handwritten watermark: "This music is copyright protected"

Handwritten number: 27

Fl I II
Picc
OB I II
ENG HRN
KL I II
Bs KL
Fgt I II
KFgt
HRN I II
HRN III
TRPT I II
TRPT III
TRON I II
TUBA

S
A
T
BAR
BS
TIMP

Tyd-nin-gen i dette ord i ver-den
-tro-nin-gen i det-te ord i ver-den
TYD-NIN-GEN ORD I VER-DEN

mf GUDS SPROG I VER-DEN
mf GUDS SPROG I VER-DEN
mf GUDS

mp i VER-DEN, GUDS
mp i VER-DEN, GUDS
mp i VER-DEN, GUDS

SPROG TIL SIS SE - LV
SE - LV
SPROG TIL SIS SE - LV

pp GUDS SPROG TIL SIG-
pp GUDS SPROG TIL SIG-
pp GUDS SPROG TIL SIG-

BAR: GUDS SPROG TIL SIG-
BAR: GUDS SPROG TIL SIG-

pp GUDS SPROG TIL SIG-
pp GUDS SPROG TIL SIG-

Tutti Archi con Sordini

espr. v
mp
div^{mp}

28

FL I II

Picc

OB I II

ENG HRN

KL I II

Bs KL

Fgt I II

KFGT

HRN I II III

TRPT I II III

TRP I II III

S

A

T

BAR

DS

HQR

SND

INB noter
This music is copyright protected

22

FL I
FL II
Picc
OB I
OB II
ENG HRN
KL I
KL II
BS KL
Fgt I
Fgt II
KFGT
HRN I
HRN II
TRPT I
TRPT II
TRPT III
TRPT IV
TUBA I
TUBA II
TUBA III
S
A
T
BAR
BS
HARPE
CHIMES
VIBR
SN DR
BS DR

Handwritten musical score for a full orchestra and vocal soloists. The score includes parts for Flutes, Piccolo, Oboes, English Horn, Clarinets, Bass Clarinet, Bassoon, Trumpets, Trombones, Tubas, Soprano, Alto, Tenor, Baritone, Bass, Harp, Chimes, Vibraphone, Snare Drum, and Bass Drum. The vocal parts (Soprano, Alto, Tenor, Baritone, Bass) have lyrics "HE (A)", "RSK", and "HE". The score features complex rhythmic patterns, including triplets and sixteenth notes, and dynamic markings such as "f" and "pp". A large watermark "NB noter" is visible across the center of the page.

RITARD MENO MOSSO

FL I
FL II
Picc
OB I
OB II
ENG HRN
KL I
KL II
Bs KL
Fgt I
Fgt II
KFGT

HRN I
HRN II
TRPT I
TRPT II
TRONB I
TRONB II
TUBA

Soprano
Alto
Tenor
Bass

RSK O-VER DY-RE-NE ODET FOR-STE DY-RET
 - RSK O-VER DY-RE-NE ODET FOR-STE DY-RET
 - RSK O-VER DY-RE-NE ODET FOR-STE DY-RET
 - RSK O-VER DY-RE-NE ODET FOR-STE DY-RET

DRUMS
PFL
GONG
Bsdv

Handwritten musical notation for the lower section of the score, including various notes, rests, and dynamic markings.



FL I II

Picc

OB I II

ENG HRN

KL I II

Bs KL

Fgt I II

KFGT

HRN I II III

TRP I II III

Tromb I II III

TUBA

RHAPS.

Pfte

HARP

TO GLOCKENSPIEL

TO SUSP CYMB.

SENZA MISURA

$\frac{3}{4}$ MENO MOSSO RITARD 235

FL I II
Picc
OB I II
ENG HRN
KL I II
Bs KL
Fgt I II
KFGT
HRN I II
TRPT I II III
TRON I II III
RHAPS. Og Mennesket som De himmelske vorden.
Pfte
HARR
TIMP
SUSP CMB
GONG
BSDr

CON LA PARTE

MENO MOSSO RITARD

l.v.
sempre l.v.
p. (poss)
p. poco
pp