

Kari Beate Tandberg (2019)

# Tsudoi (III)

つどい

...komme sammen, danne fellesskap, samhandle...  
...come together, gathering, interact...

version (III) for flute, koto and guitar

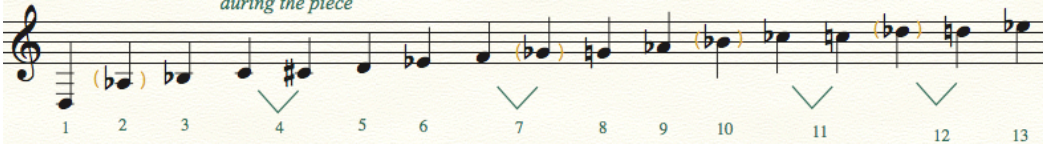
*First version - Japan April 14-20, 2019: Maiken Mathisen Schau; flute, Chieko Iwasaki; koto, Sarah Pagé; harp*  
*Version II - Sarpsborg and Asker/Norway November 4-5, 2020: Maiken M. Schau; flute, Daniel Dalnoki; violin, Bendik Foss; viola*  
*Version III - Japan March 26 and 28, 2025: Mariann Aarum; flute, Chieko Iwasaki; koto, Gjermund Titlestad; guitar*

## Notation/techniques

**Tsudoi** may be understood in english as coming together, gathering or interact to each other. This piece is a musical interaction between three instruments representing different cultural traditions; modern flute, koto and harp (harpicle/celtic-).

**Koto - tuning** Due to the harpsicle tuning, this piece is noted in 3 flats. In the Koto-tuning overview, however, each note is noted with their individual key.

\*) transposition of string made during the piece



**Koto - notation**

Left hand techniques:

- Oshid** (pressing technique)
- Oshi-hanashi** (Pre-pressing release technique)
- Tsuki-iro** (quick pressing technique)
- Yuri** (Vibrato)
- Bartok pizz** (left hand)

Right hand techniques:

- Awasezume** (playing together)
- Kakite** (Adjacent string plucking)
- Tremolo**
- Chirashizume** (sipping plectra)

**Uchikaki** (plectrum strike/scrape)

**Arpeggio** (Glissando across the strings)

Arrow showing the direction of the arp.


## Flute-instructions

### References

All fingerings referring to Pierre-Yves Artauds: Flûtes au présent. G. Billiaudot 1995

left hand	right hand
2 3 4 5	2 3 4
1b 1	C A B 5 5#

5 = D sharp  
5# = low D flat  
5♭ = Low C



**General** This piece is possible to play with C-flute only. However in bar 34-53 and 112-121 the flutist may switch into playing the piccolo.

**Bend** Gradually gliss 1/2 step (down)

**Bisbigliandi** (timbral trill)  
Always trill with the clef within the parantesis  
Also in combination with bend

**Gliss/bend up and down** continuously

**Aolean sound** (S) Only breath is audible

**Gliss/bend up and down** from given note

**FZ** Flutter tongue

**Jet-whistle**

**Tongue ram** (TR) Showing fingering and sound

**Tongue pizz** and **Tongue click** in combination (TK)

## Guitar-instructions

**Arpeggio** (arp.) FAST, SLOW or MEDIUM (MED.) Different directions: up or down

**Tremolo** = z

**Gliss** along string (like a wind-sound)

**Mute** = ⊕

Score

# Tsudoi (III)

つどい

Kari Beate Tandberg  
2019

...komme sammen, danne fellesskap, samhandle...  
...come together, gathering, interact...

version for  
flute, koto and guitar

Flute  
(Altern. piccolo  
bar 34-53, 112-121)

♩ = 72

*mf* *p* *pp* *mp* *p*

bend

bisbigliando  
12345/ 45 (b)

bend flz

3

Koto

Yuri

Oshi-hanashi

↑

Classical Guitar

Tsudoi

Fl. (picc.)

8

mf

*Tsuki-iro*

mp

SLOW

B $\flat$ 11

arp.

mf

MED.

Cmmaj9

arp.

FAST

B $\flat$ 11

arp.

f

gliss/bend up and down

bend

bisbigl. 12 / 234(5)

3

mf

Koto

8

mp

mf

f

gliss FAST

Cl. Gtr.

8

mp

mf

f

Fl. (picc.)

15

mp

mf

mp

p

*Kakite*

bisbigl. 1234 / 2(3)45 (h)

3

mp

p

Koto

15

mf

mp

mp

mf

SLOW

Fm6add9

simile

Fm13

B $\flat$ m6

(tremolo)

Gm11

arp.

mf

mf

Cl. Gtr.

15

mf

mp

mf

mf

Oshide

Chirashizume

Oshi-hanashi

↑

⇌ ⇌ ⇌ ⇌ ⇌ ⇌ 6

simile

⇌ ⇌ 6 simile

Tsudoi

Fl. (picc.) *bisbigl.* 12 (4) / 2 5 *mp* *f* *mf* *bisbigl. 5* 1(2)34 / 234

Koto *mf* *f* *mf* *Oshi-hanashi* *Oshid* *Uchikaki*

Cl. Gtr. *f* *Bb6add9 ord.*

*bend* *gliss/bend up and down*

Fl. (picc.) *sfz* *fp* *sfz* *mf* *p* *f*

Koto *sfz* *ff* *pp* *Chirashizume* *simile* *Chirashizume* *gliss FAST*

Cl. Gtr. *FAST arp.* *Eb11* *Bb9 ord.* *f*

*This music is copyright protected*

Fl. (picc.)

29

*mp* *mf* *p*

Koto

29

*mf* *f* *p*

MED. B $\flat$ 13 arp.

Cl. Gtr.

Awasezume + gliss

simile

← → ← → ← → 3 3 simile

gliss SLOW

SLOW A $\flat$  maj9#11 arp.

Fl. (picc.)

33

*p*

Koto

33

L.V. *p*

Cl. Gtr.

*p*

Piccolo Alternatively continue playing C-flute

bend

Oshide

↑

Oshide

↑

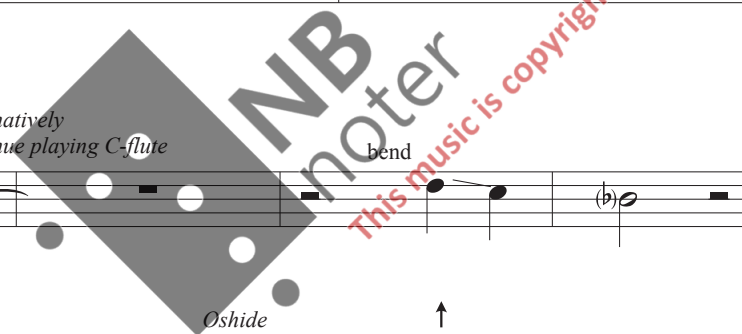
Oshide

↑

Kakite

(4) gliss.

simile



Tsudoi

40 *bisbigl.* 1(2)34 / 2345 *bend* *bend*

Fl. (picc.) *mf* *mp* *mfz*

Koto *mp* *mf* *Awasezume*

Cl. Gtr. SLOW arp. *Fm7* *Fm11* FAST arp. *A<sup>b</sup>maj7* SLOW arp. *Fm6* *D<sup>b</sup>* MED. arp. *A<sup>b</sup>maj9*

47 *f* *mp* *mf*

Fl. (picc.) *f* *mf*

Koto *f* *mf* *Tsuki-iro* *Oshi-hanashi*

Cl. Gtr. FAST C11 arp. *f* *F6* *(4) gliss. ord.* *Fm9* *A<sup>b</sup>maj7* *Fm11*

*This music is copyright protected*



Tsudoi

Flute in C

Fl. (picc.)

mp < mf < f > mf > f

non legato

3

3

3

3

Oshi-hanashi

Koto

mp > p

FAST Ebmaj11

arp.

(trill)

f

3 gliss.

mf

Cl. Gtr.

mp

f

bisbigliando

B 12345/45 (h)

f

bend

p

mp

Oshi-hanashi

Yuri

Oshide

Koto

mp

p

mp

pp

Cl. Gtr.

SLOW Eb

arp.

mp



Tsudoi

66

Fl. (picc.) *bisbigl. + bend* *bisbigl. + bend* *mf* *p* *mp* *mf* *mp* *mf*

Koto *p* *mp* *mf* *Oshi-hanashi* 7. string *Tsuki-iro* CI-CXII gliss along string (like a wind-sound)

Cl. Gtr.

70

Fl. (picc.) *gliss/bend up and down* *f* *pp* *mp* *bisbigl.* 1234 / 2345 (h) *bend*

Koto *mf* *p*

Cl. Gtr.

Tsudoi

**C** **Piu mosso**  
 ♩. = 88

jet whistle

jet whistle

Fl. (picc.)  
 Koto  
 Cl. Gtr.

*p p mf p mf p mf p*

74 ↑ ↑ *Oshide* ↑ ↑ (*Oshid*) ↑ ↑

simile

*mp*

gliss

FASTCmmaj9 arp.

*f*

Fl. (picc.)  
 Koto  
 Cl. Gtr.

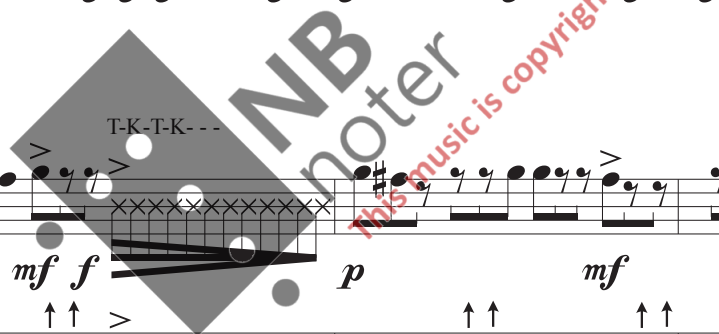
*p mf p mf f p mf p mf*

78 T-K-T-K- - -

TR (Tongue ram)

4 6

*mp*



Tsudoi

83 *simile* TR (Tongue ram) TR T-K-T-K-... TR *f* *mf* *mfz* Awasezume

83 *simile* ↑↑ (Oshid) ↑↑ Bartok-pizz (left hand) ○ *mfz*

Cl. Gtr. Striking the body of the instrument (2) (5) Bb13 *mfz*

87 TR jet whistle *mfz* *mf* *mfz* *p*

87 ↑↑ *mfz* ↑↑ *mfz* ↑↑ *mfz* ↑↑ *p* (6) (4) *p* simile

Cl. Gtr. Bb13 Bb13 Bb13 (b) *mfz* *mfz* *mfz* *p*

Tsudoi

jet whistle

T-K-T-K- - - T-KE —

Retune string 4 = C#  
7 = Gb (F#) 11 = Cb (B)

Fl. (picc.)

*cresc.*

*sfz* *mf* *p*

Koto

*cresc.*

*sfz* gliss

Cl. Gtr.

*sfz* FAST arp. Cmmaj9

Fl. (picc.)

*mp* *p*

*f* *sfz*

Koto

*mf* *f* *mf*

Cl. Gtr.

*mf* *f* *mf*

D ♩.=72

(String 11 = Cb)

T-K-T-K- - - TR

99 T-K-T-K- - -

Fl. (picc.) *f* *mp* *mf* *f* *sfz* *ff*

Koto *f* *mp* *cresc.* *poco a poco* *f*

Cl. Gtr. *f* *mf*

102 non legato non legato

Fl. (picc.) *mp* *mf* *cresc.*

Koto *mp* *mf* *cresc.*

Cl. Gtr. *mp* *mf* *cresc.*

T-K-T-K- - -

Tsudoi

Fl. (picc.) *non legato* **f** **ff** *sffz* **f** **mp** **p**

Koto **f** **ff**

Cl. Gtr. **f** **ff**

TR

T-K-T-K- - -

T-KE

S S S - - - - S

Retune string 4, 7 and 11 back to original

Fl. (picc.) **E** ♩ = 72 **Piccolo** *Alternatively continue playing C-flute* **pp**

Koto *Play with fingertips (pizz) not with tsume (plectra)* **p** *gliss* *simile* **mp**

Cl. Gtr. **p** **mp** **mf**

① ② ③ ⑥  
3 2 4 0 1

Tsudoi

Play 8va if played with C-flute

8va - - - - -

115

Fl. (picc.)

Koto

Cl. Gtr.

*mp* *mf* *mp* *p*

*p* *mf* *mp* *sub f*

CI-CXII Gm7 MED. C 11 C sus2sus4 SLOW arp. F 7sus4

play with tsume (plectra) 9

4 2

122 Coda ♩. = 72

Fl. (picc.)

Koto

Cl. Gtr.

*mp* *mf* *mp* *mf* *mp*

*mf* *mp* *mf* *mp* *mf* *cresc.* *f*

Flute in C



Fl. (picc.)  
127 *mf* *p* *sfz* *ff*

Koto  
127 *p* *ff* *sffz* *sffz*  
gliss ⊕ simile ⊕ sim.

Cl. Gtr.  
2 0 1 0 3 4 *mf* *p* *ff* *sffz* *sffz*  
CIII FAST Gm11 arp. ⊕ simile ⊕ sim.

MB noter  
This music is copyright protected