

**Kari Beate Tandberg**  
**2012**

# **Exposures**

for trombone and piano

SCORE

(dur.: ca 11:00)

Commissioned by Ny Musikk Østfold

First performance by Ingse Tvedt, trombone and Trond Schau, piano  
HøstRiss, Moss 27.10. 2012

Support from Norsk Kulturråd

Score

Pianist needs a plectrum and marking of special strings inside the instrument

# Exposures

for trombone and piano

Kari Beate Tandberg  
2012

\*) Start playing when the piano-resonance has softened making the trombone-sound come through

**Trombone 1**

$\text{♩} = 72$

$\text{♩} = 60$  *meno mosso*

**Piano**

$\text{♩} = 72$

**Inside the Piano**  
Plectrum-gliss crossing strings  
From lowest note to highest note.  
Start slowly, then accell. After several notes as continuous gliss as possible throughout

**Ord.**  $15^{ma}$  L.V.

*ff* *ffz*

*Red. 8<sup>vb</sup>* (keep ped. down)

**Tbn. 1**

*Accell. et rit.* *et gliss* *flz. et gliss*

*mp* *mf* *mf* *p* *mp* *mf* *f* *p*

**Pno.**

**Inside the Piano**  
Fingertip/nail-gliss crossing strings  
slowly

*p* L.V.

*(keep ped. down)* *(keep ped. down)*

*8<sup>vb</sup>*

# Exposures

11 *growing.....*

Tbn. 1

*(mp)*  $\bullet = 72$

Pno.

*(Coordinate with trombonist - don't start too early)*

*Inside the piano: Dampen strings with fingertip*  
*Play on keys*

16 *Con sord. HARMON*

Tbn. 1

*(grad. open)*  $\rightarrow$   $\circ$  *(grad. close)*

*Wa - wa* *start SLOW, accel., then ritard.*

*ord.*

*mf* *fp* *mp* *mf* *mp*

Pno.

16 L.V.

# Exposures

Tbn. 1

20

**A**

3

(grad.. open)

3

wide slide vibr.

et gliss

ord.

*mp* *mf* *mp* *fp*

Pno.

20

**Inside the Piano**

**A**

Fingertip/nail-gliss  
crossing strings  
(start SLOW, then accel.)

*mp*

Tbn. 1

24

Wa - wa  
start SLOW, accel.

rit. ----- a tempo

Senza sord.  
wide slide vibr.

ord.

flz.

*mf* *mp* *mf* *fp* *mf* *p*

Pno.

24

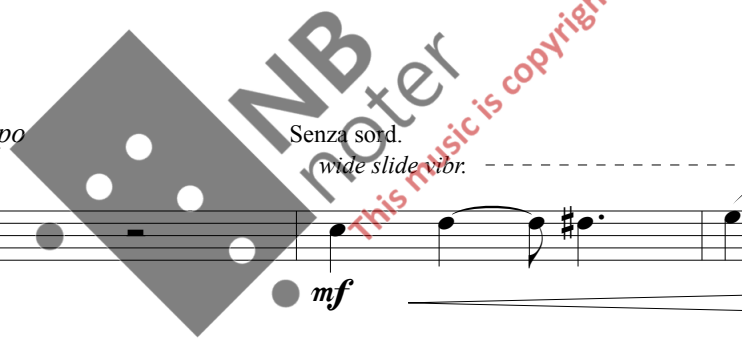
**Inside the Piano**

rit. a tempo

(start SLOW, then accel.)

Fingertip/nail-gliss  
crossing strings

*p*



# Exposures

Tbn. 1

29 *ord.* *f* *mf* *mf* *mp* *slide-tremolo et gliss start FAST then ritard.* *f* *p* *rit. non legato 3* *a tempo mf*

Pno.

29 *Inside the piano: Dampen string with fingertip to produce it's harmonic to octaves higher (flageolett).*  
*Play on keys*

29 *mp* *Ped.* *(keep ped. down)*

Tbn. 1

34 *Lip-trill grad. SLOW (ritard.)* *molto vibr et flz* *flz.* *Slide-tremolo, start Slow, accell., then ritard.* *et gliss*

*f* *mp* *mf* *p*

Pno.

34 **Inside the Piano** *Plectrum-gliss/fingernail CROSSING-STRINGS* *pp* *slowly*

34 **Inside the Piano** *Plectrum-gliss fast ALONG-STRING* *mf*

34 *8<sup>vb</sup>* *\* Ped.* *(keep ped. down)*

### Exposures

*Play into the open piano  
(resonance from piano-strings)*

Tbn. 1

39

*mf* *f* *fp < f* *mfp*

*non legato* 5

**Inside the Piano**

*Inside the piano:  
Dampen strings with flat hand*

**Ord.**

*Plectrum-gliss  
fast ALONG STRING*

*Play on keys*

*p*

Pno.

39

*f*

*p*

*g<sup>ub</sup>*  
*\* Led.*



**B**

Tbn. 1

*mf*

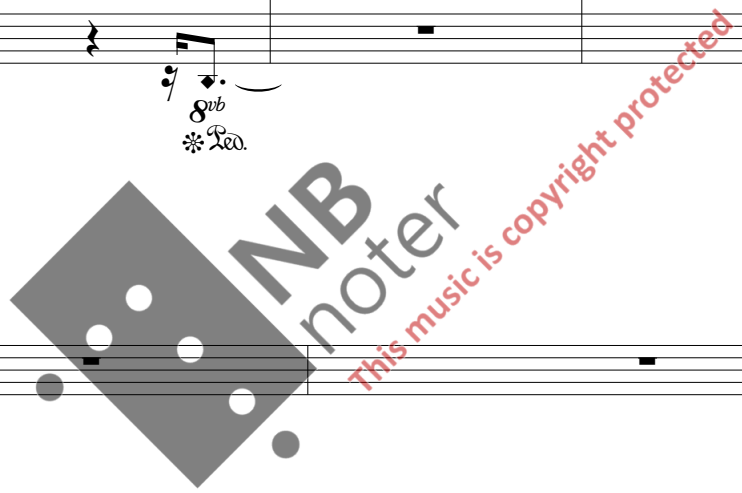
**B**

Pno.

44

*mp* *mp* *mf*

*\* Led.* *Led.* *\* Led.*



Exposures

Tbn. 1

Pno.

48

*mp*

*mf* *cresc.* *f* *dim.* *mp*

5

5

Leo.

Tbn. 1

Pno.

51

*mf* *fp* *mf* *p*

*slide-vibrato et gliss start Slow then accell.. et gliss*

**Inside the Piano**  
*Plectrum-gliss*  
**CROSSING STRINGS**  
*slowly*

5

\*

# Exposures

Tbn. 1

55 *non legato*

5 *fp* *mf* *mp*

*ord.* *et gliss* **C**

Con sord.  
HARMON *flz. et gliss* *mp*

Pno.

55 *mf* *mp*

**C** **Inside the Piano**

*Fingertip/nail-gliss  
crossing strings*  
*From lowest note to highest note.  
Soft and slow*

*Leg.* *Leg.* *15<sup>mb-</sup>*

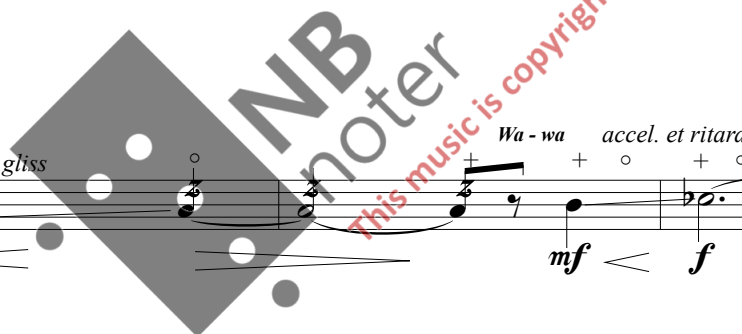
Tbn. 1

59 *mf* *flz. et gliss* *Wa - wa SLOW* *mf* *f* *flz. et gliss* *Wa - wa accel. et ritard.* *mf* *f*

*Leg.* *15<sup>ma</sup>* *L.V.*

Pno.

59 *p*







# Exposures

Tbn. 1

72

*mf*

Pno.

72 **Ord.**

*mf*

*f*

Ped. \* Ped. \* Ped. \* Ped.

Tbn. 1

74 *accel.*

*a tempo*  
*flz.*

*f*  
*a tempo*

Pno.

74 *accel.*

*mf*

*f*

*ff*

LH

*Silently press keys down*

*Sost. Ped.*

\* Ped. \* Ped. \* Ped. \* Ped. *Sost. Ped.*

Exposures

**D** ♩ = 120

Tbn. 1

**D** ♩ = 120

76 *Play on keys*  
*From lowest note to highest note.*  
*Use both hands together:*  
*RH: Gliss on black keys*  
*LH: Gliss on white keys*

76 *ff*

15<sup>ma</sup> L.V.

*p*

use 1/2-pedal up and down to soften the sound

81

Tbn. 1

81

81

3:4

*mp*

Exposures

Tbn. 1

E

*mp* *mf* *mp*

Pno.

84

*p* *mp*

\* Ped.

Tbn. 1

87

*gliss* *gliss*

3:4

*mf* *mp* *mf*

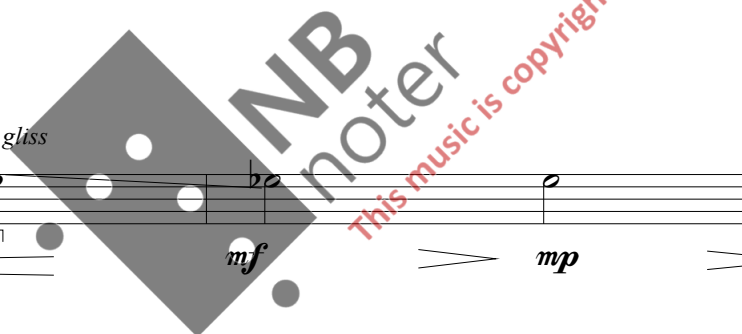
Pno.

87

9:12

*mf* *mp*

\* Ped.



Exposures

Tbn. 1

90

*mp* *mp* *mf*

Pno.

90

*mp* *mf* *mf* *pp*

\* Ped. u.c. \* Ped.

Tbn. 1

93

*mp* *mf* *mp* *mf*

Pno.

93

*mp* *mf* *pp*

senza u.c. \* Ped. \* Ped. u.c.

Exposures

Tbn. 1

97

*mp*

4

*p*

Pno.

97

*p*

*mp*

*pp*

97

*senza u.c.*

*u.c.*

*senza u.c.*

\* *ped.*

\* *ped.*

Tbn. 1

**F**

*\*) On ordinary piano quit highest note if necessary*

Pno.

100

*sub f*

*ff*

100

\* *ped.*

\* *ped.*

\* *ped.*

\* *ped.*

\* *ped.*

\* *ped.*

Exposures

Tbn. 1

103

*mp*

*p*

Pno.

103

*subp*

*3*

*3*

*3*

\* Ped.

\* Ped.

Tbn. 1

107

*mf*

*mp*

Pno.

107

*p*

*mp*

*3*

*3*

*3*

*8va*

*8va*

\* Ped.

\* Ped.

\* Ped.

\* Ped.

Exposures

**Tbn. 1**

$\text{♩} = 132$

*double towards single tongue*

*mp* *p*

**Pno.**

**G**  $\text{♩} = 132$

*mp* *p*

*\* Ped. simile* *\* Ped. simile*

**Tbn. 1**

*double towards single tongue*

*mf* *molto rit.*

**Pno.**

*mf* *molto rit.*

*\* Ped.*



Exposures

Tbn. 1

121  $\text{♩} = 112$  *meno mosso*

*mp*

Pno.

121 *p*

121 *p.*

\**Ad. simile*

Tbn. 1

126 (C.s.)

*p*

*mp*

*p*

Pno.

126 *mp*

126 *p.*

Exposures

Tbn. 1

131

*mp*

*p* *mp*

Pno.

131

*p*

\* *And. simile*

Tbn. 1

137

**H** ♩ = 120

Pno.

137

*f*

*piu mosso*

Exposures

Tbn. 1

143 (C.s.)

*mf*

Pno.

143

*mf*

Tbn. 1

148

*mp*

Senza sord.

slide-tremolo I - II. pos.

Pno.

148

*p*

\*Leo.

Exposures

Tbn. 1

153 *fr* *mp* *Wa - wa* start SLOW, accel., then ritard. **I** Con sord. PLUNGER *Slide-tremolo FAST* *mf* *f*

Pno.

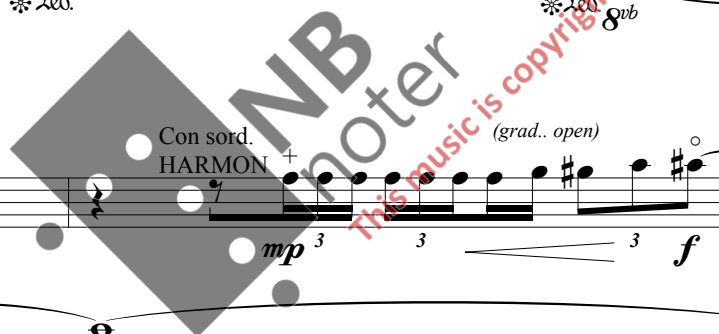
153 *mp* *sub ff* **I** *8va* *8vb* *\* Ped.* *\* Ped.* *\* Ped.* *\* Ped.* *\* Ped.* *8vb*

Tbn. 1

160 Con sord. HARMON (grad.. open) *mp* *f*

Pno.

160 *ff* *8va* *8vb*



Exposures

Tbn. 1

165 Senza sord.

*mp* > *p* *f* *p*

3 5 3

non legato

5

Pno.

165 *ff*

8<sup>va</sup>

8<sup>vb</sup>

Tbn. 1

169 non legato

7

*ppp*

8<sup>va</sup>

Pno.

169 *pp* *ppp*

8<sup>va</sup>

8<sup>vb</sup>

u.c. 8<sup>vb</sup> \*Led.

\*Led. 8<sup>vb</sup>

Exposures

Tbn. 1 J ♩ = 100

Pno. J ♩ = 100

174

174

(u.c.)  
(senza ped.)

Tbn. 1

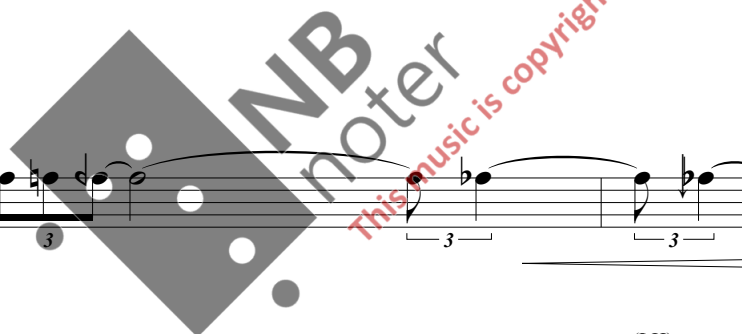
Pno.

178

178

*ped.*

*ped.*



Exposures

Tbn. 1

182

*p* *pp* *mp*

Pno.

182

*mp* *pp* *pp*

(LH) *8va* (LH) *8va* (LH) *8va*

u.c.

Tbn. 1

186

*mf* *mp*

Pno.

186

*p* *mp* *mf* *p*

*8va* *8va* *8va* *8va*

*Red.*

Exposures

Tbn. 1

190

Voice

ord.

Play *mf* *p*

**K**

Pno.

190

*pp*

Fingertip/nail-gliss crossing strings (start SLOW, then accel.)

*p*

**K**

*mp*

Tbn. 1

195

Voice

ord.

Play *mp* *mf* *mf*

*ped.* (keep pedal down)

*gliss*

Pno.

195

*pp*

*8va*

*5*

*\**



Exposures

Tbn. 1

201

*p*  $\rightrightarrows$  *mf* *Play*  $\rightrightarrows$  *mp* *mp*

Voice

3

4

Ord.

*mf*  
(Listen to trombone - don't start too early)

*Inside the piano:*  
Dampen strings with fingertip  
*Play on keys*

Pno.

201

201

Tbn. 1

206

*mf* *Play into the open piano* *mf*  $\rightrightarrows$  *mf*  $\rightrightarrows$  *mp*

3

5

*mf*

*Play into the open piano*

Pno.

206

206

(keep ped. down)

Exposures

Tbn. 1

212

*mp* *p* *mp* *Soft flz.*

Pno.

212

*Inside the piano: Dampen strings with fingertip*  
*Play on keys*

**Inside the Piano**

*Plectrum-gliss*  
*fast ALONG STRING*

*mf*

*(keep ped. down)*

*8vb*  
*\* Led.*

Tbn. 1

217

*Con sord. HARMON Wa - wa* *(grad. open)* *non legato* *rit. non legato*

*p* *mp* *pp*

**Inside the Piano**

*Fingertip/nail-gliss*  
*crossing strings* *Very soft*

*pp* *L.V.*

*8vb*  
*\* Led.*