

Kari Beate Tandberg

Den Membranøse Labyrint

for fiolin og piano



This music is copyright protected



Kari Beate Tandberg

Den Membranøse Labyrint

for fiolin og piano

(2024)

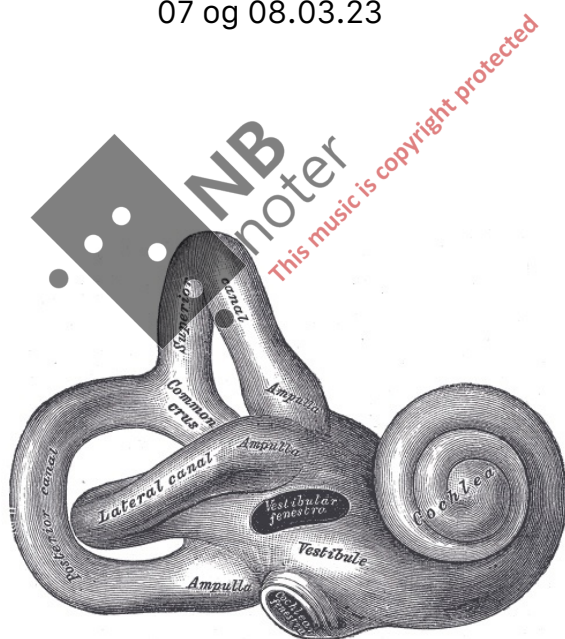
Støttet av Komponistenes vederlagsfond
og Det norske komponistfond

Ingvild Habbestad & Joachim Kwetzinsky

NyMusikk Vestfold, Horten

Asker Kulturhus - Venskaben

07 og 08.03.23



Den membranøse labyrint er et komplekst sett med sammenkoblede hulrom og kanaler som ligger i det indre øret .
Disse er fylt med væske og inneholder reseptorene for likevekt og hørsel.

*The membranous labyrinth is a collection of fluid filled tubes and chambers which contain the receptors for the senses
of equilibrium and hearing. It's complex and interconnected set is located in the inner ear.*

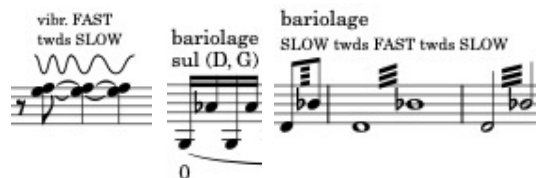
VERSJON februar 2024

Notation

Violin

Vibrato: - Grad. from FAST twds SLOW, - Oposite way, - Both ways, - Fast

Bariolage = Bowing technique: Rapid changing of strings, often between open and stopped string. (Two different notations)



Trill with thimbles: Apply a metal thimble to the index- and middle finger of the right hand. Make a continuous trill with your fingers up and down on strings at the fingerboard (jf. Crumb: Black Angels)



Trill with different interval

Gliss with thimbles: Slide along string (no trill)

Alla Chitarra 1: Hold the string instrument with your left hand in an upright position (like a cello). Use your right hand to make rapid rotation (tremolo) with right wrist as a shaking motion, and strike very fast alternately with your thumb and middle-, ring- and pinky-fingers against the strings up and down on the fingerboard.



Alla Chitarra 2: As for alla chitarra 1, however on back of instrument body from top to bottom, making a percussive sound.

Gliss et trem with light muted string



Gliss et trill

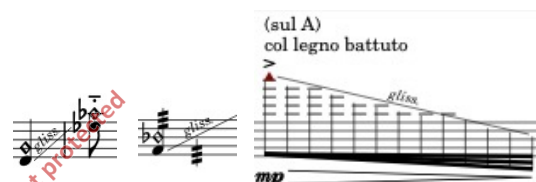
Highest possible pitch

"Flageolet-trill"

"Flageolet-gliss"

"Flageolet-gliss" et bow-tremolo

Col legno battuto

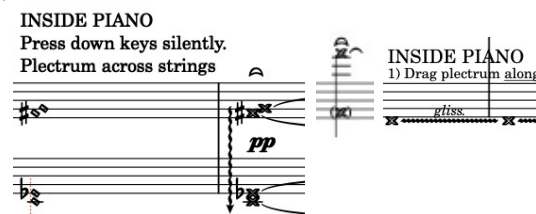


Piano

INSIDE PIANO:

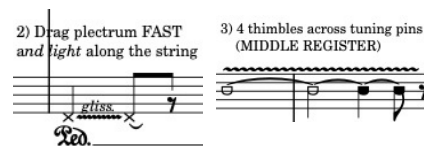
Arpeggio across all strings with plectrum* in the actual metal-frame space-room: Press down keys silently, press down Sostenuto-pedal (to keep the chosen strings free, and wipe with soft plectrum slow and lightly.

*) Alternatively use fingertips



Pizz with plectrum

- 1) Drag plectrum along string (SLOW and soft)
- 2) Drag plectrum along string (FAST and light)
- 3) Drag 4 thimble-capped fingers across tuning pins (deep-, middle- and high register)



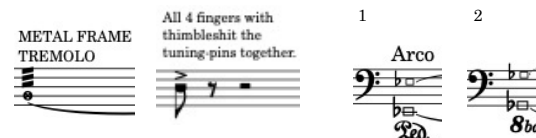
Metal-frame tremolo with thimble-capped fingers

Hit tuning pins together with thimble-capped fingers

2 strips of violin bow placed around specified strings.

Grasp each end of strip and gently pull back and forth to make sound.

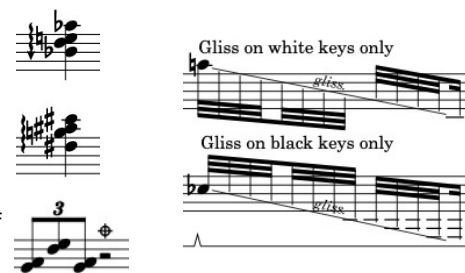
Tip: Place the strips before starting to play the piece.



ON KEYS

Arpeggio (ord) upwards, downwards or both (in each hand)!

Gliss black and white keys



Stop-sign (originally mute-sign, a circle with cross) is a reminder of lifting up the pedal in the pause, to make a sudden stop of the sustained sound.

Den Membranøse Labyrint

for fiolin and piano

♩ = 80 *Feel free* *sul A, D* *mp* *mf* *sul E, A* *vibr. FAST twds SLOW*

Violin

INSIDE PIANO
Press down keys silently. Plectrum across strings

Piano

Sost.

vibr. SLOW twds FAST

7 *sul A, D* *f* *p* *f* *mp* *sul D, G*

Vln

Pno

(Sost.)

12 *bariolage* *sul (D, G)* *p* *mp* *mf* *p*

Vln

ORD. *gva*

Pno

Red.

17

Vln *sul D, G*
vibr. FAST

mf *mp* *p*

Pno *mp* *p*

Red.

bariolage
SLOW twds FAST twds SLOW

22

Vln *sul E, A* *sul A, D*

mf *p* *mp* *mf*

Pno *mp* *mf*

Red.

INSIDE PIANO
pizz with plectrum

26

Vln *sul E, A* *vibrato*
FAST twds SLOW *sul A, D* *sul D, G*

f *mf* *mp*

Pno *mp*

Red.

31 sul G 3 3 3 sul tasto

Vln *p* *pp* *mp*

INSIDE PIANO
Press down keys silently.
Plectrum across strings

Pno *pp*
Sost.

34 sul D, A sul E, A ord. #2 sul E, A sul D, G

Vln *mf sub.* *mp* *f sub.* *mf* *mp* *p*

Pizz. *pp*

Pno (Sost.) *Red.*

40 sul E sul A 8va

Vln *p* *mp* *mf*

ORD. *p* *mp* *mf*

Pno (Red.) *Red.* *Red.* *Red.*

Den Membranøse Labyrint

61 *alla chitarra 2)*

Vln *mf* *gliss.* *fr* *mf* *gliss.*

Pno 3) Drag 4 thimbles across tuning pins (MIDDLE REGISTER) *mf* METAL FRAME TREMOLO

p
Red.

66 *sul G*
Gliss et trem, light muted string sul pont.

Vln *sfz* *arco* *mp* *fr*

Pno 4 thimbles; hit the tuning-pins together *sfz* METAL FRAME TREMOLO *Thimbles off*

p
Red.

B ♩ = 84

70 *fr* *mf* *pp* *p* *fr*

Pno ORD. *pp* *Red.*

73 *sul E, A bariolage* *fr* *mp* *pp* *fr* *(bariolage)*

Pno *8va* *Red.*

84

Vln

bariolage sul D, G

5

3

3

mf

mp

INSIDE PIANO
Press down keys silently. Plectrum across strings

Pno

Sost.

86

Vln

p

Pno

(Sost.)

88

Vln

pp

pizz.

(altern. string)

Sost.

Red.

91 C

Vln *pp* *mp*

ORD.

Pno *pp* *p* *mp*

Red.

94

Vln *p* *mp* *mf*

Pno *p* *mp*

(Red.)

Red.

97

Vln *f*

Pno *mf* *f*

6/16

100

Vln

Pno

p

pp

Red.

104

Vln

Pno

mp

p

Red.

106

Vln

Pno

pp

pp

Red.

8va

108

ord. 3 3 3 3

Vln *pp*

Pno *pp*

109

Vln *p* *mp*

Pno *p*

110

Vln *mf*

Pno *mp*

111

Vln *f*

Pno *mf* *f*

tr

Red.

Den Membranøse Labyrint

Vln

112

tr

b

tr

mp

Pno

mp

3

3

l.v.

(Led.)

Led.

Vln

115

sul E, A

p

Pno

(Led.)

Vln

119

mp

mf

sul D, G

sul E, A

sul A, D

sul E, A

Pno

mp

INSIDE PIANO

Drag strip of violin-bow under piano string(s). Choose one of the given strings depending on instrument.

Arco

mf

simile

(Led.)

Led.

125 *pp* sul tasto sul A, D sul D, G sul E, A

129 *mp* ord. sul A, D sul D, G *mf*

mp simile
(Alternative string)
8va.
Red.

132 *mf* sul A, D *p* sul tasto sul E, A *pp*

(8)
(Red.)

136

Den Membranøse Labyrint

138 **D**

Vln

ORD.

mf *f* *sfz*

Pno

mf *f*

f *sfz*

139

Vln

ff *sfz* *ff*

Pno

ff

ff *sfz*

140

Vln

p

Pno

p

141

Vln

f *tr* *tr* *tr* *tr*

Pno

f *ff*

Red.

col legno battuto
sul E
gliss.
mf
mp
col legno battuto
p
(Red.)

arco
mf
mp
p
(Red.)

rit.....
tr
pp
(Red.)

148 **a tempo**

Vln

Pno

mf

f

Red.

151

Vln

Pno

Gliss on white keys only

8va

gliss.

Gliss on black keys only

f

Red.

153 **a tempo**

Vln

Pno

f

Red.

..... a tempo

Lightly touch to produce a flageolet-trill

et col legno

Vln

167

tr *gliss.* *arco* *gliss.*

pp *p* *mp* *mf* *pp*

INSIDE PIANO
Press down keys silently. Plectrum across strings

Pno

Sost.

Vln

173

G

3 *8va* *3* *8va*

p *mf*

ORD.

p *mp*

Pno

mp *mf*

Red.

Vln

177

3 *3* *3*

mp

Pno

p *mp*

179 sul A, D tasto

Vln

Pno

mp *pp* *mf* *pp*

181

Vln

Pno

f *ffz* *ffz*

sul E gliss. 8

(Led.)

184

Vln

Pno

mf *p* *mf*

8ba mf 8ba mf

rit.

187 sul pont. arco

Vln *mp* *mf*

Pno *mp* *mf* *f*

Red.

♩ = 80

ord. #

191 *pp*

INSIDE PIANO
Press down keys silently. Plectrum across strings

Pno *pp* Sost.

This music copyright protected

193

Vln

INSIDE PIANO
pizz with plectrum

Pno *8va* Sost. Red.