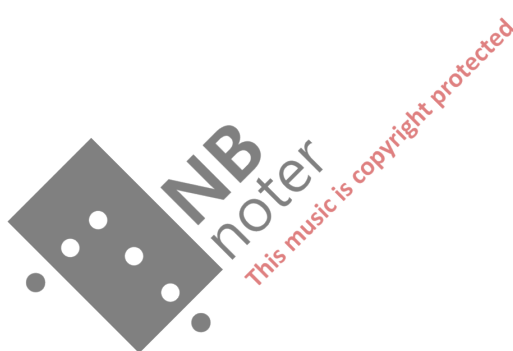


MAJ SØNSTEVOLD

Erindring

Obo og harpe

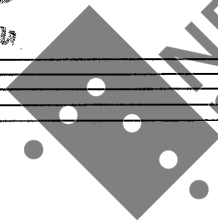




ERINDRING

for Oboe og HARPE

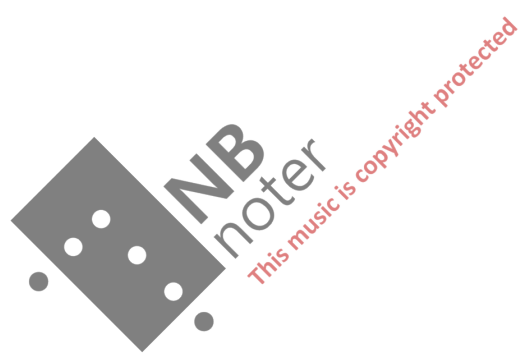
OBOE kan altereres med fløyte eller violin
Harpe " " piano



NB
noter

This music is copyright protected

Maj Sønsterød



ERINDRING

MAJ SÖNSTE VOLD

Rolig

Musical notation for the first system, measures 1-4. It features a vocal line in the upper staff and a piano accompaniment in the lower staff. The melody is characterized by a steady eighth-note rhythm with a melodic line that rises and then falls. The piano accompaniment consists of a simple harmonic accompaniment with a bass line that moves in parallel motion with the vocal line.

Musical notation for the second system, measures 5-8. The vocal line continues with a similar melodic pattern. The piano accompaniment includes some chords and rests, particularly in the vocal line's rests. The overall texture remains simple and accompanimental.

Musical notation for the third system, measures 9-12. The notation includes a watermark for 'NB meter' and 'this music is copyright protected'. The musical structure continues with the established vocal and piano parts.

Musical notation for the fourth system, measures 13-16. The system concludes with a final cadence in both the vocal and piano parts. The piano accompaniment features some block chords and a final bass line.

Handwritten musical score, first system. It consists of three staves: a single treble clef staff at the top, and a grand staff (treble and bass clefs) below. The music is in 2/4 time. The first staff contains a melody with notes and rests, including a measure with a fermata and a measure with a double bar line and a '2' above it. The grand staff contains accompaniment with chords and moving lines. A watermark 'NB noter' is visible in the center.

Handwritten musical score, second system. It consists of three staves: a single treble clef staff at the top, and a grand staff (treble and bass clefs) below. The music is in 2/4 time. The first staff contains a melody with notes and rests, including a measure with a fermata and a measure with a double bar line and a '25' above it. The grand staff contains accompaniment with chords and moving lines. A watermark 'NB noter' is visible in the center.

Handwritten musical score, third system. It consists of three staves: a single treble clef staff at the top, and a grand staff (treble and bass clefs) below. The music is in 2/4 time. The first staff contains a melody with notes and rests, including a measure with a fermata and a measure with a double bar line and a '30' above it. The grand staff contains accompaniment with chords and moving lines. A watermark 'NB noter' is visible in the center.

Handwritten musical score, fourth system. It consists of three staves: a single treble clef staff at the top, and a grand staff (treble and bass clefs) below. The music is in 2/4 time. The first staff contains a melody with notes and rests, including a measure with a fermata and a measure with a double bar line and a '35' above it. The grand staff contains accompaniment with chords and moving lines. A watermark 'NB noter' is visible in the center.

3

Handwritten musical notation for measures 3-6. The system consists of two staves: a treble clef staff on top and a bass clef staff on the bottom. The music is written in a simple, sketchy style with various note values and rests. Measure 3 starts with a treble clef and a whole note. Measure 4 has a treble clef and a whole note. Measure 5 has a treble clef and a whole note. Measure 6 has a bass clef and a whole note.

40

Handwritten musical notation for measures 40-43. The system consists of two staves: a treble clef staff on top and a bass clef staff on the bottom. The music is written in a simple, sketchy style with various note values and rests. Measure 40 has a treble clef and a whole note. Measure 41 has a treble clef and a whole note. Measure 42 has a treble clef and a whole note. Measure 43 has a treble clef and a whole note.

45

Handwritten musical notation for measures 45-48. The system consists of two staves: a treble clef staff on top and a bass clef staff on the bottom. The music is written in a simple, sketchy style with various note values and rests. Measure 45 has a treble clef and a whole note. Measure 46 has a treble clef and a whole note. Measure 47 has a treble clef and a whole note. Measure 48 has a treble clef and a whole note.

50

Handwritten musical notation for measures 50-53. The system consists of two staves: a treble clef staff on top and a bass clef staff on the bottom. The music is written in a simple, sketchy style with various note values and rests. Measure 50 has a treble clef and a whole note. Measure 51 has a treble clef and a whole note. Measure 52 has a treble clef and a whole note. Measure 53 has a treble clef and a whole note.



Handwritten musical notation for the first system, measures 55-59. The system consists of a vocal line in treble clef and a piano accompaniment in grand staff (treble and bass clefs). Measure 55 starts with a treble clef and a whole note G4. The piano accompaniment features chords in the right hand and single notes in the left hand. A fermata is placed over the final note of measure 59.

Handwritten musical notation for the second system, measures 60-64. The system consists of a vocal line in treble clef and a piano accompaniment in grand staff. Measure 60 begins with a treble clef and a whole note G4. The piano accompaniment continues with chords and single notes. A fermata is placed over the final note of measure 64.

Handwritten musical notation for the third system, measures 65-69. The system consists of a vocal line in treble clef and a piano accompaniment in grand staff. Measure 65 starts with a treble clef and a whole note G4. The piano accompaniment features chords in the right hand and single notes in the left hand. A fermata is placed over the final note of measure 69.

Handwritten musical notation for the fourth system, measures 70-74. The system consists of a vocal line in treble clef and a piano accompaniment in grand staff. Measure 70 begins with a treble clef and a whole note G4. The piano accompaniment continues with chords and single notes. A fermata is placed over the final note of measure 74.

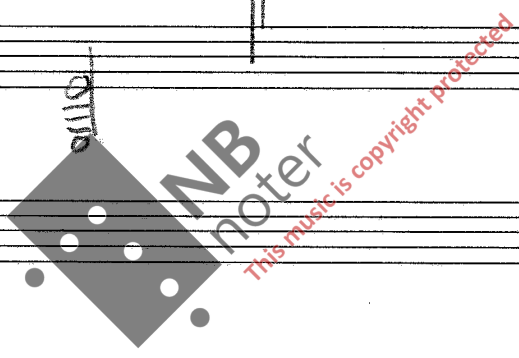
51

Handwritten musical notation for measures 51-54. The notation is written on a grand staff (treble and bass clefs). Measure 51 shows a melodic line in the treble clef and a bass line in the bass clef. Measure 52 continues the melody. Measure 53 shows a change in the bass line. Measure 54 features a key signature change to one sharp (F#) and a melodic flourish in the treble clef.

75

Handwritten musical notation for measures 75-76. Measure 75 shows a melodic line in the treble clef and a bass line in the bass clef. Measure 76 shows a key signature change to one sharp (F#) and a melodic flourish in the treble clef.

25/6-86



Five sets of empty musical staves, each consisting of a treble clef staff and a bass clef staff, arranged vertically.