

TIL-EGNET ALLE VÅRE
KRIGSINVALIDER (121)

I DE TUNGE TIDER.

Af G. STRØM

ALLEGRO MAESTOSO

OVERTURE,

CFI II

OBOE

BCL II

B.TRP. III

VALTH I II

TROMB I II

FAGOTT I II

Tuba

TIMPANI

Violino I II

Viola

CELLO BASS

SKALA Nr. 2

E-D-H

MUTED

3

mf

f

pizz

p

2.

A

Handwritten musical score for a symphony orchestra, featuring the following instruments and parts:

- CFL II**: Clarinet in F, 2nd part. Measures 1-5.
- OBO**: Oboe. Measures 1-5.
- Bcl II**: Bassoon, 2nd part. Measures 1-5.
- BTRP I II III**: Bass Trombone, 1st, 2nd, and 3rd parts. Measures 1-5.
- VALTH I F II**: Valve Trumpets in F, 1st and 2nd parts. Measures 1-5.
- TROMB I II**: Trombone, 1st and 2nd parts. Measures 1-5.
- FAGOTT I II**: Bassoon, 1st and 2nd parts. Measures 1-5.
- TUBA**: Tuba. Measures 1-5.
- TIMPANI**: Timpani. Measures 1-5.
- Violin I II**: Violins, 1st and 2nd parts. Measures 1-5.
- VIOLA**: Viola. Measures 1-5.
- CELLO BASS**: Cello and Double Bass. Measures 1-5.

The score includes various musical notations such as dynamics (e.g., *ff*, *fz*), articulation (accents, slurs), and performance instructions (e.g., *ARCO*, *TR*). A large watermark "MB noter" is visible across the center of the page.

3.

FL. I II

OBOE

BCL I II

BTRP I II III

VALT. I II

TROMB I II

FAGOTT I II

TUBA

TIMPANI

VIOLIN I II

VIOLA

CELLO & BASS

Measures: 7, 8, 9

ff, *fz*, *mf*, *f*, *fz*, *mf*, *fz*, *mf*, *fz*, *mf*, *fz*, *mf*, *fz*, *mf*, *fz*, *mf*, *fz*, *mf*, *fz*, *mf*, *fz*, *mf*, *fz*, *mf*

TRM

D₇, G, D₇, Em, Hm

This music is copyright protected

Handwritten musical score for a symphony orchestra, measures 10-13. The score includes parts for OFL, OBO, Bcl, BTRP, VAlth, TRomb, FAGOTT, Tuba, Timpani, Violin, Viola, and CELLO/BASS. The music is in D major (one sharp) and 4/4 time. Dynamics range from *f* (forte) to *mf* (mezzo-forte). The bass line at the bottom shows chords: C, G, AM H7, Em, Hm, G.

Instrument Parts:

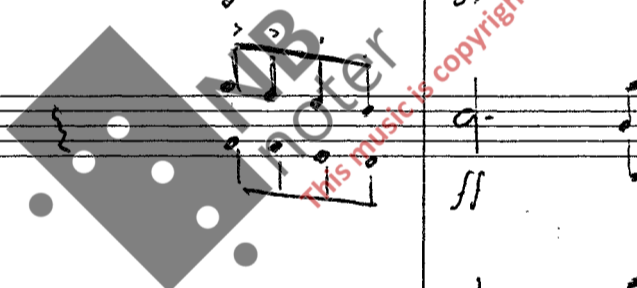
- OFL:** Measures 10-13, dynamics *f*, *mf*. Includes a *Tran* marking above measure 10.
- OBO:** Measures 10-13, dynamics *f*.
- Bcl:** Measures 10-13, dynamics *f*. Includes chord diagrams.
- BTRP:** Measures 10-13, dynamics *f*. Includes chord diagrams.
- VAlth:** Measures 10-13, dynamics *f*. Includes chord diagrams.
- TRomb:** Measures 10-13, dynamics *mf*. Includes chord diagrams.
- FAGOTT:** Measures 10-13, dynamics *mf*. Includes chord diagrams.
- Tuba:** Measures 10-13, dynamics *mf*. Includes chord diagrams.
- Timpani:** Measures 10-13, dynamics *f*, *mf*. Includes *TRm* markings and rhythmic patterns.
- Violin:** Measures 10-13, dynamics *f*. Includes chord diagrams.
- Viola:** Measures 10-13, dynamics *f*. Includes chord diagrams.
- CELLO/BASS:** Measures 10-13, dynamics *f*, *mf*. Includes chord diagrams.

Bass Line Chords: C, G, AM H7, Em, Hm, G

Handwritten musical score for a symphony orchestra, measures 14 through 18. The score includes parts for Clarinet in F (CFL), Oboe (OBO), B-flat Clarinet (Bbcl), Bassoon (BbTRP), Violin I and II (Violin I II), Trombone I and II (TRomb), Bassoon I and II (FAGOTT), Tuba, Timpani (TIMPANI), Violin I and II (Violin I II), and Cello/Double Bass (CELLO/BASS).

Measures 14-18 show a complex orchestral texture. The woodwinds and strings play rhythmic patterns, while the brass instruments (Trombone, Bassoon, Tuba) play sustained notes. The timpani provides a steady pulse. The score includes dynamic markings such as *f* (forte), *p* (piano), and *ff* (fortissimo), as well as articulation like accents and slurs. A "Solo" marking is present for the Trombone II part in measure 16. A "SKALA" (scale) is indicated at the bottom left, with the number "2" and the notes "Am H7".

Measures 14-18 show a complex orchestral texture. The woodwinds and strings play rhythmic patterns, while the brass instruments (Trombone, Bassoon, Tuba) play sustained notes. The timpani provides a steady pulse. The score includes dynamic markings such as *f* (forte), *p* (piano), and *ff* (fortissimo), as well as articulation like accents and slurs. A "Solo" marking is present for the Trombone II part in measure 16. A "SKALA" (scale) is indicated at the bottom left, with the number "2" and the notes "Am H7".



SKALA
Nr. 2
Am H7

EM

CT

Handwritten musical score for a symphony orchestra, measures 19-24. The score includes parts for Clarinet (CL), Oboe (OBO), Bassoon (Bcl I II), Bass Trombone (BTRP I II III), Violin (Violin I II), Viola, Cello (CELLO), Bass (BASS), and Timpani (TIMPANI). The music is in G major and 4/4 time. Dynamics range from *mf* to *sf*. The score features various articulations, including accents and slurs, and includes performance instructions such as *TRm* (Timpani roll) and *ARCO* (arco). A large watermark 'NB noter' is visible across the center of the page.



Handwritten musical score for a symphony orchestra, measures 24-27. The score includes parts for Flute (FL), Oboe (OBO), Bassoon (BCL I II), Trumpet (BTRD I II), Violin (VALTH in F I II), Trombone (TRomb I II), Fagott (FAGott I II), Tuba, Timpani, Violin, Viola, and Cello/Bass (CELLb BASS). The music is in G major and 4/4 time. Dynamics range from *f* to *ff*. Performance instructions include *cresc*, *BEKK*, and *ff*. Fingerings and bowings are indicated throughout. A large watermark 'NB noter' is present in the center of the page.

Handwritten musical score for a symphony orchestra, measures 28-32. The score includes parts for Clarinet (CL), Oboe (OBO), Bassoon (Bcl), Trumpets (BTRP), Violins (VALTH), Trombones (TRomb), Bassoon (FAGOTT), Tuba, Timpani (Timpani), Violins (Violini), Viola, and Cello/Double Bass (CELLO BASS). The music is in 2/4 time and features dynamic markings such as *ff*, *mf*, and *f*, along with performance instructions like *RIT* and *Trm*. A large watermark "MNB notator" is visible across the center of the page.

B

1 MODERATO 2 3

Handwritten musical score for a symphony orchestra, measures 33-35. The score includes parts for CFl II, OBo, Bcl. II, BTRP I II, Vcln I II, Tromb I II, FAGott II, Tub A, Timpani, Violin I II, Viola, and Cello Bass. The key signature is one sharp (F#) and the time signature is 2/4. The tempo is marked MODERATO. Dynamics include *f*, *mf*, *ff*, *pp*, and *ppp*. Performance instructions include accents (>), slurs, and *Rit*. A large watermark 'NB noter' is present across the center of the page.

Handwritten musical score for a symphony orchestra, page 70. The score is written in G major (one sharp) and 4/4 time. The instruments and their parts are as follows:

- Flute (Fl):** Measures 4, 5, 6, 7, 8, 9, 10. Measures 7-10 show a melodic line with slurs and accents.
- Oboe (Ob):** Measures 4, 5, 6, 7, 8, 9, 10. Measures 7-10 show a melodic line with slurs and accents.
- Bassoon (Bcl):** Measures 4, 5, 6, 7, 8, 9, 10. Measures 4-6 show a melodic line starting with a forte (f) dynamic.
- Trumpet (BTRP):** Measures 4, 5, 6, 7, 8, 9, 10. Measures 4-6 show a melodic line starting with a forte (f) dynamic.
- Violin (VALTh):** Measures 4, 5, 6, 7, 8, 9, 10. Measures 4-6 show a melodic line starting with a forte (f) dynamic.
- Violoncello (Vcl):** Measures 4, 5, 6, 7, 8, 9, 10. Measures 4-6 show a melodic line starting with a mezzo-forte (mf) dynamic.
- Double Bass (Cmb):** Measures 4, 5, 6, 7, 8, 9, 10. Measures 4-6 show a melodic line starting with a mezzo-forte (mf) dynamic.
- Timpani (Timp):** Measures 4, 5, 6, 7, 8, 9, 10. Measures 4-6 show rhythmic patterns with a mezzo-forte (mf) dynamic.
- Violin (Violin):** Measures 4, 5, 6, 7, 8, 9, 10. Measures 7-10 show a melodic line with a mezzo-forte (mf) dynamic.
- Viola (Viola):** Measures 4, 5, 6, 7, 8, 9, 10. Measures 7-10 show a melodic line with a mezzo-forte (mf) dynamic.
- Cello (Cello):** Measures 4, 5, 6, 7, 8, 9, 10. Measures 4-6 show a melodic line starting with a mezzo-forte (mf) dynamic. Chordal markings below the staff include H^2 , EM , AM , fD , mf , Am , and C .

The score includes various musical notations such as slurs, accents, and dynamic markings (f, mf). A large watermark "IMB" is visible across the center of the page.

Handwritten musical score for a symphony orchestra, page 77. The score is in G major (one sharp) and 3/4 time. It features ten staves for various instruments: C.F.L. II, OBO, Bcl II, BTRP II, VAlth in F II, TRomh II, FAGott II, Tuba, Timpani, Violin II, Viola, and CELLO BASS. The music is marked with dynamics such as *p*, *mf*, *f*, and *cresc*. Performance instructions include *TRm* (trumpet mutes) and *TRm* (trumpet mutes) for the timpani. The bottom staff includes handwritten chord progressions: *AM*, *D7*, *EM*, *A7*, *A7*, *EM*, and *Am7*. A large watermark 'NB Proter' is visible across the center of the page.

Handwritten musical score for a symphony orchestra, measures 18 through 24. The score includes parts for Flute (FL), Oboe (OBo), Bassoon (Bdl I II), Trumpet (BTRP I II III), Violin (VclTh in F I II), Trombone (Tromb I II), Bassoon (FAGOTT I II), Tuba, Timpani (Timpani), Violin (Violin I II), Viola, and Cello/Bass (CELLO BASS). The music is in G major (one sharp) and 3/4 time. A large watermark 'NB noter' is present across the center of the page, with the text 'This music is copyright protected' written diagonally below it.

Measures 18-19: Flute and Oboe play a melodic line starting on G4. Bassoon and Trombone I II play a lower melodic line. Violin I II and Viola play a sustained chord. Cello/Bass plays a bass line with notes G2, B1, and D2.

Measure 20: Flute and Oboe continue their melodic line. Bassoon and Trombone I II play a sustained chord. Violin I II and Viola play a sustained chord. Cello/Bass plays a bass line with notes G2, B1, and D2.

Measure 21: Flute and Oboe continue their melodic line. Bassoon and Trombone I II play a sustained chord. Violin I II and Viola play a sustained chord. Cello/Bass plays a bass line with notes G2, B1, and D2.

Measure 22: Flute and Oboe continue their melodic line. Bassoon and Trombone I II play a sustained chord. Violin I II and Viola play a sustained chord. Cello/Bass plays a bass line with notes G2, B1, and D2.

Measure 23: Flute and Oboe continue their melodic line. Bassoon and Trombone I II play a sustained chord. Violin I II and Viola play a sustained chord. Cello/Bass plays a bass line with notes G2, B1, and D2.

Measure 24: Flute and Oboe continue their melodic line. Bassoon and Trombone I II play a sustained chord. Violin I II and Viola play a sustained chord. Cello/Bass plays a bass line with notes G2, B1, and D2.

Handwritten annotations include dynamics such as *mf*, *f*, and *fz*, and performance markings like *Trum* and *HT*. The score is written in black ink on a white background.

Handwritten musical score for measures 25-32. The score includes parts for:

- CFL. II**: Clarinet in F major, measures 25-32.
- OBo**: Oboe, measures 25-32.
- Bbcl. II**: Bass Clarinet in Bb major, measures 25-32.
- BbTR. III**: Bass Trombone in Bb major, measures 25-32.
- Valdh. INF**: Valveless Horn in F major, measures 25-32.
- Troubons. IV**: Trombone in F major, measures 25-32.
- FAGOTT. ID**: Bassoon in F major, measures 25-32.
- Tuba**: Tuba, measures 25-32.
- TimPans**: Timpani, measures 25-32.
- Violin. IV**: Violin in F major, measures 25-32.
- Viola**: Viola in F major, measures 25-32.
- CELLO BASS**: Cello and Bass in F major, measures 25-32.

Measures 25-32 contain various musical notations including notes, rests, and dynamic markings such as *p*, *mf*, *f*, and *fz*. A watermark "IMB noter" is visible across the score.

Handwritten musical score for a symphony orchestra, measures 33-38. The score includes parts for Clarinet II, Oboe, Bass Clarinet II, Bass Trombone I/II/III, Violin II, Viola, Cello/Bass, and Timpani. The music is in G major (one sharp) and 4/4 time. Dynamics range from *mf* to *f*. A large watermark 'NB noter' is present across the center of the page.

Measures 33-38 are marked with measure numbers at the top of the staff. The bottom of the page contains handwritten chord symbols: *A7*, *H7*, *mf EM*, *AM7*, *H7*, *EM*, *#9*, and *EM*.

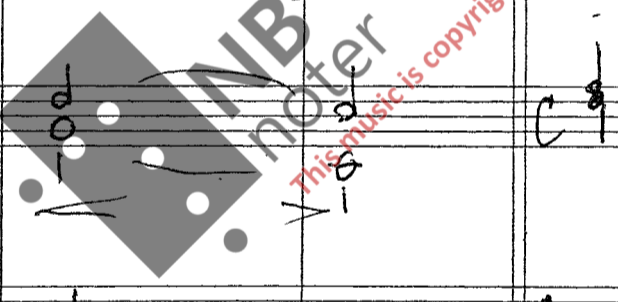
75.



Andantino

Handwritten musical score for orchestra, measures 39-42. The score includes parts for Clarinet II, Oboe, Bassoon, Trumpet III, Violin II, Trombone I, Fagott, Tuba, Timpani, Violin I, Violoncello/Bass, and Double Bass. The key signature is one sharp (F#) and the time signature is common time (C). The tempo is marked 'Andantino'. Dynamics include *f*, *mf*, *p*, and *rit*. A large watermark 'NB noter' is visible across the center of the page.

Measures 39-42 are shown. Measure 39 starts with a *f* dynamic. Measure 40 has a *mf* dynamic. Measure 41 has a *p* dynamic and a *rit* marking. Measure 42 has a *mf* dynamic. The score includes various musical notations such as notes, rests, slurs, and dynamic markings.



Handwritten musical score for a symphony orchestra, page 16. The score is divided into three measures. The instruments and their parts are as follows:

- Flute (Fl):** Part I and II. Measure 1: G4, A4, B4, C5. Measure 2: Rest. Measure 3: G4, A4, B4, C5.
- Oboe (Ob):** Part I and II. Measure 1: G4, A4, B4, C5. Measure 2: Rest. Measure 3: G4, A4, B4, C5.
- Clarinet (Cl):** Part I and II. Measure 1: G4, A4, B4, C5. Measure 2: Rest. Measure 3: G4, A4, B4, C5.
- Bassoon (BTRD):** Part I, II, and III. Measure 1: G4, A4, B4, C5. Measure 2: Rest. Measure 3: G4, A4, B4, C5.
- Violin (Vln):** Part I and II. Measure 1: G4, A4, B4, C5. Measure 2: G4, A4, B4, C5. Measure 3: G4, A4, B4, C5.
- Viola (Vla):** Part I and II. Measure 1: G4, A4, B4, C5. Measure 2: G4, A4, B4, C5. Measure 3: G4, A4, B4, C5.
- Cello (Cello) and Bass (BASS):** Part I and II. Measure 1: G4, A4, B4, C5. Measure 2: G4, A4, B4, C5. Measure 3: G4, A4, B4, C5.
- Trombone (TRomb):** Part I and II. Measure 1: G4, A4, B4, C5. Measure 2: G4, A4, B4, C5. Measure 3: G4, A4, B4, C5.
- Trumpet (TRum):** Part I and II. Measure 1: G4, A4, B4, C5. Measure 2: G4, A4, B4, C5. Measure 3: G4, A4, B4, C5.
- Timpani (Timpani):** Measure 1: G4, A4, B4, C5. Measure 2: G4, A4, B4, C5. Measure 3: G4, A4, B4, C5.
- Woodwinds:** Flute, Oboe, Clarinet, and Bassoon parts are mostly rests in measures 2 and 3.

Dynamic markings include *mf* (mezzo-forte) and *pp* (pianissimo). Performance instructions include *Trum* (Trumpet), *Alc* (Alcornoque), and *DF* (Dolce Flauto).

ALLEGRETTO

5 6 7 8

CL. *f*

OBO *f*

Bocl *mf* *MARCATO*

BTRP *mf*

VALTH *mf*

TROMB *mf*

FAGOTI *mf*

Tuba *mf*

Timpani *mf* TR *mf*

Violino *mf*

Viola *mf*

CELLO *mf*

BASS

G E7 AM D G G *mf* C

Handwritten musical score for orchestra, page 78. The score includes parts for C Flute I & II, Oboe, Bassoon I & II, Trumpets I & II, Trombones I & II, Tuba, Timpani, Violin, Viola, and Cello/Double Bass. The music is in G major and 4/4 time. The score is divided into measures 70, 71, and 72. The C Flute, Oboe, Bassoon, and Violin parts feature complex chordal textures. The Trombone and Tuba parts play a rhythmic pattern of eighth notes. The Timpani part has a specific TRm marking. The Cello/Double Bass part includes chordal accompaniment with notes G, E7, AM, D, and C.

Instrument parts and markings:

- C Fl I II:** Treble clef, G major key signature. Measures 70-72 show complex chordal textures.
- OBO:** Treble clef, G major key signature. Measures 70-72 show complex chordal textures.
- Bcl I II:** Treble clef, G major key signature. Measures 70-72 show complex chordal textures.
- BTRP I II III:** Treble clef, G major key signature. Measures 70-72 are mostly rests.
- VALTH I II:** Treble clef, G major key signature. Measures 70-72 show complex chordal textures.
- TROMB I II:** Bass clef, G major key signature. Measures 70-72 show rhythmic patterns.
- FAGOTT I II:** Bass clef, G major key signature. Measures 70-72 show rhythmic patterns.
- Tuba:** Bass clef, G major key signature. Measures 70-72 show rhythmic patterns.
- Timpani:** Bass clef. Measures 70-72 show rhythmic patterns with TRm marking.
- Violin:** Treble clef, G major key signature. Measures 70-72 show complex chordal textures.
- Viola:** Bass clef, G major key signature. Measures 70-72 show rhythmic patterns.
- Cello Bass:** Bass clef, G major key signature. Measures 70-72 show chordal accompaniment with notes G, E7, AM, D, C.

Handwritten musical score for orchestra, measures 13-17. The score includes parts for C.F.L., OBo, Bbcl II, BbTRP I II III, VALTh IV F II, Tromb II, FAGOTT II, Tuba, Timpani, Violin II, Viola, and CELLO BASS. The music is in G major and 3/4 time. A watermark 'NB noter' is visible across the score.

Measures 13-17:

- C.F.L.:** Rests in measures 13-17.
- OBo:** Rests in measures 13-17.
- Bbcl II:** Chordal accompaniment starting in measure 14, ending in measure 17 with a *p* dynamic and *RIT.* marking.
- BbTRP I II III:** Chordal accompaniment starting in measure 14, ending in measure 17 with a *p* dynamic and *RIT.* marking.
- VALTh IV F II:** Chordal accompaniment starting in measure 14, ending in measure 17 with a *p* dynamic and *RIT.* marking.
- Tromb II:** Single notes in measures 14-17.
- FAGOTT II:** Single notes in measures 14-17.
- Tuba:** Single notes in measures 14-17.
- Timpani:** *TRm* (trill) in measures 13, 14, 16, and 17. Dynamics include *f* in measure 14 and *PRIT* in measure 17.
- Violin II:** *Pizz* (pizzicato) in measures 14-16, *ARCO* (arco) in measure 17. Dynamics include *mf* in measure 14 and *PV RIT* in measure 17.
- Viola:** *Pizz* in measures 14-16, *ARCO* in measure 17. Dynamics include *mf* in measure 14 and *P RIT* in measure 17.
- CELLO BASS:** *Pizz* in measures 14-16, *ARCO* in measure 17. Dynamics include *mf* in measure 14. Chords are indicated below the staff: G, C, G, E7, Am, D, G.

SKALA Nr. 2 is written at the bottom left.

Handwritten musical score for a symphony orchestra, measures 18-22. The score includes parts for Flute I & II, Oboe, B♭ Clarinet I & II, Bass Trumpet I, II & III, Violin I & II, Viola, Cello, Double Bass, Trombone I & II, Bassoon I & II, and Timpani. The key signature is one sharp (F#) and the time signature is 4/4. The score is marked with dynamics such as *mf* and *f*, and includes performance instructions like *ARCO* and *TRM*. A large watermark "NB Moter" is visible across the center of the page.

20..

Flute I & II (d Fl. I II) part, measures 18-22. Measure 18 is a whole rest. Measure 19 is a whole rest. Measure 20 starts with a dynamic marking of *f* and contains a melodic line. Measures 21 and 22 continue the melodic line.

Oboe part, measures 18-22. Measure 18 is a whole rest. Measure 19 is a whole rest. Measure 20 starts with a dynamic marking of *f* and contains a melodic line. Measures 21 and 22 continue the melodic line.

B♭ Clarinet I & II (Bb cl I II) part, measures 18-22. Measure 18 starts with a dynamic marking of *mf*. Measure 19 is a whole rest. Measure 20 starts with a dynamic marking of *f*. Measures 21 and 22 continue the melodic line.

Bass Trumpet I, II & III (Bb TRP. I II III) part, measures 18-22. Measure 18 starts with a dynamic marking of *mf*. Measure 19 is a whole rest. Measure 20 starts with a dynamic marking of *f*. Measures 21 and 22 continue the melodic line.

Violin I & II (Vcl I II) part, measures 18-22. Measure 18 starts with a dynamic marking of *mf*. Measure 19 is a whole rest. Measure 20 starts with a dynamic marking of *f*. Measures 21 and 22 continue the melodic line.

Trombone I & II (TRomb I II) part, measures 18-22. Measure 18 starts with a dynamic marking of *mf*. Measure 19 is a whole rest. Measure 20 starts with a dynamic marking of *mf*. Measures 21 and 22 continue the melodic line.

Bassoon I & II (FAGOTT I II) part, measures 18-22. Measure 18 starts with a dynamic marking of *mf*. Measure 19 is a whole rest. Measure 20 starts with a dynamic marking of *mf*. Measures 21 and 22 continue the melodic line.

Tuba part, measures 18-22. Measure 18 starts with a dynamic marking of *mf*. Measure 19 is a whole rest. Measure 20 starts with a dynamic marking of *mf*. Measures 21 and 22 continue the melodic line.

Timpani (Timpani) part, measures 18-22. Measure 18 starts with a dynamic marking of *mf*. Measure 19 is a whole rest. Measure 20 starts with a dynamic marking of *mf*. Measures 21 and 22 continue the melodic line.

Violin I & II (Violin I II) part, measures 18-22. Measure 18 starts with a dynamic marking of *mf*. Measure 19 is a whole rest. Measure 20 starts with a dynamic marking of *mf*. Measures 21 and 22 continue the melodic line.

Viola part, measures 18-22. Measure 18 starts with a dynamic marking of *mf*. Measure 19 is a whole rest. Measure 20 starts with a dynamic marking of *mf*. Measures 21 and 22 continue the melodic line.

Cello and Double Bass (Cello Bass) part, measures 18-22. Measure 18 starts with a dynamic marking of *mf*. Measure 19 is a whole rest. Measure 20 starts with a dynamic marking of *mf*. Measures 21 and 22 continue the melodic line.

ALLEGRETTO

MARCATO

Handwritten musical score for orchestra, measures 23-26. The score includes parts for CFl II, OBO, Bbcl II, BbTRD I & II, VALDL II INF., TRomb II, FAGOTTI II, Tuba, TIMPAN, Violin II, Viola, and Cello/BASS. The tempo is ALLEGRETTO, and the dynamic marking for measures 26-27 is MARCATO. The score features various musical notations including notes, rests, and dynamic markings like *mf* and *f*.



SKALA
 G C G E7 AM G C

Handwritten musical score for orchestra, measures 27-30. The score includes parts for Clarinet in F (I, II), Oboe, B♭ Clarinet (I, II), B♭ Trumpet (I, II, III), Violin (I, II), Viola, Cello/Bass, Trombone (I, II), and Fagott (I, II). The key signature is one sharp (F#) and the time signature is 3/4. The score is divided into three systems: measures 27-28, 29, and 30. The dynamic marking *ff* (fortissimo) is present in measures 29 and 30. The Cello/Bass part includes chordal notation: G, E², Am, D, G, H⁷, Fm⁷, and A.

NB noter
This music is copyright protected

Handwritten musical score for various instruments. The score is organized into systems, each with a staff label on the left. The instruments included are:

- CFL. II**: Clarinet in F, marked *f*. Measure numbers 31, 32, 33, and 34 are indicated above the staff.
- OBo**: Oboe, marked *mf*.
- Bbcl. II**: Bass Clarinet, marked *f*.
- BbTRP III**: Bass Trombone, marked *f*.
- Valh. III**: Valve Trumpet, marked *f*.
- TRuh II**: Trumpet in C, marked *mf*.
- FAGOTT II**: Bassoon, marked *mf*.
- Tubn**: Tuba.
- Timpani**: Marked *f*.
- Violin II**: Marked *f*.
- Viola**: Marked *mf*.
- Cello Bass**: Marked *mf*.

The score features various musical notations including notes, rests, and dynamic markings. A large watermark for "NB noter" is visible in the center of the page, along with the text "This music is copyright protected".

D

ANDANTE SOSTENUTO

Handwritten musical score for a symphony orchestra, measures 24-30. The score includes parts for CFl, OBo, Bbcl, BbTRP, VALTA, TROMB, FAGOTT, Tuba, Timpani, Violin, and Cello/Bass. The tempo is marked 'ANDANTE SOSTENUTO'. The key signature is one sharp (F#). The score features various musical notations including notes, rests, dynamics (mf, f, p), and performance instructions like 'Pizz' and 'BEKKEN TRm'. A large watermark 'NB not copyright protected' is visible across the center of the page.

Instrument Parts:

- CFl I II:** Rests throughout.
- OBo:** Rests throughout.
- Bbcl I II:** Rests throughout.
- BbTRP I II III:** Rests throughout.
- VALTA I II:** Notes with dynamics *mf* and *f*.
- TROMB I II:** Notes with dynamics *mf* and *f*.
- FAGOTT I II:** Notes with dynamics *mf* and *f*.
- Tuba:** Notes with dynamics *f*.
- Timpani:** Rests, with *f* dynamic and instruction 'BEKKEN TRm' at measure 25.
- Violin I II:** Pizzicato (Pizz) notes with dynamics *p*.
- Cello/BASS:** Pizzicato (Pizz) notes with dynamics *p* and *f*. Includes figured bass notation: *G*, *D7*, *G*, *Hm*, *b*, *A7*.

Handwritten musical score for a symphony orchestra, page 25. The score is arranged in a system with six staves. The instruments and parts are:

- CFL I II**: Clarinet in F, I and II parts. Measures 8-12 are mostly rests.
- OBo**: Oboe. Measures 8-12 are mostly rests.
- Bbcl I II**: Clarinet in Bb, I and II parts. Measures 8-12 are mostly rests.
- BbTRP**: Bass Trombone. Measures 8-12 are mostly rests.
- VALTh I II**: Violin I and II. Measures 8-12 contain musical notation with dynamics like *ff*, *f*, and *mf*.
- TROMb I II**: Trombone I and II. Measures 8-12 contain musical notation with dynamics like *ff*, *f*, and *mf*.
- FRAGOTTI II**: Bassoon II. Measures 8-12 contain musical notation with dynamics like *ff*, *f*, and *mf*.
- Tubn**: Tuba. Measures 8-12 contain musical notation with dynamics like *f*, *ff*, and *mf*.
- Timpani**: Timpani. Includes markings for *BEHR*, *TR*, *ARCO*, and *ff*.
- Violin I II**: Violin I and II. Measures 8-12 contain musical notation with dynamics like *f*, *ff*, and *mf*.
- VIOLA**: Viola. Measures 8-12 contain musical notation with dynamics like *f*, *ff*, and *mf*.
- CELLO**: Cello. Measures 8-12 contain musical notation with dynamics like *f*, *ff*, and *mf*.
- BASS**: Bass. Measures 8-12 contain musical notation with dynamics like *f*, *ff*, and *mf*.

The score includes various musical notations such as notes, rests, and dynamic markings. A large watermark "NB noter" is visible across the center of the page, along with the text "This music is copyright protected".

Handwritten musical score for measures 14-19. The score includes parts for C Flute, Oboe, Bb Clarinet, Bb Trumpet, Violin I & II, Trombone I & II, Bassoon I & II, Tuba, Timpani, Violin I & II, Viola, and Cello/Bass. The key signature is one sharp (F#) and the time signature is 3/4. The score features dynamic markings such as *ff*, *f*, and *mf*, and includes a section with a box around measures 16-17. A watermark 'IMB noter' and 'This music is copyright protected' is visible across the score.

Measures: 14, 15, 16, 17, 18, 19

Instrument parts and markings:

- C FL I II: Rest
- OBo: Rest
- Bb cl I II: Rest
- Bb TRP I II III: Rest
- VALTH I II: *ff*, *f*, *mf*
- TROMB I II: *ff*, *f*, *mf*
- FAGOTT I II: *ff*, *f*, *mf*
- TUBA: *ff*, *f*
- TIMPANI: *ff*, BEKKEN
- Violino I II: *ff*, *f*, *mf*
- Viola: *ff*, *f*, *mf*
- CELLO BASS: *ff*, *f*, *mf*

Handwritten musical score for a symphony orchestra, measures 20-26. The score includes parts for Flute I & II, Oboe, Clarinet in B-flat I & II, Bassoon I & II, Violin I & II, Viola, Cello, and Bass. The music is in G major (one sharp) and 4/4 time. Measure 20 starts with a rest for all instruments. Measure 21 features a flute solo with a sixteenth-note pattern, marked *f*. The woodwinds and strings provide harmonic support. Measure 22 continues the flute solo. Measure 23 has a flute solo with a dotted quarter note, marked *mf*. Measure 24 features a flute solo with a sixteenth-note pattern, marked *f*. Measure 25 has a flute solo with a dotted quarter note, marked *f*. Measure 26 concludes with a complex chordal structure for the flute and woodwinds.



BEKKN
TR m

Handwritten musical score for a symphony orchestra. The score is written on ten staves, each labeled with an instrument and its part number. The instruments and parts are: Clarinet I & II (27, 28, 29, 30, 31, 32), Oboe, Bb Clarinet I & II, Bb Trumpet I, II, III, Violin I & II, Trombone I & II, Bassoon I & II, Tuba, Timpani, Violin I & II, Viola, and Cello/Bass. The score includes various musical notations such as notes, rests, dynamics (ff, f, mf), and articulation marks. A large watermark 'MB Moter' is visible across the center of the page, with the text 'This music is copyright protected' written diagonally. The page number '28' is written at the top center.

28

CL
I II

OBo.

Bbcl
I II

BbTRP
I II III

VAIth.
I II

TROMb
I II

FAGOTT
I II

Tuba

Timpani

Violin
I II

Viola

CELLO
BASS

BERKEN

mf
A2

D

Em

ff
Am

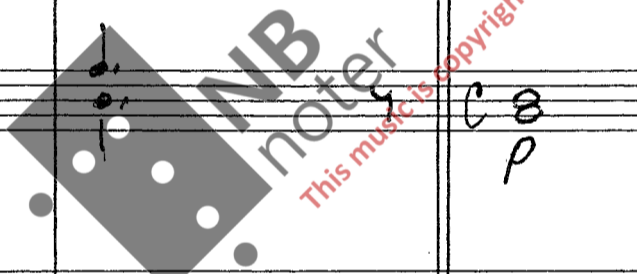
f
Em

MB Moter
This music is copyright protected

Handwritten musical score for a symphony orchestra, measures 33-38. The score includes parts for Clarinet in F (CL. F), Oboe (OBO), Bass Clarinet in Bb (Bbcl. Bb), Bass Trombone (BbTRO. Bb), Violin II (Vcln. II), Trombone II (Tromb. II), Bassoon II (FAGOTTI II), Tuba, Timpani (TIMPANI), Violin III (Violino III), Viola (Viola), and Cello/Double Bass (CELLO BASS). The music is in 4/4 time with a key signature of one sharp (F#). Measure numbers 33, 34, 35, 36, 37, and 38 are indicated above the staff. Dynamics include *df*, *f*, and *mf*. A large watermark 'INB noter' is visible across the center of the page.

E MODERATO

Handwritten musical score for a symphony orchestra, measures 39-44. The score includes parts for Clarinet II, Oboe, Bass Clarinet II, Bass Trombone I/II/III, Violin I/II, Trombone I/II, Flute I/II, Tuba, Timpani, Violin I/II, and Cello/Bass. The music is in E major and 4/4 time, marked Moderato. Dynamics range from *mf* to *f*. Performance instructions include *cresc.*, *TRm*, *BEKREN*, and *Solo*. A large watermark 'NB noter' is present across the middle of the page.



Handwritten musical score for a symphony orchestra, page 31. The score is arranged in a standard orchestral layout with staves for various instruments. The key signature is one sharp (F#) and the time signature is 3/4. The score is divided into three measures.

- CLFL. I & II:** Flute parts with notes and dynamics like *f*.
- OBo:** Oboe part with notes and dynamics like *mf*.
- Bbcl. II:** Clarinet in B-flat part with notes and dynamics like *mf*.
- BbTRP I & II:** Trumpet in B-flat parts with notes and dynamics like *f* and *mf*.
- Valh I & II:** Valve Trombone parts with notes and dynamics like *f* and *mf*.
- TRomb II:** Trombone II part with notes and dynamics like *f* and *mf*.
- FAGOTT I & II:** Bassoon parts with notes and dynamics like *f* and *mf*.
- Tuba:** Tuba part with notes and dynamics like *f* and *mf*.
- Timpani:** Timpani part with notes and dynamics like *f* and *mf*.
- Violin I & II:** Violin parts with notes and dynamics like *f* and *mf*.
- Viola:** Viola part with notes and dynamics like *f* and *mf*.
- CELLO BASS:** Cello and Bass part with notes and dynamics like *f* and *mf*.

Handwritten annotations include "RIT" (Ritardando) in the BbTRP I & II, Valh I & II, and Violin I & II staves. A large watermark "NB noter" and "This music is copyright protected" is visible across the center of the page.

ALLEGRO SCHERZANDO

Handwritten musical score for a symphony orchestra, measures 32-35. The score includes parts for Clarinet in F (CL), Oboe (OBO), Bassoon (Bbcl. I II), Bass Trumpet (BbTRP I II III), Violin (Violin I II), Viola, Cello (CELLO), and Bass (BASS). The music is in 2/4 time with a key signature of one sharp (F#). The first staff (CL) has a dynamic marking of *f* and includes fingerings (7, 8) and breath marks. The second staff (OBO) is silent. The third staff (Bbcl. I II) has a dynamic marking of *f* and includes fingerings (8). The fourth staff (BbTRP I II III) is silent. The fifth staff (Violin I) has a dynamic marking of *mf* and includes the instruction *Pizz*. The sixth staff (Violin II) has a dynamic marking of *mf* and includes the instruction *Pizz*. The seventh staff (Viola) has a dynamic marking of *mf* and includes the instruction *Pizz*. The eighth staff (Cello) has a dynamic marking of *mf* and includes the instruction *Pizz*. The ninth staff (Bass) has a dynamic marking of *mf* and includes the instruction *Pizz*. The tenth staff (Trombone I II) has a dynamic marking of *mf*. The eleventh staff (Fagott I II) has a dynamic marking of *mf* and includes the instruction *f*. The twelfth staff (Tuba) has a dynamic marking of *mf*. The thirteenth staff (Timpani) has a dynamic marking of *f* and includes the instruction *TR*. The score is marked with a large watermark 'This music is copyright protected'.

ANDANTE MAESTOSO

Handwritten musical score for a symphony orchestra, featuring staves for OFL II, OBO, Bbcl II, BbTRO II, Vclln I & II, Trambone I & II, Tuba, Timpani, Violin I & II, Viola, and Cello Bass. The score includes dynamic markings (mf, ff), performance instructions (Rit, Trm, ARCO), and a tempo change to ANDANTE MAESTOSO. A large watermark 'NB noter' is present across the center of the page.

OFL II: *mf* Rit, *ff* (Trm), *mf* (33)

OBO: *mf* Rit, *ff*, *mf*

Bbcl II: *mf* Rit, *ff* (trills), *mf*

BbTRO II: *mf* Rit, *ff* (trills), *mf*

Vclln I & II: *mf* Rit, *ff* (ARCO), *mf*

Trambone I & II: *mf* Rit, *ff*, *mf*

Tuba: *mf* Rit, *ff*, *mf*

Timpani: *mf* Rit, *ff* (TR m), *mf*

Viola: *mf* Rit, *ff* (ARCO), *mf*

Cello Bass: *mf* Rit, *ff* (ARCO), *mf*

Handwritten musical score for a symphony orchestra, featuring staves for various instruments and dynamic markings.

Instrument Staves:

- d FL. I II:** Flute parts with dynamic markings *f* and *mf*.
- OBo:** Oboe part with a *Solo* marking and dynamics *mf*, *f*, and *mf*.
- Bbcl I II:** Clarinet parts with dynamics *mf* and *f*.
- BbTRP I II III:** Bassoon parts with dynamics *f* and *mf*.
- VALTH. I II:** Valve Trombone parts with dynamics *f* and *mf*.
- TRomh I II:** Horn parts with dynamics *f* and *mf*.
- FAGoTI I II:** Bassoon parts with dynamics *f* and *mf*.
- Tubn:** Trombone part with dynamics *ff* and *mf*.
- Timpani:** Drum part with *TRum* markings and dynamics *ff*.
- Violin I II:** Violin parts with dynamics *f* and *mf*.
- Viola:** Viola part with dynamics *f* and *mf*.
- CELlo BASS:** Cello and Double Bass parts with dynamics *f* and *mf*.

Tempo and Performance Markings:

- Tempo: *94*
- Performance: *Trum* (Trombone), *Solo* (Oboe), *ff* (fortissimo), *mf* (mezzo-forte), *f* (forte).

Watermark: A large watermark for "MP3Player" is visible across the center of the page, with the text "This music is copyright protected" written diagonally.

Handwritten musical score for a symphony orchestra, page 35. The score includes parts for Clarinet in F (CL F), Oboe (OBO), Bass Clarinet (Bb CL), Bass Trumpet (Bb TRP), Violin I (Vln I), Violin II (Vln II), Trombone I (TR I), Trombone II (TR II), Bassoon (FAGOTT), Tuba, Timpani (TIMPANI), Violin III (Vln III), Viola, and Cello/Double Bass (CELLO/BASS). The music is in 3/4 time with a key signature of one sharp (F#). The score is marked with dynamics such as *ff*, *f*, *mf*, and *pp*. Measure numbers 9, 20, 21, 22, 23, 14, and 15 are indicated. A large watermark for 'NB noter' is present in the center of the page, with the text 'This music is copyright protected' written diagonally across it.

Handwritten musical score for a symphony orchestra, measures 16-22. The score includes parts for C Flute, Oboe, Bb Clarinet, Bb Trumpet, Violin, Trombone, Fagott, Tuba, Timpani, Violin, Viola, and Cello/Bass. It features dynamic markings like *f* and *ff*, and includes a large watermark "NB noter" and "This music is copyright protected".

Measures 16-22 are shown. The score includes parts for C Flute, Oboe, Bb Clarinet, Bb Trumpet, Violin, Trombone, Fagott, Tuba, Timpani, Violin, Viola, and Cello/Bass. Dynamic markings include *f* and *ff*. A large watermark "NB noter" and "This music is copyright protected" is visible across the score.

Handwritten musical score for various instruments. The score is organized into staves for each instrument, with dynamic markings and performance instructions.

- CFL I II**: Treble clef, 3/4 time signature. Measures 23-25 feature triplets and a half note. Measure 26 has a fermata. Dynamics: *cresc*, *ff*.
- OBo**: Treble clef. Measures 23-25 have quarter notes. Measure 26 has a fermata. Dynamics: *cresc*, *ff*.
- Bb cl I II**: Treble clef, 3/4 time signature. Measures 23-25 have quarter notes. Measure 26 has a fermata. Dynamics: *cresc*, *ff*.
- Bb TR I II**: Treble clef, 3/4 time signature. Measures 23-25 have quarter notes. Measure 26 has a fermata. Dynamics: *cresc*, *ff*.
- Valdh I II**: Treble clef, 3/4 time signature. Measures 23-25 have quarter notes. Measure 26 has a fermata. Dynamics: *cresc*, *ff*.
- Tromb I**: Bass clef, 3/4 time signature. Measures 23-25 have quarter notes. Measure 26 has a fermata. Dynamics: *cresc*, *ff*.
- FAGo II**: Bass clef, 3/4 time signature. Measures 23-25 have quarter notes. Measure 26 has a fermata. Dynamics: *cresc*, *ff*.
- Tuba**: Bass clef, 3/4 time signature. Measures 23-25 have quarter notes. Measure 26 has a fermata. Dynamics: *cresc*, *ff*.
- TIMPA I**: Bass clef, 3/4 time signature. Measures 23-25 have quarter notes. Measure 26 has a fermata. Dynamics: *cresc*, *ff*. Includes *TRm* markings.
- Violin I II**: Treble clef, 3/4 time signature. Measures 23-25 have quarter notes. Measure 26 has a fermata. Dynamics: *cresc*, *ff*.
- Viola**: Bass clef, 3/4 time signature. Measures 23-25 have quarter notes. Measure 26 has a fermata. Dynamics: *cresc*, *ff*.
- Cello Bass**: Bass clef, 3/4 time signature. Measures 23-25 have quarter notes. Measure 26 has a fermata. Dynamics: *cresc*, *ff*. Includes *c*, *D2*, *G* markings.

