

*Andantino*  
*pp*

2 3 4

*dim.*  
*dim.*

*pp*

*pp*

5

*pp* 15

*pp*

10

*ff*

*ff*

*ff*

*ff*

*La klänge*

*ff*

This is a handwritten musical score consisting of approximately 12 staves. The notation includes various musical symbols such as notes, rests, and dynamic markings. A prominent watermark for 'NB noter' is overlaid on the center of the page, with the text 'This music is copyright protected' written in red below it. The score is divided into sections, with a boxed '15' appearing on the second staff and a boxed '25' on the eighth staff. The music is written in a style that suggests a contemporary or experimental composition, with some staves featuring complex rhythmic patterns and dynamic contrasts. The page number '2' is located in the top right corner.

Handwritten musical score system 1, consisting of three staves. The top staff contains a melodic line with various notes and accidentals. The middle staff contains a bass line with notes and rests. The bottom staff is mostly empty with some initial notes. A large blacked-out rectangular area is present in the middle staff.

Handwritten musical score system 2, consisting of three staves. The top staff has a melodic line starting with a forte (f) dynamic. The middle staff has a bass line with notes and rests, including a boxed-in section labeled '30'. The bottom staff contains a piano (pp) section with a series of slanted lines and a boxed-in section labeled '10'. A watermark 'NB noter' and 'This music is copyright protected' is overlaid on the system.

Handwritten musical score system 3, consisting of three staves. The top staff has a melodic line with a forte (f) dynamic and the instruction 'All. 1<sup>o</sup> p'. The middle staff has a bass line with notes and rests, including a boxed-in section labeled '35'. The bottom staff contains a piano (p) section with notes and rests.

**NBNB**  
noter  
This music is copyright protected

Handwritten musical score for measures 50-54. The score is written on three staves. The first staff contains treble clef notation with various notes and rests. The second staff contains bass clef notation. The third staff contains bass clef notation. Dynamic markings include *pp* and *ppp*. A circled measure number '50' is written in the middle of the system.

Handwritten musical score for measures 55-59. The score is written on three staves. The first staff contains treble clef notation. The second and third staves contain bass clef notation. The notation includes various notes, rests, and accidentals.

Handwritten musical score for measures 60-64. The score is written on three staves. The first staff contains treble clef notation. The second and third staves contain bass clef notation. Dynamic markings include *pp*, *ppp*, *legno*, and *arco*. A circled measure number '60' is written in the middle of the system.

Handwritten musical score for measures 65-69. The score is written on three staves. The first staff contains treble clef notation. The second and third staves contain bass clef notation. The notation includes various notes, rests, and accidentals.

Handwritten musical score for measures 70-74. The score is written on three staves. The first staff contains treble clef notation. The second and third staves contain bass clef notation. Dynamic markings include *pp*, *ppp*, *legno*, and *arco*. A circled measure number '70' is written in the middle of the system.

Handwritten musical score for measures 75-79. The score is written on three staves. The first staff contains treble clef notation. The second and third staves contain bass clef notation. The notation includes various notes, rests, and accidentals.



collegur    arco    legur    arco

65

pp

pp

8m

rit

off

off



II

Andante

Senza tempo

FL

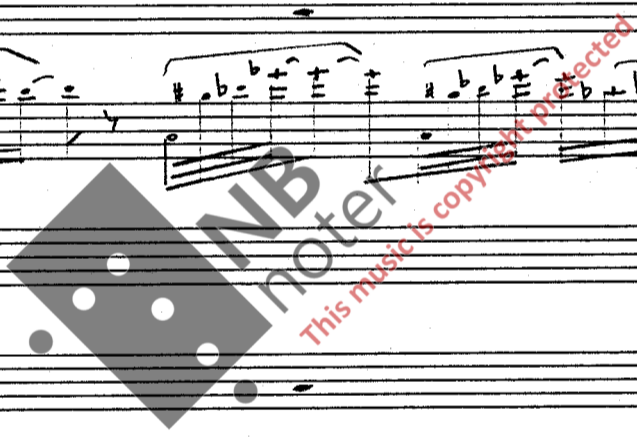
VL

Basso

Handwritten musical score for the first system, including staves for Flute (FL), Violin (VL), and Bass (Basso). The score includes dynamic markings such as *ff* and *mf*, and a tempo marking of *Tempo ad lib*. The bass staff includes the instruction "(klang im Bass)".

Handwritten musical score for the second system, primarily featuring a melodic line on a single staff with various notes and rests.

Handwritten musical score for the third system, featuring a melodic line on a single staff with a *dim* (diminuendo) marking.



Mod.to  
Sm

FL  
VL

Musical notation for Flute (FL) and Violin (VL) parts, measures 1-4. The Flute part has a treble clef and a key signature of one sharp (F#). The Violin part has a treble clef and a key signature of one sharp (F#). Both parts are in 4/4 time. The Flute part starts with a quarter rest, followed by a quarter note G4, a quarter note A4, and a quarter note B4. The Violin part starts with a quarter rest, followed by a quarter note G4, a quarter note A4, and a quarter note B4.

BKL

Musical notation for Bassoon (BKL) part, measures 1-4. The Bassoon part has a bass clef and a key signature of one sharp (F#). It starts with a quarter rest, followed by a quarter note G3, a quarter note A3, and a quarter note B3. There is a box containing the number '5' below the staff.

FL  
VL

Musical notation for Flute (FL) and Violin (VL) parts, measures 5-8. The Flute part has a treble clef and a key signature of one sharp (F#). The Violin part has a treble clef and a key signature of one sharp (F#). Both parts are in 4/4 time. The Flute part starts with a quarter rest, followed by a quarter note G4, a quarter note A4, and a quarter note B4. The Violin part starts with a quarter rest, followed by a quarter note G4, a quarter note A4, and a quarter note B4. The word 'accel' is written below the Violin staff.

FL  
VL

Musical notation for Flute (FL) and Violin (VL) parts, measures 9-12. The Flute part has a treble clef and a key signature of one sharp (F#). The Violin part has a treble clef and a key signature of one sharp (F#). Both parts are in 4/4 time. The Flute part starts with a quarter rest, followed by a quarter note G4, a quarter note A4, and a quarter note B4. The Violin part starts with a quarter rest, followed by a quarter note G4, a quarter note A4, and a quarter note B4. The word 'p' is written below the Violin staff.

BKL

Musical notation for Bassoon (BKL) part, measures 9-12. The Bassoon part has a bass clef and a key signature of one sharp (F#). It starts with a quarter rest, followed by a quarter note G3, a quarter note A3, and a quarter note B3. There is a box containing the number '10' below the staff.

FL  
VL

Musical notation for Flute (FL) and Violin (VL) parts, measures 13-16. The Flute part has a treble clef and a key signature of one sharp (F#). The Violin part has a treble clef and a key signature of one sharp (F#). Both parts are in 4/4 time. The Flute part starts with a quarter rest, followed by a quarter note G4, a quarter note A4, and a quarter note B4. The Violin part starts with a quarter rest, followed by a quarter note G4, a quarter note A4, and a quarter note B4. The word 'ritard' is written below the Violin staff.

BKL

Musical notation for Bassoon (BKL) part, measures 13-16. The Bassoon part has a bass clef and a key signature of one sharp (F#). It starts with a quarter rest, followed by a quarter note G3, a quarter note A3, and a quarter note B3. The word 'pp' is written below the staff.

FL  
VL

Musical notation for Flute (FL) and Violin (VL) parts, measures 17-20. The Flute part has a treble clef and a key signature of one sharp (F#). The Violin part has a treble clef and a key signature of one sharp (F#). Both parts are in 4/4 time. The Flute part starts with a quarter rest, followed by a quarter note G4, a quarter note A4, and a quarter note B4. The Violin part starts with a quarter rest, followed by a quarter note G4, a quarter note A4, and a quarter note B4. The word 'pp' is written below the Violin staff.

BKL

Musical notation for Bassoon (BKL) part, measures 17-20. The Bassoon part has a bass clef and a key signature of one sharp (F#). It starts with a quarter rest, followed by a quarter note G3, a quarter note A3, and a quarter note B3. The word 'pp' is written below the staff.

FL  
VL

Musical notation for Flute (FL) and Violin (VL) parts, measures 21-24. The Flute part has a treble clef and a key signature of one sharp (F#). The Violin part has a treble clef and a key signature of one sharp (F#). Both parts are in 4/4 time. The Flute part starts with a quarter rest, followed by a quarter note G4, a quarter note A4, and a quarter note B4. The Violin part starts with a quarter rest, followed by a quarter note G4, a quarter note A4, and a quarter note B4.

BKL

Musical notation for Bassoon (BKL) part, measures 21-24. The Bassoon part has a bass clef and a key signature of one sharp (F#). It starts with a quarter rest, followed by a quarter note G3, a quarter note A3, and a quarter note B3.



FL *pp*

VL *pp*

BKL *pp*

15

FL

VL

BKL

20

FL *pp*

VL

BKL

FL *f*

VL *mf*

BKL

25

FL

VL

BKL *p*



FL  
VL  
BKL

FL  
VL  
BKL

FL  
VL  
BKL

301

FL  
BKL

FL  
BKL

351



FL  
VL  
BKL

pp (w. pas.)

8m

mf

f

arco

P:3

f

arco

FL  
VL  
BKL

f

8m

ch

di

e#

FL  
VL  
BKL

P:3

FL  
VL  
BKL

f

(6m?)

FL  
VL  
BKL

Allegro

ff

FL  
VL  
BKL

ff

Handwritten musical score for the first system, consisting of six staves. The notation includes treble and bass clefs, a key signature of one sharp (F#), and a 4/4 time signature. The music features melodic lines with various note values (quarter, eighth, and sixteenth notes) and rests. Dynamic markings include *ff* (fortissimo) and *sm* (sforzando). There are also some handwritten annotations above the first staff, possibly indicating phrasing or articulation. The system concludes with a double bar line.

