

Barnet

Gunnar Sønstevoid
tekst Tarjei Vesås

$\text{♩} = 66$
Bør - - net kliv i bak - kor

og får ra - ke leg - ger

Al - tid fø - ye seg al - tid kli - ve

al - tid no - ko ba - - kom hög - re

Sva Gasso ad lib

hög - - - re

blä - - - - nen vin - den og stjer - na det er kjø - leg

Perlande kring fjæ - nn



Den som held ut vil alltid finne.

Gunnar Sønsterøld

tekst Tarjei Vesaas

♩ = 96

Handwritten musical notation for the piano introduction of the first system. It features a treble and bass clef with a key signature of one sharp (F#). The music includes a 3/4 time signature, followed by a 4/4 section with a '4' above the staff, and then a 3/4 section with a '3' above the staff. The notation includes chords, single notes, and rests.

Han står på hei - te be - rg - veg - ger

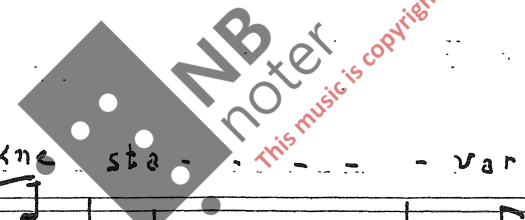
Handwritten musical notation for the second system, including vocal melody and piano accompaniment. The vocal line is on a treble clef staff with lyrics 'Han står på hei - te be - rg - veg - ger'. The piano accompaniment is on a bass clef staff with a key signature of one sharp. The system includes a 'ff' dynamic marking and a 'v' (accent) marking.

med spru - kne sta - var omatt og

Handwritten musical notation for the third system, including vocal melody and piano accompaniment. The vocal line is on a treble clef staff with lyrics 'med spru - kne sta - var omatt og'. The piano accompaniment is on a bass clef staff with a key signature of one sharp. The system includes a '3' time signature, a '4' time signature, and a '3' time signature.

o - m - o - d - e

Handwritten musical notation for the fourth system, including vocal melody and piano accompaniment. The vocal line is on a treble clef staff with lyrics 'o - m - o - d - e'. The piano accompaniment is on a bass clef staff with a key signature of one sharp. The system includes a '3' time signature, a '4' time signature, and a '3' time signature.



$\text{♩} = 60$
 Han skal få sin drykk ein-gang

$\text{♩} = 96$
 Han slår på flint-hår-de Berg med

na . . . kne ha . . . der

val-mån-de hen-der $\text{♩} = 60$ og op-ne seg

Skäl Jäk eingång $\text{♩} = 146$

Piu mosso
Om mat-ta slårhan i blin-de

På deiveldige berg som bur i mörkret dä

len-glam og torsten kjen-nest ti fæd

rit 4/4 3 tempo 4

Men han skal

$\text{♩} = 60$ mp P

finne vahn ein-gong Kon-vallen og

(flug.)

skogstierna står små ved Bergets fot og kjælda spring

3 Δ Harm.



DØRA GÅR OP

Gunnar Sønstevoid

tekst Tarjei Vesaas

♩ = 74

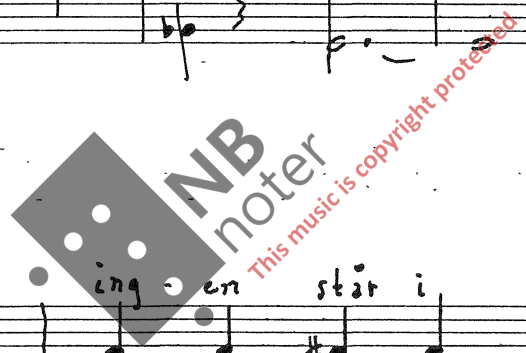
Handwritten musical notation for the first system. It features a treble clef and a 6/4 time signature. The music consists of several measures with notes, rests, and dynamic markings like 'mf'. There are also some handwritten annotations like 'x' and 'o' above notes.

Handwritten musical notation for the second system. It includes a treble clef and the lyrics "Dø - ra går". The notation shows notes corresponding to the lyrics, with some handwritten annotations like 'x' and 'o'.

Handwritten musical notation for the third system. It includes a treble clef and the lyrics "ing - en står i op et". The notation shows notes corresponding to the lyrics, with some handwritten annotations like 'x' and 'o'.

Handwritten musical notation for the fourth system. It includes a treble clef and the lyrics "alt no - -". The notation shows notes corresponding to the lyrics, with some handwritten annotations like 'x' and 'o'.

x = Pi 3



Knap-pe-ni-La-ne gell sing-land-e i gol-vet.

Handwritten musical notation for the first system. The vocal line (treble clef) contains the lyrics "Knap-pe-ni-La-ne gell sing-land-e i gol-vet." The guitar accompaniment (bass clef) includes fret numbers (3, 4, 4, 4, 3, 0) and chord diagrams with 'x' marks indicating muted strings.

secund secund

Handwritten musical notation for the second system. The vocal line (treble clef) contains the lyrics "secund secund". The guitar accompaniment (bass clef) includes fret numbers (0, 0) and chord diagrams with 'x' marks.



ris det no-kon med mó-de

Handwritten musical notation for the third system. The vocal line (treble clef) contains the lyrics "ris det no-kon med mó-de". The guitar accompaniment (bass clef) includes a 6/4 time signature, fret numbers (0, 0), and chord diagrams with 'x' marks.

fra den beste sto-len: Ja-vel

Handwritten musical notation for the fourth system. The vocal line (treble clef) contains the lyrics "fra den beste sto-len: Ja-vel". The guitar accompaniment (bass clef) includes fret numbers (0, 10) and chord diagrams with 'x' marks.

sai er han Ja vel, sa han? Han

er alt bor - te Vi

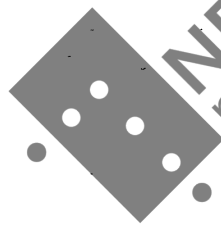
sti - rer stivt et - ter han ♩ = 100 Det

sta - nsa Glo - det stupensig gjen - nom klaff og



kam - mer

♩ = 74



NB noter

This music is copyright protected

Kven vil vente på ein tapar.

Gunnar Sønstevoid

tekst Tarjei Vesaas

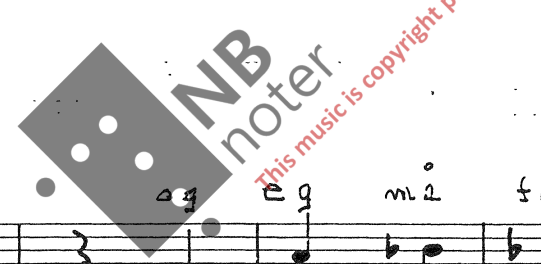
Sit: $\text{♩} = 120$

S. En - no ein song fram - no - ver

Eg mi ve - ra ven - ta Eg har et halvt

hjar - te eg mi fram

og der stame



ma det væ - r e i ha - - - nd no - ko ø

ha - - - e de og det har

hast ha - øt

Tomt er mitt Liv-

4 mf Agitato

Halvt er mitt Liv. Fort går mitt Liv.

Handwritten musical notation for the first system. It consists of two staves: a treble clef staff and a bass clef staff. The treble staff contains a melody with notes and rests, including a '2' above a note. The bass staff contains accompaniment with chords and moving lines. There are some handwritten annotations like '3' and '4' near the bass staff.

L2 meq fram TIL

Handwritten musical notation for the second system. It features two staves. The treble staff has a melody with a 'p' dynamic marking. The bass staff has accompaniment with a '3' above a triplet and a 'f' dynamic marking. There are also some handwritten annotations like '4' and '4'.

na kon som ven-tar eit kvart om det så er halv-tomt

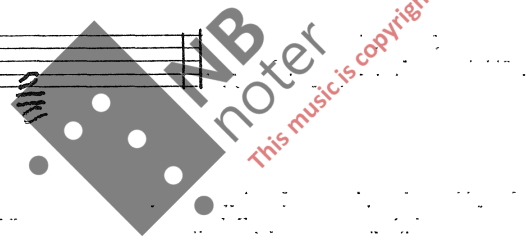
Handwritten musical notation for the third system. It consists of two staves. The treble staff has a melody with notes and rests, including a '3' above a triplet. The bass staff has accompaniment with chords and moving lines. There are some handwritten annotations like '4', '4', and '3'.

so-m mitt

Handwritten musical notation for the fourth system. It features two staves. The treble staff has a melody with notes and rests, including a '2' above a note. The bass staff has accompaniment with chords and moving lines. There is a 'ff' dynamic marking and some handwritten annotations like '3' and '4'.

Handwritten musical score for voice and piano. The top staff is for the voice (S) and the bottom staff is for the piano (P). The music is in 4/4 time and features lyrics in French: "Eg ma ve-ri-tes et i den-ne". Dynamics include *f*, *mf*, and *p*.

Handwritten musical notation for a keyboard instrument, possibly a harpsichord or lute, with a treble clef and a key signature of one flat. The notation includes a whole note and a half note.



Når stilla blir farleg

Gunnar Sønstevoid

tekst: Tarjei Vesaas

Når sti - lla blir fa - rleg

♩ = 76

6/4

3/4

4

sei - - er det in₃ni oss med ro - - eg røyst

3/4

4

4

Vi er her men er du

3

3

Vi må ikkje sva - ra men vi

3

#

#

skielv av vis-se vi kunne svare } 2 og vi

Handwritten musical notation for the first system. The treble staff contains a melody with notes and rests, including a triplet of eighth notes. The bass staff provides accompaniment with chords and single notes. A '2' is written above the treble staff, and a '3' is written below the treble staff.

tei-er vi-da-re Samen med det det u - kjemte

Handwritten musical notation for the second system. The treble staff features a melody with several triplet markings. The bass staff has chords and rests. A '3' is written above the treble staff, and a '4' is written below the bass staff.



s lik ein dei - er når ein li

Handwritten musical notation for the third system. The treble staff has a melody with a triplet. The bass staff has chords and rests. A '4' is written above the treble staff, and a '3' is written below the bass staff.

Kam-erat-skap skal fa-ra langt

Handwritten musical notation for the fourth system. The treble staff has a melody with a triplet. The bass staff has chords and rests. A '3' is written below the treble staff, and a 'ppp' dynamic marking is present in the bass staff.

Når lenger en langt er f 2 - re

Musical notation for the first system. The vocal line consists of quarter and eighth notes. The piano accompaniment features chords and arpeggiated figures. Fingerings are indicated with numbers 2, 3, and 4.

Sei er det Vi er her Plent som før er

Musical notation for the second system. The vocal line has a triplet of eighth notes. The piano accompaniment includes chords and moving lines.

du 1 a - - - 2 ag så Vi - - -

Musical notation for the third system. The vocal line has a long note with a fermata. The piano accompaniment features chords and arpeggiated figures. A watermark 'NB noter' and 'This music is copyright protected' is visible over the system.

Plent som før Det skjebni oss.

Musical notation for the fourth system. The vocal line has a triplet of eighth notes. The piano accompaniment includes chords and moving lines. The system ends with a double bar line.