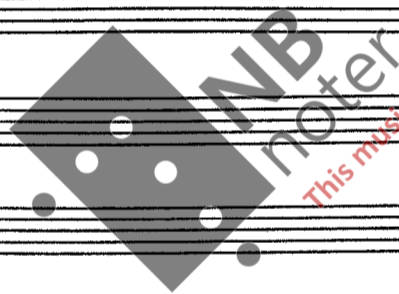


"Hornvinderne"

an film av Nicole Maë

Åpning, Spor I

2' 20"



This music is copyright protected

Spor I

♩ = 60

4"

8"

12"

16"

20"

24"

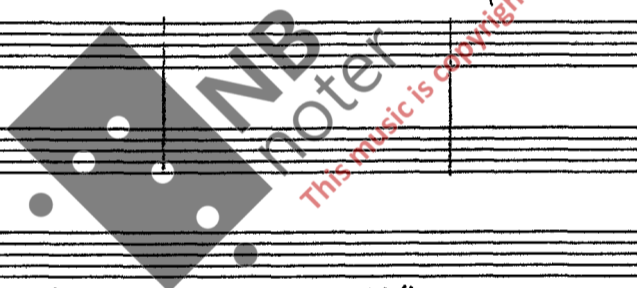
Flauto
Clarinetto
Basso
(Sib)
Clarinetti
Clarinetti
Clarinetti

Flauto: Fl zunge, gradvis til ord narro
Clarinetto Basso (Sib): P
Clarinetti/Clarinetti/Clarinetti: mp, ikke for jævnt, rolig; simile; P

28" 32" 36" 40" 44" 48"

Fl
Cl B
(Sib)
Clarinetti
Clarinetti
V
VC

Fl: Fl-zunge ord.
Cl B (Sib): ord
Clarinetti/Clarinetti/Clarinetti: ta daves; ta dimes; ta daves
V: mf
VC: mp



52" 56" 7' 7'04" 7'08"

Fl.
Cl B.
(Sib)
Clarinetti
Clarinetti
V
VC

Fl.: mp
Cl B. (Sib): P
Clarinetti/Clarinetti/Clarinetti: ta dimes; P
V: mf
VC: P

1'12"

1'16"

1'20"

1'24"

1'28"

1'32"

1'36"

Fl.

Cl. B
(Sib)

Claves
Claves

✓

VC

Handwritten musical score for Flute (Fl.), Clarinet Bb (Cl. B (Sib)), Claves, and Violoncello (VC). The score includes dynamic markings such as *p*, *>pp*, and *>ppp*, and articulation like accents and slurs. The Flute part has a melodic line with slurs and accents. The Claves part has a rhythmic accompaniment. The VC part has a bass line with slurs and dynamic markings.

1'40

1'44

1'48

1'52

1'56

2'

✓

VC

Handwritten musical score for Violoncello (VC). The score includes dynamic markings such as *p* and *legato*. The score is written in a single staff with a treble clef and a 7/8 time signature. The music features a melodic line with slurs and accents.

2'04

2'08

2'12

2'16

2'20

✓

VC

Handwritten musical score for Violoncello (VC). The score includes dynamic markings such as *p*. The score is written in a single staff with a treble clef and a 7/8 time signature. The music features a melodic line with slurs and accents.

♩ = 60

Åpning Spor II (innen etter 1'24")

cantabile

Fløyte *mykt ruggende, enkelt, som Satie*

Pft

*p p ped * ped. * sim*

Tu

Pft

Tu

Pft

57"

Overgang fra galleriet
(18 sek.)

$\text{♩} = 60$

3"

accelerando

14"

FL

A.B (Cb)

Violino

Violoncello

Pft

mp

legato, non crescendo

detached

un poco crescendo

"con grande espressione ..."

FL

Cl B (Cb)

Claves

V

VC

Pft

sf

f

mf

de 3 siste sek

toner ned ved spæker



"Fornyrderne"

Selskapene

Spor I 7' 59"

Tutti

(+spor II. klaver)

7)

Selskapsene
Spør I: inn etter 24"

Spør II:
P-ft

3" 6" 9" 12" 15"

♩ = 60 legato

P

pad pad simile

Fl.

Cl.
(Sib)

Glass
chimes

Grotaler

V

VC

P-ft.

18" 21" 24" 27" 30"

pp

pp

legato pp

pp un poco rit

Pft fortsetter Spør II

33"

36"

39"

42"

45"

48"

Fl.

Cl.
(Sib)

Glass
chimes
claves

Grotaler

V

VC

mf

pp

pp

pp

P

2)

51"

54"

57"

7'

7'03"

7'06"

7'09"

Fl.

Cl. (Sib)

Chimes claves

Octaler

V

VC

cantabile *mf* *legato*

0. 7'12" 7'15" 0. 7'18" 7'21" 7'24" 7'27" 0. 7'30"

Fl.

Cl. (Sib)

Chimes claves

V

VC

ta chimes

7'33" 0. 7'36" 0. 0. 0.

Fl.

Cl. (Sib)

Chimes claves

V

VC

legato *p*

♩ = 50

forts. sel slayer Spor I

3)

Exit
(slapover)

Fl.

Cl.
(Sib)

V

Vc

Handwritten musical score for the first system, featuring Flute (Fl.), Clarinet in B-flat (Cl. (Sib)), Violin (V), and Viola (Vc) staves. The music includes various notes, rests, and dynamic markings like "detache" and "mp".

diminuendo

Fl.

Cl.
(Sib)

V

Vc

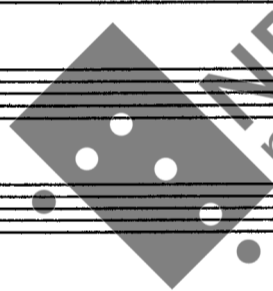
Handwritten musical score for the second system, continuing the instrumentation from the first system. It includes a "legato" marking and a tempo change to 7/59. A watermark "NB noter" and "This music is copyright protected" is visible over the score.

"Fomynderne"

klaverdel til

"Selskabet"

Spør II, ca 1' 30"



NB
noter

This music is copyright protected

Selskapene, Spor II (Særlig salongfæhig ---)

P-ft.

$\text{♩} = 60$ *un poco rit...* *al tempo, legato*

p *ped.* *ped.* *simile*

un poco rit. ---

*en tanke hurtigere *)* *un tempo*

mp

poco rit. --- hurtigere

mf

accelerando e crescendo

Ørten pause, for å unngå overlapping ved klipp

*) det fortæller i samme "dret", du kan godt variere harmoniseringen hvis det blir for kjedelig, men det skal ikke være for avansert. Typisk love-story-stil.

$\text{♩} = ca 108$

deze delen skal ligge vah/under
en annen instrumental del



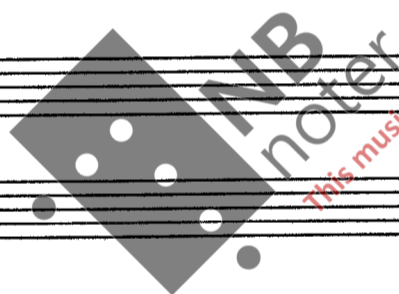


"Formynderne"

ASKER - "impression"

7' 45"

Flauto, Clarinetto Basso, Celesta



This music is copyright protected

$\text{♩} = 80$

Flauto

Celesta

Clarineto
Basso
(Sib)

**) begynner med raskt tilfelle, gradvis
langsommere, til ordinario*

Fl.

Celesta

Cl. B.
(Sib)

ca 44"

Fl.

Celesta

Cl. B.
(Sib)

un poco rit à tempo

ca 1'03"

Fl.

Celesta

A.B. (Srb)

Fl.

Celesta

A.B. (Srb)

her starter uddimning av celesta (med spæke)

ca 1'23"

Fl.

Celesta

A.B. (Srb)

Asker-impression forts.

1'45" ÷

Handwritten musical score for the first system, featuring three staves:

- Fl.** (Flute): Treble clef, key signature of one flat (B-flat). The melody consists of a series of eighth notes with slurs, starting on a B-flat and moving upwards.
- Selena** (Saxophone): Treble clef, key signature of one flat. The staff contains two whole rests.
- Cl.-B. (Sib)** (Clarinet in B-flat): Bass clef, key signature of one flat. The melody consists of a series of eighth notes with slurs, starting on a B-flat and moving upwards.

Empty musical staves for the second system, with some handwritten markings:

- Staff 1: A double bar line with a slash through it.
- Staff 2: A single note.
- Staff 3: A diamond-shaped watermark logo with the text "NB noter" and "this music is copyright protected" written diagonally across it.
- Staff 4: Three vertical lines.
- Staff 5: Three vertical lines.
- Staff 6: Two vertical lines.

P Å H O S P I T A L E T
 Talekor med skuespillere
 i lydstudio. Individuelle
 opptak.

FORLØP: 5" INTRODUKSJON SORL. 20" DISKONTINUERLIG
 HVISKING. 20" LAV TALE/HVISKING, VARIASJON AV INTO-
 NASJON, MED VEKT PÅ VOKALER. 5" OVERGANG TIL KONTI-
 NUERLIG HVISKING MED OVERDREVEVET FRAMHEVING AV KONSO-
 NANTER. 20" KONTINUERLIG HVISKING MED OVERDREVEVET
 FRAMHEVING AV KONSONANTER. 5" UTTONING.

STEMMER: Miks:

"Vi har det godt
 på hospitalet" I |—|

"Gå og legg deg,nå" . . 2 |—|

"Jeg skal hjem idag" . . 3 |—|

"Det er forbudt å . . . 4 |—|
 sitte i sengen"

"Gud...Jesus...
 ..Rasmussen..." 5 |—|

Hun som banner 6 |—|

SORL: hun som fløyter . 7 |—|
 lik en fugl. sovelyder,

klynking, skritt, som
 subber. Romklang.

p = hvisking, mp = myk tale, pf = hard hvisking

"Formynderne"

Ankomst til St. Jørgen

52"



This music is copyright protected

♩=80

- 7 -
Ankomst til St. Jørgen

Flauto
Clarinetto
Basso (Sib)
Piatto
Tamburo Militare
Tom Tom
Gr. C
Violino
Violoncello

Fl.
Cl. B.
(Sib)
Piatto
T. M.
Tom Tom
Gr. C
V
VC

Fl.
Cl. B.
(Sib)
Piatto
T. M.
Tom Tom
Gr. C
V
VC

- 2 - Antemmet St. Jorgen
crescendo

52"

Fl *rit*

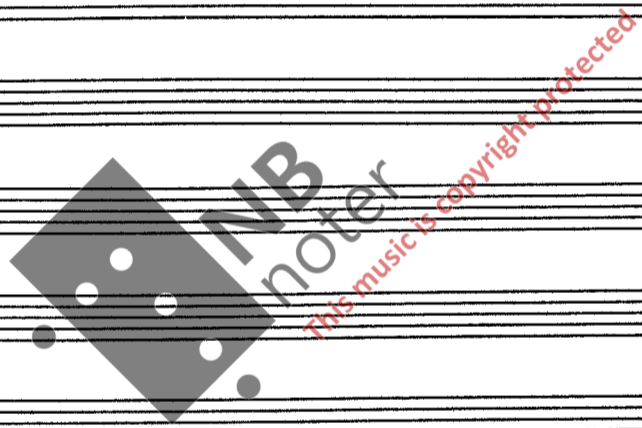
Cl.B (S.b)

Piatto T.M

Tonim Gr.C

V

VC





"Fornyrderne"

Dansen i parken

55"

Spør I og II

(separate optaks)

Spør I: Violino og Celesta

Spør II: Cello

ca 7 min

♩ = 80

Spor I
Violino

legato

Celista

ca 20"

V

Celista

♩ = 80

Spor II Cello

p

V

Celista

Cello

V

Cello

Cello

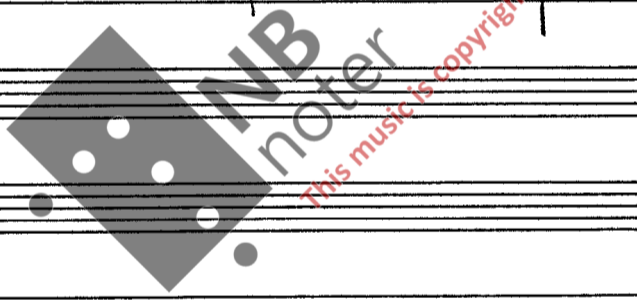
55" ÷

V

Cello

Cello

alt ca. 28-30"



♩ = 84

Cl. (Sib)
Vcllo

Cl. (Sib)
VC

Cl. (Sib)
VC

Cl. (Sib)
VC

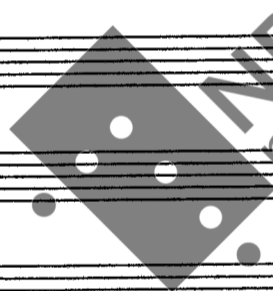
"Formy udeme"
Spasentur / mote

42"

"Fornyrderne"

Avslutning

2' 22"



This music is copyright protected

$\text{♩} = 60$

- 7 -

1. Ausstrahlung

Flauto
Clarinetto Basso (Sib)
Chimes Claves
Violino
Violon Cello

Fl.
Cl. B. (Sib)
Chimes Claves
V
VC

ca 22" $\text{♩} = 4$ à tempo

Fl.
Cl. B. (Sib)
Chimes Claves
V
VC

ca 43" *à tempo*

un poco rit

Fl.

Cl. B (Sib)

Claves

V.

VC

mp

p

un poco rit

à tempo

p

solo

espressivo

pp

Fl.

Cl. B (Sib)

Claves

V.

VC

pp

pp

pp

pp

pp

pp

pp

pp

pp

ca 7'26"

Fl.

Cl. B (Sib)

Claves

V.

VC

mf

mf

mf

mf

mf

3

SKALA Nr. 6

Fl. *Fl zuppa, al ordinario*

Cl. B. (Sib)

Chimes Claves *ta chimes*

V

VC

Fl. *f12*

Cl. B. (Sib)

Chimes Claves *ta claves* *ta chimes*

V

VC

3/22"

Fl.

Cl. B. (Sib)

Chimes Claves

V

VC

Stutt!