

Klaus Sandvik

The Line, the Wave and the Shadow

2018

Score



commissioned by Telemark Messingensemble

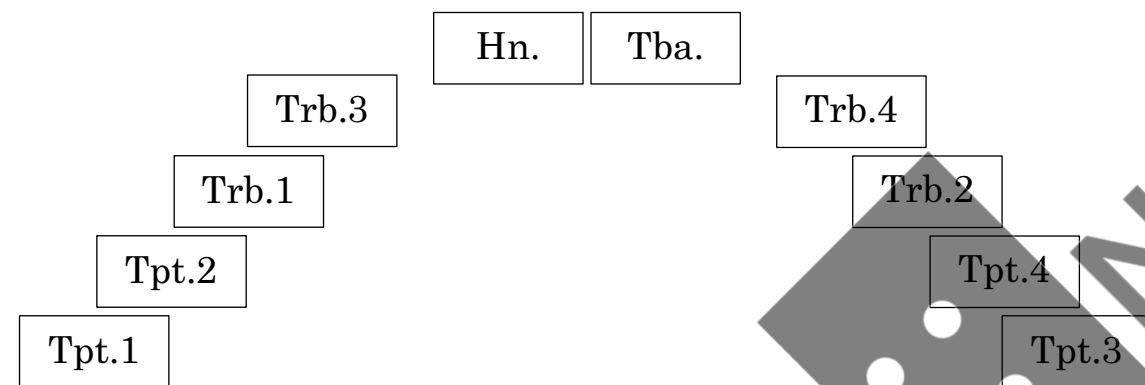
Dur. 7'

With support from



1. The Line
2. The Wave
3. The Shadow

Preferred stage setup for The Shadow:





NB
noter

This music is copyright protected

The Line, the Wave and the Shade

commissioned by Telemark Messingensemble

Klaus Sandvik 2018

Dur. 7'

The Line

1

2

3

4

5

5/4 ♩ = 120

Trumpet 1 in B♭
mf *p*

Trumpet 2 in B♭
mf *p*

Trumpet 3 in B♭
mf *p*

Trumpet 4 in B♭
p

Horn in F

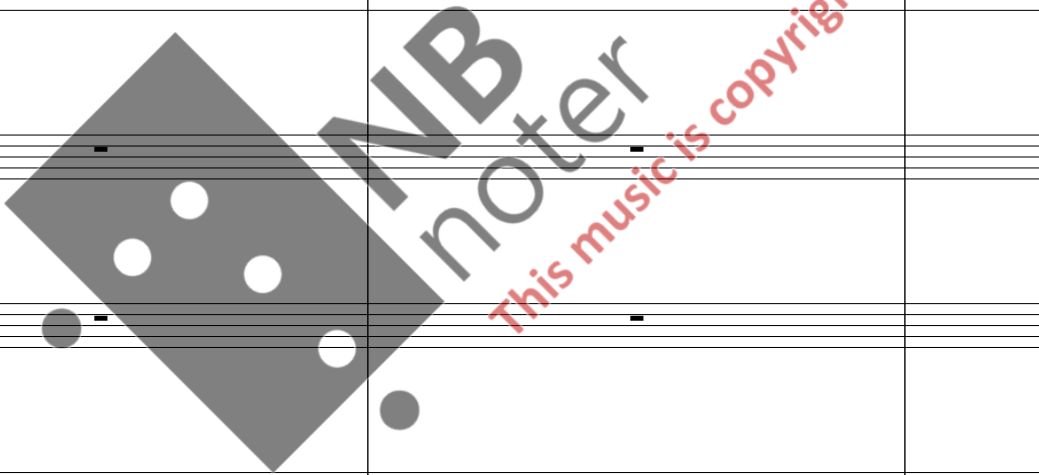
Trombone 1

Trombone 2

Trombone 3

Trombone 4

Tuba



A

Score for Tpt.1 (Bb), Tpt.2 (Bb), Tpt.3 (Bb), Tpt.4 (Bb), Hn. (F), Tbn.1, Tbn.2, Tbn.3, Tbn.4, and Tba.

Measures 6-10. Section A.

Instrument parts and dynamics:

- Tpt.1 (Bb): Continuous eighth-note patterns.
- Tpt.2 (Bb): Continuous eighth-note patterns.
- Tpt.3 (Bb): Continuous eighth-note patterns.
- Tpt.4 (Bb): Continuous eighth-note patterns.
- Hn. (F): *pp* (pianissimo) and *p* (piano) dynamics.
- Tbn.1: *p* (piano) and *pp* (pianissimo) dynamics.
- Tbn.2: *p* (piano) and *pp* (pianissimo) dynamics.
- Tbn.3: *p* (piano) and *pp* (pianissimo) dynamics.
- Tbn.4: *p* (piano) and *pp* (pianissimo) dynamics.
- Tba.: *p* (piano) and *pp* (pianissimo) dynamics.

Watermark: MB noter. This music is copyright protected.

B

Score for Tpt.1 (Bb), Tpt.2 (Bb), Tpt.3 (Bb), Tpt.4 (Bb), Hn. (F), Tbn.1, Tbn.2, Tbn.3, Tbn.4, and Tba.

Measures 11 to 15 are shown. The score includes various musical notations such as notes, rests, and dynamic markings (*pp*, *p*, *mf*).

Measures 11-12: Horns play a melodic line with dynamics *pp* and *p*. Tbn.1 plays a rhythmic pattern with dynamics *p* and *pp*. Tbn.2, Tbn.3, Tbn.4, and Tba. are silent.

Measures 13-15: Horns are silent. Tbn.1, Tbn.2, Tbn.3, Tbn.4, and Tba. play a rhythmic pattern with dynamics *mf* and *p*. Tbn.4 starts in measure 14 with dynamic *p*.

16

17

18

19

20

Score for Tuba and Trombone ensemble, measures 16-20. The score includes parts for Tpt.1 (Bb), Tpt.2 (Bb), Tpt.3 (Bb), Tpt.4 (Bb), Hn. (F), Tbn.1, Tbn.2, Tbn.3, Tbn.4, and Tba.

Measure 16: Tpt.1, 2, 3 play a melodic phrase starting on G4, moving to A4, Bb4, and A4. Dynamics: *p* (piano), *mf* (mezzo-forte), *p*. Tbn.1, 2, 3, 4 play a rhythmic pattern of eighth notes. Tbn.3 has an accent (>) on the final note. Tbn.4 has an accent (>) on the final note. Tba. is silent.

Measure 17: Tpt.1, 2, 3 play the same melodic phrase. Dynamics: *p*, *mf*, *p*. Tbn.1, 2, 3, 4 continue the rhythmic pattern. Tbn.3 has an accent (>) on the final note. Tbn.4 has an accent (>) on the final note. Tba. is silent.

Measure 18: Tpt.1, 2, 3 are silent. Tbn.1, 2, 3, 4 continue the rhythmic pattern. Tbn.3 has an accent (>) on the final note. Tbn.4 has an accent (>) on the final note. Tba. plays a melodic phrase starting on G3, moving to A3, Bb3, and A3. Dynamics: *mp* (mezzo-piano), *pp* (pianissimo).

Measure 19: Tpt.1, 2, 3 play a melodic phrase starting on G4, moving to A4, Bb4, and A4. Dynamics: *p*, *mf*, *p*. Tbn.1, 2, 3, 4 continue the rhythmic pattern. Tbn.3 has an accent (>) on the final note. Tbn.4 has an accent (>) on the final note. Tba. plays a melodic phrase starting on G3, moving to A3, Bb3, and A3. Dynamics: *mp*, *pp*.

Measure 20: Tpt.1, 2, 3 play a melodic phrase starting on G4, moving to A4, Bb4, and A4. Dynamics: *p*, *mf*, *p*. Tbn.1, 2, 3, 4 continue the rhythmic pattern. Tbn.3 has an accent (>) on the final note. Tbn.4 has an accent (>) on the final note. Tba. is silent.

Section C is marked at the beginning of measure 20.

Score for Tuba and Trombone parts, measures 21 to 25.

Measures 21-22: Tpt.1-4 (Bb) and Hn.(F) play a melodic line with dynamics *p* and *mf*. Tbn.1-4 play a rhythmic pattern with dynamics *pp*, *mf*, and *p*. Tba. is silent.

Measures 23-25: Tpt.1-4 (Bb) and Hn.(F) play a melodic line with dynamics *p* and *mf*. Tbn.1-4 play a rhythmic pattern with dynamics *mf*, *p*, and *pp*. Tba. is silent.

Watermark: MB noter. This music is copyright protected.

26

27

28

29

30

D

Score for Tpt.1 (Bb), Tpt.2 (Bb), Tpt.3 (Bb), Tpt.4 (Bb), Hn. (F), Tbn.1, Tbn.2, Tbn.3, Tbn.4, and Tba.

Measures 26-30. Dynamics include *p*, *mf*, *pp*, and *mp*. A large watermark "NB noter" and "this music is copyright protected" is visible across the score.

Measure 26: Tpt.1 (Bb) and Tpt.2 (Bb) play a melodic line starting on G4, moving to A4, Bb4, and A4. Tpt.3 (Bb) plays a similar line starting on F#4. Tbn.1, Tbn.2, Tbn.3, and Tbn.4 play a rhythmic pattern of eighth notes. Tbn.1 has an *mf* dynamic. Tbn.2 has an accent (>) on the first eighth note. Tbn.3 has an accent (>) on the first eighth note. Tbn.4 has an accent (>) on the first eighth note. Tbn.5 (Tba.) is silent.

Measure 27: Tpt.1 (Bb), Tpt.2 (Bb), and Tpt.3 (Bb) are silent. Hn. (F) plays a melodic line starting on G4, moving to A4, Bb4, and A4. Tbn.1, Tbn.2, Tbn.3, and Tbn.4 continue their rhythmic pattern. Tbn.1 has a *pp* dynamic. Tbn.2 has an *mp* dynamic. Tbn.3 has a *pp* dynamic. Tbn.4 has a *pp* dynamic. Tbn.5 (Tba.) is silent.

Measure 28: Tpt.1 (Bb), Tpt.2 (Bb), and Tpt.3 (Bb) are silent. Hn. (F) continues its melodic line. Tbn.1, Tbn.2, Tbn.3, and Tbn.4 continue their rhythmic pattern. Tbn.1 has a *pp* dynamic. Tbn.2 has an *mp* dynamic. Tbn.3 has a *pp* dynamic. Tbn.4 has a *pp* dynamic. Tbn.5 (Tba.) is silent.

Measure 29: Tpt.1 (Bb), Tpt.2 (Bb), and Tpt.3 (Bb) play a melodic line starting on G4, moving to A4, Bb4, and A4. Tbn.1, Tbn.2, Tbn.3, and Tbn.4 play a rhythmic pattern of eighth notes. Tbn.1 has an *mf* dynamic. Tbn.2 has an accent (>) on the first eighth note. Tbn.3 has an accent (>) on the first eighth note. Tbn.4 has an accent (>) on the first eighth note. Tbn.5 (Tba.) is silent.

Measure 30: Tpt.1 (Bb), Tpt.2 (Bb), and Tpt.3 (Bb) are silent. Hn. (F) is silent. Tbn.1, Tbn.2, Tbn.3, and Tbn.4 play a rhythmic pattern of eighth notes. Tbn.1 has an *mf* dynamic. Tbn.2 has an accent (>) on the first eighth note. Tbn.3 has an accent (>) on the first eighth note. Tbn.4 has an accent (>) on the first eighth note. Tbn.5 (Tba.) is silent.

E

Tpt.1 (B♭)

p

Tpt.2 (B♭)

mf *p*

(s)

Tpt.3 (B♭)

mf *p*

Tpt.4 (B♭)

mf *p*

(s)

Hn. (F)

Tbn.1

mp

p

Tbn.2

p

pp

Tbn.3

p

Tbn.4

p

Tba.

36

37

38

39

40

Score for Tpt.1 (Bb), Tpt.2 (Bb), Tpt.3 (Bb), Tpt.4 (Bb), Hn. (F), Tbn.1, Tbn.2, Tbn.3, Tbn.4, and Tba. The score is divided into measures 36 through 40. The key signature is Bb. The time signature changes from 3/4 to 4/4 at measure 40.

Measures 36-39 are in 3/4 time. Measure 40 is in 4/4 time.

Measures 36-39 contain complex rhythmic patterns for the trumpet parts, including eighth and sixteenth notes, and rests. The horn and tuba parts are mostly rests, with some notes in measure 40.

Measure 40 shows a change in the trumpet parts, with some notes and rests. The horn and tuba parts also have notes in this measure.

Watermark: NB noter This music is copyright protected

In memorian Trond Korsgård

The Wave

1

2

3

4

5

6

7

8

9

4/4 ♩ = 60

A

Score for Tpt.1 (Bb), Tpt.2 (Bb), Tpt.3 (Bb), Tpt.4 (Bb), Hn. (F), Tbn.1, Tbn.2, Tbn.3, Tbn.4, and Tba. (with mute). The score includes dynamic markings (pp, mp, p, mf, f) and a large watermark reading "INB noter" and "this music is copyright protected".

10

11

12

13

14

15

16

17

18

Score for Tuba and Trombone parts, measures 10 through 18. The score includes dynamics such as *f* (forte), *mf* (mezzo-forte), *mp* (mezzo-piano), and *f* (forte).

Parts shown:

- Tpt.1 (Bb)
- Tpt.2 (Bb)
- Tpt.3 (Bb)
- Tpt.4 (Bb)
- Hn. (F)
- Tbn.1
- Tbn.2
- Tbn.3
- Tbn.4
- Tba.

The score is marked with a large watermark: "This music is copyright protected".

19

20

21

22

23

24

25

26

27

28

B**C**

Score for Tuba and Trombone section, measures 19 to 28. The score is divided into two systems, B and C.

Measures 19-22 (System B):

- Tpt.1 (Bb):** f , mf , ff , mf , $< f$, mf , p
- Tpt.2 (Bb):** p , f , mf , ff , mf , $< f$
- Tpt.3 (Bb):** mf , ff , mp , mf
- Tpt.4 (Bb):** mf , ff , mf , mp , mf
- Hn. (F):** p , f , p , mf , $< f$, mp , mf
- Tbn.1:** p , f , mf , $< f$, mp , mf , p
- Tbn.2:** p , f , mf , ff , mf , $< f$, p
- Tbn.3:** f , mf , ff , mf , $< f$
- Tbn.4:** f , mf , ff , mf , $< f$, mf , p
- Tba.:** p , f , mp , mf , p

Measures 23-28 (System C):

- Tpt.1 (Bb):** $< mf$, mf , f
- Tpt.2 (Bb):** mf , p , f
- Tpt.3 (Bb):** p , mf
- Tpt.4 (Bb):** p , mf
- Hn. (F):** p , mf , p
- Tbn.1:** $< mf$, p , f
- Tbn.2:** $< mf$, p , mf , p , f
- Tbn.3:** mf , p , mf , p , f
- Tbn.4:** mf , p , mf , f
- Tba.:** $< mf$, p , f

29

30

31

32

33

34

35

36

37

Score for Tuba and Trombone section, measures 29 through 37. The score includes parts for Tpt.1 (Bb), Tpt.2 (Bb), Tpt.3 (Bb), Tpt.4 (Bb), Hn. (F), Tbn.1, Tbn.2, Tbn.3, Tbn.4, and Tba. The music features various dynamics and articulations.

Measures 29-37:

- Tpt.1 (Bb):** *ff* (29-30), *mf* < *f* (31), *mp* (32), *mf* (33), *f* (34), *mf* (35), *pp* (36-37).
- Tpt.2 (Bb):** *mf* (33), *mp* < *f* (34), *f* (35), *pp* (36-37).
- Tpt.3 (Bb):** *mp* (29), *ff* (30), *mf* < *f* (31), *p* (35), *mf* (36), *pp* (37).
- Tpt.4 (Bb):** *mp* (29), *ff* (30), *mf* < *f* (31), *mp* < *f* (34), *f* (35), *pp* (36-37).
- Hn. (F):** *mp* (29), *ff* (30), *mf* < *f* (31), *mp* (32), *mf* (33), *p* (35), *mf* (36), *pp* (37).
- Tbn.1:** *mp* (32), *mf* (33), *p* (35), *mf* (36), *pp* (37).
- Tbn.2:** *mp* (29), *ff* (30), *mf* < *f* (31), *mp* < *f* (34), *p* (35), *mf* (36), *pp* (37).
- Tbn.3:** *ff* (30), *mf* < *f* (31), *mf* (33), *mp* < *f* (34), *p* (35), *mf* (36), *pp* (37).
- Tbn.4:** *mp* (29), *ff* (30), *mf* < *f* (31), *mf* (33), *f* (34), *mf* (36), *pp* (37).
- Tba.:** *mp* (32), *mf* (33), *mp* < *f* (34), *f* (35), *pp* (36-37).

The Shadow

1

2

3

4

5

6

7

8

 $\frac{4}{4}$ ♩ = 72

Trumpet 1 in B \flat *mp*

Trumpet 2 in B \flat *mp*

Trombone 1 *mp*

Trombone 3 *mp*

Trumpet 3 in B \flat bucket mute *mp*

Trumpet 4 in B \flat bucket mute *mp*

Trombone 2 bucket mute *mp*

Trombone 4 bucket mute *mp*

Horn in F with mute / stopped [as mellow character as possible] *mp/p*

Tuba with mute *mp*

This music is copyright protected

This image shows a musical score for a tuba and trombone section, measures 1 through 6. The score is written for Tpt.1 (Bb), Tpt.2 (Bb), Tbn.1, Tbn.3, Tpt.3 (Bb), Tpt.4 (Bb), Tbn.2, Tbn.4, Hn. (F), and Tba. The notation includes various musical symbols such as notes, rests, and dynamic markings like *poco* and *mp*. A large, semi-transparent watermark is overlaid on the score, reading "NB noter" and "This music is copyright protected".

17

18

19

20

21

22

A

Score for Tuba and Trombone section, measures 17-22.

Instrument parts shown:

- Tpt.1 (Bb)
- Tpt.2 (Bb)
- Tbn.1
- Tbn.3
- Tpt.3 (Bb)
- Tpt.4 (Bb)
- Tbn.2
- Tbn.4
- Hn. (F)
- Tba.

Key markings and dynamics:

- Measure 19: *poco* (Tpt.3, Tpt.4, Tbn.2, Tbn.4)
- Measure 20: *poco* (Tbn.2, Tbn.4)
- Measure 21: *mp* (Tpt.3, Tbn.2, Tbn.4)

Watermark: NBNoter. This music is copyright protected.

29

34

A musical score for a piano piece, featuring a large, stylized 'NB' watermark and a red diagonal watermark reading 'This music is copyrighted'. The score is written on two staves, with the upper staff containing a melody and the lower staff containing a bass line. The melody is composed of eighth and sixteenth notes, while the bass line features a mix of eighth, sixteenth, and quarter notes. The piece is in a key with one flat (B-flat) and a 4/4 time signature. The watermark 'NB' is prominently displayed in the center, and the red text 'This music is copyrighted' is written diagonally across the score.