
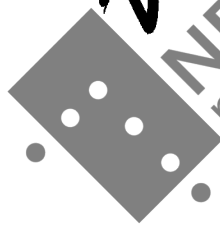


HENRIK SANDÉ 

DIE SUCHE DES NICHTS
NACH DEM ETWAS



NB
noter

This music is copyright protected

Besetzung (10 Spieler)

1. Flöte (Fl)

1. Oboe

1. Bass-klarinette (Bs.kl.)

1. Trompete (Trp)

1. Posaune (Pos)

Schlagzeug (1 Spieler)
1. Woodblock (medium) (1)
2. 3 Tam-toms
3. Pizatti (Becken) prante (1)

1 Violine (Vl)


1 Viola (Vla.)

1 Violoncello (cello)

1 Kontrabass (kb)

Anmerkungen

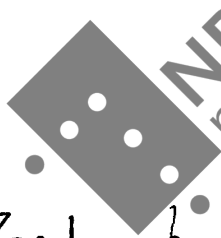
1. Violoncello:

: Dieses Zeichen heisst von geräuschhaften Klang durch starken Bopendruck bis ordinario (am Ende des Zeichen).

2. Violine und Violoncello.

von Takt 1 bis T. 111 möglichst leere Saiten streichen.

3. Ab T. 201 gilt das 'non vib' bis T. 234 wo in poco vib (ein wenig vibrato) zu spielen ist bis zum Ende.



NB
noter

This music is copyright protected

C-PARTITUR

DIE SÜNDEN DES NICHTS NACH DEWEETMAS

Henrik Sander

(♩ = 88 - 91)

Flöte

Oboe

Bass-
Klarinet

Trumpet

Posaune

Medium

Barock-
Klarinet

Orgel

Tutti

(♩ = 88 - 92)

affettuoso

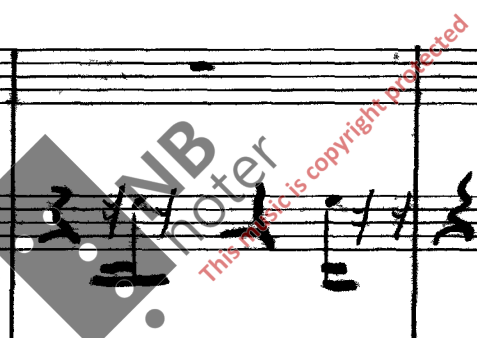
Violine

Viola

Violon-
cello

Kontraba-
ss

fff dim poco a poco
pizz.



2.

Fl. *mf* *ff*

Obs.

Bs. Kl. *m* *mf* *pp* *ff*

Trp.

Pos.

Wb.

TT.

Ph.

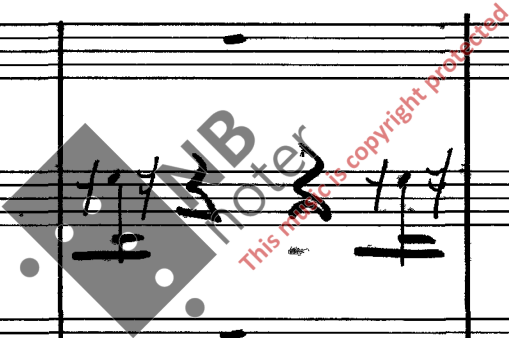
VI *f* *ff* *p* *pp* *f*

Vla.

Cell.

Kb. *ff* *p* *pp* *f*

E-SARTE
A-SARTE



This is a handwritten musical score for an orchestra and woodwinds. The score is organized into two systems. The first system includes staves for Flute (Fl.), Oboe (Ob.), Bassoon (Bsk.), Trumpet (Trp.), and Trombone (Pos.). The second system includes staves for Woodwind I (Wu I), Woodwind II (Wu II), Percussion (Pfl.), Violin I (Vi I), Violin II (Vi II), Cello (Cello), and Double Bass (Kb.). The notation is dense and includes various musical symbols such as notes, rests, slurs, and dynamic markings like *fff*, *mf*, *f*, *p*, and *pp*. There are also some handwritten annotations and a large watermark in the center that reads "NB noter This music is copyright protected".

4.

A

Handwritten musical score for the first system, including staves for Flute (Fl.), Oboe (Oboe), Bassoon (Bassoon), Trumpet (Trp.), and Percussion (Perc.). The score features complex rhythmic patterns, including triplets and sixteenth notes, and dynamic markings such as *mf*, *f*, and *fff*. A large watermark is visible across the middle of the page.

Handwritten musical score for the second system, including staves for Woodwind (Wd.), Trombone (T.T.), and Piano (Pia.). The score features complex rhythmic patterns, including triplets and sixteenth notes, and dynamic markings such as *mf*, *f*, and *fff*. A large watermark is visible across the middle of the page.

A

Handwritten musical score for the third system, including staves for Violin (VI.), Viola (Vla.), Cello (Cello), and Double Bass (Cb.). The score features complex rhythmic patterns, including triplets and sixteenth notes, and dynamic markings such as *pp*, *f*, and *fff*. A large watermark is visible across the middle of the page.

A

fff dim. poco a poco

Handwritten musical score for Flute (Fl), Oboe (Oboe), Bassoon (Bs.k.), Trumpet (Trp.), and Trombone (Pos.).

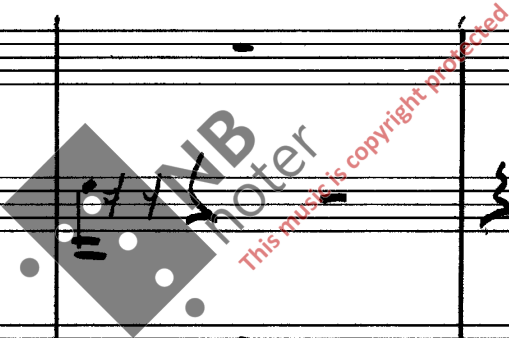
Measures 13, 14, and 15 are shown. The Flute part features complex rhythmic patterns with triplets and sixteenth notes. The Oboe part has a melodic line with slurs and accents. The Bassoon part provides harmonic support with chords and moving lines. The Trumpet and Trombone parts have rhythmic accompaniment.

Handwritten musical score for Woodwind instruments: Woodwind (Wd), Clarinet (Cl.), and Piccolo (Pic.).

Measures 13, 14, and 15 are shown. The Clarinet part has a melodic line with slurs and accents. The Piccolo part has a rhythmic accompaniment.

Handwritten musical score for String instruments: Violin (Vl.), Viola (Vla.), Cello (Cello), and Double Bass (Kb.).

Measures 13, 14, and 15 are shown. The Violin and Viola parts have melodic lines with slurs and accents. The Cello part has a harmonic accompaniment with chords. The Double Bass part has a rhythmic accompaniment with triplets and slurs.



6.

Handwritten musical score for orchestra and strings, measures 16-19. The score is written on ten staves, with the following instruments indicated on the left:

- Flute (Fl.)
- Oboe (Ob.)
- Bassoon (Bsn.)
- Trumpet (Trp.)
- Poson (Pos.)
- Woodwinds (W.W.)
- Trombone (Tr.)
- Percussion (Pt.)
- Violin (Vi.)
- Viola (Vla.)
- Cello (Cello)
- Double Bass (Kb.)

The score includes various musical notations such as notes, rests, and dynamic markings. A large watermark "NB noter" is overlaid on the score, with the text "This music is copyright protected" written diagonally across it.

Measure 16: Flute has a trill (tr) and a fermata (f). Bassoon has a triplet (3) and a fermata (f). Trumpet has a fermata (f). Violin has a triplet (3) and a fermata (f). Viola has a fermata (f). Cello has a fermata (f). Double Bass has a triplet (3) and a fermata (f).

Measure 17: Flute has a triplet (3) and a fermata (f). Bassoon has a triplet (3) and a fermata (f). Trumpet has a fermata (f). Violin has a triplet (3) and a fermata (f). Viola has a fermata (f). Cello has a fermata (f). Double Bass has a triplet (3) and a fermata (f).

Measure 18: Flute has a triplet (3) and a fermata (f). Bassoon has a triplet (3) and a fermata (f). Trumpet has a fermata (f). Violin has a triplet (3) and a fermata (f). Viola has a fermata (f). Cello has a fermata (f). Double Bass has a triplet (3) and a fermata (f).

Measure 19: Flute has a triplet (3) and a fermata (f). Bassoon has a triplet (3) and a fermata (f). Trumpet has a fermata (f). Violin has a triplet (3) and a fermata (f). Viola has a fermata (f). Cello has a fermata (f). Double Bass has a triplet (3) and a fermata (f).

Handwritten musical score for a symphony orchestra, measures 19-21. The score includes staves for Flute (Fl), Oboe (Ob), Bassoon (Bsk), Trumpet (Tr), Percussion (Pos), Woodwinds (Wb, Tt, Pt), Violin (Vl), Viola (Vn), Cello (Cello), and Double Bass (Kb). The score features complex rhythmic patterns, triplets, and various dynamic markings such as *ff*, *mf*, *pp*, *p*, and *pizz.* A large watermark "NB noter" is visible across the middle of the page.

8. **B**

Fl. ²² ²³⁻³ ²⁴

Oboe

Bs. Cl.

Trp.

Pos.

W. Bl.

T. T.

P. C.

B

Vi. ³ ³ ²³ ²⁴ ³

Vla.

Cello

Kb. *arco* *pizz* *ff* *dim poco a poco* *arco* *pizz*

B

NB noter
This music is copyright protected

Handwritten musical score for Flute (Fl), Oboe (Ob), Bassoon (Bsk), Trumpet (Trp), and Percussion (Pos). The score is divided into three measures, with measure numbers 25, 26, and 27 indicated. The Flute part features complex rhythmic patterns with slurs and accents. The Oboe part has a long, sustained note in the second measure. The Bassoon part includes triplets and dynamic markings like *pp* and *mf*. The Trumpet part has a few notes in the third measure. The Percussion part shows a simple rhythmic pattern.

Handwritten musical score for Woodwind instruments: Woodwind I (Wb), Woodwind II (Tt), and Piccolo (Pic). All three staves are mostly empty, with a few notes in the second measure. A large watermark is overlaid on this section, reading "MIB Inter" and "This music is copyright protected".

Handwritten musical score for Violin (Vl), Viola (Vla), Cello (Cdo), and Double Bass (Kb). The Violin part has a melodic line with slurs and accents. The Viola part has a few notes. The Cello part has a long, sustained note. The Double Bass part includes dynamic markings like *arco* and *pizz.* and features a triplet in the first measure.

10.

Flute (Fl) staff with measures 28, 29, and 30. Measure 29 includes fingering numbers 5, 3, 7, 6 and dynamic markings *f* and *ff*. Measure 30 includes a dynamic marking *f*.

Oboe staff with a whole rest in measure 29.

Clarinet in B-flat (Cl Bb) staff with measures 28, 29, and 30. Measure 28 includes fingering numbers 5, 3 and dynamic markings *mp* and *f*. Measure 29 includes fingering numbers 5, 6 and dynamic markings *f* and *ff*. Measure 30 includes fingering numbers 7, 5, 5.

Trombone (Trp) staff with a whole rest in measure 29.

Trumpet (Pos) staff with a whole rest in measure 29.

Winds (Wbl) staff with a whole rest in measure 29.

Tuba (Tt) staff with a whole rest in measure 29.

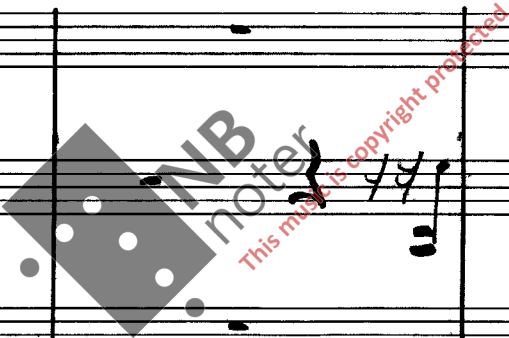
Percussion (Ptc) staff with a whole rest in measure 29.

Violin (Vln) staff with measures 28, 29, and 30. Measure 28 includes *pizz.*, *pp*, and *f*. Measure 29 includes *arco*, *p*, *mf*, and *f*. Measure 30 includes *ff*.

Viola (Vla) staff with a whole rest in measure 29.

Cello (Cello) staff with a whole rest in measure 29.

Double Bass (Kb) staff with measures 28, 29, and 30. Measure 28 includes fingering numbers 3, 3. Measure 29 includes *arco*. Measure 30 includes *pizz.* and *pp*.





Handwritten musical score for a symphony orchestra, page 11. The score includes staves for Flute (Fl.), Oboe (Ob.), Bassoon (Fag.), Trumpet (Tpt.), Trombone (Pos.), Woodwind Bass (Wob.), Trombone I (T.I.), Trombone II (T.II), Violin I (Vla.), Violin II (Vh.), Cello (Cello), and Double Bass (Kb.).

Key features of the score include:

- Flute (Fl.):** Measures 31-33. Measure 31 starts with a forte (*f*) dynamic. Measure 32 features a triplet. Measure 33 includes a circled 'C' and a triplet.
- Bassoon (Fag.):** Measures 31-33. Measure 31 has a pianissimo (*pp*) dynamic. Measure 32 has a fortissimo (*fff*) dynamic. Measure 33 has a mezzo-forte (*mp*) dynamic.
- Violin I (Vla.):** Measures 31-33. Measure 31 has a forte (*f*) dynamic. Measure 33 includes a circled 'C' and a pianissimo (*pp*) dynamic.
- Double Bass (Kb.):** Measures 31-33. Measure 31 has a forte (*f*) dynamic. Measure 32 has a *arco* marking. Measure 33 has a *pizz.* (pizzicato) marking.

A large watermark is present in the center of the page: "NB noter This music is copyright protected".

12.

Fl. ³⁴ ³ ³⁵ ³ ³⁶ ³ ³⁷

Obs.

Bs. ⁵ ⁵ ⁵ ⁵ ⁵ ⁵ ⁵

Trp.

Po.

Wbl.

TT.

Ptc.

Vi. ³⁴ ³⁵ ³⁶ ³⁷

Vla.

Cell. *sol pont.* *ordinario* *sol pont.*
f *dim. poco a poco*

Kb. *pizz.* *arco* *pizz.* *arco* *pizz.*
3 *3* *3*

Handwritten musical score for measures 38-41. The score includes staves for Flute (Fl.), Clarinet (Cl.), Bassoon (Pos.), Trumpet (Trp.), Trombone (Ttr.), Violin I (Vi.), Violin II (Vii.), Viola (Vla.), Cello (Cello), and Double Bass (Kb.).

Measures 38-41 are shown. The Flute part features complex rhythmic patterns with triplets and sixteenth notes. The Clarinet and Bassoon parts have similar rhythmic figures. The Trumpet and Trombone parts have rests in measures 38-40, followed by rhythmic patterns in measure 41. The Violin I and II parts have rests in measures 38-40, followed by rhythmic patterns in measure 41. The Viola part has rests in measures 38-40, followed by rhythmic patterns in measure 41. The Cello part has rests in measures 38-40, followed by rhythmic patterns in measure 41. The Double Bass part has rests in measures 38-40, followed by rhythmic patterns in measure 41.

Performance instructions include "ord. nro" (ordinario) and "sul tasto" (sul tasto) for the Cello part. Dynamic markings include "f", "ff", "pp", "pizz", and "arco".

14.



Fl. ⁴² *mf* *ff* *f*

Oboe *p* *ff*

Bskl. *pp* *sf* *pppp* *p* *sf* *pp*

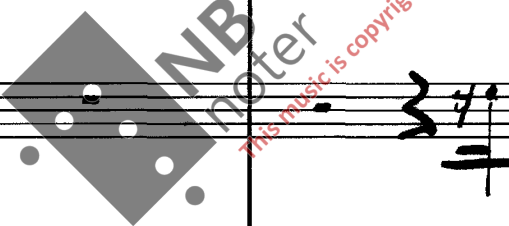
Trp

Pos.

W. bl.

TT.

Pfu.



Vi. ⁴² ⁴³ ⁴⁴ ⁴⁵ *pp* *ff* *p*

Vla.

Celb.

Kb. *pizz.* *arco* *pizz.*

V ordinario



Handwritten musical score for a symphony orchestra, measures 46-49. The score includes staves for Flute (Fl.), Oboe (Ob.), Bassoon (Bskl.), Trumpet (Trp.), Trombone (Pos.), Clarinet (Cl.), Bassoon (Cb.), Violin (Vl.), Viola (Vln), Cello (Cello), and Double Bass (Kb.). The score features various musical notations such as dynamics (f, sf, mp, p, ppp), articulation (accents, slurs), and performance instructions (arco, p.zz.). A large watermark 'NB noter' is visible across the middle of the page.

16.

50. 51. 52. 53.

Fl.

Oboe

Bkl.

Trp.

Pos.

Wbl.

T.T.

Fr.

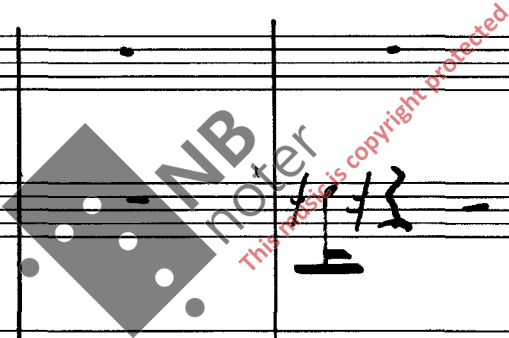
50. 51. 52. 53.

Vcllo.

Vi.

Celb.

Kb.



Handwritten musical score for the first system, measures 54-57. The score includes staves for Flute (Fl.), Oboe (Ob.), Bassoon (Bsn.), Trumpet (Trp.), and Trombone (Tbn.).

- Flute (Fl.):** Measures 54-57. Dynamics include *f*, *mf*, *p*, and *f*. Includes triplets and slurs.
- Oboe (Ob.):** Measures 54-57. Dynamics include *p* and *ff*. Includes slurs.
- Bassoon (Bsn.):** Measures 54-57. Dynamics include *ppp*, *f*, and *mp*. Includes triplets and slurs.
- Trumpet (Trp.):** Measures 54-57. Dynamics include *f*.
- Trombone (Tbn.):** Measures 54-57. Dynamics include *f*.

Measure numbers 54, 55, 56, and 57 are indicated above the staff. A boxed letter 'F' is present above measure 55.

Handwritten musical score for the second system, measures 54-57. The score includes staves for Violin I (Vln I), Violin II (Vln II), and Viola (Vla.).

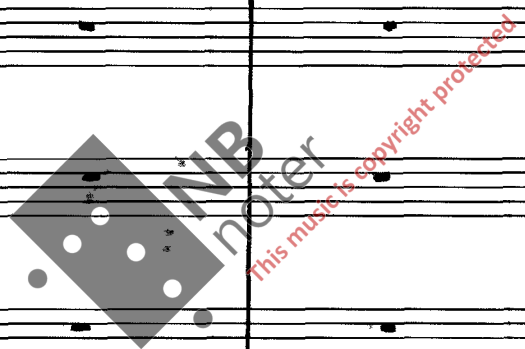
- Violin I (Vln I):** Measures 54-57. Dynamics include *pp*, *p*, *f*, *pp*, *ff*, *f*, and *ppp*.
- Violin II (Vln II):** Measures 54-57. Dynamics include *mf*.
- Viola (Vla.):** Measures 54-57. Dynamics include *mp*.

Measure numbers 54, 55, 56, and 57 are indicated above the staff. A boxed letter 'E' is present above measure 55.

Handwritten musical score for the third system, measures 54-57. The score includes staves for Violin I (Vln I), Violin II (Vln II), Viola (Vla.), and Cello/Double Bass (Cb.).

- Violin I (Vln I):** Measures 54-57. Dynamics include *pp*, *p*, *f*, *pp*, *ff*, *f*, and *ppp*.
- Violin II (Vln II):** Measures 54-57. Dynamics include *mf*.
- Viola (Vla.):** Measures 54-57. Dynamics include *mp*.
- Cello/Double Bass (Cb.):** Measures 54-57. Dynamics include *arco*, *pp*, and *arco*. Includes triplets and slurs.

Measure numbers 54, 55, 56, and 57 are indicated above the staff. A boxed letter 'E' is present below measure 55.



18TT

58.

59.

60

61

Handwritten musical score for the first system, including staves for Flute (Fl.), Oboe (Ob.), Clarinet (Cl.), Trumpet (Trp.), and Trombone (Pos.). The notation includes various notes, rests, and dynamic markings such as *mp*. A large watermark is present in the center of the page.

Handwritten musical score for the second system, including staves for Woodwind (Wb.), Trombone (Trb.), and Percussion (Pti.). The notation includes notes, rests, and dynamic markings. A large watermark is present in the center of the page.

Handwritten musical score for the third system, including staves for Violin (VI.), Viola (Vla.), Cello (Cello), and Double Bass (Cb.). The notation includes notes, rests, and dynamic markings such as *mp*, *pizz.*, and *arco*. A large watermark is present in the center of the page.

Handwritten musical score for the first system, measures 62-65. The staves include Flute 1, Oboe, Bassoon, Trumpet, Trombone, and Percussion. The Flute 1 part features complex rhythmic patterns with triplets and slurs, marked with dynamics such as *ff* and *p*. The Bassoon part includes triplets and slurs, marked with *f* and *mf*. The Percussion part shows a simple rhythmic accompaniment.

Handwritten musical score for the second system, measures 62-65. The staves include Violin I, Violin II, and Cello/Double Bass. The Violin I part has a few notes in measure 65. The Violin II part has a few notes in measure 65. The Cello/Double Bass part has a few notes in measure 65. A large watermark "NB noter" is overlaid on this system.

Handwritten musical score for the third system, measures 62-65. The staves include Violin I, Violin II, Cello/Double Bass, and a bottom staff (likely Bassoon). The Violin I part has a few notes in measure 62, marked with *mf*. The Violin II part has a few notes in measure 64. The Cello/Double Bass part has a few notes in measure 64. The bottom staff has a few notes in measure 62, marked with *arco* and *pizz*.

20.

F

Handwritten musical score for the first system, measures 66-70. The score includes staves for Flute (Fl.), Oboe (Ob.), Bassoon (Bsn.), Trumpet (Trp.), and Trombone (Tbn.).

- Flute (Fl.):** Measures 66-70. Measure 66 starts with a dynamic of *mf*. Measure 67 has a triplet of eighth notes. Measure 68 has a triplet of eighth notes. Measure 69 has a dynamic of *f*. Measure 70 has a dynamic of *pp*.
- Oboe (Ob.):** Rests in measures 66-70.
- Bassoon (Bsn.):** Measures 66-70. Measure 66 has a dynamic of *mf*. Measure 67 has a dynamic of *mf*. Measure 68 has a dynamic of *mf*. Measure 69 has a dynamic of *mf*. Measure 70 has a dynamic of *mf*.
- Trumpet (Trp.):** Rests in measures 66-70.
- Trombone (Tbn.):** Rests in measures 66-70.

Handwritten musical score for the second system, measures 66-70. The score includes staves for Violin I (Vln. I), Violin II (Vln. II), Viola (Vla.), Cello (Vcl.), and Double Bass (Cb.).

- Violin I (Vln. I):** Rests in measures 66-70.
- Violin II (Vln. II):** Rests in measures 66-70.
- Viola (Vla.):** Rests in measures 66-70.
- Cello (Vcl.):** Rests in measures 66-70.
- Double Bass (Cb.):** Rests in measures 66-70.

Handwritten musical score for the third system, measures 66-70. The score includes staves for Violin I (Vln. I), Violin II (Vln. II), Cello (Vcl.), and Double Bass (Cb.).

- Violin I (Vln. I):** Measures 66-70. Measure 66 has a dynamic of *mf*. Measure 67 has a dynamic of *mf*. Measure 68 has a dynamic of *mf*. Measure 69 has a dynamic of *mf*. Measure 70 has a dynamic of *mf*.
- Violin II (Vln. II):** Measures 66-70. Measure 66 has a dynamic of *mf*. Measure 67 has a dynamic of *mf*. Measure 68 has a dynamic of *mf*. Measure 69 has a dynamic of *mf*. Measure 70 has a dynamic of *mf*.
- Cello (Vcl.):** Measures 66-70. Measure 66 has a dynamic of *mf*. Measure 67 has a dynamic of *mf*. Measure 68 has a dynamic of *mf*. Measure 69 has a dynamic of *mf*. Measure 70 has a dynamic of *mf*.
- Double Bass (Cb.):** Measures 66-70. Measure 66 has a dynamic of *mf*. Measure 67 has a dynamic of *mf*. Measure 68 has a dynamic of *mf*. Measure 69 has a dynamic of *mf*. Measure 70 has a dynamic of *mf*.

F

Handwritten musical score for a symphony orchestra, measures 71-75. The score includes staves for Flute, Oboe, Bassoon, Trumpet, Trombone, Violin I, Violin II, Viola, and Cello/Double Bass. The music is in 2/4 time with a key signature of one sharp (F#). Measure 71 starts with a Flute entry. Measure 72 has a dynamic marking of *mp*. Measure 73 features a *f* dynamic marking and a *>* accent. Measure 74 includes a *p* dynamic marking. Measure 75 has a *mf* dynamic marking. The Cello/Double Bass part includes markings for *pizz.*, *arco*, and a triplet of eighth notes in measure 75. A large watermark for 'NB noter' is present in the center of the page, with the text 'This music is copyright protected' written diagonally across it.

22



76. 3 3 77. 78. 79. 3 80.

mf

Fl.

Oboe

Clarinet

Trumpet

Pos.

Violin I

Violin II

Viola



76. 77. 78. 79. 80.

pp

arco

pp

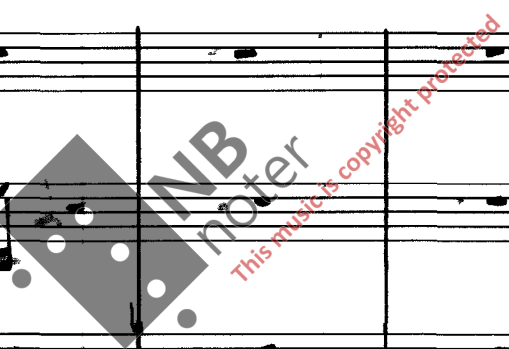
Violin I

Violin II

Viola

Cello

Double Bass



81. 82. 83. 84. 85.

Fl.

Oboe

Clarinet

Trp.

Pos.

ppp

pp

f

p

mp

81. 82. 83. 84. 85.

Violin

Viola

Cello

Double Bass

Watermark: NB noter This music is copyright protected

81. 82. 83. 84. 85.

Violin

Viola

Cello

Double Bass

246

Handwritten musical score for the first system, measures 86-90. The system includes five staves: Flute (top), Clarinet, Bassoon, Trumpet, and Trombone. Measure 86 is marked with a square box containing a stylized 'H' and the number '86'. Measure 87 is marked with '87'. Measure 88 is marked with a square box containing a stylized 'H' and the number '88'. Measure 89 is marked with '89'. Measure 90 is marked with '90'. Dynamics include *pp* and *f* with hairpins. A fermata is present in measure 90. A square box with a stylized 'H' is located at the bottom center of the page.

Handwritten musical score for the second system, measures 86-90. The system includes five staves: Flute, Clarinet, Bassoon, Trumpet, and Trombone. A large watermark is overlaid on this system, consisting of a grey diamond shape with the letters 'MIB' and 'PROST' inside, and the text 'This music is copyright protected' written diagonally across it. A square box with a stylized 'H' is located at the bottom center of the page.

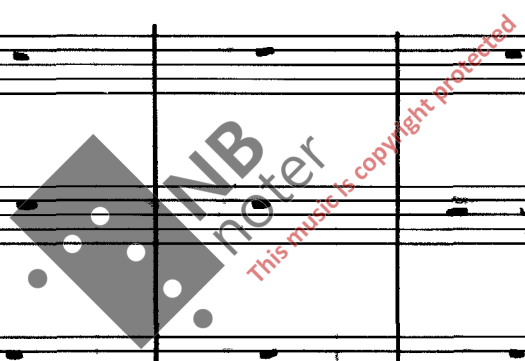
Handwritten musical score for the third system, measures 86-90. The system includes five staves: Flute, Clarinet, Bassoon, Trumpet, and Trombone. Measure 86 is marked with a square box containing a stylized 'H' and the number '86'. Measure 87 is marked with '87'. Measure 88 is marked with a square box containing a stylized 'H' and the number '88'. Measure 89 is marked with '89'. Measure 90 is marked with '90'. Dynamics include *pp* and *ff*. The word *flautando* is written in the Bassoon staff. A square box with a stylized 'H' is located at the bottom center of the page.

H

Handwritten musical score for the first system, measures 91-95. The staves include Flute (Fl.), Oboe (Ob.), Bassoon (Bs.), Trumpet (Trp.), and Trombone (Tos.). Measure 93 features a dynamic marking of *pp*. The notation includes various note values and rests.

Handwritten musical score for the second system, measures 91-95. The staves include Violin (Vl.), Viola (Vla.), and Cello (Cello). Measure 94 features a dynamic marking of *ppp*. The notation includes various note values and rests.

Handwritten musical score for the third system, measures 91-95. The staves include Violin (Vl.), Viola (Vla.), Cello (Cello), and Double Bass (Cb.). Measure 94 features a dynamic marking of *ppp* and the instruction *dim poco a poco*. The notation includes various note values and rests.



25

97 98 99 100

Fl. 1
Fl. 2
Cl.
Bsn.
Cello/Bass

Vl. 1
Vl. 2
Vla.

96 97 98 99 100

ppp *danno poco a poco*

v *sempre flaut.*

pppp

Vl. 1
Vl. 2
Vla.
Cello/Bass
Fl. 1

Handwritten musical score for the first system, measures 101-106. The staves are labeled: Fl., Picc., Bsn., Trp., and Pos. The Flute part features a melodic line with a *ppp* dynamic marking starting at measure 104. The Bassoon part has a *pp* marking at measure 102. The Trombone and Trumpet parts have rests. The Percussion part has a few notes.

Handwritten musical score for the second system, measures 101-106. The staves are labeled: Clarinet, Flute, and Piccolo. The Clarinet part has a *ppp* marking at measure 102. The Flute part has a *ppp* marking at measure 105. The Piccolo part has a *ppp* marking at measure 103. A large watermark "NB noter" is overlaid on this system.

Handwritten musical score for the third system, measures 101-106. The staves are labeled: Violin, Viola, Cello, and Double Bass. The Violin part has a *pppp* marking at measure 105. The Viola part has a *pppp* marking at measure 103. The Cello part has a *pppp* marking at measure 103. The Double Bass part has a *ppp* marking at measure 103. The Violin and Viola parts have melodic lines with slurs.

28



(♩ = 69-72)

107. 108. 109. 110. 111. 112.

pppp

lunga

lunga

lunga

lunga

lunga

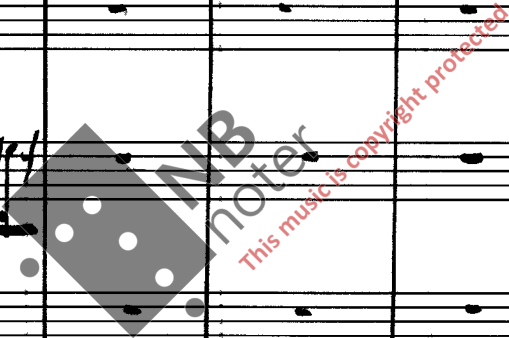
lunga

lunga

lunga

lunga

lunga



107 108 109 110 111 112 113 114 115 (♩ = 69-72)

pppp

(kaum hörbar)

pp

lunga

lunga

lunga

lunga

pppp

6-SAITE

5

lunga



01

114. 115. 116 117 118 119.

Viol. I. Viol. II. Viola.

114 115 116 117 118 119.

ppp mp pp mp

Wische Sägen 5

L.H. P. zt. *

arco

mp p

* Pizzicato mit der linken Hand
(am Greifbrett).

30.

120. 121. 122. 123. 124. 125.

Fl.
Ob.
B. Cl.
Trp.
Tos.

120. 121. 122. 123. 124. 125.

mp mf mp pp

mp pp

mp p

120. 121. 122. 123. 124. 125.

mp p

mp p

mp p

mp p

NB noter
This music is copyright protected

126 127 128. 129 130 131

Fl. Oboe B. Kl. Clar. Horn Trp. Tromb. Tuba Euphon.

Fl. Oboe B. Kl. Clar.

126 127. 128 129. 130 131

VI. I. VI. II. VA. Cella Kb.

2 pp mp L.H. pizz.* arco 5-7

C-Saite →

* siehe Seite 29



32

Handwritten musical score for measures 132-136. The score includes staves for Flute (Fl.), Oboe (Ob.), Bassoon (Bs.), Trumpet (Trp.), and Trombone (Tos.). The notation is sparse, with many rests and some notes. Measure numbers 132, 133, 134, 135, and 136 are written above the staves.

Handwritten musical score for measures 132-136. The score includes staves for Violin I (Vln. I), Violin II (Vln. II), and Viola (Vla.). The Viola part has more notation, including a melodic line starting in measure 134. A large watermark "ABR Noter" is overlaid on the score. The text "Harte Schlager" is written above the Viola staff in measure 134. Dynamic markings include *mf* and accents (>).

Handwritten musical score for measures 132-136. The score includes staves for Violin I (Vln. I), Violin II (Vln. II), Viola (Vla.), and Cello/Double Bass (Vcl./Cb.). The Violin I and II parts have more notation, including triplets and slurs. Dynamic markings include *pp* and *mf*. Measure numbers 132, 133, 134, 135, and 136 are written above the staves.

Handwritten musical score for a 12-piece ensemble. The score is divided into two systems, each containing six staves. The instruments are:

- 1. Flute (Fl.)
- 2. Clarinet (Clar.)
- 3. Bassoon (Bsn.)
- 4. Trumpet (Trp.)
- 5. Trombone (Tbn.)
- 6. Percussion (Perc.)
- 7. Violin (Vl.)
- 8. Viola (Vla.)
- 9. Cello (Cello)
- 10. Double Bass (Kb.)
- 11. Piano (P)
- 12. Conductor (C)

The score includes measures 137 through 141. Measure numbers 138, 139, 140, and 141 are explicitly labeled above the first staff of each system. The music features various rhythmic patterns, including triplets and sixteenth notes. A large watermark "MP noter" is overlaid on the score, with the text "This music is copyright protected" written diagonally across it. The page number "22" is written in the top right corner.

24. □

(♩ = 112-116)

9 10 12

142 143 144 145

142 □

145 (♩ = 112-116)

143 144 145

□

mf

Handwritten musical score for the first system, measures 146-150. The score includes staves for Flute (Fl.), Oboe (Oboe), Bassoon (B. H.), Trumpet (Trp.), Trombone (Pos.), Clarinet (Cl.), Bassoon (B.), and Piano (Pia.).

Measures 146-150 are marked with measure numbers 146, 147, 148, 149, and 150. The notation includes various notes, rests, and dynamic markings such as *mf* and *3f*. There are also some handwritten annotations and a large watermark in the center of the system that reads "INB noter This music is copyright protected".

Handwritten musical score for the second system, measures 146-149. The score includes staves for Violin I (Vln I), Violin II (Vln II), Cello (Cello), and Double Bass (Kb.).

Measures 146-149 are marked with measure numbers 146, 147, 148, and 149. The notation features long horizontal lines with circular accents, likely representing sustained notes or glissandi. Dynamic markings *mf* are present. The bottom two staves (Cello and Double Bass) have very faint or minimal notation.

35 150 151 152 153 Rit.

Flute: *mp*, *mf*, *mf*, *mf*
Clarinet: *mf*
Bassoon: *mf*
Trumpet: *mp*
Trombone: *mp*
Piano: *mp*

Violin I: *mf*
Violin II: *mf*
Viola: *mf*
Cello: *mf*

150. 151 152 153 Rit.

Violin I: *p*
Violin II: *p*
Viola: *mf*
Cello: *mf*

154 (♩ = 69-72) 155 156 157 158 159.

Fl.

Oboe

Clarinet

Trp.

Pos.

pp

mf

p

NB noter
This music is copyright protected

154 (♩ = 69-72) 155 156 157. 158 159.

Vi.

Vla.

Cello

Kb.

ppp

p

M

Handwritten musical score for measures 160-165. The score includes staves for Flute 1, Flute 2, Clarinet, Bassoon, Oboe, and Horns. Measure numbers 160, 161, 162, 163, 164, and 165 are indicated above the staves. The music features complex rhythmic patterns, including triplets and quintuplets, and dynamic markings such as *pp*, *f*, *mp*, *p*, and *mf*. A large watermark "NB noter" is visible across the middle of the page, with the text "This music is copyright protected" written diagonally below it.

Handwritten musical score for measures 160-165, continuing from the previous system. It includes staves for Violin I, Violin II, Cello, and Double Bass. Measure numbers 160, 161, 162, 163, 164, and 165 are indicated above the staves. The Cello part features a prominent melodic line with dynamic markings *f* and *ppp*. A "G-SITE" label is present above the Cello staff in measure 164. The Double Bass part has a melodic line with a dynamic marking of *ppp*. A large watermark "NB noter" is visible across the middle of the page, with the text "This music is copyright protected" written diagonally below it.

Handwritten musical score for the first system, measures 166-169. The score includes staves for Flute, Clarinet, Bassoon, Trumpet, Trombone, and Percussion. Measure 166 is marked with *mp*. Measure 167 features *ppp* dynamics. Measure 168 has *mp* and includes a *grc.* (grace note) marking. Measure 169 includes *mf* and a *3* (triple) marking. A dynamic crescendo is indicated from *p* to *f* in measure 168, followed by *mp* and *mf* in measure 169. A large watermark "IMB noter" and "This music is copyright protected" is overlaid on the score.

Handwritten musical score for the second system, measures 166-169. The score includes staves for Violin I, Violin II, Cello, and Double Bass. Measure 166 is marked with *pppp*. Measure 167 has *pppp*. Measure 168 has *mp* and includes a *grc.* (grace note) marking. Measure 169 includes *mp cresc.* and *al. ss.* (allargando) markings. A dynamic crescendo is indicated from *pppp* to *mp* in measure 168, followed by *mp cresc.* in measure 169. A large watermark "IMB noter" and "This music is copyright protected" is overlaid on the score.

40. (♩ = 112-116)

Handwritten musical score for orchestra and strings, measures 170-173. The score is written in a single system with multiple staves. The tempo is marked as ♩ = 112-116. The music is in a key with one sharp (F#) and a 2/4 time signature. The score includes various dynamics such as *fff*, *mf*, *f*, *pp*, *p*, and *mp*. There are also performance instructions like *gliss.* and *cresc.*. The score is heavily annotated with fingerings, slurs, and other performance markings. A large watermark "NB notes" is visible across the center of the page, with the text "This music is copyright protected" written diagonally across it.

Handwritten musical score for the first system, measures 174-177. The score includes staves for Flute (Fl.), Oboe (Ob.), Bassoon (Bs.), Trumpet (Trp.), and Trombone (Tbn.).

- Measure 174:** Flute and Oboe play a melodic line with a dynamic of *p*. Bassoon and Trumpet play a rhythmic accompaniment with a dynamic of *f*. Trombone has a whole rest.
- Measure 175:** Flute and Oboe continue with a dynamic of *f*. Bassoon and Trumpet continue with a dynamic of *mp*. Trombone has a whole rest.
- Measure 176:** Flute and Oboe play with a dynamic of *ff*. Bassoon and Trumpet play with a dynamic of *mp*. Trombone has a whole rest.
- Measure 177:** Flute and Oboe play with a dynamic of *mf*. Bassoon and Trumpet play with a dynamic of *p*. Trombone has a whole rest.

Handwritten annotations include fingerings (e.g., 3, 5, 5), slurs, and accents. A large 'N' in a box is written at the beginning of the system.

Handwritten musical score for the second system, measures 178-180. The score includes staves for Violin (Vl.), Viola (Va.), Cello (Cello), and Double Bass (Kb.).

- Measure 178:** Violin and Viola play a melodic line with a dynamic of *mf*. Cello and Double Bass play a rhythmic accompaniment with a dynamic of *f*.
- Measure 179:** Violin and Viola continue with a dynamic of *mf*. Cello and Double Bass continue with a dynamic of *f*.
- Measure 180:** Violin and Viola play with a dynamic of *mf*. Cello and Double Bass continue with a dynamic of *f*.

Handwritten annotations include fingerings (e.g., 3), slurs, and accents. A large 'N' in a box is written at the beginning of the system.

Handwritten musical score for the third system, measures 181-184. The score includes staves for Violin (Vl.), Viola (Va.), Cello (Cello), and Double Bass (Kb.).

- Measure 181:** Violin and Viola play a melodic line with a dynamic of *mf*. Cello and Double Bass play a rhythmic accompaniment with a dynamic of *f*.
- Measure 182:** Violin and Viola continue with a dynamic of *mf*. Cello and Double Bass continue with a dynamic of *f*.
- Measure 183:** Violin and Viola play with a dynamic of *mf*. Cello and Double Bass continue with a dynamic of *f*.
- Measure 184:** Violin and Viola play with a dynamic of *mf*. Cello and Double Bass continue with a dynamic of *f*.

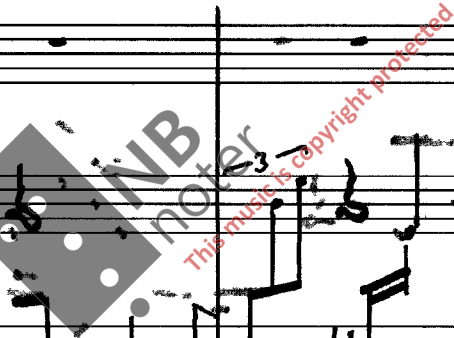
Handwritten annotations include fingerings (e.g., 4, 4, 4, 4, 4, 4, 4, 4), slurs, and accents. A large 'N' in a box is written at the beginning of the system.

412

Handwritten musical score for the first system, measures 178-181. The score includes staves for Flute, Clarinet, Bassoon, Trumpet, and Trombone. Measure 178 is circled and labeled "belgritte". A "Rit." (ritardando) marking is present above measure 180. Dynamic markings include *pp*, *mp*, and *ff*. Fingerings and slurs are indicated throughout the passages.

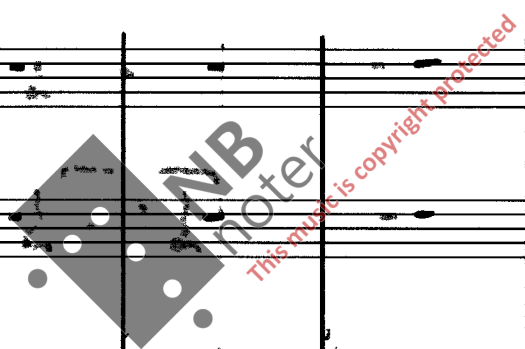
Handwritten musical score for the second system, measures 178-181. This system includes staves for Flute and Trombone. The notation continues from the first system, showing melodic lines and dynamic markings such as *pp* and *mp*.

Handwritten musical score for the third system, measures 178-181. This system includes staves for Violin I, Violin II, Viola, and Cello/Double Bass. Measure 178 is circled. A "Rit." marking is present above measure 180. Dynamic markings include *p*, *pp*, and *ppp*. The bottom staff shows a long note with a "91.55" marking.



Handwritten musical score for the first system, measures 182-187. The tempo is marked $\text{♩} = 69-72$. The score includes staves for Flute, Oboe, Bassoon, Trumpet, Trombone, and Percussion. Dynamics range from *ppp* to *mf*. Fingerings and articulations are indicated throughout.

Handwritten musical score for the second system, measures 182-187. The tempo is marked $\text{♩} = 69-72$. The score includes staves for Violin I, Violin II, Viola, and Cello/Double Bass. Dynamics range from *ppp* to *f*. A section marked "A. S. M. T. E." is indicated above measure 185. Fingerings and articulations are indicated throughout.



42

Handwritten musical score for the first system, measures 188-191. The score includes staves for Flute (Fl.), Oboe (Ob.), Bassoon (B.), Trumpet (Trp.), Trombone (Tbn.), and Percussion (P.).

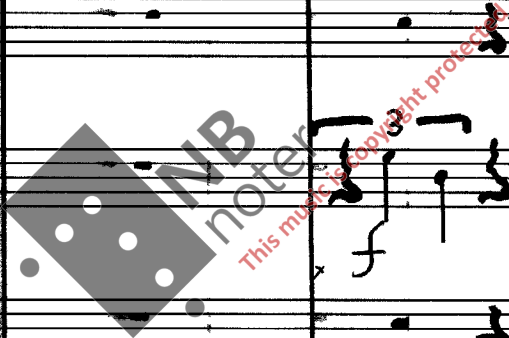
Measure 188: Flute has a triplet of eighth notes. Dynamics include *ff* and *pp*. Oboe has a dynamic of *f*. Bassoon has a dynamic of *f*. Trumpet has a dynamic of *f*. Trombone has a dynamic of *f*. Percussion has a dynamic of *ppp*.

Measure 189: Flute has a dynamic of *mf*. Oboe has a dynamic of *f*. Bassoon has a dynamic of *mf*. Trumpet has a dynamic of *f*. Trombone has a dynamic of *f*. Percussion has a dynamic of *f*.

Measure 190: Flute has a dynamic of *p*. Oboe has a dynamic of *f*. Bassoon has a dynamic of *mf*. Trumpet has a dynamic of *f*. Trombone has a dynamic of *f*. Percussion has a dynamic of *f*.

Measure 191: Flute has a dynamic of *mp*. Oboe has a dynamic of *f*. Bassoon has a dynamic of *mf*. Trumpet has a dynamic of *f*. Trombone has a dynamic of *f*. Percussion has a dynamic of *f*.

Other markings include *Gliss.* (Glissando) and various articulation marks.



Handwritten musical score for the second system, measures 188-191. The score includes staves for Violin (V.), Viola (Vla.), Cello (Cb.), and Double Bass (Kb.).

Measure 188: Violin has a dynamic of *f*. Viola has a dynamic of *f*. Cello has a dynamic of *f*. Double Bass has a dynamic of *f*.

Measure 189: Violin has a dynamic of *pp*. Viola has a dynamic of *pp*. Cello has a dynamic of *pp*. Double Bass has a dynamic of *pp*.

Measure 190: Violin has a dynamic of *ppp*. Viola has a dynamic of *ppp*. Cello has a dynamic of *ppp*. Double Bass has a dynamic of *ppp*.

Measure 191: Violin has a dynamic of *mp*. Viola has a dynamic of *mp*. Cello has a dynamic of *mp*. Double Bass has a dynamic of *mp*.

Other markings include *Gliss.* (Glissando) and various articulation marks.

Handwritten musical score for the first system, measures 192-195. The tempo is marked $\text{♩} = 112-116$. The score includes parts for Flute (Fl.), Oboe (Ob.), Bassoon (Bsn.), Trumpet (Trp.), Trombone (Tbn.), Percussion (Perc.), and strings. Dynamics range from *mf* to *fff*. The Flute part features complex rhythmic patterns and triplets. The Percussion part has a prominent triplet pattern. The strings play a rhythmic accompaniment with triplets.

Handwritten musical score for the second system, measures 192-195. The tempo is marked $\text{♩} = 112-116$. The score includes parts for Violin I (Vln I), Violin II (Vln II), Viola (Vla), Cello (Cello), and Double Bass (Kb.). Dynamics range from *pp* to *fff*. The Violin I and II parts feature glissando markings and dynamic changes. The Viola part has a prominent glissando. The Cello and Double Bass parts play a rhythmic accompaniment with triplets.

Handwritten musical score for a symphony orchestra, featuring multiple staves for various instruments. The score includes dynamic markings such as *ff*, *pp*, *mf*, and *ppp*, and performance instructions like *Rit.* (Ritardando). The notation includes complex rhythmic patterns, triplets, and a five-measure rest. The score is divided into measures 196, 197, and 198. A large watermark "MB noter" is visible across the center of the page, with the text "This music is copyright protected" written diagonally across it.

199. 200. 205. 210. 215. 220.

Handwritten musical score for strings and woodwinds. The score includes parts for Flute (Fl.), Clarinet (Clare.), Bassoon (Bass.), Trumpet (Trp.), and Trombone (Tos.).

- Flute:** Starts with a dynamic marking of *ff*. The notation includes a series of eighth notes with various accidentals (flats and naturals).
- Clarinet:** Starts with a dynamic marking of *fff*. The notation includes a series of eighth notes with various accidentals and triplet markings.
- Bassoon:** Starts with a dynamic marking of *ff*. The notation includes a series of eighth notes with various accidentals and triplet markings.
- Trumpet:** Starts with a dynamic marking of *mp*. The notation includes a series of eighth notes with various accidentals and triplet markings.
- Trombone:** Starts with a dynamic marking of *f*. The notation includes a series of eighth notes with various accidentals and triplet markings.

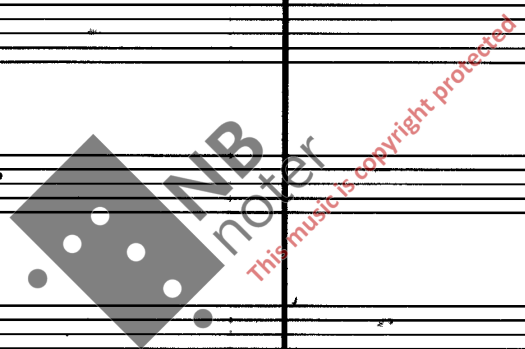
Dynamic markings include *ff*, *fff*, *ff*, *mp*, and *f*. Performance instructions include *diminuendo* and *mp cresc*. The score is divided into two measures, with measure numbers 199 and 200 indicated at the top.

Empty musical staves for Violin I (Vl. I), Violin II (Vl. II), and Piano (Pfi.).

Handwritten musical score for strings. The score includes parts for Violin I (Vl. I), Violin II (Vl. II), Viola (Vla.), and Cello/Double Bass (Cb.).

- Violin I:** Starts with a dynamic marking of *mf*. The notation includes a series of eighth notes with various accidentals and triplet markings.
- Violin II:** Starts with a dynamic marking of *mf*. The notation includes a series of eighth notes with various accidentals and triplet markings.
- Viola:** Starts with a dynamic marking of *mf*. The notation includes a series of eighth notes with various accidentals and triplet markings.
- Cello/Double Bass:** Starts with a dynamic marking of *mf*. The notation includes a series of eighth notes with various accidentals and triplet markings.

Dynamic markings include *mf* and *pp*. Performance instructions include *dim. poco a poco* and *mf arco*. The score is divided into two measures, with measure numbers 199 and 200 indicated at the top.



48. $f = (69-72)$ acc. ----- $(\text{♩} = 96-100)$ rit. -----

201. 202. 203. 204.

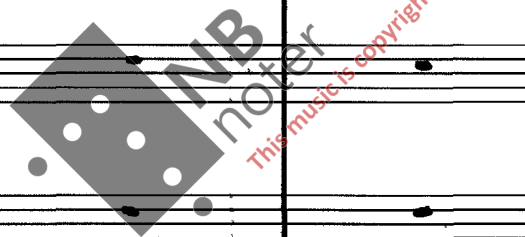
Fl. *mp* *f* *mp*

Oboe *mp* *pp*

Bassoon *mf*

Trombone *f* *mf*

Drum *f*



$f = (69-72)$ acc. ----- $(\text{♩} = 96-100)$ rit. -----

201. 202. 203. 204.

Violin *pp* *pp* *pp*

Viola *pp* *pp* *pp*

Cello *pp* *pp* *pp*

Double Bass *pp* *pp* *pp*

G-SAITE → *pp*

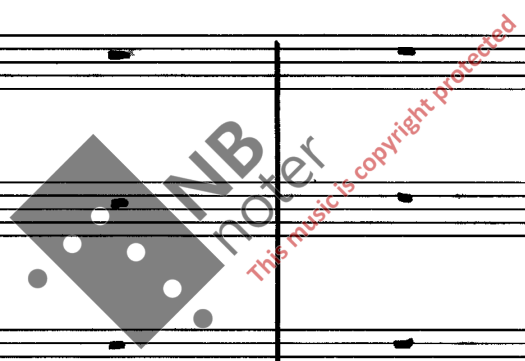
A-SAITE → *pp*

PK 1-48-52)

49.

Handwritten musical score for woodwinds and strings. The score includes staves for Flute (Fl.), Oboe (Ob.), Bassoon (B.s.), Trumpet (Trp.), and Trombone (Pos.).

- Flute (Fl.):** Treble clef, key signature of one sharp (F#). Measures 205-208. Includes triplets and slurs.
- Oboe (Ob.):** Treble clef, key signature of one sharp (F#). Measures 205-208. Includes triplets and slurs.
- Bassoon (B.s.):** Bass clef, key signature of one sharp (F#). Measures 205-208. Includes slurs and a *pp* dynamic marking.
- Trumpet (Trp.):** Treble clef, key signature of one sharp (F#). Measures 205-208. Includes slurs.
- Trombone (Pos.):** Bass clef, key signature of one sharp (F#). Measures 205-208. Includes slurs and a *pp* dynamic marking.



Empty musical staves for the lower woodwinds and brass instruments.

- Wb. (Wahls Horn):** Bass clef, key signature of one sharp (F#).
- T.T. (Trompete/Trombone):** Bass clef, key signature of one sharp (F#).
- Yt. (Tuba):** Bass clef, key signature of one sharp (F#).

(1-48-52)

Handwritten musical score for strings. The score includes staves for Violin (Vl.), Viola (Va.), Cello (Cell.), and Double Bass (Kb.).

- Violin (Vl.):** Treble clef, key signature of one sharp (F#). Measures 205-208. Includes slurs and a *p* dynamic marking.
- Viola (Va.):** Alto clef, key signature of one sharp (F#). Measures 205-208. Includes slurs.
- Cello (Cell.):** Bass clef, key signature of one sharp (F#). Measures 205-208. Includes slurs.
- Double Bass (Kb.):** Bass clef, key signature of one sharp (F#). Measures 205-208. Includes slurs.

Handwritten musical score for a symphony orchestra, measures 209-212. The score includes parts for Flute (Fl.), Oboe (Oboe), Bassoon (Bs. Kl.), Trumpet (Trp.), Trombone (Pos.), Woodwind (WB), Trumpet (TT), Percussion (Pt.), Violin (VI), Viola (Vn), Cello (Cb), and Double Bass (Kb).

Measures 209-212:

- Flute (Fl.):** Measures 209-210 are whole rests. Measure 211 starts with a half note G4 (marked *ppp*), followed by a half note A4 (marked *f*), and a half note B4 (marked *mp*) in measure 212.
- Oboe (Oboe):** Measures 209-210 are whole rests. Measure 211 starts with a half note G4 (marked *ppp*), followed by a half note A4 (marked *f*), and a half note B4 (marked *mp*) in measure 212.
- Bassoon (Bs. Kl.):** Measures 209-210 are whole rests. Measure 211 starts with a half note G4 (marked *ppp*), followed by a half note A4 (marked *f*), and a half note B4 (marked *mp*) in measure 212.
- Trumpet (Trp.):** Measures 209-210 are whole rests. Measure 211 starts with a half note G4 (marked *ppp*), followed by a half note A4 (marked *f*), and a half note B4 (marked *mp*) in measure 212.
- Trombone (Pos.):** Measures 209-210 are whole rests. Measure 211 starts with a half note G4 (marked *ppp*), followed by a half note A4 (marked *f*), and a half note B4 (marked *mp*) in measure 212.
- Woodwind (WB):** Measures 209-212 are whole rests.
- Trumpet (TT):** Measures 209-212 are whole rests.
- Percussion (Pt.):** Measures 209-212 are whole rests.
- Violin (VI):** Measure 209: G4 (marked *mf*). Measure 210: G4 (marked *mf*), A4 (marked *mf*), B4 (marked *mf*). Measure 211: G4 (marked *p*), A4 (marked *p*), B4 (marked *p*). Measure 212: G4 (marked *p*), A4 (marked *p*), B4 (marked *p*).
- Viola (Vn):** Measure 209: G4 (marked *mf*). Measure 210: G4 (marked *mf*), A4 (marked *mf*), B4 (marked *mf*). Measure 211: G4 (marked *p*), A4 (marked *p*), B4 (marked *p*). Measure 212: G4 (marked *p*), A4 (marked *p*), B4 (marked *p*).
- Cello (Cb):** Measure 209: G4 (marked *mf*), A4 (marked *mf*), B4 (marked *mf*). Measure 210: G4 (marked *mf*), A4 (marked *mf*), B4 (marked *mf*). Measure 211: G4 (marked *p*), A4 (marked *p*), B4 (marked *p*). Measure 212: G4 (marked *p*), A4 (marked *p*), B4 (marked *p*).
- Double Bass (Kb):** Measure 209: G4 (marked *mf*), A4 (marked *mf*), B4 (marked *mf*). Measure 210: G4 (marked *mf*), A4 (marked *mf*), B4 (marked *mf*). Measure 211: G4 (marked *p*), A4 (marked *p*), B4 (marked *p*). Measure 212: G4 (marked *p*), A4 (marked *p*), B4 (marked *p*).

Dynamic markings: *ppp*, *f*, *mp*, *mf*, *p*.

Performance instructions: *mp* (measures 211-212), *f* (measures 211-212).

Watermark: NB noter. This music is copyright protected.

213. 214 215 216.

Fl.

Oboe

Bs. Kl.

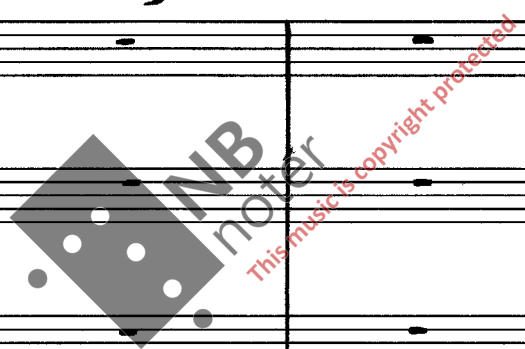
Trp.

Pos.

W. b.

TT

H.



213 214. 215. 216.

Vi.

Vla.

Celb.

Kb.

52.

217

218

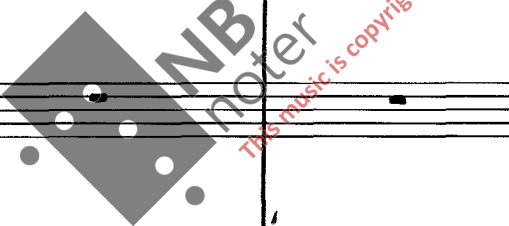
219



220.

Handwritten musical score for Flute (Fl), Oboe (Ob), Bassoon (Bsk), Trumpet (Tp), and Trombone (Pos). The score covers measures 217 to 220. Flute and Oboe parts feature melodic lines with triplets and slurs. Bassoon has a dynamic marking of *f*. Trumpet and Trombone parts are mostly rests with some notes in measure 218.

Handwritten musical score for Woodwind instruments: Clarinet in B-flat (W.b.), Clarinet in A (TT), and Piccolo (Pt). All three parts are mostly rests across measures 217 to 220.



Handwritten musical score for String instruments: Violin (Vi), Viola (Vln), Cello (Cello), and Double Bass (Kb). The score covers measures 217 to 220. Violin and Viola parts have melodic lines with triplets and slurs, and dynamic markings of *pp* and *p*. Cello and Double Bass parts are mostly rests with some notes in measure 219. A square box containing the letter Q is present at the end of measure 220.

221.

222

223.

224.

Handwritten musical score for the upper section, including staves for Flute (Fl.), Oboe, Bassoon (B.k.), Trumpet (Trp.), Percussion (Pss), Woodwind Bass (W.bl.), Trombone (T.T.), and Alto Saxophone (Al.).

Key annotations in this section include:

- Flute, Oboe, Bassoon, Trombone, Alto Saxophone, and Woodwind Bass: Rests.
- Trumpet: *pppp* in measure 221; *mf* in measure 224.
- Percussion: *mf* \rightarrow *mp* in measure 224.
- Watermark: "NB noter This music is copyright protected" is overlaid on the Trombone and Alto Saxophone staves.

221.

222

223.

224.

Handwritten musical score for the lower section, including staves for Violin (Vl.), Viola (Vla.), Cello (Cell.), and Double Bass (Cb.).

Key annotations in this section include:

- Violin, Viola, Cello, and Double Bass: Rests.
- Viola: *p* \rightarrow *mf* in measure 223.
- Cello: *p* in measure 221.
- Watermark: "NB noter This music is copyright protected" is overlaid on the Viola staff.

54.
225

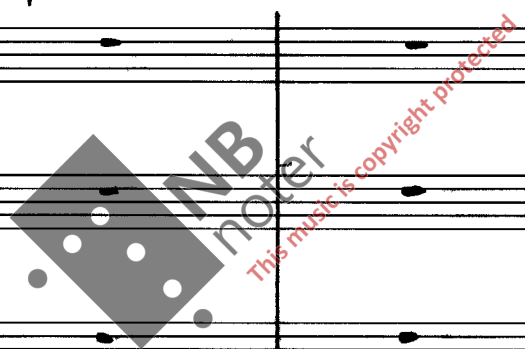
Handwritten musical score for woodwinds. The system includes parts for Flute (H), Oboe (Ob), Bassoon (Bkl), Trumpet (Tp), and Trombone (Pos). The score is divided into measures 226, 227, and 228. Dynamics include *pp*, *mf*, and *ppp*. The Flute and Oboe parts feature a melodic line with accidentals (sharps) and slurs. The Bassoon part has a more rhythmic line with slurs. The Trumpet and Trombone parts have sustained notes with dynamics *pp* and *ppp*.

Handwritten musical score for strings. The system includes parts for Violin (Vl.), Viola (Vla.), Cello (Cbl), and Double Bass (Kb). The score is divided into measures 225, 226, 227, and 228. The Violin part starts with a *ppp* dynamic in measure 225. The Viola, Cello, and Double Bass parts have sustained notes with dynamics *p* and *mf*. A large watermark is visible in the center of this section.

Handwritten musical score for strings. The system includes parts for Violin (Vl.), Viola (Vla.), Cello (Cbl), and Double Bass (Kb). The score is divided into measures 225, 226, 227, and 228. The Violin part has a *ppp* dynamic in measure 225. The Viola, Cello, and Double Bass parts have sustained notes with dynamics *p* and *mf*. A large watermark is visible in the center of this section.

Handwritten musical score for measures 229-232. The score is arranged in two systems. The first system includes Flute (H.), Oboe, Bassoon (B.), Trumpet (Tp.), Trombone (Pos.), Woodwind (Wb.), Tuba (T.T.), and Snare (Pl.). The second system includes Violin (VI.), Viola (Va.), Cello (Wlo.), and Double Bass (Ba.).

Measures 229-232 are marked with dynamic markings: *pp*, *ppp*, and *mp*. A triplet is indicated in measure 232. The score includes various musical notations such as slurs, accents, and articulation marks.



56. *acc.* ----- (♩ = 76-84)

Handwritten musical score for woodwinds and strings. The score is divided into four measures, with measure numbers 233, 234, 235, and 236 written above the staves. The instruments listed on the left are Flute (Fl.), Oboe, Bassoon (Fg.), Trumpet (Trp.), and Trombone (Pos.). The Flute part includes a *br* (breathe) marking in measure 234. The woodwinds play a melodic line with dynamics ranging from *f* (forte) to *mf* (mezzo-forte). The strings (Violin I, Violin II, Viola, Cello, and Double Bass) are mostly silent in this section, with some light accompaniment in measure 235. A large watermark "NB notes" is visible across the middle of the page.

233 *acc.* ----- (♩ = 76-84)

Handwritten musical score for strings. The score is divided into four measures, with measure numbers 233, 234, 235, and 236 written above the staves. The instruments listed on the left are Violin I (Vl.), Violin II (Vla.), Cello (Cb.), and Double Bass (Kb.). The strings play a melodic line with dynamics ranging from *f* (forte) to *mf* (mezzo-forte). The *mf* dynamic is consistently used across all measures. The text *un poco vib.* (un poco vibrato) is written above the staves in measures 234 and 235. The Double Bass part includes the instruction *D-SAITE* in measure 236. A large watermark "NB notes" is visible across the middle of the page.

Handwritten musical score for a symphony orchestra, measures 237-240. The score includes parts for Flute (Fl.), Oboe (Oboe), Bassoon (Bs. kl.), Trumpet (Trp.), Trombone (Trb.), Woodwinds (Wd.), Percussion (P.), Violin (Vl.), Viola (Vla.), Cello (Cb.), and Double Bass (Kb.).

Measures 237, 238, 239, and 240 are marked. A circled 'R' symbol is present above measure 240 and below measure 240. Dynamic markings include *pp* and *mp*. A watermark 'NB noter' is visible in the center.

58.
241

Handwritten musical score for orchestra, measures 241-244. The score is written in a single system with multiple staves. The instruments listed on the left are Flute (Fl.), Oboe (Oboe), Bassoon (Bskh.), Trumpet (Trp.), Trombone (Pos.), Woodwinds (Wbl.), Violin (Vl.), Viola (Vln.), Cello (Cbl.), and Double Bass (Kb.).

Measure 241: Flute, Oboe, Bassoon, and Trombone have notes with slurs. Trumpet has a triplet of eighth notes. Trombone has a dynamic marking of *mf* and a hairpin crescendo to *p*. Woodwinds, Violin, Viola, Cello, and Double Bass have whole notes with slurs.

Measure 242: Flute, Oboe, Bassoon, and Trombone have notes with slurs. Trumpet has a triplet of eighth notes. Trombone has a dynamic marking of *p* and a hairpin crescendo to *f*. Woodwinds, Violin, Viola, Cello, and Double Bass have whole notes with slurs.

Measure 243: Flute, Oboe, Bassoon, and Trombone have notes with slurs. Trumpet has a triplet of eighth notes. Trombone has a dynamic marking of *p* and a hairpin crescendo to *f*. Woodwinds, Violin, Viola, Cello, and Double Bass have whole notes with slurs.

Measure 244: Flute, Oboe, Bassoon, and Trombone have notes with slurs. Trumpet has a triplet of eighth notes. Trombone has a dynamic marking of *p* and a hairpin crescendo to *f*. Woodwinds, Violin, Viola, Cello, and Double Bass have whole notes with slurs.

Watermark: NB noter. This music is copyright protected.

Handwritten musical score for measures 245-248. The score includes staves for Flute (Fl.), Oboe (Oboe), Bassoon (Bskl.), Trumpet (Trp.), Trombone (Pos.), Woodwind (W.b.), Trumpet (Tr.), Percussion (Pt.), Violin (Vl.), Viola (Vla.), Cello (Cllk), and Double Bass (Kb.).

Measures 245-248 are marked at the top of the score. The notation includes various notes, rests, and dynamic markings such as *ff*, *p*, and *mp*. A large watermark "NB noter" is visible across the middle of the page, with the text "This music is copyright protected" written diagonally across it.

Handwritten musical score for a symphony orchestra, covering measures 249 to 252. The score is divided into two systems.

System 1 (Measures 249-252):

- Horn (H.):** Measures 249-252. Includes dynamics *ppp* and *f*. A circled number **5** is written above measure 252.
- Oboe:** Measures 249-252. Includes dynamic *fff*.
- Bassoon (Bsk.):** Measures 249-252. Includes dynamic *f*.
- Trumpet (Trp.):** Measures 249-252.
- Double Bass (Pss.):** Measures 249-252.
- Woodwinds (Wb., T.T., Fl.):** Measures 249-252.

System 2 (Measures 249-252):

- Violin (Vl.):** Measures 249-252. Includes dynamic *mf*.
- Viola (Vla.):** Measures 249-252.
- Cello (Cb.):** Measures 249-252.
- Double Bass (Kb.):** Measures 249-252.

A watermark for "NB noter" is visible across the middle of the score, with the text "The music is copyright protected" written diagonally below it.

G1.

Handwritten musical score for measures 253-256. Instruments include Flute (Fl.), Oboe (Oboe), Bassoon (Bs. Kl.), Trumpet (Trp.), Percussion (Perc.), Woodwinds (Wbl.), Trombone (T.T.), and Percussion (Ptc.).

Measure 253: Flute, Oboe, Bassoon, and Percussion have rests. Trumpet has a whole note G4. Woodwinds have a whole note chord (F4, C5).

Measure 254: Flute, Oboe, Bassoon, and Percussion have rests. Trumpet has a half note G4 (p) and a half note A4. Woodwinds have a whole note chord (F4, C5).

Measure 255: Flute, Oboe, Bassoon, and Percussion have rests. Trumpet has a whole note G4. Woodwinds have a whole note chord (F4, C5).

Measure 256: Flute, Oboe, Bassoon, and Percussion have rests. Trumpet has a whole note G4. Woodwinds have a whole note chord (F4, C5).

Handwritten musical score for measures 253-256. Instruments include Violin (Vl.), Viola (Vla.), Cello (Cello), and Double Bass (Kb.).

Measure 253: Violin, Viola, Cello, and Double Bass have whole notes (F4, C5).

Measure 254: Violin, Viola, Cello, and Double Bass have whole notes (F4, C5).

Measure 255: Violin, Viola, Cello, and Double Bass have whole notes (F4, C5).

Measure 256: Violin, Viola, Cello, and Double Bass have whole notes (F4, C5) with a *pp* dynamic marking.

62.

257. 258 259. 260.

Fl. *mp*

Oboe *mf*

Ps. *f*

Trp. *ppp*

W. b. *p*

T. I.

P. I.

VI. *p*

Vla.

Cl. b.

Kb. *pizz*

NB
noter
this music is copyright protected

Handwritten musical score for measures 261-264. The score is arranged in two systems of staves. The first system includes parts for Flute (Fl.), Oboe (Oboe), Bassoon (Fagott), Trumpet (Trompete), Trombone (Trombone), and Percussion (Perc.). The second system includes parts for Violin (Viol.), Viola (Viola), Cello (Cello), and Double Bass (Kontrabaß). Measure numbers 261, 262, 263, and 264 are written above the staves. The notation includes various notes, rests, and dynamic markings such as *pp* and *p*. A large watermark 'NB noter' is visible across the center of the page, with the text 'This music is copyright protected' written diagonally across it.

FIVE

64. >

Handwritten musical score for woodwinds and strings. The score is divided into four measures: 265, 266, 267, and 268.

- Flute (Fl):** Measure 265 has a dynamic marking of *f*. Measure 267 has a dynamic marking of *mp* and includes fingering numbers 5 and 5.
- Oboe (Ob):** Measure 267 has a dynamic marking of *mp* and includes fingering numbers 5 and 5.
- Clarinet (Cl):** Measure 265 has a dynamic marking of *p*. Measure 267 has a dynamic marking of *mp*.
- Trumpet (Trp):** Measure 267 has a dynamic marking of *p*.
- Trumpet II (Trp II):** Measure 267 has a dynamic marking of *mp*.
- Woodwind I (W.I.):** Measure 265 has a dynamic marking of *mp*. Measure 267 has a dynamic marking of *pp*.
- Woodwind II (W.II):** Measure 265 has a dynamic marking of *pp*. Measure 267 has a dynamic marking of *pp*.
- Woodwind III (W.III):** Measure 265 has a dynamic marking of *pp*. Measure 267 has a dynamic marking of *pp*.
- Woodwind IV (W.IV):** Measure 265 has a dynamic marking of *pp*. Measure 267 has a dynamic marking of *pp*.

Handwritten musical score for strings. The score is divided into four measures: 265, 266, 267, and 268.

- Violin I (VI):** Measure 265 has a dynamic marking of *ppp*. Measure 266 has a dynamic marking of *pp*. Measure 267 has a dynamic marking of *mp*. Measure 268 has a dynamic marking of *ppp*.
- Violin II (Vla):** Measure 265 has a dynamic marking of *ppp*. Measure 266 has a dynamic marking of *pp*. Measure 267 has a dynamic marking of *mp*. Measure 268 has a dynamic marking of *ppp*.
- Viola (Vla):** Measure 265 has a dynamic marking of *ppp*. Measure 266 has a dynamic marking of *pp*. Measure 267 has a dynamic marking of *mp*. Measure 268 has a dynamic marking of *ppp*.
- Cello (Vcl):** Measure 265 has a dynamic marking of *ppp*. Measure 266 has a dynamic marking of *pp*. Measure 267 has a dynamic marking of *mp*. Measure 268 has a dynamic marking of *ppp*.
- Double Bass (Vclb):** Measure 265 has a dynamic marking of *ppp*. Measure 266 has a dynamic marking of *pp*. Measure 267 has a dynamic marking of *mp*. Measure 268 has a dynamic marking of *ppp*.

Dunata: ca. 14, 25 m



Handwritten notes on the right margin: 1972, 1982, 1985, 1987, 1988, 1989, 1990, 1991, 1992, 1993, 1994, 1995, 1996, 1997, 1998, 1999, 2000, 2001, 2002, 2003, 2004, 2005, 2006, 2007, 2008, 2009, 2010, 2011, 2012, 2013, 2014, 2015, 2016, 2017, 2018, 2019, 2020, 2021, 2022, 2023, 2024, 2025