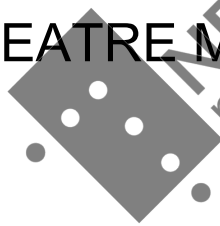


LARS SKOGLUND

EPP

THEATRE MUSIC FOR SINFONIETTA



MB
notes

This music is copyright protected

Lars Skoglund: *Epp* (2022)

Theatre music for sinfonietta and electronics

Score:

Alto Flute/Bassoon

Oboe

Bb Clarinet/Bass Clarinet

Horn in F

Trumpet in C

Trombone

Percussion 1: Vibraphone, Woodblock, Cymbals, Congas

Percussion 2: Tam-Tam, Woodblock, Drum Kit: Bass Drum, Snare Drum, Floor Tom, Ride Cymbal

Piano/Toy Piano*/Electric Piano with Auto wah pedal* (such as BOSS AW-3)

Violin

Viola

Double Bass

*Provided by the composer

Duration of the play: 1h 10m



Supported by Arts Council Norway

Commissioned by director and visual designer Tormod Lindgren and Theater Corpus for the dramatization of Axel Jensen's novel *Epp* (1965) by Aina Villanger, for figure theatre with three performers.

To be premiered at Ultima Festival in Oslo, September 2022 by Oslo Sinfonietta, conducted by Magnus Loddgard, and the performers Geir Robsrud, Thomas Hildebrandt and Dominika Minacz-Sira.

-- EPP --

1 Overture. Epp-universet, nevø og nabo

Lars Skoglund 2022

TRANSPPOSED
SCORE

A ♩ = 70

Oboe

Bass Clarinet in B \flat

Bassoon

Horn in F

Trumpet in C

Trombone

Percussion 1

Vibraphone

Percussion 2

Piano

Synthesizer soundtracks

Violin

Viola

Double Bass

ff

mf

ff

mf

ff

pedal tones

mf

TAM-TAM

f

mf

Sound file:
Helicopter-like sound
20" or more

gliss.

gliss.

(even 32-notes)

mp

move bow ad lib,
gradually richer
in overtones

The score is a transposed score for a full orchestra and synthesizer. It is in 4/4 time with a tempo of 70 beats per minute. The key signature is one flat (B-flat major or D minor). The score is divided into two systems. The first system includes Oboe, Bass Clarinet in B-flat, Bassoon, Horn in F, Trumpet in C, Trombone, Percussion 1, Vibraphone, Percussion 2 (with TAM-TAM), Piano, and Synthesizer soundtracks. The second system includes Violin, Viola, and Double Bass. The score features various dynamic markings (ff, mf, mp, f) and performance instructions such as 'pedal tones', 'gliss.', and 'move bow ad lib, gradually richer in overtones'. A large watermark 'NB noter' is visible across the middle of the score.

8

Ob.

B. Cl.

Bsn.

Hn.

C Tpt.

Tbn.

Perc. 1

Perc. 2

Pno.

Tracks

Vln.

Vla.

Db.

mf *ff* *f* *pp* *mf* *p*

mp *f* *mp* *f* *mf*

sim., even 32-notes

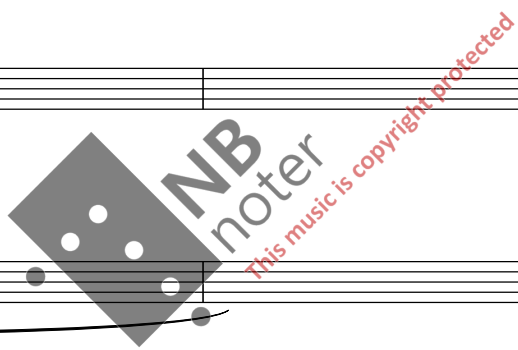
faster, ad lib

sim., even 32-notes

6 6 5

sul pont. faster, speed ad lib

overtone-gliss. blurry



B

11

Ob.

BASS CLARINET
overblow

Bsn.

Hn.

C Tpt.

Tbn.
pedal tones

Perc. 1
WOODBLOCK
Rubber mallets
sim., even 32-notes

Perc. 2
WOODBLOCK
Rubber mallets
sim.

Pno.

Tracks

B

Vln.

Vla.

Db.

flautando

fff

p

mp

p

mf

Ob. *p* *mf* *p*

B. Cl.

Bsn.

Hn.

C Tpt. muted *ppp* *p* *ppp*

Tbn. *mf*

Perc. 1 *mp* *mf*

Perc. 2 *f* *p* TAM-TAM *mf*

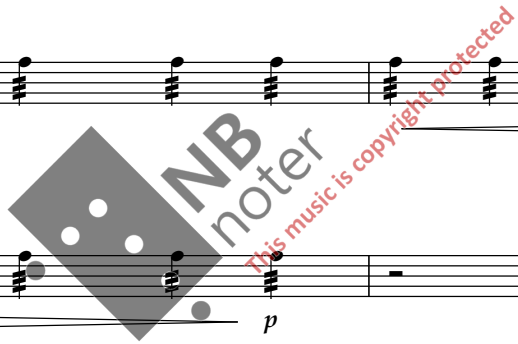
Pno.

Tracks

Vln. *ff* sul pont. *gliss.* *p* ord. *mp*

Vla. even blurry *f* even III *ff* vibr.

Db. 6 *mp* *p* *mp*



C

18

Ob. *pp* *mp*

B. Cl.

Bsn. *mp*

Hn. *mp*

C Tpt. *ppp*

Tbn.

Perc. 1 *ff*

Perc. 2

Pno.

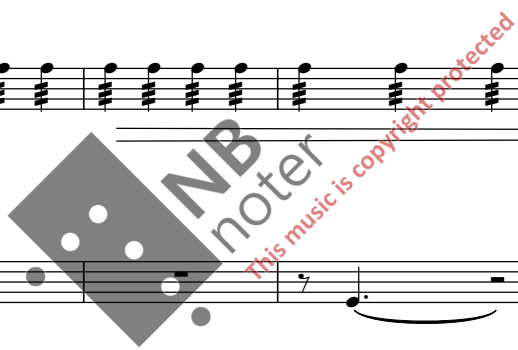
Tracks

C

Vln. *mf* *mp* *mf* *p*

Vla. crazy vibrato cont., sul pont. sul pont.

Db. *ppp* *mf*



Ob. *pp*

B. Cl.

Bsn.

Hn.

C Tpt. *mp*

Tbn. *mp*

Perc. 1

Perc. 2

Pno.

Tracks

Vln. *mf* *pp*

Vla. *mp* *fff* *f* *mf*

Db. *f* *mf* *mp* *mf* *gliss.*

III

ultra high, very fast sul III

towards

toneless scrape

faster

ultra high

ord., even

wild

even

gliss.

This music is copyright protected

D SLOWER ♩ = 62 Epp sees his nephew and neighbour

Ob.

B. Cl. flz. p mp pp

Bsn. pp p

Hn. mp

C Tpt.

Tbn. p

Perc. 1

Perc. 2 pp

Pno. pp

Tracks

Vln. SLOWER ♩ = 62

Vla. ppp

Db. p pp

Ob.

B. Cl.

Bsn.

Hn.

C Tpt.

Tbn.

Perc. 1

Perc. 2

Pno.

Tracks

Vln.

Vla.

Db.

<mf> p pp mf p

mp

mf

5 5 3 3 3 3 5 5 5 5

p ppp

detached p

detached p mp

mp

40

Ob.

B. Cl.

Bsn.

Hn.

C Tpt.

Tbn.

Perc. 1

Perc. 2

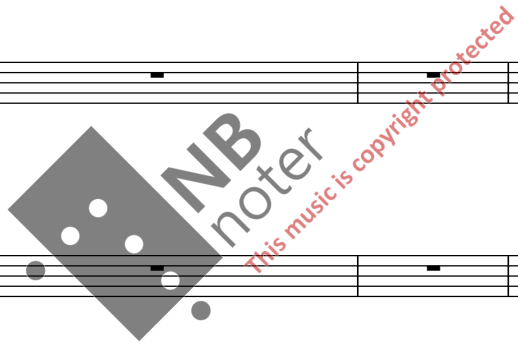
Pno.

Tracks

Vln.

Vla.

Db.



E

May be repeated many times

45

Ob.

B. Cl.

Bsn.

Hn.

C Tpt.

Tbn.

Perc. 1

Perc. 2

Pno.

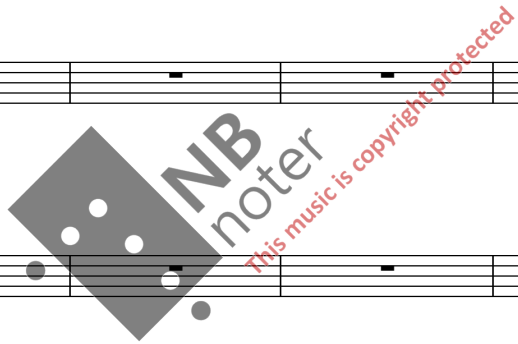
Tracks

E

Vln.

Vla.

Db.



2 Epp koker egg, ser nyheter, mater Ili, skriver rapport. Tapetet

Turning the scenography around,
after the line "Jaha, ja."

53 **F** ♩ = 64

Ob. *pp* *mp*⁶ *pp*

B. Cl.

Bsn. *mp*
Multiphonic

Hn. *mp* *mp*

C Tpt. (still muted) *ppp* *mp*

Tbn. *mf* *mp*

Perc. 1 *mf* *ff*

Perc. 2 TAM-TAM *mf* *mp*

Pno.

Tracks Sound file: Helikopter

Vln. **F** ♩ = 64 ord. *mp* *mf* *mp* *mf* *p* III

Vla. *mf* *f* crazy vibrato cont., sul pont. sul pont. towards

Db. *mf* *mf* *f* wild

On cue, feeding plant

♩ = 74

Harmon mute with stem

rubato

flzg.

67 **G** **H**

Tbn. *mp* *mf* *p* *ff* *p sub.* *sfz p*

Track: Eggkoker
Cue: puts on lid

Tracks



72 contrasting loud/soft

tone turning into air sound

(repeat if necessary)

I remove mute

Tbn. *f* *p* *pp* *fff* *pp* *p* *mf* *f* *mf*

Track: Krigsrobot

Tracks



On cue: "Gambolsk militærmusikk"

♩ = 68

as if flying over, surrealistically appearing-disappearing

77 **J**

Ob. *f* *fff*

B. Cl. rough *ff*

Bsn. rough *ff*

Hn. brassy *ff*

C Tpt. brassy *ff*

Tbn. brassy (not muted) *ff*

Perc. 1 CYMBALS *ff*

Perc. 2 SNARE DRUM BASS DRUM (pedal) *ff*

Tracks

14

80

sim.

f *fff*

to Bb Clarinet

to Alto Flute

Hn.

C Tpt.

Tbn.

Perc. 1

to Vibraphone

Perc. 2

Robot solo, behind monologue

Tracks

83

♩ = 64

On cue: Epp: "Tenk"

WOODBLOCK Rubber mallet

mp

TOY PIANO

mp

Vln.

Vla.

mp

Pizz.

mf crush "...en knirkende olding"

noise with audible pitch

col legno battuto

col legno battuto jeté

91

Perc. 2

Pno.

Vln.

Vla.

Arco sul pont. *gliss.*

Pizz.

c.l.b.j.

sim.

Pizz.

mute string with l.h.

Pizz.

Arco crush

Pizz. mute

Arco crush

Arco sul pont.

94

Perc. 2 *mf*

Pno. *mp*

Vln. Pizz. *p* *mp*

Vla. Crush *p* col legno battuto



Jump to here (keep pulse) on the line:
Epp: "Det er så greit med det.
Årene går."

99

A. Fl. *ppp*

Ob. *ppp*

Cl. Bb CLARINET *p* *ppp* *mp*

Hn. *p* muted, strong slow vibrato

C Tpt. *p* *ppp*

Tbn. *p*

Vib.

Perc. 2 *p*

Pno.

Vln. Pizz. *mp* Col legno battuto jeté *p* Pizz. *p* Col legno battuto jeté *p* sim.

Vla. Pizz. *mp* Arco crush *pp* Pizz. *pp* Pizz. *ppp*

Db.

with vibrato

pp mp pp

with vibrato

pp p > pp pp p pp

with vibrato

ppp ppp mp p mp

remove mute

with vibrato

pp mp ppp p mf

with vibrato

p mp pp pp p ppp

VIBRAPHONE

Arco

mp

Perc. 2

Pno.

Tracks

Arco sul pont.

Pizz.

Col legno battuto jeté

Pizz.

p mp p mp mp

p

ppp p pp

110

A. Fl.

Empty musical staff for Alto Flute.

Ob.

Musical staff for Oboe with dynamics *pp*, *mp*, and *p*.

Cl.

Musical staff for Clarinet with dynamics *mf*, *p*, *ppp*, *mf*, and *p*. Includes the instruction "to Bass Clarinet".

Hn.

Musical staff for Horn with dynamics *mf*, *p*, and *mp*. Includes the instruction "lyrical, with vibrato" and "sub.".

C Tpt.

Musical staff for Cornet with dynamics *ppp*, *mp*, *pp*, *ppp*, and *pp*.

Tbn.

Musical staff for Trombone with dynamics *ppp*, *mp*, *p*, *mp*, and *ppp*.

Vib.

Musical staff for Vibraphone with dynamic *mf*.

Perc. 2

Musical staff for Percussion 2 with dynamic *pp*.

Pno.

Musical staff for Piano.

Tracks

Empty musical staff for Tracks.

Vln.

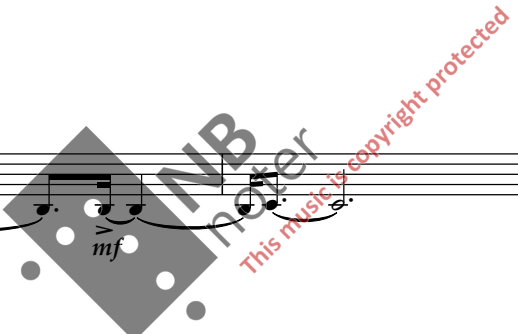
Musical staff for Violin with instruction "Col legno battuto jeté".

Vla.

Musical staff for Viola.

Db.

Musical staff for Double Bass with dynamics *mf* and *p*.



Stop ensemble when Epp says:
"Jeg sitter bare her ved bordet og lytter."

18

115 **O**

P

On cue:
"Ofte når jeg sitter her..."

Perc. 2

Pno.

Tracks

Vln.

Vla.

Db.

Arco sul pont. *gliss.*

Pizz.

c.l.b.j.

sim.

Pizz.

Pizz.

Arco
Crush

Pizz.
Mute

Arco
Crush

Arco
Sul pont.



Q

On cue:
Music is stopped
after "...judasøyet"

Perc. 2

120

Pno.

Tracks

Vln.

Vla.

Db.

Pizz.

mp

Col legno
battuto jeté

p

Pizz.

ppp

crush

ppp

Q

to Grand Piano



R

$\text{♩} = 62$

Bass clarinet on
Lem's entrance

127 BASS CLARINET

B. Cl.

pp



5

3



to Bb
Clar.

3 Lem på besøk. Ideen til Lem

♩ = 62

132 **S** **T** **U** On cue: "Dai og Arf og Epp og Lem."

A. Fl. *pp* *mp* *pp*

Ob. Long dialogue in silence *pp* *p* *pp* *pp* *p* *pp* *pp*

Cl. Bb CLARINET *ppp* *mp* *p* *mp* *mf*

Hn. *p* *mf*

C Tpt. *pp* *mp* *ppp* *p* *mf* *ppp*

Tbn. *p* *mp* *pp* *pp* *p* *ppp*

Vib. Arco *mp*

Perc. 2

Pno.

Tracks Sound file: Lasersag Start: "Hør nå her, Epp."

Vln. **S** **T** **U** ♩ = 62

Vla.

Db.

139

A. Fl. *p* *mf*

Ob. *mp* *p*

Cl. *p* *ppp*
to Bass Clarinet

Hn. *sub.* *p* *mp* *pp* *pp* *mp* *p* *mp* *p*
lyrical, with vibrato

C Tpt. *mp* *pp* *ppp*

Tbn. *ppp* *mp* *p* *pp* *mf*

Vib.

Perc. 2

Pno.

Tracks

Vln. *Arco* *pp* *mp* *p* *mp* *p*

Vla. *Arco* *p* *mf*

Db. *Arco* *pp*

to Bassoon

A. Fl. *pp mp pp*

Ob. *pp p pp pp mp p*

B. Cl. *mp mf*

Hn. *p mf p* lyrical, with vibrato sub.

C Tpt. *ppp p mf ppp*

Tbn. *pp p ppp ppp mp*

Vib. Soft mallets *p*

Perc. 2

Pno. GRAND PIANO *p*

Tracks

Vln. *pppp*

Vla. *pppp*

Db.

158

Ob.

B. Cl. *p* *ppp*

Bsn.

Hn. *mp* *pp*

C Tpt. *mp* *pp* *ppp*

Tbn. *p*

Vib. *ppp* with pedal, blurry *p* sim. *ppp*

Perc. 2

Pno. *ppp* with pedal, blurry *p*

Tracks

Vln. blurry *pp* *ppp* *pp*

Vla. blurry *pp* *pppp*

Db.

Ob. *ppp* 3 3

B. Cl. *pp* 3 3 3 3

Bsn.

Hn.

C Tpt.

Tbn.

Vib. *p* *ppp* 3

Perc. 2

Pno. *sim.* *ppp* *p* *ppp*

Tracks

Vln. *pppp* *pp* 3

Vla. *pp* 5 *pppp*

Db.

162

Ob. *p* *pp*

B. Cl. *mp* *pp* *ppp* *mp*

Bsn.

Hn.

C Tpt. *p* *ppp*

Tbn.

Vib. *p* *ppp*

Perc. 2

Pno. *p* *mp* *p*

Tracks

Vln. *pppp* *pp* *ppp*

Vla. *pp* *ppp*

Db. *p*

W

Ob. *ppp* *mp* *pp* *mp* *p*

B. Cl. *ppp* *p* *ppp*

Bsn. *ppp* *p*

Hn. *ppp*

C Tpt. *sub.* *p*

Tbn.

Vib.

Perc. 2

Pno.

Tracks

Vln. *p* *pppp* flautando

Vla. *p* *ppp*

Db. *pp* *mp* *pp* *p*

171

Ob. *ppp* *p* *ppp*

B. Cl. *p* *mf* *mp*

Bsn. *ppp* *mp* *pp*

Hn. *p* *pppp* *pp*

C Tpt. *mf* *p*

Tbn.

Vib.

Perc. 2

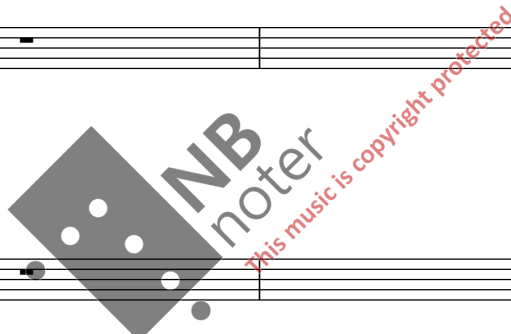
Pno.

Tracks

Vln. *pp* *mp* *p* *mp* *ppp*

Vla. *mp* *pp* *p* *mf* towards sul pont., gradually noisy

Db. *pp* *pp*



Stop abruptly on cue,
may be in the middle
of a passage

X Y

Ob.

B. Cl.

Bsn.

The playing ends abruptly
when Epp says:
"Om? Bevares, Lem!"
The ensemble is cut off,
soundtrack continues.
Before this point, passages
repeat if necessary.

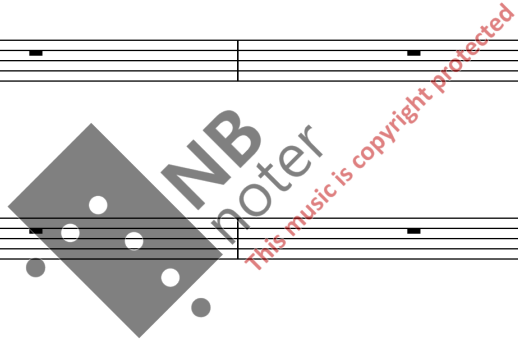
Hn.

C Tpt.

Tbn.

Vib.

Perc. 2



Pno.

Tracks

Lasersag cont.

Cue to start sound:
Lem: "Eller hva med bankesignaler?"

Sound file:
Bankesignaler

Low repeated tone,
speeds up -- slows down -- stops.

X Y

Vln.

Vla.

Db.

4 Epp alene i hybelen

Z
♩ = 64
Voice on tape
Epp monologue

AA

Tracks

Vln. **Z**
♩ = 64
con sord.
ppp

Vla. **Z**
ppp
con sord.

Db. **Z**
ppp

Tracks

Vln. pp

Vla. pp

Db. pp

BB
205

Ob. pp

B. Cl. BASS CLARINET pp

Bsn. pp

Hn. pp

C Tpt. pp

Tbn. pp

mp

pp

p

pp

Tracks

BB

Vln. **BB**

Vla. **BB**

Db. **BB**

Ob.
B. Cl.
Bsn.

Hn.
C Tpt.
Tbn.

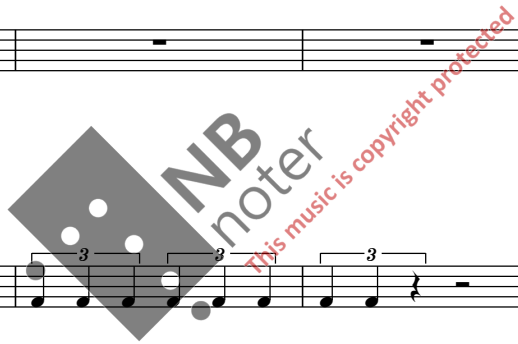
Perc. 1

Perc. 2
FLOOR TOM
Rubber or soft mallet

Pno.

Tracks

Vln.
Vla.
Db.



5 Epp går i korridorene

On cue
Oboe solo

223 **DD** **EE** ♩ = 60 with some vibrato

Ob. *mf* *mp* *p*

Tracks

Sound file:
Korridor
Heard constantly

233

Ob. *p* *pp* *p* *pp*

Tracks

Sound file:
Inspektør

6 Epp ser Lul som går berserk

FF ♩ = 64

Sound file:
Korridor (cont.)

243

Tracks

Sound file:
Lul, on entrance

FF ♩ = 64

con sord.

Vln. *pp* *ff* *pp* *ff* *pp* *poco sul pont.* *pp* *ff* *pp*

Vla. *pp* *ff* *pp* *ff* *pp* *poco sul pont.* *pp* *ff* *pp*

Db. *pp* *ff* *pp* *ff* *pp* *poco sul pont.* *pp* *ff* *pp*

252

Tracks

Vln. *ff* *pp* *pp* *ff* *pp*

Vla. *pp* *ff* *pp* *pp* *ff* *pp*

Db. *pp* *ff* *pp* *pp* *ff* *pp*

On cue
Oboe solo

GG ♩ = 60

with some vibrato

Stop after:
"Det er da noe
det også"

261

Ob. *pp* *mf* *mp* *p* *p* *pp* *p* *pp*

Tracks

Korridor fades out

7 Birr dør og Lem på rytmepalass

HH Turn scenography Flying inspector

276 ♩ = 64

II

Ob. *pp* *mp* *pp*

B. Cl.

Bsn. *mp*

Multiphonic

Hn. *mp* *mp*

C Tpt. *ppp* *mp*

Tbn. *mf* *mp*

Perc. 1 WOODBLOCK *mf* *ff*

Perc. 2 TAM-TAM *mf*

Pno.

Tracks

HH ♩ = 64 ord.

II III

Vln. *mp* *mf* *mp* *mf* *p*

Vla. *f* ord. crazy vibrato cont., sul pont. sul pont. towards

Db. *mf* *p* *mf* *f* wild

Ob.

B. Cl. *BASS CLARINET*
legato, rubato
pp

Bsn.
legato, rubato
pp

Hn.

C Tpt.
pp

Tbn.
mp

Perc. 1

Perc. 2

Pno.

Tracks

Vln.
ultra high, very fast
mf

Vla.
toneless scrape
mp
faster
fff
ultra high
f
ord. even
mf
ppp

Db.
even
mf
mp
gliss.
p

Ob.

B. Cl.

Bsn.

GRAND PIANO

Pno.

legato, rubato

pp

Tracks

Db.

legato, rubato

pp



Repeat until cue to continue

Ob.

B. Cl.

Bsn.

to Bb Clar.

to Alto Flute

Pno.

to El. Piano

Tracks

Db.

Conductor cues ensemble activities in and out, giving numbers with fingers. Rhythm track continues uninterrupted.

KK 296 ♩ = 96

CUE 1

Perc. 1 CONGAS *mp*

Pno. EL. PIANO with Auto wah

Tracks

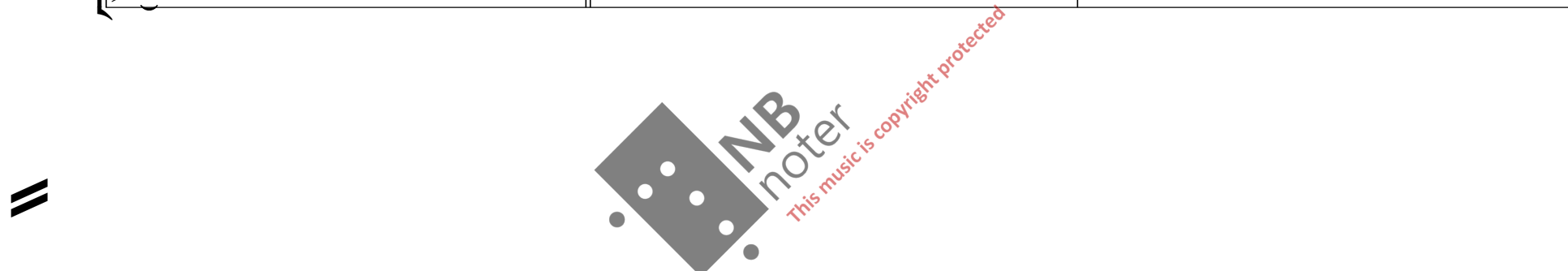
Sound file: Rytmepalass Constant beat/motive

Vln. ♩ = 96

Vla.

Db.

(We may also consider to cue different players with different cues at the same time.)



CUE 2

299

Tracks

Db. Pizz. IV *mf* Pizz. IV *mf*

CUE 3

303 motor on

Vib. *p*

Perc. 2 EGG/SHAKER *mf*

Tracks

307 [CUE 4]

air sound, with strings

[CUE 5]

A. Fl. *f* *mp* *f*

Ob. *mp* *f*

Cl. *mp* *f*

Hn. *mf* *mp* *f*

C Tpt. *mf* *mp* *f*

Tbn. *mf* *f*

Perc. 1

Vib.

Perc. 2

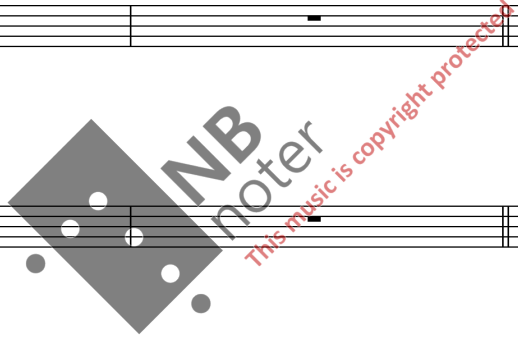
Pno.

Tracks

Vln. *sul pont.* *f*

Vla. *sul pont.* *f*

Db.



LL On cue, epilogue
Lem on dance floor

to Bassoon

312 ♩ = 62

A. Fl. *pp* *mp* *pp*

Ob. *pp* *p* *pp* *pp* *p* *pp*

Cl. *ppp* *mp* *p* *mp*

Hn. *p*

C Tpt. *pp* *mp* *ppp* *p* *mf*

Tbn. *p* *mp* *pp* *pp* *p* *ppp*

Vib. Arco *mp*

Perc. 2

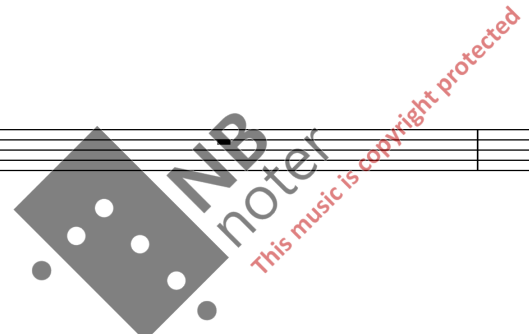
Pno.

Tracks
Dance music fades out (in its own tempo)
Sound file:
Lasersag

Vln. LL ♩ = 62

Vla.

Db.



A. Fl.

Ob.

Cl.

Hn.

C Tpt.

Tbn.

Vib.

Perc. 2

Pno.

Tracks

Vln.

Vla.

Db.

to Bass Clarinet

lyrical, with vibrato

sub.

pp *mf* *mp* *p* *ppp* *mf* *p*

mf *p* *mp* *ppp*

ppp *mp* *pp* *ppp* *pp*

ppp *mp* *p* *mp* *ppp*

mf *mp*

NB
noter
This music is copyright protected

8 Oppgjøret mellom Epp og Lem

MM ♩ = 58

323 WOODBLOCK

Perc. 2 *mp*

TOY PIANO

Pno. *mp*

Tracks

MM ♩ = 58

Vln. *p* Pizz. *pp* Col legno battuto jeté *p* *pp* Pizz. *p* *pp* Col legno battuto jeté *p* *mp* *p*

Vla. *p* Crush *p*

Db.

||



330 NN

OO

Perc. 2 *ppp* *p* *pp*

Pno. *p*

Tracks

Vln. *mp* *pp* *mp* *p* OO

Vla.

Db.

PP

Perc. 2

Staff for Percussion 2, measures 338-344. Dynamics: *p* (measures 338-340), *ppp* (measures 341-344).

Pno.

Piano staff, measures 338-344.

Tracks

Tracks staff, measures 338-344.

Vln.

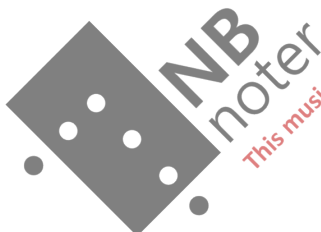
Violin staff, measures 338-344. Dynamics: *PP* (measures 338-340). Techniques: *Col legno battuto jeté* (measures 341-342), *Arco sul pont. gliss.* (measures 343-344).

Vla.

Viola staff, measures 338-344.

Db.

Double Bass staff, measures 338-344.



This music is copyright protected

Perc. 2

Staff for Percussion 2, measures 345-351.

Pno.

Piano staff, measures 345-351. Dynamic: *to Grand Piano* (measure 351).

Tracks

Tracks staff, measures 345-351.

Vln.

Violin staff, measures 345-351. Dynamics: *Arco sul pont. gliss.* (measures 345-346), *Pizz.* (measures 347-348), *c.l.b.j. sim.* (measures 349-350), *Pizz.* (measure 351). Technique: *mute string with l.h.* (measure 351).

Vla.

Viola staff, measures 345-351. Dynamics: *Pizz.* (measures 345-346), *Arco Crush* (measures 347-348), *Pizz. Crush Mute* (measures 349-350), *Arco Sul pont.* (measure 351), *Crush* (measure 351).

Db.

Double Bass staff, measures 345-351.

QQ

Harmon mute with stem
Rubato

351 flzg. $\text{♩} = 74$

flzg. flzg. flzg. 3

f p f p mf mp

Detailed description: Tbn. staff 351-354. Measure 351: $\text{♩} = 74$, flzg., f. Measure 352: p. Measure 353: flzg., f. Measure 354: flzg., p, mf, mp.

355 contrasting loud/soft

flzg. 3 6 jubilant gliss. Repeat if necessary

ppp f pp f pp p f

Detailed description: Tbn. staff 355-358. Measure 355: ppp, 3. Measure 356: f, pp, 6. Measure 357: f, pp, 3, 6. Measure 358: p, jubilant gliss., 5, Repeat if necessary.

RR

359 $\text{♩} = 68$

Ob. BASS CLARINET legato, rubato

B. Cl. legato, rubato

Bsn. pp

Hn.

C Tpt.

Tbn.

Vib.

Perc. 2 TAM-TAM p

Pno. GRAND PIANO pp legato, rubato pp

Tracks

Detailed description: Woodwind and Percussion staves 359-362. Ob. BASS CLARINET: legato, rubato. B. Cl.: pp, legato, rubato. Bsn.: pp, legato, rubato. Hn.: empty. C Tpt.: empty. Tbn.: empty. Vib.: empty. Perc. 2: TAM-TAM, p. Pno.: GRAND PIANO, pp, legato, rubato, pp. Tracks: empty.

RR

$\text{♩} = 68$

Vln.

Vla.

Db. pp pp pp 3

legato, rubato

Detailed description: String staves 359-362. Vln.: empty. Vla.: empty. Db.: pp, pp, pp, 3, legato, rubato.

Ob.

B. Cl.

Bsn.

Hn.

C Tpt.

Tbn.

Vib.

Perc. 2

Pno.

Tracks

Vln.

Vla.

Db.

366

Ob.

B. Cl. *p* *mf*

Bsn.

Hn.

C Tpt.

Tbn. *p*

Vib. *mp* *mp* *sim.*

Perc. 2

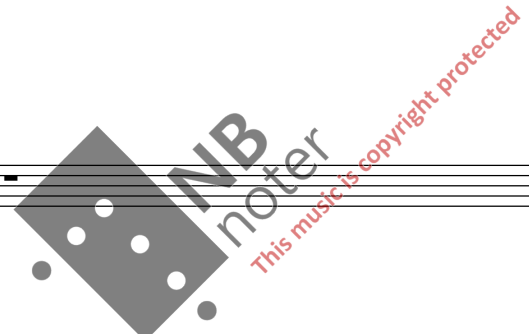
Pno. *p* *mf*

Tracks

Vln. *p* *mp* *f*

Vla. *p* *mf* *pp*

Db.



TT

growing in intensity

Ob.

B. Cl.

Bsn.

growing in intensity

Hn.

C Tpt.

Tbn.

growing in intensity

Vib.

FLOOR TOM
medium soft mallets

Perc. 2

p *mf* *mp* *f*

growing in intensity

Pno.

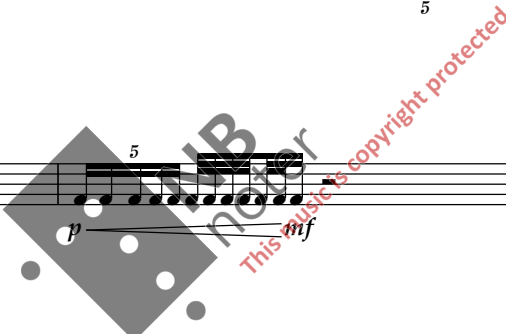
Tracks

growing in intensity

Vln.

Vla.

Db.



Loop slows down
at the last repeat

Ob. 375

B. Cl.

Bsn.

Hn.

C Tpt.

Tbn.

Vib.

Perc. 2

Pno.

Tracks

Vln.

Vla.

Db.

mp *f* *mf* *ff*

to El. Piano

NB noter
This music is copyright protected

9 Lem har flyttet

48

UU ♩ = 92 or slower
Swing 16-notes

377

Vib. *motor on*
mf

DRUM SET
Ride cymbal w/brushes
Brushes on snare
Bass drum (pedal)

*basic groove: light swinging
open for free fills etc.
Bass drum is used sparingly*

Perc. 2 *mp*

Pno. *mf*

EL. PIANO
with Auto wah effect

Db. *mf*

UU ♩ = 92 or slower
Swing 16-notes
Pizz.

4

4

4

383

VV

Perc. 2 8 12

Pno. 8

Db. 8

VV

391

WW

Perc. 2 4

Pno. 4

Db. 4

WW

399

XX

Perc. 2 8 12

Pno. 8

Db. 8

XX

YY

♩ = 68
Straight 16-notes

407

Ob.

B. Cl.

Bsn.

Hn.

C Tpt.

Tbn.

Perc. 1

Vib.

Perc. 2

Pno.

Tracks

Vln.

Vla.

Db.

with pedal, blurry

mp

pp < p

GRAND PIANO

with pedal, blurry

p

Pizz.

mp

Arco

pp < p

blurry

mf

Arco

pp < p

blurry

mf

Arco

p

10 Epp er syk

52

ZZ ♩ = 64
418 WOODBLOCK
Rubber mallet

Perc. 2

p

Pno.

Tracks

Voice on tape
Epp monologue

Vln. Pizz. *mp* Arco Crush *p* noise with audible pitch

Vla. *mp*

Db.

Col legno battuto jeté *p*

Pizz. *p*

Col legno battuto jeté *p*

427 AAA

Perc. 2

mf *p*

Pno. TOY PIANO

Tracks

Vln. AAA Arco sul pont. *pp* Col legno battuto jeté *p* Col legno single strokes Arco Sul pont. *gliss.* *p* Col legno battuto jeté *p*

Vla. Pizz. *m* Crush Pizz. Mute strings with l.h. no pitch

Db.



435 53

BBB

Perc. 2 *mp* *mf*

Pno.

Tracks

Vln. *Pizz.* *mp* *Arco* *Crush*

Vla. III

Db.

439

Perc. 2 *mp* *mf* *p*

Pno.

Tracks

Vln.

Vla. *Arco* *Crush* *Pizz.* *mp*

Db.



CCC
446
On cue:
"...ble nødt til å
koke et helt nytt egg."

A. Fl. *pp mp pp*

Ob. *pp p pp pp p pp pp mp p*

Cl. *ppp mp p mp mf p*

Hn. *p mf p* *sub. lyrical, with vibrato*

C Tpt. *pp mp ppp p mf ppp*

Tbn. *p mp pp pp p ppp ppp mp*

Vib. *VIBRAPHONE Arco mp*

Perc. 2

Pno.

Tracks

Vln. *CCC Pizz. mp Col legno battuto jeté p Pizz. Col legno battuto jeté p*

Vla. *Arco Crush p*

Db. *Arco pp mp*

452

A. Fl.

Ob.

Cl. to Bass Clarinet

Hn.

C Tpt.

Tbn.

Vib.

Perc. 2

Pno. to El. Piano

Tracks

Vln. sim. Arco sul pont. Col legno battuto jeté Col legno single strokes

Vla. Pizz. m

Db.

ppp *mf* *p*

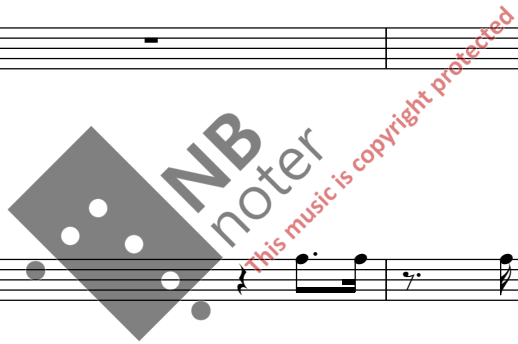
mp *pp* *ppp* *pp*

p *mp* *ppp*

mf

p

p *m*



456

A. Fl.

Ob.

B. Cl.

Hn.

C Tpt.

Tbn.

Vib.

Perc. 2

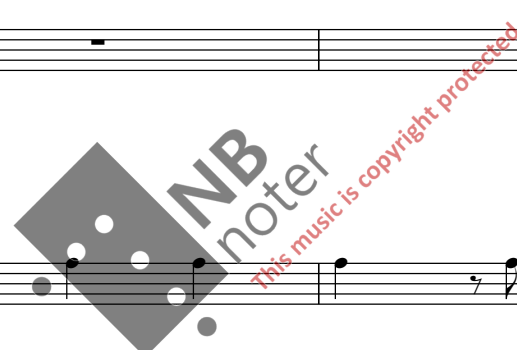
Pno.

Tracks

Vln.

Vla.

Db.



11 Brev fra Lem og Ili stikker

DDD

♩ = 92
Swing 16-notes

461

A. Fl.
Ob.
B. Cl.

Hn.
C Tpt.
Tbn.

Vib. *motor on*
mf

Perc. 2
mp
DRUM SET
Ride cymbal w/brushes
Brushes on snare
Bass drum (pedal)
basic groove: light swinging open for free fills etc. Bass drum is used sparingly

Pno.
EL. PIANO
with Auto wah effect
mf

Tracks

DDD

♩ = 92
Swing 16-notes

Vln.
Vla.
Db. *Pizz.*
mf

EEE

467

A. Fl.

Musical staves for A. Fl., Ob., and B. Cl. showing rests.

Hn.

Musical staff for Hn. showing rests.

C Tpt.

Musical staff for C Tpt. showing rests.

Tbn.

Musical staff for Tbn. showing rests.

Vib.

Musical staff for Vib. with notes and slurs.

Perc. 2

Musical staff for Perc. 2 with slash marks and measure numbers 8 and 12.

Pno.

Musical staves for Pno. with notes and slurs.

Tracks

Musical staff for Tracks showing rests.

EEE

warm

Vln.

Musical staff for Vln. with notes, slurs, and dynamics mp.

Vla.

Musical staff for Vla. with notes, slurs, and dynamics mp.

Db.

Musical staff for Db. with notes and slurs.



FFF

475

A. Fl. *p*

Ob.

B. Cl.

Hn. *p*

C Tpt. *p*

Tbn. *p*

Vib.

Perc. 2

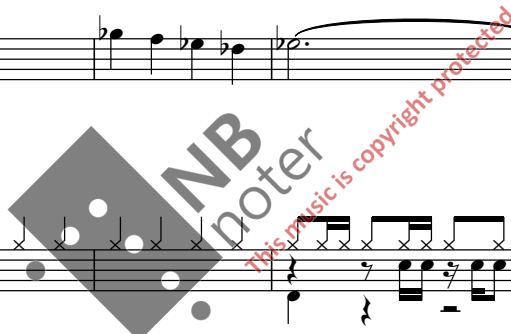
Pno.

Tracks

Vln. *Pizz.* *FFF*

Vla. *Pizz.*

Db.



GGG

A. Fl.

Musical staff for A. Fl. showing a melodic line with a slur and a fermata.

Ob.

Musical staff for Ob. showing a melodic line with a slur and a fermata, marked *mp*.

B. Cl.

Musical staff for B. Cl. showing a melodic line with a slur and a fermata, marked *mp*.

Hn.

Musical staff for Hn. showing a melodic line with a slur and a fermata.

C Tpt.

Musical staff for C Tpt. showing a melodic line with a slur and a fermata.

Tbn.

Musical staff for Tbn. showing a melodic line with a slur and a fermata.

Vib.

Musical staff for Vib. showing a melodic line with a slur and a fermata.

Perc. 2

Musical staff for Perc. 2 showing a rhythmic pattern with a watermark.

Pno.

Musical staff for Pno. showing a rhythmic pattern with a watermark.

Tracks

Musical staff for Tracks showing a rhythmic pattern.

GGG

Vln.

Musical staff for Vln. showing a melodic line with a slur and a fermata, marked *mp*.

Vla.

Musical staff for Vla. showing a melodic line with a slur and a fermata, marked *mp*.

Db.

Musical staff for Db. showing a rhythmic pattern with a watermark.

to Bassoon

491

A. Fl.

Ob.

B. Cl.

pp

Hn.

mp

C Tpt.

pp

Tbn.

pp

Vib.

to Cymbals

Perc. 2

16

Pno.

mp

to Grand Piano

Tracks

Track: Krigsrobot

Vln.

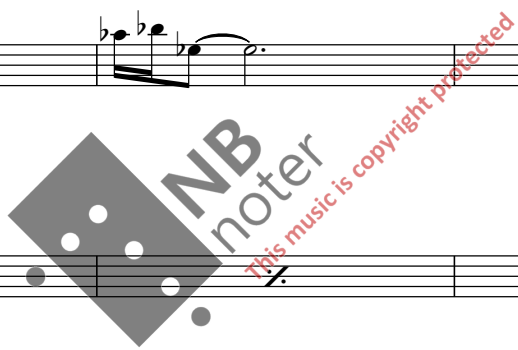
pp

Vla.

pp

Db.

mp



62 **HHH** ♩ = 68 Straight 16-notes

497

Ob. *f* *fff* *mp* as if flying over, surrealistically appearing-disappearing

B. Cl. rough *ff*

Bsn. rough *ff*

Hn. brassy *ff*

C Tpt. brassy *ff*

Tbn. brassy (not muted) *ff*

Perc. 1 CYMBALS *ff*

Perc. 2 SNARE DRUM BASS DRUM (pedal) *ff*

Pno. GRAND PIANO *mp* *f* *mp* as if flying over, surrealistically appearing-disappearing

Tracks

Vln. **HHH** ♩ = 68 Straight 16-notes

Vla.

Db.

Fade-out imitation

500

Ob. *f* *fff*

B. Cl.

Bsn.

Hn.

C Tpt.

Tbn. Harmon mute with stem

Perc. 1

Perc. 2

Pno. *ff* *mp*

Tracks

III ♩ = 60

504

Ob. *pp* *mf* *mp* *p* *p* *pp* *p* *pp*

Tracks

KKK ♩ = 74 [Very angry flower attacking]

519

Tbn. Harmon mute with stem *flzg.* *+* *flzg.* *flzg.* *+* *flzg.*

ff *f* *ff* *p sub.* *ff* *ff* *sfz p* *p sub.* *sfz*

523

Tbn. *p* *f* *p* *pp* *fff* *pp* *gliss.* *gliss.*

contrasting loud/soft

12 Ep(p)ilog

64

LLL

526 ♩ = 62

Ob.

B. Cl. flz. p

Bsn. p pp p mf

Hn. mp

C Tpt.

Tbn. p

Perc. 1

Perc. 2

Pno. pp

Tracks

Vln. ♩ = 62 LLL

Vla. p detached

Db. Arco pp

MMM

66

536

Ob.

B. Cl.

Bsn.

Hn.

C Tpt.

Tbn.

Perc. 1

Perc. 2

Pno.

Tracks

MMM

Vln.

Vla.

Db.

541

Ob.

B. Cl. *flz.* *p*

Bsn.

Hn. *p* *pp* *pp*

C Tpt.

Tbn. *p*

Perc. 1

Perc. 2

Pno. *p* *ppp*

Tracks

Vln. *p* *mp* *ppp*

Vla. *p* *mp* *ppp*

Db.

NNN

549

A. Fl. *p* *pp* *p* *mf*

Ob.

B. Cl. *p* *mf* *p* *pp* *p* *flz.* *5*

Hn. *mp*

C Tpt.

Tbn. *p*

Perc. 1

Perc. 2

Pno. *pp* *5* *5*

Tracks
Sound file:
Signaler fra kosmos (coming and going)

Vln. *NNN*

Vla. *Arco detached* *p*

Db. *pp*

555

A. Fl. *p* *pp* *mf* *p*

Ob.

B. Cl. *mf*

Hn. *mp*

C Tpt.

Tbn.

Perc. 1 *mf*

Perc. 2

Pno. *p* *ppp*

Tracks

Vln. *p* Arco detached

Vla. *mp*

Db.



A. Fl.

Ob.

B. Cl.

Hn.

C Tpt.

Tbn.

Perc. 1

Perc. 2

Pno.

Tracks

Vln.

Vla.

Db.

564

A. Fl.

Ob.

B. Cl. *flz.* *p*

Hn. *p* *pp* *pp*

C Tpt.

Tbn. *p*

Perc. 1

Perc. 2

Pno. *p* *ppp*

Tracks *signaler fra kosmos*

Vln. *p* *mp* *ppp*

Vla. *p* *mp* *ppp*

Db.