

Til: [K. i. Stevesson - H. Sparnaay - T. Lerstad]

Robert Rönnes:

» 1^{er}

Suite

pour

trio d'clarinettes

(1986-87)

clarinette en si \flat

clarinette basse en si \flat

clarinette contre basse en si \flat

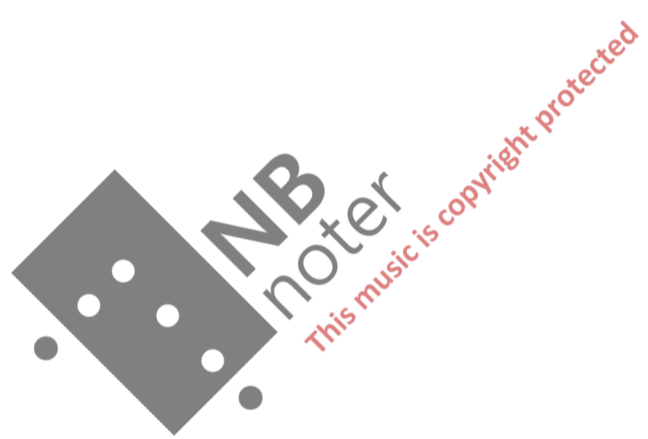
Mouvements:

1] Prelude.

2] Melancolia.

3.] Finale.
(Black-Box-Rag.)

Durée d'exécution ca:



"4^{er} Suite"

pour Trio d'clarinettes
1: Prélude

R. Roumè 86-87

$\text{♩} = 144-160$
Avec Raffinement e Vitalité

Handwritten musical score for three clarinets (CL. en sib, CL. basse en sib, CL. contrebasse en sib) and bassoon (Cb.). The score is divided into two systems, starting at measures 5 and 10. The music is in 3/8 time and features complex rhythmic patterns, including triplets and sixteenth notes. The key signature is B-flat major. The score includes dynamic markings such as *mf cresc.*, *cresc.*, and *Furieux!*. The tempo is marked *Rapide au plus vite*. The bassoon part is marked *La basse toujours*. The score is annotated with various performance instructions and fingering suggestions.

CL. en sib

CL. basse en sib

CL. contrebasse en sib

Cb.

La basse toujours

5

10

mf cresc.

cresc.

Furieux!

Rapide au plus vite

WH Nr. 2. F. 10

14

Cl. 3/8 ff (tojours)

Cl.b. 3/8 ff (tojours)

Cl.cb. 3/8 ff (tojours)

19

Cl. 3/4

Cl.b. 3/4

Cl.cb. 3/4

8b. 3/4

24

Cl. 3/4

Cl.b. 3/4

Cl.cb. 3/4

8b. 3/4

Respirer

! = 88

29

Cl. $\frac{2}{4}$ f ma Doux

Cl.b. p Doucement mf

Cl.cb. $8b.$ p Doucement mf

33

Cl. $\frac{2}{4}$ L $3:5/8$

Cl.b. $\frac{6}{8}$

Cl.cb. $8b.$ $\frac{6}{8}$

38

Cl. $\frac{6}{8}$ f - ff Bend-tone

Cl.b. $\frac{6}{8}$

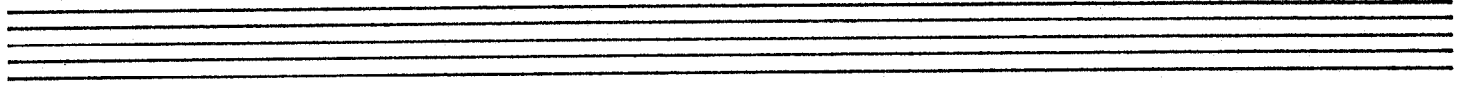
Cl.cb. $8b.$ $\frac{6}{8}$

Handwritten musical score for Clarinet in C (Cl.), Clarinet in Bb (Cl. b.), and Bassoon (Cb.). The score is divided into three systems, each starting with a circled measure number: 42, 45, and 48.

System 1 (Measures 42-44):
- **Cl.:** Treble clef, 2/4 time signature. Measure 42 starts with a circled 42. Dynamics: *dim.* (measures 42-43), *P avec Vibrato et Sentiment* (measure 44).
- **Cl. b.:** Bass clef, 7/8 time signature. Dynamics: *dim.* (measures 42-43), *pp* (measure 44).
- **Cb.:** Bass clef, 8b. (Bb) instrument. Dynamics: *dim. gliss.* (measures 42-43), *mf pp*, *pp*, *mf pp*, *mf pp*, *pp*, *mf pp* (measures 42-44).

System 2 (Measures 45-47):
- **Cl.:** Treble clef, 2/4 time signature. Measure 45 starts with a circled 45. Dynamics: *mf pp*, *pp*, *mf pp*, *mf pp*, *mf pp*, *mf pp* (measures 45-47).
- **Cl. b.:** Bass clef, 7/8 time signature. Dynamics: *mf pp*, *pp*, *mf pp*, *mf pp*, *mf pp*, *mf pp* (measures 45-47).
- **Cb.:** Bass clef, 8b. (Bb) instrument. Dynamics: *mf pp*, *pp*, *mf pp*, *mf pp*, *mf pp*, *mf pp* (measures 45-47).

System 3 (Measures 48-50):
- **Cl.:** Treble clef, 2/4 time signature. Measure 48 starts with a circled 48. Dynamics: *P! elegante!* (measures 48-50).
- **Cl. b.:** Bass clef, 7/8 time signature. Dynamics: *mf pp*, *pp*, *mf pp*, *mf pp*, *mf pp*, *mf pp* (measures 48-50).
- **Cb.:** Bass clef, 8b. (Bb) instrument. Dynamics: *mf pp*, *pp*, *mf pp*, *mf pp*, *mf pp*, *mf pp* (measures 48-50).
- **Footnote:** WH No. 2. F. 10.



51 = 88 Furiex

Handwritten musical score for measures 51-52. The score is for three parts: Clarinet in C (Cl.), Clarinet in Bb (Cl. b.), and Bassoon (L. b.).

- Cl.:** Treble clef, 4/4 time signature. Contains a melodic line with slurs and a fermata over a 12-measure phrase.
- Cl. b.:** Bass clef, 4/4 time signature. Contains a melodic line with slurs and a fermata over a 12-measure phrase.
- L. b.:** Bass clef, 4/4 time signature. Contains a bass line with slurs and a fermata over a 12-measure phrase.

Handwritten annotations include "5 4", "5 7", and "12" above and below the staves. A sharp sign (#) is present in the Cl. b. part.

52 Tres Moderé

Handwritten musical score for measures 53-58. The score is for three parts: Clarinet in C (Cl.), Clarinet in Bb (Cl. b.), and Bassoon (L. b.).

- Cl.:** Treble clef, 3/8 time signature. Features a melodic line with slurs and dynamic markings like *p*.
- Cl. b.:** Bass clef, 3/8 time signature. Features a melodic line with slurs and dynamic markings like *p*.
- L. b.:** Bass clef, 3/8 time signature. Features a bass line with slurs and dynamic markings like *p*.

Handwritten annotations include "3 8", "5 8", and "6 8" above and below the staves. A large watermark "MB noter" is visible across the center of the page.

59

Handwritten musical score for measures 59-64. The score is for three parts: Clarinet in C (Cl.), Clarinet in Bb (Cl. b.), and Bassoon (L. b.).

- Cl.:** Treble clef, 6/8 time signature. Features a melodic line with slurs and dynamic markings like *f* and *p*.
- Cl. b.:** Bass clef, 6/8 time signature. Features a melodic line with slurs and dynamic markings like *f* and *p*.
- L. b.:** Bass clef, 6/8 time signature. Features a bass line with slurs and dynamic markings like *f* and *p*.

Handwritten annotations include "6 8", "3 8", "4 8", and "4 8" above and below the staves.

65

Cl. 4/8 mf 3/8 mp 4/8 cresc. 3/8 ff dim. 4/8

Cl. b. 4/8 3/8 4/8 3/8 4/8

Cl. cb. 8b. mf mp cresc. ff dim.

69

Cl. 4/8 dim. 3/8 mf dim. 4/8 p 3/8 PP Solo 3/4 plus Lent ♩ = 88

Cl. b. 4/8 3/8 4/8 3/8 3/4

Cl. cb. 8b. dim. mf dim. p PP

Cédez

74

Cl. 3/4 mp 3/8 mf-mp 7/8 p cresc. 5/8

Cl. b. 3/4 mf 3/8 7/8 5/8

Cl. cb. 8b. mp mf p cresc.

77

Cl. L. *Sim.*

Cl. B.

Cl. Cb.

8b.

80

Cl. L. *Lent e acc.* *a moder. l. = 88*

Cl. B. *Lent e accel.*

Cl. Cb. *cresc.*

8b.

83

Cl. L. *Lent (P=120) e Doux* *Calma e Furiant penapau.*

Cl. B.

Cl. Cb.

8b.

87

Cl. 5/8 f mf mp f

Cl. b. 5/8 f (f) mp f

Cl. cb. 8b. f mf mp f

89

Cl. 3/8 cresc. f - Furieux

Cl. b. 3/8 cresc. f - Furieux

Cl. cb. 8b. cresc.

92

Cl. 4/8 f dim. p

Cl. b. 4/8 f dim. p

Cl. cb. 8b. Solo Non Rubato

96

C1. 4/8 (p) Trem.

C2. 4/8 (p) Trem.

C3. 8b. f

99

C1. 3/8 mf-mp

C2. 3/8 mf-mp

C3. 8b. mp cresc.

pp cresc. Trem.

103

C1. 3/8 cresc. Trem.

C2. 3/8 mp-p Tres Sec!

C3. 8b. cresc. p

pp!

107

Handwritten musical score for measures 107-110. The score is for three parts: Clarinet in C (cl.), Clarinet in B-flat (cl.b.), and Bassoon (cl.cb.). The key signature is one sharp (F#). The time signature is 3/8. Measure 107 starts with a piano (p) dynamic. Measure 108 features a triplet of eighth notes in the clarinet parts, marked piano-piano (pp). Measure 109 continues with a mezzo-forte (mf) dynamic. Measure 110 ends with a piano (p) dynamic. The bassoon part includes a sub-octave (8b.) marking.

111

Handwritten musical score for measures 111-114. The score is for three parts: Clarinet in C (cl.), Clarinet in B-flat (cl.b.), and Bassoon (cl.cb.). The key signature is one sharp (F#). The time signature is 3/8. Measure 111 features a dynamic marking of *dim.* (diminuendo). Measure 112 features a dynamic marking of *mf* (mezzo-forte). Measure 113 features a dynamic marking of *f* (forte) and a *f subito* marking. Measure 114 features a dynamic marking of *f*. The clarinet parts include a *Tr b* (trill) marking. The bassoon part includes a *f* marking.

115

Handwritten musical score for measures 115-118. The score is for three parts: Clarinet in C (cl.), Clarinet in B-flat (cl.b.), and Bassoon (cl.cb.). The key signature is one sharp (F#). The time signature is 7/16. Measure 115 features a dynamic marking of *pp* (pianissimo) and a *cedez* (cedere) marking. Measure 116 features a dynamic marking of *pp* and a *cedez* marking. Measure 117 features a dynamic marking of *pp* and a *chantant* marking. Measure 118 features a dynamic marking of *p* (piano). The clarinet parts include a *cedez* marking. The bassoon part includes a *dim.* (diminuendo) marking.

(119)

cl. (Clarinete) $\frac{3}{4}$ P

cl.b. (Clarinete Bass) $\frac{3}{4}$ P

cl.cb. (Clarinete Basson) $\frac{3}{4}$ mp

(quasi-fermata)

(122)

cl. (Clarinete) $\frac{6}{4}$

cl.b. (Clarinete Bass) $\frac{6}{4}$

cl.cb. (Clarinete Basson) $\frac{6}{4}$

8b.

court

$\text{♩} = 144-160$ Avec Raffinement et Vitalité.

(124)

cl. (Clarinete) $\frac{3}{4}$

cl.b. (Clarinete Bass) $\frac{3}{4}$

cl.cb. (Clarinete Basson) $\frac{3}{4}$

8b.

129

Handwritten musical score for measures 129-133. The score is for three parts: Clarinet in C (Cl.), Clarinet in Bb (Cl. b.), and Clarinet in Cb (Cl. cb.). The key signature is one flat (Bb) and the time signature is 2/4. The music features complex rhythmic patterns with eighth and sixteenth notes, triplets, and various accidentals. Measure 133 includes a fermata and a dynamic marking of *ff*.

134

Handwritten musical score for measures 134-137. The score is for three parts: Clarinet in C (Cl.), Clarinet in Bb (Cl. b.), and Clarinet in Cb (Cl. cb.). The key signature is one flat (Bb) and the time signature is 2/4. The music features complex rhythmic patterns with eighth and sixteenth notes, triplets, and various accidentals. Measure 137 includes a fermata and a dynamic marking of *ff*. A large watermark is visible across the score.

138

(x=slap-tongue)

Handwritten musical score for measures 138-139. The score is for three parts: Clarinet in C (Cl.), Clarinet in Bb (Cl. b.), and Clarinet in Cb (Cl. cb.). The key signature is one flat (Bb) and the time signature is 2/4. The music features complex rhythmic patterns with eighth and sixteenth notes, triplets, and various accidentals. Measure 139 includes a fermata and a dynamic marking of *ff*. A large watermark is visible across the score.

29/12.86

R.R.

II: Melancolia

$\text{♩} = 60$ Cantilene
($\text{♩} = 120$ max.)

Handwritten musical score for the first system, measures 1-3. The score is for three staves: Clarinet in C (Cl.), Clarinet in B-flat (Cl.b.), and Bassoon (Cb.).

- Measure 1:** Cl. has a whole rest. Cl.b. has a whole rest. Cb. has a whole note chord: $\text{F}\sharp_2, \text{C}\flat_3, \text{F}\sharp_3, \text{C}\flat_4$.
- Measure 2:** Cl. has a whole rest. Cl.b. has a whole rest. Cb. has a whole note chord: $\text{F}\sharp_2, \text{C}\flat_3, \text{F}\sharp_3, \text{C}\flat_4$.
- Measure 3:** Cl. has a whole note chord: $\text{F}\sharp_2, \text{C}\flat_3, \text{F}\sharp_3, \text{C}\flat_4$. Cl.b. has a whole note chord: $\text{F}\sharp_2, \text{C}\flat_3, \text{F}\sharp_3, \text{C}\flat_4$. Cb. has a whole note chord: $\text{F}\sharp_2, \text{C}\flat_3, \text{F}\sharp_3, \text{C}\flat_4$.

Tempo markings: *p* Doux - toujours.

Handwritten musical score for the second system, measures 4-6. The score is for three staves: Clarinet in C (Cl.), Clarinet in B-flat (Cl.b.), and Bassoon (Cb.).

- Measure 4:** Cl. has a whole note chord: $\text{F}\sharp_2, \text{C}\flat_3, \text{F}\sharp_3, \text{C}\flat_4$. Cl.b. has a whole note chord: $\text{F}\sharp_2, \text{C}\flat_3, \text{F}\sharp_3, \text{C}\flat_4$. Cb. has a whole note chord: $\text{F}\sharp_2, \text{C}\flat_3, \text{F}\sharp_3, \text{C}\flat_4$.
- Measure 5:** Cl. has a whole note chord: $\text{F}\sharp_2, \text{C}\flat_3, \text{F}\sharp_3, \text{C}\flat_4$. Cl.b. has a whole note chord: $\text{F}\sharp_2, \text{C}\flat_3, \text{F}\sharp_3, \text{C}\flat_4$. Cb. has a whole note chord: $\text{F}\sharp_2, \text{C}\flat_3, \text{F}\sharp_3, \text{C}\flat_4$.
- Measure 6:** Cl. has a whole note chord: $\text{F}\sharp_2, \text{C}\flat_3, \text{F}\sharp_3, \text{C}\flat_4$. Cl.b. has a whole note chord: $\text{F}\sharp_2, \text{C}\flat_3, \text{F}\sharp_3, \text{C}\flat_4$. Cb. has a whole note chord: $\text{F}\sharp_2, \text{C}\flat_3, \text{F}\sharp_3, \text{C}\flat_4$.

Tempo markings: *p* - Doux - toujours.

Handwritten musical score for the third system, measures 7-9. The score is for three staves: Clarinet in C (Cl.), Clarinet in B-flat (Cl.b.), and Bassoon (Cb.).

- Measure 7:** Cl. has a whole note chord: $\text{F}\sharp_2, \text{C}\flat_3, \text{F}\sharp_3, \text{C}\flat_4$. Cl.b. has a whole note chord: $\text{F}\sharp_2, \text{C}\flat_3, \text{F}\sharp_3, \text{C}\flat_4$. Cb. has a whole note chord: $\text{F}\sharp_2, \text{C}\flat_3, \text{F}\sharp_3, \text{C}\flat_4$.
- Measure 8:** Cl. has a whole note chord: $\text{F}\sharp_2, \text{C}\flat_3, \text{F}\sharp_3, \text{C}\flat_4$. Cl.b. has a whole note chord: $\text{F}\sharp_2, \text{C}\flat_3, \text{F}\sharp_3, \text{C}\flat_4$. Cb. has a whole note chord: $\text{F}\sharp_2, \text{C}\flat_3, \text{F}\sharp_3, \text{C}\flat_4$.
- Measure 9:** Cl. has a whole note chord: $\text{F}\sharp_2, \text{C}\flat_3, \text{F}\sharp_3, \text{C}\flat_4$. Cl.b. has a whole note chord: $\text{F}\sharp_2, \text{C}\flat_3, \text{F}\sharp_3, \text{C}\flat_4$. Cb. has a whole note chord: $\text{F}\sharp_2, \text{C}\flat_3, \text{F}\sharp_3, \text{C}\flat_4$.

8

Cl. 6/4 mf 5/4 6/4

Cl. b. 6/4 mf 5/4 6/4

Cl. cb. 8b. 6/4 mf 5/4 6/4

10

Cl. 6/4 f 5/4 dim. 6/4

Cl. b. 6/4 f 5/4 dim. 6/4

Cl. cb. 8b. f 5/4 dim. 6/4

12

Cl. 6/4 mf 5/4 mp 6/4

Cl. b. 6/4 mf 5/4 mp 6/4

Cl. cb. 8b. mf 5/4 mp 6/4

WH No. 2. F. 10.

Handwritten musical score for measures 14-15. The score is for three parts: CL1 (top), CL2 (middle), and CL3 (bottom). The key signature is one sharp (F#) and the time signature is 4/4. Measure 14 is circled with the number 14. The notation includes various notes, rests, and dynamic markings such as *p* and *pp*. There are also some handwritten annotations like "5" and "4" above the notes.

Handwritten musical score for measures 16-18. The score is for three parts: CL1 (top), CL2 (middle), and CL3 (bottom). The key signature is one sharp (F#) and the time signature is 4/4. Measure 16 is circled with the number 16. The notation includes various notes, rests, and dynamic markings such as *pp*, *ppp*, and *mp*. There are also some handwritten annotations like "5", "4", and "court". Above the first measure, there is a handwritten instruction: "Peu Largement". Above the second measure, there is a handwritten instruction: "court". Above the third measure, there is a handwritten instruction: "a mouvemente (ou un peu plus mouvt)".

Handwritten musical score for measures 19-20. The score is for three parts: CL1 (top), CL2 (middle), and CL3 (bottom). The key signature is one sharp (F#) and the time signature is 4/4. Measure 19 is circled with the number 19. The notation includes various notes, rests, and dynamic markings such as *mp*, *p*, and *mf*. There are also some handwritten annotations like "5" and "4".

25

Cl.
Cl. b.
Bb.

30

Cl.
Cl. b.
Bb.

mp
p
mf
p
mp
p

(strictement en tempo)

35

plus mouvemente (♩ = 76)

Cl.
Cl. b.
Bb.

pp
pp

Douxement e sensitif

5/4

38 *Tres Expressif e Gracieux*

5/4 p

6/4

5/4

cl.b. 5 (pp) *Delicieux e Doux.*

6/4

5/4

cl.cb. 8b. (pp) *Delicieux e Doux.*

40

5/4

6/4

5/4

cl.b. 8b.

42

6/4

5/4

6/4

cl.b. 8b.

WH No. 2. P. 10.

44

CL.

CL.B.

CL.CB.

6/4

5/4

6/4

8b.

46

CL.

CL.B.

CL.CB.

6/4

3

5/4

5/4

8b.

pp

cresc.

mf

cresc.

ppp

cresc.

mf

cresc.

ppp

cresc.

mf

cresc.

48

CL.

CL.B.

CL.CB.

5/4

mf

dim.

6/4

5/4

mf

dim.

6/4

5/4

mf

dim.

8b.

WH Nr. 2. F. 10.

50

Cl. $\frac{6}{4}$ p cresc. dim.

Cl.b. $\frac{6}{4}$ p cresc. dim.

Cl.cb. $\frac{6}{4}$ p cresc. dim.

52

Largement $\text{♩} = 60$

Cl. $\frac{6}{4}$ mf dim. cedez p mp

Cl.b. $\frac{6}{4}$ mf dim. cedez p mf

Cl.cb. $\frac{6}{4}$ mf dim. cedez p mf

54

($\text{♩} = 60$ - Toujours)

Largement $\text{♩} = 76$

Cl. $\frac{6}{4}$ $\frac{4}{4}$ Lent accel. $\frac{8}{4}$ pp

Cl.b. $\frac{6}{4}$ $\frac{4}{4}$ pp cresc. $\frac{8}{4}$ pp

Cl.cb. $\frac{6}{4}$ $\frac{4}{4}$ $\frac{8}{4}$ pp

57 *Tres Lent*

CL. *pp*

CL.b. *pp* *pp* *pp*

CL.cb. *pp*

Tres Lent

Tres Court *Tres Calme*

7/4 6/4 4/4

59

CL. *ppp*

CL.b. *ppp*

CL.cb. *ppp*

ppp

2/1-87 R.K.

III : "Black box-Rag"
(Finale)

$\text{♩} = 120$ (♩. = $\text{♩}^{\text{♩}}$ Tojous) Λ

Swing it!

Handwritten musical score for the first system, measures 1-3. It features three staves: U.L. (Upper Left), U.B. (Upper Bass), and C.L.B. (Lower Bass). The time signature is 4/8. The key signature has one sharp (F#). The notation includes various rhythmic values, accidentals, and dynamic markings such as *sf* and *G.P.* (Grave Piano). A fermata is placed over the final note of the first measure.

Handwritten musical score for the second system, measures 4-6. It features three staves: U.L., U.B., and C.L.B. The time signature is 4/8. The key signature has one sharp (F#). The notation includes various rhythmic values, accidentals, and dynamic markings such as *sf* and *G.P.*. A large watermark "NB Moter" is overlaid on the score.

Handwritten musical score for the third system, measures 7-9. It features three staves: U.L., U.B., and C.L.B. The time signature is 4/8. The key signature has one sharp (F#). The notation includes various rhythmic values, accidentals, and dynamic markings such as *fp*, *sfz*, and *mf*. A fermata is placed over the final note of the first measure.

10

cl. *gliss.* $\frac{4}{8}$ (f)

cl.b. $\frac{4}{8}$ (mf)

cl.cb. $\frac{4}{8}$ (mf)

13

cl. $\frac{4}{8}$ *Largement* *cedez* *a mouvt.*

cl.b. $\frac{4}{8}$ *cedez*

cl.cb. $\frac{4}{8}$ *cedez*

8b. $\frac{4}{8}$

17

cl. $\frac{4}{8}$ f

cl.b. $\frac{4}{8}$ f

cl.cb. $\frac{4}{8}$ f

8b. $\frac{4}{8}$ f

20

Cl.

Cl. b.

8b.

5/8

4/8

4/8

mf

f

23

Cl.

Cl. b.

8b.

4/8

4/8

4/8

dim.

mp

mf

1518

1518

26

Cl.

Cl. b.

8b.

5/8

4/8

6/8

6/8

p

cresc.

cedez

Largement

p

WH Nr. 2. F. 10.

29 (a mouvt)

CL. 6/8 PP cresc. mf

CL.B. 6/8 PP cresc. mf

CL.CB. 8b. PP cresc. mf

31 Cedez Lent e quasi Soul. $\beta = 69$

CL. 4/8 PP gliss. slow vibr. Bow + sl. vibr. mp

CL.B. 4/8 P quasi Soul-feeling mf

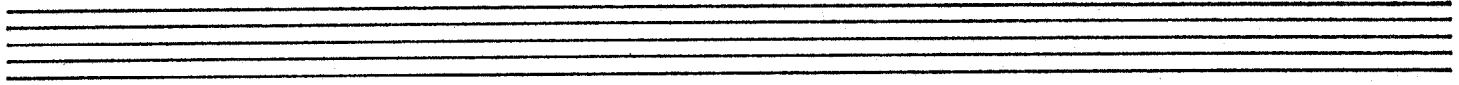
CL.CB. 8b. PP mp

35

CL. 6/8 mf vibr. 4/8 P 5/8 mf

CL.B. 6/8 4/8 P 5/8 mf

CL.CB. 8b. 6/8 mf P 5/8 mf



38 *un peu lentement*

cl. *f* *p* *f*

cl.b. *f* *fp* *f*

cl.cb. *f* *p* *f*

8b. *f* *p* *f*

Handwritten musical score for measures 38-40. The score is for three staves: Clarinet (cl.), Clarinet Bass (cl.b.), and Clarinet Bassoon (cl.cb.), with a Bassoon (8b.) part below. The key signature has one flat (B-flat). The time signature is 4/8. Measure 38 starts with a forte (*f*) dynamic. Measure 39 has a piano (*p*) dynamic. Measure 40 returns to forte (*f*). The music features various rhythmic patterns and articulations.

41 *1er mouvement (Rag)*

cl. *f* *meno f*

cl.b. *f* *fp* *meno f*

cl.cb. *f* *fp* *meno f*

8b. *f* *fp* *meno f*

Handwritten musical score for measures 41-43. The score is for three staves: Clarinet (cl.), Clarinet Bass (cl.b.), and Clarinet Bassoon (cl.cb.), with a Bassoon (8b.) part below. The key signature has one flat (B-flat). The time signature is 4/8. Measure 41 starts with a forte (*f*) dynamic. Measure 42 has a piano (*p*) dynamic. Measure 43 has a mezzo-forte (*meno f*) dynamic. The music is marked as a 'Rag' and features complex rhythmic patterns.

44 *plus vite - Rag.*

cl. *f* *st*

cl.b. *f* *st*

cl.cb. *f* *st*

8b. *f* *st*

Handwritten musical score for measures 44-46. The score is for three staves: Clarinet (cl.), Clarinet Bass (cl.b.), and Clarinet Bassoon (cl.cb.), with a Bassoon (8b.) part below. The key signature has one flat (B-flat). The time signature is 4/8. Measure 44 starts with a piano (*p*) dynamic. Measure 45 has a forte (*f*) dynamic. Measure 46 has a staccato (*st*) dynamic. The music is marked as 'plus vite - Rag' and features complex rhythmic patterns.

cadenz

„Lazy“ e plus lent. (♩ = 69)

cl. 4/8

cl.b. 4/8

cl.cb. 8b. 4/8

Vibr. 7

P

50

Rag - e tres vite (♩ = 176) (and)

cl. 6/8

cl.b. 6/8

cl.cb. 8b. 6/8

Vibr.

4/8

5/8

5/8

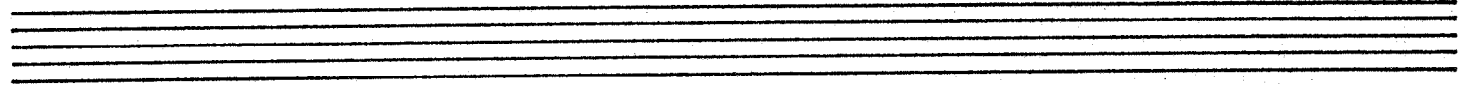
6/8

53

cl. 6/8 mp

cl.b. 6/8 mp

cl.cb. 8b. 6/8 mp



plus lent - ma Energique (P=126)

55

cl. 5/8 4/8 f

cl.b. 5/8 4/8 f

cl.cb. 8b. 5/8 4/8 f

L'press
Sacc

plus lent e sentiments P=72

58

cl. 4/8 P

cl.b. 4/8 P

cl.cb. 8b. 4/8 P

62

cl. 4/8 PP mf P PP 3/4

cl.b. 4/8 PP mf P PP 3/4

cl.cb. 8b. 4/8 PP P PP 3/4

WH Nr. 2. F. 10.

Très Lent et très calme

(66)

Cl. (C) $\frac{3}{4}$ mp $\frac{7}{8}$ p $\frac{2}{4}$ PPP $\frac{4}{4}$ PPPP

Cl. B. $\frac{3}{4}$ mp $\frac{7}{8}$ p $\frac{2}{4}$ PPP $\frac{4}{4}$ PPP PPPP

Cl. Cb. $\frac{3}{4}$ mp $\frac{7}{8}$ p $\frac{2}{4}$ PPP $\frac{4}{4}$ PPP PPPP

(4)

Stavanger 26/1-87
 R. Hornes

