

THE BIG BANG II - OPUS 59

version for ob/ci - vc - vb/el.b - Gr.P/synth - drums/percussion
and guitar [electric]

A

① 10" ② 6" ③ 8" ④ 5"

ob/ci: b_2 , pp cresc ----- pp

vc: mp cresc ----- pp

perc: \times FINGERSYMBALS

5

MIX OF P.A.; Gradually use of harmonizer → more and more *ca 4min*

perc: "weird" sounds - bells, timpani sounds etc. etc.

B

⑥ ⑦ ⑧ ⑨ ⑩ ⑪ ⑫ ⑬ ⑭

4/4 $\text{♩} = 60$ 4/4 $\text{♩} = 50$ 4/4 $\text{♩} = 40$ 4/4 $\text{♩} = 56$ 2/4

c.i.: ♩ ♩ ♩ ♩ ♩ ♩ ♩ ♩ ♩ ♩

vc: ♩ ♩ ♩ ♩ ♩ ♩ ♩ ♩ ♩ ♩

vb: ♩ ♩ ♩ ♩ ♩ ♩ ♩ ♩ ♩ ♩

Synth: ♩ ♩ ♩ ♩ ♩ ♩ ♩ ♩ ♩ ♩

perc: ♩ ♩ ♩ ♩ ♩ ♩ ♩ ♩ ♩ ♩

guit: ♩ ♩ ♩ ♩ ♩ ♩ ♩ ♩ ♩ ♩

Ad lib "space"

Registration: lush - quasi choir.

⑮ ⑯ ⑰ ⑱ ⑲ ⑳ ㉑ ㉒

4/4 6/4 $\text{♩} = 72$

c.i.: ♩ ♩ ♩ ♩ ♩ ♩ ♩ ♩ ♩ ♩

vc: ♩ ♩ ♩ ♩ ♩ ♩ ♩ ♩ ♩ ♩

vb: ♩ ♩ ♩ ♩ ♩ ♩ ♩ ♩ ♩ ♩

Synth: ♩ ♩ ♩ ♩ ♩ ♩ ♩ ♩ ♩ ♩

perc: ♩ ♩ ♩ ♩ ♩ ♩ ♩ ♩ ♩ ♩

guit: ♩ ♩ ♩ ♩ ♩ ♩ ♩ ♩ ♩ ♩

Handwritten musical score for measures 23-28. The score includes staves for c.i., vc, vb, Synth, perc, and guit. Above the staves, there are tempo markings: 4/4, 6/4, -2- (25), 4/4, 6/4 = 80 (27), and 2/4 (28). Measure numbers 23, 24, 25, 26, 27, and 28 are circled. The guitar part features a melodic line with some triplets and a 'mf' dynamic marking.

Handwritten musical score for measures 29-36. The score includes staves for c.i., vc, vb, Synth, perc, and guit. Above the staves, there are tempo markings: 4/4 = 100 (29), 4/4 = 80 (30), 4/4 = 60 (31), 4/4 (32), 4/4 (33), 4/4 (34), 4/4 (35), and 4/4 (36). Measure numbers 29 through 36 are circled. The guitar part has a melodic line with a 'fade' instruction. The synth part has a 'change' instruction. A large watermark 'MIB notover' is visible across the score.

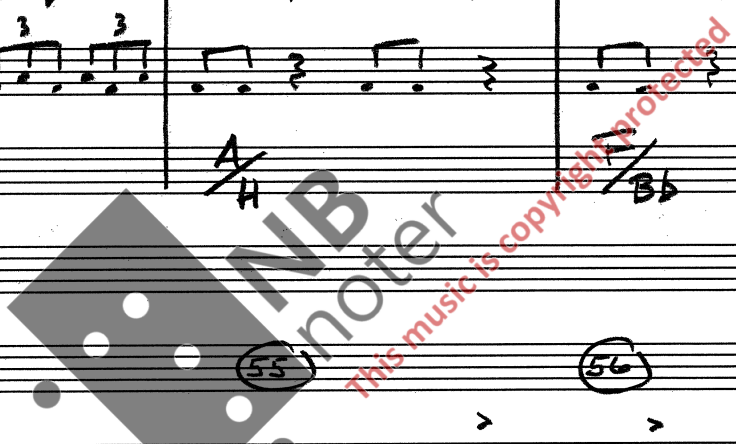
Handwritten musical score for measures 37-42. The score includes staves for vc tel. b, Synth, snare DRUMS, bass drums, and guit. Above the staves, there are tempo markings: 4/4 = 160 (37), 4/4 (38), 4/4 (39), 4/4 (40), 4/4 (41), and 4/4 (42). Measure numbers 37 through 42 are circled. The guitar part is marked 'SOLO' and 'G/A'. The drum parts show a complex rhythmic pattern with triplets.

Musical score system 1 (measures 43-47). Instruments: VC + el. b, Synth, Drums, guitar. Chords: Am, G/A.

Musical score system 2 (measures 48-52). Instruments: VC + el. b, Synth, Drums, guitar. Chords: A, Bb, Am⁹.

Musical score system 3 (measures 53-58). Instruments: VC + el. b, Synth, Drums, guitar. Includes hi-hat [half-open] and AD LIB VIOLENT. Chords: G/A, Eb^Δ.

Musical score system 4 (measures 59-63). Instruments: VC + el. b, Synth, Drums, guitar. Includes arrows in the drum part.



64 65 66 67 68 69

vc
+ el. b

Synth

Drums

guit

QUASI BREAK

(EA)
fm

70 71 72 73 74 75

vc
+ el. b

Synth

Drums

guit

A sus

F sus / E b sus

noter
this music is copyright protected

76 77 78 79 80 81

vc
+ el. b

Synth

Drums

guit

TACET CYMBALS

E b sus

Dm sus

Played 4 times

[2'50"]

THE BIG BANG II

82 83 84 85 86 87

ob

vc

el.b

Synth

Drums $\frac{6}{8}$ COMP
SOLO

guit Cm Cm⁻⁵ Cm sus G⁺

88 89 90 91 92 93 94 95 96 97

ob

vc

el.b

Synth

Drums $\frac{6}{8}$ comp half temp feeling - not too straight -

guit Cm⁹ EA Fm⁷ G⁺ Cm

98 99 100 101 102 103

ob legato, esp mf

vc

el.b REPEAT

Synth REPEAT

Drums

guit TACE! Cm Cm⁻⁵ Cm sus G⁺

104 105 106 107 108 109

ob

el.b Repeated

Synth Repeated

Drums

Cm EA Fm

A62358
R-35742

D²

(110)

Handwritten musical score for measures 110-115. The score includes staves for saxophone (sb), violin (vc), double bass (d.b.), synth, drums, and guitar (guit). The saxophone part features a melodic line with notes marked with flats and naturals. The guitar part has a simple accompaniment with a G7 chord indicated. The double bass part has a 'Repeat' section with a triplet of eighth notes. The synth part has an 'AD LIB Cm' section. The drums part has a simple rhythmic pattern. The guitar part has an 'AD LIB SOLO Cm' section.

(115)

Handwritten musical score for measures 115-120. The score includes staves for saxophone (sb), violin (vc), double bass (d.b.), synth, drums, and guitar (guit). The saxophone part features a melodic line with notes marked with flats and naturals. The guitar part has a simple accompaniment with a Cm b5 chord indicated. The double bass part has a 'legato' section with a Cm b5 chord. The synth part has an 'AD LIB Cm' section. The drums part has a simple rhythmic pattern. The guitar part has an 'AD LIB SOLO Cm' section.

(120)

Handwritten musical score for measures 120-125. The score includes staves for saxophone (sb), violin (vc), double bass (d.b.), synth, drums, and guitar (guit). The saxophone part features a melodic line with notes marked with flats and naturals. The guitar part has a simple accompaniment with a Cm chord indicated. The double bass part has a 'legato' section with a Cm chord. The synth part has an 'AD LIB Cm' section. The drums part has a simple rhythmic pattern. The guitar part has an 'AD LIB SOLO Cm' section.

Handwritten musical score for five staves: oboe (ob), violin (vc), electric bass (el.b), synth, and guitar (guit). The score is divided into five measures. The oboe staff contains complex rhythmic notation with various note values and rests. The electric bass and guitar staves show chord changes: G7, C, and C#m. The synth and drums staves are mostly empty, with a drum staff showing a single note in the first measure.

[D 3]

obo, cello, synth ; TACET

[D 4]

obo, synth ; TACET

[D 5]

obo ; TACET

[D 6]

↑ ↓ ↑ ↓ ↑

[D 7]

crescendo to [E] WHITE LIGHT

[12' 40"]



PART II



WHITE LIGHT / HVITT LYS

[Selve Big Bang]

ca 4 min



Synth etc. SOLO CHRISTIAN; Lydskulptur

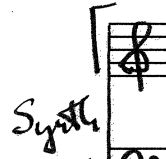


!s ca 50

SUPERNOVA I

①

⑤



FADE OUT



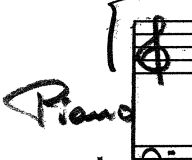
SOLO AD LIB

vb mf

comp mf

CAMPANE, GLOCKENSPIEL eller i nøkkestilfeller METAL OBJECTS.

⑩



SOLO

vb mf

comp mf

⑮



SOLO

vb

comp

(20)

(25)

Piano SOLO

vb

cmp

(30)

Piano SOLO

vb

cmp

(35)

(40)

Piano SOLO

vb

cmp

Selfdestruction of Supernova (4)

(45)

Piano SOLO [tettere og tettere mot den "stille" eksplosjonen]

vb simile ad lib

cmp ad lib

~ (50)

[ca 60"] ~ (51)

[ca 65"]

Handwritten musical score for the first section, featuring multiple staves:

- Synth:** Labeled "Galaxies", with notes on a high staff.
- Piano:** Labeled "SOLO", with notes on a middle staff.
- vb:** Labeled "AD LIB", with notes on a high staff.
- comp:** Labeled "AD LIB", with notes on a middle staff.
- Tape:** Labeled "start tape", with notes on a middle staff.
- guit:** Labeled "Sounds ad lib", with notes on a middle staff.

A bracket on the right side of the Synth and Piano staves is labeled "plötzlich borte (vanished suddenly)".

Muligens også uten TAPE.

[17'20"]

SUPERNOVA II

2/4 = 70/80

(52)

(55)

Handwritten musical score for the second section, featuring multiple staves:

- ob:** Oboe part with notes and dynamics like "mp/mt".
- Synth:** Synth part with notes and dynamics like "mp".
- Tape:** Empty staff.
- guit:** Empty staff.

A large watermark "NB noter" and "This music is copyright protected" is overlaid on the score.

(60)

(65)

Handwritten musical score for the third section, featuring multiple staves:

- ob:** Oboe part with notes and dynamics like "mp/mt".
- Synth:** Synth part with notes and dynamics like "mp".
- Tape:** Empty staff.
- guit:** Empty staff.

70

ob

Synth

Tape

guit

continued

continued

75

80

ob

Synth

Tape

guit

85

ob

Synth

Tape

guit

90

95

ob

Synth

Tape

guit

Handwritten musical score for measures 100-104. The score includes staves for oboe (ob), Synth, Tape, and guitar (guit). The oboe staff contains a melodic line with various accidentals and dynamics. The Synth staff has a rhythmic accompaniment with notes and rests. The Tape and guitar staves are marked "continued".

Handwritten musical score for measures 105-110. The score includes staves for oboe (ob), Synth, Tape, and guitar (guit). The oboe staff features a melodic line with trills and slurs. The Synth staff has a rhythmic accompaniment. The Tape staff is marked "FADE TAPE". The guitar staff is marked "FADE".

Handwritten musical score for measures 115-120. The score includes staves for oboe (ob), Synth, Tape, and guitar (guit). The oboe staff has a melodic line with slurs. The Synth staff has a rhythmic accompaniment. The Tape and guitar staves are marked "TACET".

Handwritten musical score for measures 120-125. The score includes staves for oboe (ob), Synth, Tape, and guitar (guit). The oboe staff has a melodic line with slurs. The Synth staff has a rhythmic accompaniment. The Tape and guitar staves are marked "TACET".

POCORIT [19'20"]

① 2/4 J=90-100 SUPERNOVA III

ob change to c.i.

vc

vb

Registration: Female Choir

SI

NB: only 1 keyboard player

SII

perc

guit

(10) (15)

c.i.

vc

vb

Long sustain

voices ad lib quasi Hum?

SI

SII

perc

guit

(20) (25)

c.i.

vc

vb

all voices gradually to unis G

SI

SII

perc

guit

30

35

Handwritten musical score for measures 30-35. The score includes staves for electric guitar (e.g.), violin (vc), viola (vb), strings I (s I), strings II (s II), percussion (perc), and guitar (guit). The guitar part features a prominent melodic line with a dynamic marking of *f* and a handwritten instruction: "volume pedal, overdrive".

40

Handwritten musical score for measures 40-45. This section shows more complex rhythmic patterns in the violin and viola parts, including triplets and sixteenth notes. The guitar part continues with a melodic line. A large watermark for "NB noter" is visible across the center of the page.

45

50

Handwritten musical score for measures 45-50. The score includes staves for electric guitar (e.g.), violin (vc), viola (vb), strings I (s I), strings II (s II), percussion (perc), and guitar (guit). The guitar part features a melodic line with a dynamic marking of *f* and a handwritten instruction: "Reg: Majestic basses". The percussion part includes the instruction: "AD LIB DRUMS, PERCUSSION, SPACY XJ".

xj later more and more "busy" to quasi free-jazz

55

60

Handwritten musical score for measures 55-60. The score includes staves for c.i., vc, vb, S I, S II, perc, and guit. The vc part features a 'gliss' marking and various rhythmic patterns. The guit part shows chordal accompaniment with some slurs.

65

Handwritten musical score for measures 65-75. The score includes staves for c.i., vc, vb, S I, S II, perc, and guit. The vc part has a 'trm trm' marking. The guit part includes a '3' marking. A large watermark 'NB noter' is visible across the center of the page.

vc - Very hard bow pressure

70

75

Handwritten musical score for measures 70-75. The score includes staves for c.i., vc, vb, S I, S II, perc, and guit. The vc part features a wavy line indicating tremolo or sustained notes. The guit part has a '3' marking.

(80)

Handwritten musical score for measures 80-84. The score includes staves for c.i., vc, vb, SI, SII, perc, and guit. The guitar part is marked "AD LIB". The music features complex rhythmic patterns, including triplets and sixteenth notes, with various accidentals and dynamic markings.

(85)

(90)

Handwritten musical score for measures 85-90. The score includes staves for c.i., vc, vb, SI, SII, perc, and guit. The guitar part is marked "AD LIB". The music continues with complex rhythmic patterns and includes a large section of the score that is crossed out with a large 'X'.

(95)

Handwritten musical score for measures 95-99. The score includes staves for c.i., vc, vb, SI, SII, perc, and guit. The guitar part is marked "AD LIB". The music includes a section for a Female Choir, with instructions: "AD LIB CHROMATIC (right hand, any register, also beyond a normal choir)" and "(left hand)". The guitar part is marked "AD LIB SOLO". The music features complex rhythmic patterns and includes a large section of the score that is crossed out with a large 'X'.

Handwritten musical score for measures 100-105. The score includes staves for c.i., vc (SOLO), vb, ST (CHOIR AD LIB CHROMATIC), SII, perc (AD LIB), and guit (AD LIB WITH BOW, METAL PIECES etc.).

(110)

(115)

Handwritten musical score for measures 110-115. The score includes staves for c.i., vc (SOLO), vb, S I (CHOIR), S II, perc, and guit.

(120)

Handwritten musical score for measures 120-125. The score includes staves for c.i., vc (SOLO), vb, S I, S II, perc, and guit.



(125)

(130)

Handwritten musical score for measures 125-130. The score includes staves for C.I. (Cello/Double Bass), VC (Violoncello), VB (Viola), S I (Soprano I), S II (Soprano II), Perc (Percussion), and Guit (Guitar). The C.I. part features a melodic line with various accidentals and dynamics. The VC part is marked 'solo'. The S I part is marked 'choir'. The S II part has a melodic line with some accidentals. The Perc and Guit parts are mostly empty.

(135)

Handwritten musical score for measures 135-140. The VC part is marked 'solo (very intense)'. The S II part has a melodic line with some accidentals. The Perc and Guit parts are mostly empty.

(140)

(145)

Handwritten musical score for measures 140-145. The VC part is marked 'solo'. The S I and S II parts have some notes. The Perc and Guit parts are mostly empty.

(150)

Handwritten musical score for measures 150-155. The S I part has the instruction 'Gradually moving towards G major'. The S II part has a melodic line. The Perc and Guit parts are mostly empty.

(155)

Handwritten musical score for measures 155-160. The S I part has a melodic line. The S II part has a melodic line. The Perc and Guit parts are mostly empty.

1 RUBATO - SLOW

4/4 PART III "Den Blä Planeten" (1) (5)

ob
 Synth
 guit

Reg: "beautiful"
 volume pedal, overdrive, esp

(10)

ob
 Synth
 guit

(15)

ob
 Synth
 guit

(20)

ob
 Synth
 guit

m. esp
 mf

25

Handwritten musical score for measures 25-30. The score is written for three staves: **ob** (oboe), **Synth** (synthesizer), and **guit** (guitar). The oboe staff contains a melodic line with a triplet of eighth notes in the first measure. The synthesizer staff features a sequence of chords, with some notes marked with **pp** (pianissimo). The guitar staff is mostly silent, with a few notes appearing in the final measure of the system.

30

35

Handwritten musical score for measures 30-35. The **ob** staff is mostly silent. The **Synth** staff continues with a series of chords, some marked with **pp**. The **guit** staff has a melodic line with eighth notes and rests.

40

Handwritten musical score for measures 35-40. The **ob** staff has a melodic line with some triplets. The **Synth** staff has a complex chordal texture with many notes, some marked with **pp**. The **guit** staff has a melodic line with eighth notes and rests.

Rit - 45

$\text{♩} = 40$

Handwritten musical score for measures 40-45. The **ob** staff has a melodic line with triplets. The **Synth** staff has a complex chordal texture with many notes, some marked with **pp**. The **guit** staff has a melodic line with eighth notes and rests.

Empty musical staves at the bottom of the page.

♩ = 76 CODA : "HINSIDES" [P.A. reverb]

① ⑤

Synth mp quasi "choir"

⑩

Synth

⑮ ⑳

Synth

⑳ ㉓

c.i

vc

Synth

mp

mp

㉓ ㉗

c.i

vc

Synth

f

f

f

f

Repeated 2-3 minutes

(40)

(45)

Handwritten musical score for the first system, measures 40-45. The score includes parts for E.B., Synth, Drums, and guitar.

E.B. Chords: E, Ebm, Dm, A/C#, Cm, C7/F#, G, F

Synth Chords: E, Ebm sus, Dm, A, Cm, C7/F#, G sus, Eb

Drums 3 HEAVY

guit SOLO

Measures 40-45 are marked with repeat signs.

Played 3 times

(50)

(55)

10-12" (56) 1"

Handwritten musical score for the second system, measures 50-56. The score includes parts for ab, vc, E.B., Synth, Drums, and guitar.

ab Chords: G, Am, E

vc Chords: G, Am, E

E.B. Chords: G, Am, E

Synth Chords: G, Am, E

Drums HEAVY

guit Chords: G, Am, E

Measures 50-56 are marked with repeat signs. A bracket labeled "AD LIB E" spans measures 54-56.

BIG BANG I : 23/1-90

BIG BANG II 8/12-92

Cleje Rypdal

