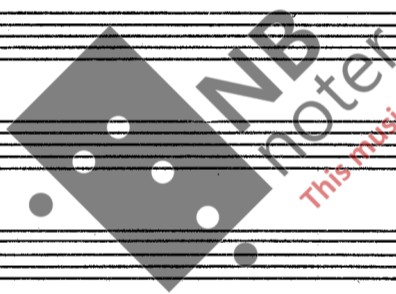


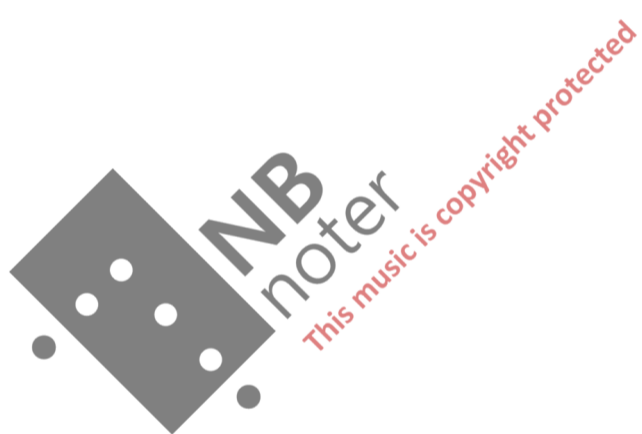
10 x 10

Terje Rypdal

- OPUS 28 -



This music is copyright protected



TERJE RYPDAL:

10 x 10

FOR IMPROVISERS

INSTRUMENTS

4
SOPRANO SAXOPHONE
CORNO INGLESE
TRUMPET
TROMBONE

SCORE IN C.

1 POLYPHONIC SYNTHESIZER
1 FENDER ELECTRIC PIANO
STEREO WITH ECHO etc.

1 ELECTRIC GUITAR with echo, overdrive, volume pedal.

1 CELLO [vc]

1 CONTRABASS [vb] / ELECTRIC BASS

2 PERCUSSION; 2 DRUMSETS, 1 GLOCKENSPIEL, CABAZA

[10 MUSICIANS] CHIMES, HANDBELLS, TAMBOURINES ETC.

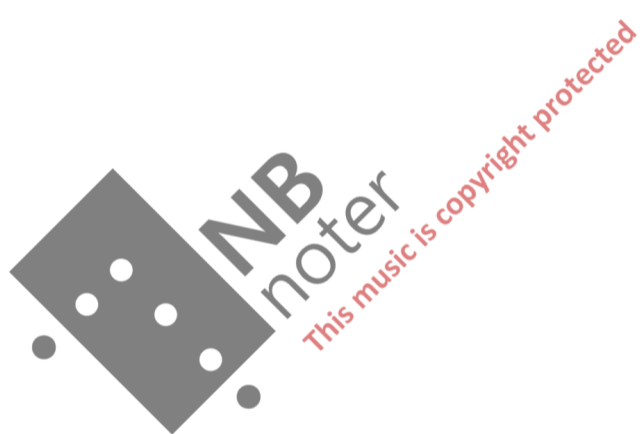
[SEE NR 1.]

IF POSSIBLE; 2 GONGS

AND FOR "SPECIAL-CONCERTS"; TIMPANI

[nr 1, PERC. SOLO NR 7 AND EPILOGUE]

DURATION: ca 38 MINUTES.



FOR IMPROVISERS.

N 1

"INTRO"

TUTT I PERCUSSION AD LIB

~ ①

BELLS, CHIMES, TAMBOURINES ETC

+ 2 DRUMSETS WITH GONGS ETC.

[USE WHAT IS AVAILABLE]

DIRECTION: QUASI "FREEBAG" WITH CRESCENDI

AND DECRESCENDI CONTINUOUSLY [IN A

"RASHED ALL-DIRECTION" OR SIMILAR]

NB: THE SECTION MUST NOT HAVE A STEADY BEAT AND "ROCK-RIFFS" MUST ONLY BE ACCIDENTAL.

GRADUALLY THE PERCUSSIONIST [THE 2 DRUMSETS WITH GONGS, BELLS etc.] IS LEFT

AS SOLOISTS AS THE OTHER

PLAYERS PREPARE FOR

THE NEXT

SECTION.

ca 2'

[Duration decided by performers]

NR. 2.

"10 x 10"

ca 10"

2

Handwritten musical score for various instruments:

- Sopr. sax
- Corno inglese
- Trumpet
- Trambone
- Synth (Registration: "Archi" + "Grand Organ"; 2 octaves - x)
- el. guit
- vc (Violoncello)
- vb (Violino)
- Perc. 1 (Continuo nr. 1)
- Perc. 2 (Continuo nr. 1)

The score includes dynamic markings such as *mf* and *ff*, and articulation symbols like accents and slurs. A large watermark "NB noter" is visible across the middle of the page.

2] The written pitch is the upper octave [same pitch as vc] - the under octave; same pitch as vb.

~ ③

ca 10"

Synth

vc col Synth

vb col Synth

PERC [simile]

1 & 2

~ ④

ca 10"

cl. (2 3 4)

Synth

vc col Synth

vb col Synth

Perc. 1 & 2

(More subtle, "answering" the phrase)

~ ⑤

NB x) 10 - 15"

cl. (7)

trb (7)

Synth

vc col Synth

vb col Synth

Perc 1 & 2

[6-8"]

x) shorter at reprise 6-8"

⑥ 2-3" ⑦ 4- 15" repeat ad lib

S. sax (7) ff mf

c. i. (7) ff mf

tp (7) f mf

tbu (7) f mf

Synth (7) mf

el.g. (7) f mf

vc col Synth tacet

vb col Synth tacet

Perc. 1&2 simile

*1) El.g.; Volume pedal overdrive echo, no chorus.

⑧ repeat ad lib 5" ⑨ 5"

S. sax sempre mf repeat ad lib

c. i. sempre mf repeat ad lib

tp sempre mf repeat ad lib

tbu sempre mf repeat ad lib

el.g. sempre mf repeat ad lib

Synth + vc + vb f

Perc. 1&2 simile

ca. 3'50"

~ (10)

5"

~ (11)

5"

S. sax
+ C. i.
+ tp +
+ bn + elg.

repeat ad lib

Synth
+ vc
+ vb

Perc
1 & 2.

ft simile

~ (12)

6-7"

~ (13)

3-4"

S. s.
+ C. i.
+ tp
+ bn
+ elg.

Synth
+ vc
+ vb

Perc
1 & 2

~ (15)

6"

6"

S. s.
+ C. i.
+ tp
+ bn
+ elg.

Synth
+ vc
+ vb

Perc.
1 & 2

~ (17) ~ (18) 4-5"

S.s
+ ci
+ tp
+ tbn
+ el.g

Synth
+ vc
+ vb

Perc
162

~ (19) 6" ~ (20) 5-6"

S.s
+ ci
+ tp
+ tbn
+ el.g

Synth
+ vc
+ vb

Perc
162

crescendo...

crescendo

crescendo

~ (21) 3-4" ~ (22) 10"

S.s
ci
tp
tbn
el.g
F
Synth
vc+vb
Perc
162

morendo

morendo

morendo

morendo

morendo

morendo

dim

dim

morendo

2 = ca 72 - 7 -
4 -90 RUBAYO [but not too slow]

(23) (25)

Synth

vc mp mf

vb mp mf

(30) (35)

vc

vb

(40)

vc

vb mp

cresc - - -

(45)

vc

vb

f mp f > mp < > r > rr

(50)

vc

vb

mf fr

legato

55

Handwritten musical notation for measures 55-60. The system includes a grand staff with treble and bass clefs. The right hand (VC) starts with a *mp* dynamic. The left hand (VB) starts with a *f* dynamic. The music features eighth and sixteenth notes with various articulations and slurs.

60

65

Handwritten musical notation for measures 60-65. The system includes a grand staff. The right hand (VC) has a *ff* dynamic. The left hand (VB) has a *ff* dynamic. The music includes triplets and slurs. A *cresc.* marking is present above the staff.

70

Handwritten musical notation for measures 65-70. The system includes a grand staff. The right hand (VC) has a *ff* dynamic. The left hand (VB) has a *ff* dynamic. The music includes triplets and slurs. A *dim.* marking is present above the staff. A watermark "NBS noter" is visible over the page.

75

Handwritten musical notation for measures 70-75. The system includes a grand staff. The right hand (VC) has a *mf* dynamic. The left hand (VB) has a *mf* dynamic. The music features slurs and a *dim.* marking. A *ord* marking is present above the staff.

80

Handwritten musical notation for measures 75-80. The system includes a grand staff. The right hand (VC) has a *mf* dynamic. The left hand (VB) has a *mf* dynamic. The music features slurs and a *dim.* marking.

85

Poco Rit

Handwritten musical notation for measures 80-85. The system includes a grand staff. The right hand (VC) has a *mf* dynamic. The left hand (VB) has a *mf* dynamic. The music features slurs and a *dim.* marking. A *Poco Rit* marking is present above the staff.

ca 6'50"

Nr. 3

90

ca 10"

very high sounds

rr

91

30-45"

SOLO AD LIB - MOSTLY PIANISSIMO AND "FRAGILE"

[NR. 3 SHOULD FUNCTION AS A TRANSITION FROM NR. 2 TO NR. 4.]

92

10-12"

1bn solo Ad lib

c.i.

93

10-12"

1bn solo Ad lib

c.i.

vc

vb

mp

gliss

NB CONDUCTOR : Make sure that the piece "doesn't stop"
- forward motion.

10-12"

~ (94)

Tbn Ad lib solo

ci. $\text{7:} \text{6}$ $\text{7:} \text{6}$ $\text{7:} \text{6}$

vc $\text{7:} \text{6}$ $\text{7:} \text{6}$ $\text{7:} \text{6}$ 3 b

vb $\text{7:} \text{6}$ $\text{7:} \text{6}$ $\text{7:} \text{6}$ 3 b

10-12"

~ (95)

Tbn Ad lib solo

10-15"

~ (96)

Tbn Ad lib solo

ci. mf quasi gliss.

10-12"

~ (97)

Tbn Ad lib solo

ci. f gliss

10-15"

~ (98)

Tbn Ad lib solo

ci. f

vc f

vb col vc

~ (99)

6" - 11" ~ (100)

6-8"

Ad lib solo

(101) 10-15"

pp Quasi morendo

[ca 10']

Nr. 4.

4/4 = 126 DEFINITE HALFTempo FEELING [1st and 3rd beat]

(102) (105)

Synth Reg: Blend of archi and mellow brass. (ve, vb)

[sounding 8' basso] mf

Elp mf

VC esp.

H.H. SNARE BASS DR.

Perc. CABAZA

xxi

DIRECT TO PAGE 13.

x] El. piano in stereo with chorus and/or vibrato.

- 11 -

xxi Short chord / phrase - fills may be added [As in a normal jazz or rock context]

ONLY AT REPRISE

S. sax

C. i.

HARMON MUTE [CLOSE TO MIKE OR AMPLIFIED]

ONLY AT REPRISE

ONLY AT REPRISE

Synth

SOLO AD LIB [BUT CHORDS IN LEFT HAND]

El. p

El. g.

NB

VC

AT REPRISE [MOTOWN SOUND]

1

Perc

2

x) Electric guitar: Single string background comp fills - "secco"
 (palm of right hand lightly upon strings) and
 "open" fills using two or more strings.



NB: Bars 106 - 109 OMITTED.

S.s. *p* *f* *3*

col. s. sax

trp col. s. sax

dbw B

Synth

L

F solo

El. p G / / / A / / / E / / /

L (E) (E)

El. g G / / / A / / / E / / /

(E)

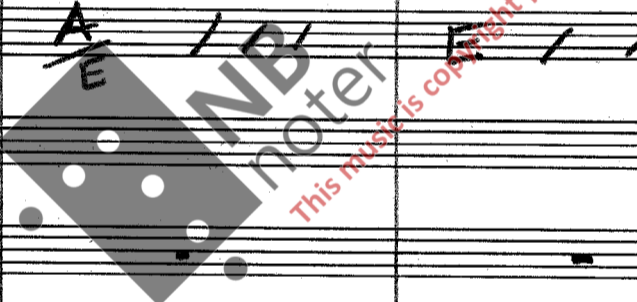
vc

db

F 1 *smile*

Perc

L 2 *smile*



S.s. *mf*

C.i. col s.sax

tp col s.sax

abu **B**

Synth

ELp *sono*
F#m
(E)

ELg F#m
E

vc *sono*

d.b.

Perc 1 *Simile*

Perc 2 *Simile*

Handwritten musical score for multiple instruments. The score is organized into systems:

- Top System:** S.s. (Soprano Saxophone), c.i. (Cello/Double Bass), tp (Trumpet), and dbn (Double Bass).
- Middle System:** Synth (Synthesizer), ELp (Electric Piano), and Elg (Electric Guitar).
- Bottom System:** vc (Violoncello), cl.b. (Clarinet Bass), F1 (Flute 1), and Perc. (Percussion).

Key annotations and markings include:

- Tempo/Performance:** *mp* (mezzo-piano), *SOLO*, *1.* (first ending), *simile*, and *[Tacet 1st]*.
- Chords:** F#m7 (E) and E.
- Watermark:** A large diagonal watermark reads "NB: noter music is copyright protected".

NB: BARS 126 - 129 OMITTED.

NB

2. (130)

S. sax + G.I. + tp

SOLO

SYNTH C# / / / / . F# / / / / .

EL.P. 9 F# / C# / / / / .

El.g. C# / / / / . F# / C# / / / / .

vc

cl.b.

Perc. 1, 2 *Simile* ~~~~~

(135)

SOLO

SYNTH C# / / / / . F# / / / / .

EL.P. 9 F# / C# / / / / .

El.g. C# / / / / . F# / C# / / / / .

cl.b.

Perc. 1 *Simile* ~~~~~

2 CHANGE TO DRUMS. [DRUMSET]

END OF SOLO.

NB: ~~~~~ SOLO

[ca 11' 50"]

Nr. 5

HEAVY SOLO AD LIB (140)

El. Guitar Solo

Synth

El.p

El.b.

Perc. 1 *Similar to*

Perc. 2 *similar to Perc 1 but more "solicistic"*

SOLO (145)

El.g.

Synth *F#m7*

El.p

El.b.

Perc. 1

Perc. 2

SOLO *mp*

Handwritten musical score for a solo section. The score includes staves for Flute (Fl.g.), Trumpet (tp), Trombone (tb), Synth, and Percussion (Perc 1,2). The key signature is G major (one sharp) and the time signature is 4/4. The first staff shows a sequence of chords: G, A, E, and a final measure with a slash. The trumpet and trombone parts have notes with stems and beams. The synth part has a similar chord sequence. The percussion part has a rhythmic pattern of eighth notes. The Perc 1,2 part has a wavy line indicating a specific sound or effect.

150

Handwritten musical score for a section starting at measure 150. The score includes staves for Flute (Fl.g.), Saxophone (S.s.), Clarinet (cl.), Trumpet (tp), Trombone (tb), Synth, and Percussion (Perc). The key signature is G major and the time signature is 3/4. The first staff shows a sequence of chords: G, A, E, and a final measure with a slash. The saxophone and clarinet parts have notes with stems and beams. The trumpet and trombone parts have notes with stems and beams. The synth part has a similar chord sequence. The percussion part has a rhythmic pattern of eighth notes. The Perc 1,2 part has a wavy line indicating a specific sound or effect.

Handwritten musical score for system 155. The score is in 3/4 time and consists of five staves. The top staff is labeled 'Elg.' and contains chord symbols: A / / /, C / / /, F#m^{7sus} / / /, and E / / /.

The second staff is a grand staff containing:

- S.s. (Soprano Saxophone): Treble clef, notes G4, A4, B4, C5.
- ci. (Clarinet): Treble clef, notes G4, A4, B4, C5.
- tp (Trumpet): Treble clef, notes G4, A4, B4, C5.
- tb (Tuba): Bass clef, notes G2, A2, B2, C3.

The third staff is labeled 'Synth' and 'El.p.' and contains chord symbols: A / / /, C/G / / /, F#m^{7sus} / / /, and E / / /.

The fourth staff is labeled 'd.b.' and contains a bass line with notes G2, A2, B2, C3.

The fifth staff is labeled 'Per 12' and contains a rhythmic pattern.

Handwritten musical score for system 160. The score is in 3/4 time and consists of five staves. The top staff is labeled 'Elg.' and contains chord symbols: E / / /, A / / /, C / / /, F#m^{7sus} / / /, and a slash /.

The second staff is a grand staff containing:

- S.s. (Soprano Saxophone): Treble clef, notes G4, A4, B4, C5.
- ci. (Clarinet): Treble clef, notes G4, A4, B4, C5.
- tp (Trumpet): Treble clef, notes G4, A4, B4, C5.
- tb (Tuba): Bass clef, notes G2, A2, B2, C3.

The third staff is labeled 'Synth' and 'El.p.' and contains chord symbols: E / / /, A / / /, C/G / / /, F#m^{7sus} / / /, and a slash /.

The fourth staff is labeled 'd.b.' and contains a bass line with notes G2, A2, B2, C3.

The fifth staff is labeled 'Per 12' and contains a rhythmic pattern.

- 2 1 -
(165)

3x

Handwritten musical score for the first system, measures 165-168. The score includes staves for Elg., Synth, Flp, and Perc. The key signature is C# and the time signature is 3/4. The first staff (Elg.) has notes C# / / / in the first measure, followed by rests in the subsequent measures. The second staff (Synth) has notes C# / / / in the first measure, followed by rests. The third staff (Flp) has a melodic line in the first measure, followed by rests. The fourth staff (Perc) has a rhythmic pattern in the first measure, followed by rests.

Handwritten musical score for the second system, measures 169-172. The score includes staves for Elg., S.s., C.i., Flp, Synth, and Perc. The key signature is C# and the time signature is 3/4. The first staff (Elg.) has notes C# / / / in the first measure, followed by rests. The second staff (S.s.) has a melodic line with dynamics markings: *tr*, *cresc*, and *fff*. The third staff (C.i.) has a wavy line representing a sustained sound. The fourth staff (Flp) has a wavy line representing a sustained sound. The fifth staff (Synth) has notes C# / / / in the first measure, followed by rests. The sixth staff (Perc) has a rhythmic pattern in the first measure, followed by rests.

REPEAT NR. 5.

[ca 15'10" with repetition]

OVERALL DYNAMICS FOR NR. 5

SHOULD BE DECIDED DURING REHEARSALS.

Nr. 5 B.

~ (172) ~~~~~>

ELECTRIC BASS - SOLO

CONTINUING FROM NR 5 BASSLINE

TO A FREE SOLO

THEN GRADUALLY (OR ABRUPTLY)

→ Nr. 6.

Duration bass solo 2-3 min.
 [or shorter]



Approx. dur. of piece so far

18 min.

IF THE BASSPLAYER WANTS A DRUM BACKGROUND;
ARRANGE THIS DURING REHEARSALS

HOWEVER THE COMPOSER WOULD
PREFER A SOLO WITHOUT $\frac{4}{4}$ SWING [IN THE
OLD SENSE] AND WALKING BASS.

Nr. 6 ♩ = ca 90 HALF TEMPO FEELING. (175)

4/4 AD LIB SOLO

Trumpet SOLO

VC

el. b. AD LIB

Drums COMP

Perc Glocken spiel

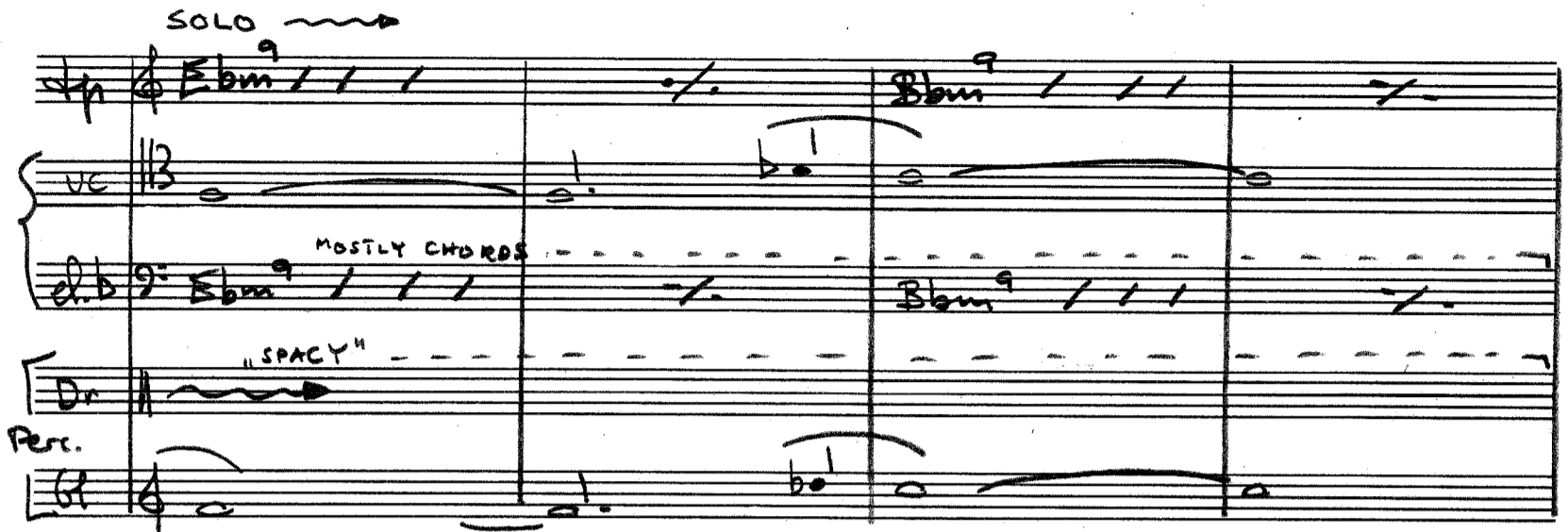
AD LIB EL. bass ; AD LIB BASS PATTERNS, CHORDS etc [with trumpet solo] - BUT FRAGMENTS FROM PREVIOUS BASSLINES MUST ALSO BE USED.

Drums: COMP SIMILAR TO NR 4 AND NR. 5 BUT SOMEWHAT "LOOSER" - [with trumpet solo]

SOLO mp

(180)

SOLO 



db MOSTLY CHORDS

Dr "SPACY"

Perc.

185

SOLO 



Gtr

Synth X 

db

Dr 

Perc 

This music is copyright protected

X SYNTH: Very orchestral - like a string arrangement.

SOLO ~~~~~

Drum: A / / / C/G / / / F#m^{2sus} / / / FΔ⁻⁵ / / /

Synth: A / / / C/G / / / F#m^{2sus} / / / FΔ⁻⁵ / / /

el.b. 9: A / / / C/G / / / F#m^{2sus} / / / FΔ⁻⁵ / / /

Drums: ~~~~~

SOLO ~~~~~

Drum: Ebm⁹ / / / - / - / Bbm⁹ / / / - / - /

Synth: "SPACY" - - - - - Ebm⁹ / / / - / - / Bbm⁹ / / / - / - /

vc: ~~~~~

el.b. "CHORDS" - - - - - Ebm⁹ / / / - / - / Bbm⁹ / / / - / - /

Drum: "SPACY" - - - - - ~~~~~

Perc. ~~~~~

SOLO ~~~~~

Drum: A / / / C/G / / / F#m^{2sus} / / / FΔ⁻⁵ / / /

Synth: col dp ~~~~~

vc: ~~~~~

el.b.: col dp ~~~~~

Drum: COMP ~~~~~

Perc. ~~~~~

SOLO \rightsquigarrow

Synth col tp

ve B

Perc.

A / / / C/G / / / F#m 7 sus / / / F#m 7 / / /

205

SOLO \rightsquigarrow

Synth "SPACY" Ebm9 / / / Bbm9 / / /


ve B

"CHORDS" Ebm9 / / / Bbm9 / / /

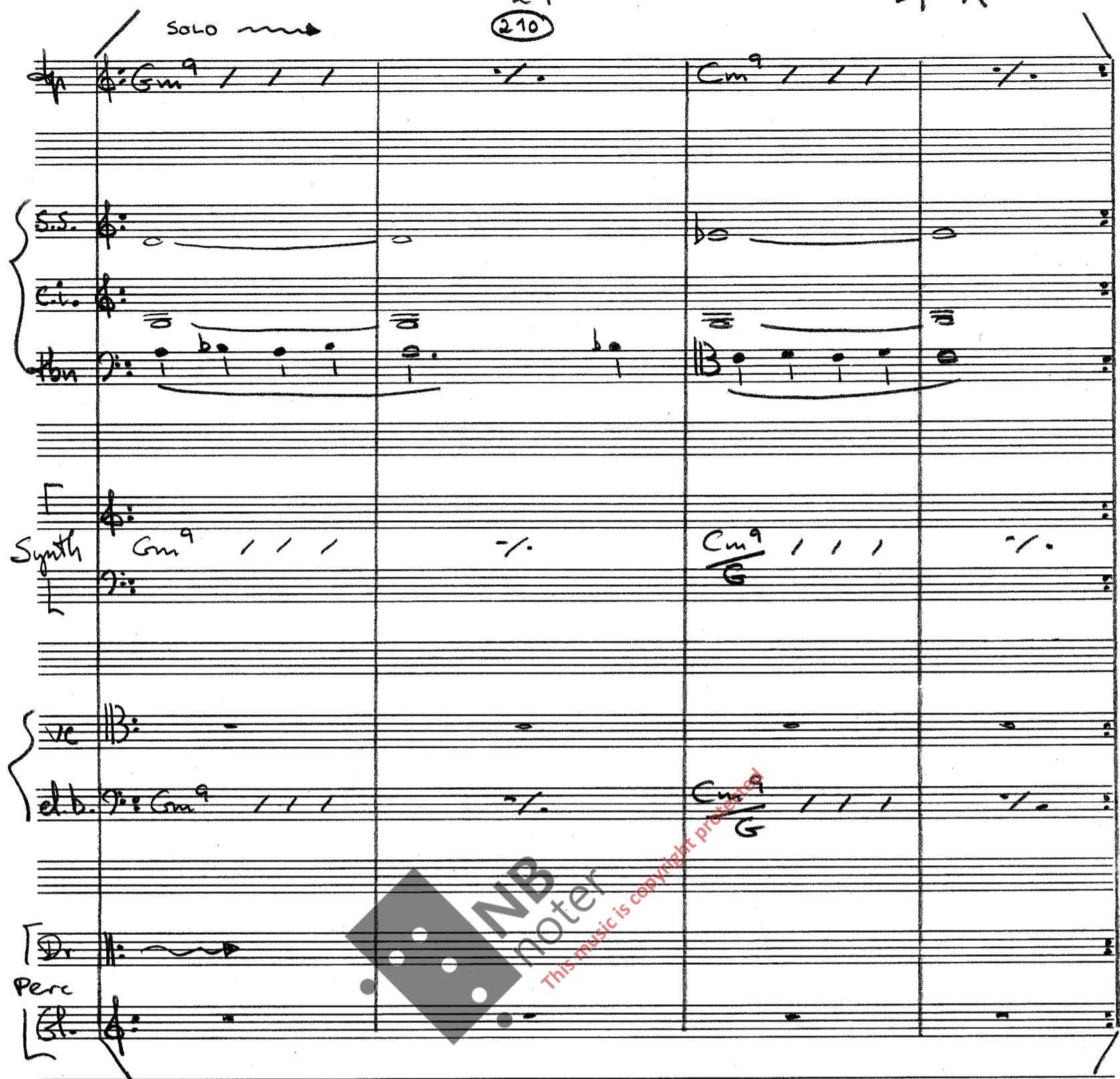
"SPACY"

Perc.

Ebm9 / / / Bbm9 / / /

SOLO 

(210)



NB: BAR (209) — (212)

START PP AND MAKE A SLOW CRESCENDO TO MP.

(215)

SOLO

Handwritten musical score for multiple instruments:

- HPA:** Chords: Cm⁹ / / / - / Cm⁹ / / / - /
- SS.:** tr *tr* (b₂)
- Cin.:** *tr* (b₂)
- H. B.:** *tr* (b₂)
- Synth:** Chords: Cm⁹ / / / - / Cm⁹ / / / - /
- VC:** mf *tr* (b₂)
- Cl. b.:** Cm⁹ / / / - / Cm⁹ / / / - /
- Dr.:** *tr* (b₂)
- Perc.:** mf *tr* (b₂)


NB: BAR (213) — (216)


FROM MP/MF TO FF.

x) C. INGLESE: TRILLER Eb-F MAY BE USED

Nr 7

ca 10"

SOLO  (217)


ff 

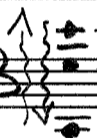
ff


ff

ff

ff

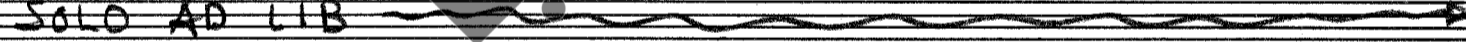
Synth G MAJOR 

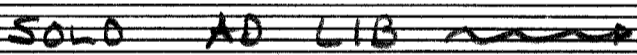
ve  OPEN G STRING

ff 

ff

START PERCUSSION SOLO

PERC. 1 SOLO AD LIB 

2 SOLO AD LIB 

[ca 21']

~ (218)

PERCUSSION SOLO [DUET]

USING ALL AVAILABLE PERCUSSION

THE SOLO SHOULD RISE TO

THE CLIMAX OF "10 x 10"

DURATION: APPROXIMATELY 5 MINUTES.

NB: REMEMBER, THE INTRO AND ALSO THE
COMP FIGURES OF NR. 4, NR. 5 & NR. 6

AND INCORPORATE AT LEAST THE FEELING
OF THESE SECTIONS IN THE SOLO.

[ca 26']

Nr. 8

♩ = 152 [for synth.]

REGISTRATION: "CELLI AND TROMBONES" (220)

SYNTH *ff* > > >

PERC. 1 CONTINUE SOLO

PERC. 2 CONTINUE SOLO

SYNTH

PERC. 1

PERC. 2

SYNTH

PERC. 1, 2

SYNTH

PERC. 1, 2

10-15"

~ (233)

SYNTH "WAVES OF SOUND" AD LIB
 (9) Ebm

PERC 1,2 "SPACY"

10-15"

~ (234)

SYNTH "WAVES OF SOUND"
 (9) Bbm

PERC MORENDO

10-15"

1. ~ (235)

SYNTH "WAVES OF SOUND"
 (9) Gm⁹

PERC MORENDO NIENTE

X) REPRISÉ FROM (221) ; PERCUSSION TACET.

10-15"

2. ~ (236)

mp cresc

SYNTH "WAVES OF SOUND"
 (9) Gm⁹

[28'30"]

4/4 = 126-144 (240)

c.i. *f*

SYNTH

(245)

3 3

c.i.

SYNTH

(250)

c.i.

SYNTH

2/4

c.i. *f*

SYNTH

4

(255)

Rit - - - - -

c.i.

f

SYNTH

♩ = 100 - 112

(260)

(265)

c.i.

mf

dim - - - - - pp f

SYNTH

mf

dim - - - - - pp f

dim - - - - -

♩ = 80 - 90

(270)

c.i.

mp

SYNTH

mp

mp

(275)

c.i.

SYNTH

NB: CONDUCTOR : "forward motion" - increase tempo if necessary.

Handwritten musical score for measures 280-284. The score consists of three staves: a vocal line (labeled 'S.V.'), a piano accompaniment line (labeled 'F'), and a synthesizer line (labeled 'SYNTH'). The tempo is marked as $\text{♩} = 60-64$. Measure 280 is circled. The key signature has one sharp (F#).

Handwritten musical score for measures 285-289. The score consists of three staves: a vocal line (labeled 'S.V.'), a piano accompaniment line (labeled 'F'), and a synthesizer line (labeled 'SYNTH'). The tempo is marked as $\text{♩} = 60-64$. Measure 285 is circled. The key signature has one sharp (F#).

Handwritten musical score for measures 290-294. The score consists of three staves: a vocal line (labeled 'S.V.'), a piano accompaniment line (labeled 'F'), and a synthesizer line (labeled 'SYNTH'). The tempo is marked as $\text{♩} = 60-64$. Measure 290 is circled. The key signature has one sharp (F#).

Handwritten musical score for measures 295-299. The score consists of three staves: a vocal line (labeled 'S.V.'), a piano accompaniment line (labeled 'F'), and a synthesizer line (labeled 'SYNTH'). The tempo is marked as $\text{♩} = 60-64$. Measure 295 is circled. The key signature has one sharp (F#).

Nr. 9

Handwritten musical score for measures 300-304. The score consists of four staves: a vocal line (labeled 'V.C.'), an electric piano line (labeled 'E.L.P.'), a piano accompaniment line (labeled 'F'), and a synthesizer line (labeled 'SYNTH'). The tempo is marked as $\text{♩} = 60$ and the dynamics as 'Molto esp.'. Measure 300 is circled. The key signature has one sharp (F#). The piano accompaniment part includes chord symbols: A, C/G, F#m^{2 sus}, and FΔ. The word 'MORANDO' is written below the piano accompaniment line.

vc B

EL.P. B

A / / / C/G / / / F#m⁷sus / / / FA / / /

vc B

EL.P. B

Ebm⁹ / / / Bbm⁹ / / / / .

cresc - - - - -

vc $\text{B} \#$

EL.P. $\text{B} \#$

Bb⁹ / / / / .

ff

[ca 31' 35"]

Nr 10 | 4 ♩ = 126 [ca]

305

QUASI "SOLO" - MOSTLY CHORDS.

EL.P *f* G / / / A / / / E / / /

COMP - AS IN NR 4 & NR 5

PERC COMP - AS IN NR 4 & NR 5

SOLO AD LIB

Con G / / / A / / / E / / /

EL.P G / / / A / / / E / / /

EL.G *col. el. p.*

EL.B

PERC.

310

SOLO ~~~~~>

315

Handwritten musical score for measures 310-315. The score includes staves for Trumpet (Tbn), Electric Piano (EL.P), Electric Guitar (EL.G.), Electric Bass (EL.B), and Percussion (PERC.).

- Tbn:** Chords: F#m7, E, F#m7. Rhythmic notation: / / /, / / /, / / /.
- EL.P:** Chords: F#m7, E, F#m7. Rhythmic notation: / / /, / / /, / / /.
- EL.G.:** Pedal point (pedal el.p.) with a wavy line.
- EL.B:** Bass line with eighth notes and slurs.
- PERC.:** Drum notation with two parts.

AD LIB SOLO ~~~~~>

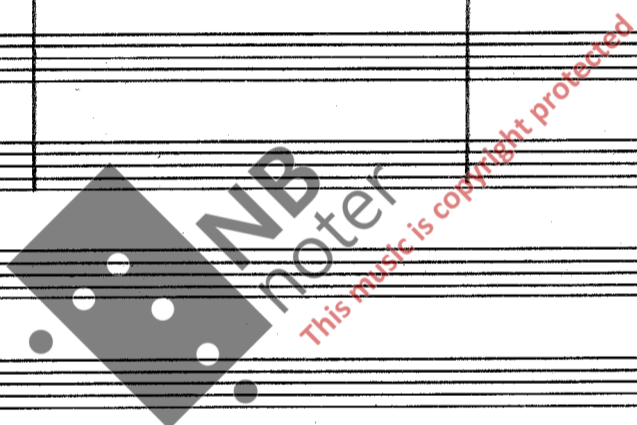
320

Handwritten musical score for measures 320-325. The score includes staves for Saxophone (S.S.), Trumpet (Tbn), Electric Piano (EL.P), Electric Guitar (EL.G.), Electric Bass (EL.B), and Percussion (PERC.).

- S.S.:** Chords: C#m7, F#m7. Rhythmic notation: / / /, / / /.
- Tbn:** Chords: C#m7, F#m7. Rhythmic notation: / / /, / / /.
- EL.P:** Chords: C#m7, F#m7/C#. Rhythmic notation: / / /, / / /.
- EL.G.:** Pedal point (pedal el.p.) with a wavy line.
- EL.B:** Bass line with eighth notes and slurs.
- PERC.:** Drum notation with two parts.

AD LIB SOLO

Handwritten musical score for an AD LIB SOLO section. The score includes staves for guitar (Gtr), strings (s.s.), double bass (d.b.), drums (drum set), synthesizer (SYNTH), electric piano (ELP), electric guitar (EL.G.), and percussion (PERC). The guitar part features chords G, A, and E. The strings part has a melodic line with a triplet and a fermata. The drums and percussion parts are marked with wavy lines. The electric piano part has chords G/E, A/E, and E. The electric guitar part has a melodic line with a fermata. The synthesizer part has a simple melodic line. The score is marked with 'mf' and 'col s.s.'.




330

SOLO →


Handwritten musical score for system 330. It includes staves for Trumpet (Tp), Saxophone (S.S. + C.I.), Trombone (Tbn), Synth, Electric Piano (EL.P.), Electric Guitar (EL.G.), Electric Bass (EL.B.), and Percussion (PERC. 1&2). The score shows a solo section with notes and rests, dynamics like 'mf', and various musical notations.

SOLO →


Handwritten musical score for system 335. It includes staves for Trumpet (Tp), Saxophone (S.S. + C.I.), Trombone (Tbn), Synth, Electric Piano (EL.P.), Electric Guitar (EL.G.), Electric Bass (EL.B.), and Percussion (PERC. 1&2). The score shows a solo section with notes and rests, dynamics like 'Loco', and various musical notations.

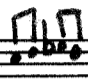
SOLO 

Drum: C# / / / / . / . F# / / / / . / . C# / / / / . / . F# / / / / . / .

SYNTH: 

EL.P: C# / / / / . / . F# / / / / . / . C# / / / / . / . F# / / / / . / .

EL.G: col. el.p. 

EL.B:  / . / . / . / . / . / . / .

PERC:

1 & 2

SOLO 

Drum: Gm⁹ / / / / . / . Cm⁹ / / / / . / .

S.S. 

C.I. 

Tbn 

SYNTH: 

EL.P: Gm⁹ / / / / . / . Cm⁹ / / / / . / .

EL.G: col. el.p. 

EL.B:  / . / . / .

PERC:

1 & 2

350 SOLO

tr

S.S.

Cl.

Tbn

SYNTH

EL.P

EL.G

EL.B

PERC

1 & 2

[ca 35']

NB: DURING THE TRUMPET SOLO; A SLOW
 CRESCENDO IN ALL INSTRUMENTS
 REACHING FULL LOUDNESS IN
 BAR **354** [INSTRUCT VERBALLY]

354
SOLO

30-60"

Handwritten musical score for various instruments:

- TR**: G MAJOR
- S.S.**: SOLO G MAJOR
- C.v.**: SOLO G MAJOR
- TR**: SOLO G MAJOR
- SYNTH**: [Staff with notes]
- EL.P**: G MAJOR
- EL.G**: SOLO G MAJOR
- EL.B**: SOLO G MAJOR
- 1**: SOLO AD LIB
- PERC.**: SOLO AD LIB

EPILOGUE

355 TUTTI PERCUSSION AD LIB [SIMILAR TO INTRO]

ca 2 MINUTES.

FROM FF → PP → MORENDO.

THE END

DURATION: CA 38 MINUTES

31/1-1983

U. Rypdal.