

# Rune Rebne

*En-re*

for

solo fiolin og orkester



*Skrevet til Guro Kleven Hagen  
Bestilt og finansiert av Musikk i Innlandet*

# Instrumentarium

Flute 1 & 2

Oboe 1& 2

Clarinet in Bb 1 & 2

Bassoon 1 & 2

Horn in F 1 - 4

Trumpet in Bb 1 & 2

Trombone 1 & 2

Tuba

Snare drum

Timpani

Solo Violin

Violin 1 & 2

Viola

Cello

Double Bass (normal octav transposition)

Durata ca. 5'30''

# En-re

Rune Rebne

Score

♩ = 112

Flute 1&2

Oboe 1&2

Clarinet in B $\flat$  1&2

Bassoon 1&2

Horn in F 1&3

Horn in F 2&4

Trumpet in B $\flat$  1&2

Trombone 1&2

Tuba

Snare Drum

Timpani

Solo Violin

Violin I

Violin II

Viola

Cello

Double Bass

*Watermark: NB noter, This music is copyright protected*

En-re

13

Fl. 1&2

Ob. 1&2

B♭ Cl. 1&2

Bsn. 1&2

Hn. 1&3

Hn. 2&4

B♭ Tpt. 1&2

Tbn. 1&2

Tuba

S.Dr.

Timp.

13

Solilo Vln.

Vln. I

Vln. II

Vla.

Vc.

D.B.

*p*

*f*

*a2*

**A**

**A**

*This music is copyright protected*

En-re

26

rit. -----

**B**

*a tempo*

Fl. 1&2

Ob. 1&2

B♭ Cl. 1&2

Bsn. 1&2

Hn. 1&3

Hn. 2&4

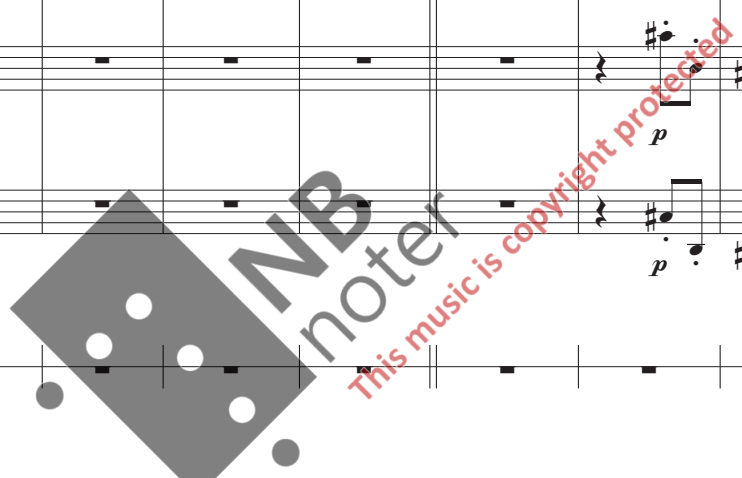
B♭ Tpt. 1&2

Tbn. 1&2

Tuba

S.Dr.

Timp.



26

rit. -----

**B**

*a tempo*

Sollo Vln.

Vln. I

Vln. II

Vla.

Vc.

D.B.

En-re

38

Fl. 1&2 *p*

Ob. 1&2 *mf* a2

B♭ Cl. 1&2 *p*

Bsn. 1&2 *mf* a2

Hn. 1&3 *mf* a2

Hn. 2&4 *mf* a2

B♭ Tpt. 1&2 *mf* *f*

Tbn. 1&2 *mf*

Tuba *mf* *f*

S.Dr. *mf*

Timp.

38

Sollo Vln. *f*

Vln. I *f*

Vln. II *f*

Vla.

Vc.

D.B.

En-re

C

Fl. 1&2

Ob. 1&2

B♭ Cl. 1&2

Bsn. 1&2

Hn. 1&3

Hn. 2&4

B♭ Tpt. 1&2

Tbn. 1&2

Tuba

S.Dr.

Timp.

*p*

*f*

*f*

*p*

*a2*

*p*

*p*

*mf*

*p*

*p*

C

Solilo Vln.

Vln. I

Vln. II

Vla.

Vc.

D.B.

*f*

*p*

*f*

*p*

*f*

*p*

En-re

63 **D**

Fl. 1&2 *mf* 1. *tr* a2

Ob. 1&2 a2 *mf*

B♭ Cl. 1&2 *mf* 1. *tr* *mf*

Bsn. 1&2 *mf* a2

Hn. 1&3 1. *p* *mf* a2

Hn. 2&4 2. *p* *mf* a2

B♭ Tpt. 1&2 1. *p* *mf* 1. *tr*

Tbn. 1&2 1. *p*

Tuba *p*

S.Dr. *mf*

Timp. *p*

63 **D**

Solilo Vln.


Vln. I *p*

Vln. II *p*

Vla. *p*

Vc.

D.B.





En-re

72 E

Fl. 1&2

Ob. 1&2

B♭ Cl. 1&2

Bsn. 1&2

Hn. 1&3

Hn. 2&4

B♭ Tpt. 1&2

Tbn. 1&2

Tuba

S.Dr.

Timp.

*This music is copyright protected*

72 E

Sollos Vln.

Vln. I

Vln. II

Vla.

Vc.

D.B.

horns

*f*

*p*

En-re

82

Fl. 1&2

Ob. 1&2

B♭ Cl. 1&2

Bsn. 1&2

Hn. 1&3

Hn. 2&4

B♭ Tpt. 1&2

Tbn. 1&2

Tuba

S.Dr.

Timp.

82

Solilo Vln.

Vln. I

Vln. II

Vla.

Vc.

D.B.

En-re

91

F

Fl. 1&2

Ob. 1&2

B♭ Cl. 1&2

Bsn. 1&2

Hn. 1&3

Hn. 2&4

B♭ Tpt. 1&2

Tbn. 1&2

Tuba

S.Dr.

Timp.

91

F

Solilo Vln.

Vln. I

Vln. II

Vla.

Vc.

D.B.

En-re

101

Fl. 1&2

Ob. 1&2

B♭ Cl. 1&2

Bsn. 1&2

Hn. 1&3

Hn. 2&4

B♭ Tpt. 1&2

Tbn. 1&2

Tuba

S.Dr.

Timp.

101

Solilo Vln.

Vln. I

Vln. II

Vla.

Vc.

D.B.

En-re

Musical score for the section "En-re", measures 111 to 116. The score includes parts for the following instruments:

- Fl. 1&2: Measures 111-112 are silent. Measures 113-114 have a *mf* dynamic with *tr* and *mf* markings. Measure 115 has a *p* dynamic. Measure 116 has a *p* dynamic.
- Ob. 1&2: Measures 111-112 have a *mf* dynamic. Measures 113-114 are silent. Measure 115 has a *p* dynamic. Measure 116 has a *p* dynamic.
- B♭ Cl. 1&2: Measures 111-112 are silent. Measures 113-114 have a *mf* dynamic with a first ending bracket labeled "1.". Measures 115-116 have a *p* dynamic.
- Bsn. 1&2: Measures 111-112 are silent. Measures 113-114 are silent. Measures 115-116 have a *p* dynamic.
- Hn. 1&3: Measures 111-114 are silent. Measures 115-116 have a *mf* dynamic.
- Hn. 2&4: Measures 111-114 are silent. Measures 115-116 have a *mf* dynamic.
- B♭ Tpt. 1&2: Measures 111-112 are silent. Measures 113-114 have a *mf* dynamic. Measures 115-116 are silent.
- Tbn. 1&2: Measures 111-112 are silent. Measures 113-114 have a *mf* dynamic. Measures 115-116 are silent.
- Tuba: Measures 111-112 are silent. Measures 113-114 have a *mf* dynamic. Measures 115-116 are silent.
- S.Dr.: Measures 111-112 are silent. Measures 113-114 have a *mf* dynamic. Measures 115-116 have a *p* dynamic.
- Timp.: Measures 111-116 are silent.
- Sollos Vln.: Measures 111-112 have a *mf* dynamic with a triplet of eighth notes. Measures 113-114 have a *mf* dynamic with *tr* markings. Measure 115 has a *p* dynamic with a crescendo hairpin. Measure 116 has a *mf* dynamic.
- Vln. I: Measures 111-115 are silent. Measure 116 has a *p* dynamic.
- Vln. II: Measures 111-115 are silent. Measure 116 has a *p* dynamic.
- Vla.: Measures 111-116 are silent.
- Vc.: Measures 111-116 are silent.
- D.B.: Measures 111-116 are silent.

En-re

120

Fl. 1&2

Ob. 1&2

B♭ Cl. 1&2

Bsn. 1&2

Hn. 1&3

Hn. 2&4

B♭ Tpt. 1&2

Tbn. 1&2

Tuba

S.Dr.

Timp.

*mf*

*p*

*mf*

*p*

*mf*

*mf*

*p*

*p*

*p*

*p*

*p*

120

Solilo Vln.

Vln. I

Vln. II

Vla.

Vc.

D.B.

*p*

*p*

*p*

En-re

130 H

Fl. 1&2 *f* *a2* *mf* *tr*

Ob. 1&2 *f* *a2* *mf* *tr*

B♭ Cl. 1&2 *f*

Bsn. 1&2 *f*

Hn. 1&3 *f* *a2* 1. *tr* *mf*

Hn. 2&4 *f* *a2* 2. *tr* *mf*

B♭ Tpt. 1&2 *f* *a2*

Tbn. 1&2 *f* *a2*

Tuba *f* *mf*

S.Dr.

Timp. *mf*

130 H

Solilo Vln. 3

Vln. I *f*

Vln. II *f*

Vla. *f*

Vc. *f*

D.B. *f*

En-re

140 I

Fl. 1&2 *p*

Ob. 1&2 *a2* *p*

B♭ Cl. 1&2 *mf* *p*

Bsn. 1&2 *mf* *p*

Hn. 1&3

Hn. 2&4

B♭ Tpt. 1&2

Tbn. 1&2

Tuba

S.Dr.

Timp.

140 I

Sollos Vln. *f*

Vln. I *mf*

Vln. II *mf*

Vla. *mf*

Vc. *mf*

D.B. *mf*



En-re

150

J

Fl. 1&2

Ob. 1&2

B♭ Cl. 1&2

Bsn. 1&2

Hn. 1&3

Hn. 2&4

B♭ Tpt. 1&2

Tbn. 1&2

Tuba

S.Dr.

Timp.

150

J

Sollo Vln.

Vln. I

Vln. II

Vla.

Vc.

D.B.

En-re

160

K

Fl. 1&2

Ob. 1&2

B♭ Cl. 1&2

Bsn. 1&2

Hn. 1&3

Hn. 2&4

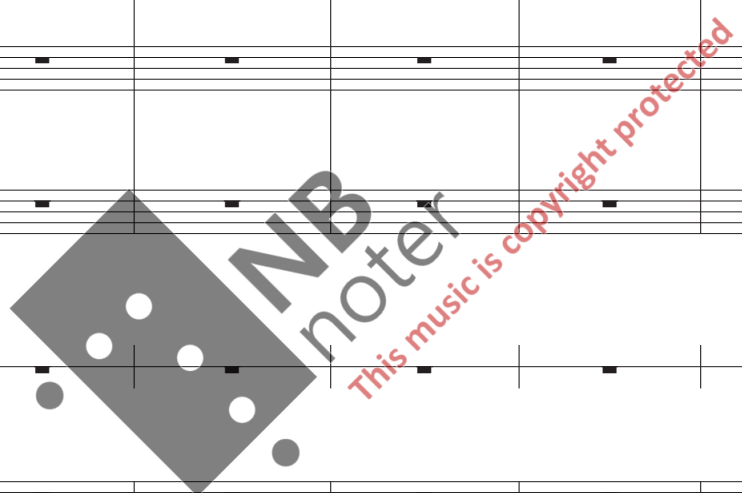
B♭ Tpt. 1&2

Tbn. 1&2

Tuba

S.Dr.

Timp.



160

K

Sollo Vln.

Vln. I

Vln. II

Vla.

Vc.

D.B.

En-re

170

Fl. 1&2

Ob. 1&2

B♭ Cl. 1&2

Bsn. 1&2

Hn. 1&3

Hn. 2&4

B♭ Tpt. 1&2

Tbn. 1&2

Tuba

S.Dr.

Timp.

170

Solilo Vln.

Vln. I

Vln. II

Vla.

Vc.

D.B.

En-re

181

L

Fl. 1&2

Ob. 1&2

B♭ Cl. 1&2

Bsn. 1&2

Hn. 1&3  
a2  
*p*

Hn. 2&4  
a2  
*p*

B♭ Tpt. 1&2  
a2  
*p* *mf*

Tbn. 1&2  
a2  
*p* *mf*

Tuba  
*p*

S.Dr.

Timp.

181

L

Solilo Vln.

Vln. I  
*f*

Vln. II  
*f*

Vla.  
*f*

Vc.  
*f*

D.B.  
*f*

En-re

192

Fl. 1&2

Ob. 1&2

B♭ Cl. 1&2

Bsn. 1&2

Hn. 1&3

Hn. 2&4

B♭ Tpt. 1&2

Tbn. 1&2

Tuba

S.Dr.

Timp.

*p*

*mf*

*a2*

*p*

*mf*

*a2*

*p*

*mf*

*a2*

*p*

*mf*

*p*

*mf*

*p*

192

Solilo Vln.

Vln. I

Vln. II

Vla.

Vc.

D.B.

vln 1

*f*

*f*

*mf*

*p*

*f*

*mf*

*p*

*f*

*mf*

*p*

*f*

*mf*

*p*

En-re

205

rit.

Fl. 1&2

Ob. 1&2

B♭ Cl. 1&2

Bsn. 1&2

Hn. 1&3

Hn. 2&4

B♭ Tpt. 1&2

Tbn. 1&2

Tuba

S.Dr.

Timp.

205

rit.

Sollo Vln.

Vln. I

Vln. II

Vla.

Vc.

D.B.