

Jon Øivind Ness

Nordlys

for solo piano

skrevet til
Andreas Gundersen



Nordlys

Jon Øivind Ness
(2024)

accel.
♩ = 30

Piano

ppp

ppp

Red

5

Pno.

pp

pp

Red

8

Pno.

pp

Red

10

Pno.

Red

12

Pno.

Red

14 Pno. 3 3 3 3 3 3 3 3

16 Pno. 3 3 3 3 3 3 3 3

18 Pno. 3 3 3 3 5 5 3 3 3 3 3 3

Red
rit.
♩ = 50

21 Pno. **ff** **ff** *Red*

22 Pno. *Red*

23 Pno. *Red*

Pno.

pp

pp

Red.

This system contains measures 24 and 25. Measure 24 begins with a treble clef, a key signature of one sharp (F#), and a piano (*pp*) dynamic. The right hand features a complex, multi-voice texture with many beamed notes. The left hand has a simpler accompaniment. Measure 25 continues with a key signature change to one flat (Bb) and a *pp* dynamic. The right hand continues with complex textures, while the left hand remains accompanimental. A 'Red.' marking is at the end of the system.

Pno.

Red.

This system contains measures 25 and 26. Measure 25 continues from the previous system with a key signature of one flat (Bb) and a *pp* dynamic. Measure 26 begins with a *ff* dynamic. The right hand has a complex texture, and the left hand has a steady accompaniment. A 'Red.' marking is at the end of the system.

Pno.

ff

ff

Red.

This system contains measures 26 and 27. Measure 26 continues with a *ff* dynamic. Measure 27 begins with a key signature change to two flats (Bb, Eb) and a *ff* dynamic. The right hand has a complex texture, and the left hand has a steady accompaniment. A 'Red.' marking is at the end of the system.

Pno.

Red.

This system contains measures 27 and 28. Measure 27 continues with a key signature of two flats (Bb, Eb) and a *ff* dynamic. Measure 28 begins with a *ff* dynamic. The right hand has a complex texture, and the left hand has a steady accompaniment. A 'Red.' marking is at the end of the system.

Pno.

6

6

6

6

Red.

This system contains measures 28 and 29. Measure 28 continues with a *ff* dynamic. Measure 29 begins with a *ff* dynamic. The right hand has a complex texture, and the left hand has a steady accompaniment. A 'Red.' marking is at the end of the system.

Pno.

6

6

6

6

Red.

This system contains measures 29 and 30. Measure 29 continues with a *ff* dynamic. Measure 30 begins with a *ff* dynamic. The right hand has a complex texture, and the left hand has a steady accompaniment. A 'Red.' marking is at the end of the system.

Pno.

Measures 30-31: Treble clef contains sixteenth-note runs with sixths (6) and trills. Bass clef contains sixteenth-note runs with sixths (6). Dynamics: *pp*. Pedal: *ped.*

Pno.

Measures 31-32: Treble clef contains eighth-note chords with triplets (3). Bass clef contains sixteenth-note runs with triplets (3). Dynamics: *ppp* in treble, *pp* in bass. Pedal: *ped.*

Pno.

Measures 32-33: Treble clef contains eighth-note chords with triplets (3). Bass clef contains sixteenth-note runs with triplets (3). Pedal: *ped.*

Pno.

Measures 33-34: Treble clef contains eighth-note chords with triplets (3). Bass clef contains sixteenth-note runs with triplets (3). Pedal: *ped.*

Pno.

Measures 34-35: Treble clef contains eighth-note chords with triplets (3). Bass clef contains sixteenth-note runs with triplets (3). Pedal: *ped.*

Pno.

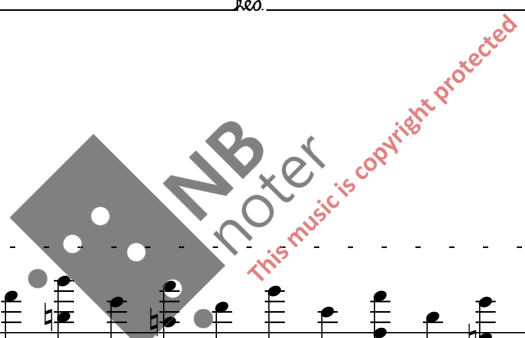
Measures 35-36: Treble clef contains eighth-note chords. Bass clef contains sixteenth-note runs with quintuplets (5). Pedal: *ped.*

Piano score for measures 36-37. The system consists of two staves. The right hand (treble clef) features a sequence of eighth notes with sharp and natural accidentals, followed by a triplet of eighth notes. The left hand (bass clef) features a sequence of eighth notes with flat and sharp accidentals, followed by a triplet of eighth notes. The word "Ped." is written below the left staff at the beginning and end of the system.

Piano score for measures 38-39. The system consists of two staves. Above the first measure, the tempo marking "accel." and a quarter note with "= 34" are present. The right hand (treble clef) features a sequence of eighth notes with sharp and natural accidentals, followed by a triplet of eighth notes and then a quintuplet of eighth notes. The left hand (bass clef) features a sequence of eighth notes with flat and sharp accidentals, followed by a quintuplet of eighth notes. The word "Ped." is written below the left staff at the beginning and end of the system.

Piano score for measures 40-41. The system consists of two staves. The right hand (treble clef) features a sequence of eighth notes with sharp and natural accidentals, followed by a triplet of eighth notes. The left hand (bass clef) features a sequence of eighth notes with flat and sharp accidentals, followed by a triplet of eighth notes. The word "Ped." is written below the left staff at the beginning and end of the system.

Piano score for measures 41-42. The system consists of two staves. The right hand (treble clef) features a sequence of eighth notes with sharp and natural accidentals, followed by a triplet of eighth notes. The left hand (bass clef) features a sequence of eighth notes with flat and sharp accidentals, followed by a triplet of eighth notes. The dynamic marking "ff" is written at the beginning of the system. The word "Ped." is written below the left staff at the beginning and end of the system.



Piano score for measures 42-43. The system consists of two staves. Measure 42 features a complex texture with many beamed notes in the right hand and chords in the left hand. Measure 43 continues with similar textures. A *Red.* marking is present below the first staff.

Piano score for measures 43-44. Measure 43 contains several triplet markings (indicated by a '3' below the notes) in both hands. Measure 44 continues the triplet patterns. A *Red.* marking is present below the first staff.

Piano score for measures 44-45. Measure 44 includes a *rit.* marking and a tempo indication of $\text{♩} = 37$. The dynamic marking *ppp* is present in both hands. Measure 45 continues the piece. A *Red.* marking is present below the first staff.

Piano score for measures 46-47. Measure 46 features a melodic line in the right hand and a bass line in the left hand. Measure 47 includes triplet markings in the right hand. A *Red.* marking is present below the first staff.

Piano score for measures 48-49. Measure 48 includes a tempo indication of $\text{♩} = 30$. Measure 49 features a long, sustained chord in the right hand and a melodic line in the left hand. A *Red.* marking is present below the first staff.