

Jon Øivind Ness



skrevet til Ensemble
Koryphae

med støtte fra TONO

Transponert partitur

Lÿjask

Jon Øivind Ness

♩ = 60

Soprano Saxophone
in Bb

Musical staff for Soprano Saxophone in Bb. It features a treble clef and a key signature of two flats. The notation includes a half note on Bb, a whole note on C, and a half note on Bb, with dynamics *ppp* and *p*. A slur covers the first two notes, and another slur covers the last two notes.

Vibraphone

Musical staff for Vibraphone, showing a bass clef and a whole rest for the duration of the piece.

Guitar,
notation

Musical staff for Guitar notation, showing a treble clef and a whole rest for the duration of the piece.

Guitar,
sounding

Musical staff for Guitar sounding, showing a treble clef and a whole rest for the duration of the piece.

♩ = 60

Vla

Musical staff for Viola, showing a C-clef and a key signature of two flats. The notation includes a half note on Bb, a whole note on C, and a half note on Bb, with dynamics *ppp* and *p*. A slur covers the first two notes, and another slur covers the last two notes.

Vlc

Musical staff for Violoncello, showing a bass clef and a key signature of two flats. The notation includes a half note on Bb, a whole note on C, and a half note on Bb, with dynamics *ppp* and *p*. A slur covers the first two notes, and another slur covers the last two notes.

5

molto vib

Sop. Sax.

Musical staff for Soprano Saxophone starting at measure 5. It features a treble clef and a key signature of two flats. The notation includes a half note on Bb, a whole note on C, and a half note on Bb, with dynamics *ppp* and *p*. A slur covers the first two notes, and another slur covers the last two notes. The word *ord.* is written above the final note.

Vib.

Musical staff for Vibraphone starting at measure 5, showing a bass clef and a whole rest for the duration of the piece.

Gtr.

Musical staff for Guitar notation starting at measure 5, showing a treble clef and a whole rest for the duration of the piece.

Gtr.

Musical staff for Guitar sounding starting at measure 5, showing a treble clef and a whole rest for the duration of the piece.

Vla.

molto vib

Musical staff for Viola starting at measure 5, showing a C-clef and a key signature of two flats. The notation includes a half note on Bb, a whole note on C, and a half note on Bb, with dynamics *ppp* and *p*. A slur covers the first two notes, and another slur covers the last two notes. The word *ord.* is written above the final note.

Vc.

molto vib

Musical staff for Violoncello starting at measure 5, showing a bass clef and a key signature of two flats. The notation includes a half note on Bb, a whole note on C, and a half note on Bb, with dynamics *ppp* and *p*. A slur covers the first two notes, and another slur covers the last two notes.

10

Sop. Sax. *p* *ppp* *p* *ppp* *p* *ppp* *p*

Vib.

Gtr.

Gtr.

Vla. *p* *ppp* *p* *ppp* *p* *ppp* *p*

Vc. *ord.* *ppp* *p* *ppp* *p* *ppp* *p* *ppp* *p*

17 *molto vib*

Sop. Sax. *ppp* *p* *ord.* *ppp* *mf* *ppp* *mf*

Vib. *f*

Gtr. *f*

Gtr. *f*

Vla. *molto vib* *ppp* *p* *A* *ord.* *ppp* *mf* *ppp* *mf*

Vc. *molto vib* *ppp* *p* *ord.* *ppp* *mf* *ppp*

24

Sop. Sax.

ppp < f ppp < mf ppp < mf

Vib.

Gtr.

Gtr.

Vla.

ppp < f ppp < mf ppp

Vc.

mf < ppp < f ppp < mf ppp



31

Sop. Sax.

ppp ppp < mf

Vib.

p 3 3 f

Gtr.

p f l.v. 3 3

Gtr.

p f l.v. 3 3

Vla.

mf ppp ppp < mf

Vc.

mf ppp ppp

36

Sop. Sax.

Vib.

Gtr.

Gtr.

Vla.

Vc.

ppp *mf* *ppp* *mf* *ppp* *mf*

ppp *mf* *ppp* *ppp* *mf* *ppp* *ppp*

mf *ppp* *mf* *ppp* *mf* *ppp* *ppp*

42

Sop. Sax.

Vib.

Gtr.

Gtr.

Vla.

Vc.

ppp *mf* *ppp* *mf* *ppp*

mf *ppp* *mf* *ppp* *mf*

mf *ppp* *mf* *ppp* *mf*



48 B

Sop. Sax. *ppp* *mp*

Vib. *f*

Gtr. *f*

Gtr. *f*

Vla. *ppp* *mp*

Vc. *ppp* *mp*

52

Sop. Sax. *ppp* *ppp* *f* *ppp*

Vib.

Gtr.

Gtr.

Vla. *ppp* *ppp* *f* *ppp*

Vc. *ppp* *ppp* *f*

57

Sop. Sax. *mf* *ppp* *mf* *ppp* *ppp*

Vib. *f*

Gtr. *mf*

Gtr.

Vla. *mf* *ppp* *mf* *ppp*

Vc. *ppp* *mf* *ppp* *mf* *ppp*

63

Sop. Sax. *mf* *pp* *ppp*

Vib.

Gtr.

Gtr.

Vla. *mf* *pp* *ppp*

Vc. *mf* *pp* *ppp*

67 C

Sop. Sax. *f* *ppp* *mf*

Vib. *f* *mp* *f*

Gtr. *p* *f*

Gtr. *p* *f*

Vla. *f* *ppp* *mf*

Vc. *f* *ppp* *mf*

71

Sop. Sax. *pp* *ppp*

Vib. *pp* *ppp*

Gtr. *pp* *ppp*

Gtr. *pp* *ppp*

Vla. *pp* *ppp*

Vc. *pp* *ppp*

D

75

Sop. Sax. *f* *pp* *f*

Vib. *f* *mp* *f*

Gtr. *p* *f*

Gtr. *p* *f*

Vla. *f* *f* *pp* *f*

Vc. *f* *f* *pp* *f*

pizz. *arco*

pizz. *arco*

E

79

Sop. Sax. *pp* *f*

Vib. *f*

Gtr. *f*

Gtr. *f*

Vla. *pp* *f*

Vc. *pp* *f*

Sop. Sax. *ppp*

Vib. *p* 3 3 3 3 3 3 3 3 3 3 3 3

Gtr. *p* *l.v. sempre* 3 3 3 3 3 3 3 3 3 3 3 3

Gtr. *p* *l.v. sempre* 3 3 3 3 3 3 3 3 3 3 3 3

Vla. *ppp*

Vc.



Sop. Sax. *mf* *ppp* *mf*

Vib. 3 3 3 3 3 3 3 3 3 3 3 3

Gtr. 3 3 3 3 3 3 3 3 3 3 3 3

Gtr. 3 3 3 3 3 3 3 3 3 3 3 3

Vla. *mf* *ppp* *mf*

Vc. *ppp* *mf* *ppp*

90

Sop. Sax.

Vib.

Gtr.

Gtr.

Vla.

Vc.

ppp *mf* *ppp* *mf*

mf *ppp* *mf* *ppp*

93

Sop. Sax.

Vib.

Gtr.

Gtr.

Vla.

Vc.

ppp

F

mf *ppp*

f pizz.

f pizz.

f

96
Sop. Sax.
Vib.
Gtr.
Gtr.
Vla.
Vc.

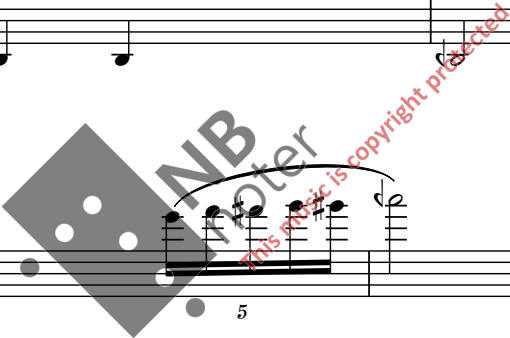
ppp 5 5 *p*

Detailed description: This system of music covers measures 96 and 97. The Soprano Saxophone part (Sop. Sax.) features a melodic line starting in measure 96 with a *ppp* dynamic and a five-fingered run. It continues in measure 97 with a *p* dynamic and a triplet. The Vibraphone (Vib.) part consists of a steady eighth-note triplet pattern in both measures. The two Guitar (Gtr.) parts play a similar eighth-note triplet pattern. The Viola (Vla.) and Violoncello (Vc.) parts provide a simple harmonic accompaniment with quarter notes.

98
Sop. Sax.
Vib.
Gtr.
Gtr.
Vla.
Vc.

3 5

Detailed description: This system of music covers measures 98 and 99. The Soprano Saxophone part (Sop. Sax.) begins in measure 98 with a triplet and continues in measure 99 with a five-fingered run. The Vibraphone (Vib.) part maintains its eighth-note triplet pattern. The two Guitar (Gtr.) parts continue with their eighth-note triplet accompaniment. The Viola (Vla.) and Violoncello (Vc.) parts continue with their quarter-note accompaniment.



100

Sop. Sax.

Vib.

Gtr.

Gtr.

Vla.

Vc.

ppp *f*

103

Sop. Sax.

Vib.

Gtr.

Gtr.

Vla.

Vc.

ppp *ppp*

105

Sop. Sax. *p* *f*

Vib.

Gtr.

Gtr.

Vla.

Vc.

107

Sop. Sax. *ppp* *ppp*

Vib.

Gtr.

Gtr.

Vla.

Vc.

NB noter
This music is copyright protected

109

Sop. Sax. *p* *f* *ppp*

Vib.

Gtr.

Gtr.

Vla.

Vc.

112

Sop. Sax. *pp* *mf* *ppp* *mf*

Vib. *f*

Gtr. 2 1

Gtr. *G* arco

Vla. *ppp* *mf* *ppp* *ppp*

Vc. *pp* *f* *pp* *pp*

116

Sop. Sax. *ppp* *mf* *ppp*

Vib.

Gtr.

Gtr.

Vla. *mf* *ppp* *ppp* *mf* *ppp* *ppp* *mf* *ppp* *ppp*

Vc. *f* *pp* *pp* *f* *pp* *pp* *f* *pp* *pp*

122

Sop. Sax. *ppp* *mp* *ppp* *ppp*

Vib. *pp* *mf*

Gtr. *pp* *mf*

Gtr. *pp* *mf*

Vla. *mf* *ppp* *ppp* *mf* *ppp* *pp* *arco* *mf*

Vc. *f* *pp* *pp* *f* *pp* *pp*

127

Sop. Sax. *mp* *ppp* *ppp* *mp*

Vib. *pp* *mf*

Gtr. *pp* *mf* *pp*

Gtr. *pp* *mf* *pp*

Vla. arco 3 *pp* *mf* *pp* *mf*

Vc. *mf* *pp* *mf* *pp*

132

Sop. Sax. *ppp* *ppp* *p*

Vib. *pp* *mf* *pp*

Gtr. *mf* *pp*

Gtr. *mf* *pp*

Vla. arco 3 *pp* *mf* *pp*

Vc. *mf* *pp* *mf*

136

Sop. Sax. *ppp* *ppp* *p*

Vib. *mf* *pp*

Gtr. *mf* *pp* *mf*

Gtr. *mf* *pp* *mf*

Vla. *mf* *pp* *mf*

Vc. *pp* *mf* *pp* *mf*

140

Sop. Sax. *> ppp* *ppp* *p*

Vib. *mf* *pp*

Gtr. *pp* *mf*

Gtr. *pp* *mf*

Vla. *pp* *mf* *pp* *mf*

Vc. *pp* *mf* *pp*

144

Sop. Sax. *ppp* *mp*

Vib. *mf* *pp* *mf*

Gtr. *pp* *mf* *pp*

Gtr. *pp* *mf* *pp*

Vla. *pp* *mf* *pp* *mf*

Vc. *mf* *pp* *mf* *pp*

arco

3

149

Sop. Sax. *ppp*

Vib. *pp* *mf* *pp*

Gtr. *mf* *mf*

Gtr. *mf* *mf*

Vla. *pp* *mp* *pp*

Vc. *mf* *pp*

Sempre sim.

XII V V

I

$\text{♩} = 62$ $\text{♩} = 64$

Tempo markings: ♩ = 66, ♩ = 68

153

Sop. Sax. *pp* *mf* *pp*

Vib. *mf*

Gtr.

Gtr.

Tempo markings: ♩ = 66, ♩ = 68

Vla. *pp* *mf*

Vc. *pp* *mf*

Tempo markings: ♩ = 70, ♩ = 72

155

Sop. Sax. *mf* *pp*

Vib.

Gtr.

Gtr.

Tempo markings: ♩ = 70, ♩ = 72

Vla. *pp*

Vc. *pp* *mf*

Tempo markings: ♩ = 74, ♩ = 76

157

Sop. Sax. *mf* *pp*

Vib.

Gtr.

Gtr.

Vla. *mf* *pp*

Vc. *pp* *mf*

Tempo markings: ♩ = 78, ♩ = 80

159

Sop. Sax. *mf* *pp* *mf*

Vib.

Gtr.

Gtr.

Vla. *mf*

Vc. *pp* *mf*

♩ = 82

♩ = 84

161

Sop. Sax. *pp* *mf*

Vib.

Gtr.

Gtr.

Vla. *pp* *mf*

Vc. *pp* *mf*

♩ = 82

♩ = 84

163

Sop. Sax. *pp* *mf*

Vib.

Gtr.

Gtr.

Vla. *pp* *mf*

Vc. *pp* *mf*

♩ = 86

♩ = 88

♩ = 86

♩ = 88

♩ = 90 ♩ = 92

165

Sop. Sax. *pp* *mf*

Vib.

Gtr.

Gtr.

♩ = 90 ♩ = 92

Vla.

Vc. *pp* *mf*

♩ = 94 ♩ = 96

167

Sop. Sax. *ppp* *mp* *ppp* *ppp*

Vib.

Gtr.

Gtr.

♩ = 94 ♩ = 96

Vla.

Vc. *pp* *mf*

169

Sop. Sax. $\text{♩} = 98$ $\text{♩} = 100$

Vib.

Gtr.

Gtr.

Vla. $\text{♩} = 98$ $\text{♩} = 100$

Vc. $\text{♩} = 98$ $\text{♩} = 100$

mf *pp*

pp *mf*

171

Sop. Sax. $\text{♩} = 102$ $\text{♩} = 104$

Vib.

Gtr.

Gtr.

Vla. $\text{♩} = 102$ $\text{♩} = 104$

Vc. $\text{♩} = 102$ $\text{♩} = 104$

mf *pp*

pp *mf*



♩ = 106 ♩ = 108

173

Sop. Sax. *mf* *pp* *mf*

Vib.

Gtr.

Gtr.

Vla. *pp* *mf*

Vc. *pp* *mf*

♩ = 106 ♩ = 108

♩ = 110 ♩ = 112

175

Sop. Sax. *pp* *mf* *pp*

Vib.

Gtr.


Gtr.

Vla. *pp* *pp* *mf* *pp*

Vc. *pp* *mf* *pp*

178 Tuning of the guitar:

Gtr.



The image shows a musical staff for guitar with a treble clef. It contains six whole notes, each with a horizontal line above it, representing the standard tuning of a guitar: E2, A2, D3, G3, B3, and E4.

