

Jon Øivind Ness

Crop



Crop

Jon Øivind Ness

♩ = 60

Flute
To Cl. Clarinet in B \flat

Bongos

♩ = 60

Violin
Violin
Viola
Violoncello

Fl.
Cl.

Bongos

Pno.

Vln.

Vln.

Vla.

Vc.

9

Fl.

Cl.

Bongos

Pno.

Vln.

Vln.

Vla.

Vc.

mp

mp

14

Fl.

Cl.

Bongos

Pno.

Vln.

Vln.

Vla.

Vc.

mp

mp

30

Fl. *f*

Cl.

Bongos *f* 3 3 3 3

Pno. *p*

Vln. *f* 5 5

Vln. *f* 5 5 *pp*

Vla. *f* 3 3 3 3

Vc. *f* 5 5

35

Fl. *f*

Cl. *f*

Bongos *8va*

Pno. *f* 3 3 3 3

Vln. *pp* *p*

Vln. *pp* 5 5

Vla. *f* 5 5

Vc. *f*

MB noter
This music is copyright protected

39

Fl.

Cl.

f

f

Bongos

(8)

Pno.

f

f

Vln.

Vln.

Vla.

Vc.

f

f

f

f



42

Fl.

Cl.

f

f

Bongos

(8)

Pno.

f

f

Vln.

Vln.

Vla.

Vc.

f

f

f

f

45

Fl. *f*

Cl. *f*

Bongos

Pno. *f*

Vln. *f*

Vla. *f*

Vc. *f*

48

Fl. *f*

Cl. *f*

Bongos

Pno. *f*

Vln. *f*

Vla. *f*

Vc. *f*

51 (8)

Fl.

Cl.

Bongos

Pno.

Vln.

Vln.

Vla.

Vc.

54 (8)

Fl.

Cl.

Bongos

Pno.

Vln.

Vln.

Vla.

Vc.

57 (8)

Fl. *f*

Cl. *f*

Bongos

Pno. *f*

Vln. *f*

Vla. *f*

Vc. *f*

60 (8)

Fl. *f*

Cl. *f*

Bongos

Pno. *f*

Marimba

Vln. *f*

Vla. *f*

Vc. *f*

63

Fl. *f* *f*

Cl. *f* *f*

Mar. *f* *f* *f*

Pno. *f* *f* *f*

Vln. *f* *f* *f*

Vla. *f* *f* *f*

Vc. *f*

Detailed description: This block contains the musical score for measures 63, 64, and 65. It features seven staves: Flute (Fl.), Clarinet (Cl.), Maracas (Mar.), Piano (Pno.), Violin (Vln.), Viola (Vla.), and Violoncello (Vc.). The Flute and Clarinet parts play a rhythmic eighth-note pattern with accents. The Maracas part consists of a steady eighth-note accompaniment. The Piano part features a complex texture with triplets and sixteenth notes. The Violin and Viola parts play a similar eighth-note pattern with accents. The Violoncello part provides a bass line with eighth notes. Dynamics are marked as *f* (forte) throughout.



66

Fl. *f* *f*

Cl. *f* *f*

Mar. *f* *f* *f*

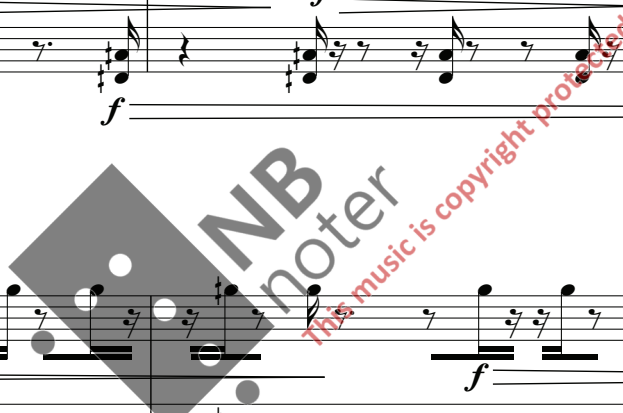
Pno. *f* *f* *f*

Vln. *f* *f* *f*

Vla. *f* *f* *f*

Vc. *f*

Detailed description: This block contains the musical score for measures 66, 67, and 68. It features the same seven staves as the previous block. The Flute and Clarinet parts continue with their rhythmic patterns. The Maracas part remains steady. The Piano part continues with its complex texture. The Violin and Viola parts play eighth notes with accents. The Violoncello part provides a bass line. Dynamics are marked as *f* (forte) throughout.



69

Fl. *f*

Cl. *f*

Mar. *f*

Pno. *f*

Vln. *f*

Vln. *f*

Vla. *f*

Vc. *f*

72

Fl. *f*

Cl. *f*

Mar. *f*

Pno. *f*

Vln. *f*

Vln. *f*

Vla. *f*

Vc. *f*

75

Fl.

Cl.

Mar. *To T.-t.*

Pno.

Vln.

Vln. *pp*

Vla.

Vc. *f*

82

Fl.

Cl.

Mar.

Pno.

Vln.

Vln. *pp* *mf*

Vla. *pp* *mf*

Vc. *pp* *mf*

88

Fl. *pp* *mf* *pp*

Cl. *pp* *mf* *pp*

Mar.

Pno. 5 3 3 5 3 5 3

Vln. *pp* *mf* *pp* *pp*

Vln. *pp* *mf* *pp* *pp*

Vla. *pp* *mf* *pp* *pp*

Vc. *pp* *mf* *pp* *pp*

94

Fl. *mf* *pp*

Cl. *mf* *pp*

Mar.

Pno. 5 3 3 5 3

Vln. *mf* *pp*

Vln. *pp*

Vla. *mf* *pp*

Vc. *mf* *pp*

NB noter
This music is copyright protected

Musical score for orchestra, measures 99-104. The score is divided into two systems, with a double bar line between measures 103 and 104. The instruments and their parts are:

- Fl. (Flute):** Measures 99-103: *mf*. Measures 104-108: *mp* (triplets), *pp* (triplets), *pp*.
- Cl. (Clarinet):** Measures 99-103: *mf*. Measures 104-108: *mp* (triplets), *pp* (triplets), *pp*.
- Mar. (Maracas):** Continuous rhythmic accompaniment throughout.
- Pno. (Piano):** Measures 99-103: *mf*. Measures 104-108: *mp* (triplets), *pp* (triplets), *pp*.
- Vln. (Violin):** Measures 99-103: *mf*. Measures 104-108: *mp* (triplets), *pp* (triplets), *pp*.
- Vla. (Viola):** Measures 99-103: *mf*. Measures 104-108: *mp* (triplets), *pp* (triplets), *pp*.
- Vc. (Violoncello):** Measures 99-103: *mf*. Measures 104-108: *mp* (triplets), *pp* (triplets), *pp*.

A watermark is present across the score: "NB noter This music is copyright protected".

120

Fl. *p* *mf* *p* *mf* *p* *mf*

Cl. *p* *mf* *p* *mf* *p* *mf*

Mar.

Pno. 5 3 3 5 3 3 5 3 3 5 3 3

(8)

Vln. *p* *mf* *p* *mf* *p* *mf*

Vln. *p* *mf* *p* *mf* *p* *mf*

Vla. *p* *mf* *p* *mf* *p* *mf*

Vc. *p* *mf* *p* *mf* *p* *mf*

126

Fl. *p* *mf* *p* *mf*

Cl. *p* *mf* *p* *mf*

Mar.

Pno. 5 3 3 5 3 3 5 3 3 5 3 3

(8) ^{8^{vb}}

Vln. *p* *mf* *p* *mf*

Vln. *p* *mf* *p* *mf*

Vla. *p* *mf* *p* *mf*

Vc. *p* *mf* *p* *mf*

NB noter
this music is copyright protected

Fl.

Cl.

Mar.

Pno.

Vln.

Vln.

Vla.

Vc.

Fl.

Cl.

Mar.

Pno.

Vln.

Vln.

Vla.

Vc.



18

150

Fl.

Cl.

T-t.

Pno.

Vln.

Vln.

Vla.

Vc.

152

Fl.

Cl.

T-t.

Pno.

Vln.

Vln.

Vla.

Vc.

f *p* *f* *p*

fff *f* *p* *f*

To T. Bl.

3 5 3 5 3 5 3 5

3 5 3 5 3 5 3 5

3 5 3 5 3 5 3 5

p *f* *p* *f* *p*

3 5 3 5 3 5 3 5

3 5 3 5 3 5 3 5

3 5 3 5 3 5 3 5

p *f* *p*

This music is copyright protected

154

Fl.

Cl.

T.-t.

Pno.

Vln.

Vln.

Vla.

Vc.

f *p* *f* *p* *f*



156

Fl.

Cl.

T.-t.

Pno.

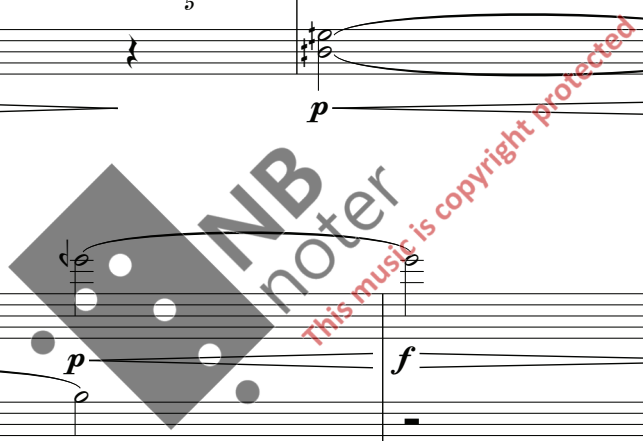
Vln.

Vln.

Vla.

Vc.

p *f* *p* *p* *f* *p*



158

Fl.

Cl.

T.-t.

Pno.

Vln.

Vln.

Vla.

Vc.

f *p* *f* *p*



160

Fl.

Cl.

T.-t.

Pno.

Vln.

Vln.

Vla.

Vc.

f *p* *f* *p*

162

Fl.

Cl.

T.-t.

Pno.

Vln.

Vln.

Vla.

Vc.

p *f*

p *f*



164

Fl.

Cl.

T.-t.

Pno.

Vln.

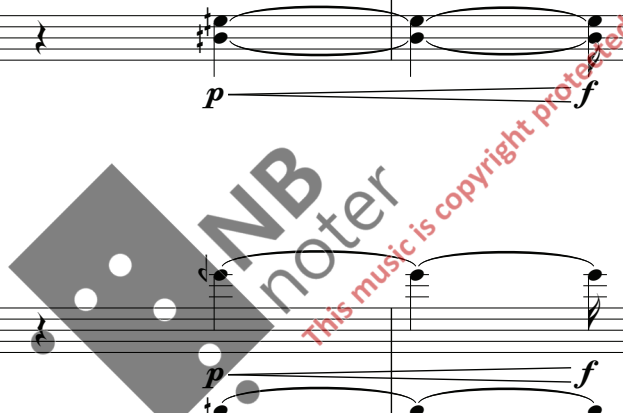
Vln.

Vla.

Vc.

p *f*

p *f*



166

Fl.

Cl.

T.-t.

Pno.

Vln.

Vln.

Vla.

Vc.



168 **poco rit..**

Fl.

Cl.

T.-t.

Pno.

Vln.

Vln.

Vla.

Vc.

poco rit..

170 **poco rit.** **poco rit.**

Fl.

Cl.

T.-t.

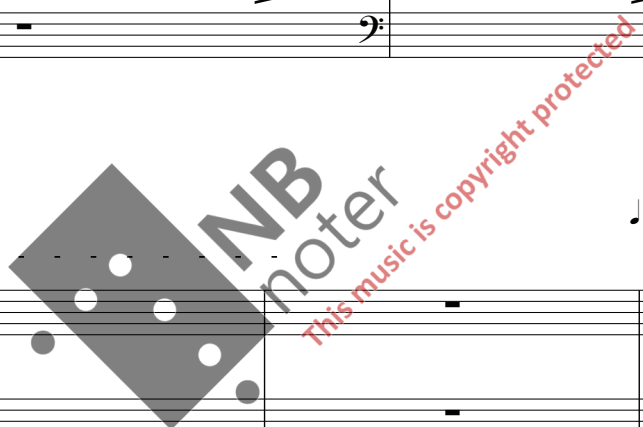
Pno.

Vln.

Vln.

Vla.

Vc.



♩ = 50

172 - **poco rit.**

Fl.

Cl.

Temple Blocks

T. Bl.

Pno.

Vln.

Vln.

Vla.

Vc.

8^{vb} 8^{vb}

♩ = 50

175

Fl.

Cl.

T. Bl.

Pno.

Vln.

Vln.

Vla.

Vc.

pp

pp

(8)

8vb



179

Fl.

Cl.

T. Bl.

Pno.

Vln.

Vln.

Vla.

Vc.

8vb

f



183

Fl.

Cl.

T. Bl.

Pno.

Vln.

Vln.

Vla.

Vc.

(8)

8^{vb}

8^{vb}

8^{vb}

This page contains musical notation for measures 183 through 186. It features staves for Flute, Clarinet, Trombone, Piano, Violin I, Violin II, Viola, and Cello. The piano part includes dynamic markings such as (8) and 8^{vb}. The violin parts feature triplet markings (3 5). The woodwinds and strings play rhythmic patterns with various articulations.



187

Fl.

Cl.

T. Bl.

Pno.

Vln.

Vln.

Vla.

Vc.

8^{vb}

8^{vb}

8^{vb}

This page contains musical notation for measures 187 through 190. It features staves for Flute, Clarinet, Trombone, Piano, Violin I, Violin II, Viola, and Cello. The piano part includes dynamic markings such as 8^{vb}. The violin parts feature triplet markings (3 5). The woodwinds and strings play rhythmic patterns with various articulations.



191

Fl.

Cl.

T. Bl.

Pno.

Vln.

Vln.

Vla.

Vc.

♩ = 60

195

Fl.

Cl.

T. Bl.

Pno.

Vln.

Vln.

Vla.

Vc.

ff

ff

Percussion
To Perc.

f

fff

fff

ff

ff

ff

ff

ff

♩ = 62

197

Fl.

Cl.

Perc.

Pno.

Vln.

Vln.

Vla.

Vc.



NB noter This music is copyright protected

199

Fl.

Cl.

Perc.

Pno.

Vln.

Vln.

Vla.

Vc.

201

Fl.

Cl.

Perc.

Pno.

Vln.

Vln.

Vla.

Vc.



203

Fl.

Cl.

Perc.

Pno.

Vln.

Vln.

Vla.

Vc.

♩ = 66

205

Fl.

Cl.

Perc.

Pno.

Vln.

Vln.

Vla.

Vc.

♩ = 66



♩ = 68

207

Fl.

Cl.

Perc.

Pno.

Vln.

Vln.

Vla.

Vc.

♩ = 68

210

Fl.

Cl.

Perc.

Pno.

Vln.

Vln.

Vla.

Vc.



212

Fl.

Cl.

Perc.

Pno.

Vln.

Vln.

Vla.

Vc.

$\text{♩} = 70$

214

Fl.

Cl.

Perc.

Pno.

Vln.

Vln.

Vla.

Vc.



♩ = 72

216

Fl.

Cl.

Perc.

Pno.

Vln. *8va*

Vln.

Vla.

Vc.



♩ = 74

218

Fl.

Cl.

Perc.

Pno.

Vln. (8)

Vln.

Vla.

Vc.



220

Fl.

Cl.

Perc.

Pno.

Vln. (8)

Vln.

Vla.

Vc.

♩ = 76

33

222

Fl.

Cl.

Perc.

Pno.

Vln. (8)

Vln.

Vla.

Vc.

♩ = 76



224

Fl.

Cl.

Perc.

Pno.

Vln. (8)

Vln.

Vla.

Vc.

♩ = 78

226

Fl.

Cl.

Perc.

Pno.

♩ = 78

(8)

Vln.

Vln.

Vla.

Vc.



228

Fl.

Cl.

Perc.

Pno.

(8)

Vln.

Vln.

Vla.

Vc.

♩ = 80

230

Fl.

Cl.

Perc.

Pno.

Vln. (8)

Vln.

Vla.

Vc.



♩ = 82

232

Fl.

Cl.

Perc.

Pno.

Vln. (8)

Vln.

Vla.

Vc.

234

Fl.

Cl.

Perc.

Pno.

Vln. (8)

Vln.

Vla.

Vc.



236

Fl.

Cl.

Perc.

Pno.

Vln. (8)

Vln.

Vla.

Vc.

$\text{♩} = 84$

238

Fl.

Cl.

Perc.

Pno.

Vln. (8)

Vln.

Vla.

Vc.



240

Fl.

Cl.

Perc.

Pno.

Vln. (8)

Vln.

Vla.

Vc.

$\text{♩} = 86$

242

Fl.

Cl.

Perc.

Pno.

Vln. (8)

Vln.

Vla.

Vc.



244

Fl.

Cl.

Perc.

Pno.

Vln. (8)

Vln.

Vla.

Vc.

MB noter

This music is copyright protected

246 $\text{♩} = 90$ 39

Fl.

Cl.

Perc.

Pno.

Vln. (8)

Vln.

Vla.

Vc.

248

Fl.

Cl.

Perc.

Pno.

Vln. (8)

Vln.

Vla.

Vc.

