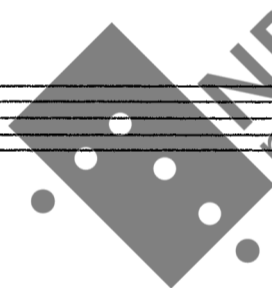


SONATINA

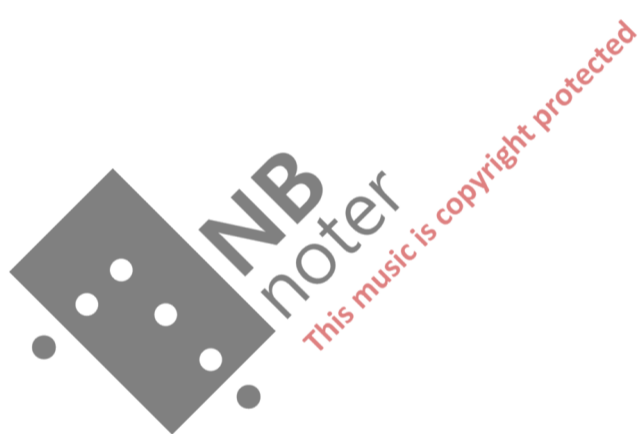
for

VIOLA SOLO

op. 14



This music is copyright protected



DURATA: 8 min.

SONATINA

Finn Mortensen, op. 14

Adagio ♩ = ca 54

I

VIOLA

pp mf

3 p mf p mp pp

p mf mp p

f p 3 ff

p f mp

Allegro moderato ♩ =

II

mf f p pp

ff — p — ff — pp

f — p — mf — p

mf — f — p — mf — p — f

p — f — p — f — p — f

f — pp

ff

ff

p — mf

p

f — p — f — p



Adagio capriccioso

III

Allegro vivace ♩ = 120

IV

Handwritten musical notation on a single staff, featuring a treble clef and a 3/4 time signature. The music consists of eighth and sixteenth notes with various accidentals (sharps, flats, naturals). A dynamic marking *mp* is present below the staff.

Handwritten musical notation on a single staff, continuing the piece. It includes a dynamic marking *mp* and a fermata over a note.

Handwritten musical notation on a single staff, featuring a treble clef and a 3/4 time signature. It includes a dynamic marking *mp* and a fermata over a note.

Handwritten musical notation on a single staff, featuring a treble clef and a 3/4 time signature. It includes a dynamic marking *mp* and a fermata over a note.

Handwritten musical notation on a single staff, featuring a treble clef and a 3/4 time signature. It includes a dynamic marking *mp* and a fermata over a note.

Handwritten musical notation on a single staff, featuring a treble clef and a 3/4 time signature. It includes a dynamic marking *mp* and a fermata over a note.

Handwritten musical notation on a single staff, featuring a treble clef and a 3/4 time signature. It includes a dynamic marking *mp* and a fermata over a note.

Handwritten musical notation on a single staff, featuring a treble clef and a 3/4 time signature. It includes a dynamic marking *mp* and a fermata over a note.

Handwritten musical notation on a single staff, featuring a treble clef and a 3/4 time signature. It includes a dynamic marking *mp* and a fermata over a note.

Handwritten musical notation on a single staff, featuring a treble clef and a 3/4 time signature. It includes a dynamic marking *mp* and a fermata over a note.

Handwritten musical notation on a five-line staff. It begins with a treble clef and a key signature of one sharp (F#). The notation includes several chords, some with accidentals, and a melodic line with eighth and sixteenth notes. The piece concludes with a double bar line.

Handwritten musical notation on a five-line staff. It continues the piece with various chords and melodic lines. The notation ends with a double bar line and a forte (*f*) dynamic marking.

Handwritten musical notation on a five-line staff. It features a melodic line with eighth notes and chords. The notation ends with a double bar line.

Handwritten musical notation on a five-line staff. It features a melodic line with eighth notes and chords. The notation ends with a double bar line.

Handwritten musical notation on a five-line staff. It features a melodic line with eighth notes and chords. The notation ends with a double bar line.

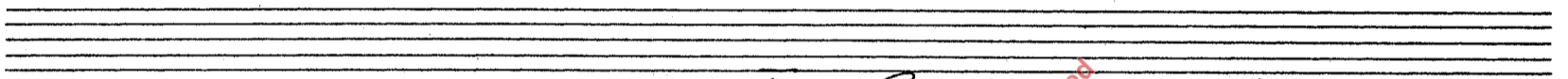
Handwritten musical notation on a five-line staff. It features a melodic line with eighth notes and chords. The notation ends with a double bar line and a mezzo-piano (*mp*) dynamic marking.

Handwritten musical notation on a five-line staff. It features a melodic line with eighth notes and chords. The notation ends with a double bar line.

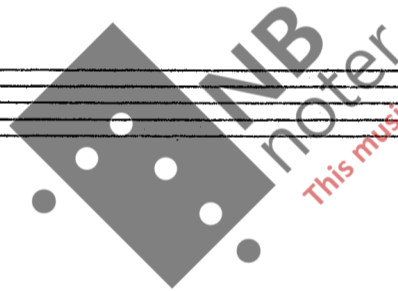
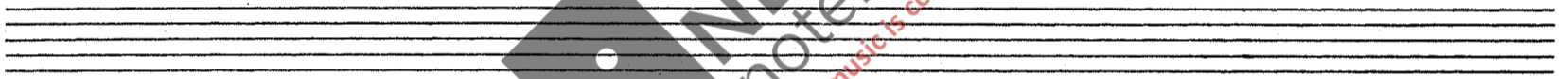
Handwritten musical notation on a five-line staff. It features a melodic line with eighth notes and chords. The notation ends with a double bar line and a forte (*f*) dynamic marking.

Handwritten musical notation on a five-line staff. It features a melodic line with eighth notes and chords. The notation ends with a double bar line.

Handwritten musical notation on a five-line staff. It features a melodic line with eighth notes and chords. The notation ends with a double bar line.



Leins (Munkhus), november 1958



This music is copyright protected

