

Concerto for guitar and ensemble

I

Kjell Marcussen 1988
Rev 2024

Tempo rubato ♩ = 60

molto espressivo

III

Guitar

f
(accelerando with crescendo)

Guit

sost.

Guit

① ② ③ ④ ⑤ ⑥

Guit

start slowly and increase tempo
poco accel.

Guit

a tempo

Guit

meno mosso acellerando p a p

Guit

ff start slowly

Accidentals applies for its layer
and through out the bar

Tempo I ♩ = 60

29

Fl

Cl

Vln

Cel

Guit

Pno

34

Fl

Cl

Vln

Cel

Guit

Pno

meno mosso tasto

ord. accel.

ad lib.

subito p

mf

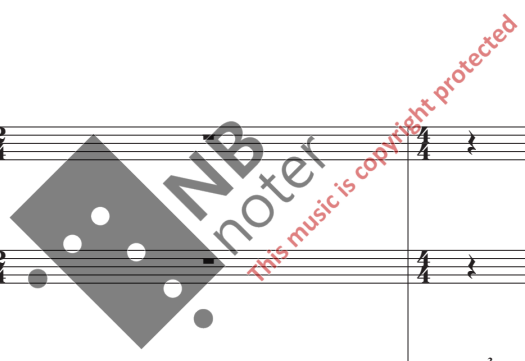
fz

mp

mp

mf

ord. piano



Musical score for Flute (Fl), Clarinet (Cl), Violin (Vln), and Cello (Cel) starting at measure 37. The Flute part features a complex sixteenth-note pattern. Dynamics include *f* and *p*.

Musical score for Guitar (Guit) and Piano (Pno) starting at measure 37. The Guitar part includes a *mf* dynamic and various techniques such as triplets, vibrato (*v*), and fingerings (1, 2, 3, 4). The Piano part features chords and triplets.

Musical score for Flute (Fl), Clarinet (Cl), Violin (Vln), Cello (Cel), and Piano (Pno) starting at measure 40. A box labeled "Normal flute" is present. The Flute and Clarinet parts play sixteenth-note patterns with a *mf* dynamic, transitioning to *f*. The Violin and Cello parts use *fz* (forzando) and include triplets and *arco* (arco) markings. The Piano part includes *legato* markings and triplets. Dynamics range from *fz* to *f*.

43 *meno mosso* ♩ = 38 *accel.* ♩ = 60

Fl *mf*

Cl *mf*

Vln *mf*

Cel *mf*

Guit *mf*

Pno *mf*

47

Fl *f*

Cl *f*

Vln *f*

Cel *f*

Pno *f*

49 *ritatardando* Lento ♩ = 48

Fl *pp*

Cl *pp*

Vln *pp*

Cel *pp*

ritatardando *pp* VI *mf*

Guit *mf*

Pno *pp*

52 *poco accelerando* *poco più mosso* ♩ = 54

Fl *p*

Cl *p*

Vln *pizz.*

Cel *p*

espress. *mf* III *mf* II

Guit *mf*

Pno *pp*

57

Alto flute

Fl

Cl

Vln

Cel

Guit

Pno

pizz.
mp

mf

p

arco
H
f

mp

VI II

s.p.

ord. *non legato*

62

Fl

Cl

Vln

Cel

Guit

Pno

mf

p

arco
H
mf

p

mf

p

sostenuto

mf

p

IV

66 *a tempo*

Fl *Normal flute* *H* *mp*

Cl *mp*

Vln *pizz.* *mp* *arco*

Cel *pizz.* *mf* *arco*

Guit *f* III IV

Pno *p*

70

Fl

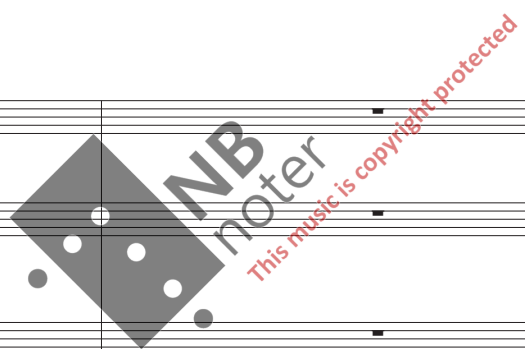
Cl

Vln *p*

Cel *mp*

Guit *espr.*

Pno *pp* *8va* *p*



73

Fl *mf* *H* *sost...*

Cl *mf* *H*

Vln *mf*

Cel *mf* *pizz.*

Guit *p* *II espress.* *IV* *f* *upper voice f, lover voice p*

Pno *mf* *opt. El piano* *pp*

77

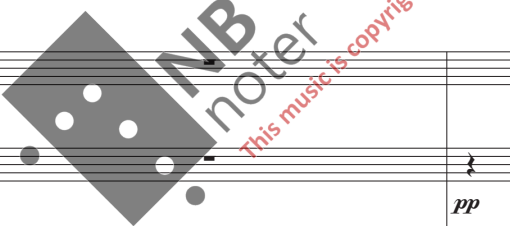
Cl

Vln *pp* *poco*

Cel

Guit *I* *6* *3* *2* *4*

Pno



Alto flute

81

Fl

Cl

Vln

Cel

Guit

Pno

p

p

mp

pizz.

arco

gliss

8^{va}

84

poco meno mosso ♩ = 52

Fl

Cl

Vln

Cel

Guit

Pno

mp

f

p

mp

p

arco

gliss

arco

p

molto espress

VIII

H



Normal flute

88

Fl *mf*

Cl *mf*

Vln

Cel

Pno *ord. piano*

91

Fl

Cl

Vln

Cel

Guit

Pno

Poco piu mosso ♩ = 60

p

pizz.

mf

pizz.

mp

pp

94

Fl *Alto flute* *p*

Cl *p*

Vln

Cel

Guit II 3 VIII VI

Pno

97

Fl *Normal flute* *H* *mf*

Cl

Vln *con sord.* *arco* *pp* *senza sord.*

Cel *Sordin* *arco* *pp* *senza sord.*

Guit VIII VI IX

Pno *p* *(pedal)*

Poco accelerando poco piu mosso ♩ = 64

102

Fl *p* *N*

Cl *mf*

Vln *mf* sempre trem.

Cel *mf* (trem.)

Guit *f*

Pno *mf*

106

Fl

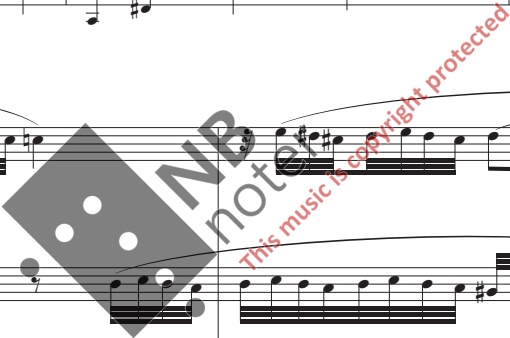
Cl

Vln

Cel

Guit *ff*

Pno



poco meno mosso ♩ = 60

staccato

108

Fl

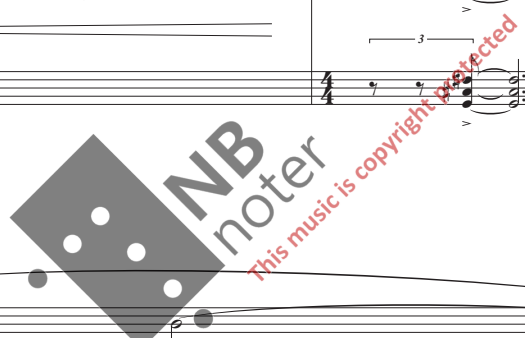
Cl

Vln

Cel

Guit

Pno



110

Fl

Cl

Vln

Cel

Pno

112 **Larghetto** ♩ = 54

Fl

Cl

Vln *H* *espres.* *p* *mf*

Cel *H* *espres.* *p* *mf*

Guit *mp* *mf* *sempre arpeggio* I

123 *accelerando*

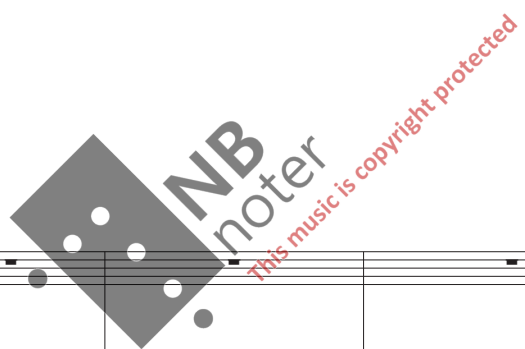
Fl

Cl *H* *p* *mf* 3 6

Vln *N* *mp* 3

Cel *N*

Guit V VIII



Andante ♩ = 64

129

Fl *mf*

Cl *mf*

Vln pizz. *mf* arco

Cel pizz. *mf* arco *ff* sub.

Guit *f*

Pno *p*

132

Fl *f*

Cl *f*

Vln *mf* *f* pizz. *fz* *mp*

Cel *mf* *fz* *mp*

Guit *fz* *f*

Pno *mf*

III *fz* *f*

8va

11

♩ = 60

135

Alto flute

Fl

Cl

Vln

Cel

Guit

Pno

mp

mp

arco

p

arco

mp

f

opt. El piano

pp

pp

IV

IV

139

Fl

Cl

Vln

Cel

Guit

Pno

p

in tempo

p

p

arco

p

arco

p

pp

pizz.

pizz.

mp

p

p

anima

anima

ord. piano

p

III

VII

VI

anima

anima

(s.p.)

♩ = 64

143

Fl

Cl

Vln

Cel

Guit

Pno

mf

pizz.

mf

pizz.

mf

V

f

(down)

mp

p

146

Normal flute

Fl

Cl

Vln

Cel

Guit

Pno

mf

poco accelerando

poco piu mosso

arco

f

sub:mf

tenuto sempre

IV

III

VII

148

Fl

Cl

Vln

Cel

Guit

Pno

IV

VI

VII

IX

p

150

Fl

Cl

Vln

Cel

Guit

Pno

VII

IV

(trem.)

>

152

Fl

Cl

Vln

Cel

Guit

Pno

II

IV

mf 3

mf 3

154

Fl

Cl

Vln

Cel

Pno

cresc.

f

cresc.

f

cresc.

f

f

156

Fl

Cl

Vln

Cel

(non trem)

Pno

159

Fl

Cl

Vln

Cel

Pno

diminuendo

diminuendo

diminuendo

diminuendo

tempo rubato

161

Fl *p* *pp*

Cl *p* *pp*

Vln *pp*

Cel *pp*

Cadenza

Guit *f* (Harm)

Pno *loco* *pp*

Guit VI *mf*

poco piu mosso

Guit VIII IV VII *f*

meno mosso

Guit I *f*

Atacca

177

Vln

Cel

Guit

Pno

poco accel.

ff

piu mosso

ritatardando

p

anima

Atacca

Atacca

II

Moderato ♩ = 76

180

Fl

Cl

Vln

Cel

Guit

Pno

espress.

p

pizz.

mf

temuto

p

pp

p

188

Fl *espr.* *H* *mf* *6*

Cl *espr.* *H* *mf* *6*

Vln *N* *p* *arco*

Cel *mf*

Guit *mf* VII III VII II I

Pno *mp*

198

Fl *f* *mp* *p*

Cl *f* *mf*

Vln *pizz.*

Cel *mf* *f*

Guit *p* III

Pno *mf* *p*

204

tempo rubato **Moderato**

Fl

Cl

Vln

Cel

Guit

Pno

mp *p* *mf* *p* *mp* *pp* *espr.* IX

arco *pizz.*

212

Fl

Cl

Vln

Cel

Guit

p *mp* *arco* VII VI II IV



219

Fl

Cl

Vln

Cel

Guit

Pno

mf

mp

p

pp

IV

V

222

Fl

Cl

Vln

Cel

Guit

Pno

crescendo

mf

sostenuto

f

crescendo

crescendo

crescendo

f

crescendo

mf

mf

Moderato

225

Fl

Cl

Vln

Cel

Guit

Pno

pizz.
mp
pizz.
mp
p
ppp
f
pp

V VI VII VII I

III

233

Alto flute

Fl

Cl

Vln

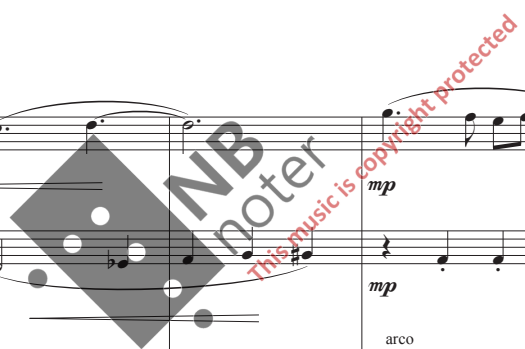
Cel

Guit

Pno

p
mp
mp
mf
p
p
pp
mp
mf
p
arco
arco

III VI IV V VIII IV



sostenuto $\text{♩} = 76$

Normal flute

240

Fl mf

Cl *espress.* f mp

Vln mp

Cel mp

Guit III f *espr.* IV

Pno p mf p

248

Fl p

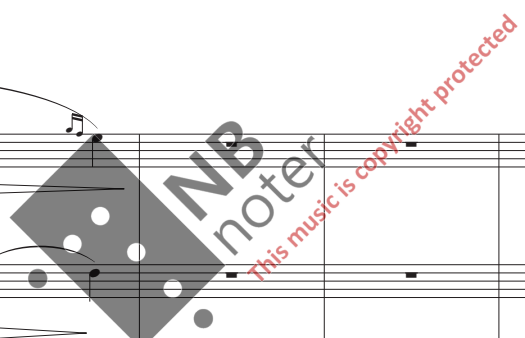
Cl p

Vln *pizz.* mp

Cel *pizz.* mp

Guit VIII mf

Pno mf



Fl

Cl

Vln

Cel

Guit

Pno

arco

pp

pp

mp

mf

mf

espr.

VIII

III

VI

VIII

IV

f

p

mp

(b)

Fl

Cl

Vln

Cel

Guit

Pno

IV

f

p

mp

f

265 N

Fl *mf*

Cl *mf*

Vln H *f*

Cel *f*

Guit

Pno *mp*

IV

269

Fl *mp* *p*

Cl *mp* *p*

Vln *p* *mp* *mf* *p*

Cel *p* *mp* *mf*

Guit *mf*

Pno *p* *pp*

poco sostenuto

pizz. arco

279

Fl

Cl

Vln

Cel

Guit

Pno

p

mp

arco

i m a

II VII

284

Fl

Cl

Vln

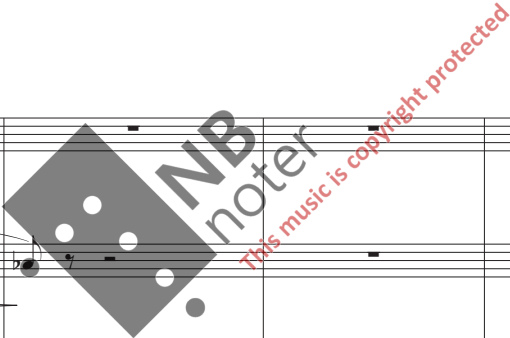
Cel

Guit

Pno

poco accelerando

III



Poco piu mosso

289

Fl H *mp espr.*

Cl

Vln *p*

Cel *p*

Guit XI IV II

Pno *pp*

poco meno mosso e doleroso

sostenuto

293

Fl *p* *Alto flute*

Cl H *mf* *pp*

Vln H *mf*

Cel

Guit

Pno *p* *pp*

303 poco piu mosso

Fl

Cl

Vln

Cel

Guit

Pno

p

pizz.

p

f

p

arco

III IV III IV

1 4 2 3 0 4 3 1 2 0 2 1 3 2 1 2 3 2 1 3 2 1 4 2 0 0

311

Fl

Cl

Vln

Cel

Pno

f

(trem)

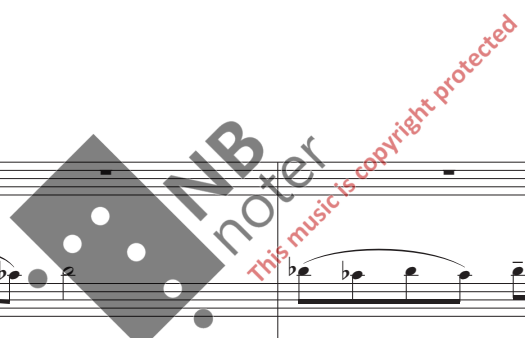
mf

(trem)

mf

f

H



Normal flute

315

Fl

Cl

Vln

Cel

Pno

319

Fl

Cl

Vln

Cel

Pno

morendo

mp

pp

pp

mf

pp

rall...

325 *accelerando* \longrightarrow **Vivo** ♩ = 148

Fl

Cl

Vln

Cel

Guit

m i

p

crescendo

Rasqu.

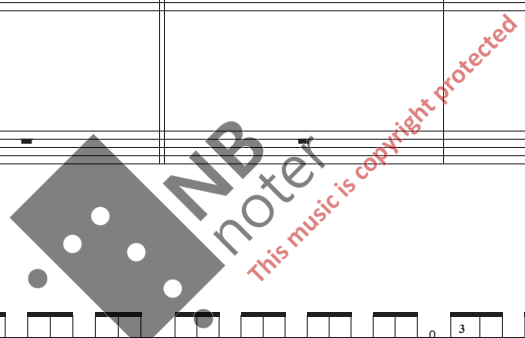
p m i sim.

f

Chords louder than upper part

VI

Pno



Guit

I

Guit

III

Atacca

339

Fl

Cl

Vln

Cel

Guit

Pno

f

f

f

mf

f

mf

f

ff

f

mf

f

mf

Détachè

pizz.

arco

f

mf

f

mf

Atacca

344

Fl

Cl

Vln

Cel

Pno

mf

f

mf

f

f

f



348

Fl

Cl

Vln

Cel

Pno

p

This page contains musical notation for measures 348 through 351. It features five staves: Flute (Fl), Clarinet (Cl), Violin (Vln), Cello (Cel), and Piano (Pno). The Flute and Clarinet parts have melodic lines with slurs and accents. The Violin part consists of sustained chords. The Cello part has a rhythmic accompaniment of eighth notes. The Piano part is marked with a piano (*p*) dynamic and features a complex accompaniment with slurs and accents.

352

Fl

Cl

Vln

Cel

Guit

Pno

f

This page contains musical notation for measures 352 through 355. It features six staves: Flute (Fl), Clarinet (Cl), Violin (Vln), Cello (Cel), Guitar (Guit), and Piano (Pno). The Flute and Clarinet parts continue with melodic lines. The Violin part has sustained chords. The Cello part has a rhythmic accompaniment. The Guitar part is marked with a forte (*f*) dynamic and features a melodic line with slurs and accents. The Piano part continues with a complex accompaniment.

356

Vln *p*

Cel pizz. *mp*

Guit VII

Pno *pp*

360

Cl

Vln *f*

Cel *f*

Guit V ord.

Pno

364

Fl

Cl

Vln arco

Cel arco

Guit

Pno

mf

p

f

H

368

Fl

Cl

Vln pizz.

Cel pizz.

Guit

Pno

mp

f

p

IV

372

Fl

Cl

Vln

Cel

Guit

Pno

376

Fl

Cl

Vln

Cel

Guit

Pno

380

Fl

Cl

Vln

Cel

Guit

Pno

pp

p

arco

p

p

s.p.

marcato

mf

VI III VI IX VII

384

Fl

Cl

Vln

Cel

Guit

Pno

f

f

f

f

f

mf

f

arco

(stacc.)

IX Rasq.

III

388

Fl

Cl

Vln

Cel

Pno

H

(non stacc)

392

Fl

Cl

Vln

Cel

Guit

Pno

Poco meno mosso $\text{♩} = 140$

pizz.

mf

pizz.

mp

III (legato)

f

396

Vln

Cel

Guit

Pno

400

Fl

Cl

Vln

Cel

Guit

Pno

404

Fl

Cl

Vln

Cel

Guit

Pno

ord. VII V IV (s.p.)

arco gliss gliss

pp

408

Vln

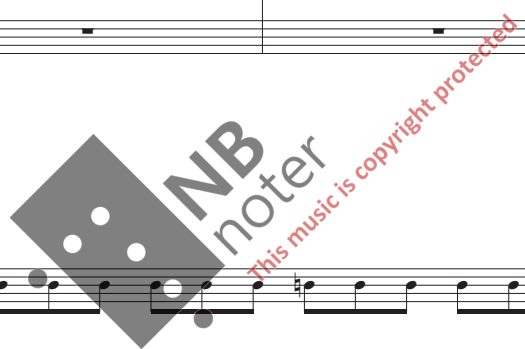
Cel

Guit

Pno

pizz.

ord. I III



poco accelerando

411

Fl

Cl

Vln

Cel

Guit

Pno

pp

pp

arco

pp

sub. p

cresc. poco a poco

p

mf

f

ff

mf

mf

IV

Rasq.

A tempo ♩ = 148

415

Fl

Cl

Vln

Cel

Guit

Pno

espr.

f

mf

mf

mf

mp

opt. El piano

419

Fl

Cl

Vln

Cel

Pno

423

Fl

Cl

Vln

Cel

Pno

427

Fl

Cl

Vln

Cel

Pno

f

mf

mf

mf

431

Fl

Cl

Vln

Cel

Guit

Pno

trem

trem

pizz.

p

pizz.

p

III

II

435

Fl

Cl

Vln

Cel

Guit

p

p

III

I

II

439

Fl

Cl

Vln

Cel

Guit

Pno

ord. piano

pp

IV

VI

443

Fl

Cl

Vln

Cel

Guit

Pno

arco

mp

mf

pp

① ④ ② ① ② IV

447

Fl

Cl

Vln

Cel

Guit

Pno

mf

arco

mf

sfz

V Rasqu. VI III

451

Fl

Cl

Vln

Cel

Guit

Pno

456

Fl

Cl

Vln

Cel

Guit

Pno

460

Fl

Cl

Vln

Cel

Guit

Pno

p

ff

spicc.

mf

arco

mf

f

464

Fl

Cl

Vln

Cel

Guit

Pno

f

467

Fl

Cl

Vln

Cel

Guit

Pno

pp

pizz.

arco

crescendo

mf

f

mp

crescendo

Rico.

1

III

2

VI

VIII

Rasq.

crescendo

loco

471

Fl

Cl

Vln

Cel

Guit

Pno

f

tr

ff

ff

f

tr

sim.

f

tr

tr

tr