

ODDVAR LÖNNER

VIOLINKONZERT



Tempo, Dynamik, Artikulation etc. werden von den Interpreten (Dirigenten u. Konzertmeister) vereinbart. Tempowechsel innerhalb eines Satzes ist unerwünscht.

Die Überschriften stammen aus dem ältesten Teil „Gathas“ des „Awesta“ von Zoroaster (Zarathustra).



1) Wegweiser zur heiligen Lehre.

3 Flauti

2 Corni in F

Violino solo

Violino 1)

Viola 1)

Basso 2)

Tratto al disotto sul G e E 3)

Ordinario ma con sordino

3 Fl.

2 Cor. F

Vl. sol.

VL.

Vla.

Basso

1) Ideal ist eine Besetzung mit mehreren Violinen u. Bratschen.

2) Beliebige(s) Baßinstrument(e).

3) Der Bogen wird zwischen den Saiten u. den Instrumentenkörper gesteckt. Somit ermöglicht man das zweistimmige Spielen auf G u. E - Saiten von Unten nach Oben.

Handwritten musical score for measures 1-13. The score is written on seven staves. From top to bottom, the staves are labeled: 3 Fl., 2 Cor. F, Vl. solo, Vl., Vla., and Bass. The music is in a key with one sharp (F#) and a common time signature. The notation includes various note values, rests, and dynamic markings. A large watermark 'NB noter' is visible across the middle of the page.

Handwritten musical score for measures 14-17. The score is written on seven staves, continuing from the previous page. The staves are labeled: 3 Fl., 2 Cor. F, Vl. solo, Vl., Vla., and B. (Bass). Measure 14 is marked with a '14' above the staff. The notation includes various note values, rests, and dynamic markings. A large watermark 'NB noter' is visible across the middle of the page.

21

3 Fl.

2 Cor. F

Vl. solo

Vl.

Vla.

B.

senza sordino

28

3 Fl.

2 Cor. F

Vl. solo

Vl.

Vla.

B.

35

3 Fl.

2 Cor.
F

Vl. solo

Vl.

Vla.

B.

42

3 Fl.

2 Cor.
F

Vl. solo

Vl.

Vla.

B.

tr.

tr.

sul ponticello

Handwritten musical score for measures 45-48. The score is written for a symphony orchestra with the following parts: 3 Flutes (3 Fl.), 2 Cor. F (2 Cor. F), Vl. solo (Vl. solo), Vl. (Vl.), Vla. (Vla.), and B. (B.). The time signature is 3/4. The key signature has one flat (B-flat). The notation includes various notes, rests, and dynamic markings such as *pp* and *ppp*. There are also some performance instructions like *tr* (trill) and *acc.* (accents).

Handwritten musical score for measures 49-52. The score is written for a symphony orchestra with the following parts: 3 Fl. (3 Fl.), 2 Cor. F (2 Cor. F), Vl. solo (Vl. solo), Vl. (Vl.), Vla. (Vla.), and B. (B.). The time signature is 3/4. The key signature has one flat (B-flat). The notation includes various notes, rests, and dynamic markings such as *pp* and *ppp*. There are also some performance instructions like *tr* (trill) and *acc.* (accents). A large watermark "NB noter" is visible over the score, along with the text "This music is copyright protected".

56

3Fl.

2Cor.
F

Vl. solo

Vl.

Vla.

B.

63

3Fl.

2Cor.
F

Vl. solo

Vl.

Vla.

B.

Handwritten musical score for the first system. The staves are labeled as follows from top to bottom: 3 Fl., 2 Cor. F, Vl. solo, Vl., Vla., and B. The music is written in a key with one sharp (F#) and a 4/4 time signature. The score includes various musical notations such as notes, rests, and dynamic markings. A large watermark is visible across the middle of the page.

Handwritten musical score for the second system. The staves are labeled as follows from top to bottom: 3 Fl., 2 Cor. F, Vl. solo, Vl., Vla., and B. The music continues from the first system, maintaining the same key signature and time signature. The score includes various musical notations such as notes, rests, and dynamic markings. A large watermark is visible across the middle of the page.

77

3 Fl.

2 Cor. F

Vl. solo

Vl.

Vla.

B

84

3 Fl.

2 Cor. F

Vl. solo

Vl.

Vla.

B

3 Fl.

2 Cor.
F

Vl. solo

Vl.

Vla.

B.

3 Fl.

2 Cor.
F

Vl. solo

Vl.

Vla.

B.

98

3 Fl.

2 Cor. F

Vi. solo

Vi.

Vla.

B.

105

3 Fl.

2 Cor. F

Vi. solo

Vi.

Vla.

B.

Handwritten musical score for measures 112-114. The score includes staves for 3 Fl., 2 Cor. F, Vl. solo, Vl., Vla., and B. The music is in a key with three sharps (F#, C#, G#) and a 3/4 time signature. Measure 112 features a complex chord structure with a 3/4 time signature. Measure 113 continues with similar harmonic language. Measure 114 shows a change in the bass line and some melodic movement in the upper parts.

NB Moter

This music is copyright protected

Handwritten musical score for measures 119-121. The score includes staves for 3 Fl., 2 Cor. F, Vl. solo, Vl., Vla., and B. The music is in a key with three sharps (F#, C#, G#) and a 3/8 time signature. Measure 119 features a complex chord structure with a 3/8 time signature. Measure 120 continues with similar harmonic language. Measure 121 shows a change in the bass line and some melodic movement in the upper parts.

126

Cor. 2
F

Vl. solo

Cor. 2
F

Vl. solo

133

Cor. 2
F

Vl. solo

140

Vl. solo

sul ponticello

2) O Ahura, offenbare Dich mir und gib mir Kraft durch die Liebe.

chorale

2 corni
in F

Violino

Viola

Basso

2 Cor. F

Vl.

Vla.

B.

2 Cor. F

Vl.

Vla.

B.

2 Cor. F

Vl.

Vla.

B.

2 Cor. F

Vl.

Vla.

B.

2 Cor. F

Vl.

Vla.

B.

2 Cor. F

Vl.

Vla.

B.

Fine.

Intermezzo

3 Flauti

Violino solo

3 Fl.

Vi. solo

3 Fl.

Vi. solo

3 Fl.

Vi. solo

3Fl.

Vl. solo

Pizz.

This system contains two staves. The top staff is for the 3rd Flute (3Fl.) and the bottom staff is for the Violin solo (Vl. solo). The 3Fl. part begins with a whole rest, followed by a quarter note G4, a quarter note A4, and a quarter note B4. The Vl. solo part starts with a quarter note G4, followed by a quarter note A4, and a quarter note B4. A 'Pizz.' (pizzicato) marking is placed above the Vl. solo staff. The system concludes with a double bar line and a repeat sign.

3Fl.

Vl. solo

arco

This system contains two staves. The top staff is for the 3rd Flute (3Fl.) and the bottom staff is for the Violin solo (Vl. solo). The 3Fl. part has a whole rest. The Vl. solo part begins with a quarter note G4, followed by a quarter note A4, and a quarter note B4. An 'arco' marking is placed above the Vl. solo staff. The system concludes with a double bar line and a repeat sign.

3Fl.

Vl. solo

This system contains two staves. The top staff is for the 3rd Flute (3Fl.) and the bottom staff is for the Violin solo (Vl. solo). The 3Fl. part has a whole rest. The Vl. solo part begins with a quarter note G4, followed by a quarter note A4, and a quarter note B4. The system concludes with a double bar line and a repeat sign.

3Fl.

Vl. solo

This system contains two staves. The top staff is for the 3rd Flute (3Fl.) and the bottom staff is for the Violin solo (Vl. solo). Both parts have active melodic lines. The system concludes with a double bar line and a repeat sign.

Handwritten musical score for the first system, featuring three staves: 3 Fl. (top), 3 Fl. (middle), and Vl. solo (bottom). The music includes various notes, rests, and accidentals (sharps, flats, naturals).

Handwritten musical score for the second system, featuring three staves: 3 Fl. (top), 3 Fl. (middle), and Vl. solo (bottom). The music includes various notes, rests, and accidentals.

Handwritten musical score for the third system, featuring three staves: 3 Fl. (top), 3 Fl. (middle), and Vl. solo (bottom). The music includes various notes, rests, and accidentals.

Chorale da capo al fine.

3) In Demut.

Gigue

Flauto 1

Violino solo

Violino

Viola

Basso

The first system of the handwritten musical score for 'Gigue' consists of five staves. The Flauto 1 staff (top) has a treble clef, a key signature of one flat (B-flat), and a 9/8 time signature. It contains a melodic line with various notes and rests. The Violino solo staff is empty. The Violino staff has a treble clef, one flat, and 9/8 time, with a melodic line. The Viola staff has a bass clef, one flat, and 9/8 time, with a bass line. The Basso staff has a bass clef, one flat, and 9/8 time, with a bass line. The system ends with a double bar line.

Fl.

Vi. solo

Vi.

Vla.

B.

The second system of the handwritten musical score consists of five staves. The Fl. staff (top) has a treble clef, one flat, and 9/8 time, with a melodic line. The Vi. solo staff is empty. The Vi. staff has a treble clef, one flat, and 9/8 time, with a melodic line. The Vla. staff has a bass clef, one flat, and 9/8 time, with a bass line. The B. staff has a bass clef, one flat, and 9/8 time, with a bass line. The system ends with a double bar line.

Fl.

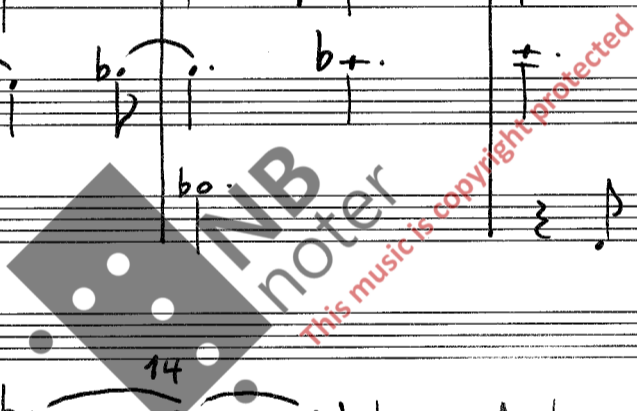
Vi. solo

Vi.

Vla.

B.

The third system of the handwritten musical score consists of five staves. The Fl. staff (top) has a treble clef, one flat, and 9/8 time, with a melodic line. The Vi. solo staff is empty. The Vi. staff has a treble clef, one flat, and 9/8 time, with a melodic line. The Vla. staff has a bass clef, one flat, and 9/8 time, with a bass line. The B. staff has a bass clef, one flat, and 9/8 time, with a bass line. The system ends with a double bar line.



Handwritten musical score for measures 18-21. The score is written on five staves: Fl. (Flute), Vl. solo (Violin solo), VI. (Violin), Vla. (Viola), and B. (Bass). Measure 21 is marked with a '21' above the staff. The music features various rhythmic patterns and accidentals.

Handwritten musical score for measures 22-28. The score is written on five staves: Fl., Vl. solo, VI., Vla., and B. Measure 28 is marked with a '28' above the staff. The music continues with complex rhythmic and melodic lines.

Handwritten musical score for measures 29-32. The score is written on five staves: Fl., Vl. solo, VI., Vla., and B. The music concludes with sustained notes and rests.

35

FL.

Vl. solo

Vl.

Vla.

B.

42

FL.

Vl. solo

Vl.

Vla.

B.

FL.

Vl. solo

Vl.

Vla.

B.

49

Handwritten musical score for measures 49-55. The score is written for five staves: Flute (Fl.), Violin solo (Vl. solo), Violin (Vl.), Viola (Vla.), and Bass (B.). The Flute part begins with a treble clef and a key signature of one flat (B-flat). The Violin solo part is in the treble clef. The Violin and Viola parts are in the treble clef. The Bass part is in the bass clef. The music features various notes, rests, and dynamic markings such as *pp* and *ppp*. A large watermark is visible across the middle of the page.

56

Handwritten musical score for measures 56-62. The score continues for the five staves: Flute (Fl.), Violin solo (Vl. solo), Violin (Vl.), Viola (Vla.), and Bass (B.). The Flute part begins with a treble clef and a key signature of one flat (B-flat). The Violin solo part is in the treble clef. The Violin and Viola parts are in the treble clef. The Bass part is in the bass clef. The music features various notes, rests, and dynamic markings such as *pp* and *ppp*. A large watermark is visible across the middle of the page.

63

Handwritten musical score for measures 63-69. The score continues for the five staves: Flute (Fl.), Violin solo (Vl. solo), Violin (Vl.), Viola (Vla.), and Bass (B.). The Flute part begins with a treble clef and a key signature of one flat (B-flat). The Violin solo part is in the treble clef. The Violin and Viola parts are in the treble clef. The Bass part is in the bass clef. The music features various notes, rests, and dynamic markings such as *pp* and *ppp*. A large watermark is visible across the middle of the page.

Handwritten musical score for measures 67-70. The score includes staves for Flute (Fl.), Violin solo (Vl. solo), Violin (Vl.), Viola (Vla.), and Bass (B.). The music is in a key with one flat (B-flat major or D minor) and a common time signature. The Flute part is mostly rests. The Violin solo part features a melodic line with various ornaments and slurs. The Violin and Viola parts provide harmonic support with chords and moving lines. The Bass part has a simple accompaniment.

Handwritten musical score for measures 70-73. The score includes staves for Flute (Fl.), Violin solo (Vl. solo), Violin (Vl.), Viola (Vla.), and Bass (B.). The music continues in the same key and time signature. The Flute part has a melodic line starting in measure 70. The Violin solo part has a more active role with a melodic line. The Violin and Viola parts continue their harmonic support. The Bass part has a simple accompaniment. A large watermark is visible over the score.

Handwritten musical score for measures 73-77. The score includes staves for Flute (Fl.), Violin solo (Vl. solo), Violin (Vl.), Viola (Vla.), and Bass (B.). The music continues in the same key and time signature. The Flute part has a melodic line starting in measure 73. The Violin solo part has a more active role with a melodic line. The Violin and Viola parts continue their harmonic support. The Bass part has a simple accompaniment. A large watermark is visible over the score.

84

Fl.
 Vl. solo
 Vl.
 Vla.
 B.

Fl.
 Vl. solo
 Vl.
 Vla.
 B.

91
 Fl.
 Vl. solo
 Vl.
 Vla.
 B.

98

Fl.

Vl. solo

Vl.

Vla.

B.

105

Fl.

Vl. solo

Vl.

Vla.

B.

Fl.

Vl. solo

Vl.

Vla.

B.

112

119

Tönberg, den 3. August 1977