

Oddvar S. Kvam

op. 59 B

# TRIO OSTINATO

per flauto, viola e chitarra



NB  
noter

This music is copyright protected

# TRIO OSTINATO

Allegretto per Flauto, Viola e chitarra  
(d. = ca. 92-104)

Oddvar S. Kvam, op. 59B.

Fl.

V.

Ch.

Fl.

V.

Ch.

Fl.

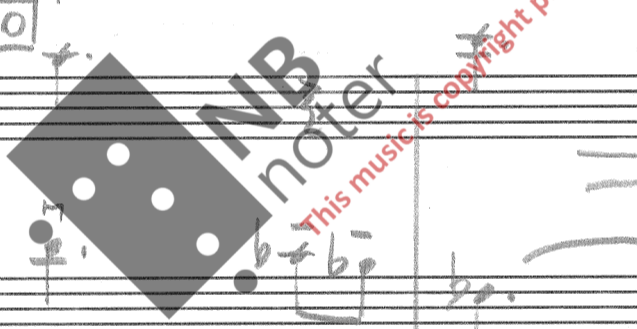
V.

Ch.

Fl.

V.

Ch.



20

Fl. *mf*

V *mf* pizz.

Ch. *f*

25

Fl. *mp* *f* *mf*

V *f* *sim.* *mp* *mf*

Ch. *mp* *f* *mp* *mf*

arco

30

Fl. *f*

V *sim.* *f* *(v v)*

Ch. *f* *tratt.....*

35

Fl.

V *p* *a tempo*

Ch. *p*

40

Fl. *b* *ff*

V *v* *nv* *n* *pizz*

Ch.

45 (Piu mosso  $d = ca. 104$ )

Fl. *(accell.)*

V *(accell.)* *mf*

Ch. *mf*

50

Fl. *mf*

V *v* *n*

Ch.

55

Fl.

V *mf*

Ch. *sempre sim.*



Handwritten musical score for the first system, measures 55-59. It features three staves: Flute (F), Violin (V), and Cello (Ch.). The Flute part has rests. The Violin part has melodic lines with slurs and accents. The Cello part has a rhythmic accompaniment of eighth notes. A dynamic marking 'P' is present in the Cello part at measure 59.

Handwritten musical score for the second system, measures 60-64. It features three staves: Flute (F), Violin (V), and Cello (Ch.). Measure 60 is marked with a box containing '60'. The Flute part starts with a dynamic marking 'mp'. The Violin part has melodic lines with slurs and accents. The Cello part has a rhythmic accompaniment of eighth notes. Dynamic markings 'f' and 'f' are present in the Violin and Cello parts respectively.

Handwritten musical score for the third system, measures 65-74. It features three staves: Flute (F), Violin (V), and Cello (Ch.). Measure 65 is marked with a box containing '65'. Measure 70 is marked with a box containing '70'. The Flute part has rests. The Violin part has melodic lines with slurs and accents. The Cello part has a rhythmic accompaniment of eighth notes. Dynamic markings 'P' and 'P alla punta' are present in the Violin and Cello parts respectively. A large watermark 'INB noter' is overlaid on the score.

Handwritten musical score for the fourth system, measures 75-80. It features three staves: Flute (F), Violin (V), and Cello (Ch.). Measure 75 is marked with a box containing '75'. The Flute part has melodic lines with slurs and accents. The Violin part has melodic lines with slurs and accents. The Cello part has a rhythmic accompaniment of eighth notes. Dynamic markings 'P' and 'P' are present in the Violin and Cello parts respectively.

80

Handwritten musical score for measures 80-84. It consists of three staves: Flute (Fl.), Violin (V), and Cello/Double Bass (Cb.).

- Flute (Fl.):** Treble clef, 4/4 time. Melodic line with dynamics *mp* and *pp*.
- Violin (V):** Treble clef, 3/4 time. Accompanying line with dynamics *mp* and *pp*.
- Cello/Double Bass (Cb.):** Bass clef, 4/4 time. Rhythmic accompaniment with dynamics *mp* and *pp*. Measures are numbered (2) through (8).

85

90

Handwritten musical score for measures 85-94. It consists of three staves: Flute (Fl.), Violin (V), and Cello/Double Bass (Cb.).

- Flute (Fl.):** Treble clef, 4/4 time. Melodic line with dynamics *mf*.
- Violin (V):** Treble clef, 3/4 time. Accompanying line with dynamics *mf*.
- Cello/Double Bass (Cb.):** Bass clef, 4/4 time. Rhythmic accompaniment with dynamics *mf*. Measures are numbered (2) through (8).

95



Handwritten musical score for measures 95-104. It consists of three staves: Flute (Fl.), Violin (V), and Cello/Double Bass (Cb.).

- Flute (Fl.):** Treble clef, 4/4 time. Melodic line with dynamics *pp*, *mp*, and *f*.
- Violin (V):** Treble clef, 3/4 time. Accompanying line with dynamics *pp*, *mp*, and *f*.
- Cello/Double Bass (Cb.):** Bass clef, 4/4 time. Rhythmic accompaniment with dynamics *pp* and *mp*. Measures are numbered (9) and (10).

100

Handwritten musical score for measures 100-104. It consists of three staves: Flute (Fl.), Violin (V), and Cello/Double Bass (Cb.).

- Flute (Fl.):** Treble clef, 4/4 time. Melodic line.
- Violin (V):** Treble clef, 3/4 time. Accompanying line with dynamics *f* and *vibr.* (vibrato).
- Cello/Double Bass (Cb.):** Bass clef, 4/4 time. Rhythmic accompaniment. Measures are numbered (2) and (4).

105

Fl.

V.

Ch.

*ponticello*

110

Fl.

V.

Ch.

Moderato (♩ = ca. 88)

115

Fl.

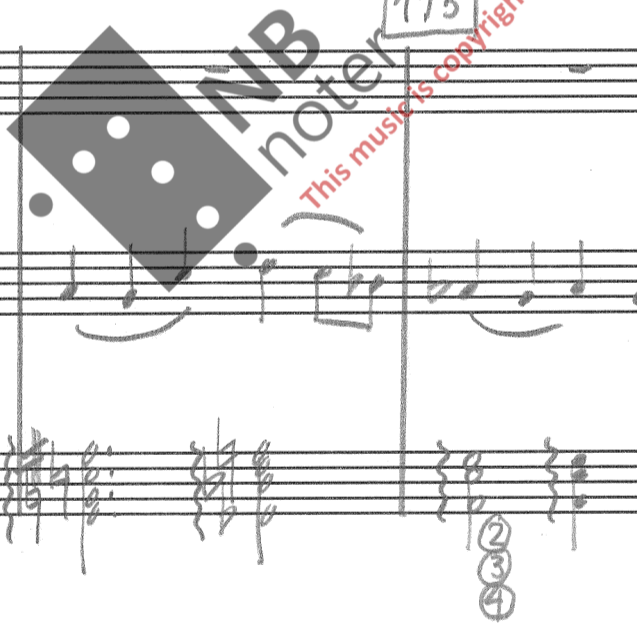
V.

Ch.

Fl.

V.

Ch.



8

120

agitato...

Fl. *mp* *pp* *agitato...*

V *pp* *agitato...*

Ch

125

Fl. *al f*

V *al f* *f*

Ch *mp* *f*

130

Fl. *mf* *f*

V *f* *mf* *mp* *f*

Ch *arp* *al*

135

138

Fl. *mf*

V *mp*

Ch

③  
④  
⑤



meno agitato .. 140 .....

Handwritten musical score for the first system, measures 133-140. It features three staves: Flute (Fl.), Violin (V.), and Cello/Double Bass (Cb.). The Flute staff is mostly empty. The Violin staff contains a melodic line with slurs and a dynamic marking of *p*. The Cello/Double Bass staff shows a bass line with various accidentals and a dynamic marking of *p*. A box containing the number 140 is located at the end of the system.

a tempo come sopra

Handwritten musical score for the second system, measures 141-144. It features three staves: Flute (Fl.), Violin (V.), and Cello/Double Bass (Cb.). The Flute staff is mostly empty. The Violin staff contains a melodic line with slurs and a dynamic marking of *pp*. The Cello/Double Bass staff shows a bass line with various accidentals and a dynamic marking of *mf*. A box containing the number 145 is located at the beginning of the system.

Handwritten musical score for the third system, measures 145-149. It features three staves: Flute (Fl.), Violin (V.), and Cello/Double Bass (Cb.). The Flute staff is mostly empty. The Violin staff contains a melodic line with slurs and a dynamic marking of *p*. The Cello/Double Bass staff shows a bass line with various accidentals and a dynamic marking of *p*. A box containing the number 145 is located at the beginning of the system.

Handwritten musical score for the fourth system, measures 150-153. It features three staves: Flute (Fl.), Violin (V.), and Cello/Double Bass (Cb.). The Flute staff contains a melodic line with slurs and a dynamic marking of *p*. The Violin staff contains a melodic line with slurs and a dynamic marking of *p*. The Cello/Double Bass staff shows a bass line with various accidentals and a dynamic marking of *p*. A box containing the number 150 is located at the beginning of the system. The system ends with a double bar line and a first ending bracket labeled '1)'. Handwritten notes below the Cello/Double Bass staff include 'L3-L3' and 'accell. e cresc.'.

il numero de rep. ad. lib.

Tempo come sopra

Handwritten musical score for the first system, measures 1-3. It features three staves: Flute (Fl.), Violin (V.), and Cello (Ch.).

- Flute (Fl.):** Starts with a dynamic marking of *f*. The first measure contains a triplet of eighth notes. The second measure contains a triplet of eighth notes followed by a quarter note. The third measure contains a quarter note followed by two eighth notes.
- Violin (V.):** Starts with a dynamic marking of *f*. The first measure contains a quarter note. The second measure contains a triplet of eighth notes. The third measure contains a quarter note followed by two eighth notes.
- Cello (Ch.):** Starts with a dynamic marking of *f*. The first measure contains a quarter note. The second measure contains a triplet of eighth notes. The third measure contains a quarter note followed by two eighth notes.

Handwritten annotations include a circled '3' under the first triplet, and '3+3+2' above the second measure of each staff.

Handwritten musical score for the second system, measures 4-7. It features three staves: Flute (Fl.), Violin (V.), and Cello (Ch.).

- Flute (Fl.):** Starts with a dynamic marking of *f*. The first measure contains a quarter note. The second measure contains a quarter note. The third measure contains a quarter note. The fourth measure contains a quarter note. The fifth measure contains a quarter note. The sixth measure contains a quarter note.
- Violin (V.):** Starts with a dynamic marking of *mp*. The first measure contains a quarter note. The second measure contains a quarter note. The third measure contains a quarter note. The fourth measure contains a quarter note. The fifth measure contains a quarter note. The sixth measure contains a quarter note.
- Cello (Ch.):** Starts with a dynamic marking of *mp*. The first measure contains a quarter note. The second measure contains a quarter note. The third measure contains a quarter note. The fourth measure contains a quarter note. The fifth measure contains a quarter note. The sixth measure contains a quarter note.

Handwritten annotations include a circled '5' under the first measure of the Cello staff, and a box labeled '5A' above the first measure of the Flute staff. The instruction 'Sim. sempre' is written below the first measure of the Violin staff.

Handwritten musical score for the third system, measures 8-11. It features three staves: Flute (Fl.), Violin (V.), and Cello (Ch.).

- Flute (Fl.):** Starts with a dynamic marking of *f*. The first measure contains a quarter note. The second measure contains a quarter note. The third measure contains a quarter note. The fourth measure contains a quarter note. The fifth measure contains a quarter note. The sixth measure contains a quarter note.
- Violin (V.):** Starts with a dynamic marking of *f*. The first measure contains a quarter note. The second measure contains a quarter note. The third measure contains a quarter note. The fourth measure contains a quarter note. The fifth measure contains a quarter note. The sixth measure contains a quarter note.
- Cello (Ch.):** Starts with a dynamic marking of *f*. The first measure contains a quarter note. The second measure contains a quarter note. The third measure contains a quarter note. The fourth measure contains a quarter note. The fifth measure contains a quarter note. The sixth measure contains a quarter note.

Handwritten annotations include a box labeled '10A' above the first measure of the Flute staff, and a red watermark 'This music is copyright protected' across the middle of the system.

Handwritten musical score for the fourth system, measures 12-15. It features three staves: Flute (Fl.), Violin (V.), and Cello (Ch.).

- Flute (Fl.):** Starts with a dynamic marking of *mf*. The first measure contains a quarter note. The second measure contains a quarter note. The third measure contains a quarter note. The fourth measure contains a quarter note. The fifth measure contains a quarter note. The sixth measure contains a quarter note.
- Violin (V.):** Starts with a dynamic marking of *mf*. The first measure contains a quarter note. The second measure contains a quarter note. The third measure contains a quarter note. The fourth measure contains a quarter note. The fifth measure contains a quarter note. The sixth measure contains a quarter note.
- Cello (Ch.):** Starts with a dynamic marking of *mf*. The first measure contains a quarter note. The second measure contains a quarter note. The third measure contains a quarter note. The fourth measure contains a quarter note. The fifth measure contains a quarter note. The sixth measure contains a quarter note.

Handwritten annotations include a box labeled '15A' above the first measure of the Flute staff, and a circled '5' under the last measure of the Cello staff.

Handwritten musical score for Flute (Fl.), Violin (V), and Cello (Ch). The Flute part is in G major (one sharp) and 4/4 time. The Violin part is in 11/8 time. The Cello part is in 4/4 time. The music features complex rhythmic patterns and dynamic markings such as *ff* and *f*.

Handwritten musical score for Flute (Fl.), Violin (V), and Cello (Ch). This section is marked with **20A** and **25A**. It includes a 3+2+2 triplet in the Flute and Cello parts. The Flute part has the instruction *f come sopra*. The Cello part has dynamic markings *f* and *mp*, and includes a sequence of notes numbered (2) through (5).

Handwritten musical score for Flute (Fl.), Violin (V), and Cello (Ch). This section is marked with **30A**. It features a *mf* dynamic marking in the Flute part and a *mp* dynamic marking in the Cello part. The Cello part includes a sequence of notes numbered (6) through (10). A large watermark is present over this section.

Handwritten musical score for Flute (Fl.), Violin (V), and Cello (Ch). This section is marked with **35A** and **40A**. It features a *f* dynamic marking in the Flute part and a *f* dynamic marking in the Cello part. The Cello part includes a sequence of notes numbered (2) through (5).

45A

Fl.

V

Ch.

45A

50A

Fl.

V

Ch.

50A

55A

Fl.

V

Ch.

55A

60A

65A

Fl.

V

Ch.

60A

65A

**NB**  
 noter  
 This music is copyright protected

70A

Fl. *mf*

V. *p*

Ch.

75A

Fl.

V. *mp* *mf* *rit.*

Ch. *rit.*

Piu lento

80A

Fl.

V. *mp* *f* *rit. e decresc. al fine*

Ch. *rit. e decresc. al fine*

Fl.

V. *pp* *ppp* *pizz. (vibr.)* *pizz.* *ppp*

Ch.

Durata ca. 7'