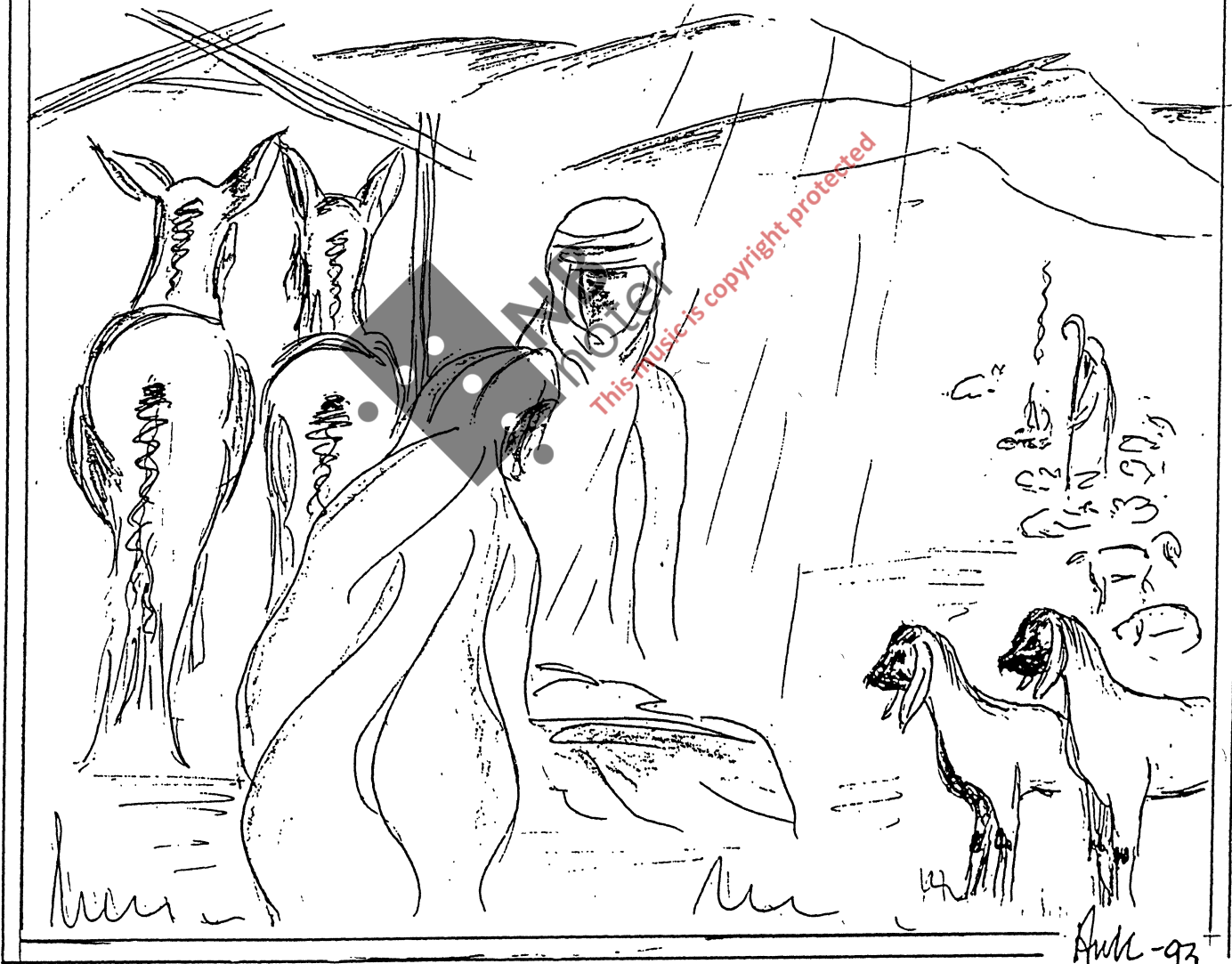


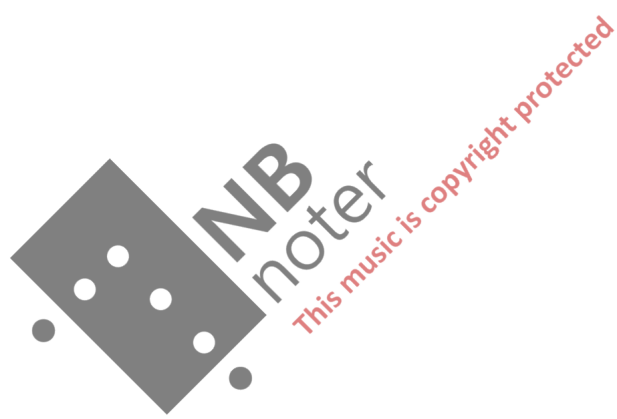
PARTITUR.
(Orkester.)

Joleoratorium.
(Anders Hovdem)

Musikk av
Amljet Hildeas

Opus 81.





Tilleg til min familie

dole oratorium.

(Text: Anders Horden)

Anders Horden

Andante (♩ = 69)

Fløjt

Obo

Clar. (B)

Fagott

Trompet (B)

Trombone

2 Horn (F)

S.

Bl. Kor A

T.

B

Solo

Violin 1

Violin 2

Viola

V. cello

C. Bass

Slagt

Handwritten musical score for a symphony orchestra and vocal soloist. The score is written on 20 staves, each with a 5-line staff and a clef. The instruments listed on the left are: Fl., Obo, Cl., Fag., Trp., Trombon, Horn, S., Bl. Kor A, T., B., Solo, Viol. 1, Viol. 2, Viola, V.c., C.B., and Slagt.

The vocal soloist part (S.) includes the following lyrics in Norwegian: "myr-ker dek-ker jod-di og myr-ker dek-ker jod-di og myr-ker dek-ker jod-di og myr-ker dek-ker jod-di og".

There is a large watermark in the center of the page that reads "INB noter" and "This music is copyright protected".

Fl.

Obo

Cl.

Fas

Trp.

Trombon

Horn

S

Bl. A

Kor

T

B

Solo

Vid. 1

Vid. 2

Viola

V.cello

C.B.

Slagv.

dim-ma tjo-da-ne.

dim-ma tjo-da-ne.

dim-ma tjo-da-ne.

dim-ma tjo-da-ne.

mp

mf

NBNB noter

This music is copyright protected

Handwritten musical score for a symphony orchestra and choir. The score is written on 20 staves, including parts for Flute (Fl.), Oboe (Obo), Clarinet (Cl.), Bassoon (Fag.), Trumpet (Tromp.), Trombone (Trombone), Horn (Horn), Bassoon (Bassoon), Bassoon (Bassoon), Bassoon (Bassoon), Solo (Solo), Violin I (VI), Violin II (VII), Viola (Viola), Violoncello (V.cello), Contrabass (C.B.), and Snare (Slag).

The vocal parts (Soprano, Alto, Tenor, Bass) have the following lyrics:

S: ar-grun-nen glöy-pa oss. Gud er det u-te med oss? Gud, er det u-te med oss
 A: ar-grun-nen glöy-pa oss. Gud er det u-te med oss? Gud, er det u-te med oss
 T: ar-grun-nen glöy-pa oss. Gud er det u-te med oss? Gud, er det u-te med oss
 B: ar-grun-nen glöy-pa oss. Gud er det u-te med oss? Gud er det u-te med oss

The score includes various musical notations such as clefs, time signatures, dynamics (e.g., *f*, *p*), and articulation marks. A large watermark "NMI 20-linjer" is visible across the center of the page.

Handwritten musical score for a symphony orchestra and vocal soloist. The score is written on 20 staves, including parts for Flute (Fl.), Oboe (Obo), Clarinet (Cl.), Bassoon (Fag.), Trumpet (Trombone), Horn (Horn), Soprano (S), Bass (B.), Solo (Solo), Violin 1 (Vid. 1), Violin 2 (Vid. 2), Viola (Viola), Violoncello (V. cello), Contrabass (C. B.), and Drums (Slagr.).

The vocal soloist part (S) includes the following lyrics:

nä-de, du her skapt oss, me er di-ne, me er di-ne, ein far, han yn-kest
 oss i nä-de, me er di-ne, me er di-ne, ein far, han yn-kest
 Her-re, sjä til oss i nä-de, me er di-ne, ein far, han yn-kest
 Her-re, sjä til oss, for me er di-ne, ein far, han yn-kest

The score includes dynamic markings such as *mf* (mezzo-forte), *mp* (mezzo-piano), and *anf* (an-forte). There is a large diagonal watermark across the center of the page that reads "This music is copyright protected".

Fl.

Obo

Cl

Fag. #coll

Trp.

Trombon

Horn

S

Bl. A

Krt. T

B

Ten. solo

Viol₁

Viol₂

Viola

V cello

CB

Slap

mf

mp

mp

mp

mp

Heil deg ma-ri-a, du hev fen-ge nå-de hjå Gud. Du skal få ein som og han skal ved-ta stod og

NB noter

This music is copyright protected

Fl.

Obo

Cl.

Fag.

Sop.

Trombe

Horn

S

Bl. Kor

A

T

B

Tenor-Solo

Viol. 1

Viol. 2

Viola

V.cello

C.B.

Slagt

INB noter
This music is copyright protected

kal - last som tie den hög - ste; han skal veg - ta kom - ge tie e - ve - lig tid!

Rec. Grotte Soprano

Fl. $\frac{2}{4}$ $\frac{3}{4}$ $\frac{2}{4}$ $\frac{3}{4}$ $\frac{2}{4}$ $\frac{3}{4}$

Obo $\frac{2}{4}$ $\frac{3}{4}$ $\frac{2}{4}$ $\frac{3}{4}$ $\frac{2}{4}$ $\frac{3}{4}$

Cl. $\frac{2}{4}$ $\frac{3}{4}$ $\frac{2}{4}$ $\frac{3}{4}$ $\frac{2}{4}$ $\frac{3}{4}$

Fag. $\frac{2}{4}$ $\frac{3}{4}$ $\frac{2}{4}$ $\frac{3}{4}$ $\frac{2}{4}$ $\frac{3}{4}$

Trp. $\frac{2}{4}$ $\frac{3}{4}$ $\frac{2}{4}$ $\frac{3}{4}$ $\frac{2}{4}$ $\frac{3}{4}$

Trombe $\frac{2}{4}$ $\frac{3}{4}$ $\frac{2}{4}$ $\frac{3}{4}$ $\frac{2}{4}$ $\frac{3}{4}$

Horn $\frac{2}{4}$ $\frac{3}{4}$ $\frac{2}{4}$ $\frac{3}{4}$ $\frac{2}{4}$ $\frac{3}{4}$

S $\frac{2}{4}$ $\frac{3}{4}$ $\frac{2}{4}$ $\frac{3}{4}$ $\frac{2}{4}$ $\frac{3}{4}$

Bl. kor A $\frac{2}{4}$ $\frac{3}{4}$ $\frac{2}{4}$ $\frac{3}{4}$ $\frac{2}{4}$ $\frac{3}{4}$

T $\frac{2}{4}$ $\frac{3}{4}$ $\frac{2}{4}$ $\frac{3}{4}$ $\frac{2}{4}$ $\frac{3}{4}$

B $\frac{2}{4}$ $\frac{3}{4}$ $\frac{2}{4}$ $\frac{3}{4}$ $\frac{2}{4}$ $\frac{3}{4}$

Rec. $\frac{2}{4}$ $\frac{3}{4}$ $\frac{2}{4}$ $\frac{3}{4}$ $\frac{2}{4}$ $\frac{3}{4}$

Con. Hest. $\frac{2}{4}$ $\frac{3}{4}$ $\frac{2}{4}$ $\frac{3}{4}$ $\frac{2}{4}$ $\frac{3}{4}$

Viol. 1 $\frac{2}{4}$ $\frac{3}{4}$ $\frac{2}{4}$ $\frac{3}{4}$ $\frac{2}{4}$ $\frac{3}{4}$

Viol. 2 $\frac{2}{4}$ $\frac{3}{4}$ $\frac{2}{4}$ $\frac{3}{4}$ $\frac{2}{4}$ $\frac{3}{4}$

Viola $\frac{2}{4}$ $\frac{3}{4}$ $\frac{2}{4}$ $\frac{3}{4}$ $\frac{2}{4}$ $\frac{3}{4}$

V.cello $\frac{2}{4}$ $\frac{3}{4}$ $\frac{2}{4}$ $\frac{3}{4}$ $\frac{2}{4}$ $\frac{3}{4}$

E. B. $\frac{2}{4}$ $\frac{3}{4}$ $\frac{2}{4}$ $\frac{3}{4}$ $\frac{2}{4}$ $\frac{3}{4}$

Slagv. $\frac{2}{4}$ $\frac{3}{4}$ $\frac{2}{4}$ $\frac{3}{4}$ $\frac{2}{4}$ $\frac{3}{4}$

Soprano solo:
 mf ma-ri-a, sva-rer og bryt ut i lov-sang. mf Et er Her-rens temnar, Lat det

Andantino (♩=69)

Handwritten musical score for a symphony orchestra and vocal soloist. The score is in 2/4 time and marked *Andantino* with a tempo of ♩=69. The instruments listed are Flute (Fl.), Oboe (Obo), Clarinet (Cl.), Bassoon (Fag), Trumpet (Trp), Trombone (Tromb), Horn (Horn), Saxophone (S), Bassoon (Bl. Kor A), Trombone (T), Bass (B), Soprano Soloist (Sopr. solo), Violin 1 (Viel. 1), Violin 2 (Viel. 2), Viola, Violoncello (V. cello), Contrabass (C.B.), and Snare Drum (Slap).

The vocal soloist part includes the following lyrics: "gå meg som du hev sagt. mi ånd hög-lo- var Her-ren, mit hjær-ta gled seg i".

The score features various musical notations including rests, triplets, and dynamic markings such as *mf*, *mp*, and *mp*. A large watermark "NB noter" and "This music is copyright protected" is overlaid on the score.

Fl.

Obo

Cl

Faq

Trp

Trombon

Horn

S

Bz. Kon

A

T

B

Sopran Solo

Viol. 1

Viol. 2

Viola

V. cell

CB

Slav

Gud, min Frel-sar, min Frel-sar. Han tenk-te pa si rim-ge möy, si rim-ge

NBNoter

This music is copyright protected

Fl.

Obo

Cl

Fag.

Trp.

Tromb.

Horn

S

Bl. A

Kor

T

B

Sop. solo

te- nest- möy. Her- et- tu vil al- le æt- tu pri- sa meg sal. Frå ætt til ætt haars

mp

mp

mp

mp

mp

C.B.

Slap

Fl.

Obo

Cl

Fag

Trp

Tromb

Horn

S
Kom. Född av möy i ar-mods dom. Hei-le ver-di un-- drast

A
Kom. Född av möy i ar-mods dom. Hei-le ver-di un- drast

T
Kom. Född av möy i ar-mods dom. Hei-le ver-di un- drast

B
Kom. Född av möy i ar-mods dom. Hei-le ver-di un- drast

Solo

Viol. 1

Viol. 2

Viola

V. Cell

C. B.

Slag

This music's copyright protected

Fl.

Obo

Cl.

Fag

Trp

Trmbon

Horn

S
pä, kvi du so-leis ko-ma mä.

A
päi kvi du so-leis ko-ma mä.

T
päi kvi du so-leis ko-ma mä.

B
päi kvi du so-leis ko-ma mä.

Solo
mf Forteljami: Hyr-din-ga-ne syng pä mar-ken.

Viel.₁

Viel.₂

Viel.

V. alb.

CB

Slap

Andante (♩ = 69)

Fl.

Obo

Cl.

Fag.

Trp.

Trombn

Horn

S

Bl. Kn A

T

B

Solo

Viol. 1

Viol. 2

Viola

V. cello

C. B.

Snare

Andante (♩ = 69)

mf

p

NB noter

This music is copyright protected

Moderato (♩ = 72)

Fl. Obo. Cl. Fag. Trp. Tamb. Hrn. S. A. T. B. Solo. Viol. 1. Viol. 2. Viola. V. cello. C.B. Slavn.

mp p p p p

mannskod.

So-li er slok-na, og da-gen dögur.
 So-li er slok-na, og da-gen dögur.
 So-li er slok-na, og da-gen dögur.
 So-li er slok-na, og dag-en dögur.

Fl.

Obo

cl.

Fag. *mf* *mp*

Trp.

Trombe

Horn *mp*

Manns-Kor.

Solo

Viol₁

Viol₂

Viola

V.cello

C.B.

Slap

NB noter
This music is copyright protected

Handwritten musical score for a symphony orchestra and choir. The score is written on 20-line staves. The instruments listed on the left are: Fl. (Flute), Obo, Cl. (Clarinet), Fag (Bassoon), Trp (Trumpet), Trombe (Trombone), Horn, Manns-Kor (Men's Choir), Solo, Viol 1, Viol 2, Viola, V.cello (Violoncello), C.B. (Cymbal), and Slagr (Drum). The lyrics for the choir are: "Land, vårt træl-ka folk, vårt træl-ka". The score includes various musical notations such as notes, rests, dynamics (f, mf), and articulation marks. A large watermark "NMB noter" is visible across the center of the page.

Fl.

Obo

Cl. *mf*

Fag.

Trp

Tromb.

Horn

Mans-
kor

folk.

Ljo- set frä di ä- sym, vän Her- re,

folk.

Ljo- set frä di ä- sym, vän Her- re,

folk.

Ljo- set frä di ä- sym vän Her- re,

folk.

Ljo- set frä di ä- sym vän Her- re,

Solo

Viol. 1

Viol. 2

Vika B♯d. *mf*

V.cello *mf*

C.b.

Slagt

Fl.

Obo

Cl. *f*

Fag.

Trp.

Trambon

Horn

Manns-
Kor

Solo

Viol₁

Viol₂

Viola

V.cello

C.B.

Slager

Ljo-set fra di
 ä- sym, vär
 Her- re, vär
 Her-

Ljo-set fra di
 ä- sym, vär
 Her- re, vär
 Her-

Ljo-set fra di
 ä- sym, vär
 Her- re, vär
 Her-

Ljo-set fra di
 ä- sym, vär
 Her- re, vär
 Her-

This music is copyright protected

Andante (♩ = 69)

Handwritten musical score for a symphony orchestra. The score is written on 20 staves, each labeled with an instrument. The tempo is marked 'Andante' with a quarter note equal to 69 beats per minute. The time signature is 3/4. The key signature has one sharp (F#). The score is divided into four measures by vertical bar lines. The instruments and their parts are as follows:

- Fl.**: Flute, rests in all measures.
- Obo**: Oboe, rests in all measures.
- Cl.**: Clarinet in B-flat, rests in all measures.
- Fag**: Bassoon, plays a melodic line starting in the second measure with a dynamic marking of *mp*.
- Trp.**: Trumpet, rests in all measures.
- Trombon**: Trombone, rests in all measures.
- Horn**: Horn, rests in all measures.
- Manuss-kr**: Muntass-kor (Muntass-kor), rests in all measures.
- kr**: Kor, rests in all measures.
- kr**: Kor, rests in all measures.
- kr**: Kor, rests in all measures.
- Solo**: Solo instrument, rests in all measures.
- Viol. 1**: Violin 1, rests in all measures.
- Viol. 2**: Violin 2, rests in all measures.
- Viola**: Viola, rests in all measures.
- V.cello**: Violoncello, rests in all measures.
- C.B.**: Kontrabaas, rests in all measures.
- Slay**: Slagwerk, rests in all measures.

A large watermark 'NB noter' is visible across the center of the page, with the text 'This music is copyright protected' written diagonally below it.

Handwritten musical score for orchestra and vocal soloist. The score is written on 20-line staves. The instruments listed are Flute, Oboe, Clarinet, Bassoon, Trumpet, Trombone, Horn, Saxophone, Bassoon, Bass, Violin 1, Violin 2, Viola, Violoncello, Double Bass, and Drums. The vocal soloist part is marked 'Sopranosolo:'. The lyrics are in Swedish: 'mf Ein stem-me höyd-dest för him-me-len! amp Vær-ik-kje ned-de!'.

The score is divided into two systems. The first system contains measures 1-4, and the second system contains measures 5-8. The time signature is 2/4. The key signature has one flat (B-flat). The vocal soloist part begins in measure 5 with the lyrics 'Sopranosolo: amp Vær-ik-kje ned-de!'.

Watermark: NMB noter. This music is copyright protected.

Fl. Obo Cl. Fag. Trp. Trombone Horn Kor

Sopr. Solo

Sia eg for-kym-mer dykk ei stor gle-da som skal ti-mast, ja, ti-anast alt

Viol. 1 Viol. 2 Viola V. cello C.B. Slagv.

mf *mf* *mf* *mf*

This music is copyright protected

Fl.

Obo

Cl

Fag.

Trp

Trombø

Horn

S

Bl. Kor A

T

B

Solo

Viol. 1

Viol. 2

Viola

V.celli

C.B.

son, og da vår bro- der sann ein Her- re til Guds æ-

son, og da vår bro- der sann, ein Her- re til Guds æ-

son, og da vår bro- der sann ein Her- re til Guds æ-

son, og da vår bro- der sann, ein Her- re til Guds æ-

Handwritten musical score for page 35, featuring vocal parts (Soprano, Alto, Tenor, Bass, Solo) and instrumental parts (Flute, Oboe, Clarinet, Bassoon, Trumpet, Trombone, Horn, Violins, Viola, Violoncello, Double Bass). The lyrics are in Norwegian and German. A watermark 'NMI noter' is visible across the center.

Fl.
Ob.
Cl.
Fag.
Trp.
Tromb.
Horn
S.
Bl.
Kor A
T.
B.
Solo
Viol. 1
Viol. 2
Viola
V. cello
C. B.

mf
ra, no er han född i Davids stads stad den som som
ra, no er han född i Da- vids stad den som som
ra, no er han född i Da- vids stad den som som
ra, no er han född i Da- vids stad den som som

mf
mf
mf
mf
mf

Handwritten musical score for page 37. The score includes parts for Flute (Fl.), Oboe (Obo), Clarinet (Cl), Bassoon (Fag), Trumpet (Tup), Trombone (Trombon), Horn (Horn), Soprano (S), Alto (A), Tenor (T), Bass (B), Solo, Violin 1 (Viol 1), Violin 2 (Viol 2), Viola, Violoncello (V. cello), Double Bass (e. b.), and Drums (Slag). The vocal parts (S, A, T, B) have lyrics in Swedish: "eng-la-me til-bad vel-sig-na stödt skal væ-". The instrumental parts include woodwinds, brass, strings, and percussion. The score is written in a major key with a 4/4 time signature. A large watermark "NMI 20-linjer" is visible across the center of the page.

Handwritten musical score for a symphony orchestra and vocal soloist. The score is written on 20 staves. The instruments listed on the left are: Fl., Oboe, Clarinet, Bassoon, Trumpet, Trombone, Horn, Soprano (S), Alto (A), Tenor (T), Bass (B), Solo, Violin 1, Violin 2, Viola, Violoncello (V. cello), Contrabass (C. B.), and Snare Drum (Slagr).

The vocal parts (S, A, T, B) have the following lyrics: *ra. Min sjel, kjem vel, dem-ne nå-de,*

The Solo part has the following lyrics: *ra. Min sjel, kjem vel, dem-ne nå-de*

The score includes dynamic markings such as *mf* (mezzo-forte) and *f* (forte). The music is in a key signature of two sharps (D major) and a common time signature (C). The notation includes various note values, rests, and articulation marks.

Fl

Obo

Cl

Fag

Trp

Tromb

Horn

S
fri från vä- de, lat ditt au- go, i hans mor- gon-

Al
fri från vä- de, lat ditt au- go, i hans mor- gon-

T
fri från vä- de, lat ditt au- go, i hans mor- gon-

B
fri från vä- de, lat ditt au- go, i hans mor- gon-

Solo

Viol. 1

Viol. 2

Viola

V.cello

C.B

Snare

Handwritten musical score for a full orchestra and vocal soloist. The score is written on 20 staves. The instruments listed on the left are: Flute, Oboe, Clarinet, Bassoon, Trumpet, Trombone, Horn, Soprano (S), Baritone (B), Bass (B), Soloist (Solo), Violin 1, Violin 2, Viola, Cello, Double Bass (C.B.), and Piano (Plyg).

The score is in the key of D major (two sharps) and 3/4 time. It features a vocal soloist part with lyrics in Norwegian: "Ljos seg Lau - ga." and "Hjer-dia-ga-me vil til Bet-le-hem." The tempo is marked *mf* (mezzo-forte). The score includes various musical notations such as notes, rests, and dynamic markings.

A large watermark "NMI 20-linjer" is visible across the center of the page, along with a red diagonal watermark that reads "this music is copyright protected".

Allegretto (♩=88)

Fl.

Oboe

Cl.

Fag.

Trp.

Trombe

Horn

Tim 1

Trums-
Kor
Tim 2

B1

B2

Solo

Viol. 1

Viol. 2

Viola

V.Celli

C.B.

Strav.

mf

mf

mf

Handwritten musical score for a symphony orchestra and vocal soloist. The score is written on 20 staves, including parts for Flute, Oboe, Clarinet, Trumpet, Trombone, Horn, Trombone 1, Soprano, Bass 1, Bass 2, Solo, Violin 1, Violin 2, Viola, Violoncello, Contrabass, and Snare Drum. The music is in G major and 4/4 time. The vocal soloist part includes the lyrics: "Kom, lat oss gå til Bet-le-hem, til Bet-le-hem, Kom, lat oss gå til Bet-le-hem, til Bet-le-hem." The score includes dynamic markings such as *mf* and *a tempo*. A large watermark "NMI noter" is visible across the center of the page.

Fe.
Obo
Cl.
Fag.
Tromp.
Trombone
Horn
T₁
Manns
Kv.
B₁
B₂
Solo
Viol.₁
Viol.₂
Viola
V.cello
C.B.
Slagr

Lag åt Frel-sa-nen som er född oss i-dag! Ja, Kom lat oss gå, Kom Lat oss
 Lag åt Frel-sa-nen som er född oss i-dag! Ja, Kom lat oss gå, Kom Lat oss
 Lag åt Frel-sa-nen som er född oss i-dag! mf Kom Lat oss gå,
 Lag åt Frel-se-amen som er född oss i-dag! Kom lat oss gå, mf

mf
mf
mf
mf

Handwritten musical score for a symphony orchestra and vocal soloist. The score is written on 20 staves, each with a label on the left side. The instruments and parts are: Fl. (Flute), Oboe, Cl. (Clarinet), Fag. (Bassoon), Trp. (Trumpet), Trombe (Trombone), Horn, T₁ (Tenor 1), Männs (Men's voices), K₁ T₂ (Kor Tenor 2), B₁ (Bass 1), B₂ (Bass 2), Solo (Soloist), Viol₁ (Violin 1), Viol₂ (Violin 2), Viola, V. cello (Violoncello), C. B. (Cello/Bass), and Slagu. (Snare drum). The score is divided into four measures. The vocal parts have lyrics in Swedish: "gå, Kom, me vil sjä, Kom, me vil sjä!". The music includes various dynamics (mf, f, rit., a tempo) and tempo markings. A large watermark "NBI" is visible across the center of the page, with the text "This must be copyright protected" written diagonally across it.

Handwritten musical score for a symphony orchestra. The score is written on 20 staves, each labeled with an instrument or voice part. The parts include Flute (Fl.), Oboe (Obo), Clarinet (Cl), Bassoon (Fag), Trumpet (Trp), Trombone (Trombone), Horn (Horn), Trombone I (T1), Trombone II (T2), Bass I (B1), Bass II (B2), Solo (Solo), Violin I (Viol. 1), Violin II (Viol. 2), Viola, Violoncello (V. cello), Contrabass (C.B.), and Snare Drum (Slav). The score is in G major (one sharp) and 3/4 time. It features various musical notations such as notes, rests, slurs, and dynamic markings like 'rit.' and 'mf'. A watermark 'NB noter' is visible in the center, along with the text 'This music is copyright protected'. At the bottom right of the Solo part, there is a section titled 'Forteljen!' with the lyrics 'Tri vi-se meann'.

Fl.

Obo

Cl.

Fag

Trp

Trombe

Horn

Mamm-
Kor

Tenor
Solo

Viol.
1

Viol2

Viola

C. Cello

C.B.

Slagr

född, me så hams, stjer-na, dem shä-lan-de! klä-re, Lem-ge ly-sa i lan-di

mf

mp

mf

mf

mf

mf

Handwritten musical score for a symphony orchestra and vocal soloist. The score is written on 20 staves. The instruments listed on the left are: Fl, Obo, Cl, Fas, Trp, Trombone, Horn, Tromms Køl, Tenor-solo, Violin 1, Violin 2, Viola, V. cello, C. B., and Slav.

The music is in the key of D major (two sharps) and 2/4 time. The score begins with a double bar line. The vocal soloist part includes the lyrics: "al-di me säg slik ein stjer-me-glaans på him-mel-". The instrumental parts include dynamic markings such as *mf* and *f*.

A large watermark "NMI 20-linjer" is visible across the center of the page, along with a smaller red watermark "this music is copyright protected".

Fl.

Obo

Cl.

Fag

Trp

Tromb

Horn

Männ.
Kor

Solo

Viol₁

Viol₂

Viola

V. cell

C. B.

Org.

Kvel- vem som stjer- na hans, nei, al- dri me så slik ein stjer- me- glans på
 Kvel- vem som stjer- na hans, nei, al- dri me så slik ein stjer- me- glans på
 Kvel- vem som stjer- na hans, nei, al- dri me så slik ein stjer- me- glans på
 Kvel- vem som stjer- na hans, nei, al- dri me så slik ein stjer- me- glans på

Handwritten musical score for a symphony orchestra and choir. The score includes parts for Flute, Oboe, Clarinet, Bassoon, Trumpet, Trombone, Horn, Male Choir, Solo, Violin 1, Violin 2, Viola, Violoncello, Contrabass, and Organ. The lyrics are in Norwegian and describe a star's glory. The music is in a key with one sharp (F#) and a 2/4 time signature. Dynamics include 'f' (forte) and 'f+' (fortissimo).

Handwritten musical score for a symphony orchestra and vocal soloist. The score is written on 20 staves. The instruments listed on the left are: Fl., Oboe (Ob.), Clarinet (Cl.), Bassoon (Fag.), Trumpet (Trp.), Trombone (Tromb.), Horn, Chorus (Manns-kor), Solo, Violin 1 (Viol₁), Violin 2 (Viol₂), Viola, Violoncello (V. cello), Contrabass (C. B.), and Snare Drum (Slap).

The score includes various musical notations such as notes, rests, and dynamic markings. Key markings include *a tempo*, *mf*, *rit.*, and *mf*. The lyrics for the vocal soloist are: "him-mel-kuel-ven som stjer - - na hans." repeated across four staves.

A large watermark "NB noter" is visible across the center of the page, with the text "This music is copyright protected" written diagonally across it.

Handwritten musical score for a symphony orchestra and choir. The score includes parts for Flute (Fl.), Oboe (Ob.), Clarinet (Cl.), Bassoon (Fag.), Trumpet (Tromp.), Trombone (Trombone), Horn (Horn), and Solo. The vocal parts are labeled "Manns-Kor" (Men's Choir) and "Solo". The music is in G major and 4/4 time. The score features dynamic markings such as *rit* (ritardando) and *mf* (mezzo-forte). A tempo change is indicated by "Koraltempo" (Choral tempo). The lyrics are in Norwegian: "Her kjem me di- ne ar- me små, vår".

Fl. *rit*

Ob. *rit*

Cl. *rit*

Fag. *rit*

Tromp. *mf*

Trombone *rit*

Horn *rit*

Manns-Kor

Solo *mf*

Viol. 1 *rit.* *mf*

Viol. 2 *rit.* *mf*

Viola *rit.* *mf*

V.cello *rit.* *mf*

C.B. *rit.* *mf*

Slag *mf*

Koraltempo

Bl. Kor. *mf*

Her kjem me di- ne ar- me små, vår

Her kjem me di- ne ar- me små, vår

Her kjem me di- ne ar- me små, vår

Her kjem me di- ne ar- me små, vår

Fl.

Obo

Cl.

Fag

Trp

Trombone

Horn

Bl.

Kor

Sopran Solo

Viol. 1

Viol. 2

Viola

V. cello

E. B.

Slag v

mp

mp

mp

Dei vi-se menn dei gær i gje-nom net-ti (ogm og)

NB noter

This music is copyright protected

Detailed description: This is a page of a musical score, page 57. It features a grand staff with 15 staves. The instruments listed on the left are Flute (Fl.), Oboe (Obo), Clarinet (Cl.), Bassoon (Fag), Trumpet (Trp), Trombone, Horn, Brass (Bl.), Choir (Kor), Soprano Soloist (Sopran Solo), Violin 1 (Viol. 1), Violin 2 (Viol. 2), Viola, Violoncello (V. cello), Double Bass (E. B.), and Snare Drum (Slag v). The Soprano Soloist part includes lyrics in Norwegian: "Dei vi-se menn dei gær i gje-nom net-ti (ogm og)". The score includes dynamic markings such as "mp" (mezzo-piano) and "mp" (piano). A large watermark "NB noter" and "This music is copyright protected" is overlaid on the score.

Handwritten musical score for a symphony orchestra and vocal soloist. The score is written on 20 staves. The instruments listed on the left are: Fl. (Flute), Oboe, Cl. (Clarinet), Fag. (Bassoon), Trp. (Trumpet), Trombone, Horn, Bl. kor. (Woodwinds), Sopran solo (Soprano soloist), Viol. 1, Viol. 2, Viola, V. cell. (Violoncello), C.B. (Contra Bass), and Slavn. (Timpani).

The vocal soloist part includes the following lyrics: "Jei karub-be-seng på strå, for dei Je-sus-bar-net sjä." The lyrics are written below the vocal line.

The score includes various musical notations such as notes, rests, dynamics (mp, f), and articulation marks. A large watermark "NB noter" is visible across the center of the page, with the text "This music is copyright protected" written diagonally below it.

Fl. mp

Obo

Cl.

Fag

Trp

Trombe

Horn

Manns-
Kor

Sopran-
solo

Viol.

Viol.

Viola mp

V.cello mp

C.B. mp

ves-le skun, det tron-ge rom var fylt av him-melsk her-leg-dom. Dei

NBNB noter
This music is copyright protected

Fl.

Obo

Cl

Fag

Trp

Trombone

Horn

Mans-
Kor

Soprano-
Solo

Viol₁

Viol₂

Viola

V. cello

C.B.

Slagt

bar fram gå- vor al- le tre, og tak- ka Gud, og fell på kne, og

Handwritten musical score for a symphony orchestra. The score is written on 20 staves, each labeled with an instrument or voice part. The parts include Flute (Fl.), Oboe (Obo), Clarinet (Cl), Bassoon (Fag), Trumpet (Trp), Trombone (Trombon), Horn (Horn), Piano (Piano), Violin 1 (Viol 1), Violin 2 (Viol 2), Viola, Violoncello (V.cello), Double Bass (P.B.), and Snare Drum (Slayt). The score is divided into four measures by vertical bar lines. The tempo is marked "a tempo" at the beginning of the second measure. The key signature has one sharp (F#). The first violin part includes the lyrics "tak- Ka Gud på kore." and dynamic markings "rit", "mf", and "rit". The second violin part has dynamic markings "rit" and "mf". The cello and double bass parts also have dynamic markings "rit" and "mf". A large watermark "INB noter" is visible across the center of the page, with the text "This music is copyright protected" written diagonally below it.

Handwritten musical score for a symphony orchestra. The score is written on 20 staves, each labeled with an instrument or voice part. The instruments listed are Flute (Fl.), Oboe (Obo), Clarinet (Cl.), Trumpet (Trag), Trombone (Trop), Tambourine (Tambora), Horn (Horn), Mamm (Mamm), Kori (Kori), Violin 1 (Viol. 1), Violin 2 (Viol. 2), Viola, Violoncello (V.cello), Contrabass (C.B.), and Schlagzeug (Schlag). The score is divided into measures by vertical bar lines. The Oboe and Viola parts have a 'rit.' (ritardando) marking. The Violoncello and Contrabass parts have a 'rit' marking. The Soprano Solo part has lyrics: 'auf der steiften Erde' and 'Farkelgauer'. A large watermark 'NB noter' and 'This music is copyright protected' is overlaid on the score. The page number '66' is in the top right corner.

Modérato (♩ = 69)

Fl. Obo Cl. Fag. Trp. Trombon. Horn Bl. Kr. Gen. Hest. Viol. 1 Viol. 2 Viola V. cello C.B. Slap

sa til He-ro-des: Bet-le-hem i Da-vids by skal stjer-na

mp

Bl.kor

NB noter

This music is copyright protected

Fl.

Obo

Cl.

Fag

Trp

Trombone

Horn

Bl. Kor

Tempo Solo

Viol. 1

Viol. 2

Viola

V. cello

C. B.

Slagt

shä-la fram on sky, den hei-le heim-sens fräl-se-von, mes-si-as, mes-

NB noter
This music is copyright protected

Allegretto (♩=108)

Handwritten musical score for a symphony orchestra and choir. The score is divided into two systems by a double bar line. The instruments listed are Flute (Fl.), Oboe (Obo), Clarinet (Cl.), Bassoon (Fag), Trumpet (Timp.), Trombone (Tromb.), Horn (Horn), Violin I (Viel 1), Violin II (Viel 2), Viola, Violoncello (V.cello), Contrabass (C.B.), and Double Bass (Bass). The vocal parts include Soprano (S), Alto (A), Tenor (T), Bass (B), and a Soloist (Solo).

The key signature is one sharp (F#) and the time signature is common time (C). The tempo is marked "Allegretto" with a quarter note equal to 108 beats per minute. The dynamic marking is *mf* (mezzo-forte).

The lyrics for the vocal parts are: "He-ro-des er kom-ge og He-ro-des er kom-ge og He-ro-des er kom-ge og He-ro-des er kom-ge og".

The Soloist part has the lyrics: "si-as, Guds ein-bod-ne som".

The score includes various musical notations such as rests, notes, slurs, and dynamic markings. There is a large watermark in the center of the page that reads "NMI notes" and "This music is copyright protected".

Fl.

Obo

Cl

Fag.

Trp

Tromb

Horn

S

Bl. A

Kri.

T

B

Solo

Viola 1

Viola 2

Viola

V. cell

C. B.

Slapp

Kjen-ner seg stod. Men so fer ham høy- ra det skre-mam-de ord:
 Kjen-ner seg stod. Men so fer ham hög- ra det skre-mam-de ord:
 Kjen-ner seg stod. Men so fer ham hög- ra det skre-mam-de ord:
 Kjen-ner seg stod. Men so fer ham hög- ra det skre-mam-de ord:

Fl.

Obo

Cl.

Fag

Trp

Trombø

Horn

S

Bl. Kor

A

T

B

Bass-
solo

Viol.
1

Viol.
2

Viola

V.cello

C. B.

Slagr.

gu-ta-ne al-le skal mis-sa sitt liv. Ja, tak deim og drep deim! ja, tak deim og

Handwritten musical score for a symphony orchestra and vocal soloist. The score is written on 20-line staves. The instruments listed on the left are: Fl., Oboe, Clarinet (Cl), Bassoon (Fag), Timpani (Timp), Trombone, Horn, Bassoon (Bl.), Trumpet (T), Bass (B), Bass Solo, Violin 1 (Vial. 1), Violin 2 (Vial. 2), Viola, Violoncello (V. cello), Contrabass (C.-B.), and Snare Drum (Slagvr).

The score is divided into four measures. The first measure contains the vocal soloist's lyrics: "drep deim, ja, drep, drep, drep um so dei sit". The second measure contains the lyrics: "soni-land på no-de-nens". The third measure contains the lyrics: "arm. Han". The fourth measure is empty.

The music is written in a key signature of one flat (B-flat) and a common time signature (C). The notation includes various musical symbols such as notes, rests, accidentals, and dynamic markings like *f* and *arm.* (piano). There is a watermark in the center of the page that reads "NB noter" and "this music is copyright protected".

Fl.

Obo

Cl

Fag

Trp

Trombone

Horn

S

Bl.
Kor A

T

B

Tenor Solo

Viol. 1

Viol. 2

Viola

V. cello

CB

slagt

byd i sin harm, i sin, harm. f Fol-ket jam--rav seg og gret un--der fra-- mandt

Forteljæven:

NB noter
this music is copyright protected

Fl.

Obo

Cl.

Fas.

Trp

Trombe

Horn

S

ut-veg og ber-ging å sjå? Det li- vet som veks og stand

Bl. Kl. A

ut-veg og ber-ging å sjå? Det li- vet som veks og stand

T

ut-veg og ber-ging å sjå? det li- vet som veks og stand

B

ut-veg og ber-ging å sjå? Det li- vet som veks og stand

Solo

Viol. 1

Viol. 2

Viola

V. cello

C. B.

Slapp

The image shows a handwritten musical score for page 80. It consists of 15 staves. The top five staves are for woodwinds: Flute (Fl.), Oboe (Obo), Clarinet (Cl.), Bassoon (Fas.), and Trumpet (Trp). The next five staves are for brass: Trombone (Trombe), Horn, and Solo. The vocal parts include Soprano (S), Alto (Bl. Kl. A), Tenor (T), and Bass (B). The lyrics for the vocal parts are: "ut-veg og ber-ging å sjå? Det li- vet som veks og stand". The bottom five staves are for strings: Violin 1 (Viol. 1), Violin 2 (Viol. 2), Viola, Violoncello (V. cello), and Contrabass (C. B.). There is also a staff for Slapp (Slap) at the bottom. A large watermark "NBI noter" is visible across the center of the page, along with the text "this music is copyright protected".

Fl

Obo

Cl.

Fag

Trp

Trombone

Horn

S

Bl. Kor A

B

Solo

Viol 1

Viol. 2

Viola

V. cello

C. B

Slagr

fa-gert og raudt, det gul-nar og vis-mar og smart er det

fa-gert og raudt, det gul-nar og vis-mar og smart er det

fa-gert og raudt, det gul-nar og vis-mar og smart er det

fa-gert og raudt, det gul-nar og vis-mar og smart er det

Fl.

Obo

Cl.

Fag

Trp

Trombone

Horn

S

Bl. *mf*
daudt. Den ster- kas- te giv- na- den bleik- mar smart av, i

Kod A
daudt. Den ster- kas- te giv- na- den bleik- mar smart av, i

T
daudt. Den ster- kas- te giv- na- den bleik- mar smart av, i

B
daudt. Den ster- kas- te giv- na- den bleik- mar smart av, i

Solo *mf*
daudt. Den ster- kas- te giv- na- den bleik- mar smart av, i

Viol. 1 *mf*

Viol. 2 *mf*

Viola *mf*

V. cello *mf*

C. B. *mf*

Slegel

Fl.

Obo

Cl

Fag

Trp.

Trombone

Horn

S

M

Bl.

Kv

B

Viol. 1

Viol. 2

Viola

V.cello

C. B

Slagr

me blö'n un-der tryk av fad-mant vel-de, eit u--

mp

mf

mp

mp

mp

mp

NB noter

This music is copyright protected

Fl.

Obo

Cl

Fag

Trp

Trombone

Horn

S

Bl.
Kor A

T

B

Tenn-
Solo
fuit land, eit træl-ka folk. me lyt fer-dest mil-loom dei som

Viol. 1

Viol. 2

Viola

V.cello

C.B

Slagn

mp

p

NMB noter
This music is copyright protected

Fl.

Obo

Cl

Fag

Trp

Frambu

Horn

S

Bl. Krl A

T

B

Tenn. solo
spru- tar eld, mil- loe men- ne- skje som til, ten- nev hev spjot og

Viol. 1

Viol. 2

Viola

Cello

C.B.

Drqv.

mp

NB noter
This music is copyright protected

Handwritten musical score for orchestra and voices. The score is written on 20-line staves. The instruments listed are Flute (Fl.), Oboe (Obo), Clarinet (Cl.), Bassoon (Fag), Trumpet (Trop.), Trombone (Trombon), Horn, Soprano (S), Alto (A), Tenor (T), Bass (B), Tenor Solo (Tenor Solo), Violin I (Viol. I), Violin II (Viol. II), Viola, Violoncello (V. cello), Contrabass (C. B.), and Snare Drum (Slagt).

The score is divided into four measures. The first measure contains the beginning of the piece. The second measure contains the vocal entry with the lyrics: "qi-lar og til tun-gar kvas-se sverd." The third and fourth measures contain the vocal phrase "Her-re," repeated by different voice parts. The tempo marking "a tempo" is written above the vocal staves in the third and fourth measures. The dynamic marking "mf" (mezzo-forte) is written above the vocal staves in the first and second measures. The dynamic marking "mp" (mezzo-piano) is written below the string staves in the second and third measures. The tempo marking "rit" (ritardando) is written below the string staves in the second and third measures. The dynamic marking "ant" (ante) is written below the string staves in the third measure. The dynamic marking "mf" is written below the Violin I staff in the third measure. The dynamic marking "mf" is written below the Violoncello staff in the third measure. The dynamic marking "mf" is written below the Contrabass staff in the third measure. The dynamic marking "mf" is written below the Snare Drum staff in the third measure.

A large watermark "NMB noter" is visible across the center of the page, with the text "This music is copyright protected" written diagonally across it.

Fl.

Obo

Cl

Fag.

Trp

Tromb.

Horn

Bl. Sol.

Viol₁

Viol₂

Viola

V. cello

C. B.

Slagn

giøv den ned-tyng-de rett, ja, du giøv den ned-tyng-de rett. y di-ne hen-der me

giøv den ned-tyng-de rett, ja, du giøv den ned-tyng-de rett. y di-ne hen-der me

giøv den ned-tyng-de rett, ja, du giøv den ned-tyng-de rett. y di-ne hen-der me

giøv den ned-tyng-de rett, ja, du giøv den ned-tyng-de rett. y di-ne hen-der me

mf

f

mf

mf

mf

mf

Fl.

Obo. *trane*

Cl.

Fag.

Trp.

Trombae

Horn

S.

A.

Bl. Kon. T.

B.

Solo

Viol. 1

Viol. 2 *rit*

Viola *rit*

V. cello *rit*

C. B. *rit*

Slapn

NB noter
this music is copyright protected

Fl.

Obo

Cl

Fag.

Sop.

Trombe

Horn

S

Bl. Kor

T

B

Solo

Viol₁

Viol₂

Viola

V. cello

C. B.

Slagv

Fonteljäran: *mf* Da högn-dest ein sterk röyst frä him-me-len *f*

Fl.

Obo

Cl

Fag.

Trp

Tromb

Horn

Perc.

Bl. Kor

T

B

Sopran Solo

Viol 1

Viol 2

Viola

V. cello

C. B

Slagr

trou på ham ik-kje skal for- ta- past, men ha det e- vi-ge liv, det e- vi-ge

NB noter
This music is copyright protected

Royal tempo:

Fl.
 Obo
 Cl.
 Fag.
 Trp
 Trombone
 Horn
 S.
 Bl. Kor
 T.
 B.
 Sopran solo
 Viol. 1
 Viol. 2
 Viola
 V. cello
 C. B.
 Slagr.

Det hev ei ro-sa sprun-ge ut av ei rot so gramn. Som
 Det hev ei ro-sa sprun-ge ut av ei rot so gramn. Som
 Det hev ei ro-sa sprun-ge ut av ei rot so gramn. Som
 mf Det hev ei ro-sa sprun-ge ut av ei rot so gramn. Som
 mf
 mf
 mf
 mf
 mf
 mf

liv!

Fl.

Obo

Cl
mf

Fag.

Trp

Tromb.

Horn
mf

1s
2s
1A
2A
Solo
mf

Viol₁

Viol₂
mf

Viola
mf

V.cello
mf

C.B.
mf

Slagr.

œ-ra ve-re Gud i det hög-~~ste~~ ste. fred på jor-di, ja, fred på jor-di.
œ-ra ve-re Gud i det hög-~~ste~~ ste. fred på jor-di, ja, fred på jor-di.
œ-ra ve-re Gud i det hög-~~ste~~ ste, og fred på jor-di, ja, fred på jor-di.
œ-ra ve-re Gud i det hög-~~ste~~ ste, og fred på jor-di, ja, fred på jor-di.

This music is copyright protected

Handwritten musical score for a symphony orchestra and vocal soloist. The score is written on 20 staves, each with a clef and instrument label. The instruments are: Flute (Fl.), Oboe (Ob.), Clarinet (Cl.), Bassoon (Fag.), Trumpet (Trp.), Trombone (Tromb.), Horn (Horn), Violin I (Viel. 1), Violin II (Viel. 2), Viola (Viola), Violoncello (V. cello), Contrabass (C. B.), and Snare Drum (Slagn).

The vocal soloist part (S1) includes the following lyrics in Danish: "æ-na ve-re Gud, og fred på jor-di, fred på jor-di, ja, fred! Og hug-nad med æ-na ver-e Gud, og fred på jor-di, fred på jor-di, ja, fred! Og hug-nad med æ-na ve-re Gud, og fred, ja, fred på jor-di, ja, fred! Og hug-nad med æ-na ver-re Gud, og fred, ja, fred på jor-di, ja, fred! Og hug-nad med".

The score includes various musical notations such as notes, rests, slurs, and dynamic markings (mp, mf, f, mf). A large watermark "Musiknoter" is visible across the center of the page.

Roc al fompill...

Fl. $\text{G}^{\#} \frac{6}{4}$ ϵ

Obo $\text{G}^{\#} \frac{6}{4}$ ϵ

Cl. $\text{G}^{\#} \frac{6}{4}$ ϵ

Fag $\text{G}^{\#} \frac{6}{4}$ ϵ

Trp. $\text{G}^{\#} \frac{6}{4}$ ϵ

Trambone $\text{G}^{\#} \frac{6}{4}$ ϵ

Horn $\text{G}^{\#} \frac{6}{4}$ ϵ

S $\text{G}^{\#} \frac{6}{4}$ ϵ

Bl. Ur $\text{G}^{\#} \frac{6}{4}$ ϵ

T $\text{G}^{\#} \frac{6}{4}$ ϵ

B $\text{G}^{\#} \frac{6}{4}$ ϵ

Solo $\text{G}^{\#} \frac{6}{4}$ ϵ

Viol₁ $\text{G}^{\#} \frac{6}{4}$ ϵ

Viol₂ $\text{G}^{\#} \frac{6}{4}$ ϵ

Viola $\text{G}^{\#} \frac{6}{4}$ ϵ

V.cello $\text{G}^{\#} \frac{6}{4}$ ϵ

C.B. $\text{G}^{\#} \frac{6}{4}$

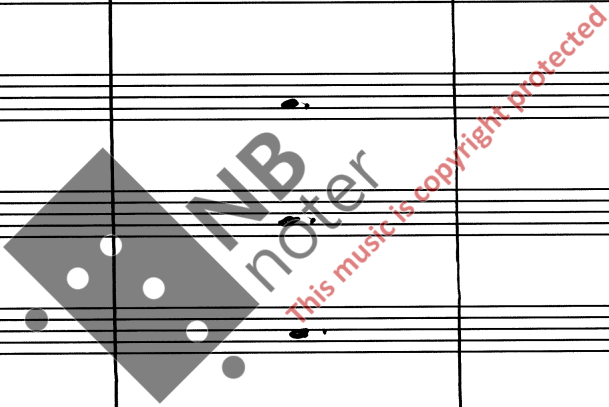
Slapn $\text{G}^{\#} \frac{6}{4}$

Canon in oct. + per Augm.

mf

mf

mf



Fl.

Obo

Cl.

Fag.

Trp

Saxophone

Horn

S

B.

W.

T.

B.

Solo

Viol.

Viol. 2

Viola

V. cello

C. B.

Snare

NBNB noter
This music is copyright protected

Fl.

Obo

Cl.

Fag.

Trp

Trumbone

Horn

S

A

Bl. Kor

T

B

Solo

Viol. 1

Viol. 2

Viola

V. cello

C. B.

Slagv.

Ljos og stjer-ne-eld, no syng Guds born med sag-nad um

Ljos og stjer-ne-eld, no syng Guds born med sag-nad um

Ljos og stjer-ne-eld, no syng Guds born med sag-nad um

Ljos og stjer-ne-eld, no syng Guds born med sag-nad um

Fl.

Obo

Cl.

Fag

Trp

Trmbone

Korn

S

A

T

B

Solo

Viol. 1

Viol. 2

Violon

V. cello

C. B.

Slagv.

Krist i vå-re kär, med pri-sa kan vår lag-nad fod

Krist i vå-re kär, med pri-sa kan vår lag-nad, fod

Krist i vå-re kär, me pri-sa kan vår lag-nad, fod

Krist i vå-re kär, me pri-sa kan vår lag-nad, fod

Fl.

Obo

Cl.

Fag.

Trp

Trubne

Horn

S

Del. A

Kor

B

Solo

Viol. 1

Viol. 2

Viola

V.cello

C.B.

Slav

Gud er Fa-der vår. "å, eg er så glad!"

Gud er Fa-der vår. "å, eg er så glad!"

Gud er Fa-der vår. "å, eg er så glad!"

Gud er Fa-der vår. "å, eg er så glad!"

Watermark: NBI noter. This music is copyright protected.

Marcato (♩ = 96)

Fl. Obo. Cl. Fag. Trp. Trombone Horn

Soprano: "å, eg er so glad!"
 Alt: "å, eg er so glad!"
 Tenor: "å, eg er so glad!"
 Bass: "å, eg er so glad!"

Lovsang

Soprano: f Lo-va ve-re Her-ren, vår
 Alt: f Lo-va ve-re Her-ren, vår
 Tenor: f Lo-va ve-re Her-ren, vår
 Bass: f Lo-va ve-re Her-ren, vår

Solo

Viol. 1 Viol. 2 Viola V.cello C.B. Slagt

Fl.

Obo

Cl.

Fag

Trp.

Saxophone

Horn

S.

Bl. Alt.

T.

B.

Solo

Viol. 1

Viol. 2

Viola

V. cello

C.B.

Slagr.

lu- ja, hal- le- lu- ja, hal- le- lu- ja, hal- le- lu- ja, hal-
 le- lu- ja, hal- le- lu- ja, hal- le- lu- ja, hal-
 le- lu- ja, hal- le- lu- ja, hal- le- lu- ja, hal-
 mf Hal- le- lu-

Fl. *f*

Oboe *mf*

Cl.

Fag.

Trp

Pembone

Horn

S *f*
Ja, hal- le- lu- ja, hal- le- lu- ja, hal- le- lu-

Bl. Kor A *f*
Ja, hal- le- lu- ja, hal- le- lu- ja, *mf* Hal-

T *f*
Ja, hal- le- lu- ja, hal- le- lu- ja, hal- le- lu-

B *f*
le- lu- ja, hal- le- lu- ja, hal- le- lu- ja, hal- le- lu- ja, hal-

Solo

Viol. 1 *f*

Viol. 2 *f*

Viola *f*

V. cello *f*

C.B.

Slap

Fl.

Obo

Cl.

Fag.

Trp.

Tambu

Horn

S

Ja, hal-le-lu-ja hal-le-lu-ja, hal-le-lu-ja

Bl. Kor

A

le-lu-ja, hal-le-lu-ja, hal-le-lu-ja, hal-le-lu-ja, hal-le-lu-ja

T

Ja, hal-le-lu-ja, hal-le-lu-ja, hal-le-lu-ja, hal-le-lu-ja. Hal-le-lu-ja, hal-le-lu-ja, hal-le-lu-ja, hal-le-lu-ja

B

le-lu-ja, hal-le-lu-ja, hal-le-lu-ja, hal-le-lu-ja, hal-le-lu-ja, hal-le-lu-ja

Solo

Viol. 1

Viol. 2

Viola

V. cello

C. B.

Snayr

Handwritten musical score for a symphony orchestra and vocal soloist. The score is written on 20-line staves. The instruments listed on the left are: Fl., Obo, Cl., Fag, Trp., Trombon, Horn, S, Bl. A, Bl. B, Solo, Viol. 1, Viol. 2, Viola, V. cells, C.B., and Strk. The vocal soloist part (S) has the lyrics: "ja, hal-le-lu- ja, hal-le-lu- ja, hal-le-lu- ja!". The score includes various musical notations such as notes, rests, slurs, and dynamic markings like *sf*. A large watermark "NMI HOTEL" is visible across the center of the page. At the bottom right, there is a handwritten note: "Ferdigkomponert 2/6-93 på Langhus."