

Bertil Palmar Johansen

Violin Concerto



Violin Concerto

Til Elise

Bertil Palmar Johansen

1987, revised 2013

ORCHESTRA

2 Flutes (2nd doubling piccolo)

2 Oboes

Cor Anglais

2 Clarinets in Bb (2nd doubling Bass Clarinet)

2 Bassoons

Contrabassoon

3 Horns in F

2 Trumpets in C

2 Trombones

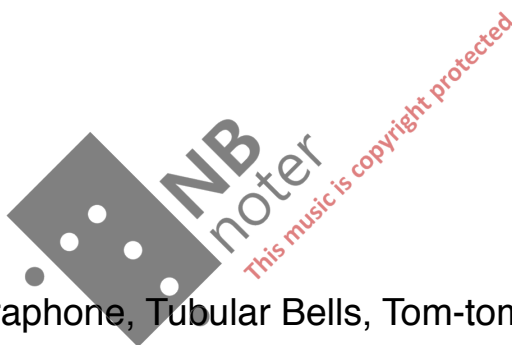
Timpani

Percussion (1 pl.)

Large drum, Vibraphone, Tubular Bells, Tom-toms 2, Glockenspiel.

Harp

Strings



Score in C

Durata 19 minutes

En bestilling fra Trondheim Symfoniorkester. Urfremført 1987. Elise Båtnes fiolin, Tamas Vasary dirigent og Trondheim Symfoniorkester. Støttet av Norsk Kulturråd.

Violin Concerto

$\text{♩} = 40$

The score is for a Violin Concerto in C major, 4/4 time, with a tempo of quarter note = 40. It features a large woodwind section including Flute 1 & 2 (doubling Piccolo), Oboe 1 & 2, Cor Anglais, Clarinet 1 in Bb, Clarinet 2 in Bb (Bass Clarinet in Bb), Bassoon 1 & 2, and Contrabassoon. The brass section includes Horns 1, 2, and 3 in F, Trumpets 1 and 2 in C, and Trombones 1 and 2. Percussion includes Timpani, large drum, and Vibraphone. The string section includes Violin solo, Violin 1 & 2, Viola, Violoncello, and Double Bass. The score includes various dynamics such as *mf*, *p*, *mp*, *f*, and *gliss.*, as well as performance instructions like *divisi harmonics/no harmonics mutes on.* and *ped.* A watermark for 'NB noter' is present in the center of the page.

Fl.1
Fl.2
Ob.1
Ob.2
C. A.
Cl.1
B. Cl.
Bsn.1
Bsn.2
Cbsn.
Hn.1
Hn.2
Hn.3
C Tpt.1
C Tpt.2
Tbn.1
Tbn.2
Timp.
Vib.
Hp.
Vln. solo
Vln. 1
Vln. 2
Vla.
Vc.
Db.

p
mp
mf
f
gliss
let ring
mutes off
pp
pizz
mp
p

Fl.1 *mp*

Fl.2 *mp*

Ob.1 *mp*

Ob.2 *mp*

C. A.

Cl.1

B. Cl.

Bsn.1

Bsn.2

Cbsn.

Hn.1

Hn.2 *p*

Hn.3 *p*

C Tpt.1

C Tpt.2

Tbn.1

Tbn.2

Timp.

Vib. *p*

Hp. *p*

Vln. solo *mp* *f*

Vln. 1 *mf* *pp* *mf*

Vln. 2 *mf* *pp* *mf*

Vla. *sul pont.* *mf* *norm.* *pp* *mf*

Vc. *f* *pp* *mf*

Db. *arco* *pp* *mf*

A

♩ = 60

Musical score for a symphony orchestra, measures 18-24. The score includes parts for Flutes (Fl. 1, 2), Oboes (Ob. 1, 2), Clarinets (C. A., Cl. 1, B. Cl.), Bassoons (Bsn. 1, 2, Cbsn.), Horns (Hn. 1, 2, 3), Trumpets (C Tpt. 1, 2), Trombones (Tbn. 1, 2), Timpani (Timp.), Vibraphone (Vib.), Harp (Hp.), Violin Solo (Vln. solo), Violins (Vln. 1, 2), Viola (Vla.), Violoncello (Vc.), and Double Bass (Db.). The score features various dynamics such as *mf*, *f*, and *mf*, and includes performance instructions like "gliss", "let ring", and "ped". A large watermark "INB noter" is overlaid on the score.

25

Fl.1 *f* *mp* *f*

Fl.2 *f* *mp* *f*

Ob.1 *f* *mp* *f*

Ob.2 *f* *mp* *f*

C. A. *f* *mp* *f*

Cl.1 *f* *mp* *f*

B. Cl. *f* *mp* *f*

Bsn.1 *f* *mp* *f*

Bsn.2 *f* *mp* *f*

Cbsn. *mf* *f* *mp* *f*

Hn.1 *f*

Hn.2 *mf* *f*

Hn.3 *f*

C Tpt.1 *f* *mf* *f*

C Tpt.2 *f* *mf* *f*

Tbn.1 *f*

Tbn.2 *f*

Timp. *mp*

Vib. *f*

Hp. *f*

Vln. solo *f* *mp*

Vln. 1 *mp* *f* *mf* *p* *pp* *mutes on*

Vln. 2 *mp* *f* *mf* *p* *pp* *mutes on*

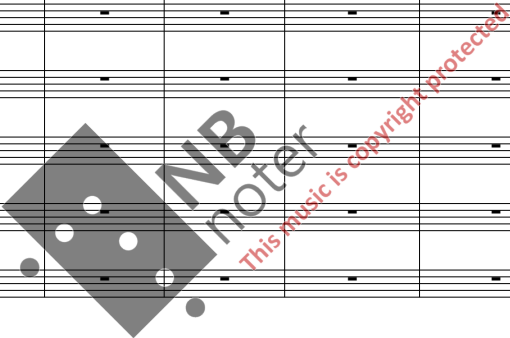
Vla. *mp* *f* *mf* *p* *pp* *mutes on*

Vc. *mp* *f* *mf* *mutes on* *pp*

Db. *mp* *f* *mf* *mutes on* *pp*

Fl.1
Fl.2
Ob.1
Ob.2
C. A.
Cl.1
B. Cl.
Bsn.1
Bsn.2
Cbsn.
Hn.1
Hn.2
Hn.3
C Tpt.1
C Tpt.2
Tbn.1
Tbn.2
Timp.
Vib.
Hp.
Vln.solo
Vln. 1
Vln. 2
Vla.
Vc.
Db.

mp
mf
f
p
p
p
p



44

B

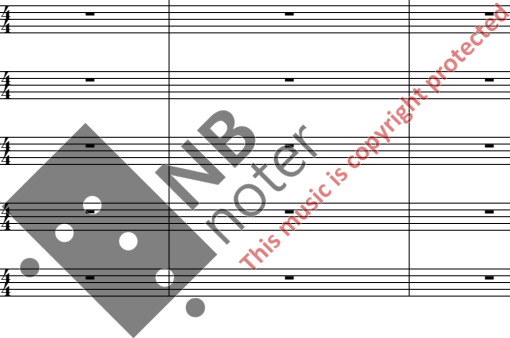
Fl.1
Fl.2
Ob.1
Ob.2
C. A.
Cl.1
B. Cl.
Bsn.1
Bsn.2
Cbsn.

Hn.1
Hn.2
Hn.3
C Tpt.1
C Tpt.2
Tbn.1
Tbn.2
Timp.

Vib.
Hp.

B

Vln. solo
Vln. 1
Vln. 2
Vla.
Vc.
Db.



53

Fl.1 *mp*

Fl.2 *mp*

Ob.1 *mp*

Ob.2 *mp*

C. A. *mp*

Cl.1 *mp*

B. Cl. *mp*

Bsn.1 *mp*

Bsn.2 *mp*

Cbsn. *mp*

Hn.1 *mp*

Hn.2 *mp*

Hn.3 *mp*

C Tpt.1

C Tpt.2

Tbn.1

Tbn.2

Timp.

Vib. *mp*
Tubular Bells

Hp.

Vln.solo

Vln. 1 *mf*

Vln. 2 *mf*

Via. *mf*

Vc. *mf*

Db. *arco* *p* *mf*

This music is copyright protected

NB
noter

62

Fl.1
Fl.2
Ob.1
Ob.2
C. A.
Cl.1
B. Cl. *To Cl.*
Bsn.1
Bsn.2
Cbsn.
Hn.1
Hn.2
Hn.3
C Tpt.1 *mute in*
C Tpt.2 *mute in*
Tbn.1 *mute in*
Tbn.2 *mute in*
Timp.
Tub. B. *To Vib.*
Hp.
Vln. solo
Vln. 1
Vln. 2
Vla.
Vc.
Db.

mp *mf*
mp *mf*
mp *mf*
mf
mf
f *mf*
mp *mf* *f* *p*
mp *mf* *f* *p*
mp *mf* *f* *p*
mp *mf* *f* *p*
mp *mf* *f* *p*

This music is copyright protected

70

Fl.1 *p* *mp* To Picc.

Fl.2 *mp* *mp*

Ob.1 *mp* *mp*

Ob.2 *mp*

C. A. *mp*

Cl.1 *mp*

B. Cl. Clarinet in B \flat *mp*

Bsn.1 *mp* *mf* *mf*

Bsn.2 *mf* *mf*

Cbsn. *mf*

Hn.1

Hn.2

Hn.3

C Tpt.1

C Tpt.2

Tbn.1

Tbn.2

Timp.

Tub. B.

Hp.

Vln. solo *f* *ff*

Vln. 1 *mutes off*

Vln. 2 *mutes off* *p*

Vla. *mutes off* *p*

Vc. *mutes off* *p*

Db. *mutes off* *p*

This music is copyright protected

Fl.1
Fl.2
Ob.1
Ob.2
C. A.
Cl.1
Cl.
Bsn.1
Bsn.2
Cbsn.
Hn.1
Hn.2
Hn.3
C Tpt.1
C Tpt.2
Tbn.1
Tbn.2
Timp.
Tub. B.
Hp.
Vln. solo
Vln. 1
Vln. 2
Vla.
Vc.
Db.

mp
mp
mp
mf
mf
mf
f

Vibraphone
To Tom-t.
ring
ring
Tom-toms

6
3
3

This musical score page, numbered 78, contains staves for various instruments. The woodwind section includes Flutes 1 and 2, Oboes 1 and 2, Cor Anglais, Clarinets 1 and 2, Bassoons 1 and 2, and Contrabassoon. The brass section includes Horns 1, 2, and 3, Trumpets 1 and 2, Trombones 1 and 2, and Timpani. Percussion includes Tubular Bells and Harp. The string section includes Violin solo, Violins 1 and 2, Viola, Violoncello, and Double Bass. Dynamics range from mezzo-piano (mp) to forte (f). Performance markings include accents and slurs. A large watermark for 'NB noter' is centered over the brass and woodwind staves, with the text 'This music is copyright protected' written diagonally across it.

C

84 ♩ = 120

Fl.1
Fl.2 Piccolo
Ob.1
Ob.2
C. A.
Cl.1
Cl.
Bsn.1
Bsn.2
Cbsn.
Hn.1
Hn.2
Hn.3
C Tpt.1
C Tpt.2
Tbn.1
Tbn.2
Timp.
Tom-t.
Hp.

C

♩ = 120

Vln. solo
Vln. 1
Vln. 2
Vla.
Vc.
Db.

This is a page of a musical score for a symphony, page 89, measure 13. The score includes parts for the following instruments: Fl. 1, Piccolo, Oboe 1, Oboe 2, Clarinet in A, Clarinet in Bb, Bassoon 1, Bassoon 2, Contrabassoon, Horn 1, Horn 2, Horn 3, Trumpets 1 and 2, Trombones 1 and 2, Timpani, Tom-tom, Harp, Violin Solo, Violin 1, Violin 2, Viola, Violoncello, and Double Bass. The key signature has two flats (B-flat and E-flat), and the time signature is 4/4. The dynamics are marked *mf* (mezzo-forte). A large watermark "NB Noter" is visible across the center of the page, along with the text "this music is copyright protected".

This page contains the musical score for measures 94 through 97 of an orchestral piece. The score is arranged in a standard orchestral layout with the following parts from top to bottom:

- Fl. 1
- Picc.
- Ob. 1
- Ob. 2
- C. A.
- Cl. 1
- Cl.
- Bsn. 1
- Bsn. 2
- Cbsn.
- Hn. 1
- Hn. 2
- Hn. 3
- C Tpt. 1
- C Tpt. 2
- Tbn. 1
- Tbn. 2
- Timp.
- Tom-t.
- Hp.
- Vln. solo
- Vln. 1
- Vln. 2
- Vla.
- Vc.
- Db.

The score features various dynamics such as *mf* (mezzo-forte) and *f* (forte). A large watermark is present in the center of the page, reading "NB mater" and "this music is copyright protected".

98

Fl.1
Picc.
Ob.1
Ob.2
C. A.
Cl.1
Cl.
Bsn.1
Bsn.2
Cbsn.

Hn.1
Hn.2
Hn.3
C Tpt.1
C Tpt.2
Tbn.1
Tbn.2

Timp.
Tom-t.
Hp.

D

Vln.solo
Vln. 1
Vln. 2
Vla.
Vc.
Db.



Fl.1
Picc.
Ob.1
Ob.2
C. A.
Cl.1
Cl.
Bsn.1
Bsn.2
Cbsn.

Hn.1
Hn.2
Hn.3
C Tpt.1
C Tpt.2
Tbn.1
Tbn.2
Timp.
Tom-t.
Hp.
Vln. solo
Vln. 1
Vln. 2
Vla.
Vc.
Db.

This music is copyright protected

This image shows a page of a musical score, page 109, for a symphony. The page contains 23 staves of music for various instruments. The instruments listed on the left are: Fl.1, Picc., Ob.1, Ob.2, C. A., Cl.1, Cl., Bsn.1, Bsn.2, Cbsn., Hn.1, Hn.2, Hn.3, C Tpt.1, C Tpt.2, Tbn.1, Tbn.2, Timp., Tom-t., Hp., Vln. solo, Vln. 1, Vln. 2, Vla., Vc., and Db. The music is written in a common time signature with a key signature of one sharp (F#). The score features complex rhythmic patterns, including many triplets. Dynamic markings such as *mf* (mezzo-forte) and *fp* (fortissimo) are used throughout. A large watermark for 'NB Noter' is overlaid on the center of the page, with the text 'This music is copyright protected' written diagonally across it.

114

Fl.1
Picc.
Ob.1
Ob.2
C. A.
Cl.1
Cl.
Bsn.1
Bsn.2
Cbsn.
Hn.1
Hn.2
Hn.3
C Tpt.1
C Tpt.2
Tbn.1
Tbn.2
Timp.
Tom-t.
Hp.
Vln. solo
Vln. 1
Vln. 2
Via.
Vc.
Db.

MP Noter
This music is copyright protected

E ♩ = 104

119 rit.

Fl.1

Picc.

Ob.1

Ob.2

C. A.

Cl.1

Cl.

Bsn.1

Bsn.2

Cbsn.

Hn.1

Hn.2

Hn.3

C Tpt.1

C Tpt.2

Tbn.1

Tbn.2

Timp.

Tom-t.

Hp.

Vln. solo

Vln. 1

Vln. 2

Vla.

Vc.

Db.

mp

quasi gliss

Vibraphone

128

Fl.1 *mf*

Picc. *mf*

Ob.1 *f*

Ob.2 *mf*

C. A. *mf*

Cl.1 *mf*

Cl. Bass Clarinet in B \flat

Bsn.1 *mp*

Bsn.2 *mf*

Cbsn.

Hn.1 *f*

Hn.2 *f*

Hn.3 *f*

C Tpt.1

C Tpt.2

Tbn.1 *mf*

Tbn.2

Timp. *mf*

Vib. *mf*

Hp. *mf*

Vln. solo *mf*

Vln. 1 mutes on

Vln. 2 mutes on

Vla. mutes on *f* pizz *p* arco

Vc. mutes on *f* pizz *p* arco

Db. mutes on *f*

134

This page contains a musical score for measures 134 through 140. The score includes staves for Flute 1, Piccolo, Oboe 1 and 2, Cor Anglais, Clarinet 1, Bass Clarinet, Bassoon 1 and 2, Contrabassoon, Horns 1-3, Trumpets 1-2, Trombones 1-2, Timpani, Vibraphone, and Harp. The strings (Violin solo, Violin 1 & 2, Viola, Violoncello, and Double Bass) also have parts. The key signature is one sharp (F#), and the time signature is 4/4. The score features dynamic markings such as *mf*, *mp*, and *f*. A 'quasi gliss' marking is present above the Violin solo part in measure 138. A watermark for 'NB noter' is centered over the woodwind section.

Fl.1
Picc.
Ob.1
Ob.2
C. A.
Cl.1
B. Cl.
Bsn.1
Bsn.2
Cbsn.
Hn.1
Hn.2
Hn.3
C Tpt.1
C Tpt.2
Tbn.1
Tbn.2
Timp.
Vib.
Hp.
Vln. solo
Vln. 1
Vln. 2
Vla.
Vc.
Db.

mf
mf
mf
mf
mp
f
quasi gliss
mp
f
mp
f
mp
f

NB noter
This music is copyright protected

F

to Flute

mf

mf

mp

mp

mp

fp — *f*

fp — *f*

fp — *f*

Vibraphone

mp

mp

Vln. solo

mp — *f* — *mf*

Via.

mutes off

mp pizz

Vc.

mutes off

mp pizz

Db.

mutes off

mp pizz

mp

145

Fl.1
Fl.2
Ob.1
Ob.2
C. A.
Cl.1
B. Cl.
Bsn.1
Bsn.2
Cbsn.
Hn.1
Hn.2
Hn.3
C Tpt.1
C Tpt.2
Tbn.1
Tbn.2
Timp.
Vib.
Hp.
Vln. solo
Vln. 1
Vln. 2
Vla.
Vc.
Db.

NB
noter
This music is copyright protected

G

♩ = 72

150

Fl. 1, Fl. 2, Ob. 1, Ob. 2, C. A., Cl. 1, B. Cl., Bsn. 1, Bsn. 2, Cbsn., Hn. 1, Hn. 2, Hn. 3, C Tpt. 1, C Tpt. 2, Tbn. 1, Tbn. 2, Timp.



To Tub. B.

Vib., Hp.

G

♩ = 72

Vln. solo, Vln. 1, Vln. 2, Vla., Vc., Db.

153

Fl.1 *mp* *mf*

Fl.2

Ob.1

Ob.2

C. A.

Cl.1

B. Cl.

Bsn.1

Bsn.2

Cbsn.

Hn.1

Hn.2

Hn.3

C Tpt.1

C Tpt.2

Tbn.1

Tbn.2

Timp.

Vib.

Hp.

Vln. solo

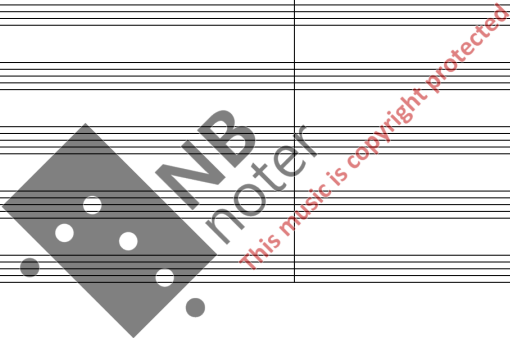
Vln. 1 *f*

Vln. 2 *f*

Vla. *f*

Vc. *f*

Db. *mf* *f*



155

Fl.1
Fl.2
Ob.1
Ob.2
C. A.
Cl.1
B. Cl.
Bsn.1
Bsn.2
Cbsn.
Hn.1
Hn.2
Hn.3
C Tpt.1
C Tpt.2
Tbn.1
Tbn.2
Timp.
Vib.
Hp.
Vln.solo
Vln. 1
Vln. 2
Vla.
Vc.
Db.

mf
mf
mf
mf
mf

NB
noter
This music is copyright protected

157

Fl.1
Fl.2
Ob.1
Ob.2
C. A.
Cl.1
B. Cl.
Bsn.1
Bsn.2
Cbsn.
Hn.1
Hn.2
Hn.3
C Tpt.1
C Tpt.2
Tbn.1
Tbn.2
Timp.
Vib.
Hp.
Vln.solo
Vln. 1
Vln. 2
Vla.
Vc.
Db.

mf *f* *f* *f*

NB noter
this music is copyright protected

159

Fl.1 *f*

Fl.2

Ob.1 *f*

Ob.2

C. A. *f*

Cl.1

B. Cl.

Bsn.1

Bsn.2 *f*

Cbsn.

Hn.1 *f*

Hn.2 *f*

Hn.3

C Tpt.1

C Tpt.2

Tbn.1 *f*

Tbn.2

Timp.

Tub. B. *f* Tubular Bells

Vibraphone

Hp.

Vln. solo

Vln. 1 *ff*

Vln. 2 *ff*

Vla. *ff*

Vc. *ff*

Db. *ff*

H

♩ = 40

accel.

161

FL.1
fl. *ff*

FL.2
ff

Ob.1
f *fp*

Ob.2
f *fp*

C. A.
ff

Cl.1
ff

B. Cl.
ff

Bsn.1
ff *f*

Bsn.2
ff

Cbsn.
ff

Hn.1
fp *f*

Hn.2
fp *f*

Hn.3
fp *f*

C Tpt.1
fp *f*

C Tpt.2
fp *f*

Tbn.1
fp *f*

Tbn.2
fp *f*

Timp.
f

Vib.
f

Hp.
f

H

♩ = 40

accel.

Vln. solo
mp

Vln. 1
f *mf* *p*

Vln. 2
f *mf* *p*

Vla.
f *mf* *p*

Vc.
f *mf* *p*

Db.
f *mf* *p*

166

Musical score for orchestra and strings, measures 166-167. The score includes parts for Flute 1 & 2, Oboe 1 & 2, Clarinet in A, Clarinet in B, Bassoon 1 & 2, Contrabassoon, Horn 1 & 2, Horn 3, Trumpet 1 & 2, Trombone 1 & 2, Timpani, Vibraphone, Harp, Violin solo, Violin 1 & 2, Viola, Violoncello, and Double Bass. The tempo is marked as ♩ = 98. The key signature has one sharp (F#). The time signature is 4/4. The score features a large watermark for 'NB noter' and the text 'This music is copyright protected'.

Fl.1 *mp* 3

Fl.2 *mp* 3

Ob.1 *mp* 3

Ob.2 *mp* 3

C. A. *mp*

Cl.1 *mp* 3

B. Cl. *mp*

Bsn.1 *mp*

Bsn.2 *mp*

Cbsn. *mp*

Hn.1

Hn.2

Hn.3

C Tpt.1

C Tpt.2

Tbn.1

Tbn.2

Timp.

Vib. *mp*

Hp. *mp*

Vln. solo *f*

Vln. 1 *pizz mp*

Vln. 2 *pizz mp*

Vla. *pizz mp*

Vc. *mp*

Db. *mp*

168

rit.

Fl.1

Fl.2

Ob.1

Ob.2

C. A.

Cl.1

B. Cl.

Bsn.1

Bsn.2

Cbsn.

Hn.1

Hn.2

Hn.3

C Tpt.1

C Tpt.2

Tbn.1

Tbn.2

Timp.

Vib.

Hp.

Vln. solo

Vln. 1

Vln. 2

Vla.

Vc.

Db.

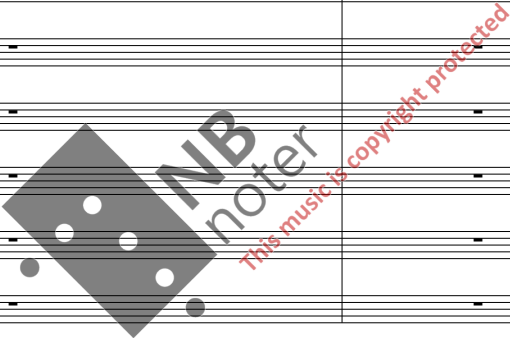
NB
noter
This music is copyright protected

171

Fl.1
Fl.2
Ob.1
Ob.2
C. A.
Cl.1
B. Cl.
Bsn.1
Bsn.2
Cbsn.

Hn.1
Hn.2
Hn.3
C Tpt.1
C Tpt.2
Tbn.1
Tbn.2

Timp.
Vib.
Hp.



Vln. solo
Vln. 1
Vln. 2
Vla.
Vc.
Db.

♩ = 52 rubato

$\text{♩} = 84$



174

Fl.1, Fl.2, Ob.1, Ob.2, C. A., Cl.1, B. Cl., Bsn.1, Bsn.2, Cbsn.

Fl.1, Fl.2, Ob.1, Ob.2, C. A., Cl.1, B. Cl., Bsn.1, Bsn.2, Cbsn.

Hn.1, Hn.2, Hn.3, C Tpt.1, C Tpt.2, Tbn.1, Tbn.2

Hn.1, Hn.2, Hn.3, C Tpt.1, C Tpt.2, Tbn.1, Tbn.2

Timp., Vib., Hp.

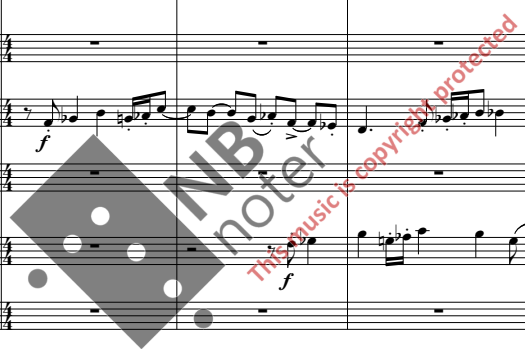
Timp., Vib., Hp.

$\text{♩} = 84$



Vln. solo, Vln. 1, Vln. 2, Vla., Vc., Db.

Vln. solo, Vln. 1, Vln. 2, Vla., Vc., Db.



FL.1
FL.2
Ob.1
Ob.2
C. A.
Cl.1
B. Cl.
Bsn.1
Bsn.2
Cbsn.
Hn.1
Hn.2
Hn.3
C Tpt.1
C Tpt.2
Tbn.1
Tbn.2
Timp.
Vib.
Hp.
Vln. solo
Vln. 1
Vln. 2
Vla.
Vc.
Db.

This music is copyright protected

mf

f arco *p*

f arco *p*

f arco *p*

f arco *p*

f arco *p*

Fl.1 *p* *mf*

Fl.2 *p* *mf*

Ob.1 *p* *mf*

Ob.2 *p* *mf*

C. A. *p* *mf*

Cl.1 *p* *mf*

B. Cl. *p* *mf*

Bsn.1 *p* *mf*

Bsn.2 *p* *mf*

Cbsn. *p* *mf*

Hn.1

Hn.2

Hn.3

C Tpt.1

C Tpt.2

Tbn.1

Tbn.2

Timp.

Vib.

Hp.

Vln.solo *f*

Vln. 1 *f*

Vln. 2 *f*

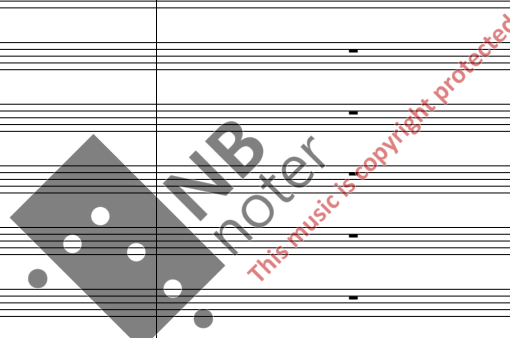
Vla. *f*

Vc. *f*

Db. *f*

This musical score page contains the following parts and markings:

- Flutes (Fl. 1, Fl. 2):** Play a triplet of eighth notes in measures 189-190 (*p*), then a triplet of eighth notes in measure 191 (*mp*).
- Oboes (Ob. 1, Ob. 2):** Play a triplet of eighth notes in measures 189-190 (*p*), then a triplet of eighth notes in measure 191 (*mp*).
- Clarinets (Cl. 1, B. Cl.):** Play a triplet of eighth notes in measures 189-190 (*p*), then a triplet of eighth notes in measure 191 (*mp*).
- Bassoons (Bsn. 1, Bsn. 2):** Play a triplet of eighth notes in measures 189-190 (*p*), then a triplet of eighth notes in measure 191 (*mp*).
- Contrabassoon (Cbsn.):** Play a triplet of eighth notes in measures 189-190 (*p*), then a triplet of eighth notes in measure 191 (*mp*).
- Horns (Hn. 1, Hn. 2, Hn. 3):** Rest in all measures.
- Trumpets (C Tpt. 1, C Tpt. 2):** Rest in all measures.
- Trombones (Tbn. 1, Tbn. 2):** Rest in all measures.
- Timpani (Timp.):** Rest in all measures.
- Vibraphone (Vib.):** Rest in all measures.
- Hammered Dulcimer (Hp.):** Rest in all measures.
- Violin Solo (Vln. solo):** Play a triplet of eighth notes in measures 189-190, then a triplet of eighth notes in measure 191.
- Violins (Vln. 1, Vln. 2):** Play a triplet of eighth notes in measures 189-190 (*p*), then a triplet of eighth notes in measure 191 (*p*). Vln. 1 has a *pizz* marking in measure 191.
- Viola (Via.):** Play a triplet of eighth notes in measures 189-190 (*p*), then a triplet of eighth notes in measure 191 (*p*).
- Violoncello (Vc.):** Play a triplet of eighth notes in measures 189-190 (*p*), then a triplet of eighth notes in measure 191 (*p*).
- Double Bass (Db.):** Play a triplet of eighth notes in measures 189-190 (*p*), then a triplet of eighth notes in measure 191 (*p*).

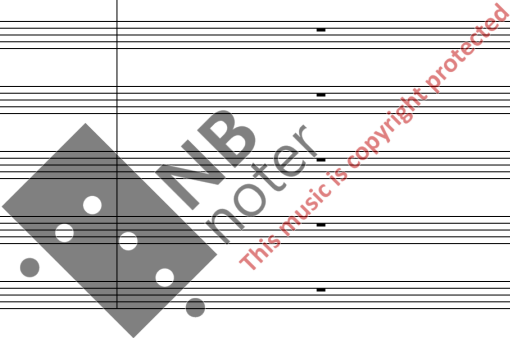


192

Fl.1
Fl.2
Ob.1
Ob.2
C. A.
Cl.1
B. Cl.
Bsn.1
Bsn.2
Cbsn.

To Cl.

Hn.1
Hn.2
Hn.3
C Tpt.1
C Tpt.2
Tbn.1
Tbn.2
Timp.
Vib.
Hp.



Vln. solo
Vln. 1
Vln. 2
Vla.
Vc.
Db.

Fl.1

Fl.2

Ob.1

Ob.2

C. A.

Cl.1

B. Cl.

Bsn.1

Bsn.2

Cbsn.

Hn.1

Hn.2

Hn.3

C Tpt.1

C Tpt.2

Tbn.1

Tbn.2

Timp.

Vib.

Hp.

Vln. solo

Vln. 1

Vln. 2

Vla.

Vc.

Db.

NB noter
This music is copyright protected

f

f

f

f

FL.1
FL.2
Ob.1
Ob.2
C. A.
Cl.1
B. Cl.
Bsn.1
Bsn.2
Cbsn.
Hn.1
Hn.2
Hn.3
C Tpt.1
C Tpt.2
Tbn.1
Tbn.2
Timp.
Vib.
Hp.
Vln. solo
Vln. 1
Vln. 2
Vla.
Vc.
Db.

mp
mp
mf
f
mf
quasi gliss
f
arco
arco
arco
arco
pizz
f
p
p

Clarinet in B \flat

tr

mf <

mf *f*

*mf*³

mf

arco
arco
arco
arco
p
p

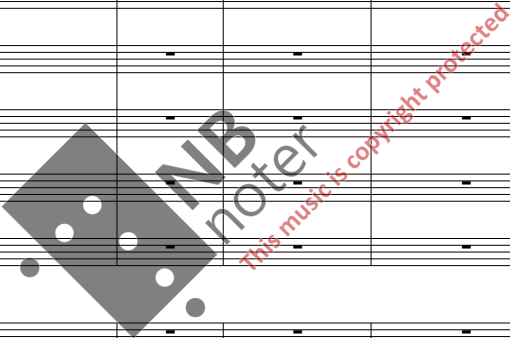
This page contains the musical score for measures 201 through 205. The instruments and parts are as follows:

- Flutes:** Fl. 1 and Fl. 2 are silent.
- Oboes:** Ob. 1 plays a melodic line starting in measure 201 with a *mf* dynamic. Ob. 2 is silent.
- Clarinets:** Cl. 1 and Cl. 2 play a melodic line starting in measure 201 with a *p* dynamic.
- Bassoons:** Bsn. 1, Bsn. 2, and Cbsn. are silent.
- Horns:** Hn. 1, Hn. 2, and Hn. 3 are silent.
- Trumpets:** C Tpt. 1 and C Tpt. 2 are silent.
- Trombones:** Tbn. 1 and Tbn. 2 are silent.
- Timpani:** Timp. is silent.
- Vibraphone:** Vib. is silent.
- Harpsichord:** Hp. plays a rhythmic accompaniment starting in measure 201 with a *mp* dynamic and a *sim* (sostenuto) marking.
- Solo Violin:** Vln. solo plays a complex, fast-moving melodic line starting in measure 201 with a *f* dynamic.
- Violins:** Vln. 1 and Vln. 2 are silent.
- Viola:** Vla. plays a melodic line starting in measure 201 with a *p* dynamic.
- Violoncello:** Vc. plays a melodic line starting in measure 201 with a *p* dynamic.
- Double Bass:** Db. plays a melodic line starting in measure 201 with a *p* dynamic.

A large watermark is present in the center of the page, reading "NB noter" and "this music is copyright protected".

This page contains the musical score for measures 207 through 212. The instruments and their parts are as follows:

- Flutes (Fl. 1, Fl. 2):** Both parts are silent throughout the measures.
- Oboes (Ob. 1, Ob. 2):** Both parts are silent until measure 212, where they play a single note marked *p*.
- Clarinet in A (C. A.):** Silent until measure 212, where it plays a short phrase marked *mp*.
- Clarinets (Cl. 1, Cl.):** Cl. 1 has a melodic line starting in measure 207, marked *mf*. Cl. has a harmonic line starting in measure 210, marked *p*.
- Bassoons (Bsn. 1, Bsn. 2):** Bsn. 1 has a harmonic line starting in measure 210, marked *p*. Bsn. 2 has a melodic line starting in measure 207, marked *p*.
- Contrabassoon (Cbsn.):** Silent until measure 210, where it plays a harmonic line marked *p*.
- Horns (Hn. 1, Hn. 2, Hn. 3):** Hn. 1 has a melodic line starting in measure 210, marked *mp*. Hn. 2 and Hn. 3 are silent.
- Trumpets (C Tpt. 1, C Tpt. 2):** Both parts are silent.
- Trombones (Tbn. 1, Tbn. 2):** Both parts are silent.
- Timpani (Timp.):** Silent throughout.
- Vibraphone (Vib.):** Silent until measure 212, where it plays a chord marked *mp*.
- Harpsichord (Hp.):** Silent until measure 212, where it plays a chord marked *mf*.
- Violin Solo (Vln. solo):** A complex melodic line with dynamics *mf*, *f*, and *mf*.
- Violins (Vln. 1, Vln. 2):** Vln. 1 is silent. Vln. 2 has a melodic line starting in measure 207, marked *mf*.
- Viola (Via.):** Has a melodic line starting in measure 207, marked *mf*.
- Violoncello (Vc.):** Has a melodic line starting in measure 207, marked *mf*.
- Double Bass (Db.):** Has a melodic line starting in measure 207, marked *mf*.



This page contains a musical score for measures 214 through 218. The instruments listed on the left are:

- Fl. 1 and Fl. 2: Flutes, starting with *mp* and ending with *p*.
- Ob. 1 and Ob. 2: Oboes, starting with *mf* and ending with *p*.
- C. A.: Clarinet in A, starting with *mf* and ending with *p*.
- Cl. 1 and Cl.: Clarinets, starting with *mf* and ending with *p*.
- Bsn. 1 and Bsn. 2: Bassoons, starting with *mf* and ending with *p*.
- Cbsn.: Contrabassoon, starting with *mf* and ending with *p*.
- Hn. 1, 2, 3: Horns, all silent.
- C Tpt. 1 and C Tpt. 2: Trumpets in C, all silent.
- Tbn. 1 and Tbn. 2: Trombones, all silent.
- Timp.: Timpani, all silent.
- Vib.: Vibraphone, playing chords, with a note "to tom toms" above the staff.
- Hp.: Harp, playing chords.
- Vln. solo: Solo Violin, playing a complex, fast passage marked *f*.
- Vln. 1 and Vln. 2: Violins, all silent.
- Vla.: Viola, all silent.
- Vc.: Violoncello, all silent.
- Db.: Double Bass, all silent.

The score is in 4/4 time and features dynamic markings (*mf*, *mp*, *p*, *f*) and crescendo/decrescendo hairpins. A large watermark "NB noter" is overlaid on the page, with the text "This music is copyright protected" written diagonally across it.

K

220 ♩ = 120

Fl.1

Fl.2 To Picc.

Ob.1

Ob.2

C. A.

Cl.1

Cl.

Bsn.1

Bsn.2

Cbsn.

Hn.1

Hn.2

Hn.3

C Tpt.1

C Tpt.2

Tbn.1

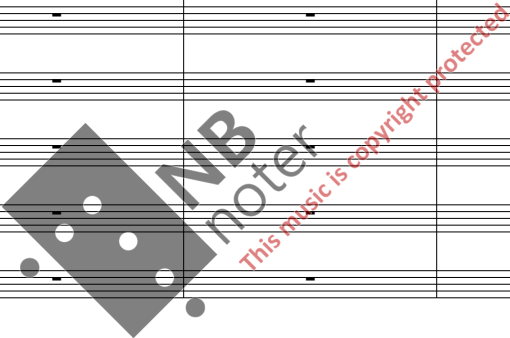
Tbn.2

Timp.

Vib.

Hp.

Tom-toms



K

♩ = 120

Vln. solo

Vln. 1

Vln. 2

Vla.

Vc.

Db.

Fl.1 *p* Piccolo *mp*

Fl.2 *p* *mp* *mf*

Ob.1 *mf*

Ob.2

C. A.

Cl.1 *p* *mp*

Cl. *mp*

Bsn.1

Bsn.2

Cbsn.

Hn.1

Hn.2

Hn.3

C Tpt.1

C Tpt.2

Tbn.1

Tbn.2

Timp.

Tom-t.

Hp.

Vln. solo

Vln. 1 *f*

Vln. 2 *f*

Vla. *f*

Vc. *mf* *f*

Db. *mp* *mf* *f*

NB
noter
This music is copyright protected



Fl.1 *mf* *f*

Picc. *f*

Ob.1 *f*

Ob.2 *mf* *f*

C. A. *mf* *f*

Cl.1 *mf* *f*

Cl. *mf* *f*

Bsn.1

Bsn.2

Cbsn.

Hn.1

Hn.2

Hn.3 *mf* *fp*

C Tpt.1

C Tpt.2

Tbn.1

Tbn.2

Timp. *p* *mp*

Tom-t. *p* *mp*

Hp.



Vln.solo

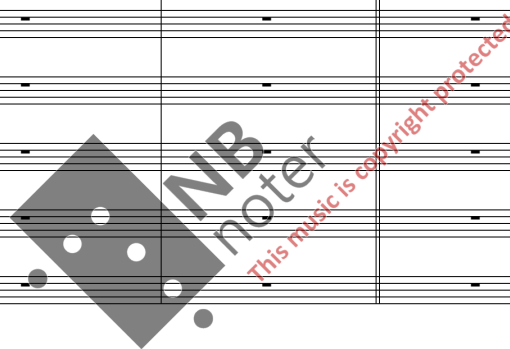
Vln. 1 *p*

Vln. 2 *p*

Vla. *p*

Vc. *p*

Db. *p*



Fl.1
Picc.
Ob.1
Ob.2
C. A.
Cl.1
Cl.
Bsn.1
Bsn.2
Cbsn.
Hn.1
Hn.2
Hn.3
C Tpt.1
C Tpt.2
Tbn.1
Tbn.2
Timp.
Tom-t.
Hp.
Vln.solo
Vln. 1
Vln. 2
Vla.
Vc.
Db.

Fl.1
Picc.
Ob.1
Ob.2
C. A.
Cl.1
Cl.
Bsn.1
Bsn.2
Cbsn.
Hn.1
Hn.2
Hn.3
C Tpt.1
C Tpt.2
Tbn.1
Tbn.2
Timp.
Vib.
Hp.
Vln. solo
Vln. 1
Vln. 2
Vla.
Vc.
Db.

let ring
mf
mp
p
mf³
mp³
f
p
3
6
7

NB
noter
This music is copyright protected

Fl.1
Picc.
Ob.1
Ob.2
C. A.
Cl.1
Cl.
Bsn.1
Bsn.2
Cbsn.
Hn.1
Hn.2
Hn.3
C Tpt.1
C Tpt.2
Tbn.1
Tbn.2
Timp.
Vib.
Hp.
Vln. solo
Vln. 1
Vln. 2
Vla.
Vc.
Db.

let ring
let ring
To Glock.
p
p
f
mp
rubato
f

NB
noter
This music is copyright protected

Fl.1
Picc.
Ob.1
Ob.2
C. A.
Cl.1
Cl.
Bsn.1
Bsn.2
Cbsn.
Hn.1
Hn.2
Hn.3
C Tpt.1
C Tpt.2
Tbn.1
Tbn.2
Timp.
Vib.
Hp.
Vln. solo
Vln. 1
Vln. 2
Vla.
Vc.
Db.

plunger mute
fp < *fp* < *fp*
plunger mute
fp < *fp* < *fp* < *fp*
plunger mute
fp < *fp* < *fp* < *fp*
plunger mute
fp < *fp* < *fp* < *fp*

♩ = 80
f

This page contains a musical score for measures 266 through 270. The instruments listed on the left are: Fl.1, Picc., Ob.1, Ob.2, C. A., Cl.1, Cl., Bsn.1, Bsn.2, Cbsn., Hn.1, Hn.2, Hn.3, C Tpt.1, C Tpt.2, Tbn.1, Tbn.2, Timp., Vib., Hp., Vln. solo, Vln. 1, Vln. 2, Vla., Vc., and Db. The woodwind and brass sections (C Tpt.1, C Tpt.2, Tbn.1, Tbn.2) have active parts starting in measure 266. The C Tpt.1 part features a melodic line with accents and dynamic markings of *fp* and *fp* < *fp*. The Tbn.1 part has a similar melodic line with *fp* markings. The Tbn.2 part has a rhythmic accompaniment with *fp* markings. The solo violin part (Vln. solo) begins in measure 266 with a tremolo and continues with a complex rhythmic pattern. The rest of the orchestra (Fl.1, Picc., Ob.1, Ob.2, C. A., Cl.1, Cl., Bsn.1, Bsn.2, Cbsn., Hn.1, Hn.2, Hn.3, Vib., Hp., Vln. 1, Vln. 2, Vla., Vc., Db.) is silent throughout these measures.

270

rit.

FL.1
Picc.
Ob.1
Ob.2
C. A.
Cl.1
Cl.
Bsn.1
Bsn.2
Cbsn.
Hn.1
Hn.2
Hn.3
C Tpt.1
C Tpt.2
Tbn.1
Tbn.2
Timp.
Vib.
Hp.
Vln. solo
Vln. 1
Vln. 2
Via.
Vc.
Db.

mp
mf
fp
mf
fp
mf
fp
mf
fp
mf
fp
mf
ff
mf
pizz
mf
pizz
mf

mute out

rit.

rit.

NB noter
This music is copyright protected

278

FL.1 *mf* *mp*

Picc.

Ob.1 *mf*

Ob.2 *mp* *mf*

C. A.

Cl.1

Cl.

Bsn.1

Bsn.2

Cbsn.

Hn.1

Hn.2

Hn.3

C Tpt.1

C Tpt.2

Tbn.1

Tbn.2

Timp.

Glock.

Hp.

Vln. solo

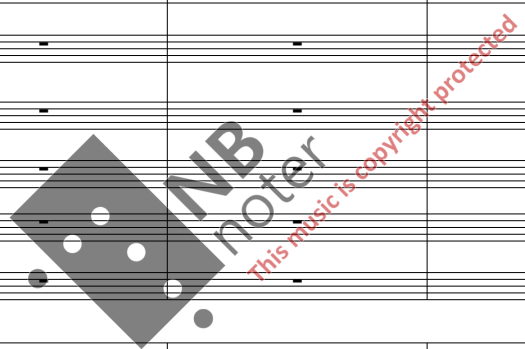
Vln. 1 *pizz* *mp*

Vln. 2 *mp* *mp*

Vla. *mp* *mp*

Vc. *mp* *mp*

Db. *mp* *mp*



283

Fl.1 *mf* *mp*

Picc.

Ob.1

Ob.2 *mf*

C. A.

Cl.1

Cl.

Bsn.1

Bsn.2

Cbsn.

Hn.1

Hn.2

Hn.3

C Tpt.1

C Tpt.2

Tbn.1

Tbn.2

Timp.

Glock.

Hp.

Vln. solo *mf*

Vln. 1 *mf*

Vln. 2 *mf*

Vla. *mf*

Vc. *mf*

Db. *mf*

NB noter
This music is copyright protected

288 rit. $\text{♩} = 66$

Fl.1 *mp*

Picc.

Ob.1

Ob.2 *mp*

C. A.

Cl.1 *mp*

Cl. *mp*

Bsn.1

Bsn.2

Cbsn.

Hn.1

Hn.2

Hn.3

C Tpt.1

C Tpt.2

Tbn.1

Tbn.2

Timp.

Glock. To Tub. B.

Hp. C, Db, Eb, Fb, G, Ab, H *gliss*

Vln. solo *f* rit. $\text{♩} = 66$ *ff* *mf*

Vln. 1 *f* *arco* *mp* *p*

Vln. 2 *f* *arco* *mp* *p*

Vla. *f* *arco* *mp* *p*

Vc. *f* *mp* *p*

Db. *f* *mp* *p*

Musical score for orchestra and strings, measures 297-304. The score includes parts for Flute 1 (Fl. 1), Piccolo (Picc.), Oboe 1 (Ob. 1), Oboe 2 (Ob. 2), Cor Anglais (C. A.), Clarinet 1 (Cl. 1), Clarinet (Cl.), Bassoon 1 (Bsn. 1), Bassoon 2 (Bsn. 2), Contrabassoon (Cbsn.), Horn 1 (Hn. 1), Horn 2 (Hn. 2), Horn 3 (Hn. 3), Trumpet 1 (C Tpt. 1), Trumpet 2 (C Tpt. 2), Trombone 1 (Tbn. 1), Trombone 2 (Tbn. 2), Timpani (Timp.), Glockenspiel (Glock.), Harp (Hp.), Violin Solo (Vln. solo), Violin 1 (Vln. 1), Violin 2 (Vln. 2), Viola (Vla.), Violoncello (Vc.), and Double Bass (Db.).

Measures 297-304 are marked with a tempo of ♩ = 52. The score features various dynamics including *mf*, *mp*, and *f*. A large watermark "NB noter" is overlaid on the score, with the text "This music is copyright protected" written diagonally across it.

○

306

Musical score for orchestra and strings, measures 306-315. The score includes parts for Flute 1, Piccolo, Oboe 1 and 2, Cor Anglais, Clarinet 1 and 2, Bassoon 1 and 2, Contrabassoon, Horns 1-3, Trumpets 1-2, Trombones 1-2, Timpani, Glockenspiel, Harp, Violin solo, Violin 1 and 2, Viola, Violoncello, and Double Bass. The music is in 4/4 time. Dynamics include *mp*, *p*, *mf*, and *pizz*. Performance instructions include *mutes off*, *arco*, and *pizz*. A large watermark 'NB noter' and 'This music is copyright protected' is overlaid on the score.

This page contains a musical score for measures 316 through 320. The score is arranged in a standard orchestral layout with the following parts from top to bottom:

- Fl. 1
- Picc.
- Ob. 1
- Ob. 2
- C. A.
- Cl. 1
- Cl.
- Bsn. 1
- Bsn. 2
- Cbsn.
- Hn. 1
- Hn. 2
- Hn. 3
- C Tpt. 1
- C Tpt. 2
- Tbn. 1
- Tbn. 2
- Timp.
- Glock.
- Hp.
- Vln. solo
- Vln. 1
- Vln. 2
- Vla.
- Vc.
- Db.

Key features of the score include:

- Fl. 1:** Features a melodic line starting in measure 316 with a *mp* dynamic marking. It includes a slur over measures 316-317 and another slur over measures 318-320.
- C. A.:** Features a melodic line starting in measure 316 with a *mp* dynamic marking. It includes a slur over measures 316-317 and another slur over measures 318-320.
- Bsn. 2:** Features a melodic line starting in measure 316 with a *mp* dynamic marking. It includes a slur over measures 316-317 and another slur over measures 318-320.
- Vln. 1:** Features a melodic line starting in measure 316 with a *mp* dynamic marking. It includes a slur over measures 316-317 and another slur over measures 318-320. A "mutes off" instruction is present in measure 317.
- Vln. 2:** Features a melodic line starting in measure 316 with a *mp* dynamic marking. It includes a slur over measures 316-317 and another slur over measures 318-320.
- Vc. and Db.:** Both parts feature a melodic line starting in measure 316 with a *mp* dynamic marking. They include a slur over measures 316-317 and another slur over measures 318-320.

The score is marked with a large watermark: "NB noter This music is copyright protected".

325

♩ = 69

accel.

Fl. 1

Picc.

Ob. 1

Ob. 2

C. A.

Cl. 1

Cl.
 Bass Clarinet
 in B \flat

Bsn. 1

Bsn. 2

Cbsn.

mp

mf

p

Hn. 1

Hn. 2

Hn. 3

C Tpt. 1

C Tpt. 2

Tbn. 1

Tbn. 2

p

Timp.

Glock.

Hp.

p

tr

mp

Vln. solo

Vln. 1

Vln. 2

Vla.

Vc.

Db.

f

p

p

mutes off

p

p

accel.



Fl.1

Picc. *f* *picc*

Ob.1 *f*

Ob.2 *f*

C. A.

Cl.1 *f*

B. Cl.

Bsn.1 *f*

Bsn.2 *f*

Cbsn. *f*

Hn.1 *f* *sim*

Hn.2 *f* *sim*

Hn.3 *f* *sim*

C Tpt.1 *f* *sim*

C Tpt.2 *f* *sim*

Tbn.1 *f* *sim*

Tbn.2 *f* *sim*

Timp. *mf* *f*

Glock. *mf* Tubular Bells

Hp.

Vln. solo ♩ = 86

Vln. 1 *f*

Vln. 2 *f*

Vla. *f*

Vc. *f*

Db. *f*

Fl.1
Picc.
Ob.1
Ob.2
C. A.
Cl.1
B. Cl.
Bsn.1
Bsn.2
Cbsn.
Hn.1
Hn.2
Hn.3
C Tpt.1
C Tpt.2
Tbn.1
Tbn.2
Timp.
Tub. B.
Hp.
Vln. solo
Vln. 1
Vln. 2
Vla.
Vc.
Db.

This musical score page contains measures 337 through 340. The woodwind section (Fl.1, Picc., Ob.1, Ob.2, Cl.1, B. Cl., Bsn.1, Bsn.2, Cbsn.) and brass section (Hn.1-3, C Tpt.1-2, Tbn.1-2, Tuba) play melodic lines with various articulations. The string section (Vln. 1, Vln. 2, Vla., Vc., Db.) provides harmonic support, with the violins featuring glissando markings and a forte (ff) dynamic. The percussion section includes a timpani part with rhythmic patterns. A large watermark 'M.B. Noter' is present across the center of the page.

rit.



♩ = 52

Musical score for orchestral instruments including Flute (Fl.1, Picc.), Oboe (Ob.1, Ob.2), Clarinet (C.A., Cl.1), Bassoon (B. Cl., Bsn.1, Bsn.2, Cbsn.), Horn (Hn.1, Hn.2, Hn.3), Trumpet (C Tpt.1, C Tpt.2), Trombone (Tbn.1, Tbn.2), Timpani (Timp.), Tuba (Tub. B.), Harp (Hp.), Violin solo (Vln. solo), Violin (Vln. 1, Vln. 2), Viola (Vla.), Violoncello (Vc.), and Double Bass (Db.).

Rehearsal mark 342 is indicated at the beginning of the score. The tempo is marked $\text{♩} = 52$. The score includes dynamic markings such as *mf* (mezzo-forte) and *mp* (mezzo-piano), and performance instructions like "To Fl.", "to Vibraphone let ring", and "let ring".

A watermark "MB noter" and "This music is copyright protected" is visible across the score.

347

Fl.1
Flute

Fl.
mf *f*

Ob.1
mf

Ob.2

C. A.

Cl.1
mf *f*

B. Cl.

Bsn.1

Bsn.2

Cbsn.

Hn.1

Hn.2

Hn.3

C Tpt.1

C Tpt.2

Tbn.1

Tbn.2

Timp.

Vib.
mf let ring

Hp.
*mf*³

Vln. solo
mf *f* *mf*

Vln. 1
mutes on
pp mutes on

Vln. 2
pp mutes on

Vla.
pp

Vc.
mutes on

Db.
pp

Fl.1
Fl.
Ob.1
Ob.2
C. A.
Cl.1
B. Cl.
Bsn.1
Bsn.2
Cbsn.
Hn.1
Hn.2
Hn.3
C Tpt.1
C Tpt.2
Tbn.1
Tbn.2
Timp.
Vib.
Hp.
Vln. solo
Vln. 1
Vln. 2
Vla.
Vc.
Db.

mp *p*

mutes on
pp

NB noter
This music is copyright protected

Fl.1
Fl.
Ob.1
Ob.2
C. A.
Cl.1
B. Cl.
Bsn.1
Bsn.2
Cbsn.
Hn.1
Hn.2
Hn.3
C Tpt.1
C Tpt.2
Tbn.1
Tbn.2
Timp.
Vib.
Hp.
Vln. solo
Vln. 1
Vln. 2
Vla.
Vc.
Db.

mf *f* *mp* *pp* *mp* *pp* *mp* *pp* *mp* *pp*

ped. *mp* *mp*³

This music is copyright protected