

Bertil Palmar Johansen

## **Time Builds the City**

**Orchestral suit from the ballet**

## **Tiden Bygger Byen**

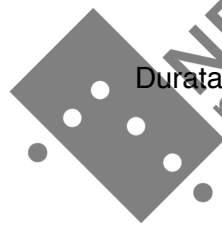
**Orkestersuite fra balletten**

Part I Tiden - The Time

Part II Katedralen og Lyset - The Cathedral and the Light

Part III Byen - The City

Durata 12 minutes



NB  
noter

This music is copyright protected

En bestilling fra Trondheim Symfoniorkester  
Trondheim Kommune - Tusenårsjubileet  
Rikskonsertene - Norsk Kulturråd

# Bertil Palmar Johansen

## **Time Builds the City** Orchestral suite from the ballet

### Tiden Bygger Byen Orkestersuite fra balletten

#### Part I, II, III

#### **Instrumentation.**

2 Flutes (2. doubling piccolo)  
2 Oboes  
Cor Anglais  
2 Clarinets in Bb (2. doubling Bass clarinet)  
2 Bassoons

3 Horns in F  
2 Trumpets in Bb  
2 Trombones  
Tuba

Timpani

Percussion (2 players)

1. Marimba, Tom-toms 3, Tubular bells, Temple blocks 3, Vibraphone, Susp. cymbal (medium), Tam-tam.
2. Xylophone, Tom-toms 3, Cabasa, Temple blocks 3.

Strings

Durata 12 minutes

Score in C

Tiden Bygger Byen var en bestilling til 1000 års jubileet i Trondheim 1997. Balletten hadde premiere i Olavshallen 24 oktober samme år med Trondheim Symfoniorkester og dirigent Terje Boye Hansen. Koreografi og iscenesettelse: Anne Grete Erikse og Leif Hernes. Kostymer: Ellinor Flor. Prosjeksjoner: Guri Dahl. Scenografi: Ian Magilton

Score in C

# Time builds the city. part I - The Time

Orchestral suite - from the ballet Time Builds the City

Bertil Palmær Johansen

♩ = 120

This is a full orchestral score for the piece "Time builds the city. part I - The Time" by Bertil Palmær Johansen. The score is in C major and 3/4 time, with a tempo of 120 beats per minute. It features a large ensemble of instruments, including woodwinds, brass, percussion, and strings. The woodwind section includes Flute 1, Flute 2 (doubling piccolo), Oboe 1, Oboe 2, Cor Anglais, Clarinet in Bb 1, Clarinet in Bb 2 (doubling bass clarinet), Bassoon 1, and Bassoon 2. The brass section includes Horns in F (1, 2, 3), Trumpets in Bb (1, 2), Trombones (1, 2), and Tuba. The percussion section includes Timpani, Percussion 1, and Percussion 2. The string section includes Violin I, Violin II, Viola, Violoncello (two parts), and Contrabass. The score is marked with a large "NB noter" watermark and "this music is copyright protected" in red. The string parts feature a prominent triplet pattern starting in the second measure, marked with a piano (*pp*) dynamic.

Fl. 1

Fl. 2

Ob. 1

Ob. 2

C. A.

Cl. 1

Cl. 2

Bsn. 1

Bsn. 2

Hn. 1

Hn. 2

Hn. 3

Tpt. 1

Tpt. 2

Tbn. 1

Tbn. 2

Tba.

Timp.

Perc. 1

Perc. 2

Vln. I

Vln. II

Via.

Vc.

Vc.

Vc.

Cb.

*p*

**NB** noter  
This music is copyright protected



Fl. 1

Fl. 2

Ob. 1

Ob. 2

C. A.

Cl. 1

Cl. 2

Bsn. 1

Bsn. 2

Hn. 1

Hn. 2

Hn. 3

Tpt. 1

Tpt. 2

Tbn. 1

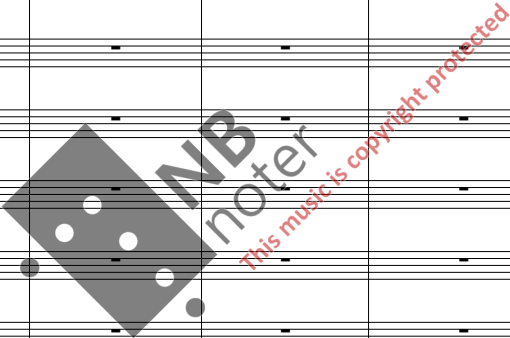
Tbn. 2

Tba.

Timp.

Perc. 1

Perc. 2



Vln. I

Vln. II

Vla.

Vc.

Vc.

Vc.

Cb.

*f*



36

Fl. 1 *mf*

Fl. 2 *mf*

Ob. 1 *mf*

Ob. 2 *mf*

C. A. *mf*

Cl. 1 *mf*

Cl. 2 *mf*

Bsn. 1 *mp* *mf*

Bsn. 2 *mp* *mf*

Hn. 1

Hn. 2

Hn. 3

Tpt. 1

Tpt. 2

Tbn. 1

Tbn. 2

Tba.

Timp.

Perc. 1

Perc. 2

Vln. I

Vln. II

Vla. *mp* *p*

Vc. *mp*

Vc. *mp*

Vc. *mp*

Cb. *p* *mp*





54

Fl. 1 *f* *mf* *pp*

Fl. 2 *mf* *pp* muta in piccolo

Ob. 1 *mf* *pp*

Ob. 2 *mf* *pp*

C. A. *mf* *pp*

Cl. 1 *mf* *pp*

Cl. 2 *mf* *pp* muta in b.cl

Bsn. 1

Bsn. 2

Hn. 1

Hn. 2

Hn. 3

Tpt. 1

Tpt. 2

Tbn. 1

Tbn. 2

Tba.

Timp. *mp* *f* *mp*

Perc. 1 Marimba *mp* *f* *f*

Perc. 2 Xylophone *mp* *f* *f*

Vln. I

Vln. II

Vla.

Vc.

Vc.

Vc.

Cb.





Fl. 1  
Picc.  
Ob. 1  
Ob. 2  
C. A.  
Cl. 1  
B. Cl.  
Bsn. 1  
Bsn. 2  
Hn. 1  
Hn. 2  
Hn. 3  
Tpt. 1  
Tpt. 2  
Tbn. 1  
Tbn. 2  
Tba.  
Timp.  
Mar.  
Xyl.  
Vln. I  
Vln. II  
Via.  
Vc.  
Cb.

*mp*  
*mf*  
*f*  
pizz  
mf



Musical score for orchestra and woodwinds, measures 80-84. The score is written in 3/4 time and includes parts for Flute 1, Piccolo, Oboe 1 and 2, Clarinet 1, Bass Clarinet, Bassoon 1 and 2, Horns 1-3, Trumpets 1-2, Trombones 1-2, Tuba, Timpani, Maracas, Xylophone, Violin I and II, Viola, Violoncello, and Contrabass. The score features various dynamics such as *mf*, *mp*, and *f*, and includes triplets and accents. A large watermark for 'NB noter' is overlaid on the score, with the text 'This music is copyright protected'.



Fl. 1

Picc.

Ob. 1

Ob. 2

C. A.

Cl. 1

B. Cl.

Bsn. 1

Bsn. 2

Hn. 1

Hn. 2

Hn. 3

Tpt. 1

Tpt. 2

Tbn. 1

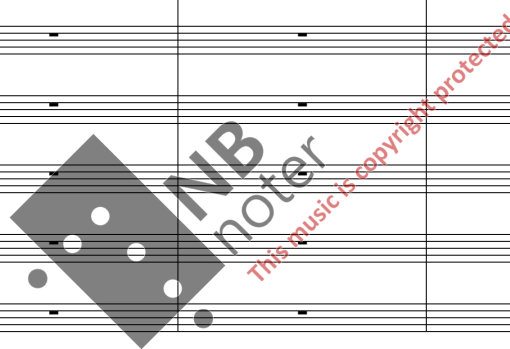
Tbn. 2

Tba.

Timp.

Mar.

Xyl.



Vln. I

Vln. I

Vln. II

Vln. II

Vla.

Vc.

Cb.

arco

*p*

*p* arco

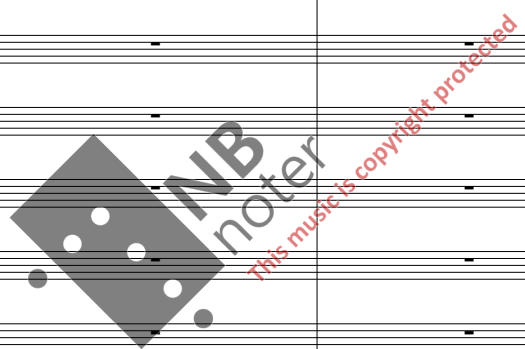
arco

3



Fl. 1  
Picc.  
Ob. 1  
Ob. 2  
C. A.  
Cl. 1  
B. Cl.  
Bsn. 1  
Bsn. 2

Hn. 1  
Hn. 2  
Hn. 3  
Tpt. 1  
Tpt. 2  
Tbn. 1  
Tbn. 2  
Tba.  
Timp.  
Mar.  
Xyl.



Vln. I  
Vln. I  
Vln. II  
Vln. II  
Vla.  
Vc.  
Cb.

105

This musical score page contains the following parts and details:

- Woodwinds:** Fl. 1, Picc., Ob. 1, Ob. 2, C. A., Cl. 1, B. Cl., Bsn. 1, Bsn. 2, Hn. 1, Hn. 2, Hn. 3, Tpt. 1, Tpt. 2, Tbn. 1, Tbn. 2, Tba.
- Percussion:** Timp., Mar., Xyl.
- Strings:** Vln. I, Vln. II, Vla., Vc., Cb.

The score is divided into four measures. Measures 105 and 106 are mostly rests for the woodwinds and brass. The strings play a rhythmic pattern of eighth notes. In measure 107, the woodwinds and brass begin to play. The timpani part in measure 107 features four triplet patterns, marked *mf*. The string parts continue with their rhythmic pattern, with some dynamics markings like *f* and *mf*.

A watermark "NB noter" is overlaid on the score, with the text "This music is copyright protected" written diagonally across it.

109

Fl. 1 *mp* *f*

Picc. *mp* *f*

Ob. 1 *mp* *f*

Ob. 2 *mp* *f*

C. A. *mp* *f*

Cl. 1 *mp* *f*

B. Cl. -

Bsn. 1 -

Bsn. 2 -

Hn. 1 - *p*

Hn. 2 - *p*

Hn. 3 - *p*

Tpt. 1 -

Tpt. 2 -

Tbn. 1 *mp* *f*

Tbn. 2 *mp* *f*

Tba. -

Timp. *f* *mp*

Mar. -

Xyl. -

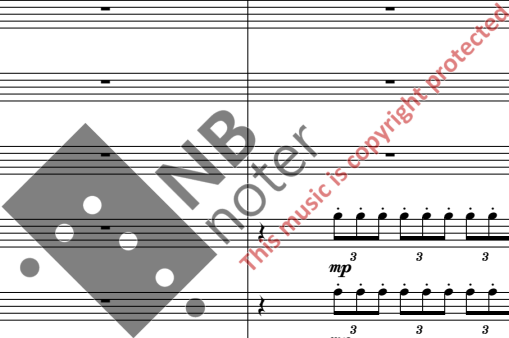
Vln. I *mp* *f*

Vln. II *mp* *f*

Vla. *mp* *f*

Vc. *mp* *f*

Cb. *mp* *f*











Fl. 1 *mf* *f*

Picc. *mf* *f*

Ob. 1 *mf* *f*

Ob. 2 *mf* *f*

C. A. *mf* *f*

Cl. 1 *mf* *f*

B. Cl. *mf* *f*

Bsn. 1 *mf* *f*

Bsn. 2 *mf* *f*

Hn. 1 *mf* *f*

Hn. 2 *mf* *f*

Hn. 3 *mf* *f*

Tpt. 1 *mf* *f*

Tpt. 2 *mf* *f*

Tbn. 1 *f*

Tbn. 2 *f*

Tba. *f*

Timpani *mf*

Tom-t. *mp* *mf*

Tom-t. *mf*

Vln. I *mf*

Vln. II *mf*

Vla. *mf*

Vc. *mf*

Cb. *mf*

*This music is copyright protected*

This page contains the musical score for page 26, measures 130 to 132. The score is for a full orchestra and strings. The instruments listed on the left are: Fl. 1, Picc., Ob. 1, Ob. 2, C. A., Cl. 1, B. Cl., Bsn. 1, Bsn. 2, Hn. 1, Hn. 2, Hn. 3, Tpt. 1, Tpt. 2, Tbn. 1, Tbn. 2, Tba., Timp., Tom-t., Tom-t., Vln. I, Vln. II, Vla., Vc., and Cb. The score features a complex rhythmic pattern with many triplets and sixteenth notes. A large watermark 'NB Noter' is overlaid diagonally across the center of the page, with the text 'This music is copyright protected' written in red below it. The page number '26' is in the top left, and the measure number '130' is at the top left of the first staff.



# Time builds the city. part II - The Cathedral and the Light

Bertil Palmar Johansen

$\text{♩} = 60$

Flute 1 *mp*

Flute 2 *mp*

Oboe 1 *mp*

Oboe 2

Cor Anglais *mp* *mf*

Clarinet in B $\flat$  1 *mp*

Clarinet in B $\flat$  2 *mp*

Bassoon 1

Bassoon 2

Horn in F 1

Horn in F 2

Horn in F 3

Trumpet in B $\flat$  1

Trumpet in B $\flat$  2

Trombone 1

Trombone 2

Tuba

Timpani  $\text{♩} = 60$  *mp*

Percussion 1

Percussion 2

Violin I *p* *mp* *p* *mp* *p* *mp* *p* *mp*

Violin II *p* *mp* *p* *mp* *p* *mp* *p* *mp*

Viola *p* *mf* *p* *p* *mf*

Violoncello *p* *mf* *p*

Contrabass *p* *mf* *p*

*sordin on*

*sordin on*

**NB noter**  
This music is copyright protected

9  $\text{♩} = 72$

Fl. 1 *p*

Fl. 2

Ob. 1

Ob. 2

C. A.

Cl. 1 *mf*

Cl. 2

Bsn. 1

Bsn. 2

Hn. 1

Hn. 2

Hn. 3

Tpt. 1

Tpt. 2

Tbn. 1

Tbn. 2

Tba.

Timp.  $\text{♩} = 72$

Perc. 1

Perc. 2

Vln. I *mf* *p* *p* *mf*

Vln. II *p* *mf* *p* *p* *mf*

Vla. *p* sordin on *p* *p* *mf*

Vc. *p* sordin on *p* *p* *mf*

Cb. *p* sordin on *p* *p* *mf*





Fl. 1

Fl. 2

Ob. 1

Ob. 2

C. A.

Cl. 1

Cl. 2

Bsn. 1

Bsn. 2

Hn. 1

Hn. 2

Hn. 3

Tpt. 1 *mute* *mf*

Tpt. 2

Tbn. 1

Tbn. 2

Tba.

Timp.

Perc. 1

Perc. 2

Vln. I *mp* *mf* *p*

Vln. II *mp* *mf* *p*

Via. *mp* *mf* *p*

Vc. *pizz* *mp* *mf* *p*

Cb. *mp* *mf* *mp*

*This music is copyright-protected*

Fl. 1 *mp* *mp*

Fl. 2

Ob. 1 *mp* *mp* *mf*

Ob. 2

C. A.

Cl. 1 *f*

Cl. 2

Bsn. 1

Bsn. 2

Hn. 1 *mf* *mf* *f* *mf* *f* *f*

Hn. 2 *f*

Hn. 3 *f*

Tpt. 1

Tpt. 2

Tbn. 1

Tbn. 2

Tba.

Timp.

Perc. 1

Perc. 2

Vln. I *p* *mp* *mp* *f*

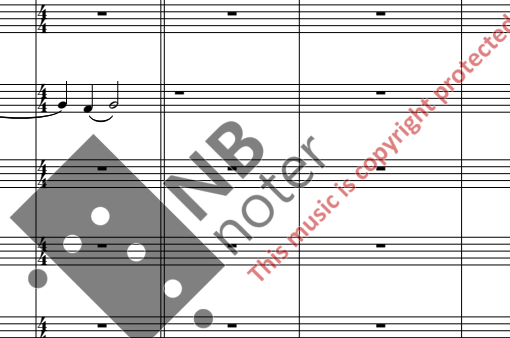
Vln. II *p* *mp* *mp* *f*

Vla. *f*

Vc. *f* *p* *f*

Cb. *mf* *p* *f*

arco



45

Fl. 1 *mf* *p*

Fl. 2 *p*

Ob. 1 *mp* *f* *p*

Ob. 2 *mp* *f* *p*

C. A. *fp* *p*

Cl. 1 *p*

Cl. 2 Bass Clarinet in B $\flat$  *p*

Bsn. 1 *p*

Bsn. 2 *p*

Hn. 1 *fp*

Hn. 2 *fp*

Hn. 3

Tpt. 1

Tpt. 2

Tbn. 1

Tbn. 2

Tba.

Timp.

Perc. 1 Tubular Bells *f* ring

Perc. 2

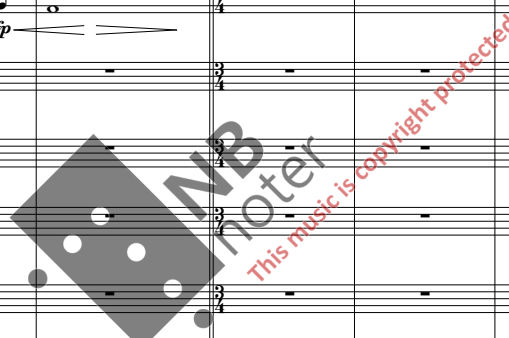
Vln. I *mf* *f* *mf*

Vln. II *mf* *f* *p*

Vla. *mf* *f* *p*

Vc. *mf* *f* *p*

Cb. *mf* *f* *pizz* *mp*





Fl. 1

Fl. 2

Ob. 1

Ob. 2

C. A.

Cl. 1

B. Cl.

Bsn. 1

Bsn. 2

Hn. 1

Hn. 2

Hn. 3

Tpt. 1

Tpt. 2

Tbn. 1

Tbn. 2

Tba.

Timp.

Tub. B.

Perc. 2

Vln. I

Vln. II

Vla.

Vc.

Cb.

*mf*

*mp*

*p*

*mf*

ring

Percussion

Temple Blocks



Fl. 1

Fl. 2

Ob. 1

Ob. 2

C. A.

Cl. 1

B. Cl.

Bsn. 1

Bsn. 2

Hn. 1

Hn. 2

Hn. 3

Tpt. 1

Tpt. 2

Tbn. 1

Tbn. 2

Tba.

Timp.

T. Bl.

Cab.

Vln. I

Vln. II

Vla.

Vc.

Cb.

NB noter  
This music is copyright protected

79

Fl. 1

Piccolo

Picc. *f*

Ob. 1

Ob. 2 *f*

C. A.

Cl. 1 *f*

B. Cl. *f*

Bsn. 1 *f*

Bsn. 2 *f*

Hn. 1

Hn. 2

Hn. 3 *f*

Tpt. 1

Tpt. 2

Tbn. 1

Tbn. 2

Tba.

Timp. *mp* *p*

Vibraphone

Cab. To Xyl.

Vln. I *p*

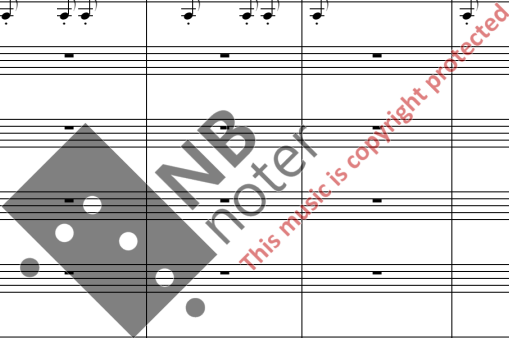
Vln. I *p* *mf* *p* *mf* *p* *mf* *p* *mf*

Vln. II *p*

Vla. *p*

Vc. *mf* *mf* *mf* *mf* *mf* *mf*

Cb. *mp* *p*



# Time builds the city. part III - The City

87

$\text{♩} = 96$

This page contains the musical score for measures 87-90 of the piece 'Time builds the city. part III - The City'. The score is arranged in a standard orchestral format with multiple staves for each instrument family. The instruments included are Flute 1, Piccolo, Oboe 1 and 2, Cor Anglais, Clarinet 1, Bass Clarinet, Bassoon 1 and 2, Horn 1, 2, and 3, Trumpet 1 and 2, Trombone 1 and 2, Tuba, Timpani, Vibraphone, and Cymbals. The woodwinds and brasses play rhythmic patterns, often with accents and dynamic markings such as *f*, *fp*, and *mf*. The strings play sustained chords with glissandi and sul ponticello effects. The percussion section features a complex rhythmic pattern on the vibraphone and cymbals, with dynamic markings *f* and *mp*. A large watermark for 'NB noter' is overlaid on the score, with the text 'This music is copyright protected' written diagonally across it.





101

Fl. 1  
Picc.  
Ob. 1  
Ob. 2  
C. A.  
Cl. 1  
B. Cl.  
Bsn. 1  
Bsn. 2  
Hn. 1  
Hn. 2  
Hn. 3  
Tpt. 1  
Tpt. 2  
Tbn. 1  
Tbn. 2  
Tba.  
Timp.  
Mar.  
Xyl.  
Vln. I  
Vln. II  
Vla.  
Vc.  
Cb.

*NB*  
noter  
This music is copyright protected

*p* *ff*



113  $\text{♩} = 80$   $\text{♩} = 132$

Fl. 1 *f* Flute

Picc. *f*

Ob. 1 *f*

Ob. 2 *f*

C. A. *f*

Cl. 1 *f*

B. Cl. *f*

Bsn. 1 *f*

Bsn. 2 *f*

Hn. 1 *f*

Hn. 2 *f*

Hn. 3 *f*

Tpt. 1 *f*

Tpt. 2 *f*

Tbn. 1 *f*

Tbn. 2 *f*

Tba. *f*

Timpani  $\text{♩} = 80$   $\text{♩} = 132$  *mf*

Tom-toms *mf*

Tom-toms *mf*

Vln. I *f*

Vln. II *f*

Vla. *f*

Vc. *f*

Cb. *f*











Fl. 1 *f* *mp* *f* *mp*

Fl. 2 *mp* *f* *mp*

Ob. 1 *mp* *f* *mp*

Ob. 2 *mp* *f* *mp*

C. A.

Cl. 1 *f* *mp* *f* *mp*

B. Cl.

Bsn. 1

Bsn. 2

Hn. 1

Hn. 2

Hn. 3

Tpt. 1 *f* *fp* *f*

Tpt. 2 *f* *fp* *f* *fp* *f*

Tbn. 1

Tbn. 2

Tba.

Timp. *mp*

Tom-t. *p* Tom-toms

T. Bl.

Vln. I *f* *mp* *f* *mp*

Vln. II *mp* *f* *mp* *f*

Vla. *f*

Vc. *f*

Cb. *f*

*This music is copyright protected*

Fl. 1 *mf* *f* *mf* *f* *mp* *mf*

Fl. *mf* *f* *mf* *f* *mp* *mf*

Ob. 1 *mf* *f* *mf* *f* *mp* *mf*

Ob. 2 *mf* *f* *mf* *f* *mp* *mf*

C. A. *mf* *f* *mf* *f* *mp* *mf*

Cl. 1 *mf* *f* *mf* *f* *mp* *mf*

B. Cl. *f* *f* *f* *f*

Bsn. 1 *f* *f* *f* *f*

Bsn. 2 *f* *f* *f* *f*

Hn. 1 *f*

Hn. 2 *f*

Hn. 3 *f*

Tpt. 1 *fp*

Tpt. 2 *fp*

Tbn. 1 *f* *fp*

Tbn. 2 *f* *fp*

Tba. *f* *fp*

Timp. *f* *f*

Cym. ring *f*

Tom-t. *f*

Vln. I *f*

Vln. II *mp* *f*

Vla. *mp* *f*

Vc. *mp* *f*

Cb. *mp* *f*



Fl. 1 *f mp mf f*

Fl. *f mp mf f*

Ob. 1 *f mp mf f*

Ob. 2 *f mp mf f*

C. A. *f mp mf f*

Cl. 1 *f mp mf f*

B. Cl. *f mf*

Bsn. 1 *f mf*

Bsn. 2 *f mf*

Hn. 1

Hn. 2

Hn. 3

Tpt. 1 *f*

Tpt. 2 *f*

Tbn. 1 *f fp f*

Tbn. 2 *f fp f*

Tba. *f fp f*

Timp. *mf f mf f*

Cym.

Tom-t. Tom-toms

Vln. I

Vln. II

Vla. *f*

Vc. *f*

Cb. *f*





Musical score for orchestra, page 55, measures 168-173. The score includes parts for the following instruments:

- Fl. 1
- Fl.
- Ob. 1
- Ob. 2
- C. A.
- Cl. 1
- B. Cl.
- Bsn. 1
- Bsn. 2
- Hn. 1
- Hn. 2
- Hn. 3
- Tpt. 1
- Tpt. 2
- Tbn. 1
- Tbn. 2
- Tba.
- Timp.
- T. t. (Tam-tam)
- Tom-t.
- Vln. I
- Vln. II
- Vla.
- Vc.
- Cb.

Key markings and dynamics include *mp*, *f*, *ff*, *mf*, and *pizz*. Performance instructions include *rit.*, *ring*, and *Tom-toms*. The score features complex rhythmic patterns with triplets and various note values across the measures.

175

Fl. 1 *f*

Fl. 2 *f*

Ob. 1 *f*

Ob. 2 *f*

C. A. *f*

Cl. 1 *f*

B. Cl. *f*

Bsn. 1 *f*

Bsn. 2 *f*

Hn. 1 *f*

Hn. 2 *f*

Hn. 3 *f*

Tpt. 1 *f*

Tpt. 2 *f*

Tbn. 1 *f*

Tbn. 2 *f*

Tba. *f*

Timp. *fp*

Tom-t. *f*

Tom-t. *f*

Vln. I *ff*

Vln. II *ff*

Vla. *ff*

Vc. *ff*

Cb. *ff*

*This music is copyright protected*

**NB** noter



179

Fl. 1

Fl.

Ob. 1

Ob. 2

C. A.

Cl. 1

B. Cl.

Bsn. 1

Bsn. 2

Hn. 1

Hn. 2

Hn. 3

Tpt. 1

Tpt. 2

Tbn. 1

Tbn. 2

Tba.

Timp.

Tom-t.

Tom-t.

Vln. I

Vln. II

Vla.

Vc.

Cb.

*mf*

*mp*

*f*

*p*

*arco*

To Xyl.



187 rit. =60

Fl. 1  
Fl.  
Ob. 1  
Ob. 2  
C. A.  
Cl. 1  
B. Cl.  
Bsn. 1  
Bsn. 2  
Hn. 1  
Hn. 2  
Hn. 3  
Tpt. 1  
Tpt. 2  
Tbn. 1  
Tbn. 2  
Tba.  
Timp.  
Tom-t.  
Tom-t. Xylophone  
Vln. I  
Vln. II  
Via.  
Vc.  
Cb.

*mp*  
*mp*  
*pp*  
*mp*  
*mp*  
*mp*  
*mp*  
*mp*  
*mp*  
*mp*  
*mp*  
*mp*  
*mp*

*rit.* =60

*mp*  
*mp*

