

Bertil Palmar Johansen

Bassoon Concerto



Concerto for Bassoon and Chamber Orchestra 2020/22

Bertil Palmar Johansen

orchestra:

Flute
Oboe
Clarinet in Bb
Bassoon

Strings

Durata: 12 min.



Til Sarah Warner Vik

Concerto for Bassoon and Chamber Orchestra

Skumring ved sjøen - Dusk by the sea

Score in C

Bertil Palmar Johansen
2020/22

♩ = 72

Flute

Oboe

Clarinet in B \flat

Bassoon

Bassoon Solo

Violin 1

Violin 2

Viola

Violoncello

Contrabass

p

p

p

pizz

p

pizz

p

dolce

mp

NB noter
This music is copyright protected

Bsn.solo

Vln. 1

Vln. 2

Vla.

Vc.

Cb.

mf

mp

p

mp

arco

mp

arco

mp

p

mp

p

Bsn.solo

Vln. 1

Vln. 2

Vla.

Vc.

Cb.

mf

mp

pp

mp

pp

mp

pp

mp

pp

mp

pp

mp

pp

accel.

♩ = 132

Bsn.solo

Vln. 1

Vln. 2

Vla.

Vc.

Cb.

mf

p

cresc.

f

p

cresc.

p

cresc.

p

cresc.

p

cresc.

30 **A**

Fl. *mf*

Ob. *mf*

Cl. *mf*

Bsn. *mf*

Bsn.solo *mf*

Vln. 1 *mf* pizz

Vln. 2 *mf* pizz

Vla. *mf* pizz

Vc. *mf* pizz

Cb. *mf* pizz

36

Fl. *mp*

Ob. *mp*

Cl. *mp*

Bsn. *mp*

Bsn.solo *mf*

Vln. 1 *mp*

Vln. 2 *mp*

Vla. *mp*

Vc. *mp*

Cb. *mp*

B

52

Fl.

Ob.

Cl.

Bsn.

Bsn.solo

Vln. 1

Vln. 2

Vla.

Vc.

Cb.

mp

mf

mp

mp

mp

tutti
pizz

mp

mp



58

Fl.

Ob.

Cl.

Bsn.

Bsn.solo

Vln. 1

Vln. 2

Vla.

Vc.

Cb.

mf

mf

mf

f

mf

mf

mf

mf

mf

mf

64

Bsn.

Bsn.solo

mf
pizz

Vln. 1

mp
pizz

Vln. 2

mp
pizz

Vla.

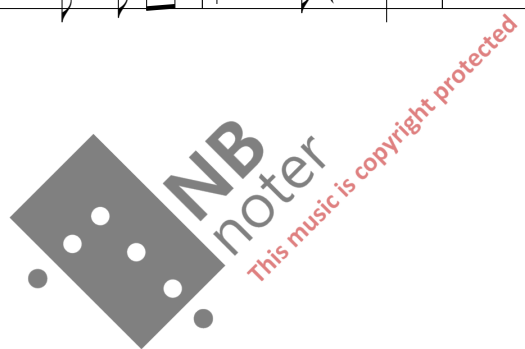
mp

Vc.

mp

Cb.

mp



==

69

Bsn.solo

f

Vln. 1

f

Vln. 2

f

Vla.

f

Vc.

f

Cb.

f

rit.

C ♩ = 72

75

Fl. *mf*

Ob. *mf*

Cl.

Bsn.

Bsn.solo *mf* *f* ³ arco *mf*

Vln. 1 *mf* arco *mf*

Vln. 2 *mf* arco *mf*

Vla. *mf* arco *mf*

Vc. *mf* arco *mf*

Cb. *mf* arco *mf*



81

Fl. *mp*

Ob. *mp*

Cl. *mf* *mp*

Bsn.

Bsn.solo *mf*

Vln. 1 *mp*

Vln. 2 *mp*

Vla. *mp*

Vc. *mp*

Cb. *mp* pizz *mp*

♩ = 120



88

Fl.

Ob.

Cl.

Bsn.

Bsn.solo

Vln. 1

Vln. 2

Vla.

Vc.

Cb.



94

Fl.

Ob.

Cl.

Bsn.

Bsn.solo

Vln. 1

Vln. 2

Vla.

Vc.

Cb.

D ♩ = 72

100

rit.

Fl.

Ob.

Cl.

Bsn.

Bsn.solo

Vln. 1

Vln. 2

Vla.

Vc.

Cb.

mp *f* *p*



106

Bsn.solo

Vln. 1

Vln. 2

Vla.

Vc.

Cb.

mf *f* *cresc.* *cresc.* *cresc.* *mf* *mf*

113

Bsn.solo

Vln. 1

Vln. 2

Vla.

Vc.

Cb.

f *mf* *p*

E

$\text{♩} = 132$

119

Fl.

Ob.

Cl.

Bsn.

Bsn.solo

Vln. 1

Vln. 2

Vla.

Vc.

Cb.

mp *mp* *mp* *mf* *mp* *mp* *mp* *mp* *mp*

pizz

123

Fl. *mf*

Ob. *mf*

Cl. *mf*

Bsn.

Bsn.solo

Vln. 1 *mf*

Vln. 2 *mf*

Vla. *mf*

Vc. *mf*

Cb. *mf*

128

Fl. *f*

Ob. *f*

Cl. *f*

Bsn. *mf < f*

Bsn.solo *f*

Vln. 1 *f*

Vln. 2 *f*

Vla. *f* arco

Vc. *f*

Cb. *f*

132 rit.

Fl. *mp* *f*

Ob. *mp* *f*

Cl. *mp* *f*

Bsn. *mp* *f*

Bsn.solo *mp* *f*

Vln. 1 *mp* arco *f*

Vln. 2 *mp* arco *f*

Vla. *mp* arco *f*

Vc. *mp* *f*

Cb. *mp* arco *f*

137 **F** ♩ = 72

Fl. *p*

Ob. *p*

Cl. *p*

Bsn. *p*

Bsn.solo *mp*

Vln. 1 *p*

Vln. 2 *p*

Vla. *p*

Vc. *p*

Cb. *p*

146

Fl. *mp* *mf*

Ob. *mp*

Cl. *mp*

Bsn.

Bsn.solo

Vln. 1 *mf*

Vln. 2 *mf*

Vla. *mf*

Vc. *mf*

Cb. *mf*

153

Fl. *mf* *mf*

Ob. *mf* *mf* *mf*

Cl. *mf* *mf* *mf*

Bsn.

Bsn.solo *mf*

Vln. 1

Vln. 2

Vla.

Vc.

Cb.

159 *accel.* $\text{♩} = 132$ **G**

Fl. *f*

Ob. *f*

Cl. *f*

Bsn. *f*

Bsn.solo *f*

Vln. 1 *cresc.* *f*

Vln. 2 *cresc.* *f*

Vla. *cresc.* *f*

Vc. *cresc.* *f*

Cb. *f*



164

Fl. *mp* *f* *mp*

Ob. *mp* *f* *mp*

Cl. *mp* *f* *mp*

Bsn. *mp* *f* *mp*

Bsn.solo *mf*

170

Fl.

Ob.

Cl.

Bsn.

Bsn.solo

mp

mf



rit.

H ♩ = 72

175

Fl.

Ob.

Cl.

Bsn.

Bsn.solo

Vln. 1

Vln. 2

Vla.

Vc.

Cb.

mp

p

mf

pizz

p

dolce

183

Bsn.solo

Vln. 1

Vln. 2

Vla.

Vc.

Cb.



189

Fl.

Ob.

Cl.

Bsn.

Bsn.solo

Vln. 1

Vln. 2

Vla.

Vc.

Cb.

NB noter
This music is copyright protected

♩ = 144 Leggiero \triangle

196

Fl. *mp*

Ob. *mp*

Cl. *mp*

Bsn. *mp*

Bsn.solo *mf*

Vln. 1 *mp*

Vln. 2 *mp*

Vla. *mp*
arco

Vc. *mp*

Cb. *mp*

203

Fl.

Ob.

Cl.

Bsn.

Bsn.solo

Vln. 1

Vln. 2

Vla.

Vc.

Cb. arco

209

Fl. *mf* *mp*

Ob. *mf* *mp*

Cl. *mf* *mp*

Bsn. *mf* *mp*

Bsn.solo

Vln. 1 *mf* *mp*

Vln. 2 *mf* *mp*

Vla. *mf* *mp*

Vc. *mf* *mp*

Cb. *mf* *mp*

216

Fl. *mf*

Ob. *mf*

Cl. *mf*

Bsn. *mf*

Bsn.solo

Vln. 1 *mf*

Vln. 2 *mf*

Vla. *mf*

Vc. *mf*

Cb. *mf*

J

△ | |

222

Fl.

Ob.

Cl.

Bsn.

Bsn.solo

Vln. 1

Vln. 2

Vla.

Vc.

Cb.

mf

pizz

||

228

Bsn.solo

Vln. 1

Vln. 2

Vla.

Vc.

Cb.

234

Fl. *mp*

Ob. *mp*

Cl. *mp*

Bsn. *mp*

Bsn.solo *mf*

Vln. 1

Vln. 2

Vla.

Vc.

Cb.



242

Fl.

Ob.

Cl.

Bsn.

Bsn.solo

248

Fl. *mf*

Ob. *mf*

Cl. *mf*

Bsn. *mf*

Bsn.solo

△

>



254

rit. $\text{♩} = 72$

Fl. *mp*

Ob. *mp*

Cl. *mp*

Bsn. *mp*

Bsn.solo *mp*

Vln. 1

Vln. 2

Vla.

Vc.

Cb.

MP notes

This music is copyright protected

276

Fl. *mf* *mf* *mf*

Ob. *mf* *mf*

Cl. *mf* *mf*

Bsn.

Bsn.solo *mf*

Vln. 1 *p* *mf*

Vln. 2 *p* *mf*

Vla. *p*

Vc. *p* *mf*

Cb. *p* *mf*

Detailed description: This block contains the musical score for measures 276 through 281. It features ten staves: Flute (Fl.), Oboe (Ob.), Clarinet (Cl.), Bassoon (Bsn.), Bassoon solo (Bsn.solo), Violin 1 (Vln. 1), Violin 2 (Vln. 2), Viola (Vla.), Violoncello (Vc.), and Contrabass (Cb.). The Flute part has a melodic line with slurs and accents, marked *mf*. The Oboe and Clarinet parts have similar melodic lines, also marked *mf*. The Bassoon solo part has a melodic line marked *mf*. The Violin 1 and 2 parts have a melodic line marked *p* and *mf*. The Viola part has a melodic line marked *p*. The Violoncello and Contrabass parts have a melodic line marked *p* and *mf*. A large watermark 'NB meter' is visible over the score.

282

Fl. *mp*

Ob. *mf*

Cl. *mf*

Bsn.

Bsn.solo *mp*

Vln. 1 *p*

Vln. 2 *p*

Vla. *p*

Vc. *p*

Cb. *p*

Detailed description: This block contains the musical score for measures 282 through 287. It features the same ten staves as the previous block. The Flute part has a melodic line marked *mp*. The Oboe part has a melodic line marked *mf*. The Clarinet part has a melodic line marked *mf*. The Bassoon solo part has a melodic line marked *mp*. The Violin 1 and 2 parts have a melodic line marked *p*. The Viola part has a melodic line marked *p*. The Violoncello and Contrabass parts have a melodic line marked *p*. A large watermark 'NB meter' is visible over the score.

287

rit.

Bsn.solo

Vln. 1

Vln. 2

Vla.

Vc.

Cb.

