

KETIL HVOSLEF

Konsert for violin og pop-band





KONSERT

for

VIOLIN

or

POP - BAND

or

KETIL SÆVERUD - 1979.

NYVOSLEF



This music is copyright protected

1. OBS: *ff* = max.
pp = min. $\text{♩} = \text{ca. } 116$

VIOLINKONSERT (rev.)

HVOSLEF
KETIL SEVERUD 79.

VIOLIN 4/4

ff marc. molto

el. organ

PIANO (gr. Piano)
(tel. ORGAN
el. PIANO
el. GUITAR
el. BASS)

Piano

f el. organ
pp el. organ etc. al ①

SLAGVERK
(Percussion)

f Cymb.

mp dolce

ff marc. molto

*1 snaredr., 5 tom-toms, 2 bassdrums (with/without ped.), 2 Cymbals (big/small), 1 hi-hat.

1

Piano + el. piano + el. gt.

ff + el. piano + el. brass

(cymb.)

p *cresc.* *molto ff*

f espr.

Piano

Bass-drum

mf

piano + el. guitar (played pizz.)

etc.

etc.

+ el. piano (sharp) *sim.*
mf etc. *mp sub.*
mp
mp *sim.*
 + el. bass (played pizz.)
mp

mf etc. *mp sub.*
poco a poco cresc.
poco a poco cresc.

Handwritten musical score for the first system, featuring three staves (treble, piano, and bass) and a drum line. The treble staff begins with a dynamic marking of *mf* and a *cresc.* instruction, followed by a *ff* marking. The piano staff includes a *cresc.* marking and a *TUTTI* instruction with a *ff* dynamic. The bass staff is marked *ff*. The drum line includes a *Snare drum (sn. or)* and a *ff (Bass-drum)* marking.

Handwritten musical score for the second system, featuring four staves (treble, electric guitar, electric bass, and piano) and a drum line. The treble staff has a *mp dolce* marking and a *ff* marking. The electric guitar and electric bass staves are both marked *mp dolce*. The piano staff is marked *ff TUTTI*. The drum line includes a *ff* marking. A large watermark is present across the center of the page.

Handwritten musical score for the third system, featuring four staves (treble, piano, electric bass, and cymbal). A circled number '2' is written above the first staff. The treble staff is marked *p ma molto intenso* and *cresc.*. The piano and electric bass staves are marked *Piano + el. bass* and *mp ma molto intenso*. The cymbal staff is marked *Cymb. xxxxxxxx xxxxxxxx* and *mp (on cup)*.

Musical score system 1. Treble clef staff with notes and dynamics *f*. Bass clef staff with notes and dynamics *f sub.*, *p*, *f*. Percussion staff with symbols and dynamics *sn. drum mpp*, *f*. Annotations include *+ el. guitar* with arrows pointing to specific notes.

Musical score system 2. Treble clef staff with notes and a fermata marked *7*. Bass clef staff with notes and dynamics *p*. Percussion staff with symbols and dynamics *p*. Annotation includes *(: el. guitar)* with an arrow.

Musical score system 3. Treble clef staff with notes and dynamics *ff*, *ff aggressivo*, *el. piano (only)*, *loco*, *mf*. Bass clef staff with notes and dynamics *f*, *p*, *f*, *mp*. Percussion staff with symbols and dynamics *f*, *mp*, *du*. Annotations include *+ el. gt.*, *: el. gt.*, and *+ el. guitar* with arrows.

Handwritten musical notation on a single staff. Above the staff are notes: $\Pi \Pi \Pi$, v , V , and $\Pi \Pi$ etc. The notation includes various rhythmic values and accidentals.

Handwritten musical notation on a single staff, continuing the piece.

Handwritten musical notation on a grand staff (treble and bass clefs). Includes the instruction *+ el. guitar* with downward arrows. Dynamic markings include *f*, *mp*, and *f*. A section is marked with a percentage sign $\%$.

Handwritten musical notation on a single staff. Includes the instruction *espr. molto*.

Handwritten musical notation on a grand staff. Includes the instruction *+ el. guitar*. Dynamic markings include *molto*, *mp*, and *f*. Specific performance instructions include *unis keyb.* and *(el. bass)*.

Handwritten musical notation on a single staff, including a section marked with a percentage sign $\%$.

Handwritten musical notation on a single staff. Includes a circled number **3** and the instruction *3^o non vibr.*

Handwritten musical notation on a grand staff. Includes the instruction *piano + el. gt. etc.* and *molto marcato*. A section is marked with a percentage sign $\%$.

Handwritten musical notation on a single staff. Includes the instruction *sp. dr.* and *b. dr.*

Handwritten musical score for the first system, featuring a piano and cymbal parts. The piano part includes dynamic markings such as *ff*, *piano (only)*, *mf*, *8va*, and *8va*. The cymbal part is marked *mf*. The score includes various musical notations like notes, rests, and articulation marks.

Handwritten musical score for the second system, featuring a piano and snare drum parts. The piano part includes dynamic markings such as *poco a poco dim.*, *poco cresc.*, and *8va*. The snare drum part is marked *(snare dr.)* and *poco cresc.*. The score includes various musical notations like notes, rests, and articulation marks.

Handwritten musical score for the third system, featuring a piano and guitar parts. The piano part includes dynamic markings such as *al mpp*, *al ff*, *p*, *ff*, *loco*, and *8va*. The guitar part is marked *piano, el. guitar + el. organ*. The score includes various musical notations like notes, rests, and articulation marks.

4

piano, el. guitar,
el. organ

p

p el. bass

poco

p

p

mp

pp

pp

mp (piano only)
(loco)

mp *pp*

mp *pp* *loco*

8va

molto

5

mp dolce

el. guitar only

mp dolce

piano (only)

mpp

el. organ

el. guitar out

8va. *pp* *br.*

el. organ

gliss.

+ el. bass (loco)

8va. *mp*

(big) Cymb. *mp* *l.v.*

8va. *pp* *br.*

el. organ

el. bass

8va. *mp* *l.v.*

8va. *pp* *br.*

el. organ

8va. *pp* *br.*

piano (only) 8va

pp

6

8va.

8va.

+ el. guitar

(piano)

mp

Bassdrum

p

etc.

f marc.

loco.

÷ piano

mp

mp

p sub.

+ piano

mf

loco

piano + el. bass

÷ el. bass

f sub.

8va

dim. al

dim. al

gua gliss. molto lento piu gliss

cresc. al

piano + el. guit. mpp cresc. al

(dim.) al mpp cresc. al

(dim.) al mpp

f loco cresc. al

+ el. piano + el. gt. poco

+ el. gt. + el. piano

rit. molto ⑦ meno mosso $\text{♩} = \text{ca. } 88$

ff

el. organ (only) dolce

(loco) pp dolce

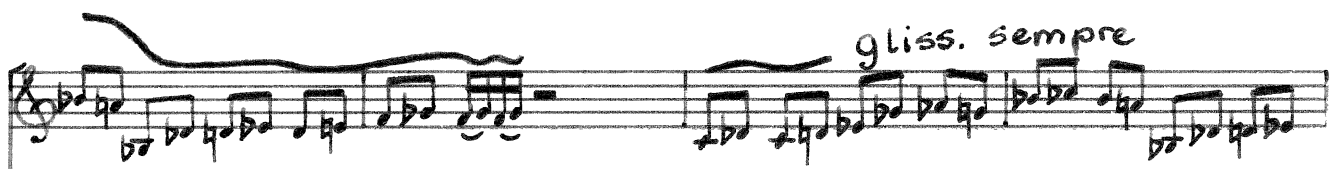
+ piano

Handwritten musical score for the first system. The top staff is a treble clef with a complex melodic line. The middle staff is a bass clef with a similar complex line. The bottom staff contains rhythmic patterns marked with 'x'.

Handwritten musical score for the second system. The top staff is a treble clef. The middle staff is a bass clef with a watermark that reads "NB noter This music is copyright protected". The bottom staff contains rhythmic patterns marked with 'x'.

Handwritten musical score for the third system. The top staff is a treble clef with markings "believe" and "gliss" above it, and "mpp sub." below. A circled number "9" is present. The middle staff is a bass clef with markings "el. organ only legato" and "f" below. The bottom staff contains rhythmic patterns marked with 'x' and "f" below.

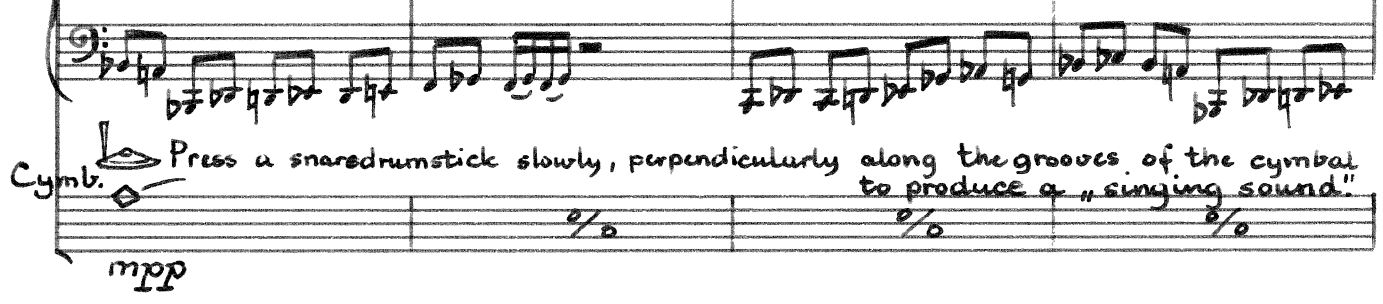
gliss. sempre



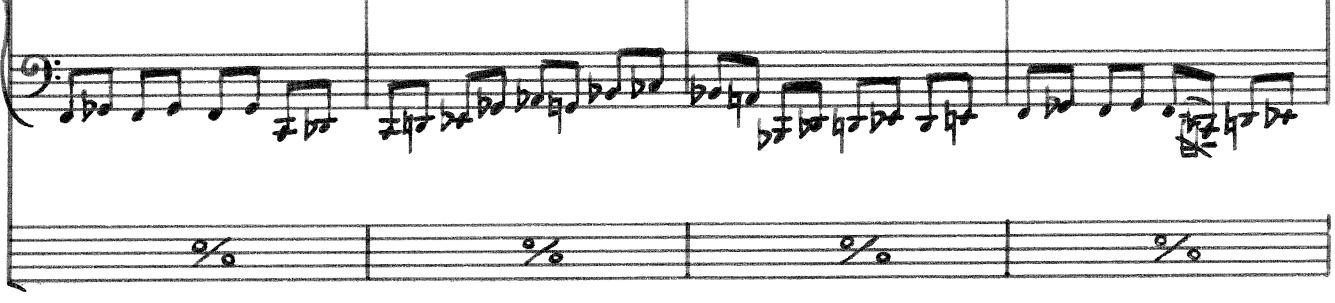
piano only (legato)
mp



Cymb. Press a snaredrumstick slowly, perpendicularly along the grooves of the cymbal to produce a "singing sound."
mp



Watermark: NBBater, All rights reserved. Music is copyright protected.



Handwritten musical score system 1. It consists of a treble clef staff with a melodic line, a bass clef staff with a bass line, and a grand staff with a piano accompaniment. The piano part features a complex rhythmic pattern with many accidentals. There are four measures, each ending with a fermata-like symbol (a circle with a slash).

Handwritten musical score system 2. It features a treble clef staff with a melodic line, a bass clef staff with a bass line, and a grand staff with a piano accompaniment. The piano part has a steady eighth-note accompaniment. There are four measures, each ending with a fermata-like symbol. A watermark 'NB Inter' is visible across the system. Performance markings include '(mpp)' in the treble and bass staves.

Handwritten musical score system 3. It features a treble clef staff with a melodic line, a bass clef staff with a bass line, and a grand staff with a piano accompaniment. The piano part has a steady eighth-note accompaniment. There are four measures. Performance markings include 'nongliss.', 'poco accel.', 'molto aggress.', and 'poco a poco dim. al. p'. At the bottom, there are markings for 'sn. dr.' and 'bass dr.' with rhythmic notation.

Handwritten musical notation for a drum set, showing various drum symbols (snare, tom, cymbal) and their rhythmic placement across four measures.

Handwritten musical notation for piano and electric piano. The piano part features a melodic line with dynamics *p*, *mp*, and *piano*. The electric piano part features a rhythmic accompaniment with dynamics *el. piano* and *leggero piano only*.

Handwritten musical notation for cymbals, labeled "Cymb. (ord.)". It shows rhythmic patterns with dynamics *p* and *l.v.* (livelier).

Handwritten musical notation for a horn section, labeled "f sub.". It features melodic lines with dynamics *f* and *p*.

Handwritten musical notation for a saxophone section, labeled "stacc. sempre". It features a fast, rhythmic melodic line with a staccato articulation throughout.

Handwritten musical notation for a horn section, labeled "f sub.". It features melodic lines with dynamics *f* and *p*.

Handwritten musical notation for piano and electric piano. The piano part features a melodic line with dynamics *el. piano* and *piano*. The electric piano part features a rhythmic accompaniment with dynamics *el. piano* and *piano*.

Handwritten musical notation for cymbals, labeled "Cymb. p". It shows a rhythmic pattern with a dynamic of *p*.

Handwritten musical score for measures 15-18. It features a grand staff with treble and bass clefs, and a separate line for guitar. The music is in a complex key signature with many sharps and flats. Dynamics include 'p' and 'f'. The guitar part is marked 'i.v.'.

11 ♩ = ca. 112

Handwritten musical score for measures 11-12. It features a grand staff with treble and bass clefs, and a separate line for guitar. The music is in a complex key signature. Dynamics include 'mf intenso', 'poco', 'p', and 'cresc.'. The guitar part is marked 'el. bass + piano (pizz.)' and 'sim.'. There is a watermark 'IMB Peter' and 'this music is copyright protected'.

Handwritten musical score for measures 13-15. It features a grand staff with treble and bass clefs, and a separate line for guitar. The music is in a complex key signature. Dynamics include 'a poco cresc.', 'piano', and 'tel. guitar'.



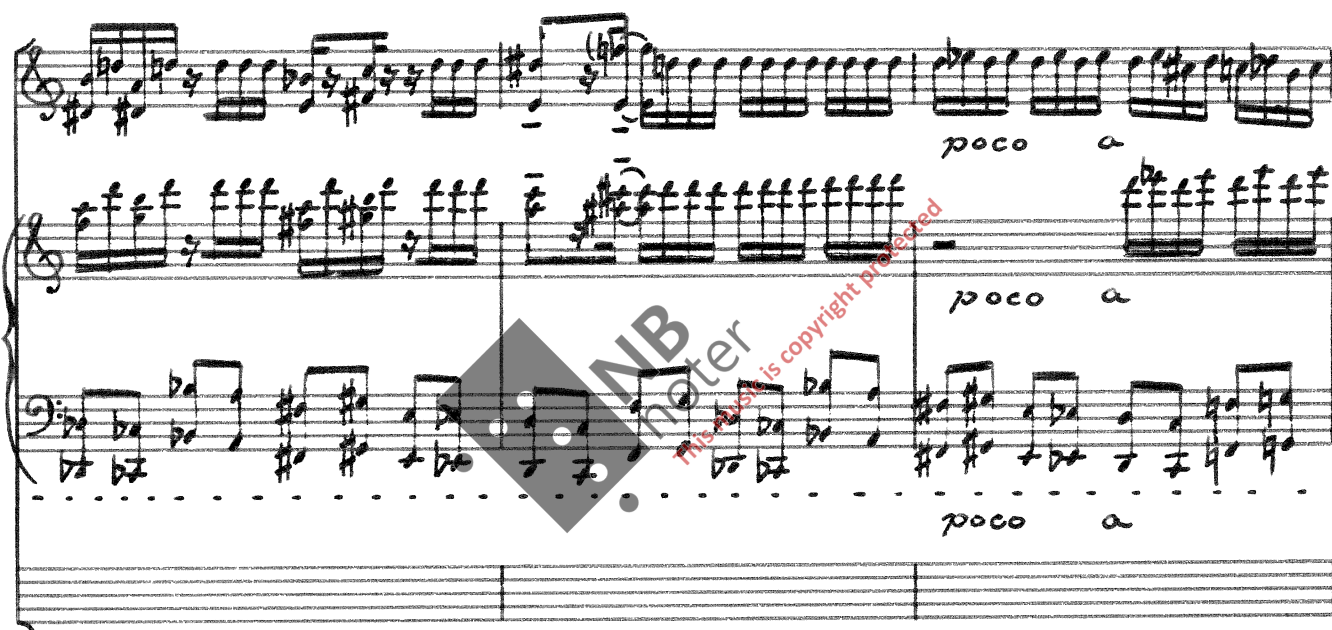
el. piano only

mp *cresc.* *ff*

mp *cresc.* *ff*

piu dim.

This system contains three staves of music. The top staff is a single melodic line. The middle and bottom staves are a grand staff. The music features dynamic markings of *mp*, *cresc.*, and *ff*. The bottom staff includes the instruction *piu dim.*



poco a

poco a

poco a

This system contains three staves of music. The top staff has a melodic line with a *poco a* marking. The middle and bottom staves are a grand staff, with the bottom staff also marked *poco a*. A large watermark is present across the center of the system.



poco dim. al - -

poco dim. al - -

poco dim. al - -

This system contains three staves of music. The top staff has a melodic line with a *poco dim. al - -* marking. The middle and bottom staves are a grand staff, with the bottom staff also marked *poco dim. al - -*. The music concludes with a double bar line.

poco rit.

Musical score for the first system. It consists of three staves. The top staff is a treble clef with a double bar line and some notes. The middle staff is a grand staff (treble and bass clefs) with a melodic line and accompaniment. The bottom staff is a percussion staff with rhythmic notation. Handwritten annotations include "poco" under the top staff, "al mpp" above the middle staff, and "al mpp" below the middle staff. At the end of the system, it says "percussion out." with a double bar line.

12) poco meno mosso $\text{♩} = \text{ca. } 102$

Musical score for the second system. It features three staves. The top staff is empty. The middle staff is a bass clef with notes and rests, annotated with "(el. organ)" and "+ el. guitar". The bottom staff is a bass clef with notes and rests, annotated with "el. bass (piano only)". A dynamic marking "mpp" is placed between the middle and bottom staves. A large watermark "NB Water" is visible across the score.

Musical score for the third system. It features three staves. The top staff is empty. The middle staff is a bass clef with notes and rests, annotated with "(poco)" and "3" under a bracket. The bottom staff is a bass clef with notes and rests, annotated with "Cymb. - l.v." and "3" under a bracket. A dynamic marking "p" is placed below the bottom staff.

con sord. mf espr.

3

3

3

l.v.

l.v.

poco

3

3

3

3

l.v.

senza sord. molto ff

3

3

3

3

l.v.

Sul tasto

mpp

8va

8va

1. v.

1. v.

1. v.

⑬ Accellerando poco a poco

poco a poco cresc.

poco a poco cresc.

+ el. bass

poco a poco cresc.

poco a poco cresc.

1. v.

Musical staff with treble clef, key signature of two sharps (F# and C#), and a 3/4 time signature. It contains a melodic line with a triplet of eighth notes and a dotted quarter note.

Two staves for piano accompaniment. The upper staff is marked '2va' and contains a melodic line with a triplet. The lower staff is marked '8va' and contains a rhythmic accompaniment of eighth notes.

A single staff with a treble clef, containing a triplet of eighth notes and a first ending bracket labeled '1.v.'.

Musical staff with treble clef, key signature of two sharps, and a 3/4 time signature. It contains a melodic line with a triplet of eighth notes.

Two staves for piano accompaniment. The upper staff is marked '8va' and contains a melodic line with a triplet. The lower staff is marked '8va' and contains a rhythmic accompaniment of eighth notes.

A single staff with a treble clef, containing a triplet of eighth notes and a first ending bracket labeled '1.v.'.

Musical staff with treble clef, key signature of two sharps, and a 3/4 time signature. It features a series of sixteenth-note chords. The dynamic marking is *al - ff*. A circled number '14' is written above the staff. The word 'CADENZA' is written vertically to the right.

atempo primo

Two staves for piano accompaniment. The upper staff is marked '8va' and contains a melodic line. The lower staff is marked '8va' and contains a rhythmic accompaniment of eighth notes.

A single staff with a treble clef, containing a triplet of eighth notes and a first ending bracket labeled '1.v.'. The dynamic marking is *molto cresc.* leading to *ff*.

CADENZA piano only

15

Musical score for the first system, featuring a treble clef staff with complex rhythmic patterns and a bass clef staff with a few notes. The bass clef staff is labeled "8va" and includes a dynamic marking "p".

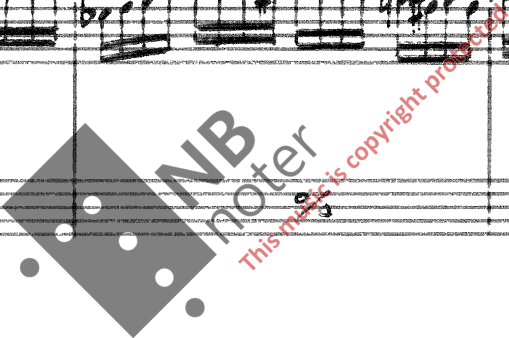
Musical score for the second system, starting with the tempo marking "meno mosso" and a quarter note equal to approximately 100 (♩ = ca. 100). It includes dynamic markings such as "p", "mp", and "f molto". A large watermark "NB noter" is overlaid on the score, along with the text "This music is copyright protected".

Musical score for the third system, including a guitar part with a "pizz." (pizzicato) marking and a "snaredrum" part with "x" marks. The guitar part has a dynamic marking "pp" and includes the instruction "el. gt. only (very short)".

Musical score system 1. It consists of three staves. The top staff is a single treble clef staff with a key signature of one sharp (F#) and a common time signature (C). It contains a melodic line with eighth and sixteenth notes, some with accents (>). The middle staff is a grand staff (treble and bass clefs) with a key signature of one sharp and a common time signature. It contains a piano accompaniment with dense sixteenth-note patterns in the right hand and a simple bass line in the left hand. The bottom staff is a single bass clef staff with a key signature of one sharp and a common time signature, containing a simple bass line with some rests. The system is divided into three measures.

Musical score system 2. It consists of three staves. The top staff is a single treble clef staff with a key signature of one sharp and a common time signature. It contains a melodic line with eighth and sixteenth notes, some with accents (>). The middle staff is a grand staff (treble and bass clefs) with a key signature of one sharp and a common time signature. It contains a piano accompaniment with dense sixteenth-note patterns in the right hand and a simple bass line in the left hand. The bottom staff is a single bass clef staff with a key signature of one sharp and a common time signature, containing a simple bass line with some rests. The system is divided into three measures.

Musical score system 3. It consists of three staves. The top staff is a single treble clef staff with a key signature of one sharp and a common time signature. It contains a melodic line with eighth and sixteenth notes, some with accents (>). The middle staff is a grand staff (treble and bass clefs) with a key signature of one sharp and a common time signature. It contains a piano accompaniment with dense sixteenth-note patterns in the right hand and a simple bass line in the left hand. The bottom staff is a single bass clef staff with a key signature of one sharp and a common time signature, containing a simple bass line with some rests. The system is divided into three measures.



arco

Violin part: *arco*, *ff*, *mf*

Guitar part: *el. gt.*, *piano*, *mf*

(16)

Violin part: *pp*, *al. piano*, *piano*

Guitar part: *pp*, *piano*, *el. piano*, *etc.*

Cymbal part: *Cymb.*, *P*

Lyrics: *Siva*

Violin part: *poco a poco cresc.*

Guitar part: *poco a poco cresc.*, *piano*, *mp*, *mf*

Cymbal part: *p*, *mp*, *mf*

rit. al ⁽¹⁷⁾ - - ♩ = ca. 76

al-*f* m_{pp} marcato

al-*f* m_{pp}

8va

5 Tom-toms
+ bassdrum

m_{pp} (bass dr.)

8va l.v. l.v.

el. piano

m_{pp} stacc.

8va

l.v. etc. l.v.

poco a poco cresc.

poco a poco cresc.

poco a poco cresc.

al - *f*

el. piano *legato*
+ el. git. *gua* *pp* sub.

al - *f*

gua poco a poco cresc. *piu f*

poco a poco cresc. *piu f*

18 poco a poco accel. al - -

Musical staff with chords and accidentals, including sharps and flats.

gliss. lento

Musical staff with notes and dynamics: *8va piu cresc. al* and *piu cresc. al*.

Musical staff with chords and dynamics: *8va piu cresc. al*.

Musical staff with notes and dynamics: *(cresc.)* and *♩ = ca. 96*.

Musical staff with notes and dynamics: *ff*.

Musical staff with notes and dynamics: *ff*.

Musical staff with notes and dynamics: *ff*.

Musical staff with notes and dynamics: *ff*, *Cymb. (small) l.v.*, and *(big) l.v.*.

sub. ♩ = 192 rit. molto al ♩ = ca. 126

Musical staff with notes and dynamics: *ff*.

Musical staff with notes and dynamics: *piano*.

Musical staff with notes and dynamics: *piano* and *8va*.

Musical staff with notes and dynamics: *f piu dim.*

(piano)

mf

mf

p

el. piano + el. bass

Tom-tom)

dim. - *al p*

(bass drum.)

mf molto espr.

el. guitar

gliss. molto lento

l. v.

mp

pp

etc.

gliss.
piano poco a
mp poco a
poco a

poco dim. al p
poco dim. al p
poco cresc. al mp
poco a poco cresc.

el. guitar plays the same as the violin until 21

20
f poco a poco cresc.
+ el. organ
+ el. piano + piano poco a poco cresc.
poco a poco cresc.

This page contains musical notation for a piano and guitar arrangement. It is organized into four systems. Each system consists of three staves: a vocal line in the upper staff (treble clef), a piano accompaniment in the middle (grand staff), and a guitar accompaniment in the lower staff (treble clef). The piano accompaniment is highly detailed, featuring complex chordal textures and arpeggiated patterns. The guitar accompaniment includes chords and rhythmic patterns, with some notes marked with 'x' and 'y' symbols. A watermark 'NB Water' is overlaid on the central part of the page, along with the text 'This music is copyright protected'.

21

al - - ff

el. guitar

al - - ff

el. organ building up a cluster in the same rhythm

al - - ff

p sub. molto cresc. al - -

al - - ff

Cymb. l.v. (bass drum)

p molto cresc. al - -

ff

piano + el. organ + el. guitar

al - - ff

Bva

al - - ff

Cymb. (secco)

(Tom-toms)

al - - ff

(bass-drum)

arco

gliss. pizz. (arco)

loco

tom tom tom

Snare-dr.

(ff)