

# A LUMBERJACK SONG

FOR

(Score in C)

## SAW AND SYMPHONY ORCHESTRA

KETIL HVOSLEF-08-09

$\downarrow = ca. 120$

Flauto grande I  $\text{C}$

Flauto grande II  $\text{C}$   
(anche Fl. picc.)

Oboe  $\text{C}$

Clarinetto in B $\flat$  I  $\text{C}$   
(notazione in C)

Clarinetto basso  $\text{C}$   
(notazione in C)

Corno in F I  $\text{C}$   
(notazione in C)

Corno in F II  $\text{C}$   
(notazione in C)

Tromba in C  $\text{C}$   
(o in B $\flat$ , ma notazione in C)

Trombone  $\text{C}$

Tuba  $\text{C}$

Percussione  $\text{C}$   
(One player) {

Timpani  $\text{C}$

Pianoforte  $\text{C}$

Serra Sola (Saw Solo)  $\text{C}$   
mallet (very hard)  
Aprox. pitch  
gliss.  
gliss.  
gliss.

Violini I  $\text{C}$   
div. in 3  
gliss.

Violini II  $\text{C}$   
div. in 2  
gliss.


Viola  $\text{C}$   
div. in 2  
gliss.

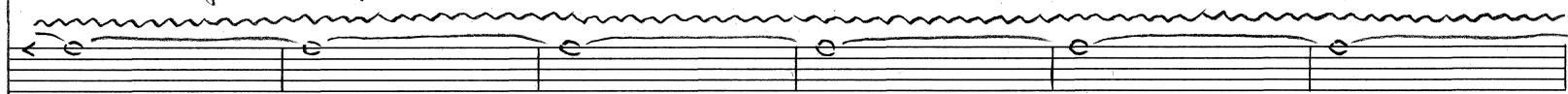
Violoncelli  $\text{C}$

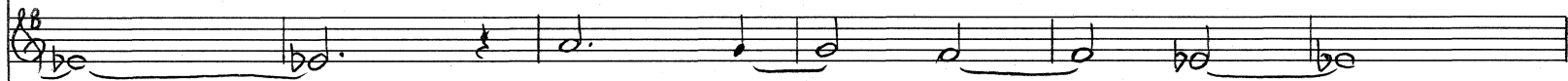
Contrabassi  $\text{C}$

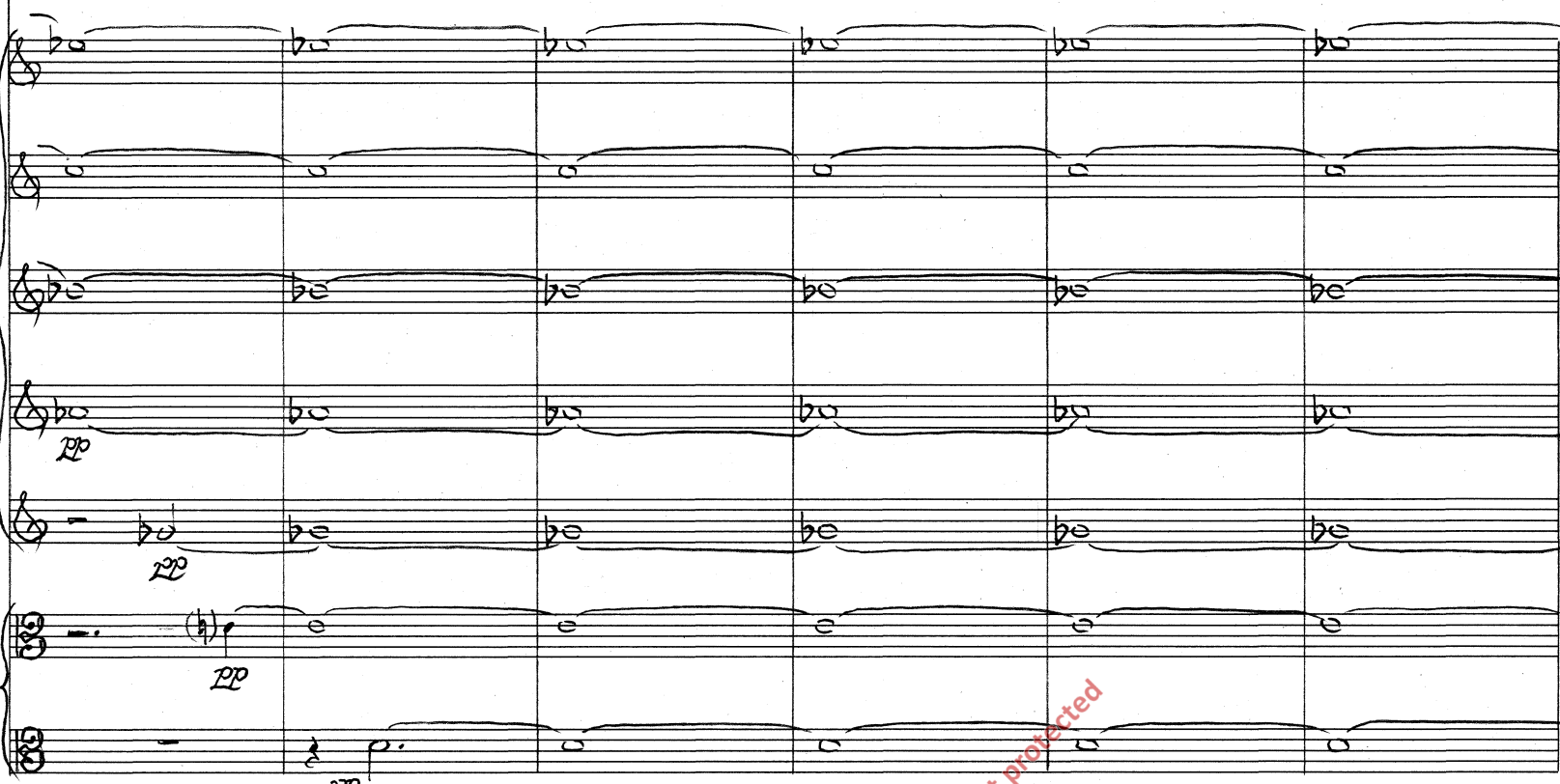
2.

P.F. 
  
 Piatto (Susp.) 
  
 S.S. 
  
 Vln. I div. 
  
 Vln. II div. 
  
 Vle. div. 
  
 P.F. 
  
 Piatto 
  
 S.S. 
  
 Vln. I 
  
 Vln. II 
  
 Vle.


P.F. 

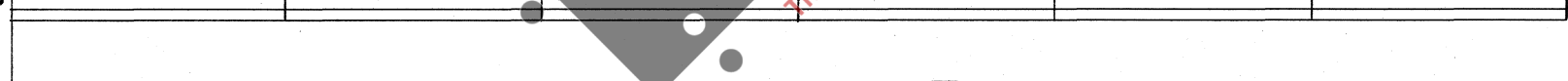
Piatto 

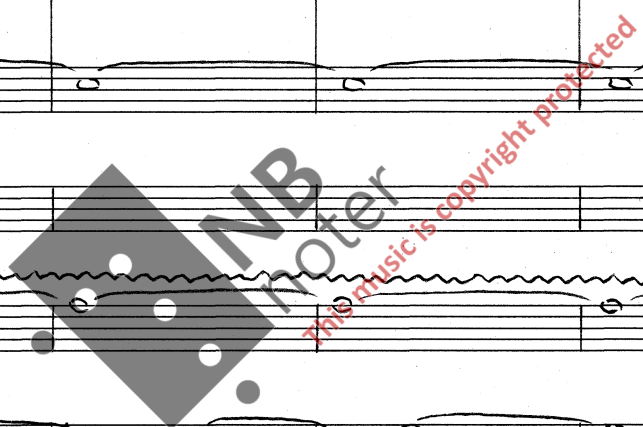
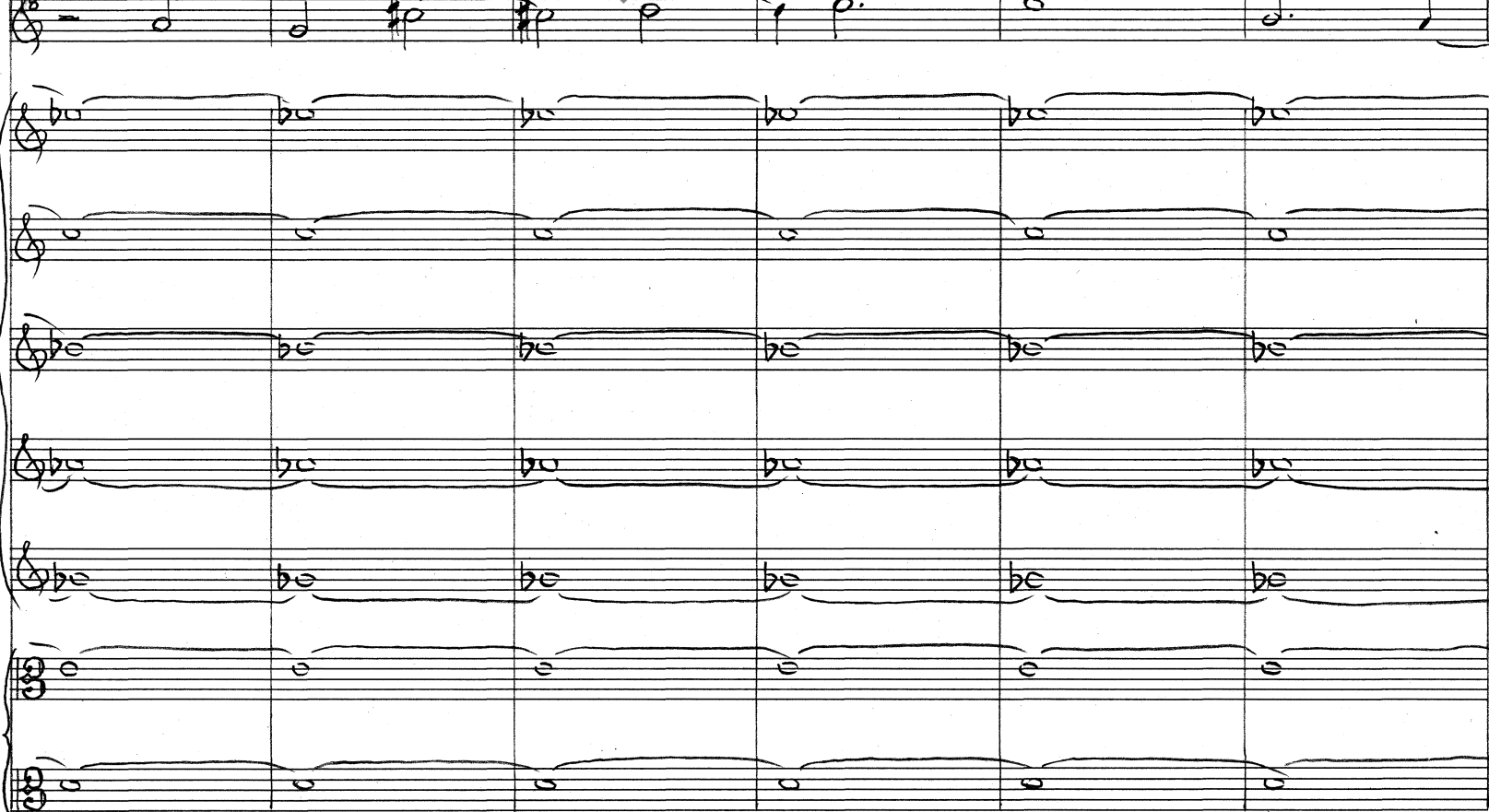
S.S. 



*pp* *pp* *pp*

Piatto 

S.S. 



4.

P.F. 

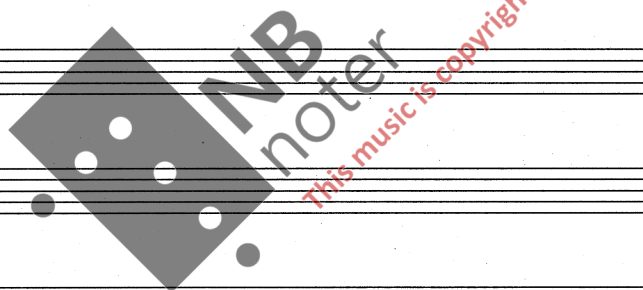
Piatta   
(pp)

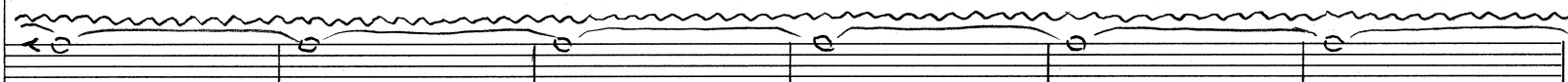
S.S.   
(p)


Vln. I div.   
1. (pp)  
2. (pp)  
3. (pp)

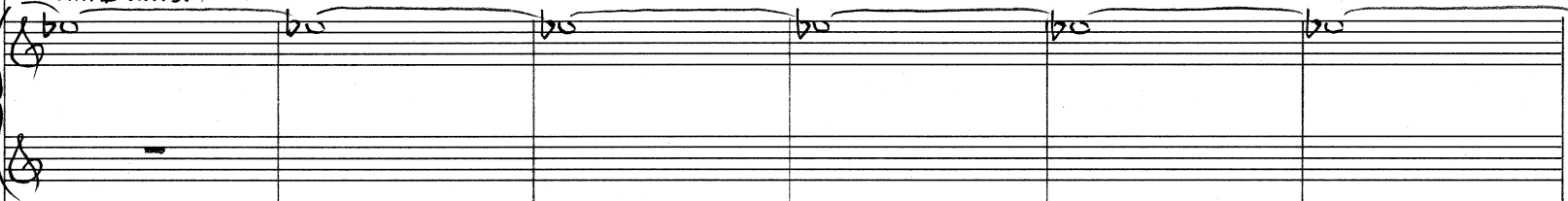
Vln. II div.   
1. (pp)  
2. (pp)

Vle. div.   
1. (pp)  
2. (pp)



Piatta   
(pp)

S.S. 

Vln.   
I (Vln. I unis.)  
II

Fl. picc. Flauto piccolo

Clar. I Clarinetto I

P.F. Pianoforte

Piatto

S.S. gliss. mallet (hard)

I Vln. pizz. mf

Clar. I

P.F.

S.S. arco (bow) *Espressivo* Stop bowing div.

I Vln. mf

6.

Fl. picc. *8va* *f* *3* *3* *3* *3*

Oboe *p* *3*

Clar. I *pp* *3* *3* *3* *3*

Tromba *con sord.* *p* *3*

P.F. *8va* *f* *3* *3* *3* *3*

S.S. *mallet* *p* *gliss.* *f* *3* *3* *3* *arco (bow)* *p espr.* *3*

I Vln.

II Vln.

Fl. picc. *8va* *f* *3* *3* *3* *3* *muta in Fl. gr. II*

Oboe *p* *3*

Clar. I

Tromba *(con sord.)* *p* *3*

P.F. *8va* *f* *3* *3* *3* *3*

S.S. *3* *3* *3* *3* *Stop bowing* *mallet* *p* *gliss.* *f* *3* *3* *3*

I Vln. *(Tutti) pizz.* *mf*

II Vln. *mf*

Fl. gr. I

Fl. gr. II

P.F.

S.S. arco (bow) *p espr.* stop bowing

I Vln. *mf*

II Vln. *mf*

Vle. pizz. *mf*

Fl. gr. I

Fl. gr. II

P.F.

S.S. mallet *f* (*f*)

I Vln.

II Vln.

Vle.

Musical score for page 8, featuring various instruments including Flutes, Cori, Trbn., Tuba, P.F., S.S., Vln., Vla., Clarinet, and 2 Corni. The score includes dynamic markings such as *mf*, *f*, and *p*, and includes a large watermark reading "NB noteforthis music is copyright protected".

Fl. gr. I  
Fl. gr. II  
Cor. I  
Cor. II  
Trbn.  
Tuba  
P.F.  
S.S.  
Vln. I  
Vln. II  
Vla.  
Fl. gr. I  
Fl. gr. II  
Clar. I  
2 Cor. I  
2 Cor. II  
Trbn.  
Tuba  
S.S.



Fl. gr. I

Fl. gr. II *Muta in Fl. piccolo*

Clar.

2 Cor. I

2 Cor. II

Trbn.

Tuba

P.F. *Pianoforte* *legato*

S.S.

Detailed description: This system contains the first five staves of the score. Fl. gr. I has a whole rest. Fl. gr. II plays a melodic line with triplets and a dynamic marking of *f*. Clarinet plays a similar melodic line with triplets and a dynamic marking of *f*. The two Cor Anglais and Tuba parts are whole rests. The Piano part features a complex, rapid melodic line with many triplets, marked *Pianoforte* and *legato*. The String section (S.S.) has a whole rest.

Fl. gr. I

Clar.

P.F.

Piatto

S.S.

Vln. I arco

Vln. II arco

Vle. arco

V. Celli

C.B. Bassi

Detailed description: This system contains the next five staves. Fl. gr. I and Clarinet continue their melodic lines with triplets. The Piano part continues with its complex triplet-based melody. The Harp (Piatto) part has a whole rest. The String section (S.S.) has a whole rest. The Violin I and II parts enter with an *arco* (bowed) section, playing a rhythmic accompaniment with triplets. The Viola part also enters with an *arco* section. The Cello and Bass parts have a whole rest.

Flauto  $\leftarrow$   $\overline{\text{e}}$   $\overline{\text{f}}$   $\overline{\text{g}}$   $\overline{\text{a}}$   $\overline{\text{b}}$   $\overline{\text{c}}$   
 (P)

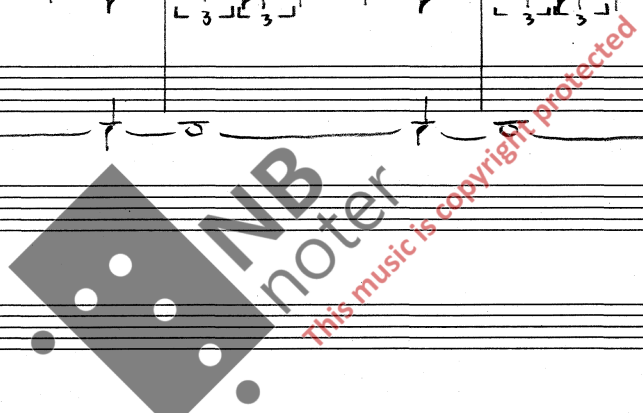
S.S.  $\text{f}$   
 $\text{f}$   $\text{g}$   $\text{a}$   $\text{b}$   $\text{c}$   $\text{d}$   $\text{e}$   $\text{f}$

Vln. I (P)  $\text{f}$   $\text{g}$   $\text{a}$   $\text{b}$   $\text{c}$   $\text{d}$   $\text{e}$   $\text{f}$

Vln. II (P)  $\text{f}$   $\text{g}$   $\text{a}$   $\text{b}$   $\text{c}$   $\text{d}$   $\text{e}$   $\text{f}$

Vle. (P)  $\text{f}$   $\text{g}$   $\text{a}$   $\text{b}$   $\text{c}$   $\text{d}$   $\text{e}$   $\text{f}$

V.C. C.B. (8)  $\text{f}$   $\text{g}$   $\text{a}$   $\text{b}$   $\text{c}$   $\text{d}$   $\text{e}$   $\text{f}$



Flauto  $\leftarrow$   $\overline{\text{e}}$   $\overline{\text{f}}$   $\overline{\text{g}}$   $\overline{\text{a}}$   $\overline{\text{b}}$   $\overline{\text{c}}$

S.S.  $\text{f}$   $\text{g}$   $\text{a}$   $\text{b}$   $\text{c}$   $\text{d}$   $\text{e}$   $\text{f}$

Vln. I  $\text{f}$   $\text{g}$   $\text{a}$   $\text{b}$   $\text{c}$   $\text{d}$   $\text{e}$   $\text{f}$

Vln. II  $\text{f}$   $\text{g}$   $\text{a}$   $\text{b}$   $\text{c}$   $\text{d}$   $\text{e}$   $\text{f}$

Vle.  $\text{f}$   $\text{g}$   $\text{a}$   $\text{b}$   $\text{c}$   $\text{d}$   $\text{e}$   $\text{f}$

V.C. C.B. (8)  $\text{f}$   $\text{g}$   $\text{a}$   $\text{b}$   $\text{c}$   $\text{d}$   $\text{e}$   $\text{f}$

Clarinetto

Clar. I *p dolce* *gliss.*

Piatta *l.v.*

S.S. *pp.* *gliss.*

Vln. I *pizz.* *mp* *f*

Vln. II *mp* *pizz.*

Vle. *mp*

V.c. C.B.

Clar. I *p dolce* *gliss.*

S.S. *gliss.*

Vln. I *f*

Vln. II *f*

Vle. *pizz.* *mp*

V.Celli *V.Celli pizz.* *(C.B. tacit) mp*

This musical score page includes the following parts and markings:

- Clarinet (Clar.):** Features glissando markings and a dynamic marking of *p dolce*.
- Clarinet Basso (Clar. Basso):** Features a glissando marking and a dynamic marking of *p dolce*.
- Pianoforte (P.F.):** Features a dynamic marking of *pp* and a *Secco* marking.
- Tamburino:** Features a dynamic marking of *p*.
- Soprano Saxophone (S.S.):** Features glissando markings and dynamic markings of *f* and *p*.
- Violins (Vln. I & II):** Features dynamic markings of *f* and *p*.
- Viola (Vle.):** Features dynamic markings of *f* and *p*.
- Violoncello (V.C.):** Features dynamic markings of *f* and *p*.

The score is marked with a large watermark: "NB noter This music is copyright protected".



2 Cor. I  
II  
(f)

Piatto  
← Piatto  
mp

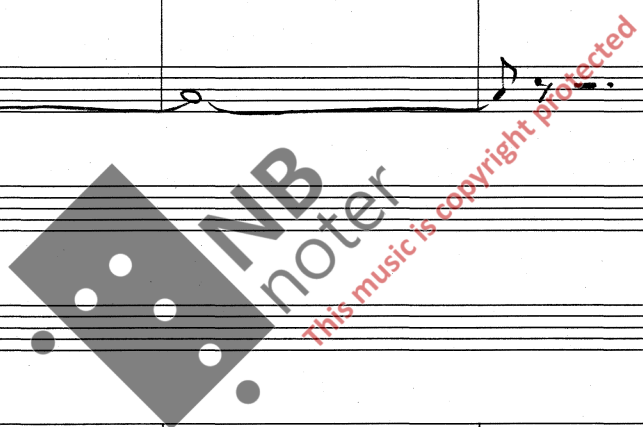
S.S.  
mallet (very hard)  
f

Vln. I arco  
II  
ff marcato

Vle.  
(f)

V.C.  
(f)

C.B.  
(p)



Piatto  
(mp)

S.S.  
(f) gliss.  
ff

Vln. I  
(ff)

Handwritten musical score for a symphony orchestra, page 15. The score includes staves for 2 Cor. I & II, Piatto, S.S., Vln. I & II, Vle. div., V.C., C.B., Oboe, and a second set of 2 Cor. I & II, Piatto, S.S., Vln. I & II, Vle. div., V.C., and C.B. The notation is handwritten and includes various dynamics and performance instructions.

**First System:**

- 2 Cor. I & II:** *2 Cor.*, *p*
- Piatto:** *tr*, *p*
- S.S.:** *p sub.*
- Vln. I & II:** *p sub.*, *Vln. II arco*, *p*
- Vle. div.:** *p*
- V.C.:** *V.C.*, *p*
- C.B.:** *C.B.*, *p*

**Second System:**

- Oboe:** *Oboe*, *p*
- 2 Cor. I & II:** *p*
- Piatto:** *l.v.*
- S.S.:** *(p)*, *mallet (softer)*, *f*
- Vln. I & II:** *p leggero*
- Vle. div.:** *p*
- V.C.:** *p*
- C.B.:** *p*

Oboe (P)

Timp. *tr.*  
*pp* *cresc. poco a poco* *al p*

S.S. (P)

I Vln. (P)  
II Vln. (P)

Vle. (P)

C.B. (P)

Oboe

Timp. *dim. poco a poco* *al niente* *gliss.*

S.S.

I Vln.  
II Vln.

C.B.

The musical score for page 16 consists of several staves. The Oboe part starts with a dynamic marking of *pp* and a *tr.* (trill) instruction. The Timpani part features a *tr.* (trill) and dynamic markings of *pp*, *cresc. poco a poco*, and *al p*. The S.S. (Soprano Saxophone) part begins with a dynamic marking of *pp*. The Violin I and II parts are marked *pp*. The Viola part is marked *pp*. The C.B. (Cello/Bass) part is marked *pp*. The second system of staves includes an Oboe part, a Timpani part with dynamic markings of *dim. poco a poco* and *al niente*, and a S.S. part with a *gliss.* (glissando) instruction. The Violin I and II parts continue with their melodic lines. The C.B. part continues with its bass line. A large watermark for 'NB noter' is visible across the middle of the page.



Fl. picc. *p* *ff* *ff* *p* *ff* *sim.*

Clar. Basso *p* *ff* *ff* *p* *ff* *sim.* *Muta in Clar. II*

Tromba *p* *ff* *ff* *p* *ff* *sim.*

Trombone *p* *ff* *ff* *p* *ff* *sim.*

Tamb. picc. *p* *ff* *ff* *p* *ff* *sim.*

S.S. *p* *ff* *ff* *p* *ff* *sim.*

I. *p* *ff* *ff* *p* *ff* *sim.*

II. *p* *ff* *ff* *p* *ff* *sim.*

Vle. *p* *ff* *ff* *p* *ff* *sim.*

C.B. *p* *ff* *ff* *p* *ff* *sim.*

*Subs.*

Clar. Basso *pp*

S.S. *mf* *pp* *l.v.*

Vle. *Viole con sord.* *pp*

V.C. *V. Celli con sord.* *pp*

C.B. *pp*

Tom-tom grande

mf

sawing rythmically on a piece of wood

I Vln.

II Vln. II con sord.

Vle. (pp)

V.C. (pp)

C.B. (pp)



T.-t.gr.

mf

(f)

Vln. I con sord.

I Vln.

II Vln.

Vle.

V.C.

C.B.

The image shows two systems of handwritten musical notation. Each system consists of several staves:

- Top Staff (Guitar):** Features a tremolo effect indicated by a wavy line above the notes. The dynamic marking is *mf*.
- Second Staff (S.S. - String Section):** Labeled "S.S." on the left. It contains a series of notes with "x" marks below them, indicating natural harmonics. The dynamic marking is *(f)*.
- Third and Fourth Staves (Piano):** A grand staff with treble and bass clefs. The piano part features a sequence of chords and single notes, primarily in the right hand.

A large watermark "NB noter" is centered on the page, with the text "This music is copyright protected" written in red below it.

T-t.gr. *mf* *tr*  
 S.S. (s.r.) *f*  
 I Vln. *pp*  
 II Vln. *pp*  
 Vle. *pp*  
 V.C. *pp*  
 C.B. *pp*  
 Fl. gr. I  
 Clar. *p*  
 Oboe *p*  
 Tromba *p* *con sord.*  
 Woodblock *p*  
 S.S.  
 I Vln. *senza sord.*  
 II Vln. *senza sord.*  
 Vle. *senza sord.*  
 V.C. *senza sord.*  
 C.B.

Fl. picc. Flauto piccolo *f*

Fl. gr. I

Oboe

Clar.

Tromba

W. bl.

S.S. arco (bow) *f*

Vln. I pizz. (senza sord.) *f*

Vln. II pizz. (senza sord.) *f*

Fl. picc.

Fl. gr. I

Oboe

Clar.

Tromba

W. bl.

S.S.

Vln. I

Vln. II

22.

Fl. picc. *(f)*

Fl. gr. I *(p)*

Oboe *(p)*

Clar. *(p)*

Trb. *(p)*

S.S. *(f)*

Vln. I *(pizz.)*

Vln. II *(f)*

Fl. picc. *(p)*

Fl. gr. I *(p)*

Oboe *(p)*

Clar. *(p)*

Trb. *(p)*

S.S. *(p)*

Vln. I *(p)*

Vln. II *(p)*

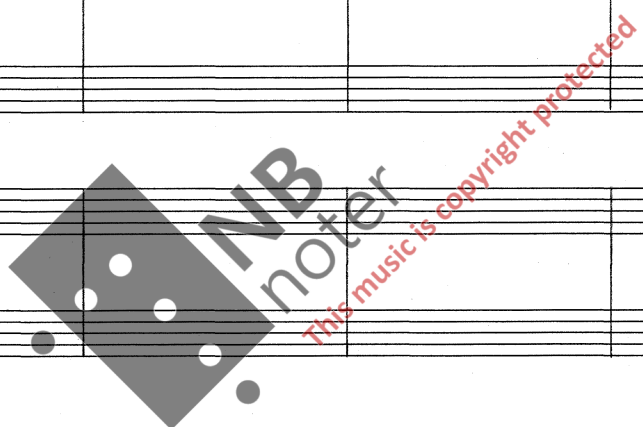
Fl. picc. *pp*

Fl. gr. I

Oboe

Clar.

Tromba



S.S.

I

II

Vln.

Vle.

V.C.

C.B.

V. Celli senza sord.

*pp*

Fl. gr. I (p)

Oboe (p)

Clar. (p)

Tromba (p)

Tuba con sord. (p)

Gr. Cassa

S.S. mallet (very hard) approx. pitch ff mp p

Vle. (p)

V.C. (p)

C.B. (p)

NB noter  
This music is copyright protected



Fl. gr. I

Oboe

Clar.

Trb.

Trbn. *con sordi*

Tuba

Gr. C.

*mp*

*pp*

*cresc. poco a poco*

S.S.

*ff*

*mp*

*pp*

*(stacc.)*

Vln. I

Vln. II

Vle.

V.C.

C.B.

*Vln. II arco*

*mf*

*mf*

*mf*

*mf*



Handwritten musical notation for the first system, consisting of four staves. The top staff begins with a treble clef and a key signature of one flat (B-flat). The notation includes various note values, rests, and phrasing slurs.

Handwritten musical notation for the second system, consisting of three staves. The notation is characterized by dense rhythmic patterns, including many sixteenth and thirty-second notes, with some slurs and accents.



Gr. C.

Handwritten musical notation for the third system, consisting of a single staff. It features a wavy line above the staff and a long note with a fermata.

(.CADENZA")

Handwritten musical notation for the fourth system, consisting of a grand staff (treble and bass clefs). The notation includes a cadenza section marked with asterisks and various rhythmic patterns.

P.F. *p* *arco* *L.v.*

S.S. *arco (bow)* *f espr. (ma non troppo vib.)*

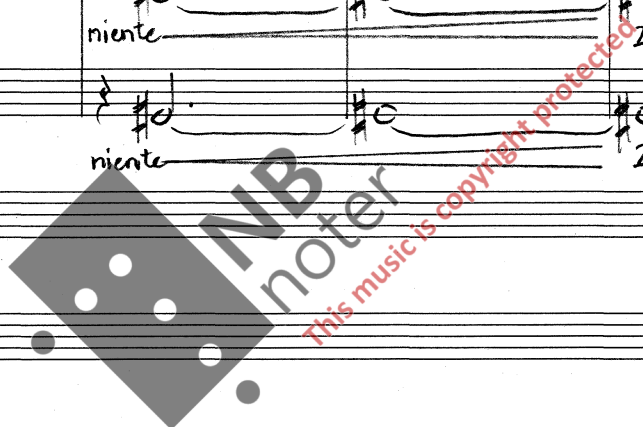
I Vln. niente *p*

II Vln. niente *p*

Vle. niente *p*

V.C. niente *p*

C.B. niente *p*



S.S.

I Vln.

II Vln.

Vle.

V.C.

C.B.

P.F. *l.v.*

Timpani *tr*

S.S. *ff*

Vln. I *gliss.* *f* *p*

Vln. II *gliss.* *f* *p*

Vle. *gliss.* *f* *p*

V.C. *gliss.* *f* *p*

C.B. *gliss.* *f* *p*



Timpani *mf* *dim.* *poco a poco* *al*

S.S. *dim.* *poco a poco* *al*

Vln. I

Vln. II

Vle.

V.C.

C.B. (8)

Musical score for the following instruments: Timp., S.S., Vln. I, Vln. II, Vle., V.C., and C.B. The score is written on a system of seven staves. The Timp. staff features a wavy line at the top and notes below, with a dynamic marking of *pp*. The S.S. staff contains a melodic line with a dynamic marking of *p*. The Vln. I and Vln. II staves show sustained notes with a dynamic marking of *p*. The Vle. staff contains sustained notes with a dynamic marking of *p*. The V.C. and C.B. staves show sustained notes with a dynamic marking of *p*. A watermark for 'NB noter' is present, along with the text 'This music is copyright protected'. The duration is noted as 'Durata: 10'10''.

Durata: 10'10''

