

Andante I.

VOICES

SOP. I

SOP. II

ALT.

Fløyte
Guitar

EL. Bass

Drums

Piano
synth.

mp opt. 8va basso

FLÖYTE

BELLS

Cym

VOICES

Fløyte
Guitar

Bass

Drums

Piano

mp

SOUL TO CALM ~

DAILY PSALM

THOUGHT RE-CLAIM

DAILY PSALM

A-AND

mp

mp

Cym/BELLS mp

FREELY ~

mp

DAILY

EACH

DAILY

DAILY

DAILY

5

VOICES

SOLO RECIT. / OUR DAY OF PRAISE IS DONE - THE EVENING SHADOWS FALL - BUT PASS NOT FROM US WITH THE SUN - TRU LIGHT THAT LIGHTNEST
 IND.S LET THY MERCIFULL KINDNES O'LOED BE UPON US LIKE AS WE PUT OUR TRUST IN THEE - AMEN -

Floyte Guitar

Bass

Drums

Piano

Gm9 -- FA9 -- Gm9 -- FA9 -- Gm9 -- FA9 -- Gm9 -- FA9 --

6

VOICES

COI SOP. 2

COI SOP. 2

ALL -

OU-R DAY OF PRAISE IS DONE THE EVE-NING SHA-DOWS FALL BUT PASS NOT FROM US WITH THE

Floyte Guitar

Bass

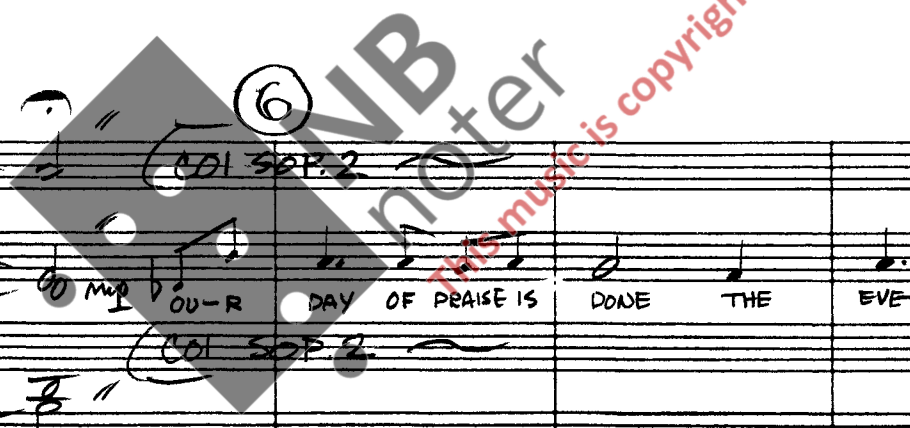
Drums

Piano

COI TENOR

Gm9 -- C13 -- FA -- FA9 -- Gm9 -- Gm6/9 -- C13 --

6



VOICES

SUN TRU LIGHT THAT LIGHT-NEST A-AL A-M-AROUND THE THRONE ON HIGH WHERE NIGHT CAN NE-VER BE THE WHITE ROSES HARD-ERS OF THE

Floyte Guitar

Bass

Drums

Piano

C7^{b9} G^bΔ FΔ Bm(Cm) F9 Bm7 A^bΔ G^bΔ Bm7 G^bΔ E^bm^b/₉ A^b13 A7+ Gm

mp f

VOICES

SKY BRING CEASE LESS HYMNS TO THEE FAINI OUR ANT-HEMS HERE TO-O SOON OF PRAISE WE TIRE BUT ON THE

Floyte Guitar

Bass

Drums

Piano

C^{b9} F^(b9) sus^(b9) F G^bΔ E^bm^b Gm A^bΔ G^b C^b Cm9 Am

mp f

SOFT AD LIB BEHIND COL' PIANO

(7)

(2)

(3)

OPT. UNIS

VOICES

STRAINS SO FULL AND CLEAR OF THAT E-E TER-NAL CHO-IR

YET LORD TO THY CLEAR WILL IF THOU A-TTUNE THE HEART WE IN THINE

DO DAT DOU = A BA DO DAT DOU A

Flöyte Guitar

Bass

Drums

Piano

COI SOP I

WALK

STICKS

Dm) — G) — Dm) — Gm) — Bm) — C) b9 C) — FA — F b9 — Gm9 — Gm b9

(8)

OPT. UNIS

VOICES

ANG-ELS MU-SIC STILL

DO-A-BA-DO — A MAY BEAR O-UR LO-WER PA-ART A LIT-TLE WHILE AND THEN SHALL COME THE GLO-RIOUS END

AND SONGS OF

Flöyte Guitar

Bass

Drums

Piano

mf

mf

mf

mf

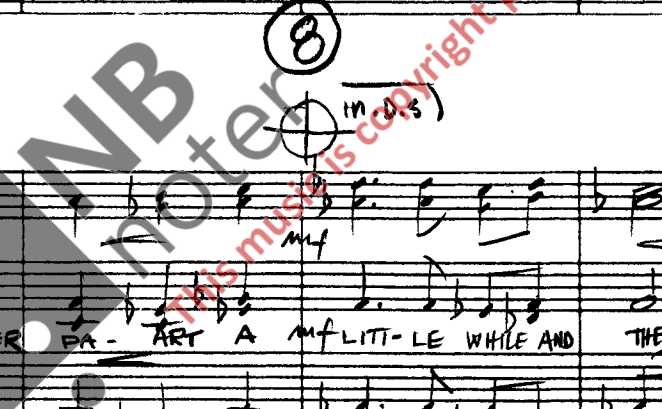
mf

C) b5 — G b A — F C m) F) b9 B m) — A b G A B m) — G A — E b m b9 — G b A G

BRUSH

mf

mf



VOICES

⑨

Rit... (A)PO

PER- FEKT PRAISE SHALL BLEND DO A OU A OUA OH - A

ANG - ELS AND OF MEN

Flöyte

Guitar

Bass

Drums

Piano

Rit... (A)PO

LEADIN SOLO PART

col piano

(sticks cym.)

mp (A)PO

Bm) - Gm) C) b5 - F - F GA - F Gm) C) b9 F Δ / F b9 / Gm9 - Gm b9 / C13 - C) b5 - G Δ / F Cm) F)

VOICES

⑩

mp A-

Flöyte

Guitar

Bass

Drums

Piano

Rit... (Solo) (T)S

Rit...

Rit...

Bm9 - Gb Δ - Em) Cm) b5 C) b9 F Gm) Eb13 A Δ / G) b5 Cm9 - Am) b5 Dm) - G) b5 Gm) b5 - C) b5

⑪

11

THINE EACH SOUL TO CALM EACH WAY-WARD THOUGHT RE-CLAIM AND MAKE OUR LIFE A DAI-LY PSALM OF GLORY TO THY NA-AME

VOICES

VOICES

Handwritten musical notation for the vocal parts in the first system, including treble and bass clefs, notes, and rests.

Flöte
Guitar

Flöte
Guitar

Handwritten musical notation for the Flöte and Guitar parts in the first system.

Bass

Bass

Handwritten musical notation for the Bass part in the first system.

Drums

Drums

Handwritten drum notation for the first system, including various rhythmic patterns.

Piano

Piano

Handwritten piano accompaniment for the first system, including chords and bass lines.

11

11

Handwritten musical notation for the second system, including dynamics like *mf* and *f*, and articulation like *sub p*.

VOICES

VOICES

LIT-LE WHILE AND THEN SHALL COME THE GLORIOUS END AND SONGS OF ANG-ELS AND OF MEN IN PER-FECT PRAISE SHALL BLEND A-

Handwritten musical notation for the vocal parts in the second system, including lyrics and musical notation.

Flöte
Guitar

Flöte
Guitar

Handwritten musical notation for the Flöte and Guitar parts in the second system.

Bass

Bass

Handwritten musical notation for the Bass part in the second system.

Drums

Drums

Handwritten drum notation for the second system.

Piano

Piano

Handwritten piano accompaniment for the second system, including chords and bass lines.

11

11

Handwritten musical notation for the end of the second system, including dynamics and articulation.

12

VOICES

Flöyte Guitar

Bass

Drums

Piano

MP

MP

PP

MEN - A - MEN - A - MEN - A - MEN EACH SOUL TO CLAIM EACH THOUGHT RE-CLAIM A DAI-LY PSALM TO THY NAME A -

ONLY D.S.

PP

mf

mf

mf

Bm7 - - - AΔ - - - GΔ - - Cm) F -

12

VOICES

Flöyte Guitar

Bass

Drums

Piano

FINE

II

ALLEGRO

♩ = 184 (192)

MEN A - MEN A - MEN A - MEN

RUBATO

Cym / H. BELLS

Bm7 - - - AΔ - - - Gm) - GΔ [I] F - F

VOICES

Flöyte
Guitar
Bass
Drums
Piano

Musical score for the first system. It includes staves for Flöyte, Guitar, Bass, Drums, and Piano. The Flöyte staff has notes with an 'As' marking. The Bass staff has notes with an 'OPT. BVA.' marking. The Drums staff shows a rhythmic pattern with 'x' marks. The Piano staff has a wavy line with 'COI TEN SAX' and 'COI BASS' written above it.

VOICES

Flöyte
Guitar
Bass
Drums
Piano

Musical score for the second system. It includes staves for Flöyte, Guitar, Bass, Drums, and Piano, plus a vocal line. The vocal line has lyrics: "DO BA DO BA DO-I A DO BA DO-I A I-O I A BAP DO BA DOBA DO-I A DO BA DO-L-I". Above the vocal line is a circled number 13 and the word "ATPO". Below the vocal line is "COI SOPR. 2" and "JAZZ LEGATO". The Flöyte staff has notes with an "OPT." marking. The Bass staff has notes with an "OPT." marking. The Drums staff shows a rhythmic pattern with "CYM RIDE" written above it. The Piano staff has notes with "COI SOPR. 2" and "Em 4009" written above it. A circled number 13 is also at the bottom of the page.

14

VOICES

Flöyte
Guitar

Bass

Drums

Piano

DA BA DO-A DA BA DO-A DO-L-I DA BA DO-I-A-O-A DO-L-I DO BA DA- mp DO BA DO BA DO-I-A

mp BA - O

mf DO BA DO BA DO-I-A

mp

COI SOPR. 2

Fill

Ami

COI BASS

14

VOICES

Flöyte
Guitar

Bass

Drums

Piano

A DA BADOA DO A BAP DO - A BADO A DA BA DO - A DA BA DO - A DO BA DO BA DO-I-A DO BA DO BA DO-I-A DA BA DO-A DABA DO A DO-L-I

DO BA DO-I A I-O I - A BAP DO BA DO BA DO-I-A DO BA DO BA DO-L-I DA BA DO-A DABA DO A DO-L-I

VOICES

decresc.

15

DO-A BA DO-A-A DO-L-I
 DA BA DO I A BA DO BA DA- DO-L-I DO BA DA
 DO BA DO A
 DA DO BA DO A
 DA DO BA DO BA
 (TACET 1, 2, TIME)

Flöyte
Guitar

Bass

Drums

Piano

PP

PP

PP

PP

Col Sopr. 1
 Col Bass

Gm - A^b - A^b - Am^b - D⁷ F Gm / E^b / Cm / D⁷ F Gm

PP 15

VOICES

poco a poco cresc.

DA BA DO A BA DO BA DO-A DA BAP DO-A DA BA DO DA-A DO BA DO-A DA BA DA DO BA DA-
 DO-A DA BA DO A BA DO BA DO-A DA BAP DO-A DA BA DO DA-A DO BA DO A DA BA DA- DA BA DA-

Flöyte
Guitar

Bass

Drums

Piano

poco a poco cresc.

Rit. 3x. 1. 2. 3.

Am^b - D⁷ - Gm - E^b - Am^b - D⁷ - Gm D⁷ Gm - E^b B^b - Gm Cm Gm Am^b Gm D⁷ - Gm

poco a poco cresc.

(Rit. 3x

(16) ATPO

VOICES

Flöyte
Guitar

Bass

Drums

Piano

Musical score for the first system, measures 1-8. The score includes staves for Voices, Flöyte/Guitar, Bass, Drums, and Piano. Handwritten annotations include "ONLY D.S.", "FINE", "Col PIANO", "ADD9", "JAZZ SOLO", and "GM". A circled measure number "16" is present at the start of the second measure.

VOICES

Flöyte
Guitar

Bass

Drums

Piano

Musical score for the second system, measures 9-16. The score includes staves for Voices, Flöyte/Guitar, Bass, Drums, and Piano. Handwritten annotations include "Bbms", "B ADD9", "E4", "Cm", and "A5". A large watermark "NB noter" and "This music is copyright protected" is overlaid on the score.

(17) SOFT BACKGROUND

VOICES

Flöyte Guitar

Bass

Drums

Piano

mp OH SING UN-TO THE LORD OH SING

POCO A POCO CREC.

Gm // // E Δ // // A Δ // // A Δ ^{b5} // // Am^{b7} // // (ADD D)

(17)

VOICES

Flöyte Guitar

Bass

Drums

Piano

AND PRAISE HIS NAME DO DA DOT DO DA DOT DO BA DO BA DO BA DO BA DO DA DOT

mf DO - A DOO DA DOT mf DO - A

f DO BA DO BA DO DA DO DA DOT DO BA DO BA DO DA

D) ^{b9} Am^{b7} // D) ^{b9} // Gm // // A Δ // // A Δ ^{b5} // // Am^{b7} // // D) - A7



(18)

VOICES

sub p

DA BA DO-A DOT P SI- ING UN - TO THE LORD A NEW SONG SING U- UN TO THE LORD ALL THE

Fløyte
Guitar

Bass

Drums

Piano

Col PIANO

OPT. TACET

SOFT SINGLE

Gm - - - (Gm - - D7) Gm - - - :. D7 - E^b - F7 - B^b - Gm - Cm) - B^b - Em)^{bf} -

(18)

VOICES

WORLD SING UN - TO THE LO-ORD AND PRAISE HIM BE- E TEL- LING OF HIS SAL-

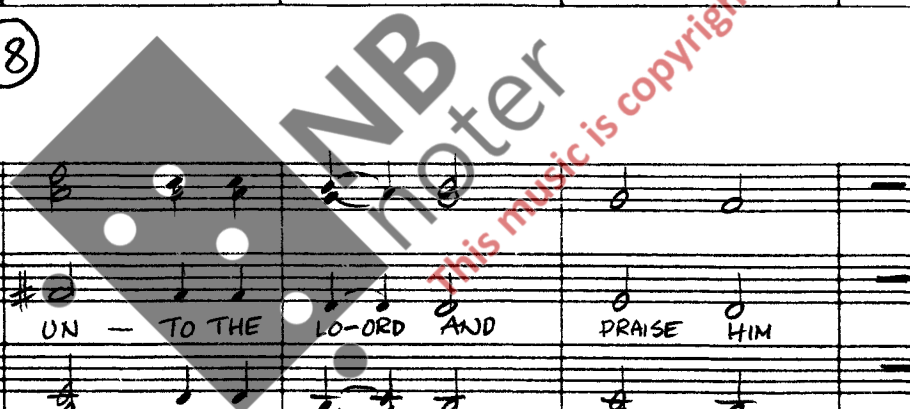
Fløyte
Guitar

Bass

Drums

Piano

F - - - F7 - - - D7 - - - Gm - - - Am)^{bf} - B^b - Cm) - - - Gm - Cm - Gm / D) -



VOICES

VA - TION

LET THE HEA - VENS RE - JOICE LET THE EARTH BE GLAD LET US SI - ING TO THE

Flöyte Guitar

Bass

Drums

Piano

COLT SAX

Col BASS

Chords: Gm, Gm, Am, D^{b9}, Gm, D⁷, E^b, Cm, B^b, Gm, Cm

mf

f

VOICES

LORD LET US SHOUT FOR JOY LET THE LO - ORDS NA - AME BE PRA - AISED FROM THE RIS - ING

Flöyte Guitar

Bass

Drums

Piano

COL PIANO

COL PIANO

Chords: B^b, Em⁷, F, F⁷, D⁷, Gm, Am⁷, B^b, Cm⁷, Gm, Cm

Watermark: This music is copyright protected

20

VOICES

OF THE SUN

SO DA DA DA DO -

Flöte
Guitar
Bass
Drums
Piano

Gm - D7 - Gm - - - Aδb5 - - - Am7b9 - - - D7b9 - - -

20

VOICES

Flöte
Guitar
Bass
Drums
Piano

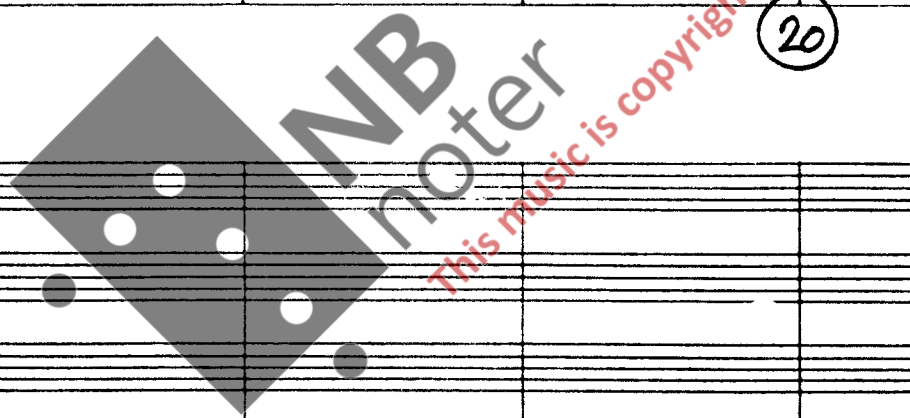
SOLO Flöte

dim....

Gm Aδb5

(D.S.)
al fine
con rep

(D.S.)



RUBATO / SLOW.

solo

PRaise THE

VOICES

Flöyte
Guitar

Bass

Drums

Piano

Solo ad lib.

molto rit..

dim....

21

VOICES

Flöyte
Guitar

Bass

Drums

Piano

LORD LORD OF HEAVEN PRAISE HIM ALL ALL YE ANGELS OF HIS PRAISE HIM SUN AND MOON PRAISE HIM ALL THE STARS AND LIGHT PRAISE THE LORD FOR THIS TIME TORTH AND EVER PRAISE THE

Chords: Cm - Ab - Ab5 - Am - Dsus - Dm - G - Cm9 - Cm - F13 - F - HA - Cm9 - F

21

24

VOICES

STA-ARS AND LIGHT M^f PR. THE LORD - PR. THE LORD LORD OF HEA- VEN PR. THE

BAP DO-DAT DO BI-O BAP

DA DO-BE DO CAP BA DO-A-BA DO BAP

Flöyte Guitar

Bass

Drums

Piano

M^f (OPT. 8/16) (OR AD LIB FILL)

Cel. Flöte Sax B^b B^b B^b(#9)

Cel. Bass BASS

M^f

26

24

VOICES

LORD IN THE HEIGHT DO-A-A PR. HIM All ALL THE ANGELS PR HIM SUN SUN AND MOON PR. THE LORD PR. HIM FOR THE TIME

Flöyte Guitar

Bass

Drums

Piano

T.S. Flöte Sax B^b(#9) B^b - H) (C) D) E) B^b(#9) B^b - B) D) E) - C9

BASS

25

On cue! REP. AD LIB.

VOICES

VOICES

FORTH EV-ER MORE

PRAISE M.F. PR. THE LORD OF HEA-VEN PR. (HIM) IN THE HEIGHT DO-I-A-BA PRAISE ALL THE

P/mf BOP BAP BA DO-A DO-A BOP BAP BA

Flöyte Guitar

SOLO BREAK

REP. AD. LIB.

COI PIANO (stillwater for soprano I)

Bass

COI PIANO

Drums

Drums notation

Piano

TENSAR

F) 2 2

BASS

B7 #9 // // // // E7 #9 //

25

OPEN REP.

LAST TIME.

VOICES

VOICES

ANG-ELS OF HIS PRAISE (HIM) ALL HIS HOST DO-I-A-BA

DO-A DO-A DOU DA-A DOU DA-A BOP DO DAT DA DO-A

LORD PR. HIM

LORD

Flöyte Guitar

Flöyte Guitar notation

Bass

Bass notation

Drums

Drums notation

Piano

Piano notation

B7 #9 // // F) // E7 // B7 #9 // // D7 // D7

29

poco a poco cresc...

VOICES

pp AH

pp AH

pp AH

(D.S)

Flöyte
Guitar

DEL 1 (2)

Bass

al f

Drums

ppp

Piano

B^b #a

ppp

Helge Furuta
26

29

ppp

VOICES

Flöyte
Guitar

Bass

Drums

Piano

