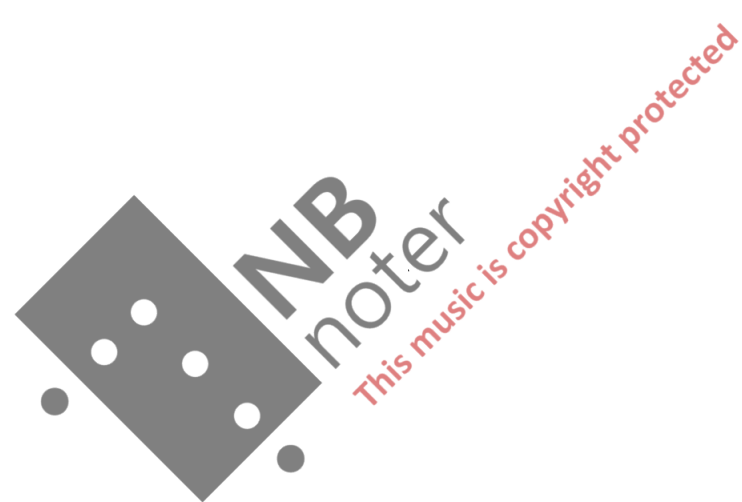


Trefoil Variations
Risto Holopainen 2009

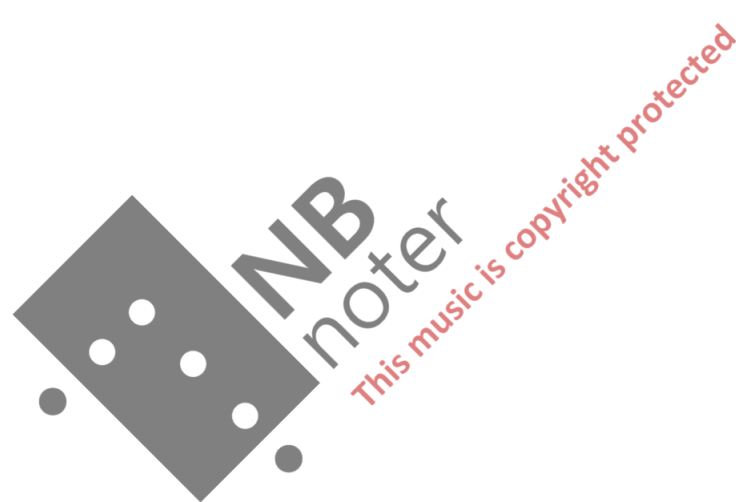
Dur. ca 7'



commissioned by ensemble Polygon

TREFOIL VARIATIONS

Flute
Clarinet in Bb
Violin
Viola
Cello
Piano



TREFOIL VARIATIONS

RISTO HOLOPAINEN 2009

$\text{♩} = 108-112$

flute *p* *sfz* *mf*

clarinet in Bb *mf*

violin

viola *mf*

viola-cello *mf* *pizz*

piano *legato* *mf* *pp*

fl

cl

vn

va *pizz*

vc

pno *legato* *p*

$\text{♩} = ca 120$
 ← $\text{♩} = \text{♩}$ → (un poco più mosso)

fl

cl

vn

va

vc

pno

28

f

6

sul pont.

gliss

p 5 5

arco

pp mp

arco sul pont.

fz

poco stringendo

f

ped

$\text{b}\flat$
 $\text{b}\flat$
 ym

fl

cl

vn

va

vc

pno

38

ritardando

$\text{b}\flat$ 5-5

sfz

6

$\text{b}\flat$ 6

sforz

f

6

pos. ond.

pp

3

mf

p

pp

3

mf

f

pp

3

mf

f

pp

legato

mp

UNA corda

ped



sempre rit.

(♩=84) ♩=112

fl

cl

vn

va

vc

pno

44

fl

cl

vn

va

vc

pno

57

3

tra corde

Handwritten musical score for measures 67-77. The score includes staves for Flute (fl), Clarinet (cl), Violin (vn), Viola (va), Violoncello (vc), and Piano (pno). The Flute part features a melodic line with various ornaments and dynamics. The Clarinet part is mostly silent. The Violin and Viola parts are also silent. The Violoncello part has a melodic line with triplets and slurs. The Piano part has a complex accompaniment with triplets and slurs. A large watermark 'NB Noter' is visible across the middle of the page.

Handwritten musical score for measures 78-87. The score includes staves for Flute (fl), Clarinet (cl), Violin (vn), Viola (va), Violoncello (vc), and Piano (pno). The Flute part has a melodic line with dynamics like *mf* and *p*. The Clarinet part has a melodic line with dynamics like *pp*, *f*, *p*, *ff*, and *mf*. The Violin and Viola parts have melodic lines with triplets and slurs. The Violoncello part has a melodic line with triplets and slurs. The Piano part has a complex accompaniment with triplets and slurs. A large watermark 'NB Noter' is visible across the middle of the page.

86

fl
cl
vn
va
vc
pno

93

fl
cl
vn
va
vc
pno

Handwritten musical score for measures 101-109. The score includes staves for Flute (fl), Clarinet (cl), Violin (vn), Viola (va), Violoncello (vc), and Piano (pno). The Flute part features melodic lines with dynamics *p* and *mf*. The Clarinet part has rests followed by melodic entries with dynamics *mf* and *p*. The Violin part includes *arco* and *pizz* markings. The Viola and Violoncello parts feature complex rhythmic patterns with triplets and sixteenth notes. The Piano part provides harmonic accompaniment with chords and bass lines.

Handwritten musical score for measures 110-118. The score includes staves for Flute (fl), Clarinet (cl), Violin (vn), Viola (va), Violoncello (vc), and Piano (pno). The Flute part begins with the tempo marking "meno mosso. J = ca 52" and features melodic lines with dynamics *mf*. The Clarinet part has melodic lines with dynamics *mf*. The Violin part includes *fizz* markings and complex rhythmic patterns. The Viola and Violoncello parts feature complex rhythmic patterns with triplets and sixteenth notes. The Piano part provides harmonic accompaniment with chords and bass lines.

Handwritten musical score for measures 115-119. The score includes staves for fl (flute), cl (clarinet), m (oboe), va (violin), vc (viola), and pno (piano). The music features complex rhythmic patterns with triplets and sixteenth notes. Dynamic markings include *pp*, *p*, and *mf*. The key signature has one sharp (F#) and the time signature is 3/8.

Handwritten musical score for measures 120-124. The score includes staves for fl (flute), cl (clarinet), m (oboe), va (violin), vc (viola), and pno (piano). The music features complex rhythmic patterns with triplets and sixteenth notes. Dynamic markings include *mf*, *p*, and *pp*. The key signature has one sharp (F#) and the time signature is 3/8. A tempo marking *poco rit* is present. A large watermark "NB noter" and "This music is copyright protected" is overlaid on the score. The page number "115" is visible at the bottom left of the first system.

← ♩ = ♩ = 69

Handwritten musical score for measures 129-137. The score includes staves for Flute (fl), Clarinet (cl), Violin (vn), Viola (va), Violoncello (vc), and Piano (pno). The music is in 3/8 time and features various dynamics such as *p*, *mf*, and *f*. Performance instructions include *arco* and *pizz*. The piano part includes a pedal marking *ped* and octaves marked *8va*. A large watermark "NB noter" is overlaid on the score.

poco rit. - - - ♩ = ♩ = 108

Handwritten musical score for measures 138-146. The score includes staves for Flute (fl), Clarinet (cl), Violin (vn), Viola (va), Violoncello (vc), and Piano (pno). The music is in 3/8 time and features dynamics such as *p*, *f*, *sfz*, and *mf*. Performance instructions include *non espressivo* and *pizz*. The piano part includes a *pizz* marking and a dynamic of *mf*. A large watermark "NB noter" is overlaid on the score.

Handwritten musical score for measures 145-155. The score includes staves for Flute (fl), Clarinet (cl), Violin (vn), Viola (va), Violoncello (vc), and Piano (pno). The music features complex rhythmic patterns and dynamic markings such as *p*, *mf*, and *ff*. A large watermark "NB noter" is visible across the score.

Handwritten musical score for measures 156-165. The score includes staves for Flute (fl), Clarinet (cl), Violin (vn), Viola (va), Violoncello (vc), and Piano (pno). The music features complex rhythmic patterns and dynamic markings such as *f*, *sfz*, and *p*. A large watermark "NB noter" is visible across the score.

♩ = 162

Handwritten musical score for measures 162-164. The score includes staves for Flute (fl), Clarinet (cl), Violin (vn), Viola (va), Violoncello (vc), and Piano (pno). The music is in 8/8 time and features complex rhythmic patterns with many slurs and accents. Dynamics include sfz, sfz, sfz, p, mf, f, and p. A 7:6 ratio is indicated in the vc staff. The piano part has a 7:6 ratio and a mf dynamic.

164

Handwritten musical score for measures 165-172. The score includes staves for Flute (fl), Clarinet (cl), Violin (vn), Viola (va), Violoncello (vc), and Piano (pno). The music continues with complex rhythmic patterns. Dynamics include f, p, pp, mf, f, and p. Performance instructions include 'ord.', 's.p.', 'legato', and 'sua'. A 7:6 ratio is indicated in the vc staff. The piano part has a 'legato sua' instruction and a p dynamic.

172

fl

cl

vn

va

vc

pno

181

pp 1-1-1 2-2-2 3-3-3

p cresc.

cresc.

8va - - -

fl

cl

vn

va

vc

pno

192

poco ritard.

ritenuto

pp

mf

sultasto

pp

sultasto

pp

arco sultasto

pp

f

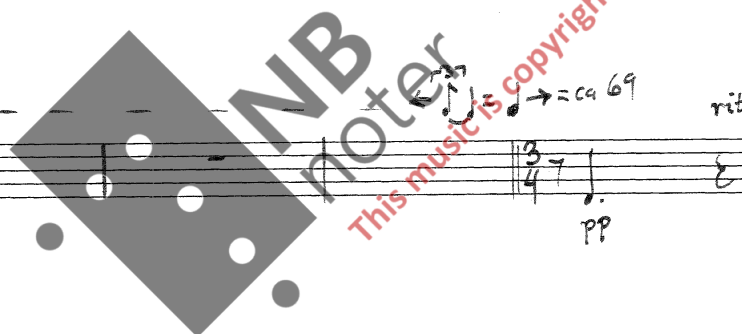
cresc.

f

sfz

p

3 3 3 3



à tempo (♩ = ca 69)

fl *mf*

cl *mf*

vn *ord.* *mf* *p*

va *ord.* *p*

vc *ord.* *p*

pno *f* *p* *pp* *una corda*

200 #

fl *sfz* *rit.*

cl *sfz*

vn *trb m* *mf* *sfz* *p*

va *mf* *sfz* *pizz.* *arco 6* *p*

vc *mf* *sfz*

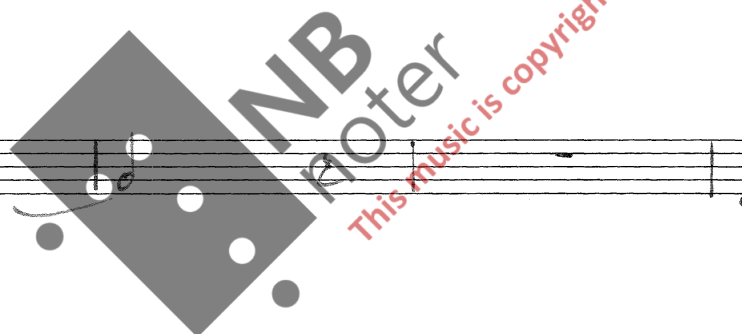
pno *mp* *7* *8va*

204 *tracorde*

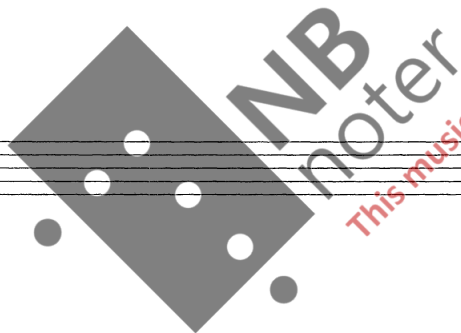
♩ = 54

Handwritten musical score for the first system, measures 208-213. The score includes staves for Flute (fl), Clarinet (cl), Violin (vn), Viola (va), Violoncello (vc), and Piano (pno). The key signature is one flat (B-flat major/D minor) and the time signature is 3/4. The music features dynamic markings such as *pp*, *cresc.*, and *mf*. The violin and viola parts have slurs and accents. The piano part includes triplets in the right hand.

Handwritten musical score for the second system, measures 214-219. The score includes staves for Flute (fl), Clarinet (cl), Violin (vn), Viola (va), Violoncello (vc), and Piano (pno). The key signature is one flat and the time signature is 3/4. The music features dynamic markings such as *pp*, *p*, *sfz*, *mp*, and *pp*. The violin and viola parts have slurs and accents. The piano part includes triplets in the right hand.



Blank musical staff paper with 18 horizontal staves.



This music is copyright protected