

$\text{♩} = 130$

Allegro - molto energico

Bs. Cl. TAPE

Handwritten musical score for the first system, featuring a Bass Clarinet (Bs. Cl.) and a Tape part. The system is in 4/4 time. The Bass Clarinet part includes fingering numbers (7, 6, 20, 5, 4, 17, 21) and dynamic markings (8v, f). The Tape part includes rhythmic notation with slash marks and dynamic markings (f).

Bs. Cl. TAPE

Handwritten musical score for the second system. It includes a note: "(obs! ujevnt beat)". The Bass Clarinet part features a section labeled "(Klavinet imitation)" with a forte (ff) dynamic. The Tape part includes dynamic markings (pp, mf, p, f) and a note "(Possible)".

Bs. Cl. TAPE

Handwritten musical score for the third system. The Bass Clarinet part includes dynamic markings (p, ff, mf, ff, p, pp, f, p, ff). The Tape part includes dynamic markings (p, ff, mf, ff, p, pp, f, p, ff).



TAPE

(Bjeller)

Klokke

Myk lyd

gliss

pp < p

This system contains five staves. The top staff has a series of rhythmic patterns marked with slashes. The second staff has a 3/4 time signature and a 4/4 time signature. The third staff has a 3/4 time signature. The fourth staff has a 3/4 time signature. The fifth staff has a 3/4 time signature. The system ends with a double bar line.

TAPE

myk metall.

myk metall

Hayre Bjelle

venstre Bjelle

(Perkusjon)

gliss

< mf > < mf > > PPP

This system contains five staves. The top staff has a series of rhythmic patterns marked with slashes. The second staff has a 4/4 time signature and a 2/4 time signature. The third staff has a 4/4 time signature. The fourth staff has a 4/4 time signature. The fifth staff has a 4/4 time signature. The system ends with a double bar line.

TAPE

68

3

4

This system contains five staves. The top staff has a series of rhythmic patterns marked with slashes. The second staff has a 4/4 time signature. The third staff has a 4/4 time signature. The fourth staff has a 4/4 time signature. The fifth staff has a 4/4 time signature. The system ends with a double bar line.

Myl. lyd.

Klar. Imitation

(non legato.)

P f > P P

$\text{♩} = 86$

Perly.

Myl. lyd.

f > p

3 4

a tempo (♩ = 150)

mf f > > > > >

4 4

~ 4 ~

Klokke
Hayve

$\text{♩} = 130$

♩ ♩ ♩ ♩

Klokke
Venstre

nylometall

non legato sempre.

p ————— *mf*

MB
noter
This music is copyright protected

p ————— *f* > *mf* . ————— *f* >

~ 5 ~

BCL. TAPE

Klokker: Høyre
Venstre

Myk metall

f p f p ff p f mf

BCL. TAPE

Myk lyd:

ft p f p f

BIG TUBE

Night metal

f p f p

BIG TUBE

Kidchen
HÖRER
Venstre
Myktmetall

ff p f mf

~ 7 ~

B.C.U. - TAPE

Handwritten musical score for the first system, consisting of five staves. The notation includes various rhythmic patterns, rests, and dynamic markings. The first staff has a treble clef and contains several measures of music. The second staff has a bass clef and contains rests and some notes. The third staff has a bass clef and contains notes and rests. The fourth staff has a bass clef and contains notes and rests. The fifth staff has a bass clef and contains notes and rests. Dynamic markings include *ff*, *p*, *ff*, *mf*, and *ff*. There are also some handwritten annotations like 'V' and 'N'.

B.C.U. - TAPE

Handwritten musical score for the second system, consisting of five staves. The notation includes notes, rests, and specific performance instructions. The first staff has a treble clef and contains notes and rests. The second staff has a bass clef and contains notes and rests. The third staff has a bass clef and contains notes and rests. The fourth staff has a bass clef and contains notes and rests. The fifth staff has a bass clef and contains notes and rests. Performance instructions include *senza misura.*, *ca 40 sec*, *ad lib.*, and *(flaute)*. There are also some handwritten annotations like 'ft' and 'su'.

$\text{♩} = 92$ B♭ Cl./Tape

Unison - en

B♭ Cl. - TAPE

B♭ Cl. - TAPE

Handwritten musical score for the first system. It consists of two staves. The top staff is a grand staff with a treble clef and a key signature of one flat (B♭). It contains notes for "Mykt metall" and "Klöße". The bottom staff is a grand staff with a bass clef and a key signature of one flat. It contains notes for "Fløyte". The score includes various time signatures: 4/4, 6/4, 5/4, 4/4, 3/4, and 4/4. There are also markings for "8va sempre" and "loco". Dynamics include pp , f , p , mf , and P . A large watermark "IMB noter" is visible over the score.

Handwritten musical score for the second system. It consists of two staves. The top staff is a grand staff with a treble clef and a key signature of one flat. It contains notes for "loco sempre". The bottom staff is a grand staff with a bass clef and a key signature of one flat. It contains notes for "loco sempre". The score includes various time signatures: 2/4, 6/4, 4/4, and 3/4. Dynamics include p , f , fp , sfz , and P . A large watermark "IMB noter" is visible over the score.

~ 2 ~

B♭ Cl. 1 - TAPE 1

Handwritten musical score for B♭ Clarinet 1, Tape 1. The score consists of two systems of staves. The first system includes a grand staff with treble and bass clefs, and a bass staff with a bass clef. The second system includes a grand staff with treble and bass clefs, and a bass staff with a bass clef. The music is written in a key signature of one flat (B♭) and features complex rhythmic patterns and dynamic markings.

Time signatures: 5/4, 4/4, 3/4, 4/4, 5/4.

Dynamic markings: P , f_{sub} , $P < f < f < <$, $< < >$, $P < ff$, P , ff .

Watermark: MB noter

B♭ Cl. 1 - TAPE 1

Handwritten musical score for B♭ Clarinet 1, Tape 1. The score consists of two systems of staves. The first system includes a grand staff with treble and bass clefs, and a bass staff with a bass clef. The second system includes a grand staff with treble and bass clefs, and a bass staff with a bass clef. The music is written in a key signature of one flat (B♭) and features complex rhythmic patterns and dynamic markings.

Time signatures: 6/4, 4/4, 6/4, 5/4, 4/4, 3/4.

Dynamic markings: sf , $P < f > P$, mf , $< < f >$, $P < f$, $P < f$, $P < f$, $P_{sub} < mf >$, $P < f$, $P_{sub} < f$.

Watermark: MB noter

~ 3 ~

B♭ Cl. + TAPE -

Handwritten musical score for the first system, featuring a B♭ Clarinet and Tape. The score is written on two staves (treble and bass clefs) and includes various musical notations such as notes, rests, and dynamic markings. The time signature changes from 3/4 to 4/4, then to 2/4, 6/4, and back to 4/4. Dynamic markings include *mf*, *ff*, *p*, and *mf*.

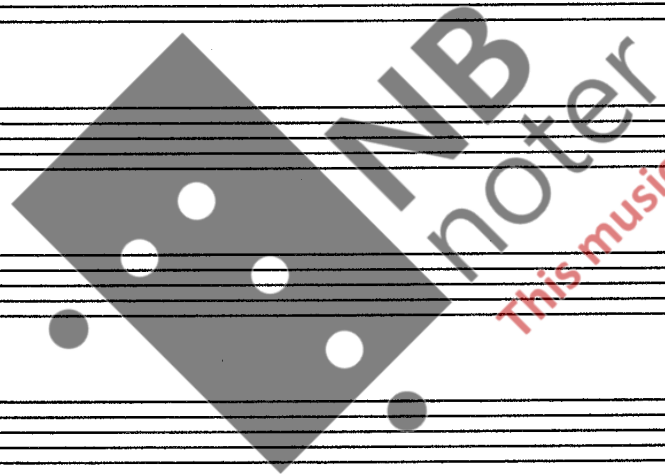
B♭ Cl. + TAPE -

Handwritten musical score for the second system, continuing the B♭ Clarinet and Tape part. The score is written on two staves (treble and bass clefs) and includes various musical notations such as notes, rests, and dynamic markings. The time signature changes from 5/4 to 4/4, then to 3/4, 4/4, and finally 5/4. Dynamic markings include *f*, *mf*, *f sub.*, *p*, *ff*, and *p*.

~ 4 ~

B.C.I. TAPÉ

Handwritten musical score for guitar on a four-staff system. The score is divided into two measures by a double bar line. The first measure is in 5/4 time, and the second is in 6/4 time. The notation includes various rhythmic values, accidentals, and dynamic markings such as *p*, *f*, and *>*. The guitar part is written in standard notation with a treble clef and a key signature of one sharp (F#).



This music is copyright protected

B♭ Cl. / Tape

Largo ~ calmo et sostenuto

Henrik Hellsternis 92

♩ = 52

Fløyte
myk lyd

pp p mf

Klokke

pp p mf

~ 3 ~

360. TAPES

mf p f > pp P

360. TAPES

mf pp



B♭ Cl. - Bass Cl. / Tape

♩ = 92

Andante - Largo ~ Moderato ~ Largo ~ Moderato
"Funk de Norvège"

Henrik Hellstems 92

B♭ Cl. | TAPÉ

Flayle

G.P.

P

B♭ Cl. | TAPÉ

bent down

fp <

P

sfp < f

19

B.C.L. TAPE

p

27

B.C.L. TAPE

sfz

G.P. + ny lyd

bent down

bent down

mp

~ 3 ~

36

Tape

B.C.I.

fp <

+ metall

fp <

sfz < f

pp

mp

43

Tape

B.C.I.

Flaute

non legato

f sempre

p

mp

p

~ 4 ~

48

TAPE
BCL

Handwritten musical score for measures 48-52. The system consists of two staves: a top staff in treble clef and a bottom staff in bass clef. The music features complex rhythmic patterns with many beamed notes and accents. There are markings for *Sim.* (Sordini) in both staves. At the end of the system, there are dynamic markings: *sf p < ff > f sempre*. Above the final measure, there are two groups of three notes each, each with a '3' above it, indicating triplets.

53

TAPE
BCL

Handwritten musical score for measures 53-58. The system consists of two staves: a top staff in treble clef and a bottom staff in bass clef. The music continues with complex rhythmic patterns. There are markings for *non legato* and *f sempre.* at the end of the system. Above the final measure, there are two groups of three notes each, each with a '3' above it, indicating triplets.

59

TAPE
BCL

Handwritten musical score for measures 59-64. The system consists of two staves: a top staff in treble clef and a bottom staff in bass clef. The music features complex rhythmic patterns. There are markings for *Senza misura* and *ca 25. sek.* above the system. The top staff has a wavy line with the text *Flyte by 2* written below it. The bottom staff has dynamic markings: *sf p < ff > pp pp < mp > pp < p > pp < mp > p*. Above the final measure, there are two groups of three notes each, each with a '3' above it, indicating triplets.

~ 5 ~

63 $\text{♩} = 117/119$

Handwritten musical score for measures 63-70. The score is written on five staves. The first two staves are labeled "TAPE" on the left. The third staff is labeled "Fløyte:" and contains parts for "Høyre" and "Venstre". The fourth staff is labeled "Bocl." and contains a percussion part. The fifth staff contains dynamics and performance markings. The score includes notes, rests, and various performance instructions such as "ad lib.", "sim ad lib.", "f", "pp", and "(Double tongue)".

Handwritten musical score for measures 70-77. The score is written on five staves. The first two staves are labeled "TAPE" on the left. The third staff is labeled "Fløyte:" and contains parts for "Høyre" and "Venstre". The fourth staff is labeled "Bocl." and contains a percussion part. The fifth staff contains dynamics and performance markings. The score includes notes, rests, and various performance instructions such as "ad lib.", "sim ad lib.", "p", "mf", and "f".



~ 6 ~

71

BCL. + TAPE

at lib

at lib

at lib

p ————— f p ————— f

88

TAPE

BCL.

senza misura ca 20 sch.

Hayre

venstre

H. Flöte

V. Klarinetten imitieren

Perkussion

Change to Bass Cl.

ff

ca 8 sch.

~ 7 ~

96

Hoyre

Vanstre

TAPE

Klar. imitasjon

Bas. Cl.

sim ad lib

f

108

TAPE

Bas. Cl.

Klokker

sim ad lib

crescendo

mf

p

crescendo

~ 82

117

TAPE

B.S.C.

120

mf mf crescendo... f

126

TAPE

B.S.C.

130

135

crescendo... ff fff

♩ = 92

Unison ~ to

Henrik Hellstenius 92

Høyt metall

BCL + TAPE

Handwritten musical score for the first system. It consists of three staves. The top staff has a treble clef and a 4/4 time signature. The middle staff has a treble clef and a 4/4 time signature. The bottom staff has a bass clef and a 4/4 time signature. The music includes notes, rests, and dynamic markings such as *ppp*, *mp*, *pp*, *p*, *ppsub*, *fp*, and *mf*. There are also some handwritten annotations like "Fløyte." and "P sub".

BCL + TAPE

Handwritten musical score for the second system. It consists of three staves. The top staff has a treble clef and a 4/4 time signature. The middle staff has a treble clef and a 4/4 time signature. The bottom staff has a bass clef and a 4/4 time signature. The music includes notes, rests, and dynamic markings such as *p*, *pp*, *mp*, *pp*, *ppsub*, *mf*, and *pp*. There are also some handwritten annotations like "P" and "P sub".



BCL. + TAPE

Klokken: H

Hayre

Venstre

p < > pp P sf P mf mp

BCL. + TAPE

mf f P mf PP mp PP mp P mf

Bcl. TAPÉ

metall

+ flayle

Bcl. TAPÉ

(Kobha)

Moh

Flayle

Dolce

no crescendo!

mf

2x

P

~ 4 ~

B♭CL TAPPE

This system contains three staves of handwritten musical notation. The top staff is in treble clef and contains several measures with rests and some notes. The middle and bottom staves are in bass clef and feature dense, rhythmic patterns with many beamed notes. There are several slurs and accents throughout. Dynamic markings 'p' are present under the bottom staff in the second and fourth measures. The system concludes with a double bar line.

B♭CL TAPPE

This system contains three staves of handwritten musical notation. The top staff is in treble clef and includes a first ending bracket labeled '1.' that spans several measures. The middle and bottom staves are in bass clef and continue the rhythmic patterns from the first system. Dynamic markings include 'p' at the beginning, 'pp' in the middle, and a sequence of 'pp', 'mf', 'pp_sdb', 'pp', and 'pp' at the end. The system concludes with a double bar line.

~ 5 ~

Handwritten musical score for the first system, featuring three staves. The top staff is labeled "Klavier" and includes the instruction "2. Hayne" and "Vbruste." The middle staff is labeled "Tape" and includes the instruction "Nchall". The bottom staff is labeled "Bocli" and includes the instruction "Psub." and "oll". The score contains various musical notations, including notes, rests, and dynamic markings such as "ppp", "mf", and "p".

Handwritten musical score for the second system, featuring three staves. The top staff is labeled "Tape" and includes the instruction "5". The middle staff is labeled "Bocli" and includes the instruction "4". The score contains various musical notations, including notes, rests, and dynamic markings such as "f", "p", "ff", and "fp".



~ 6 ~

BCL. TAPE

Handwritten musical score for the first system, featuring three staves. The top staff contains a series of rests with a 'V.' marking above the first few. The middle staff has notes with a 'Psub' marking. The bottom staff has notes with a 'P sempre' marking. A '+Metall' marking is present above the second staff. The system concludes with a double bar line.

BCL. TAPE

Handwritten musical score for the second system, featuring three staves. The notation is more complex, including many notes with stems and beams. Dynamic markings include 'pp' at the beginning and 'p' throughout. The system concludes with a double bar line.

Grave ~ con molto silenzio

Henrik Hellstenius 92

senza misura

B.C.U. F-TAPE 1

PPP ∇ P ∇ PP

P

V

B.C.U. TAPE

PP ∇ P

PP ∇ P

B.C.U. TAPE 1

pp ∇ mf ∇ pp ∇ mf ∇ pp ∇ mf ∇ pp ∇ mf ∇

vib.

pp ∇ P

V

Mylat metall

P ∇ mf ∇

~ 2 ~

Br. Cl. TAPZ

Br. Cl. TAPZ

p mf mp

end. vib.

Br. Cl. TAPZ

Br. Cl. TAPZ

mp

NB noter

This music is copyright protected

~ 3 ~

Bs.Cl. + TAPE

tr.
#0(e)
pp < f > pp < f > pp < f > pp < f > pp

Bs.Cl. + TAPE

pp < p < f > p pp < p < f > pp < f > p < f > p

mykt in ball.

tr.
#0(e)
P < f > PP

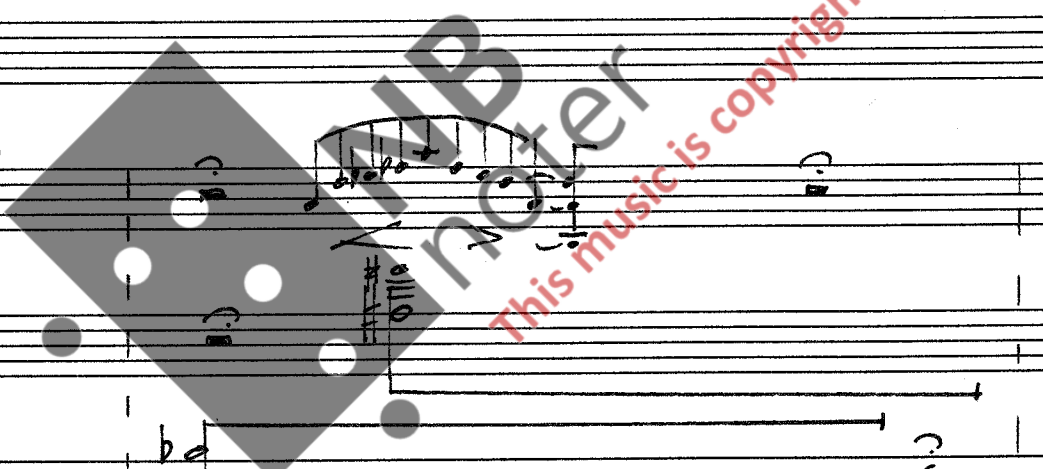
~ 4 ~

B.C.I. TAPE 1

Handwritten musical score for the first system, featuring three staves. The top staff contains notes with dynamic markings pp , p , mf , and pp . The middle staff contains notes with dynamic markings pp , p , mf , and pp . The bottom staff contains notes with dynamic markings p , f , sf , f , and p . A section of the bottom staff is marked "tr. un. tan tr. un. tan tr. un. tan tr. un. tan". A handwritten note "Night metall + flayle." is written above the top staff. The system concludes with a double bar line and a fermata.

B.C.I. TAPE 1

Handwritten musical score for the second system, featuring three staves. The top staff contains notes with dynamic markings pp and mf . The middle staff contains notes with dynamic markings pp and mf . The bottom staff contains notes with dynamic markings pp and mf . A handwritten note "Night med." is written above the top staff. The system concludes with a double bar line and a fermata.



~ 5 ~

Handwritten musical score for the first system, labeled "B.C.U. + TAPE" on the left. It consists of four staves. The top staff contains a melodic line with a slur and a crescendo hairpin. The second staff contains a bass line with notes and rests. The third and fourth staves contain a piano accompaniment with chords and notes. Dynamics include *pp* and *mp*. There are also some handwritten markings like "V" and "p".

Handwritten musical score for the second system, also labeled "B.C.U. + TAPE" on the left. It consists of four staves. The top staff has a melodic line with a slur. The second staff has a bass line. The third and fourth staves have piano accompaniment. Dynamics include *pp*, *mf*, and *pp*. Performance instructions include "Small Vib.", "Large Vib.", and "Non. vib.". The system ends with a double bar line.

