

Trond Erikson

Night Music in Six Stages

for solo piano





Trond Erikson

Night Music in Six Stages

for solo piano

I: In-Sleep

II: The Sweet Dream

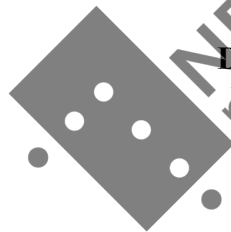
III: The Nightmare

IV: Sleep-Less

V: The Awakening

VI: Spilt Coffee in the Morning Mist

Durata
18:45



NB
number

This music is copyright protected



Pno.

17

p

Pno.

24

pp cresc. mf

Pno.

31

molto rit. ♩=88

Pno.

36

rit. ♩=120

Pno.

39

p

Night music in six stages

Durata 3:45

II - The Sweet Dream

Trond Erikson

op.54

$\text{♩} = 40$

Piano

pp

Pno.

Pno.

Pno.

Pno.

$\text{♩} = 80$

cresc.

f

©2022

Night music in six stages

Pno.

8

p *cresc.* *f*

5

Detailed description: This system contains measures 8 and 9. The music is written for piano in a grand staff. Measure 8 starts with a piano (*p*) dynamic and features a five-fingered (*5*) ascending scale in the right hand. A crescendo (*cresc.*) leads to a fortissimo (*f*) dynamic in measure 9, which concludes with a five-fingered (*5*) descending scale. The bass line is mostly silent.

Pno.

10

mp *cresc.* *f*

$\text{♩} = 96$

5

Detailed description: This system contains measures 10 and 11. The tempo is marked as quarter note = 96. Measure 10 begins with a mezzo-piano (*mp*) dynamic and a five-fingered (*5*) ascending scale. A crescendo (*cresc.*) leads to a fortissimo (*f*) dynamic in measure 11, which features a five-fingered (*5*) descending scale. The bass line has some activity in measure 11.

Pno.

12

p *cresc.* *mp*

$\text{♩} = 40$

5

Detailed description: This system contains measures 12 and 13. The tempo is marked as quarter note = 40. Measure 12 starts with a piano (*p*) dynamic and a five-fingered (*5*) ascending scale. A crescendo (*cresc.*) leads to a mezzo-piano (*mp*) dynamic in measure 13, which features a five-fingered (*5*) descending scale. The bass line is mostly silent.

Pno.

14

p *mf* *mp*

$\text{♩} = 140$

5

Red.

Detailed description: This system contains measures 14 and 15. The tempo is marked as quarter note = 140. Measure 14 starts with a piano (*p*) dynamic and a five-fingered (*5*) ascending scale. The dynamic changes to mezzo-forte (*mf*) in measure 15, which features a five-fingered (*5*) descending scale. The bass line has some activity in measure 15. A watermark 'NB noter' and 'This music is copyright protected' is visible over the system.

Pno.

17

p *pp* *mp*

$\text{♩} = 40$

5

Detailed description: This system contains measures 17 and 18. The tempo is marked as quarter note = 40. Measure 17 starts with a piano (*p*) dynamic and a five-fingered (*5*) ascending scale. The dynamic changes to pianissimo (*pp*) in measure 18, which features a five-fingered (*5*) descending scale. The bass line has some activity in measure 18.

Night music in six stages

Piano score for measures 20-23. The piece is in 4/4 time with a tempo of 88. Measure 20 features a treble clef with a half note chord and a bass clef with a half note chord, both marked with a fermata and a circled 'V'. Measure 21 has a treble clef with a half note chord and a bass clef with a half note chord, both marked with a fermata and a circled 'V'. Measure 22 has a treble clef with a half note chord and a bass clef with a half note chord, both marked with a fermata and a circled 'V'. Measure 23 has a treble clef with a half note chord and a bass clef with a half note chord, both marked with a fermata and a circled 'V'. A watermark 'NB Noter' is visible over the score.

Piano score for measures 24-27. Measure 24 has a treble clef with a half note chord and a bass clef with a half note chord, both marked with a fermata and a circled 'V'. Measure 25 has a treble clef with a half note chord and a bass clef with a half note chord, both marked with a fermata and a circled 'V'. Measure 26 has a treble clef with a half note chord and a bass clef with a half note chord, both marked with a fermata and a circled 'V'. Measure 27 has a treble clef with a half note chord and a bass clef with a half note chord, both marked with a fermata and a circled 'V'. A watermark 'NB Noter' is visible over the score.

Piano score for measures 28-31. Measure 28 has a treble clef with a half note chord and a bass clef with a half note chord, both marked with a fermata and a circled 'V'. Measure 29 has a treble clef with a half note chord and a bass clef with a half note chord, both marked with a fermata and a circled 'V'. Measure 30 has a treble clef with a half note chord and a bass clef with a half note chord, both marked with a fermata and a circled 'V'. Measure 31 has a treble clef with a half note chord and a bass clef with a half note chord, both marked with a fermata and a circled 'V'. A watermark 'NB Noter' is visible over the score.

Piano score for measures 32-35. Measure 32 has a treble clef with a half note chord and a bass clef with a half note chord, both marked with a fermata and a circled 'V'. Measure 33 has a treble clef with a half note chord and a bass clef with a half note chord, both marked with a fermata and a circled 'V'. Measure 34 has a treble clef with a half note chord and a bass clef with a half note chord, both marked with a fermata and a circled 'V'. Measure 35 has a treble clef with a half note chord and a bass clef with a half note chord, both marked with a fermata and a circled 'V'. A watermark 'NB Noter' is visible over the score.

Piano score for measures 36-39. Measure 36 has a treble clef with a half note chord and a bass clef with a half note chord, both marked with a fermata and a circled 'V'. Measure 37 has a treble clef with a half note chord and a bass clef with a half note chord, both marked with a fermata and a circled 'V'. Measure 38 has a treble clef with a half note chord and a bass clef with a half note chord, both marked with a fermata and a circled 'V'. Measure 39 has a treble clef with a half note chord and a bass clef with a half note chord, both marked with a fermata and a circled 'V'. A watermark 'NB Noter' is visible over the score.

Night music in six stages

Pno.

35

cresc.

Pno.

37

rit.

6

f

Ped.

Pno.

39

p

=104

pp

Ped.

Pno.

43

Pno.

45

Pno.

Pno.

Pno.

Pno.

Pno.

Night Music in six stages

III - The Nightmare

Trond Erikson

op.54

Durata 2:00

♩=48

Piano

fff LH

Lead.

♩=40

Pno.

ff

3 3

Pno.

fff

ff

Pno.

p

8

♩=80

♩=40

Pno.

fff

Pno.

18

8va

Pno.

21

f

Pno.

23

fff



Night music in six stages

Durata 5:30

IV - Sleep-Less

Trond Erikson

op.54

$\text{♩} = 52$

Piano

Pno.

Pno.

Pno.

Pno.

17

Pno.

21

Pno.

mf

25

Pno.

p *pp* *mp*

29

Pno.

33

Pno.

Pno.

37

mp p pp mf

Pno.

42

mp pp

Pno.

46

mp

Pno.

49

f

3

Pno.

52

8

Pno.

54

55

f

Pno.

56

57

58

59

60

mp

p

Pno.

61

62

63

64

p

Pno.

65

66

67

68

p

Pno.

69

70

71

72

71

Pno.

mf

75

Pno.

mp

p

pp

Ped. *



Night music in six stages

V - The Awakening

Trond Erikson

op.54

Durata 2:00

$\text{♩} = 76$

Piano

p *pp*

Pno.

p *mf*

Pno.

f *ff* *p* *pp*

$\text{♩} = 76$

Pno.

p *f*

$\text{♩} = 60$

5va

Pno.

mp *mf*

Night music in six stages

Piano score for measures 12-13. The music is in 3/4 time. Measure 12 starts with a treble clef and a piano (*p*) dynamic. The melody features a series of eighth notes with a sharp sign, followed by a triplet of eighth notes. Measure 13 continues with a triplet of eighth notes and another triplet of eighth notes. The tempo marking *accel.* is placed above the first measure.

Piano score for measures 14-15. The music is in 2/4 time. Measure 14 starts with a treble clef and a forte (*f*) dynamic. The melody features a series of eighth notes with a sharp sign, followed by a triplet of eighth notes. Measure 15 continues with a triplet of eighth notes and another triplet of eighth notes. The tempo marking $\text{♩} = 86$ is placed above the first measure.

Piano score for measures 16-17. The music is in 2/4 time. Measure 16 starts with a treble clef and a fortissimo (*fff*) dynamic. The melody features a series of eighth notes with a sharp sign, followed by a triplet of eighth notes. Measure 17 continues with a triplet of eighth notes and another triplet of eighth notes.

Piano score for measures 18-19. The music is in 4/4 time. Measure 18 starts with a treble clef and a forte (*f*) dynamic. The melody features a series of eighth notes with a sharp sign, followed by a triplet of eighth notes. Measure 19 continues with a triplet of eighth notes and another triplet of eighth notes. The tempo marking $\text{♩} = 60$ is placed above the first measure. The dynamic marking *cresc.* is placed below the first measure.

Piano score for measures 19-20. The music is in 3/4 time. Measure 19 starts with a treble clef and a fortissimo (*fff*) dynamic. The melody features a series of eighth notes with a sharp sign, followed by a triplet of eighth notes. Measure 20 continues with a triplet of eighth notes and another triplet of eighth notes. The tempo marking $\text{♩} = 76$ is placed above the first measure. The dynamic marking *mp* is placed below the first measure. The word *Red.* is placed below the first measure.

Pno.

21

pp

p

And.

♩ = 76

3

Detailed description: This system contains measures 21, 22, and 23. Measure 21 is in 7/4 time, measure 22 in 6/4, and measure 23 in 3/4. The music features complex chordal textures in the right hand and rhythmic patterns in the left hand. Dynamics range from *pp* to *p*. A tempo marking of *And.* and a metronome marking of *♩ = 76* are present. A triplet of eighth notes is marked with a '3' and an accent (>) in measure 23. A fermata is placed over the final note of measure 23.

Pno.

24

f

mp

p

And.

Detailed description: This system contains measures 24, 25, and 26. Measure 24 is in 12/8 time, measure 25 in 12/8, and measure 26 in 3/4. The music features a strong bass line in the left hand and melodic lines in the right hand. Dynamics range from *f* to *p*. A tempo marking of *And.* is present. A fermata is placed over the final note of measure 26.

Pno.

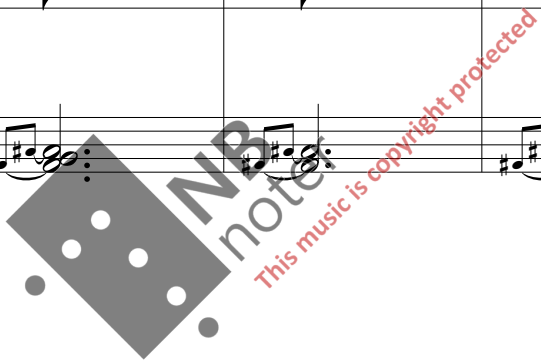
27

pp

♩ = 50

Detailed description: This system contains measures 27, 28, 29, 30, and 31. Measure 27 is in 3/4 time, and measures 28-31 are in 3/4. The music features a sparse texture with sustained chords in the right hand and rhythmic patterns in the left hand. Dynamics range from *pp*. A tempo marking of *♩ = 50* is present. A fermata is placed over the final note of measure 31.

attacca



Night music in six stages

Durata 3:20

VI - Spilt coffee in the morning mist

Trond Erikson

op.54

Piano

$\text{♩} = 60$

pp

Pno.

p *mp* *p*

Pno.

pp

Pno.

f

Pno.

cresc. *f*

Night music in six stages

Pno.

15

mf

3

3

3

3

3

3

Pno.

17

ff

mf

pp

3

3

3

3

Pno.

21

p

5

Pno.

26

rit.

mp

Pno.

30

3

Pno.

32

mp

3

Pno.

34

mp

3

Pno.

36

mf

3

Pno.

37

mp

mf

3

Pno.

39

f

3

Pno.

42

mf

ff

rit.

3 3 3

This system contains measures 42 and 43. It features a treble and bass clef with a 3/4 time signature. The first part of measure 42 is marked *mf* and contains three triplet eighth notes in both hands. The second part of measure 42 and the entire measure 43 are marked *ff* and include a *rit.* (ritardando) instruction. Measure 43 features complex chords and sixteenth-note patterns in both hands.

Pno.

44

mf

♩ = 60

3 3 3

3 3

3 3

3 3

This system contains measures 44 and 45. It features a treble and bass clef with a 3/4 time signature. Measure 44 is marked *mf* and includes a tempo marking of ♩ = 60. It contains several triplet eighth notes in the treble clef. Measure 45 continues with triplet eighth notes and includes a 2/4 time signature change at the end.

Pno.

46

3 3 3 3

6 3

7

This system contains measures 46 and 47. It features a treble and bass clef with a 2/4 time signature. Measure 46 contains four triplet eighth notes in the treble clef. Measure 47 continues with triplet eighth notes and includes a 3/4 time signature change at the end. A large watermark is present over this system.

Pno.

47

p

3 3

3 5

6 3

7

This system contains measures 47 and 48. It features a treble and bass clef with a 3/4 time signature. Measure 47 is marked *p* (piano) and contains triplet eighth notes in the treble clef. Measure 48 continues with triplet eighth notes and includes a 3/4 time signature change at the end.

Pno.

48

5 6 6 6 5 6

This system contains measures 48 and 49. It features a treble and bass clef with a 3/4 time signature. Measure 48 contains a triplet eighth note in the treble clef. Measure 49 contains a complex bass line with a 5/6/6/6/5/6 pattern and a 3/4 time signature change at the end.

Pno.

49

mp *cresc.*

3 3

5 3 3

6 6

Detailed description: This system covers measures 49 and 50. Measure 49 is in 3/8 time and features a treble clef with a triplet of eighth notes and a bass clef with a triplet of eighth notes. Measure 50 is in 3/4 time and features a treble clef with a half note and a bass clef with a half note. The dynamic is *mp* with a *cresc.* marking. There are various fingerings and slurs indicated.

Pno.

51

3 3 3

3 3

7

Detailed description: This system covers measures 51 and 52. Measure 51 is in 3/8 time and features a treble clef with a triplet of eighth notes and a bass clef with a triplet of eighth notes. Measure 52 is in 3/4 time and features a treble clef with a half note and a bass clef with a half note. There are various fingerings and slurs indicated.

Pno.

53

ff *mf*

3 3 3

3 3 3

3 3 3

Detailed description: This system covers measures 53 and 54. Measure 53 is in 6/8 time and features a treble clef with a triplet of eighth notes and a bass clef with a triplet of eighth notes. Measure 54 is in 3/4 time and features a treble clef with a half note and a bass clef with a half note. The dynamic is *ff* in measure 53 and *mf* in measure 54. There are various fingerings and slurs indicated.

Pno.

55

p

3 3 3 3

Detailed description: This system covers measures 55 and 56. Measure 55 is in 3/4 time and features a treble clef with a half note and a bass clef with a half note. Measure 56 is in 3/4 time and features a treble clef with a half note and a bass clef with a half note. The dynamic is *p*. There are various fingerings and slurs indicated.

Pno.

57

mp

3 3

Detailed description: This system covers measures 57 and 58. Measure 57 is in 3/4 time and features a treble clef with a half note and a bass clef with a half note. Measure 58 is in 3/4 time and features a treble clef with a half note and a bass clef with a half note. The dynamic is *mp*. There are various fingerings and slurs indicated.

Pno.

60

f

3 3 3 3 3 3

Pno.

62

rit.

dim.

p

♩=96

3 3 3 3 3

Pno.

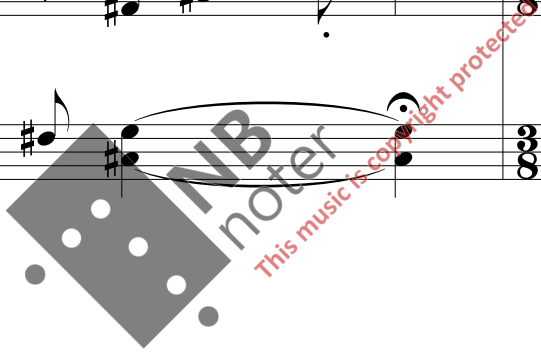
65

rit.

ff

♩=124

5 3 3



Verkliste - List of works

•Solo:

- «Silence pour orgue» op.1 (1993) - Innspilt på cd av Valeri Rubacha. Durata: 4.00
«Undring og barnlig lek» for fløyte solo op.2 (1994). Durata: 6.00
«Istapp-postludiet» op.10 (1997/2016). Durata: 9.00
«Vind-lokk» for fløyte solo op.15 (2008). Durata: 3.00
«...and the landscape is ticking away» for marimba solo op.24 (2016). Durata: 9.40
«Fantasia Drammatico» for organ op.25 (2016). Durata: 8.00
«Defragmentering av en folketone» op.27 (2016) for klaver - Durata: 9.15
«Interrupted Gloom» op.29 (2016) for klaver – Durata: 19.00
«Suite for klaver» op.30 (2016) 5 satser. Durata:14.35
«Prelude for organ» op.32 (2017/18). Durata: 8.15
«4 pieces for violin solo» op.45 (2020). Durata: 8.40
«Challenge inside the corona-wave 1-3» op.48 (2020-2021). Durata: 7.30
«6 Monologer Bb klarinett, cello, trompet, bratsj, obo og trombone» op.50 (2022)
«25. juni 2022 kl.0115» for solo klaver. Durata 5:00
«Night music in six stages» for piano solo op.54 (2022) Durata: 18:45

•Kammermusikk:

- «5 miniatyrer for blåsekvintett» op.6 (1994). Durata: 6.00
«Helferd - en reise i fire etapper for kammerensemble» op.7 (1994). Durata: 9.30
«D.S. - Strykekvartett nr.1» op.8 (1995). Durata: 12:30
«La Fileuse» for fløytesekstett op.9 (1996) Durata: 12.20
«Fuki No Kyoku» op.11 (1998) for trompet og melodisk slagverk. Durata: 4.10
«5 Short Stories» for clarinet in Bb with piano op.12 (2008-2020). Durata: 11'
«Waves» op.16 (2015) for 2 fløyter Durata: 6.30
«3 miniatyrer for klarinett og klaver» op.17 (2015). Durata: 2.00
«5 for 3» op.18 (2016) (Fløyte, Bb klarinett, Fagott). Durata: 7.40
«Små karakterstykker for fløyte, obo og Bb-klarinett» op.19 (2004/2020). Durata: 7.15
«Den mekaniske dukken» (2016) for fløyte og klarinett i Bb op.20. Durata: 3.15
«Meditasjon» op.22b (2016) for chamber ensemble. Durata: 9.00
«Music for 8 sorrowfull string instruments» op.23 (2016). Durata: 18.00
«Liten suite for strykere» op.33b (2017-2018/2022). Durata: 10.45
«A Midlife Intermezzo» for viola and piano op.36 (2017). Durata: 10.00
«Strykekvartett nr.2» op.38 (2014-2017). Durata: 14.15
«The Spider and the Fly» for Bb Clarinet and Bass-clarinet op.40 (2017). Durata: 7.00
«4 pieces for solitary instruments to (per)form as a group op.42» for fløyte, klaver og fiolin op.42 (2019-2020). Durata: 29.00

«Elegiac theme with small variations op.44» for fiolin, cello og piano (2020). Durata: 9.15
«Impressions for euphonium, piano and percussion op.47» (2020). Durata: 11.30
«Mind Drifting in Simplicity» op.49 for voice, piano, glockenspiel and String Quartet (2021-2022)
Durata 28:00
«Contrasts» for string quartet op.52/1 (2022) Durata 6:00
«Transition» for string quartet op.52/2 (2022) Durata 14:00
«3 miniatyrer i KammerKlang» op.52 (2022) Durata 6:00

.Orkester:

«Meditasjon» op.22 (2016) for woodwinds and string orchestra. Durata: 9.00
«Days of Sorrow and Sadness» op.35 (2017). Durata: 12.30

•Blåseorkester:

«Fantasi over Ein' Feste Burg» (1994) for blåseorkester – Durata: 4.20
«Fantasi over en norsk folketone» for lite blåseorkester op.5 (1994) – Durata: 3.30
«Musikk for blåsere og slagverk» op.14 (1999) - tre satser for blåseorkester – Durata: 18.00
«Umoristico Marcia Infame» Concert march for wind band op.21 (2016). Durata: 2.40
«beiii-h» op.26 (2016) for altsaxofon og brassensemble. Durata: 3.10
«Fanfare 2016» for brassensemble and percussion Durata: 1.00 (4 trp-2trb-eup-tub-3 perc)
«Poeme Impetuoso» op.31 for symfonisk janitsjarorkester (2017). Durata: 8.00
«Old Style – New Wrapping» op.34 – Brass-suite nr.1 (2017-2020): Durata: 9.40
«Eigersund» op.43 - Brass-suite nr.2 (2020). Durata: 8.00
«A Mad Man's Laugh» for concert band op.46 (2019-2020) Durata: 10'

•Vokal:

«3 Kongekvad» for sopran og klaver op.3 (1994/2022). Durata: 3.15
«Haiku» op.4 (1994) Tekst: Haiku/Paul-Helge Haugen. Durata: 2.00
«Mururoa» 5 satser for kor a capella op.13 (1998). Durata: 8.15
«Ne pas oublier» for 8 stemmer a capella op.37 (2017). Durata: 8.00
«I Syng of a Maiden» op.41 for damekor (SSAA), treblåsere, horn i F, klaver og stemt slagverk (2018) Durata: 6:30

NB Noter

*Henrik Ibsensgt. 110
N-0255 Oslo*

<https://www.nb.no/noter/>
<http://troeri.wixsite.com/trond-erikson/>