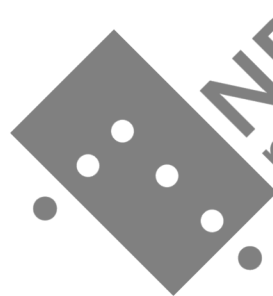


Sverre Eftestøl

Halling

for
4-handed organ



This music is copyright protected

1996/2019

Halling

Halling is a part of a suite for fourhanded piano, composed in 1996

Allegretto ♩ = 85

Sverre Eftestøl, 1996/2019

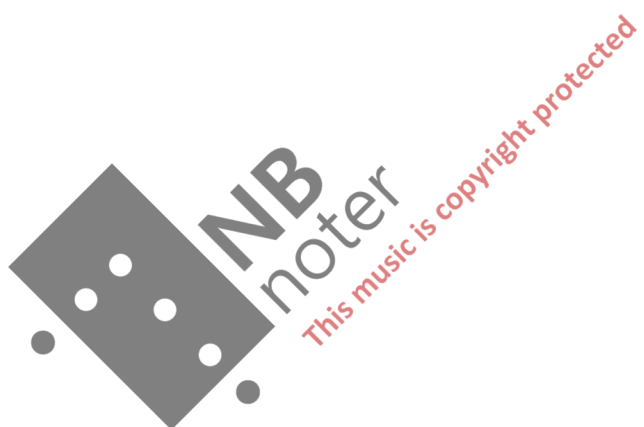
Primo 1

{ *mp secco*

*An airy and light registration should be strived for. Preferably with 4 'in secondo.
Avoid long sections with the use of 16 'in the pedal.*

Secondo 2

{ *mp 4' secco*



p 1

s 2

1

p 1

mf

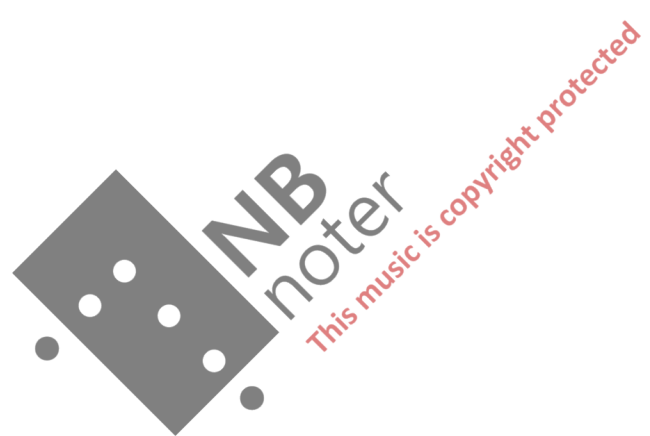
s 2

15

mf

3

mf



22

p 1

f

3

mp

s 2

22

f

mp

mp

2

p 1

s 2



p 1

s 2

3

mf

p 1

s 2

p 1

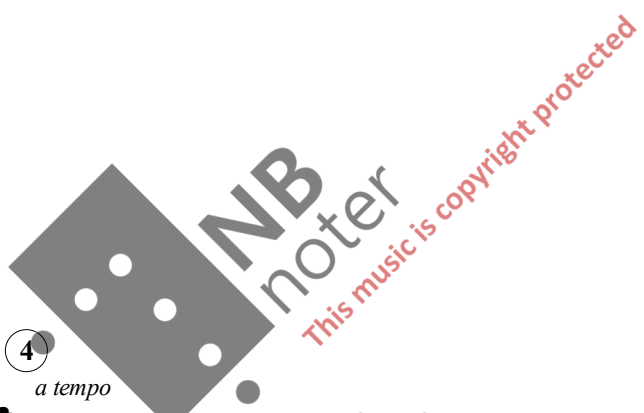
s 2

molto rit. *gliss. approximate pitch* *a tempo*

4

3

3



6

58

p 1

I

II

3

58

s 2

I

II

3

5

p 1

{II *mf*}

64

s 2

mf

12

13

70

p 1

70

s 2

7

6

p 1

s 2

76

This block contains the first system of music, starting at measure 6. It features two staves: p 1 (piano) and s 2 (saxophone). The piano part has rests for the first two measures, followed by chords in the third measure. The saxophone part has a melodic line with eighth notes and rests, with a key signature change to one flat in the third measure. The time signature is 3/4.

p 1

s 2

79

This block contains the second system of music, starting at measure 79. The piano part has chords and eighth-note patterns. The saxophone part has a melodic line with eighth notes and rests. The time signature is 3/4. A watermark 'NB noter' and 'This music is copyright protected' is visible over the score.

p 1

s 2

84

This block contains the third system of music, starting at measure 84. The piano part has chords and eighth-note patterns. The saxophone part has a melodic line with eighth notes and rests. The time signature is 3/4.

8

7

p 1

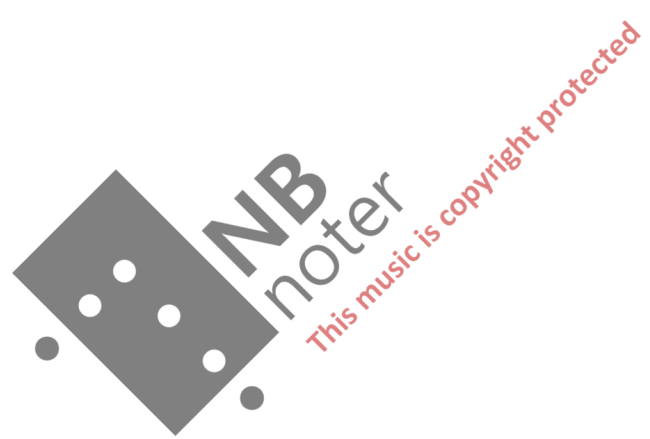
mp

mp

s 2

mp

mp



101

p 1

101

s 2

101

108

p 1

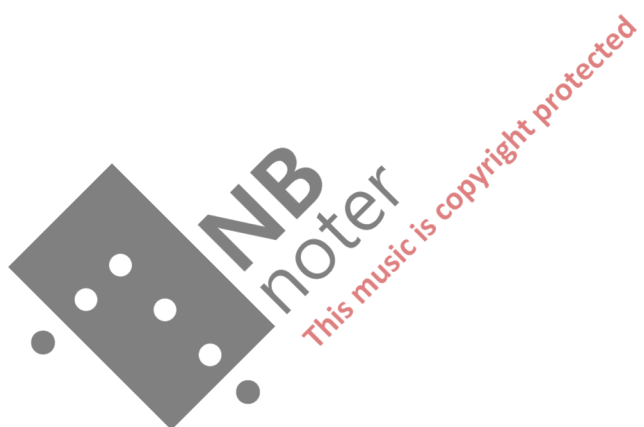
8

mf

s 2

mf

mf



115

p 1

9

f

3

s 2

3

f

mp

p 1

123

mp

s 2

123

mf + reeds 4'



p 1

131

10

mf

s 2

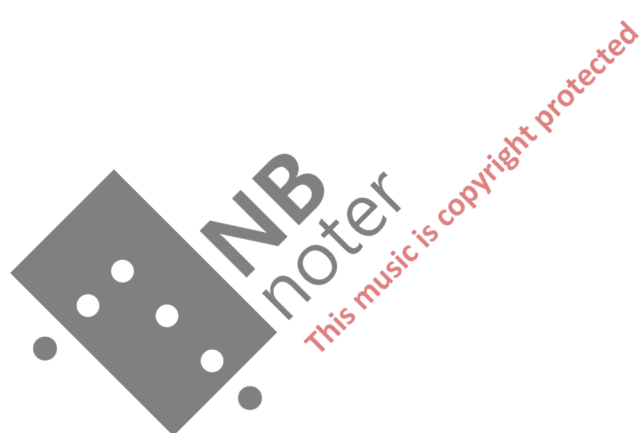
131

mf

mf

p 1

s 2



p 1

s 2

146

molto rit.

gliss. approximate pitch

11

a tempo

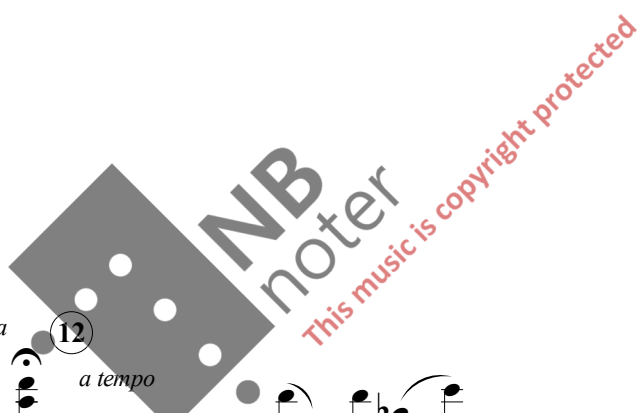
p 1

s 2

p 1

longa (12) a tempo

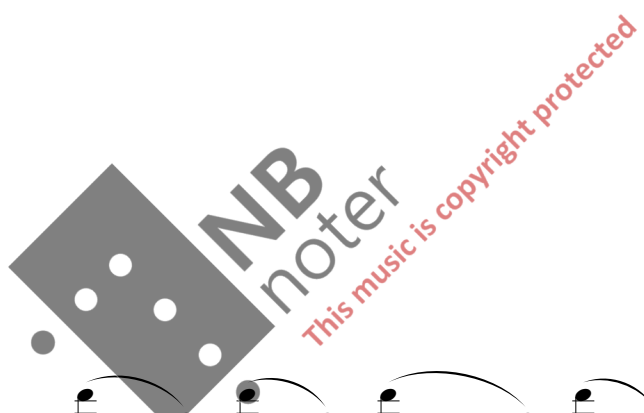
s 2



168

p 1

s 2



176

p 1

fff

176

s 2

fff