

Nils Henrik Asheim

CELLO STORIES

for cello solo
and string orchestra



NB
noter

This music is copyright protected

CELLO STORIES

cello solo
string orchestra minimum (44431)

durata: 25 minutes

Nils Henrik Asheim 2009 - revised 2015

Premiere: Håkon Samuelsen (solo), The Trondheim Soloists
Oslo Chamber Music Festival Aug 15, 2009
Revised in collaboration with Marianne Baudouin Lie
Commissioned from The Trondheim Soloists with support from the Norwegian Cultural Fund

www.nilshenrikasheim.no
n.h.asheim@gmail.com

score and parts available from www.nb.no
noter@nb.no

etc ad lib = improvise in similar way
indiv = individual speed, the players are not synchronized
legno = col legno battuto (unless "tratto" is written)
pont = sul ponticello
x-pont = molto ponticello (overtones rather than fundamental pitch)

3 degrees of slow bow:
scrape = with pitch and a light crush sound
grind = extremely slow bow, high pressure, no pitch
stop bow = separate notes

light finger pressure = left hand finger loosely on the string, creating diffuse sound with a little pitch
light/fast = light finger pressure + fast bow movement

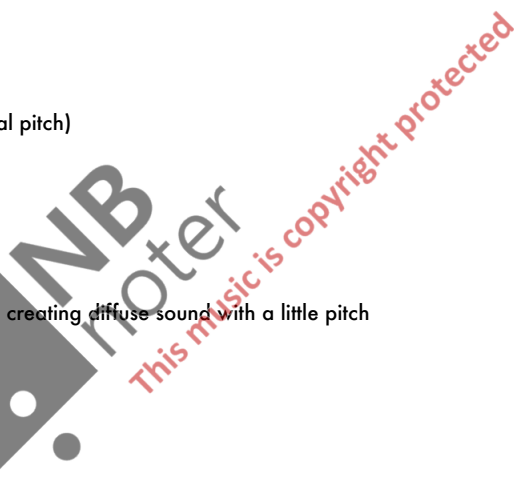
x across the note stem = damp string, no pitch

↖ = on bridge

♯ ♯ ♭ ♭ = quarter-tones

○ = circular bowing

z = fast tremolo  = exact tremolo



CELLO STORIES

Violin 1
Musical notation for Violin 1, including dynamics like *2 soli*, *gli altri*, *p*, *sim.*, and *pp*. Performance instructions include *very fast & light bow*, *circular bowing damped string, no pitch*, and *light finger pressure*.

Violin 2
Musical notation for Violin 2, including dynamics like *2 soli*, *gli altri*, *p*, *sim.*, and *pp*. Performance instructions include *very fast & light bow*, *circular bowing damped string, no pitch*, and *light finger pressure*.

Viola
Musical notation for Viola, including dynamics like *p* and *mp*. Performance instructions include *x-pont*, *ord*, and *senza vibr*.

Cello Solo
Musical notation for Cello Solo, including dynamics like *mf*, *mp*, and *p*. Performance instructions include *pont* and *ord*.

Celli
Musical notation for Cello section, including dynamics like *p*. Performance instructions include *arco* and *pizz*.

Contrabasso
Musical notation for Contrabasso, including dynamics like *p*.

Tempo: $\text{♩} = 66$

6

Vln.1
p
sul III
etc ad lib., indiv.
p

Vln.2
p
pont
pp
8va

Vla.
2 strings (non div.)
pont
pp
pizz
mp

Solo
ord
pont
ord
pont
ord
mp
mf
p

Vcl.
pizz
p
arco
p

C.bass

9

Vln.1
A = 84
div. in 2
f
spicc.

Vln.2
8va
tutti
pizz
f

Vla.
tutti
arco
ff

Solo
pont
ord
pont
ord
sul III
p
A = 84
f

Vcl.
pizz
f
pizz
f

C.bass
legno
f

13

Vln.1

Vln.2

Vla.

Solo

Vcl.

C.bass

mf

mf

mf

ff

ff

senza vibr

senza vibr

senza vibr

arco

arco

17

Vln.1

Vln.2

Vla.

Solo

Vcl.

C.bass

f

f

f

f

pizz

pizz

ord

ord

ord

ord

20 *pont senza vibr* *mf* *ord* *ff* *f*

Vln.1

Vln.2

Vla.

Solo *p* *ord* *f* *pizz*

Vcl.

C.bass

24 *pont* *ord* *f* *p sub.* *arco*

Vln.1

Vln.2

Vla.

Solo *p* *ord* *f* *p*

Vcl.

C.bass

B ♩ = 66

28

Vln.1 *p* *mf* *f* solo *mp* stop bow

Vln.2 *p* *mf* *f* solo *mp* stop bow

Vla. *p* *mf* *f* solo *mp* stop bow

Solo *mf* *mp* *mf* *f* *mp* *p* solo *mp* stop bow

Vcl. *pizz* *p* *mf* *f* solo *mp* stop bow

C.bass *p* *mf* solo *mp* stop bow

legno *mp* *f* ord

32

Vln.1

Vln.2

Vla. *tutti* *mp*

Solo

Vcl. *mp*

C.bass

37

Vln.1

Vln.2

Vla.

Solo

Vcl.

C.bass

mp *mf* *mf* *mf* *mf* *f* *f* *pizz* *mf* *p* *tutti* *p* *p* *f* *f* *mp* *mp* *mp* *pp*

41

Vln.1

Vln.2

Vla.

Solo

Vcl.

C.bass

mp *mf*

45 **C** ♩ = 84

Vln.1 **tutti** *pizz* *f*

Vln.2 **tutti** *f*

Vla. **tutti** *pizz* *f*

Solo **C** ♩ = 84 *f* *battuto* *ord* *batt.*

Vcl. *pizz* *very dry. damp string.* *f*

C.bass *f*

48 *arco* *ff* *f*

Vln.1 *ff* *f*

Vln.2 *f*

Vla. *f*

Solo *ord* *batt.* *ord* *batt.*

Vcl. *f*

C.bass *f*

51

Vln.1

Vln.2

Vla.

Solo

Vcl.

C.bass

ff *pizz* *f* $\text{♩} = 48$ **D**

batt. *ord* $\text{♩} = 48$ **D** *1/4 tone* *p*

f *ppp*

57

Vln.1

Vln.2

Vla.

Solo

Vcl.

C.bass

p *scrape (slow bow, with pitch and a light crush sound)* *scrape* *scrape* *sim.*

arco *scrape* *scrape* *sim.*

1/8 tone *1/8 tone*

knock on string, close to bridge, drum-like sound *pp*

knock on string, close to bridge, drum-like sound *pp*

65

Vln.1

Vln.2

Vla.

Solo

Vcl.

C.bass

arco p

arco p

1/4 tone

1/8

7

3

3

72

Vln.1

Vln.2

Vla.

Solo

Vcl.

C.bass

knock on string, close to bridge, drum-like sound

pp

pp

ppp

arco legno tratto

ppp

1/4

1/8

1

3

3

79

Vln.1

Vln.2

Vla.

Solo

Vcl.

C.bass

scrape

knock

arco

pont ord

mf

p

mp

E ♩ = 66

86

Vln.1

Vln.2

Vla.

Solo

Vcl.

C.bass

solo

gli altri

light/fast

pp

2 soli

gli altri

pizz

mf

mf

arco

legno battuto

senza vibr

mf

p

arco pont

88

Vln.1

x-pont
pp

Vln.2

x-pont
pp

Vla.

(as close to bridge as possible)
mp pizz legno

Solo

88
flimmering vibrato p senza vibr

Vcl.

light finger pressure
pp light finger pressure
pp

C.bass

91

Vln.1

Vln.2

Vla.

Solo

91
wide, medium slow vibrato
p

Vcl.

C.bass

F ♩ = 48

This block contains the musical score for measures 95 to 102. The parts are Vln.1, Vln.2, Vla., Solo, Vcl., and C.bass. The score includes dynamic markings (p, mf, mp, f, pp), performance instructions like 'div. in 2', 'senza vibr pont', 'arco ord', 'solo gli altri', and 'light, accordion-like sound'. Measure numbers 95 and 102 are clearly marked at the beginning of their respective systems.

107 *solo ord* *p* *(non dim.)*

Vln.1

Vln.2

Vla.

Solo

Vcl.

C.bass

mp

G ♩ = 84

113 *tutti* *f* *pizz* *f* *arco* *p* *sim.* *f* *pizz* *f*

116

Vln.1

Vln.2

Vla.

Solo

Vcl.

C.bass

mf

ff

119

Vln.1

Vln.2

Vla.

Solo

Vcl.

C.bass

121

Vln.1

Vln.2

Vla.

Solo

Vcl.

C.bass

125

Vln.1

Vln.2

Vla.

Solo

Vcl.

C.bass

128

Vln.1

Vln.2

Vla.

Solo

Vcl.

C.bass

132

Vln.1

Vln.2

Vla.

Solo

Vcl.

C.bass

H $\text{♩} = 48$

sim, ad lib, more and more space between groups and notes

sempre p

ffp

arco

f

ff

ffp

sempre p

ffp

sempre p

H $\text{♩} = 48$

sim, ad lib, more and more space between groups and notes

sempre p

ffp

ffp

ffp

sempre p

ff

ffp

sempre p

137

Vln.1 *senza vibr*
f

Vln.2

Vla. *mp* *senza vibr*
f

Solo *mf* *p* *mf*

Vcl.

C.bass *senza vibr*
f

142

Vln.1 *f* *pp*
pont ↔ tasto (indiv.)

Vln.2 *p* *sim.*

Vla. *f*

Solo *f*

Vcl.

C.bass *f*

148

Vln.1

Vln.2

Vla.

Solo

Vcl.

C.bass

p

f

etc ad lib.

p

f

p

etc ad lib.

p

etc ad lib.

f

153

Vln.1

Vln.2

Vla.

Solo

Vcl.

C.bass

tasto

ppp

tasto

p

ppp

p

ppp

p

ppp

p

ppp

p

ppp

p

ppp

p

ppp

159 $\text{♩} = 66$

Vln.1 *solo* *shy and alert* *p*
gli altri *pizz* *p*

Vln.2 *solo* *shy and alert* *p*
gli altri *tasto* *ppp* *p*

Vla. *pizz* *p*

Solo *pont* *ord* *mf* *III* *p*

Vcl. *pizz* *p* *sim.*

C.bass *pizz* *p*

164

Vln.1

Vln.2

Vla.

Solo *p*

Vcl.

C.bass



168

Vln.1

Vln.2

Vla.

Solo

Vcl.

C.bass

solo

arco

gli altri arco

mp

mf p

pizz

alla punta

172

Vln.1

Vln.2

Vla.

Solo

Vcl.

C.bass

tutti div. in 2

ppp

ppp

p

pp

arco

ppp

J ♩ = 48

1/4 tone

11

Saltando and pressing down the bow,
like wings of an insect.
Aim for a continuous sound in the group.

179

Vln.1 *p arco*

Vln.2 *p*

Vla.

Solo *1/8 tone*

Vcl. *arco ppp*

C.bass *x-pont pp*

[K] ♩ = 84

188

Vln.1 *pont ff*

Vln.2 *pizz f*

Vla. *arco appassionata ff*

Solo *f*

Vcl. *arco f*

C.bass *f*

192

Vln.1

Vln.2

Vla.

Solo

Vcl.

C.bass

196

Vln.1

Vln.2

Vla.

Solo

Vcl.

C.bass

NB noter
This music is copyright protected

L ♩ = 48

200

Vln.1

Vln.2

Vla.

Solo

Vcl.

C.bass

mf

pp

p

pp

p

mp

ppp

205

Vln.1

Vln.2

Vla.

Solo

Vcl.

C.bass

light finger pressure

gli altri div. in 2

pont

ppp

p

mp

mf

pp

espr. con fantasia small notes played rapidly

mp

pp

espr. con fantasia small notes played rapidly

p

p

ppp

209

Vln.1 *pp* *espr. con fantasia*
small notes played rapidly

Vln.2 *mf* *espr. con fantasia*
small notes played rapidly

Vla. *mp* *pizz*

Solo

Vcl. *mp* *pizz* *p*

C.bass

div. in 2 *pont*

solo

212

Vln.1 *p*

Vln.2 *p*

Vla. *s*

Solo

Vcl. *p*

C.bass

215

etc ad lib., indiv.
all players improvise on the given
pitches, varying the figures

Vln.1

Vln.2

Vla.

Solo

Vcl.

C.bass

etc ad lib., indiv.
all players improvise on the given
pitches, varying the figures

pp

solo

218

Vln.1

Vln.2

Vla.

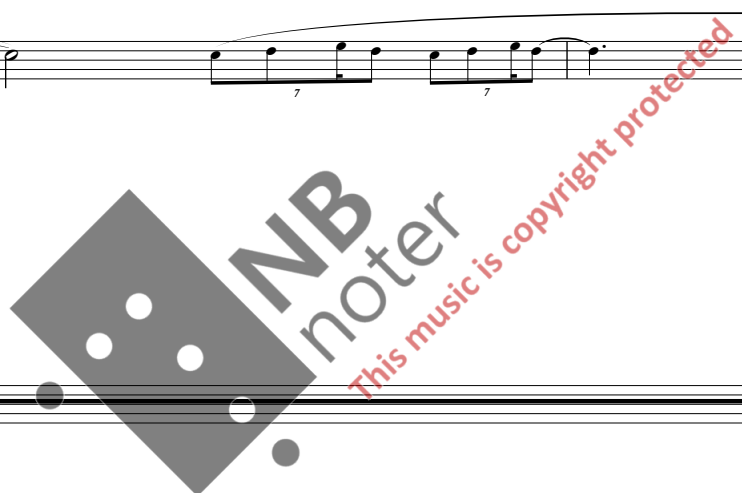
Solo

Vcl.

C.bass

etc ad lib.
all players improvise on the given
pitches, varying the figures

espr. con fantasia



220

Vln.1 *gradually lighter finger pressure*

Vln.2 *pp*
gradually lighter finger pressure

Vla. *pp*
gradually lighter finger pressure

Solo 220 *pp*
gradually lighter finger pressure

Vcl. *pp*
gradually lighter finger pressure

C.bass *suone reale*
etc ad lib.
E and A strings
p

224

Vln.1

Vln.2

Vla.

Solo 224 *p*
gradually lighter finger pressure

Vcl. *p*
gradually lighter finger pressure

C.bass *pp*

231 *no pitches, only whispering sound*

Vln.1 *ppp*
no pitches, only whispering sound

Vln.2 *ppp*
no pitches, only whispering sound

Vla. *ppp*

Solo 231 *no pitches, only whispering sound*

Vcl. *ppp*
no pitches, only whispering sound

C.bass *no pitches, only whispering sound*
ppp

237 **M** ♩ = 48

Vln.1 *tasto* *pp*

Vln.2 *div.* *p*

Vla. *div.* *p*

Solo 237 **M** ♩ = 48 *p* IV III V

Vcl. *p*

C.bass *p* *ppp* *suone reale*

244 *grind (extremely slow bow, heavy pressure, no pitch)*

Vln.1 *p* *bow moving also in direction from bridge*

Vln.2 *p*

Vla. *p*

Solo 244 *pp* 0 III IV 0 III IV

Vcl. *pp*

C.bass *pp* *ppp*

252

Vln.1 *tasto* *pp* *p* continue with single sounds, randomly

Vln.2 *tasto* *pp* *p* continue with single sounds, randomly

Vla.

Solo 252 *p* *ppp* *pp*

Vcl. *p* *pp*

C.bass *p* *ppp* *pp*

260

Vln.1 *tasto* *pp* *p* *p* jumping bow

Vln.2 *tasto* *pp* *p*

Vla.

Solo 260 *p*

Vcl. *p*

C.bass *ppp* *p*

267

Vln.1 *jumping bow* *p*

Vln.2 *solo legno* *mp* *gli altri* *pp*

Vla. *non div.* *p* *IV*

Solo

Vcl. *pp* *jumping bow* *ord* *pp* *pp* *pp* *pp*

C.bass *pp* *p*

272

Vln.1 *jumping bow* *p*

Vln.2 *pp* *pp* *pp*

Vla. *p* *IV* *p*

Solo *mf*

Vcl. *pp* *pp* *pp* *ord*

C.bass *pp* *pp* *pp*

278 **N** ♩ = 72

Vln.1 arco *p* *p*

Vln.2 pizz *p* *mf* arco

Vla. arco *p* *mf* pizz *p* *f*

Solo 278 **N** ♩ = 72 *p* *mf*

Vcl. *p*

C.bass *p* pizz *suone reale*

282

Vln.1 *p* *mf*

Vln.2 *p* *mf* *p*

Vla. arco *p* *mf* pizz *p* *f*

Solo 282 *mf* *p*

Vcl. *p*

C.bass *mf* *p* *mf*

285

Vln.1

Vln.2

Vla.

Solo

Vcl.

C.bass

288

Vln.1

Vln.2

Vla.

Solo

Vcl.

C.bass

291

Vln.1

Vln.2

Vla.

Solo

Vcl.

C.bass

294

Vln.1

Vln.2

Vla.

Solo

Vcl.

C.bass

Score

297 $\text{♩} = 84$

Vln.1 *f*

Vln.2 *f*

Vla. *ff*

Solo

Vcl. *f* *ff* *f* *ff* *f* *ff*

C.bass *f*

301

Vln.1

Vln.2

Vla. *p* *ff* *p* *ff* *sim.*

Solo

Vcl. *ff* *pizz* *f* *pizz* *f* *pizz*

C.bass *f* *pizz* *f* *pizz* *arco* *pizz*

304

Vln.1: Treble clef, 6/8 time signature. Features complex sixteenth-note patterns with sixteenth rests and sixteenth beams. Dynamics include *f*.
Vln.2: Treble clef, mostly rests.
Vla.: Bass clef, 6/8 time signature. Features sustained chords with dynamics *pp*.
Solo: Treble clef, mostly rests.
Vcl.: Bass clef, 3/8 time signature. Features triplet patterns with dynamics *f*.
C.bass: Bass clef, 6/8 time signature. Features sustained chords with dynamics *pp*. Includes markings for *arco* and *pizz*.

P ♩ = 48

307

Vln.1: Treble clef, 6/8 time signature. Features *pont* markings and dynamics *pp* and *mf*.
Vln.2: Treble clef, 6/8 time signature. Features *arco* markings and dynamics *pp*, *p*, *mp*, and *mf*.
Vla.: Bass clef, 6/8 time signature. Features dynamics *pp* and *mp*.
Solo: Treble clef, 6/8 time signature. Features dynamics *p* and *mf*.
Vcl.: Bass clef, 6/8 time signature. Features *arco* and *pont* markings and dynamics *mp*, *f*, *pp*, and *mp*.
C.bass: Bass clef, 6/8 time signature. Features *arco* and *pont* markings and dynamics *mp*, *f*, *pp*, and *mp*.

P ♩ = 48

307

Solo: Treble clef, 6/8 time signature. Features dynamics *p*, *mf*, and *f*.
Vcl.: Bass clef, 6/8 time signature. Features *arco* and *pont* markings and dynamics *mp*, *f*, *pp*, and *mp*.
C.bass: Bass clef, 6/8 time signature. Features *arco* and *pont* markings and dynamics *mp*, *f*, *pp*, and *mp*.

Q ♩ = 84

312

Vln.1
p < f < ff

Vln.2
mp < f < ff
ord
f marc.

Vla.
mp < f < ff
noisy
ord
f
ord
f marc.

Solo
p < f
Q ♩ = 84

Vcl.
noisy
mp < f < ff

C.bass
mp < f < ff

317 ord

Vln.1
f

Vln.2
ord
f marc.

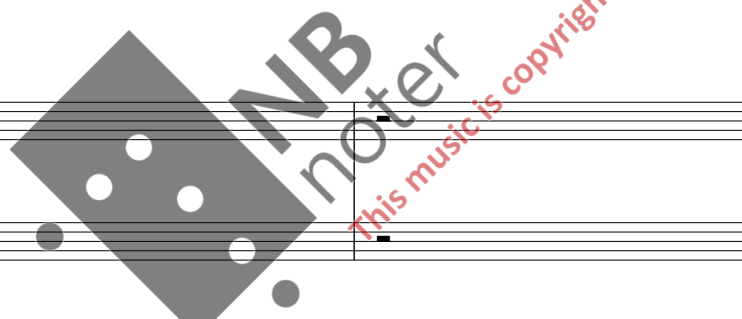
Vla.
ord
f marc.

Solo
317
f

Vcl.
ord
f

C.bass
ord
f

5/4



319

Vln.1

Vln.2

Vla.

Solo

Vcl.

C.bass

321

Vln.1

Vln.2

Vla.

Solo

Vcl.

C.bass

323

Vln.1

Vln.2

Vla.

Solo

Vcl.

C.bass

326

Vln.1

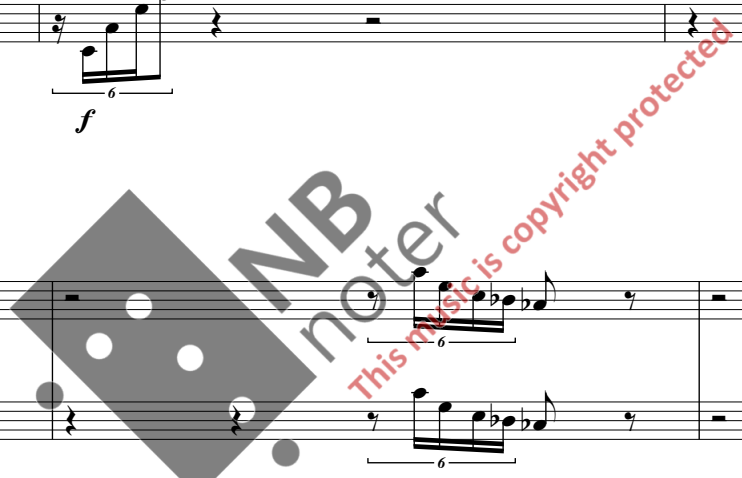
Vln.2

Vla.

Solo

Vcl.

C.bass



329

Vln.1

Vln.2

Vla.

Solo

Vcl.

C.bass

332

Vln.1

Vln.2

Vla.

Solo

Vcl.

C.bass

$\text{♩} = 66$

R stop bow

div. *f* random number of notes, irregular

pp

mp

pp

f *mp*

f *mp*

mf *mp*

f random number of notes, irregular

stop bow

f random number of notes, irregular

stop bow

f

f

335

Vln.1

Vln.2

Vla.

Solo

Vcl.

C.bass

mf

mp

p

mf

p

pp

p

mf

p

f

3

3

3

3

3

3

3

3

3

3

3

3

3

3

3

3

3

6

6

6

6

6

6

6

6

6

6

6

8

5

3

3

3

5

5

5

5

5

5

3

3

338

Vln.1

Vln.2

Vla.

Solo

Vcl.

C.bass

p

p

gli altri

1. legato tremolo over 2 strings

2. *p* sim.

2.

p

legato tremolo over 2 strings

p

338

mf

p

pp

p

mf

mf

piu f

3

3

3

3

3

3

3

3

3

3

3

3

6

6

6

6

6

6

6

6

6

6

6

8

5

3

3

5

5

5

5

5

341

Vln.1

Vln.2

Vla.

Solo

Vcl.

C.bass

mf

mf

sim (legato tremolo)

p

legato tremolo over 2 strings

1. sim.

2. sim.

mf

mf

con vibr

p

344

Vln.1

Vln.2

Vla.

Solo

Vcl.

C.bass

sim (legato tremolo)

p

mf

cresc.

mf

p

f

p

348

Vln.1

Vln.2

Vla.

Solo

Vcl.

C.bass

353

Vln.1

Vln.2

Vla.

Solo

Vcl.

C.bass

Rit.

solo

gli altri

solo

$\text{♩} = 48$

357

Vln.1

Vln.2

Vla.

Solo

Vcl.

C.bass

362

Vln.1

Vln.2

Vla.

Solo

Vcl.

C.bass

366

Vln.1

1. *f*

2. *f*

div.

Vln.2

mf *f* *p* *mf*

(end of legato tremolo)

Vla.

mf *f* *p* *mf*

(end of legato tremolo)

Solo

366

Vcl.

mf

C.bass

sempre f

370

Vln.1

ff

Vln.2

tremolo ord.

mf *f* *ff*

piu f

Vla.

tremolo ord.

mf *f* *ff*

Solo

370

piu f

Vcl.

piu f *ff*

C.bass

piu f

374 **T** ♩ = 66

Vln.1 *ff* *ff* *ff* *pp* light finger pressure

Vln.2 *ff* *ff* *ff* *pp* light finger pressure

Vla. *ff* *ff* *mp* light finger pressure *sim.* *ff* *pp*

Solo *ff* *p* *pp* *mp* *ff* *f* *pp* *f* *ff* *f* *pp*

Vcl. *ff* *p* *pp* *mp* *ff* *f* *pp* *f* *ff* *f* *pp*

C.bass *ff* *p* *pp* *mp* *ff* *f* *pp* *f* *ff* *f* *pp*

senza vibr *f* *screamy* *1/4 t.* *3* *1/4 t.*

379 *Senza misura*

Vln.1 *ff* *x-pont* *pp ad lib, unstable pitch*

Vln.2 *ff* *x-pont* *pp ad lib, unstable pitch*

Vla. *sim.* *ff* *x-pont* *pp ad lib, unstable pitch*

Solo *3* *1/4 t.*

Vcl. *ff* *pont* *ff* *pont*

C.bass *ff* *pont* *ff* *pont*

8va- *pp ad lib, unstable pitch*

8va- *pp ad lib, unstable pitch*

8va- *pp ad lib, unstable pitch*

8va- *pp ad lib, unstable pitch*

U CADENZA

Vln.1 *sempre p*

Vln.2 *sempre p*

Vla. *mp* extremely high harmonics on C string *sempre p*

Solo *sempre p* **U** CADENZA *Impro. Vary from tasto to x-ponticello. Vary pressure and position of left hand fingers.* *f*

Vcl. *x-pont* *dynamics: follow conductor*

C.bass *x-pont* *dynamics: follow conductor*

384 *♩ = 84*

Vln.1 *play gradually slower*

Vln.2 *play gradually slower*

Vla. *senza vibr* *mf*

Solo *ff* *mf* *cresc.* *sim.* *6* *3* *6* *6*

Vcl. *senza vibr* *mf*

C.bass *ord* *mf*



390

Vln.1

Vln.2

Vla.

Solo

Vcl.

C.bass

395

Vln.1

Vln.2

Vla.

Solo

Vcl.

C.bass

398 **Poco a poco rit.**

Vln.1 *end on a random note and keep it (senza vib)*

Vln.2 *end on a random note and keep it (senza vib)*

Vla.

Solo 398 **Poco a poco rit.** *f*

Vcl.

C.bass

401 **Senza misura, quasi improvvisando**

Vln.1

Vln.2

Vla.

Solo 401 **Senza misura, quasi improvvisando** *Fill in with arpeggios but keep a legato melody style*

Vcl.

C.bass

404

Vln.1

Vln.2

Vla.

Solo

Vcl.

C.bass

p

(senza misura)

V Senza misura

406

Vln.1

Vln.2

Vla.

Solo

Vcl.

C.bass

free rhythm

pp

free rhythm

pp

free rhythm

pp

free rhythm

pp

vibrato

p

vibrato

p

V Senza misura

p dolce

7

7

7

7

repeat ad lib.

p

W ♩ = 66

very fast & light bow

Vln.1

411

p

FINE

Vln.2

p

p

Vla.

p

p

W ♩ = 66

Solo

411

pont

p

FINE

Vcl.

p

arco

pizz

p

C.bass

p

p

