

Lydbølgeskulpt

for thirteen musicians
divided in four different ensembles
not able to hear each other
while performing

Commissioned by
Arktisk Sinfonietta
with
support from
Art Council Norway

Duration approx. 20 minutes



Movements:

I. Ro 1

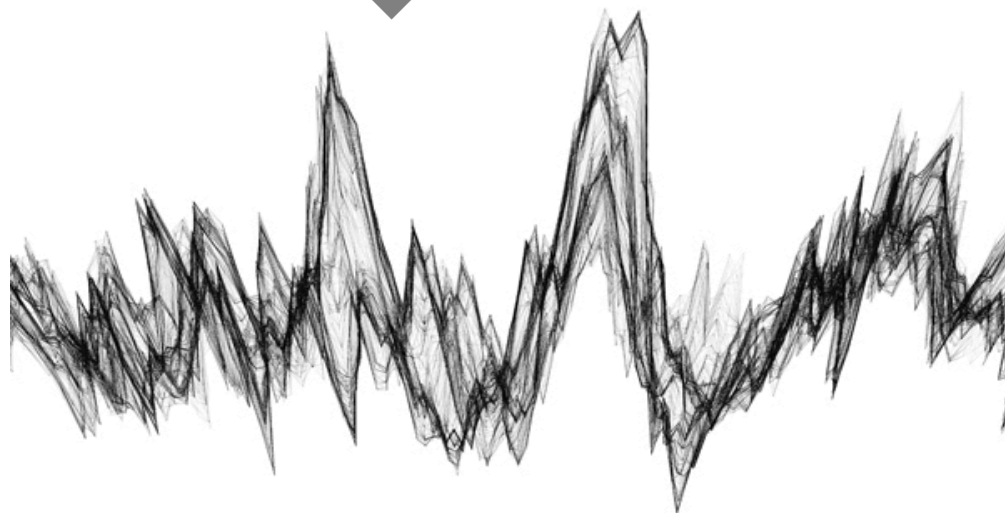
II. Ro 2

III. Til

IV. Fiskeskjær

Titles of movements based on a
Norwegian traditional song:

"Ro, ro til fiskeskjær
mange fisker får vi der
én til far og én til mor
én til søster og én til bror
og to til den som fisken dro
og det var lille (barnets navn)"



"Lydbølgeskvulp" is a work consisting of four ensembles performing four different pieces at once.

This is coordinated by timecodes, specifically notated points in time within each score. The scores are here presented in order.

The four ensembles are not supposed to hear each other while playing. They should be placed in four different rooms, transferred by microphones and speakers to an audience. The timecodes are all that connect them. A stopwatch is placed in front of each ensemble, guiding them through it all.

The piece should, however, not be played using a click track, but rather by being as exact as possible in following the given tempi and notated rhythms. At some points, like 1'30' into the piece, the ensemble should be lined up with the timing.

Other than that there is flexibility. The whole piece is written with exact time signatures, so it is possible to play in synchronicity anyway.

There are four movements. These divide the time line. There should be a synchronized start in each movement, coordinated by a time conductor.

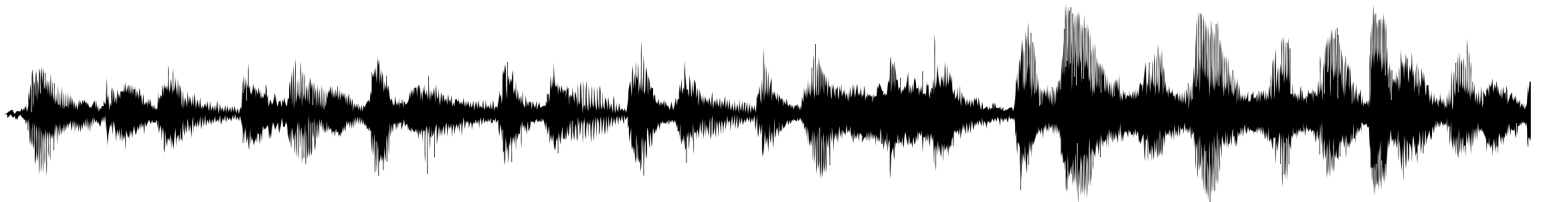
4 ensembles:

I. Trumpet, Violin, Violoncello and Percussion

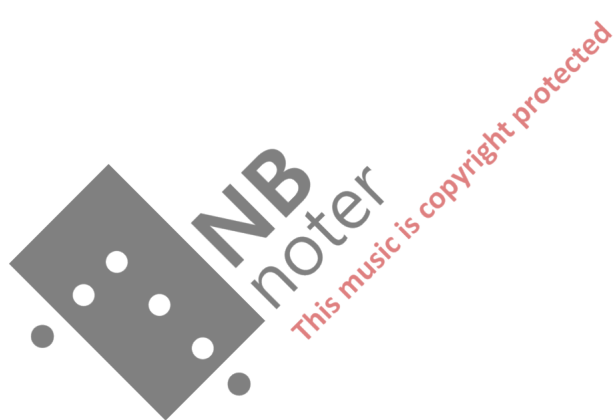
II. Flute, Trombone and Viola

III. Oboe, Clarinet and Electric Guitar

IV. Bassoon, Accordion and Contrabass



Ensemble I



17 fl. tongue open 1'10"

Tpt. *mf*

Vln. *mf* 3 *mf* sul tasto *mp* 3 *mf*

Vc. (sul pont.) *mp* ord. *p* *mf* 3

Perc. To Gong Gong hard mallets *pp* To Mar. Marimba hard mallets *mf* To Glock. Glockenspiel hard mallets *mp* 3

23 Cup mute 1'30" open

Tpt. *p* *mp* 8va *p* ord. *f* *fp* *fff*

Vln. *mp* sul tasto *p* ord. *f* *fp* *fff*

Vc. *mp* *mf* *mp* ord. *f*

Perc. 3 Anvil 5 To Tri. Triangles *pp* *pp* *pp* To Mar.

$\text{♩} = 56$

29 open $\text{♩} = 112$

Tpt. *p* *mf* *p*

Vln. *mp* *f* *p*

Vc. *mf* *p*

Perc. Marimba medium mallets *mp*

32 1'45"

Tpt. *f p*

Vln. *mf p*

Vc. *f p*

Perc. *f mp*

35 2'00"

Tpt. *f p*

Vln. *ff p mf*

Vc. *mf*

Perc. *f mp mf*

38 2'00"

Tpt. *mf p*

Vln. *mf p*

Vc. *p f mp*

Perc. *mp f mp*

41 2'15"

Tpt. *mf* *p*

Vln. *f* *p*

Vc. *f* *mf* *p*

Perc. *mp* *f*

44

Tpt.

Vln.

Vc.

Perc. *mp*

48 2'35"

Tpt. Straight mute *mf* *mp* *p*

Vln. *mf*³ *pp*

Vc. *mp*³ *pp*

Perc. *mf*

51 2'45" cup mute

Tpt.

Vln.

Vc.

Perc.

f *pp* *mf* *pp* *mf* *mp*

To Glock. soft mallets Glockenspiel To Tri. Triangles

58 3'00" 3'10"

Tpt.

Vln.

Vc.

Perc.

mp *mf* *mp*

To Glock. Glockenspiel medium mallets

mf = 74

63

Tpt.

Vln.

Vc.

Perc.

pp *mp* *pp* *p* *mf* *p* *mf* *p*

67 3'35"

Tpt. *p pp p ppp*

Vln. *mp p mf p pp* ord.

Vc. *mp p mf p pp* ord. *p*

Perc. *mf mp p mf*

71 4'00" flap

Tpt. *mf*

Vln.

Vc. *mf p*

Perc. *mf mp p mf* To W.B.

75 ord. Straight mute

W.B. *f mf mp mf f*

Vln. *mf f* pizz

Vc. *mp mf f mf pp fff pp pp f* arco

Perc. *mf mp p mf* Wood Block medium mallets To Chim. Chimes hard beater *mf*

82 4'30" open 5'05"

Tpt. *mp*> *p* *mp* *mf* *mp*> *p* *mp* *mf* *mp*> *mp*

Vln. arco pizz ord. pizz arco
mf> *mp* *mf* *f* *mf*> *mp* *mf* *f* *mf*> *mp*

Vc. Sul pont. ord. Sul tasto ord.
pp *mp* *mp* *mf* *ppp*

Perc. triangle sticks hard beater
p *mp* *p*



Lydbølgeskulpt

Ensemble I

II. Ro 2

♩ = 60

Trumpet in B♭

Violin

Violoncello

Percussion

Gong triangle sticks

Anvil triangle sticks

Glockenspiel triangle sticks

Triangles

Anvil triangle sticks

p *mp* *p* *mp*

mp *mp* *f* *mp*

6 0'15

Tpt.

Vln.

Vc.

Perc.

Chimes triangle sticks

p *mp* *mf* *p* *mf* *mp* *mf*

mp *mf* *fp* *ff* *mf* *f* *mp* *mf* *mp*

mf *mp*

12 ♩ = 68 0'40"

Tpt.

Vln.

Vc.

Perc.

Triangles triangle sticks

Glockenspiel triangle sticks

mp *mf* *p* *mf* *p* *mp* *mf*

mf *pp* *fp* *p*

p *f* *mf*

17 1'00" flap

Tpt. *mf* *p* *mf* *p* *ff*

Vln. *f* *mf* *ff*

Vc. *mf* *ff*

Perc. *mp* *mf* *mp* Chimes triangle sticks Wood Block hard mallets *ff*

26 = 60 1'30" ord. pizz (two finger pizz) hard beater

Tpt. *ff* *p* *mp*

Vln. *mp* *p*

Vc. *mp*

Perc. *p* *mf* *mf* To Chim. Chimes

35 1'45"

Tpt. *mp* *p* *mf* *mp* *mf*

Vln. *mp* *p* *mf* *mp* *mf*

Vc. *mf* *mp* *mf*

Perc. *p* To WB and Anv. Wood Block Anvil hard mallets *f* *mf* *f*

40 2'00"

Tpt. *mf* *p* *mp* *mf* *mf mp* *mf*

Vln. *p* *mp* *mf*

Vc. *mp* *ff*

Perc. *f* *mf* *mf* *mp* *mf mp*

Wood Block

46 $\text{♩} = 56$ 2'20"

Tpt. *mp* *p* *mf*

Vln. *mp*

Vc. *f*

Perc. *mf* *mp* *mf* *mp* *mf* *mp* *mf* *mp* *mf* *mp*

51 $\text{♩} = 98$ 2'40"

Tpt. *p* *mf* *p*

Vln. *mf*

Vc. *mf*

Perc. *mf* *mp* *mf* *mp*

To Anv., W.B and Large Triangle

hard mallets

61 2'50" Cup mute 3'00"

Tpt. *p* 3 *mp* 3

Vln. arco *p* 3 *mp* 3

Vc. arco *pp* *ppp*

Perc. Anvil Woodblock Large Triangle *mp* 3 *p*

68

Tpt. *mf* 3 *p* *mp* *mp* 3 *p* 3

Vln. *mf* 3 *p* *mf* 3 *p*

Vc. *p*

Perc. *mp* 3 *mf* *p* *mf* *p* *mp*

73 3'10" 3'20" $\text{♩} = 92$ open

Tpt. *mp* 3 *p* *mf* *mp* *mf* *p* 3 *mf*

Vln. *mp* 3 *mf* *p* *mf* *p* *mp*

Vc. *mp* 3 *f* 3 *p* < *mf* *p* < *mf*

Perc. 3 *p* *mf* *mp* *p*

81 3'30"

Tpt. *mp* *mf* *p* *mf* *mp*

Vln. *mf* *p* *<mf* *mp*

Vc. *mf*

Perc. *mp* *p* *mf* *p* *mf* *mp* *mf*

86 $\text{♩} = 72$

Tpt. *mf* *mf* *mp* *mf* *mp* *mf* *mp*

Vln. *mf* *mp* *f* *mf* *f* *mp*

Vc. *mp*

Perc. *mp* *p* *mf*

91 3'50"

Tpt. *p* *mf* *mp* *f*

Vln. *f*

Vc.

Perc.

99 4'05" 3'00" 4'15"

Tpt. *mp* *mf* *mp* *f* *mf* *p* *mf* *f*

Vln. *mp* *f* *mp* *mf* *f* *mf*

Vc. *ff* *mf* *p*

Perc. *mf* *mp* *mf* *mp* *mf*

To Mar.

107 Straight mute 4'35"

Tpt. *p* *pp* *p*

Vln. *mp* *pp* *pp*

Vc. *arco* *Sul D* *pp* *pp*

Perc. *p* *pp* *pp* *mp*

Marimba soft mallets

115 $\text{♩} = 92$ 4'50" $\text{♩} = 72$ 5'05"

Tpt. *mp* *pp* *pp* *ppp*

Vln. *Sul pont.* *ppp* *ord.*

Vc. *Sul D* *pp* *Sul pont.* *p* *ord.*

Mar. *pp* *p* *pp* *p* *pp*

Gong hard beater, very soft

Transposed score

Lydbølgeskulp

Ensemble I

III. Til

♩ = 60

0'20"

Trumpet in B♭

Violin

Violoncello

Marimba soft mallets

Percussion

mf *mp* *p* *mp* *mf* *p* *mf*

mp *mp* *mf*

mp *mp* *mf*

mp *mp* *mf*

9

0'55"

Tpt.

Vln.

Vc.

Perc.

p *mf* *f* *mp* *pp* *p*

mp *mf* *pp*

mp *mp* *mf*

To Chim. Chimes (rub triangle stick on chimes in irregular tremolo)

pp

19

1'15"

Tpt.

Vln.

Vc.

Marimba soft mallets

Perc.

mp *mf* *p* *mf*

mf *p*

mp

23 1'35"

Tpt. *p* *mp* *p*

Vln.

Vc.

Perc.

26 1'45" cup mute

Tpt. *mp* 3

Vln. *mp*

Vc. *mp* 3

Perc. *mf*

29 2'00"

Tpt. *mp* *mf* 3

Vln. *mp* *mf* 3

Vc. *mf* 3

Perc.

32

Tpt. *mp*

Vln.

Vc. *mp* *p*

Perc.

35

Tpt. *mf* *mp*

Vln. *p*

Vc. *f* *mf* *p*

Perc. To W.B. Wood Block *pp*

2'20"

40

Tpt. *mf* *p* *p* *pp*

Vln. *mp* *p* *mp* *p* *mp* *mp* *mf* *mp*

Vc. *mp* *mp* *p* *pizz.* *mp* *mf* *arco*

Perc. *mp* *pp*

flap

open 2'40"

$\text{♩} = 86$

47 3'00"

Tpt. *mp* flap

Vln. *mp* *mf* *mp* *p* *mp* Sul tasto *8va*

Vc. *mp* Sul tasto

Perc. Glockenspiel triangle sticks *p* Anvil Gl.sp. Anvil Gl.sp. Anvil *pp*

53 3'25"

Tpt. *p* *mp* *p*

Vln. *p* *mp* *p* ord. Sul E

Vc. *mp* ord.

Perc. Glockenspiel *p* *pp* triangle sticks *p* Anvil *pp*

59 Straight mute 3'45"

Tpt. *p*

Vln. *mp* *pp* *8va*

Vc. *mp* *pp* Sul A

Perc. *mp* *pp* Glockenspiel triangle sticks *pp*

64

open

open 4'00"

Tpt.

Vln.

Vc.

Perc.

pp

pp

pp

To Anv.

Anvil
hard mallets

mf

p



Lydbølgeskulp

Ensemble I

IV. Fiskeskjær

♩ = 78

cup mute 0'15"

Trumpet in Bb

Violin

Violoncello

Gong arco

Percussion

Triangles

To W.B.

pp, *mf*, *p*, *mp*, *pp*, *mf*, *mp*, *p*

11 0'30"

Tpt.

Vln.

Vc.

Wood Block hard mallets

Triangles

To W.B.

Wood Block soft mallets

pp, *mf*, *mp*, *p*, *mf*, *pp*, *mf*

19 0'45"

Tpt.

Vln.

Vc.

Triangles

To Triangles.

pp, *mf*, *p*, *mp*, *p*, *mf*, *pp*, *mf*

♩ = 86

28 1'05" flap ord. 1'20" open

Tpt. *pp* *mp* *mf* *pp* *pp* *mf*³

Vln. *p* *pp* *p* *pp* *mp*³ Sul D *pp* *mf*³ (sul pont.)

Vc. *p* *pp* *p* *mp* *mp* *mp*

Perc. *p* *mf* *mp*³ *p* *mp* *mp*

To Gong
Gong triangle sticks
To Glock.
Glockenspiel hard mallets

39 1'35" flutter-tongue

Tpt. *p* *ppp* *mp* *mp* *p* *mf*³

Vln. *p* *p* *mp* *mp* *pp* *mf*

Vc. *mf* *mp* *p* *mp* *pp* *mf*

Perc. *mp* *p* *mp* *p*

46 1'45" sim. ord. sim.

Tpt. *f* *pp* *p* *pp* *p*

Vln. *ff* *mp*³ sul pont. *mf*³ *p*

Vc. *ff* *mp* *pp* *mp* *p*

Perc. Triangles *f* *mf* *mp*³ *mp*³ *To W.B.*

♩ = 60
2'10"

54 ord. sim. ord.

Tpt. *mp* *mf* *ff* *pp* *p* *mp*

Vln. *mf* *ff* *mp* *mf* *p* *mp*

Vc. *pp* *mf* *ff* *mf* *p* *mp*

Perc. Wood Block medium mallets *mf* *mp* *p* *mf* *f* Marimba

Sul tasto

8^{va}

♩ = 102
2'45"

63

Tpt. *mp* *mf* *ff* *f*

Vln. ord. *mf* *ff* *ff*

Vc. ord. *p* *pp* *mf* *ff*

Perc. medium mallets *mp* *p* *pp* *mf* *f*

8^{va}

70

Tpt.

Vln.

Vc. *ff*

Perc. *ff*

75 2'55"

Tpt. *mf*

Vln. *f*

Vc. *f*

Perc. *f*

80 3'05"

Tpt. *mp* *f*

Vln. *mp* *f*

Vc. *mp* *f*

Perc. *mp* *f*

85 3'20"

Tpt. *mp* *f*

Vln. *mp* *f*

Vc. *mp* *f*

Perc. *mp*

90

Tpt. *p* *f*

Vln. *mp* *ff*

Vc. *mp* *ff*

Perc. *mp* *f* *ff* *mf*

95 3'30"

Tpt. *mf* *f* *fff* *mp*

Vln. *mf* *fff* *arco* *mf*

Vc. *fff* *arco* *mf*

Perc. *f* *mp* *fff* *p*

pizz *arco*

101 fluttertongue 3'45" ord.

Tpt. *p* *mp*

Vln. *p* *mf*³

Vc. *p*

Perc.

106 3'55"

Tpt. *p* *mf* *mp*

Vln. *p* *f* *mf*

Vc. *f* *mf*

Perc. *f* *mf* To triangles

117 4'10" cup mute 4'20"

Tpt. *p* *mf* *mp*

Vln. *p* *mf* *mp* *p* *mf* *p* Sul G

Vc. *mp* *mf* *p* *mf* *p* *f*

Perc. Triangles *ppp*

128 4'40"

Tpt. *mp* *pp* *mp* *mf* *mp* *mf*

Vln. *f* *mf* *mp* *p* *mf* *mp* *f* *mf* *f* Sul G

Vc. *f* *mf* *mp* *p* *mf* *mp* *f* *mf* *f*

Perc. Marimba *mp* *mf*

140 4'50" 5'05"

Tpt. *mp* *mf* *mp* Sul A sul tasto

Vln. *mf* *mp* *mf* *mp* Sul A sul tasto

Vc. *mf* *mp* *mf* *mp*

Perc. 4'50" *mp* *p* *mp* *p*

151 5'20" 5'30"

Tpt. *p* *f* *mf* *p*

Vln. *p* ord. *f* *mf* sul tasto *p*

Vc. *p* ord. *f* *mf* sul tasto *p*

Perc. *pp* *mf* *mp* *pp*

Ensemble II



Lydbølgeskulp

Ensemble II

I. Ro 1

Arnt Håkon Ånesen (2016)

♩ = 106
Bass Flute
fl. tongue

0'15"

Flute

mf *f* *mf* *p*

Bass Trombone
straight mute

pp *mf* *mp* *pp* *ppp*

Viola

Sul A
Sul pont.

mp

8

To Picc. 0'30"

Fl.

mf *f* *ff* *mp* *ff*

Tbn.

mp *mf* *f* *mf* *pp* *fff* *pp* *pp*

Vla.

mp *mf* ord.

16 Piccolo ord.

0'50"

Fl.

mf *mp* *f* *mp* *f* *mp*

Tbn.

f *p* *mf* *pp* *mp* *open* *mp* *ppp*

Vla.

p *mf* *p* *mf* *ord.* *mp* *ppp*

Sul tasto

26

Fl. *mp*

Tbn.

Vla. *mf*

1'15"

35

Fl. *mp* *mf* *mp*

Tbn. straight mute *mf* *f* *mp* *mf* *f*

Vla.

To Fl. 1'30"

To Tbn. open.

$\text{♩} = 102$

42

Fl. *mf* *mp*

Tbn.

Vla. *mf*

Flute

1'45"

49

Fl. *mf*

Tbn.

Vla. *mp* *mf*

2'00"

53

Fl. *mp* *p* *mf*

Tbn. Trombone

Vla. *mp* *p* *mf*

♩ = 68

2'20"

57

Fl. *mf* *mp* *mf* *p* *mf*

Tbn. *mf* *mp* *mf* *p* *mp*

Vla. *p* *mf* *f* *mp* *mf*

To A. Fl. Alto Flute

flutter tongue

63

Fl. *mf* *f*

Tbn. *mf*

Vla. *f*

67

Fl. *f* *mp* *f*

Tbn. *mf* *p* *mf* *mp* *pp*

Vla. *mf* *p* *f* *mf* *pp*

To Picc.

72 Piccolo 3'05" 3'20" To B. Fl. To B. Tbn.

Fl. *mf* *f* *mf* *p*

Tbn. *f* *p* *p*

Vla. *ff* *mf* *p*

80 Bass Trombone cup mute 3'35" Bass Flute 3'45" Sul tasto

Fl. *mp* *f* *mp*

Tbn. *p* *mf* *mp* *f* *mp*

Vla. *mp* *f* *mf*

90 4'20"

Fl. *f* *mp* *pp* *mf* *p* *mp*

Tbn. *f* *mp* *pp* *mf* *p*

Vla. *f* *mp* *pp* *mf* *p* *mp*

98 5'05"

Fl. *mp* *pp* *p* *mf* *pp* *mf* *mp*

Tbn. *mf* *p* *mf* *mf* *pp*

Vla. *mp* *pp* *p* *mf* *pp* *mf*

Lydbølgeskulpt

Ensemble II

II. Ro 2

♩ = 66

Piccolo

Flute

Trombone straight mute

Viola

with pressure

pp

mp

mf

mp

mf

mp

mf

mp

6 0'15"

Fl.

Tbn.

Vla.

mf

mp

mp

mf

10 0'35"

Fl.

Tbn.

Vla.

p

mp

mf

p

3 3 fp

ord. Sul tasto

mp

3 3 3 3 3 3 p

14 0'50"

Fl.

Tbn.

Vla.

mp

mp

mf

mp

mf

mp

p

ord. with pressure

3 3 3 3 3 3 p

mp

f

mp

mf

mp

p

To Fl.

20 Flute 1'10" $\text{♩} = 56$

Fl. *mp* *mf* *mp* *mf* *mp* *mf*

Tbn. cup mute *p*

Vla. ord. *p* *mp* *p* *mp* *p* *mp*

25 1'35"

Fl. *mp* *mp* *mf* *mp* *mf* *mp* *mf*

Tbn. *p* *p* *p*

Vla. pizz *mf* arco *p* *mp* *p* *mp* *p* *mp*

32 2'10"

Fl. *mp* *mf* *mp* *mf*

Tbn. *p*

Vla. *p* *mp* Sul G *pp* *mp* *pp* *p* *mp*

41 2'30"

Fl. *mp* *mf* *mp* *mf* *mp* *mf*

Tbn. *p* *p* *p*

Vla. *p* *mp* *p* *mp* *p* *mp* *mf* pizz *f*

Fl. 48 $\text{♩} = 68$ 2'45" *mp* 5 *mf* *f* 3

Tbn. To B. Tbn.

Vla. *p* arco 6 *mp* *f* 3 with pressure

Fl. 56 $\text{♩} = 60$ 3'20" *f* Bass Trombone $\text{♩} = 72$ 3 open

Tbn. Bass Trombone open

Vla. *f* 3 with pressure *mf* 3 *f* 3

Fl. 64 3'40" $\text{♩} = 60$ *mf* 3

Tbn. open *mf* *f* 3 *mf* 3

Vla. 3 *f* 3 *mf* 3

Fl. 72 3'55" 4'10" To Picc. *mf* 3

Tbn. *mp* *f* 3 *mf* 3

Vla. 3 *mp* *f* 3 *mf* 3

81 $\text{♩} = 56$ 4'15" Piccolo

Fl. *mf* *mp* *mf*

Tbn. To Tbn. Trombone

Vla. with pressure *mf* *mp* *f* *mp* *mf*

91 4'40"

Fl. *p* *mp* *mf* *p*

Tbn. cup mute *pp* *pp* *pp*

Vla. *f* *mp* *mf* *mp* Sul tasto ord. *pp*

98 4'55" 5'05"

Fl. *fp* *mp*

Tbn. *pp* open

Vla. *pp* ord.

Lydbølgeskulpt

Ensemble II

III. Til

♩ = 88

0'10" 0'25"

Flute Bass Flute

Trombone cup mute

Viola sul pont. ord. sul pont.

mp *mf* *p* *mf* *mp* *mf*

12 0'40" flutter tongue To Picc.

Fl. *mp* *mp* *mp* *p* *pp*

Tbn. *mp* *mp* *mp* *p* *pp*

Vla. ord. pizz *mp* *p* *mf* *mp* *mp* *p* *mp*

open *mp* *mp* *p* *pp*

sul pont. ord. sul pont. ord.

♩ = 84 1'00"

Fl. ord. Piccolo *mp* *mf*

Tbn.

Vla. Sul G *ff* *mf*

27 1'20"

Fl. *pp*

Tbn.

Vla. *pp*

31

Fl. *mf* *mp* *p* 1'35"

Tbn. cup mute *p* *pp* *mf*

Vla. *mf* *mp* *p*

36

Fl. *pp* *mf* *p* *mp* *pp* *mf* 1'55"

Tbn. open *p* *mf* *pp*

Vla. *pp* *mf* *p* *mp* *pp* *mf*

44

Fl. *p* *p* *p* 2'05" 3'40"

Tbn.

Vla. Sul A *p* *p* *p*

59

Fl. *p* *pp* 3'05"

Tbn.

Vla. *mp* *p*

71

3'25"
flutter
tongue

ord.

4'00"

Fl.

Tbn.

Vla.

pp

p



Lydbølgeskulp

Transposed score

Ensemble II

IV. Fiskeskjær

♩ = 76

Flute
Bass Flute

Trombone
cup mute

Viola
sul tasto

8 0'30"

15 1'00"

22 1'20"

Fl.

Tbn.

Vla.

ord.

Sul A

This music is copyright protected

30 1'55"

Fl. *mf* *mp* *p* *mf* *mp* *mf* *mp*

Tbn. *mp* *mp* cup mute

Vla. *mp* *mp* *p* *mp* *mp* *mp*

sul tasto

42 2'35" To Picc.

Fl. *mp* *pp* *mf* *mp* *mp*

Tbn. *mp* *mp* *mp* *mp* *pp*

Vla. *mp* *p* *mp* *mp*

ord.

♩ = 98 2'50"

55 Piccolo

Fl. *mf*

Tbn. To B. Tbn. Bass Trombone open *mf*

Vla. *mf*

59 3'05"

Fl.

Tbn.

Vla.

63 3'15"

Fl. Tbn. Vla.

This system contains measures 63 to 66. The Flute part has a melodic line with eighth notes and rests. The Trombone part has a simple accompaniment of quarter notes. The Viola part has a complex rhythmic accompaniment with sixteenth and thirty-second notes. A rehearsal mark '3'15"' is placed above the second measure.

67 3'25"

Fl. Tbn. Vla.

This system contains measures 67 to 70. The Flute part continues its melodic line. The Trombone part has a simple accompaniment. The Viola part continues its complex rhythmic accompaniment. A rehearsal mark '3'25"' is placed above the second measure.

71 3'35"

Fl. Tbn. Vla.

f *mf*

This system contains measures 71 to 73. The Flute part has a melodic line with dynamics *f* and *mf*. The Trombone part has a simple accompaniment with dynamics *f* and *mf*. The Viola part continues its complex rhythmic accompaniment with dynamics *f* and *mf*. A rehearsal mark '3'35"' is placed above the second measure.

74 3'45"

Fl. Tbn. Vla.

mf

This system contains measures 74 to 76. The Flute part has a melodic line with dynamics *mf*. The Trombone part has a simple accompaniment. The Viola part continues its complex rhythmic accompaniment with dynamics *mf*. A rehearsal mark '3'45"' is placed above the second measure.

79

To B. Fl.

3'55"

Bass Flute

Fl. *mf*

To Tbn.

Trombone straight mute

Tbn. *pp* *ppp p* *pp*

Vla. *p* *p* *mp* *p*

sul tasto

89

4'15"

Fl. *mf* *f*

Tbn. *pp* *ppp*

Vla. *mp* *pp* *mf* *pp*

94

To A. Fl.

Alto Flute

Fl. *ppp* *mf* *pp* *p*

Tbn. straight mute *pp*

Vla. ord. Sul A *p*

101

4'35"

Fl. *p* *mp* *p* *pp*

Tbn. *p* *pp* *ppp*

Vla. (Sul A) *mp* *p* *pp*

109 4'55" 5'15" 5'30"

Fl.

Tbn.

Vla.



Ensemble III



Transposed score

Lydbølgeskvalp

Ensemble III

I. Ro 1

Arnt Håkon Ånesen (2016)

♩ = 102

Oboe

Clarinet

Electric Guitar

Clarinet in B \flat

To B. Cl.

flutter tongue 0'20"

mp

p

p

mp

mf

p

10

ord.

0'30"

Ob.

Bass Clarinet in B \flat

Cl.

E. Gtr.

fp

mp

fp

mp

mf

mp

mf

mp

p

p

pp

mf

p

mf

mp

p

17

0'45"

Ob.

Clarinet in B \flat

Cl.

E. Gtr.

mf

mf

p

p

mp

mp

mf p

f

mf

mp

p

25 flutter tongue 1'05" ord.

Ob. *p* *pp* *p* *p* *3*

Cl. *p* *pp* *mp* *mp*

E. Gtr. *pp* *p* *mp* *mp* *p*

33 1'20" ♩ = 88

Ob. *p* *3* *3* *p* *mp* *mp* *ppp*

Cl. *p* *mp* *mp* *ppp*

E. Gtr. *mp* *mf* *mp* *p*

41 1'35" 1'50"

Ob. *f* *ff* *f*

Cl. *ff* *f*

E. Gtr. *mf* *mp* *f* *mf* *mp* *f* *f*

48 2'10" dampen

Ob. *f* *ff* *f* *fff* *f* *ff*

Cl. *mf* *ff* *fff* *f* *ff*

E. Gtr. *mf* *f* *ff*

55

Ob. *mf*

Cl. *mf*

E. Gtr. *mf*

59

Ob. *mp* 2'30" *mf* 2'40" *mp*

Cl. *mp* *mf* *mp*

E. Gtr. *mp* *mp*

68

Ob. *mf* *p* *pp* flutter tongue

Cl. *mf* *p* *pp* flutter tongue

E. Gtr. *mf* *p* *mf* *mp* *f*

♩ = 112

3'00"

77

Ob. *p* *mp* *mf* *p* 3'25"

Cl. *p* *mp* *mf* *p*

E. Gtr. *p* *mp* *mf* *p* *p*

86 3'35" 3'50"

Ob. *mf*

Cl. *mf*

E. Gtr. *mp* *mf* *p* *mf* *pp* *mf* *p* *pp* *mp* *mf*

95 4'00"

Ob. *p* *mp*³ *pp* *mf*³ *p* *mf*³

Cl. *p* *mp* *pp* *mf* *p* *mf*

E. Gtr. *mf* *mp* *mp* *pp* *mp* *pp* *mf* *p* *mf*

102 4'10"

Ob. *p* *mp* *pp* *mf* *p* *mf* *p* *mf* *mf*³

Cl. *mf* *mp* *pp* *mf* *p* *mf* *p* *mf*

E. Gtr. *p* *mp* *pp* *mf* *p* *mf* *p* *mf*

109 flutter tongue 4'25" ord.

Ob. *p* *mf* *mp* *mp*

Cl. *p* *mf* *mp* *mf* *ord.* *mp*

E. Gtr. *mf* *mp* *mf* *mp* *ord.* *mp* *p*

119

4'45"

flutter tongue

5'05"

Ob.

Cl.

E. Gtr.

To B. Cl.

Bass Clarinet in B \flat

ord.

ord.

mp *p*

mf *p*

mf

mp *p* *mf* *p* *mp*

fp *mp* *p* *mp*



Lydbølgeskulpt

Ensemble III

II. Ro 2

Transposed score

♩ = 66

0' 30"

Oboe

Clarinet

Electric Guitar

Bass Clarinet in B \flat

12

0' 50"

Ob.

Cl.

E. Gtr.

19

1' 00"

Ob.

Cl.

E. Gtr.

24

1' 10"

1' 25"

Ob.

Cl.

E. Gtr.

33 1'55"

Ob.

Cl. (slap) *mf* 3

E. Gtr. *mp* 3

44 $\text{♩} = 60$ 2'15"

Ob. *mf* 6 *f* 3 *mf* 3 *f* *mf*

Cl. *mp* 3

E. Gtr. *f* 3 *mp* 3

50 2'30"

Ob. *f* 3 *mf* 3 *f* *mf*

Cl. To Cl. 3

E. Gtr. *mf* 3 *mp* 3

58 $\text{♩} = 56$ 2'45"

Ob. *mf* 3 *mp* 3 *mf* 3 *f*

Cl. Clarinet in B \flat ord. 3 *mf* 3 *f* *mf*

E. Gtr. *mf* 3 *mp* 3 *mp*

Ob. *mf* *f* *mf* *f* *mp*

Cl. *f* *mf* *f* *mf* *f* *mp*

E. Gtr.

Ob. *p* *ff* *mf* *f*

Cl. *ff*

E. Gtr.

3'10" 3'30"

Ob. *mf* *f* *mf* *f* *mp*

Cl. *mf* *f* *mf* *mf* *f* *mf*

E. Gtr.

2'25"

Ob. *mp* *f* *mf* *mp* *f*

Cl. *f* *mf* *mp* *f*

E. Gtr.

76 2'40" 3'55"

To B. Cl.

$\text{♩} = 98$

♩ = 72
84 4'00"

Ob. *mf* *f* *mf* *f* *f* *mf*

Cl. *f* *mf* *f* *mf* *f*

E. Gtr.

♩ = 66
88 4'20"

Ob. *f* *mf* *f* *mp* *mf* *mp* *mf* flutter tongue

Cl. *mf* *f* *mf* *mf* *mp* *mf* *mp* *p* flutter tongue

E. Gtr. *p* *mp* *p* *mp*

96 ord. 4'40" 4'50" 72

Ob. *mp* *mf* *mf* *f* *mf*

Cl. *pp* *mp* To B. Cl. Bass Clarinet in B♭ slap

E. Gtr. *mp* *mf* *mp*

103 5'05"

Ob. *f* *mf* *f* *mp* *f*

Cl. *mf* *mp* ord.

E. Gtr. *p* *mf*

Lydbølgeskvulp

Ensemble III

III. Til

♩ = 98

0'15"

Oboc

Clarinet

Electric Guitar

12

Ob.

Cl.

E. Gtr.

0'30"

Clarinet in B \flat

19

Ob.

Cl.

E. Gtr.

0'45"

26

Ob.

Cl.

E. Gtr.

0'55"

32 1'05" 1'15"

Ob. *pp* *fp* *fp* *fp* *fp* *fp* *fp* *mp* *fp* *fp* *fp* *fp*

Cl. *pp* *fp* *fp* *fp* *fp* *fp* *fp* *mp* *fp* *fp* *fp* *fp*

E. Gtr. *mf* *mp* *p* *mf* *f* *pp*

45 1'30" 1'35" $\text{♩} = 72$

Ob. *fp* *mp* *fp* *fp* *fp* *fp* *fp* *mp* *f* *fp* *fp* *fp* *fp* *fp* *fp*

Cl. *fp* *mp* *fp* *fp* *fp* *fp* *fp* *mp* *f* *fp* *fp* *fp* *fp* *fp* *fp*

E. Gtr. *mf* *p* *mf* *p* *mp* *mf* *p* *mf* *p* *mf*

60 1'50" 2'05"

Ob. *mp* *fp* *fp* *fp* *fp* *fp* *fp* *fp* *fp* *fp* *fp* *mp* *pp* *mf* *p*

Cl. *mp* *fp* *fp* *fp* *fp* *fp* *fp* *fp* *fp* *fp* *fp* *mp* *pp* *mf*

E. Gtr. *p* *mp* *mf* *fp* *fp*

Bass Clarinet in B \flat

78 2'20"

Ob. *pp* *mf* *pp* *mf* *p* *mp* *p* *mf*

Cl. *p* *pp* *mf* *p* *mp* *p* *mp*

E. Gtr.

♩ = 60
flutter tongue
2'50" ord.

92 2'40"

Ob. *p* *mf*

Cl. *mf* *p* *mp* *p* *mf* To Cl. Clarinet in B \flat

E. Gtr. *pp* *mf*

flutter tongue
104 3'05"

Ob. *mf* *p*

Cl. *mf* *mp* *fp* *mp* flutter tongue ord.

E. Gtr. *mp*

111 3'30" sim. ord. 4'00"

Ob. *mf* *mp* *fp* *p*

Cl. *fp* *mf* *mp* *fp* *mf* ord.

E. Gtr.

Lydbølgeskulp

Transposed score

Ensemble III

IV. Fiskeskjær

♩ = 60

Oboe

mf p 3 5 p pp mf flutter tongue ord.

Bass Clarinet in B \flat

mf p pp mf

Electric Guitar

mf p mf p mp

9

Ob.

mp mf 0'35" mf mp p flutter tongue 0'55" ord.

Cl.

f mf mp mf p f mp flutter tongue ord.

E. Gtr.

mp mf mf mp

21

Ob.

mp p mp flutter tongue 1'30" mf mf p

Cl.

p mp mf p flutter tongue To Cl. Clarinet in B \flat ord.

E. Gtr.

p pp mf mf p

36 1'55" 2'15"

Ob. *mf* > *mf* > *pp* > *p*

Cl. *mf* > *mf* > *pp* > *p* — *pp*

E. Gtr. *mf* > *mf* *pp* > *pp* *mf*

8va

50 2'40"

Ob. *mp* *mp*

Cl. *mp* — *p* *mf* — *p*

E. Gtr. *p* *pp* *mf*

63 3'10" 3'25"

Ob. *ff* *f* *ff* *fff*

Cl. *ff* *f* *mf* *ff* *fff*

E. Gtr. *ff* *f* *mf* dampen

70 3'35"

Ob. *f* *ff*

Cl. *f* *ff* slap *mf*

E. Gtr. *f* *ff* dampen

75 $\text{♩} = 92$ 3'55"

Ob. *mf*

Cl.

E. Gtr.

85 $\text{♩} = 108$ 4'10" $\text{♩} = 52$

Ob. *mp*

Cl. ord. *mf* *p*

E. Gtr. *f* *mf* *mp* *f* *mf*

94 4'30" flutter tonge $\text{♩} = 74$ 4'45" ord

Ob. flutter tonge *mp*

Cl. flutter tonge *mp* *f* ord. *f*

E. Gtr. *mf*

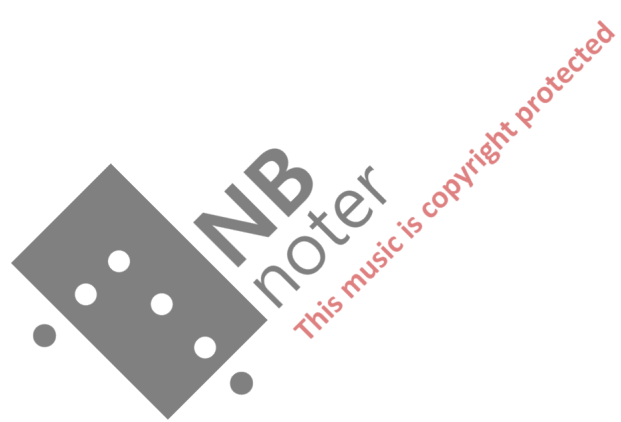
102 5'10" 5'30"

Ob. *mf*

Cl. *mf*

E. Gtr.

Ensemble IV



Transposed score

Lydbølgeskulpt

Ensemble IV

I. Ro 1

Arnt Håkon Ånesen (2016)

♩ = 96 flutter tongue ord. sim. sim. ord.

Bassoon *mf* *f* *pp* *mp* *f*

Accordion *f* *f* *mf* *f* *mp*

Contrabass *mf* *f* *p* *f* *p* *f* *mp*

7 sim 0'25"

Bsn. *mp* *f*

Accord. *mf* *f*

Cb. *f* *p*

19 0'50" ord. sim. 1'00" sim.

Bsn. *mf* *p* *mp*

Accord. *mf* *p* *mf* *p* *ff* *pp* *mf* *p*

Cb. *mf* *p* *f* *ppp* *p* *ff* *mp* *mf*

Sul D

29 ord. 1'25"

Bsn. *ff* *mf*

Accord. *mp* *mf < f* *mp < ff* *pp* *ff* *mf*

Cb. *ff* *mf*

41 1'55"

Bsn.

Accord. *mp*

Cb. *p < mf* *pp*

sul tasto

50 2'10"

Bsn. *mf* *mp* *f* *mp* *ppp*

Accord. *f* *mp*

Cb. *mf* *mp* *f* *mp* *ppp*

54

Bsn. *mp* *f* *p* 2'20" 3

Accord. *ff* *mf*

Cb. *mp* *f* *p* 3

58 flutter tongue ord. 2'30" 3

Bsn. *mf* *f*

Accord. *f*

Cb. *pp* *mf* *f* 3

62 sim. ord. 3

Bsn. *ff*

Accord. *ff*

Cb. *ff* *mf* 3

2'45" 3'00"

67 *sim.* 3 ord. *f* *ff*

Bsn.

ord. *8va* *mf* *p* *ff* *mf*

Accord. *Bellow shake* *f* *ff*

Cb. *f* *ff* *mf* *p* *mf* *f*

75 3'30"

Bsn. *mp* *pp* *mf*

Accord. *mp* *mf* *pp* *f*

Cb. *mp* *mf* *pp* *f* *f* *mp* *Sul tasto* *mp* *pp* *mf*

86 3'45"

Bsn. *p* *mf* *ff* *mf* *mf* *mp* *mf*

Accord. *p* *mf* *ff* *mf* *mf* *mp* *mf*

Cb. *p* *mf* *ff* *Sul tasto* *mf* *mf* *mp* *mf*

97 4'10" pizz

Bsn. *mp* *mf* *fp*

Accord. *>mp* *mp* *pp* *mf* *p*

Cb. *>mp* *ppp* *ff* *p* *ord.* *pizz* *mf* *p*

106 4'25" flutter tongue

Bsn. *mf* *p* *ff*

Accord. *mf* *ff* *mf*³ *mf*³

Cb. *mp* *f* *arco* *ff*

113 4'45" ord. 5'05"

Bsn. *p* *f* *pp* *fp* *mp* *fp* *mp*

Accord. *mp* *mf* *>mp*

Cb. *p* *f* *pp* *fp* *mp* *fp* *mp* *sul tasto* *ord.*

Transposed score

Lydbølgeskvulp

Ensemble IV

II. Ro 2

♩ = 52

0'25"

0'45"

Bassoon

Accordion

Contrabass

mp *mp* *f*

mp *mp* *f*

mp *mp* *f*

Sul E

16

1'00"

1'15"

Bsn.

Accord.

Cb.

mp *mf* *mp* *ff mp* *f mp* *mp*

mp *mf* *mp* *ff mp* *f mp* *mp*

mp *mf* *mp* *ff mp* *f mp* *mp*

Sul G

Sul D

27 1'30"

1'50"

2'05"

Bsn.

Accord.

Cb.

pp *< f* *mp* *mp* *f* *mp* *f* *mp* *p < f* *p < f*

pp *< f* *mp* *mp* *f* *mp* *f* *mp* *p < f* *p < f*

pp *< f* *mp* *mp* *f* *mp* *f* *mp* *p < f* *p < f*

Sul D

♩ = 100
2'40"

39 2'15" 2'30" 2'40"

Bsn.

Accord.

Cb.

f *p* *f* *> p*

f *p* *f* *> p*

f *p* *f* *> p*

52 2'50"

Bsn.

Accord.

Cb.

p *mp*

p *mf* *p* *mp*

p *mp*

Sul tasto

57 *mf*

Bsn.

Accord.

Cb.

p *mf*

mf *mp* *mf* *mp* *mf* *p*

p *mf*

62 3'05" 3'15"

Bsn.

Accord.

Cb.

p *mp*

p

72

Bsn. *mf* *p* *pp*

Accord. *mf* *mp*

Cb. *mf* *p* *pp*

77 3'30"

Bsn. *mf* *mp* *mf* *pp*

Accord. *f*

Cb. *mf* *mp* *mf* *pp*

♩ = 68

84 3'45"

Bsn. *mp* *pp* *mp* *p* *mp*

Accord. *p* *mp* *p* *mf* *p*

Cb. *p* *p* *p*

92 4'10" 4'20"

Bsn. *p mp pp mp mp*

Accord. *mp p mf pp mp mp*

Cb. *mp pp ord. Sul A mp mp*

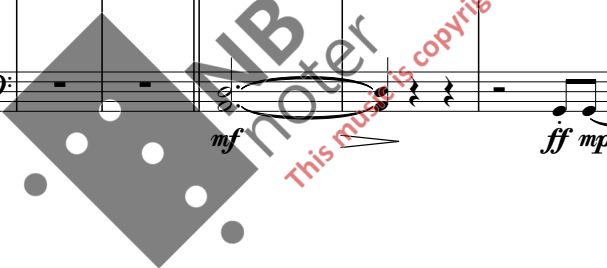
103 4'35" 4'45" 5'05"

Bsn. *f mf ff mp f mp*

Accord. *f mf ff mp f mp*

Cb. *f mf ff mp f mp*

Sul G



Lydbølgeskulp

Ensemble IV

III. Til

♩ = 100

0'15" 0'25" 0'30"

Bassoon

mp mf mp p mf mp p

Accordion

mp mf mp p mf mp p

Contrabass

mp mf mp p mf mp p

18 0'35" 0'50"

Bsn.

mf p mp mf p

Accord.

mf p mp mf p

Cb.

mf p mp mf p

♩ = 92

34 1'00"

Bsn.

Accord.

mp

Cb.

sul G p ppp

♩ = 112

40 1'15"

Bsn.

Accord.

Cb.

p

mp

p

mp

Sul tasto

mp

mf

47 1'30"

Bsn.

Accord.

Cb.

pp

pp

ord.

pp

62 2'05"

Bsn.

Accord.

Cb.

pp

sul G

pp

ppp

79 2'20" 2'30"

Bsn.

Accord.

Cb.

pp *ppp* *p* *pp* *pp* *ppp* *pp* *ppp*

93 2'45"

Bsn.

Accord.

Cb.

mp *pp* *ppp*

111 ♩ = 96 3'20" 3'30"

Bsn.

Accord.

Cb.

mf *p* *mf* *p* *mf* *pp* *mf* *p* *mf*

Sul pont. with pressure

ord.

Sul pont. with pressure

mf *mp < mf*

126

Bsn.

mf p mp p mp p mp

Accord.

mf mp mf mp mf mp

Cb.

ord. pp mp p mf pp p pp mf

Sul pont. with pressure

Sul pont. with pressure

132 3'45" 3'55" 4'00"

Bsn.

Accord.

Cb.

mf mf p mp p pp

ord. Sul pont. with pressure ord.

19 0'35" flutter tongue 0'50" ord.

Bsn. *mf* > *pp* *fp* < *ff* *p* *ff*

Accord. *f* > *pp* *ff* 5 *pp* < *mf* *p*

Cb. *mf* > *pp* *fp* *fp* < *ff* *p* sul.p. *mf* > *ff*

32 1'10"

Bsn.

Accord. *mp* *p* *f* *p* *mf*

Cb. Sul G *pp* *mf* *pp* Sul G Sul *mf*
tasto
Sul D

44 1'15" 1'25"

Bsn. *mp* *mp*

Accord. *mf* *mf* *mf*

Cb. Sul A *mf* Sul G *mf* ord. *mp*

55 1'40" 1'45"

Bsn. *p* *ff* *pp* *mp*

Accord. *mp* *p* *mf*

Cb. *mp* *pp* *mf* *pp* *mp*

Sul tasto
Sul G
8^{va}
Sul G
ord.

65 1'55"

Bsn. *mp* *mp* *mf*

Accord. *mf* *mf* *f*

Cb. *mp* *mp* *mf*

ord.
Sul tasto

76 2'05" 2'15" 2'20"

Bsn. *pp* *p* *p*

Accord. *p* *p* *p*

Cb. *pp* *p* *p*

ord.
pizz

89 2'30" flutter tongue ord.

Bsn. *f* *mp* *mf* *pp* *mp*

Accord. *f* *mp* *mf* *p*

Cb. *f* *mp* *mf* *p* *mf* *p* *mp*

arco
8^{va}
3
3

95 *sim.* *ord.* 2'50" *sim.* *ord.*

Bsn. *mp* *mf* *mp* *mf*

Accord. *mp* *mp*

Cb. *p* *mp* *p* *mf*

101 *sim.* *ord.* 3'10" *sim.*

Bsn. *mp* *mf* *mp*

Accord. *pp* *mf* *p* *mp* *mf* *mp*

Cb. *p* *mp* *mf* *mp*

111 *ord.* 3'35"

Bsn. *mf*

Accord. *mf*

Cb. *mf* *p* *mp*

121 3'50"

Bsn.

Accord. *f*

Cb. *mf*

129 4'05"

Bsn.

Accord.

Cb.

137 4'15" 4'35"

Bsn.

Accord.

Cb.

Sul A

151 4'45" 5'00"

Bsn.

Accord.

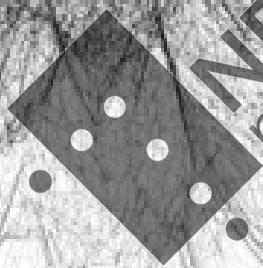
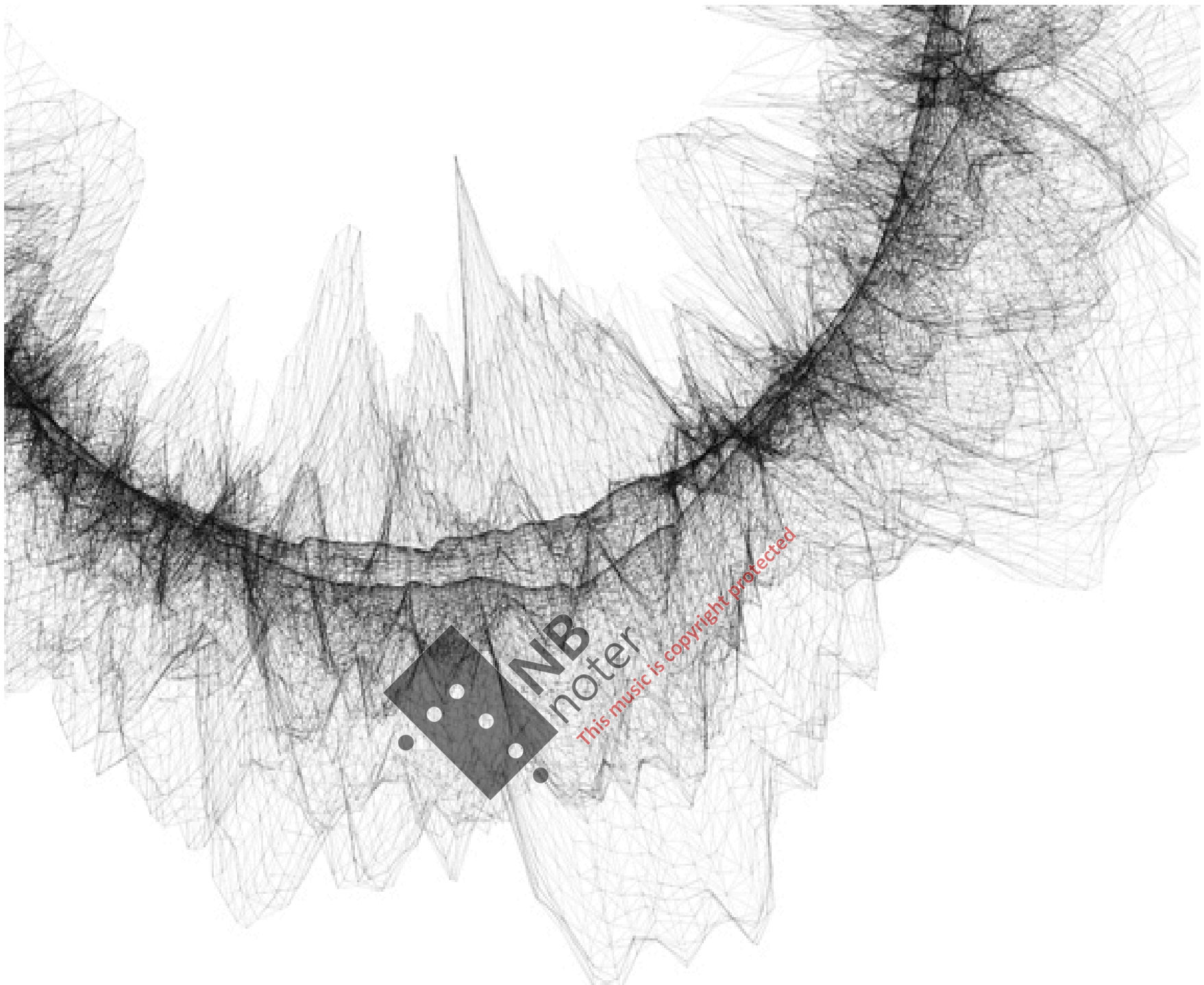
Cb.

162 5'15" 5'30"

Bsn.

Accord.

Cb.



NB
noter

This music is copyright protected