

MAGNAR ÅM:

INTERMEZZO FOR TRE BLÅSEINSTRUMENT.

KLARINETT, KORNETT OG EUPHONIUM („BARITON“)

INTERMEZZO FOR THREE WIND INSTRUMENTS.

CLARINET, CORNET AND EUPHONIUM.

OBS: VARIANT FOR FLØYTE, KLARINETT OG BARITONHORN (TENOR) SIDE 7.
ALTERNATIVE FOR FLUTE, CLARINET AND BARYTONHORN PAGE 7.

VERKET ER TINGA AV KULTURSTYRET I HORDALAND.

EVAR EINKILD SPELAR KAN NYTTE DETTE PARTITURET / EACH PLAYER CAN
SPELETID/DURATION: CA. 4 MIN. READ THIS SCORE.

CON SPIRITO (♩ = ca. 66)

klar. i B^b
kor. i B^b
euph. i B^b

Handwritten musical score for the first system. It consists of three staves: Clarinet in B^b, Cornet in B^b, and Euphonium in B^b. The music is in 4/4 time. The Clarinet part starts with a dynamic of *f* and includes a triplet of eighth notes. The Cornet part has a dynamic of *ppp* and a *mp* section. The Euphonium part has a dynamic of *pp* and a *p* section. There are various slurs and accents throughout.

Handwritten musical score for the second system. It continues the three staves from the first system. The Clarinet part has dynamics of *ppp*, *f*, and *f* with a triplet. The Cornet part has dynamics of *mf*, *f*, and *pp*. The Euphonium part has dynamics of *p*, *mf*, *sempre mf*, and *pp*. There are various slurs and accents throughout.

Handwritten musical score for the third system. It continues the three staves. The Clarinet part has dynamics of *ppp*, *f*, and *pp*. The Cornet part has a dynamic of *f*. The Euphonium part has a dynamic of *f*. The instruction "con sordina" is written above the Cornet staff. The system ends with a dynamic of *f* and a fermata.

clar. *pp*

kom. *(last page:)* *f* *pp* *ppp*

euph. *pp* *mp* *pp*

mf *mf* *mf*

mf sempre

pp *p* *mf* *pp*

pp *pp*

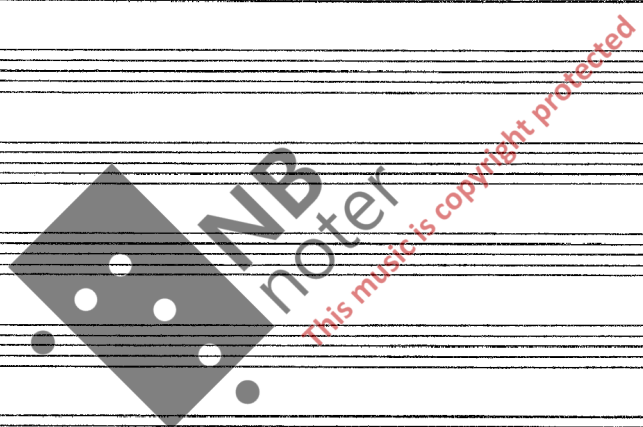
senza sordina

agitato *mf* *mf*

pp *sempre pp* *pp*

Handwritten musical score for the first system, consisting of three staves. The top staff begins with a treble clef and a key signature of one sharp (F#). It contains a series of notes with a *pp* dynamic marking, followed by a *mf* marking and a series of notes with a *f* marking. The middle staff starts with a *mf* marking and includes a triplet of notes. The bottom staff begins with a *ppp* marking and features a *f* marking and the word *sempre*. The system concludes with a double bar line.

Handwritten musical score for the second system, also consisting of three staves. The top staff starts with a *f* marking and includes a *ppp* marking and the word *sempre*. The middle staff begins with a *p* marking and includes the word *sempre*. The bottom staff ends with a *p* marking. The system concludes with a double bar line.



klav.

kon.

enph. (last page:)

con sordina

Handwritten musical score, first system. It consists of three staves. The top staff has a treble clef and contains a melodic line with dynamics *f*, *f*, and *ppp*. The middle staff has a treble clef and contains a melodic line with dynamics *pp* and *mf*. The bottom staff has a bass clef and contains a bass line with dynamics *mf*, *sempre mf*, and *pp*. There are various musical notations including slurs, accents, and triplets.

Handwritten musical score, second system. It consists of three staves. The top staff has a treble clef and contains a melodic line with dynamics *f* and *sempre f*. The middle staff has a treble clef and contains a melodic line with dynamics *f* and *pp*. The bottom staff has a bass clef and contains a bass line with dynamics *f* and *pp*. There are various musical notations including slurs, accents, and triplets.

Handwritten musical score, third system. It consists of three staves. The top staff has a treble clef and contains a melodic line with dynamics *ppp* and *mf*. The middle staff has a treble clef and contains a melodic line with dynamics *pp* and *mf*. The bottom staff has a bass clef and contains a bass line with dynamics *mp*, *pp*, and *pp*. There are various musical notations including slurs, accents, and triplets.

Handwritten musical score, fourth system. It consists of three staves. The top staff has a treble clef and contains a melodic line with dynamics *f* and *pp*. The middle staff has a treble clef and contains a melodic line with dynamics *mf* and *pp*. The bottom staff has a bass clef and contains a bass line with dynamics *p* and *mf*. The system concludes with a circled section labeled "next page:" containing a few notes and a dynamic marking *pp*. The instruction "Senza sordina" is written above the middle staff.

blan. *pp*

corn. *pp* *mf* *Sempre mf*

soph. *mp* *pp*

pp *mf* *f*

mf *f*

mf *f*

pp *f*

Sempre f

Sempre f

loco *p* *pp*

p *pp*

pp

mai
1976

INTERMEZZO FOR TRE BLÅSEINSTRUMENT.

VARIANT FOR FLØYTE, KLARINETT OG BARITONHORN (TENOR)

INTERMEZZO FOR THREE WIND INSTRUMENTS.

ALTERNATIVE FOR FLUTE, CLARINET AND BARYTONHORN

CON SPIRITO (♩ = ca. 66)

fløyte i C

klar. i B^b

bar. i B^b

fl. *pp* *ppp*

clar. *last page:* *p* *pp*

bar. *pp* *mp* *pp* *p*

mf *sempre mf*

mf *p* *mf*

pp *p* *mf*

pp *pp* *mf*

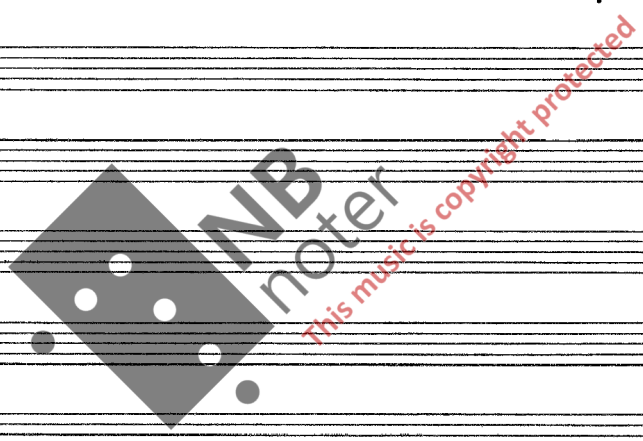
pp *sempre pp* *pp*

agitato *mf* *mf* *sempre mf*

8

Handwritten musical score for the first system, consisting of three staves. The top staff begins with a treble clef, a key signature of one flat (B-flat), and a dynamic marking of *mf*. It features a melodic line with a triplet of eighth notes, a fermata, and a dynamic shift to *f*. The middle staff starts with a piano (*pp*) dynamic and contains a series of chords. The bottom staff begins with a bass clef and a dynamic marking of *ppp*, followed by a melodic line with a dynamic shift to *f* and the instruction *sempre f*.

Handwritten musical score for the second system, also consisting of three staves. The top staff continues the melodic line with a dynamic marking of *p* and the instruction *sempre p*. The middle staff features a series of chords with a dynamic marking of *ppp* and the instruction *sempre f*. The bottom staff contains a melodic line with a dynamic marking of *p* and the instruction *sempre p*.



fl. *pp* *mf*

klar. *pp* *ppp*

var. *pp*

last page

The first system of the handwritten musical score consists of three staves. The top staff is for flute (fl.), the middle for clarinet (klar.), and the bottom for var. (likely violin). The flute part begins with a *pp* dynamic, followed by a *mf* dynamic. The clarinet part starts with a *pp* dynamic and ends with a *ppp* dynamic. The var. part starts with a *pp* dynamic. There are various phrasing slurs and accents throughout the system.

pp *f* *pp* *f* *pp*

mf

mf *f* *pp*

The second system of the handwritten musical score consists of three staves. The top staff has dynamic markings of *pp*, *f*, *pp*, *f*, and *pp*. The middle staff has a *mf* dynamic. The bottom staff has dynamic markings of *mf*, *f*, and *pp*. There are various phrasing slurs and accents throughout the system.

f

f *p* *f* *p*

f *ppp*

The third system of the handwritten musical score consists of three staves. The top staff has a *f* dynamic. The middle staff has dynamic markings of *f*, *p*, *f*, and *p*. The bottom staff has dynamic markings of *f* and *ppp*. There are various phrasing slurs and accents throughout the system.

pp *ppp* *mp* *mf*

p *pp* *p* *p*

8 10

The fourth system of the handwritten musical score consists of three staves. The top staff has dynamic markings of *pp*, *ppp*, *mp*, and *mf*. The middle staff has dynamic markings of *p*, *pp*, *p*, and *p*. The bottom staff has dynamic markings of *p*, *pp*, *p*, and *p*. There are various phrasing slurs and accents throughout the system.

Handwritten musical score for the first system, consisting of three staves. The top staff begins with a treble clef, a key signature of one flat (B-flat), and a 3/4 time signature. It contains a series of notes with slurs and dynamic markings: *f*, *f*, *p*, and *ppp*. The middle staff also starts with a treble clef and contains notes with slurs and dynamic markings: *pp* and *mf*. The bottom staff starts with a bass clef and contains notes with slurs and dynamic markings: *mf*, *sempre mf*, and *pp*. There are also some handwritten annotations like 'b' and '3' above notes.

Handwritten musical score for the second system, consisting of three staves. The top staff begins with a treble clef, a key signature of one flat, and a 3/4 time signature. It contains notes with slurs and dynamic markings: *f*, *sempre f*, and *pp*. The middle staff starts with a treble clef and contains notes with slurs and dynamic markings: *f* and *p*. The bottom staff starts with a bass clef and contains notes with slurs and dynamic markings: *f* and *pp*. There are also some handwritten annotations like '3' above notes.

Handwritten musical score for the third system, consisting of three staves. The top staff begins with a treble clef, a key signature of one flat, and a 3/4 time signature. It contains notes with slurs and dynamic markings: *ppp* and *mf*. The middle staff starts with a treble clef and contains notes with slurs and dynamic markings: *pp* and *mf*. The bottom staff starts with a bass clef and contains notes with slurs and dynamic markings: *mp*, *pp*, *p*, and *pp*. There are also some handwritten annotations like '3' above notes.

Handwritten musical score for the fourth system, consisting of three staves. The top staff begins with a treble clef, a key signature of one flat, and a 3/4 time signature. It contains notes with slurs and dynamic markings: *f* and *pp*. The middle staff starts with a treble clef and contains notes with slurs and dynamic markings: *p* and *mf*. The bottom staff starts with a bass clef and contains notes with slurs and dynamic markings: *p* and *mf*. There are also some handwritten annotations like '3' above notes.

next page:
pp

fl.

clar.

bas.

Handwritten musical score for the first system. It consists of three staves: flute (fl.), clarinet (clar.), and bassoon (bas.). The flute part starts with a *pp* dynamic and includes a slur over the first two measures. The clarinet part begins in the second measure with a *pp* dynamic, transitioning to *mf* in the third measure, and remains *mf* through the fourth measure, marked *sempre mf*. The bassoon part starts with a *mp* dynamic in the first measure and has a *pp* dynamic in the fourth measure.

Handwritten musical score for the second system. The flute part continues with a *pp* dynamic in the first measure, transitioning to *mf* in the second measure. The clarinet part has a *mf* dynamic in the second measure, followed by a *mf* dynamic in the third measure. The bassoon part starts with a *f* dynamic in the first measure, transitions to *pp* in the second measure, and then to *mf* in the third measure.

Handwritten musical score for the third system. The flute part has a *pp* dynamic in the first measure. The clarinet part starts with a *sempre f* dynamic in the first measure and includes triplets in the second and third measures. The bassoon part has a *pp* dynamic in the first measure and a *f* dynamic in the fourth measure.

Handwritten musical score for the fourth system. The flute part has a *p* dynamic in the first measure and a *pp* dynamic in the second measure. The clarinet part has a *pp* dynamic in the second measure. The bassoon part has a *pp* dynamic in the second measure.

juni
1976